



Accredited by the Swiss Accreditation Service (SAS)  
The Swiss Accreditation Service is one of the signatories to the EA  
Multilateral Agreement for the recognition of calibration certificates

Accreditation No.: **SCS 0108**

Client **UL Korea**

Certificate No: **5G-Veri30-1082\_Feb23**

## CALIBRATION CERTIFICATE

Object **5G Verification Source 30 GHz - SN: 1082**

Calibration procedure(s) **QA CAL-45.v4  
Calibration procedure for sources in air above 6 GHz**

Calibration date: **February 21, 2023**

This calibration certificate documents the traceability to national standards, which realize the physical units of measurements (SI).  
The measurements and the uncertainties with confidence probability are given on the following pages and are part of the certificate.

All calibrations have been conducted in the closed laboratory facility: environment temperature ( $22 \pm 3$ )°C and humidity < 70%.

Calibration Equipment used (M&TE critical for calibration)

Primary Standards	ID #	Cal Date (Certificate No.)	Scheduled Calibration
Reference Probe EUmmWV3	SN: 9374	2023-01-03(No. EUmmWV3-9374_Jan23)	Jan-24
DAE4ip	SN: 1602	2022-06-27 (No. DAE4ip-1602_Jun22)	Jun-23
Secondary Standards	ID #	Check Date (in house)	Scheduled Check

Calibrated by:	Name <b>Leif Klysner</b>	Function Laboratory Technician	Signature 
Approved by:	Name <b>Sven Kühn</b>	Technical Manager	

Issued: March 6, 2023

This calibration certificate shall not be reproduced except in full without written approval of the laboratory.



Accredited by the Swiss Accreditation Service (SAS)  
The Swiss Accreditation Service is one of the signatories to the EA  
Multilateral Agreement for the recognition of calibration certificates

Accreditation No.: **SCS 0108**

## Glossary

CW                      Continuous wave

## Calibration is Performed According to the Following Standards

- Internal procedure QA CAL-45, Calibration procedure for sources in air above 6 GHz.
- IEC/IEEE 63195-1, "Assessment of power density of human exposure to radio frequency fields from wireless devices in close proximity to the head and body (frequency range of 6 GHz to 300 GHz)", May 2022

## Methods Applied and Interpretation of Parameters

- *Coordinate System:* z-axis in the waveguide horn boresight, x-axis is in the direction of the E-field, y-axis normal to the others in the field scanning plane parallel to the horn flare and horn flange.
- *Measurement Conditions:* (1) 10 GHz: The forward power to the horn antenna is measured prior and after the measurement with a power sensor. During the measurements, the horn is directly connected to the cable and the antenna ohmic and mismatch losses are determined by far-field measurements. (2) 30, 45, 60 and 90 GHz: The verification sources are switched on for at least 30 minutes. Absorbers are used around the probe cub and at the ceiling to minimize reflections.
- *Horn Positioning:* The waveguide horn is mounted vertically on the flange of the waveguide source to allow vertical positioning of the EUmmW probe during the scan. The plane is parallel to the phantom surface. Probe distance is verified using mechanical gauges positioned on the flare of the horn.
- *E-field distribution:* E field is measured in two x-y-plane (10mm, 10mm +  $\lambda/4$ ) with a vectorial E-field probe. The E-field value stated as calibration value represents the E-field-maxima and the averaged (1cm<sup>2</sup> and 4cm<sup>2</sup>) power density values at 10mm in front of the horn.
- *Field polarization:* Above the open horn, linear polarization of the field is expected. This is verified graphically in the field representation.

## Calibrated Quantity

- Local peak E-field (V/m) and average of peak spatial components of the poynting vector (W/m<sup>2</sup>) averaged over the surface area of 1 cm<sup>2</sup> and 4cm<sup>2</sup> at the nominal operational frequency of the verification source. Both square and circular averaging results are listed.

The reported uncertainty of measurement is stated as the standard uncertainty of measurement multiplied by the coverage factor k=2, which for a normal distribution corresponds to a coverage probability of approximately 95%.

## Measurement Conditions

DASY system configuration, as far as not given on page 1.

DASY Version	DASY8 Module mmWave	V3.2
Phantom	5G Phantom	
Distance Horn Aperture - plane	10 mm	
Number of measured planes	2 (10mm, 10mm + $\lambda/4$ )	
Frequency	30 GHz $\pm$ 10 MHz	

## Calibration Parameters, 30 GHz

### Circular Averaging

Distance Horn Aperture to Measured Plane	<i>Prad</i> <sup>1</sup> (mW)	Max E-field (V/m)	Uncertainty (k = 2)	Avg Power Density Avg (psPDn+, psPDtot+, psPDmod+) (W/m <sup>2</sup> )		Uncertainty (k = 2)
				1 cm <sup>2</sup>	4 cm <sup>2</sup>	
10 mm	42.9	156	1.27 dB	55.0	48.5	1.28 dB

Distance Horn Aperture to Measured Plane	<i>Prad</i> <sup>1</sup> (mW)	Max E-field (V/m)	Uncertainty (k = 2)	Power Density psPDn+, psPDtot+, psPDmod+ (W/m <sup>2</sup> )		Uncertainty (k = 2)
				1 cm <sup>2</sup>	4 cm <sup>2</sup>	
10 mm	42.9	156	1.27 dB	54.5, 55.1, 55.3	48.0, 48.6, 48.8	1.28 dB

### Square Averaging

Distance Horn Aperture to Measured Plane	<i>Prad</i> <sup>1</sup> (mW)	Max E-field (V/m)	Uncertainty (k = 2)	Avg Power Density Avg (psPDn+, psPDtot+, psPDmod+) (W/m <sup>2</sup> )		Uncertainty (k = 2)
				1 cm <sup>2</sup>	4 cm <sup>2</sup>	
10 mm	42.9	156	1.27 dB	55.0	48.4	1.28 dB

Distance Horn Aperture to Measured Plane	<i>Prad</i> <sup>1</sup> (mW)	Max E-field (V/m)	Uncertainty (k = 2)	Power Density psPDn+, psPDtot+, psPDmod+ (W/m <sup>2</sup> )		Uncertainty (k = 2)
				1 cm <sup>2</sup>	4 cm <sup>2</sup>	
10 mm	42.9	156	1.27 dB	54.6, 55.1, 55.4	47.9, 48.5, 48.7	1.28 dB

### Max Power Density

Distance Horn Aperture to Measured Plane	<i>Prad</i> <sup>1</sup> (mW)	Max E-field (V/m)	Uncertainty (k = 2)	Max Power Density Sn, Stot, [Stot] (W/m <sup>2</sup> )	Uncertainty (k = 2)
10 mm	42.9	156	1.27 dB	63.8, 63.8, 64.0	1.28 dB

<sup>1</sup> Derived from far-field data

# DASY Report

## Measurement Report for 5G Verification Source 30 GHz, UID 0 -, Channel 30000 (30000.0MHz)

### Device under Test Properties

Name, Manufacturer	Dimensions [mm]	IMEI	DUT Type
5G Verification Source 30 GHz	100.0 x 100.0 x 100.0	SN: 1082	-

### Exposure Conditions

Phantom Section	Position, Test Distance [mm]	Band	Group,	Frequency [MHz], Channel Number	Conversion Factor
5G -	5.55 mm	Validation band	CW	30000.0, 30000	1.0

### Hardware Setup

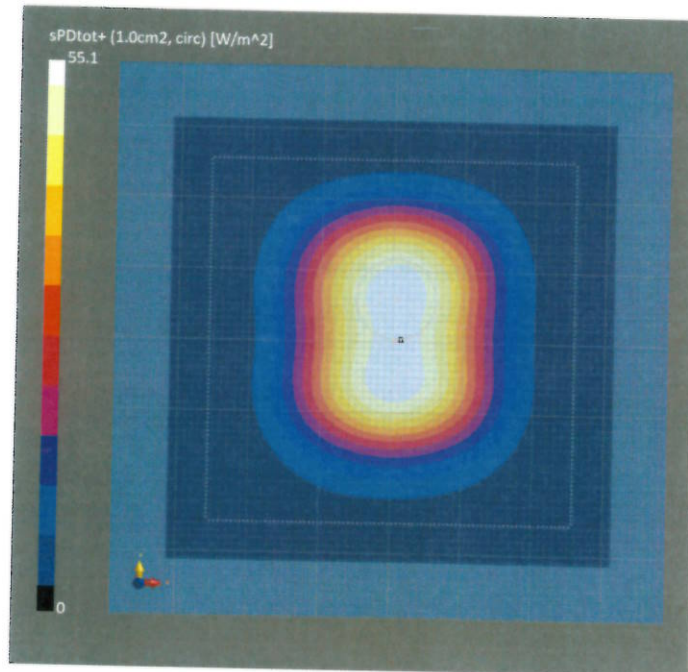
Phantom	Medium	Probe, Calibration Date	DAE, Calibration Date
mmWave Phantom - 1002	Air	EUmmWV3 - SN9374_F1-55GHz, 2023-01-03	DAE4ip Sn1602, 2022-06-27

### Scan Setup

Sensor Surface [mm]	5G Scan
MAIA	5.55 MAIA not used

### Measurement Results

	5G Scan
Date	2023-02-21, 09:10
Avg. Area [cm <sup>2</sup> ]	1.00
Avg. Type	Circular Averaging
psPDn+ [W/m <sup>2</sup> ]	54.5
psPDtot+ [W/m <sup>2</sup> ]	55.1
psPDmod+ [W/m <sup>2</sup> ]	55.3
Max(Sn) [W/m <sup>2</sup> ]	63.8
Max(Stot) [W/m <sup>2</sup> ]	63.8
Max( Stot ) [W/m <sup>2</sup> ]	64.0
E <sub>max</sub> [V/m]	156
Power Drift [dB]	-0.06



# DASY Report

## Measurement Report for 5G Verification Source 30 GHz, UID 0 -, Channel 30000 (30000.0MHz)

### Device under Test Properties

Name, Manufacturer	Dimensions [mm]	IMEI	DUT Type
5G Verification Source 30 GHz	100.0 x 100.0 x 100.0	SN: 1082	-

### Exposure Conditions

Phantom Section	Position, Test Distance [mm]	Band	Group,	Frequency [MHz], Channel Number	Conversion Factor
5G -	5.55 mm	Validation band	CW	30000.0, 30000	1.0

### Hardware Setup

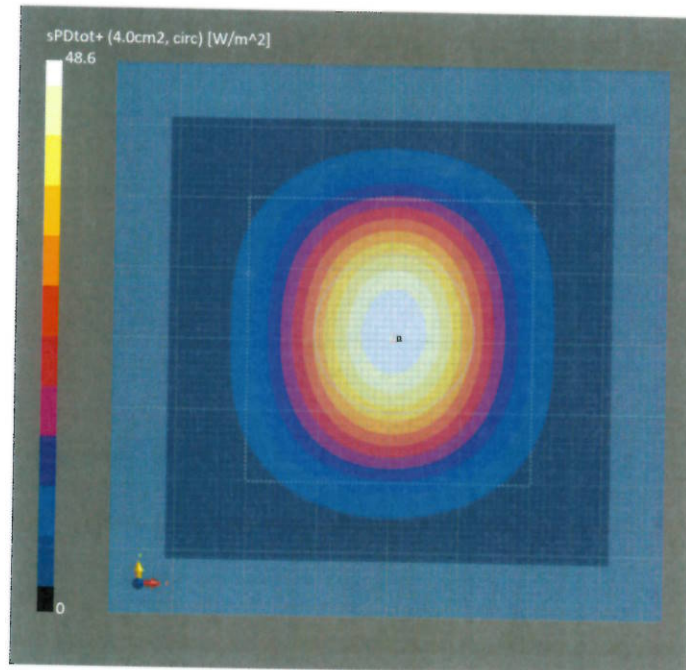
Phantom	Medium	Probe, Calibration Date	DAE, Calibration Date
mmWave Phantom - 1002	Air	EUmmWV3 - SN9374_F1-55GHz, 2023-01-03	DAE4ip Sn1602, 2022-06-27

### Scan Setup

Sensor Surface [mm]	5G Scan
MAIA	5.55 MAIA not used

### Measurement Results

	5G Scan
Date	2023-02-21, 09:10
Avg. Area [cm <sup>2</sup> ]	4.00
Avg. Type	Circular Averaging
psPDn+ [W/m <sup>2</sup> ]	48.0
psPDtot+ [W/m <sup>2</sup> ]	48.6
psPDmod+ [W/m <sup>2</sup> ]	48.8
Max(Sn) [W/m <sup>2</sup> ]	63.8
Max(Stot) [W/m <sup>2</sup> ]	63.8
Max( Stot ) [W/m <sup>2</sup> ]	64.0
E <sub>max</sub> [V/m]	156
Power Drift [dB]	-0.06



# DASY Report

## Measurement Report for 5G Verification Source 30 GHz, UID 0 -, Channel 30000 (30000.0MHz)

### Device under Test Properties

Name, Manufacturer	Dimensions [mm]	IMEI	DUT Type
5G Verification Source 30 GHz	100.0 x 100.0 x 100.0	SN: 1082	-

### Exposure Conditions

Phantom Section	Position, Test Distance [mm]	Band	Group,	Frequency [MHz], Channel Number	Conversion Factor
5G -	5.55 mm	Validation band	CW	30000.0, 30000	1.0

### Hardware Setup

Phantom	Medium	Probe, Calibration Date	DAE, Calibration Date
mmWave Phantom - 1002	Air	EUmmWV3 - SN9374_F1-55GHz, 2023-01-03	DAE4ip Sn1602, 2022-06-27

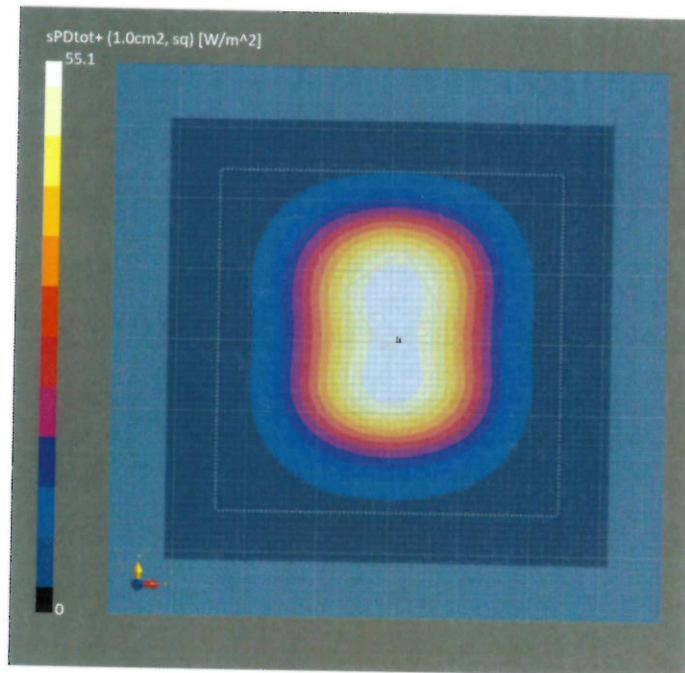
### Scan Setup

Sensor Surface [mm]  
MAIA

5G Scan  
5.55  
MAIA not used

### Measurement Results

	5G Scan
Date	2023-02-21, 09:10
Avg. Area [cm <sup>2</sup> ]	1.00
Avg. Type	Square Averaging
psPDn+ [W/m <sup>2</sup> ]	54.6
psPDtot+ [W/m <sup>2</sup> ]	55.1
psPDmod+ [W/m <sup>2</sup> ]	55.4
Max(Sn) [W/m <sup>2</sup> ]	63.8
Max(Stot) [W/m <sup>2</sup> ]	63.8
Max( Stot ) [W/m <sup>2</sup> ]	64.0
E <sub>max</sub> [V/m]	156
Power Drift [dB]	-0.06



# DASY Report

## Measurement Report for 5G Verification Source 30 GHz, UID 0 -, Channel 30000 (30000.0MHz)

### Device under Test Properties

Name, Manufacturer	Dimensions [mm]	IMEI	DUT Type
5G Verification Source 30 GHz	100.0 x 100.0 x 100.0	SN: 1082	-

### Exposure Conditions

Phantom Section	Position, Test Distance [mm]	Band	Group,	Frequency [MHz], Channel Number	Conversion Factor
5G -	5.55 mm	Validation band	CW	30000.0, 30000	1.0

### Hardware Setup

Phantom	Medium	Probe, Calibration Date	DAE, Calibration Date
mmWave Phantom - 1002	Air	EUmmWV3 - SN9374_F1-55GHz, 2023-01-03	DAE4ip Sn1602, 2022-06-27

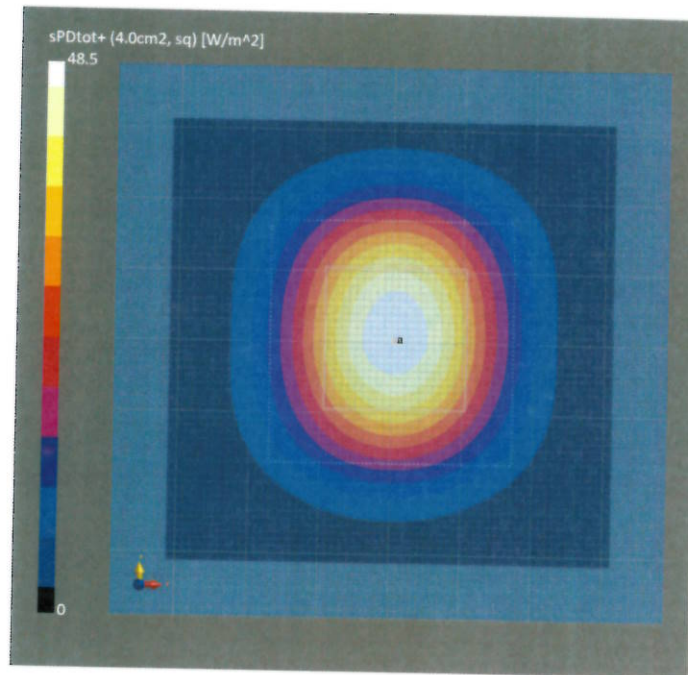
### Scan Setup

Sensor Surface [mm]  
MAIA

5G Scan  
5.55  
MAIA not used

### Measurement Results

	5G Scan
Date	2023-02-21, 09:10
Avg. Area [cm <sup>2</sup> ]	4.00
Avg. Type	Square Averaging
psPDn+ [W/m <sup>2</sup> ]	47.9
psPDtot+ [W/m <sup>2</sup> ]	48.5
psPDmod+ [W/m <sup>2</sup> ]	48.7
Max(Sn) [W/m <sup>2</sup> ]	63.8
Max(Stot) [W/m <sup>2</sup> ]	63.8
Max( Stot ) [W/m <sup>2</sup> ]	64.0
E <sub>max</sub> [V/m]	156
Power Drift [dB]	-0.06



## Appendix: Source Evaluation for Relative System Check

### Measurement Equipment

DASY system configuration, as far as not given on page 1.

Item	ID#	Certificate No.
Probe EUmmWV4	SN: 9536	EUmm-9536_Feb23

### Measurement Conditions

DASY system configuration, as far as not given on page 1.

DASY Version	DASY8 Module mmWave	V3.2
Phantom	5G Phantom	
Distance Horn Aperture - plane	10 mm	
Number of measured planes	2 (10mm, 10mm + $\lambda/4$ )	
Frequency	30 GHz $\pm$ 100 MHz	



## Calibration Parameters, 30 GHz

### Circular Averaging

Distance Horn Aperture to Measured Plane	<i>Prad</i> <sup>1</sup> (mW)	Max E-field (V/m)	Uncertainty (k = 2)	Avg Power Density Avg (psPDn+, psPDtot+, psPDmod+) (W/m <sup>2</sup> )		Uncertainty (k = 2)
				1 cm <sup>2</sup>	4 cm <sup>2</sup>	
10 mm	42.9	159	1.27 dB	54.9	46.6	1.28 dB

Distance Horn Aperture to Measured Plane	<i>Prad</i> <sup>1</sup> (mW)	Max E-field (V/m)	Uncertainty (k = 2)	Power Density psPDn+, psPDtot+, psPDmod+ (W/m <sup>2</sup> )		Uncertainty (k = 2)
				1 cm <sup>2</sup>	4 cm <sup>2</sup>	
10 mm	42.9	159	1.27 dB	54.5, 55.1, 55.2	46.1, 46.8, 47.0	1.28 dB

### Square Averaging

Distance Horn Aperture to Measured Plane	<i>Prad</i> <sup>1</sup> (mW)	Max E-field (V/m)	Uncertainty (k = 2)	Avg Power Density Avg (psPDn+, psPDtot+, psPDmod+) (W/m <sup>2</sup> )		Uncertainty (k = 2)
				1 cm <sup>2</sup>	4 cm <sup>2</sup>	
10 mm	42.9	159	1.27 dB	55.0	46.5	1.28 dB

Distance Horn Aperture to Measured Plane	<i>Prad</i> <sup>1</sup> (mW)	Max E-field (V/m)	Uncertainty (k = 2)	Power Density psPDn+, psPDtot+, psPDmod+ (W/m <sup>2</sup> )		Uncertainty (k = 2)
				1 cm <sup>2</sup>	4 cm <sup>2</sup>	
10 mm	42.9	159	1.27 dB	54.6, 55.1, 55.3	46.0, 46.7, 46.9	1.28 dB

### Max Power Density

Distance Horn Aperture to Measured Plane	<i>Prad</i> <sup>1</sup> (mW)	Max E-field (V/m)	Uncertainty (k = 2)	Max Power Density Sn, Stot,  Stot  (W/m <sup>2</sup> )	Uncertainty (k = 2)
10 mm	42.9	159	1.27 dB	62.6, 62.7, 62.7	1.28 dB

<sup>1</sup> Derived from far-field data

# Appendix: DASYS Report

## Measurement Report for 5G Verification Source 30 GHz, UID 0 -, Channel 30000 (30000.0MHz)

### Device under Test Properties

Name, Manufacturer	Dimensions [mm]	IMEI	DUT Type
5G Verification Source 30 GHz	100.0 x 100.0 x 100.0	SN: 1082	-

### Exposure Conditions

Phantom Section	Position, Test Distance [mm]	Band	Group,	Frequency [MHz], Channel Number	Conversion Factor
5G -	5.55 mm	Validation band	CW	30000.0, 30000	1.0

### Hardware Setup

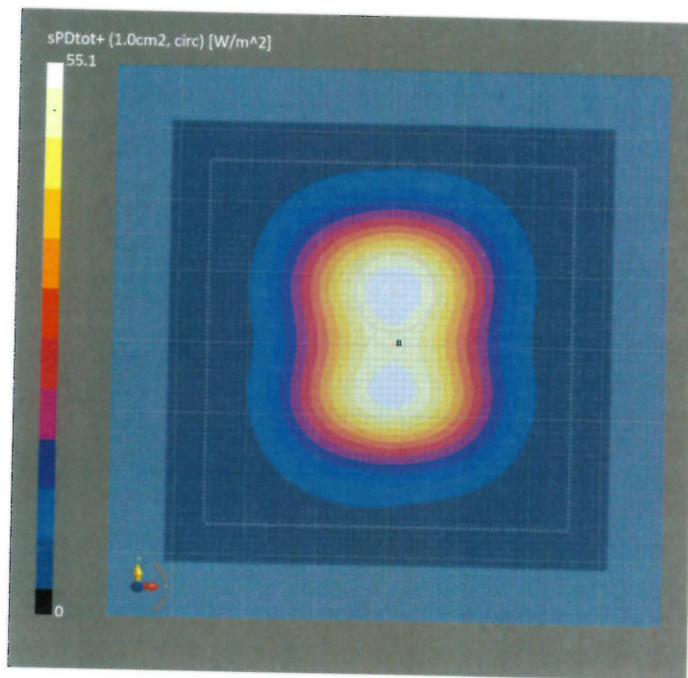
Phantom	Medium	Probe, Calibration Date	DAE, Calibration Date
mmWave Phantom - 1002	Air	EUmWV4 - SN9536_F1-55GHz, 2023-02-23	DAE4 Sn1215, 2022-06-27

### Scan Setup

Sensor Surface [mm]	5G Scan
MAIA	5.55 MAIA not used

### Measurement Results

	5G Scan
Date	2023-02-21, 11:04
Avg. Area [cm <sup>2</sup> ]	1.00
Avg. Type	Circular Averaging
psPDn+ [W/m <sup>2</sup> ]	54.5
psPDtot+ [W/m <sup>2</sup> ]	55.1
psPDmod+ [W/m <sup>2</sup> ]	55.2
Max(Sn) [W/m <sup>2</sup> ]	62.6
Max(Stot) [W/m <sup>2</sup> ]	62.7
Max( Stot ) [W/m <sup>2</sup> ]	62.7
E <sub>max</sub> [V/m]	159
Power Drift [dB]	0.04



# Appendix: DASy Report

## Measurement Report for 5G Verification Source 30 GHz, UID 0 -, Channel 30000 (30000.0MHz)

### Device under Test Properties

Name, Manufacturer	Dimensions [mm]	IMEI	DUT Type
5G Verification Source 30 GHz	100.0 x 100.0 x 100.0	SN: 1082	-

### Exposure Conditions

Phantom Section	Position, Test Distance [mm]	Band	Group,	Frequency [MHz], Channel Number	Conversion Factor
5G -	5.55 mm	Validation band	CW	30000.0, 30000	1.0

### Hardware Setup

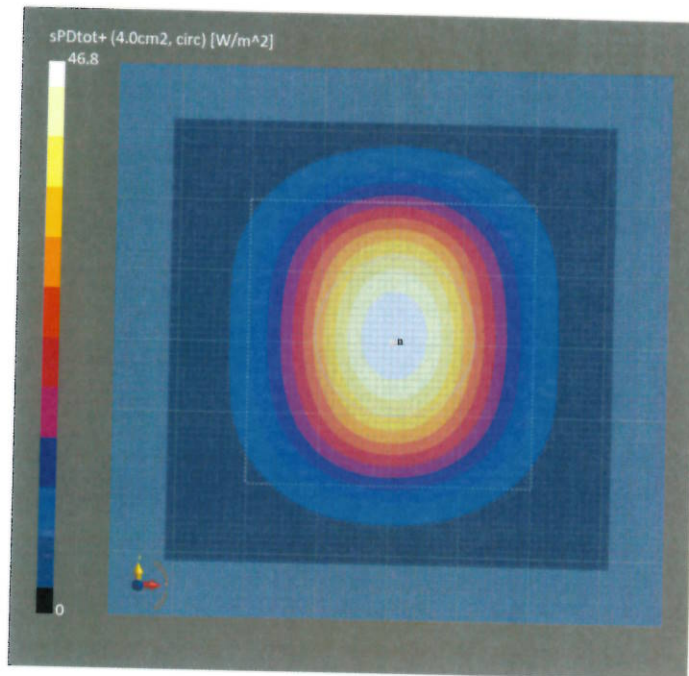
Phantom	Medium	Probe, Calibration Date	DAE, Calibration Date
mmWave Phantom - 1002	Air	EUmmWV4 - SN9536_F1-55GHz, 2023-02-23	DAE4 Sn1215, 2022-06-27

### Scan Setup

Sensor Surface [mm]	5G Scan
MAIA	5.55 MAIA not used

### Measurement Results

	5G Scan
Date	2023-02-21, 11:04
Avg. Area [cm <sup>2</sup> ]	4.00
Avg. Type	Circular Averaging
psPDn+ [W/m <sup>2</sup> ]	46.1
psPDtot+ [W/m <sup>2</sup> ]	46.8
psPDmod+ [W/m <sup>2</sup> ]	47.0
Max(Sn) [W/m <sup>2</sup> ]	62.6
Max(Stot) [W/m <sup>2</sup> ]	62.7
Max( Stot ) [W/m <sup>2</sup> ]	62.7
E <sub>max</sub> [V/m]	159
Power Drift [dB]	0.04



# Appendix: DASy Report

## Measurement Report for 5G Verification Source 30 GHz, UID 0 -, Channel 30000 (30000.0MHz)

### Device under Test Properties

Name, Manufacturer	Dimensions [mm]	IMEI	DUT Type
5G Verification Source 30 GHz	100.0 x 100.0 x 100.0	SN: 1082	-

### Exposure Conditions

Phantom Section	Position, Test Distance [mm]	Band	Group,	Frequency [MHz], Channel Number	Conversion Factor
5G -	5.55 mm	Validation band	CW	30000.0, 30000	1.0

### Hardware Setup

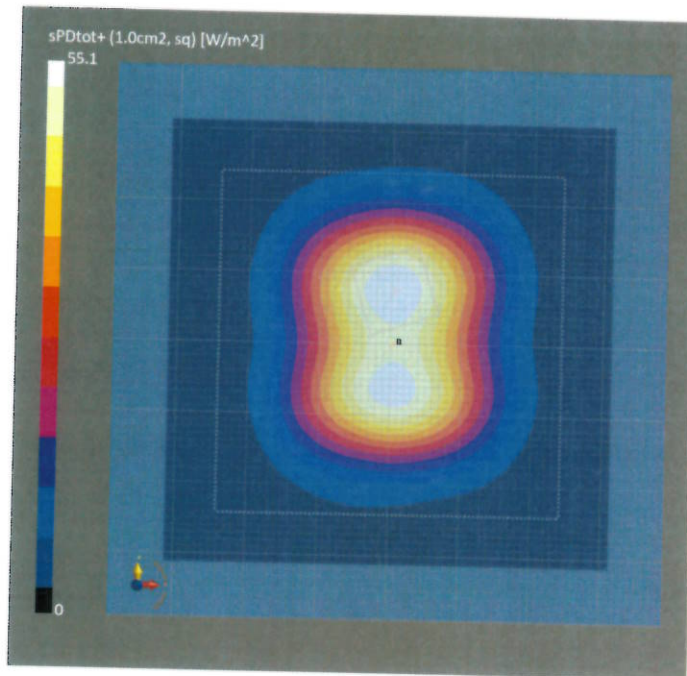
Phantom	Medium	Probe, Calibration Date	DAE, Calibration Date
mmWave Phantom - 1002	Air	EUmmWV4 - SN9536_F1-55GHz, 2023-02-23	DAE4 Sn1215, 2022-06-27

### Scan Setup

Sensor Surface [mm]	5G Scan
MAIA	5.55 MAIA not used

### Measurement Results

	5G Scan
Date	2023-02-21, 11:04
Avg. Area [cm <sup>2</sup> ]	1.00
Avg. Type	Square Averaging
psPDn+ [W/m <sup>2</sup> ]	54.6
psPDtot+ [W/m <sup>2</sup> ]	55.1
psPDmod+ [W/m <sup>2</sup> ]	55.3
Max(Sn) [W/m <sup>2</sup> ]	62.6
Max(Stot) [W/m <sup>2</sup> ]	62.7
Max( Stot ) [W/m <sup>2</sup> ]	62.7
E <sub>max</sub> [V/m]	159
Power Drift [dB]	0.04



# Appendix: DASYS Report

## Measurement Report for 5G Verification Source 30 GHz, UID 0 -, Channel 30000 (30000.0MHz)

### Device under Test Properties

Name, Manufacturer	Dimensions [mm]	IMEI	DUT Type
5G Verification Source 30 GHz	100.0 x 100.0 x 100.0	SN: 1082	-

### Exposure Conditions

Phantom Section	Position, Test Distance [mm]	Band	Group,	Frequency [MHz], Channel Number	Conversion Factor
5G -	5.55 mm	Validation band	CW	30000.0, 30000	1.0

### Hardware Setup

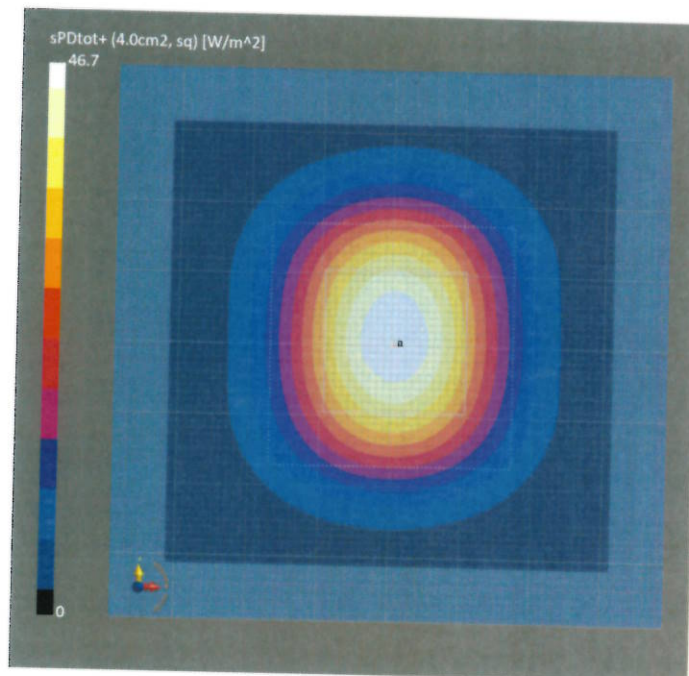
Phantom	Medium	Probe, Calibration Date	DAE, Calibration Date
mmWave Phantom - 1002	Air	EUmmWV4 - SN9536_F1-55GHz, 2023-02-23	DAE4 Sn1215, 2022-06-27

### Scan Setup

Sensor Surface [mm]	5G Scan
MAIA	5.55 MAIA not used

### Measurement Results

	5G Scan
Date	2023-02-21, 11:04
Avg. Area [cm <sup>2</sup> ]	4.00
Avg. Type	Square Averaging
psPDn+ [W/m <sup>2</sup> ]	46.0
psPDtot+ [W/m <sup>2</sup> ]	46.7
psPDmod+ [W/m <sup>2</sup> ]	46.9
Max(Sn) [W/m <sup>2</sup> ]	62.6
Max(Stot) [W/m <sup>2</sup> ]	62.7
Max( Stot ) [W/m <sup>2</sup> ]	62.7
E <sub>max</sub> [V/m]	159
Power Drift [dB]	0.04



## Appendix: Source Evaluation for Relative System Check

### Measurement Equipment

DASY system configuration, as far as not given on page 1.

Item	ID#	Certificate No.
Probe EUmmWV4	SN: 9559	EUmm-9559_Feb23

### Measurement Conditions

DASY system configuration, as far as not given on page 1.

DASY Version	DASY8 Module mmWave	V3.2
Phantom	5G Phantom	
Distance Horn Aperture - plane	10 mm	
Number of measured planes	2 (10mm, 10mm + $\lambda/4$ )	
Frequency	30 GHz $\pm$ 100 MHz	

## Calibration Parameters, 30 GHz

### Circular Averaging

Distance Horn Aperture to Measured Plane	<i>Prad</i> <sup>†</sup> (mW)	Max E-field (V/m)	Uncertainty (k = 2)	Avg Power Density Avg (psPDn+, psPDtot+, psPDmod+) (W/m <sup>2</sup> )		Uncertainty (k = 2)
				1 cm <sup>2</sup>	4 cm <sup>2</sup>	
10 mm	42.9	156	1.27 dB	54.7	47.4	1.28 dB

Distance Horn Aperture to Measured Plane	<i>Prad</i> <sup>†</sup> (mW)	Max E-field (V/m)	Uncertainty (k = 2)	Power Density psPDn+, psPDtot+, psPDmod+ (W/m <sup>2</sup> )		Uncertainty (k = 2)
				1 cm <sup>2</sup>	4 cm <sup>2</sup>	
10 mm	42.9	156	1.27 dB	54.3, 54.8, 54.9	47.0, 47.5, 47.7	1.28 dB

### Square Averaging

Distance Horn Aperture to Measured Plane	<i>Prad</i> <sup>†</sup> (mW)	Max E-field (V/m)	Uncertainty (k = 2)	Avg Power Density Avg (psPDn+, psPDtot+, psPDmod+) (W/m <sup>2</sup> )		Uncertainty (k = 2)
				1 cm <sup>2</sup>	4 cm <sup>2</sup>	
10 mm	42.9	156	1.27 dB	54.8	47.2	1.28 dB

Distance Horn Aperture to Measured Plane	<i>Prad</i> <sup>†</sup> (mW)	Max E-field (V/m)	Uncertainty (k = 2)	Power Density psPDn+, psPDtot+, psPDmod+ (W/m <sup>2</sup> )		Uncertainty (k = 2)
				1 cm <sup>2</sup>	4 cm <sup>2</sup>	
10 mm	42.9	156	1.27 dB	54.4, 54.9, 55.0	46.8, 47.4, 47.5	1.28 dB

### Max Power Density

Distance Horn Aperture to Measured Plane	<i>Prad</i> <sup>†</sup> (mW)	Max E-field (V/m)	Uncertainty (k = 2)	Max Power Density Sn, Stot,  Stot  (W/m <sup>2</sup> )	Uncertainty (k = 2)
10 mm	42.9	156	1.27 dB	61.7, 61.8, 62.0	1.28 dB

<sup>†</sup> Derived from far-field data

# Appendix: DASYS Report

## Measurement Report for 5G Verification Source 30 GHz, UID 0 -, Channel 30000 (30000.0MHz)

### Device under Test Properties

Name, Manufacturer	Dimensions [mm]	IMEI	DUT Type
5G Verification Source 30 GHz	100.0 x 100.0 x 100.0	SN: 1082	-

### Exposure Conditions

Phantom Section	Position, Test Distance [mm]	Band	Group,	Frequency [MHz], Channel Number	Conversion Factor
5G -	5.55 mm	Validation band	CW	30000.0, 30000	1.0

### Hardware Setup

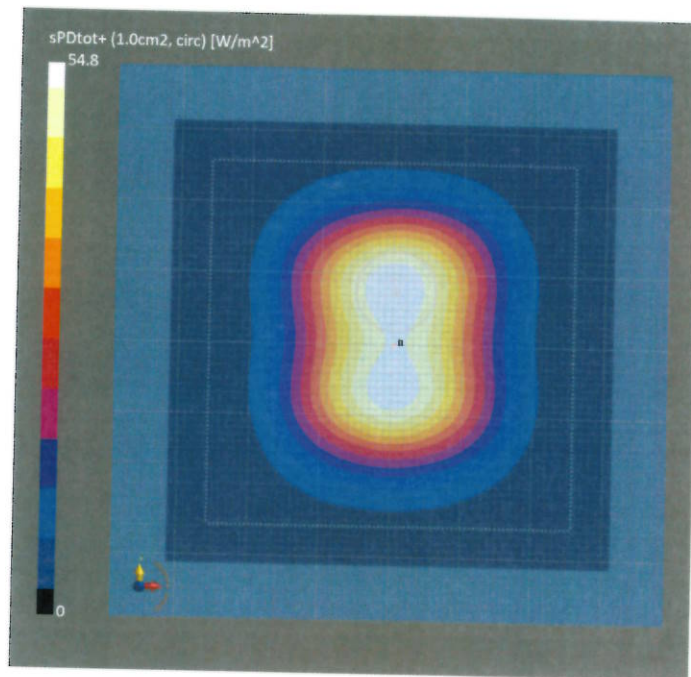
Phantom	Medium	Probe, Calibration Date	DAE, Calibration Date
mmWave Phantom - 1002	Air	EUmmWV4 - SN9559_F1-55GHz, 2023-02-23	DAE4 Sn1215, 2022-06-27

### Scan Setup

Sensor Surface [mm]	5G Scan
MAIA	5.55 MAIA not used

### Measurement Results

	5G Scan
Date	2023-02-21, 12:13
Avg. Area [cm <sup>2</sup> ]	1.00
Avg. Type	Circular Averaging
psPDn+ [W/m <sup>2</sup> ]	54.3
psPDtot+ [W/m <sup>2</sup> ]	54.8
psPDmod+ [W/m <sup>2</sup> ]	54.9
Max(Sn) [W/m <sup>2</sup> ]	61.7
Max(Stot) [W/m <sup>2</sup> ]	61.8
Max( Stot ) [W/m <sup>2</sup> ]	62.0
E <sub>max</sub> [V/m]	156
Power Drift [dB]	-0.01





# Appendix: DASy Report

## Measurement Report for 5G Verification Source 30 GHz, UID 0 -, Channel 30000 (30000.0MHz)

### Device under Test Properties

Name, Manufacturer	Dimensions [mm]	IMEI	DUT Type
5G Verification Source 30 GHz	100.0 x 100.0 x 100.0	SN: 1082	-

### Exposure Conditions

Phantom Section	Position, Test Distance [mm]	Band	Group,	Frequency [MHz], Channel Number	Conversion Factor
5G -	5.55 mm	Validation band	CW	30000.0, 30000	1.0

### Hardware Setup

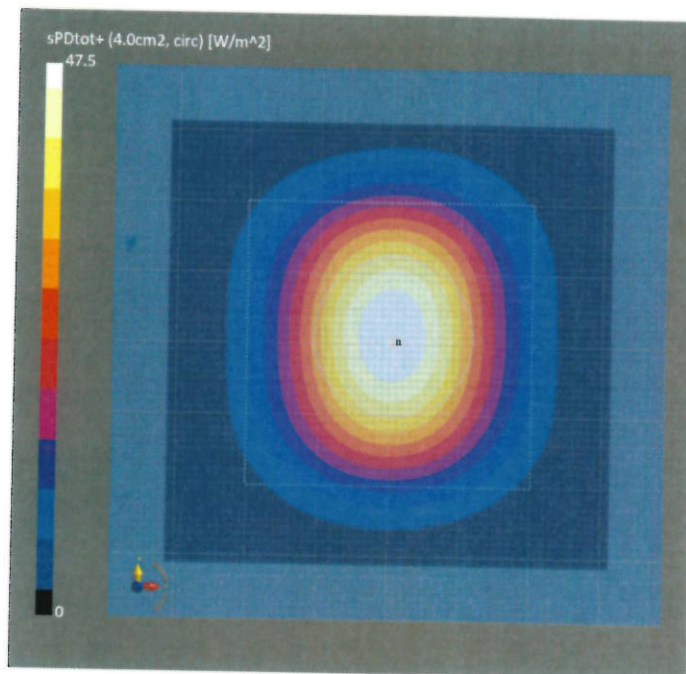
Phantom	Medium	Probe, Calibration Date	DAE, Calibration Date
mmWave Phantom - 1002	Air	EUmmWV4 - SN9559_F1-55GHz, 2023-02-23	DAE4 Sn1215, 2022-06-27

### Scan Setup

Sensor Surface [mm]	5G Scan
MAIA	5.55 MAIA not used

### Measurement Results

	5G Scan
Date	2023-02-21, 12:13
Avg. Area [cm <sup>2</sup> ]	4.00
Avg. Type	Circular Averaging
psPDn+ [W/m <sup>2</sup> ]	47.0
psPDtot+ [W/m <sup>2</sup> ]	47.5
psPDmod+ [W/m <sup>2</sup> ]	47.7
Max(Sn) [W/m <sup>2</sup> ]	61.7
Max(Stot) [W/m <sup>2</sup> ]	61.8
Max( Stot ) [W/m <sup>2</sup> ]	62.0
E <sub>max</sub> [V/m]	156
Power Drift [dB]	-0.01



# Appendix: DASYS Report

## Measurement Report for 5G Verification Source 30 GHz, UID 0 -, Channel 30000 (30000.0MHz)

### Device under Test Properties

Name, Manufacturer	Dimensions [mm]	IMEI	DUT Type
5G Verification Source 30 GHz	100.0 x 100.0 x 100.0	SN: 1082	-

### Exposure Conditions

Phantom Section	Position, Test Distance [mm]	Band	Group,	Frequency [MHz], Channel Number	Conversion Factor
5G -	5.55 mm	Validation band	CW	30000.0, 30000	1.0

### Hardware Setup

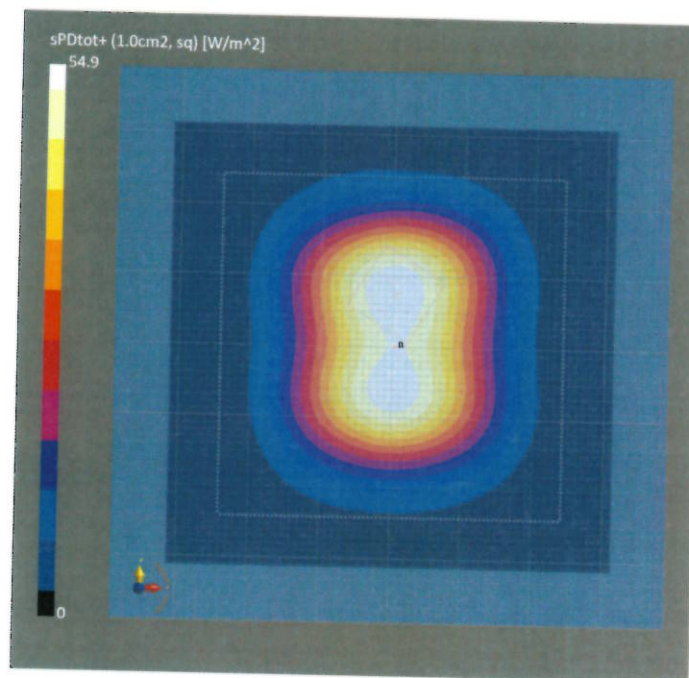
Phantom	Medium	Probe, Calibration Date	DAE, Calibration Date
mmWave Phantom - 1002	Air	EUmmWV4 - SN9559_F1-55GHz, 2023-02-23	DAE4 Sn1215, 2022-06-27

### Scan Setup

Sensor Surface [mm]	5G Scan
MAIA	5.55 MAIA not used

### Measurement Results

	5G Scan
Date	2023-02-21, 12:13
Avg. Area [cm <sup>2</sup> ]	1.00
Avg. Type	Square Averaging
psPDn+ [W/m <sup>2</sup> ]	54.4
psPDtot+ [W/m <sup>2</sup> ]	54.9
psPDmod+ [W/m <sup>2</sup> ]	55.0
Max(Sn) [W/m <sup>2</sup> ]	61.7
Max(Stot) [W/m <sup>2</sup> ]	61.8
Max( Stot ) [W/m <sup>2</sup> ]	62.0
E <sub>max</sub> [V/m]	156
Power Drift [dB]	-0.01



# Appendix: DASy Report

## Measurement Report for 5G Verification Source 30 GHz, UID 0 -, Channel 30000 (30000.0MHz)

### Device under Test Properties

Name, Manufacturer	Dimensions [mm]	IMEI	DUT Type
5G Verification Source 30 GHz	100.0 x 100.0 x 100.0	SN: 1082	-

### Exposure Conditions

Phantom Section	Position, Test Distance [mm]	Band	Group,	Frequency [MHz], Channel Number	Conversion Factor
5G -	5.55 mm	Validation band	CW	30000.0, 30000	1.0

### Hardware Setup

Phantom	Medium	Probe, Calibration Date	DAE, Calibration Date
mmWave Phantom - 1002	Air	EUmmWV4 - SN9559_F1-55GHz, 2023-02-23	DAE4 Sn1215, 2022-06-27

### Scan Setup

Sensor Surface [mm]	5G Scan
MAIA	5.55 MAIA not used

### Measurement Results

	5G Scan
Date	2023-02-21, 12:13
Avg. Area [cm <sup>2</sup> ]	4.00
Avg. Type	Square Averaging
psPDn+ [W/m <sup>2</sup> ]	46.8
psPDtot+ [W/m <sup>2</sup> ]	47.4
psPDmod+ [W/m <sup>2</sup> ]	47.5
Max(Sn) [W/m <sup>2</sup> ]	61.7
Max(Stot) [W/m <sup>2</sup> ]	61.8
Max( Stot ) [W/m <sup>2</sup> ]	62.0
E <sub>max</sub> [V/m]	156
Power Drift [dB]	-0.01

