

Measurement Report for Device, BACK, Custom Band, CW, Channel 25200000 (25200.0 MHz)

Device Under Test Properties

Model, Manufacturer	Dimensions [mm]	IMEI	DUT Type
Device,	147.0 x 70.6 x 8.5		Phone

Exposure Conditions

Phantom Section	Position, Test Distance [mm]	Band	Group, UID	Frequency [MHz], Channel Number	Conversion Factor
5G	BACK, 2.00	Custom Band	CW, 0--	25200.0, 25200000	1.0

Hardware Setup

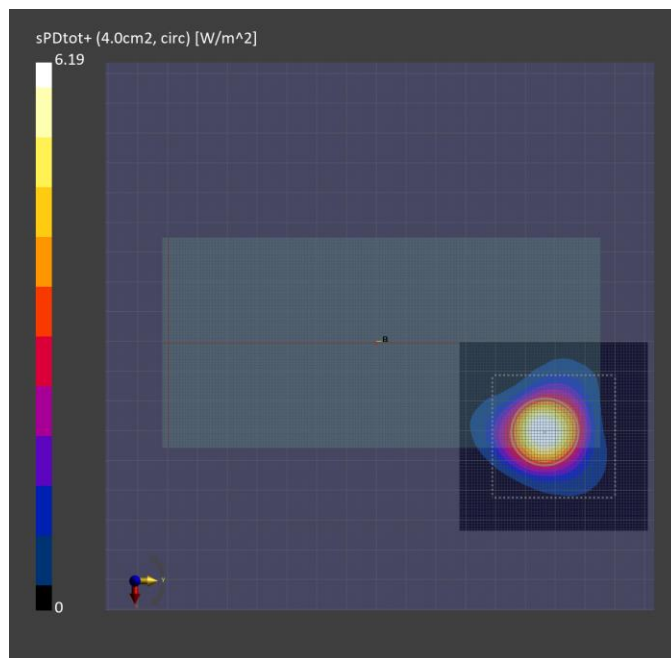
Phantom	Medium	Probe, Calibration Date	DAE, Calibration Date
mmWave - xxxx	Air -	EUmmWV4 - SN9536_F1-55GHz, 2023-02-16	DAE4 Sn1671, 2023-05-25

Scans Setup

Scan Type	5G Scan
Grid Extents [mm]	60.0 x 60.0
Grid Steps [lambda]	0.17158298424721127 x 0.17158298424721127
Sensor Surface [mm]	2.0

Measurement Results

Scan Type	5G Scan
Date	2023-10-10, 11:43
Avg. Area [cm ²]	4.00
psPDn+ [W/m ²]	4.64
psPDtot+ [W/m ²]	6.19
psPDmod+ [W/m ²]	6.55
E _{max} [V/m]	76.3
Power Drift [dB]	-0.01



Measurement Report for Device, BACK, Custom Band, CW, Channel 24350000 (24350.0 MHz)

Device Under Test Properties

Model, Manufacturer	Dimensions [mm]	IMEI	DUT Type
Device,	147.0 x 70.6 x 8.5		Phone

Exposure Conditions

Phantom Section	Position, Test Distance [mm]	Band	Group, UID	Frequency [MHz], Channel Number	Conversion Factor
5G	BACK, 2.00	Custom Band	CW, 0--	24350.0, 24350000	1.0

Hardware Setup

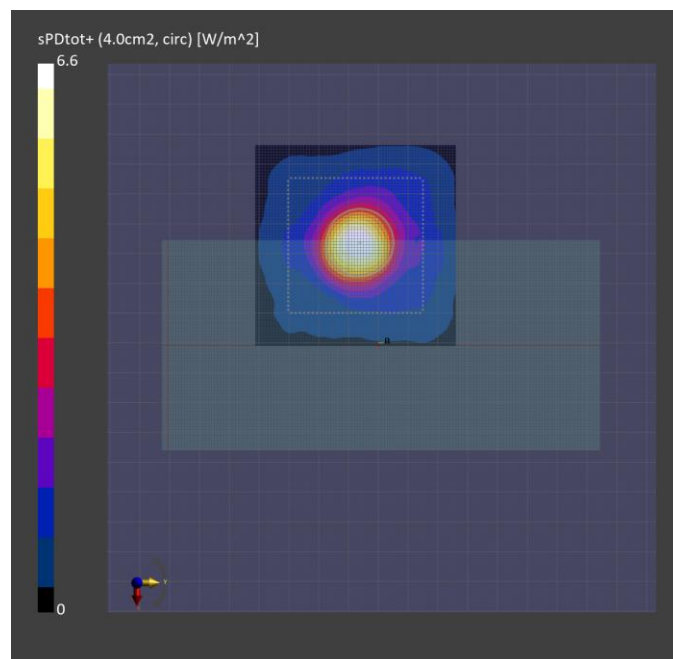
Phantom	Medium	Probe, Calibration Date	DAE, Calibration Date
mmWave - xxxx	Air -	EUmmWV4 - SN9536_F1-55GHz, 2023-02-16	DAE4 Sn1343, 2023-06-30

Scans Setup

Scan Type	5G Scan
Grid Extents [mm]	60.0 x 60.0
Grid Steps [lambda]	0.1657954629531585 x 0.1657954629531585
Sensor Surface [mm]	2.0

Measurement Results

Scan Type	5G Scan
Date	2023-09-18, 14:14
Avg. Area [cm ²]	4.00
psPDn+ [W/m ²]	3.88
psPDtot+ [W/m ²]	6.60
psPDmod+ [W/m ²]	7.66
E _{max} [V/m]	92.3
Power Drift [dB]	0.03



Measurement Report for Device, BACK, Custom Band, CW, Channel 28300000 (28300.0 MHz)

Device Under Test Properties

Model, Manufacturer	Dimensions [mm]	IMEI	DUT Type
Device,	147.0 x 70.6 x 8.5		Phone

Exposure Conditions

Phantom Section	Position, Test Distance [mm]	Band	Group, UID	Frequency [MHz], Channel Number	Conversion Factor
5G	BACK, 2.00	Custom Band	CW, 0--	28300.0, 28300000	1.0

Hardware Setup

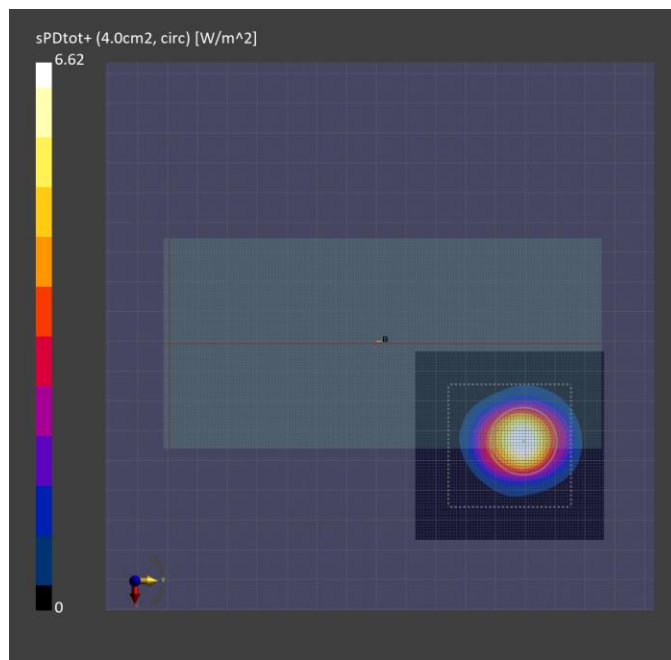
Phantom	Medium	Probe, Calibration Date	DAE, Calibration Date
mmWave - xxxx	Air -	EUmmWV4 - SN9536_F1-55GHz, 2023-02-16	DAE4 Sn1671, 2023-05-25

Scans Setup

Scan Type	5G Scan
Grid Extents [mm]	60.0 x 60.0
Grid Steps [lambda]	0.19269041484905072 x 0.19269041484905072
Sensor Surface [mm]	2.0

Measurement Results

Scan Type	5G Scan
Date	2023-10-19, 16:07
Avg. Area [cm ²]	4.00
psPDn+ [W/m ²]	6.17
psPDtot+ [W/m ²]	6.62
psPDmod+ [W/m ²]	6.91
E _{max} [V/m]	97.6
Power Drift [dB]	0.06



Measurement Report for Device, EDGE RIGHT, Custom Band, CW, Channel 28300000 (28300.0 MHz)

Device Under Test Properties

Model, Manufacturer	Dimensions [mm]	IMEI	DUT Type
Device,	147.0 x 70.6 x 8.5		Phone

Exposure Conditions

Phantom Section	Position, Test Distance [mm]	Band	Group, UID	Frequency [MHz], Channel Number	Conversion Factor
5G	EDGE RIGHT, 2.00	Custom Band	CW, 0--	28300.0, 28300000	1.0

Hardware Setup

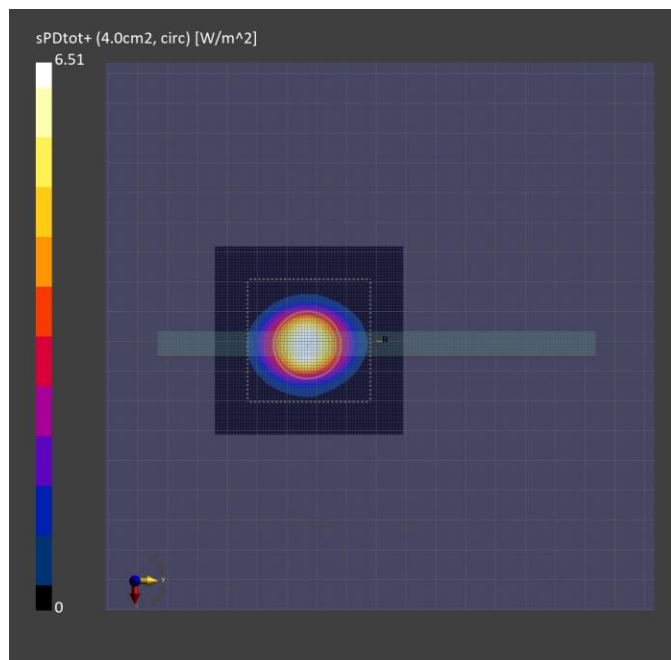
Phantom	Medium	Probe, Calibration Date	DAE, Calibration Date
mmWave - xxxx	Air -	EUmmWV4 - SN9536_F1-55GHz, 2023-02-16	DAE4 Sn1671, 2023-05-25

Scans Setup

Scan Type	5G Scan
Grid Extents [mm]	60.0 x 60.0
Grid Steps [lambda]	0.19269041484905072 x 0.19269041484905072
Sensor Surface [mm]	2.0

Measurement Results

Scan Type	5G Scan
Date	2023-10-06, 13:48
Avg. Area [cm ²]	4.00
psPDn+ [W/m ²]	5.87
psPDtot+ [W/m ²]	6.51
psPDmod+ [W/m ²]	6.83
E _{max} [V/m]	97.8
Power Drift [dB]	-0.00



Measurement Report for Device, BACK, Custom Band, CW, Channel 39949900 (39949.9 MHz)

Device Under Test Properties

Model, Manufacturer	Dimensions [mm]	IMEI	DUT Type
Device,	147.0 x 70.6 x 8.5		Phone

Exposure Conditions

Phantom Section	Position, Test Distance [mm]	Band	Group, UID	Frequency [MHz], Channel Number	Conversion Factor
5G	BACK, 2.00	Custom Band	CW, 0--	39949.9, 39949900	1.0

Hardware Setup

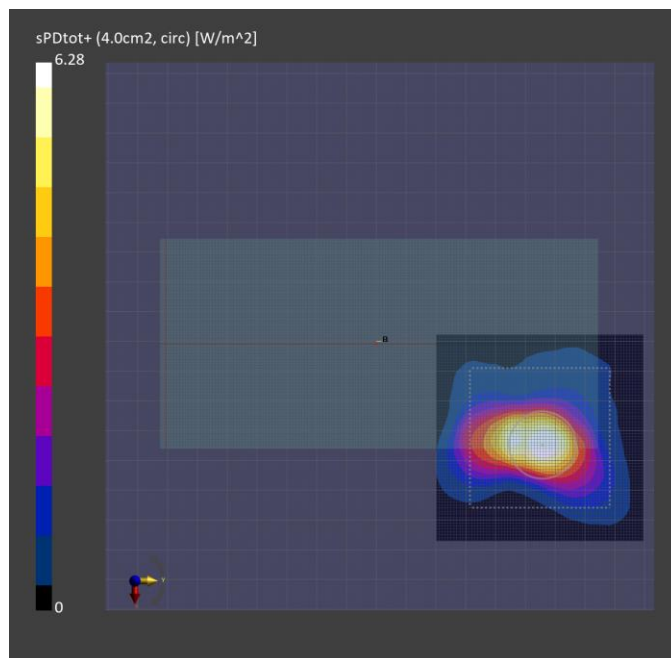
Phantom	Medium	Probe, Calibration Date	DAE, Calibration Date
mmWave - xxxx	Air -	EUmmWV4 - SN9536_F1-55GHz, 2023-02-16	DAE4 Sn1343, 2023-06-30

Scans Setup

Scan Type	5G Scan
Grid Extents [mm]	60.0 x 60.0
Grid Steps [lambda]	0.25 x 0.25
Sensor Surface [mm]	2.0

Measurement Results

Scan Type	5G Scan
Date	2023-09-18, 15:43
Avg. Area [cm ²]	4.00
psPDn+ [W/m ²]	4.37
psPDtot+ [W/m ²]	6.28
psPDmod+ [W/m ²]	6.95
E _{max} [V/m]	96.8
Power Drift [dB]	-0.02



Measurement Report for Device, EDGE RIGHT, Custom Band, CW, Channel 38500000 (38500.0 MHz)

Device Under Test Properties

Model, Manufacturer	Dimensions [mm]	IMEI	DUT Type
Device,	147.0 x 70.6 x 8.5		Phone

Exposure Conditions

Phantom Section	Position, Test Distance [mm]	Band	Group, UID	Frequency [MHz], Channel Number	Conversion Factor
5G	EDGE RIGHT, 2.00	Custom Band	CW, 0--	38500.0, 38500000	1.0

Hardware Setup

Phantom	Medium	Probe, Calibration Date	DAE, Calibration Date
mmWave - xxxx	Air -	EUmmWV4 - SN9536_F1-55GHz, 2023-02-16	DAE4 Sn1671, 2023-05-25

Scans Setup

Scan Type	5G Scan
Grid Extents [mm]	60.0 x 60.0
Grid Steps [lambda]	0.25 x 0.25
Sensor Surface [mm]	2.0

Measurement Results

Scan Type	5G Scan
Date	2023-10-05, 21:27
Avg. Area [cm ²]	4.00
psPDn+ [W/m ²]	5.21
psPDtot+ [W/m ²]	6.56
psPDmod+ [W/m ²]	6.86
E _{max} [V/m]	97.5
Power Drift [dB]	-0.05

