

Measurement Report for Device, FRONT, Validation band, UID 0 -, Channel 30000 (30000.0MHz)

Device under Test Properties

Model, Manufacturer	Dimensions [mm]	IMEI	DUT Type
, Device	100.0 x 100.0 x 100.0		Phone

Exposure Conditions

Phantom Section	Position, Test Distance [mm]	Band	Group, UID	Frequency [MHz], Channel Number	Conversion Factor
5G Air	FRONT, 5.55	Validation band	CW, 0--	30000.0, 30000	1.0

Hardware Setup

Phantom	Medium	Probe, Calibration Date	DAE, Calibration Date
mmWave- xxxx	---Air	EUmmWV4 - SN9536_F1-55GHz, 2023-02-16	DAE4 Sn1671, 2023-05-25

Scan Setup

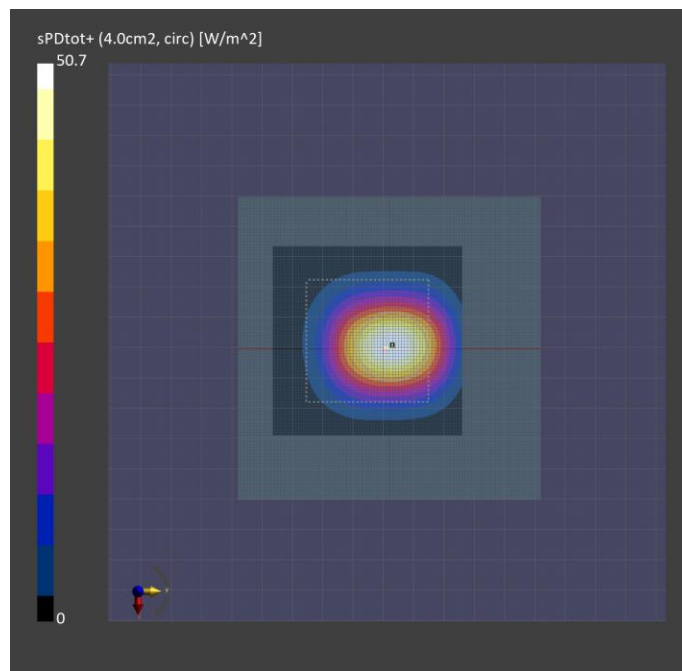
	5G Scan
Grid Extents [mm]	60.0 x 60.0
Grid Steps [lambda]	0.25 x 0.25
Sensor Surface [mm]	5.55
MAIA	N/A

Measurement Results

	5G Scan
Date	2023-10-11, 09:02
Avg. Area [cm ²]	1.00
psPDn+ [W/m ²]	58.1
psPDtot+ [W/m ²]	58.7
psPDmod+ [W/m ²]	58.9
E _{max} [V/m]	164
Power Drift [dB]	-0.01

Warning(s) / Error(s)

Details	5G Scan
Warning(s)	
Error(s)	



Measurement Report for Device, FRONT, Validation band, CW, Channel 30000 (30000.0 MHz)

Device Under Test Properties

Model, Manufacturer	Dimensions [mm]	IMEI	DUT Type
Device,	100.0 x 100.0 x 100.0		Phone

Exposure Conditions

Phantom Section	Position, Test Distance [mm]	Band	Group, UID	Frequency [MHz], Channel Number	Conversion Factor
5G	FRONT, 5.55	Validation band	CW, 0--	30000.0, 30000	1.0

Hardware Setup

Phantom	Medium	Probe, Calibration Date	DAE, Calibration Date
mmWave - xxxx	Air -	EUmmWV4 - SN9536_F1-55GHz, 2023-02-16	DAE4 Sn1671, 2023-05-25

Scans Setup

Scan Type	5G Scan
Grid Extents [mm]	60.0 x 60.0
Grid Steps [lambda]	0.25 x 0.25
Sensor Surface [mm]	5.55

Measurement Results

Scan Type	5G Scan
Date	2023-10-11, 09:02
Avg. Area [cm ²]	1.00
psPDn+ [W/m ²]	58.1
psPDtot+ [W/m ²]	58.7
psPDmod+ [W/m ²]	58.9
E _{max} [V/m]	164
Power Drift [dB]	-0.01

