

# RF Interference Potential Test Report

Measurement performed on October 25, 2023 at 11:06

## Device Under Test

Manufacturer	Model	Dimensions[mm]	Speaker Position [mm]
	S921U	147.17 x 70.6 x 7.61	146.17

## Hardware Setup

Probe Name	Probe Calibration Date	DAE Name	DAE Calibration Date
EF3DV3 - SN4066	July 12, 2023	DAE4 Sn1343	June 30, 2023

## Communication Systems

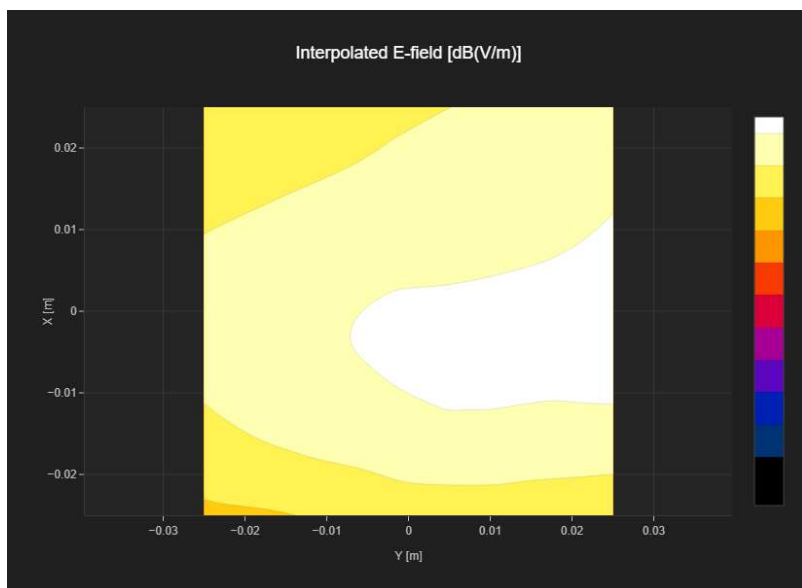
Band Name	Communication Systems Name	Channel	Frequency [MHz]
GSM 850	GSM-FDD (TDMA, GMSK)	128	824.2

## Grid Settings

Extent X [mm]	Extent Y [mm]	Step X [mm]	Step Y [mm]	Distance [mm]
50.0	50.0	10.0	10.0	15.0

## Results

Emax [dB(V/m)]	Eavg50x50 max [dB(V/m)]	MIF [dB]	RFail [dB(V/m)]
21.97	20.48	3.63	24.11



# RF Interference Potential Test Report

Measurement performed on October 25, 2023 at 11:10

## Device Under Test

Manufacturer	Model	Dimensions[mm]	Speaker Position [mm]
	S921U	147.17 x 70.6 x 7.61	146.17

## Hardware Setup

Probe Name	Probe Calibration Date	DAE Name	DAE Calibration Date
EF3DV3 - SN4066	July 12, 2023	DAE4 Sn1343	June 30, 2023

## Communication Systems

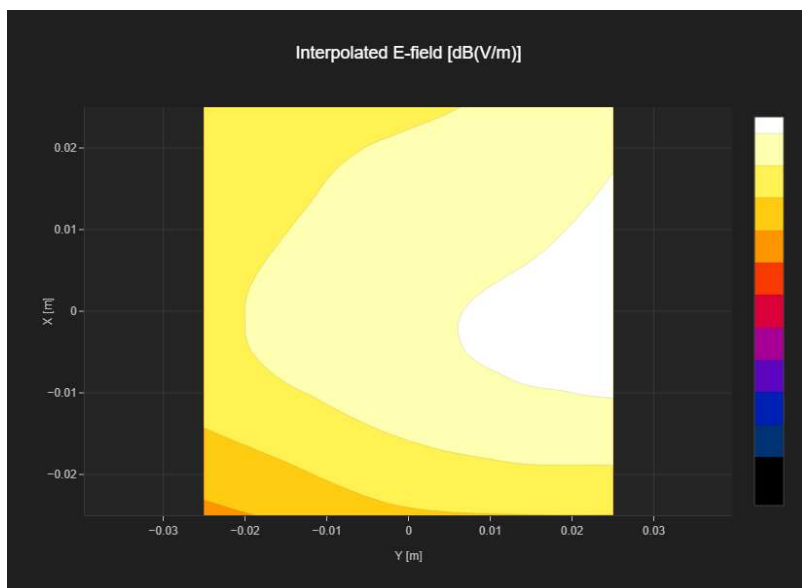
Band Name	Communication Systems Name	Channel	Frequency [MHz]
GSM 850	GSM-FDD (TDMA, GMSK)	190	836.6

## Grid Settings

Extent X [mm]	Extent Y [mm]	Step X [mm]	Step Y [mm]	Distance [mm]
50.0	50.0	10.0	10.0	15.0

## Results

Emax [dB(V/m)]	Eavg50x50 max [dB(V/m)]	MIF [dB]	RFail [dB(V/m)]
23.27	21.25	3.63	24.88



# RF Interference Potential Test Report

Measurement performed on October 25, 2023 at 11:14

## Device Under Test

Manufacturer	Model	Dimensions[mm]	Speaker Position [mm]
	S921U	147.17 x 70.6 x 7.61	146.17

## Hardware Setup

Probe Name	Probe Calibration Date	DAE Name	DAE Calibration Date
EF3DV3 - SN4066	July 12, 2023	DAE4 Sn1343	June 30, 2023

## Communication Systems

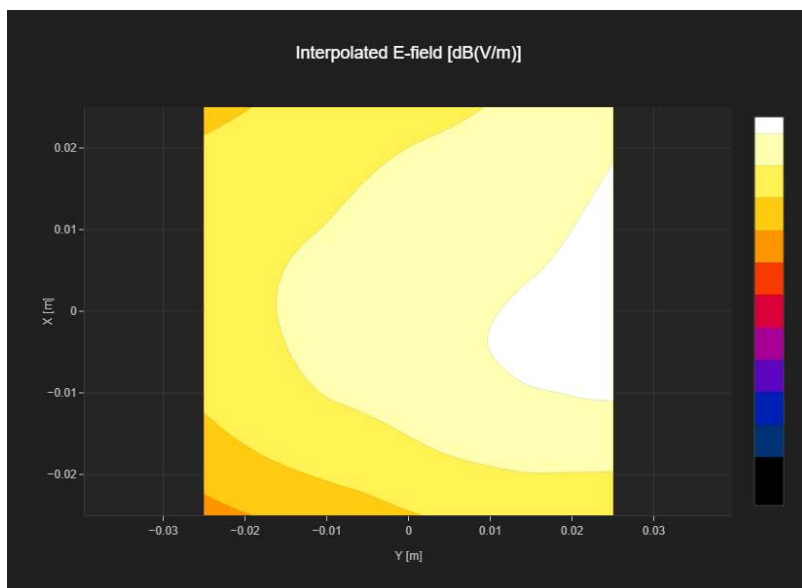
Band Name	Communication Systems Name	Channel	Frequency [MHz]
GSM 850	GSM-FDD (TDMA, GMSK)	251	848.8

## Grid Settings

Extent X [mm]	Extent Y [mm]	Step X [mm]	Step Y [mm]	Distance [mm]
50.0	50.0	10.0	10.0	15.0

## Results

Emax [dB(V/m)]	Eavg50x50 max [dB(V/m)]	MIF [dB]	RFail [dB(V/m)]
22.71	20.57	3.63	24.2



# RF Interference Potential Test Report

Measurement performed on October 25, 2023 at 11:31

## Device Under Test

Manufacturer	Model	Dimensions[mm]	Speaker Position [mm]
	S921U	147.17 x 70.6 x 7.61	146.17

## Hardware Setup

Probe Name	Probe Calibration Date	DAE Name	DAE Calibration Date
EF3DV3 - SN4066	July 12, 2023	DAE4 Sn1343	June 30, 2023

## Communication Systems

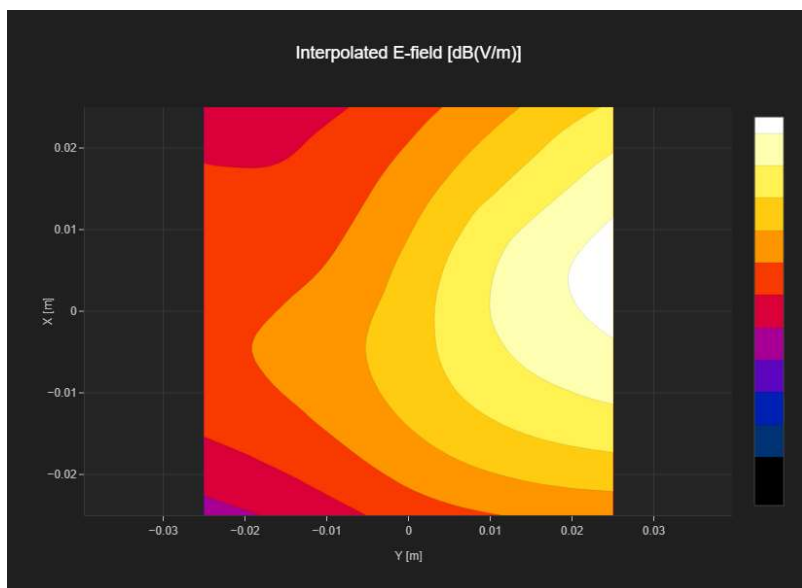
Band Name	Communication Systems Name	Channel	Frequency [MHz]
GSM 850	GSM-FDD (TDMA, GMSK)	128	824.2

## Grid Settings

Extent X [mm]	Extent Y [mm]	Step X [mm]	Step Y [mm]	Distance [mm]
50.0	50.0	10.0	10.0	15.0

## Results

Emax [dB(V/m)]	Eavg50x50 max [dB(V/m)]	MIF [dB]	RFail [dB(V/m)]
37.17	31.58	3.63	35.21



# RF Interference Potential Test Report

Measurement performed on October 25, 2023 at 11:33

## Device Under Test

Manufacturer	Model	Dimensions[mm]	Speaker Position [mm]
	S921U	147.17 x 70.6 x 7.61	146.17

## Hardware Setup

Probe Name	Probe Calibration Date	DAE Name	DAE Calibration Date
EF3DV3 - SN4066	July 12, 2023	DAE4 Sn1343	June 30, 2023

## Communication Systems

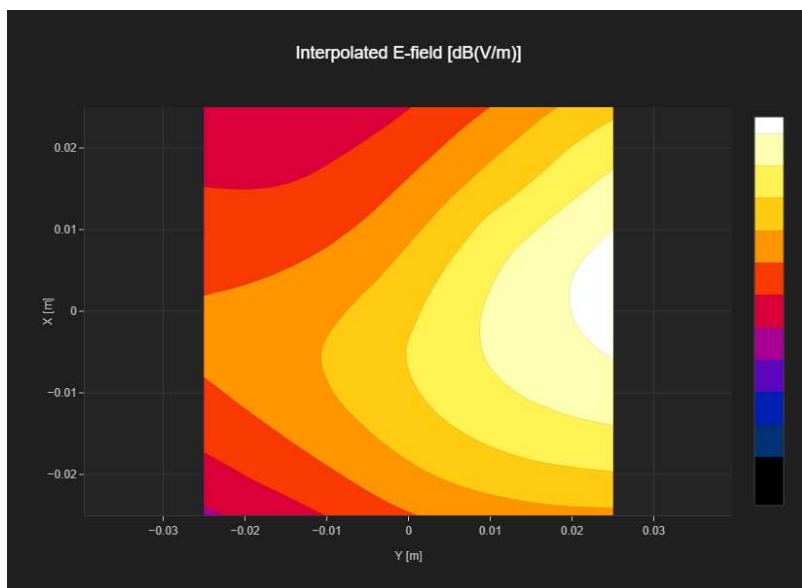
Band Name	Communication Systems Name	Channel	Frequency [MHz]
GSM 850	GSM-FDD (TDMA, GMSK)	190	836.6

## Grid Settings

Extent X [mm]	Extent Y [mm]	Step X [mm]	Step Y [mm]	Distance [mm]
50.0	50.0	10.0	10.0	15.0

## Results

Emax [dB(V/m)]	Eavg50x50 max [dB(V/m)]	MIF [dB]	RFail [dB(V/m)]
37.84	32.46	3.63	36.09



# RF Interference Potential Test Report

Measurement performed on October 25, 2023 at 11:36

## Device Under Test

Manufacturer	Model	Dimensions[mm]	Speaker Position [mm]
	S921U	147.17 x 70.6 x 7.61	146.17

## Hardware Setup

Probe Name	Probe Calibration Date	DAE Name	DAE Calibration Date
EF3DV3 - SN4066	July 12, 2023	DAE4 Sn1343	June 30, 2023

## Communication Systems

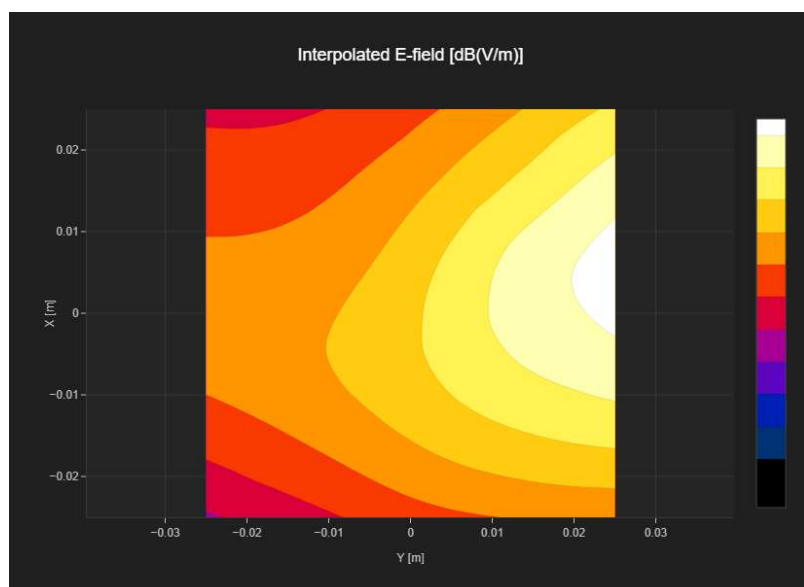
Band Name	Communication Systems Name	Channel	Frequency [MHz]
GSM 850	GSM-FDD (TDMA, GMSK)	251	848.8

## Grid Settings

Extent X [mm]	Extent Y [mm]	Step X [mm]	Step Y [mm]	Distance [mm]
50.0	50.0	10.0	10.0	15.0

## Results

E <sub>max</sub> [dB(V/m)]	E <sub>avg50x50 max</sub> [dB(V/m)]	MIF [dB]	RFail [dB(V/m)]
38.64	33.35	3.63	36.98



# RF Interference Potential Test Report

Measurement performed on October 25, 2023 at 16:55

## Device Under Test

Manufacturer	Model	Dimensions[mm]	Speaker Position [mm]
	S921U	147.17 x 70.6 x 7.61	146.17

## Hardware Setup

Probe Name	Probe Calibration Date	DAE Name	DAE Calibration Date
EF3DV3 - SN4066	July 12, 2023	DAE4 Sn1343	June 30, 2023

## Communication Systems

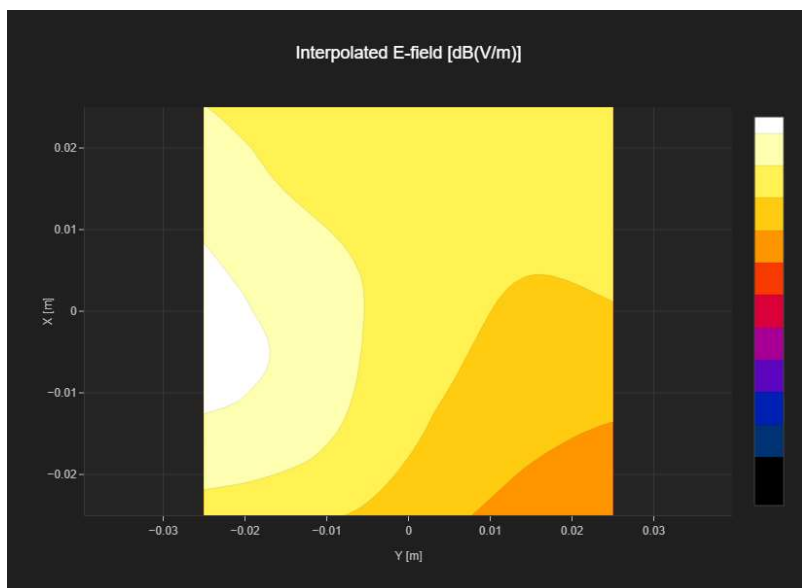
Band Name	Communication Systems Name	Channel	Frequency [MHz]
PCS 1900	GSM-FDD (TDMA, GMSK)	512	1850.2

## Grid Settings

Extent X [mm]	Extent Y [mm]	Step X [mm]	Step Y [mm]	Distance [mm]
50.0	50.0	10.0	10.0	15.0

## Results

Emax [dB(V/m)]	Eavg50x50 max [dB(V/m)]	MIF [dB]	RFail [dB(V/m)]
21.37	18.2	3.63	21.83



# RF Interference Potential Test Report

Measurement performed on October 25, 2023 at 13:00

## Device Under Test

Manufacturer	Model	Dimensions[mm]	Speaker Position [mm]
	S921U	147.17 x 70.6 x 7.61	146.17

## Hardware Setup

Probe Name	Probe Calibration Date	DAE Name	DAE Calibration Date
EF3DV3 - SN4066	July 12, 2023	DAE4 Sn1343	June 30, 2023

## Communication Systems

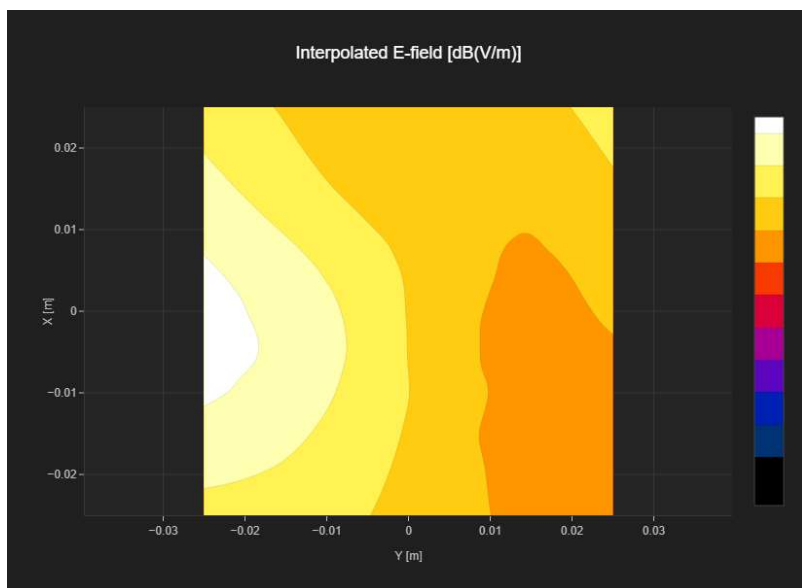
Band Name	Communication Systems Name	Channel	Frequency [MHz]
PCS 1900	GSM-FDD (TDMA, GMSK)	661	1880.0

## Grid Settings

Extent X [mm]	Extent Y [mm]	Step X [mm]	Step Y [mm]	Distance [mm]
50.0	50.0	10.0	10.0	15.0

## Results

Emax [dB(V/m)]	Eavg50x50 max [dB(V/m)]	MIF [dB]	RFail [dB(V/m)]
21.97	17.9	3.63	21.53





# RF Interference Potential Test Report

Measurement performed on October 25, 2023 at 13:05

## Device Under Test

Manufacturer	Model	Dimensions[mm]	Speaker Position [mm]
	S921U	147.17 x 70.6 x 7.61	146.17

## Hardware Setup

Probe Name	Probe Calibration Date	DAE Name	DAE Calibration Date
EF3DV3 - SN4066	July 12, 2023	DAE4 Sn1343	June 30, 2023

## Communication Systems

Band Name	Communication Systems Name	Channel	Frequency [MHz]
PCS 1900	GSM-FDD (TDMA, GMSK)	810	1909.8

## Grid Settings

Extent X [mm]	Extent Y [mm]	Step X [mm]	Step Y [mm]	Distance [mm]
50.0	50.0	10.0	10.0	15.0

## Results

E <sub>max</sub> [dB(V/m)]	E <sub>avg50x50 max</sub> [dB(V/m)]	MIF [dB]	RFail [dB(V/m)]
22.44	18.38	3.63	22.01

