

Measurement Report for SM-S921D, CHEEK, U-NII-5, IEEE 802.11ax (160MHz, MCS0, 99pc duty cycle), Channel 79 (6345.0 MHz)

Exposure Conditions

Phantom Section, TSL	Position, Test Distance [mm]	Band	Group, UID	Frequency [MHz], Channel Number	Conversion Factor	TSL Conductivity [S/m]	TSL Permittivity
RightHead, HSL	CHEEK, 0.00	U-NII-5	WLAN, 10755-AAC	6345.0, 79	5.6	5.98	34.2

Hardware Setup

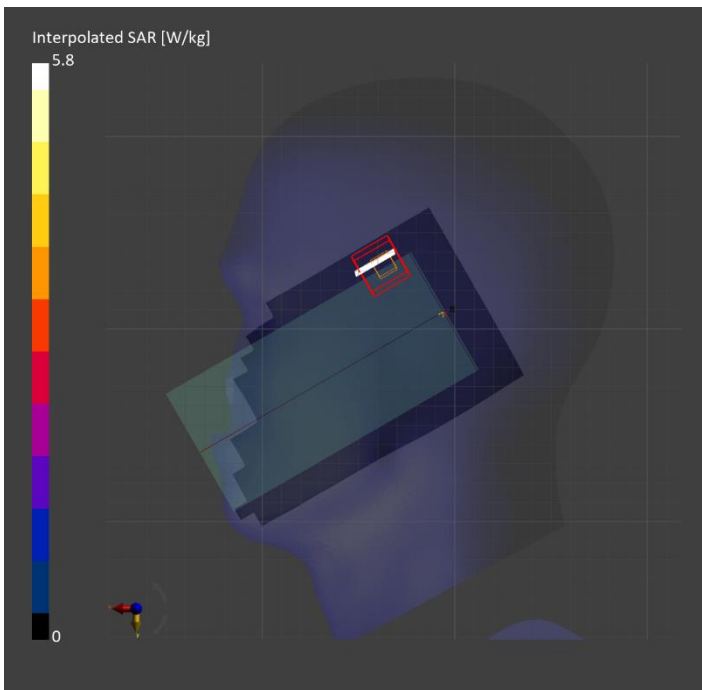
Phantom	TSL, Measured Date	Probe, Calibration Date	DAE, Calibration Date
Twin-SAM V8.0 (30deg probe tilt) - 2039	HBBL-600-10000	EX3DV4 - SN7646, 2023-03-23	DAE4 Sn1447, 2023-03-22

Scans Setup

	Area Scan	Zoom Scan
Grid Extents [mm]	102.0 x 187.0	22.0 x 22.0 x 22.0
Grid Steps [mm]	8.5 x 8.5	2.6 x 2.6 x 1.2
Sensor Surface [mm]	3.0	1.4

Measurement Results

	Area Scan	Zoom Scan
psSAR1g [W/Kg]	0.172	0.194
psSAR10g [W/Kg]	0.048	0.042
psAPD (1.0cm2, sq) [W/m2]		1.94
psAPD (4.0cm2, sq) [W/m2]		1.02
Power Drift [dB]		0.12



Measurement Report for SM-S921D, BACK, U-NII-5, IEEE 802.11ax (160MHz, MCS0, 99pc duty cycle), Channel 15 (6025.0 MHz)

Exposure Conditions

Phantom Section, TSL	Position, Test Distance [mm]	Band	Group, UID	Frequency [MHz], Channel Number	Conversion Factor	TSL Conductivity [S/m]	TSL Permittivity
Flat, HSL	BACK, 10.00	U-NII-5	WLAN, 10755-AAC	6025.0, 15	5.6	5.47	36.1

Hardware Setup

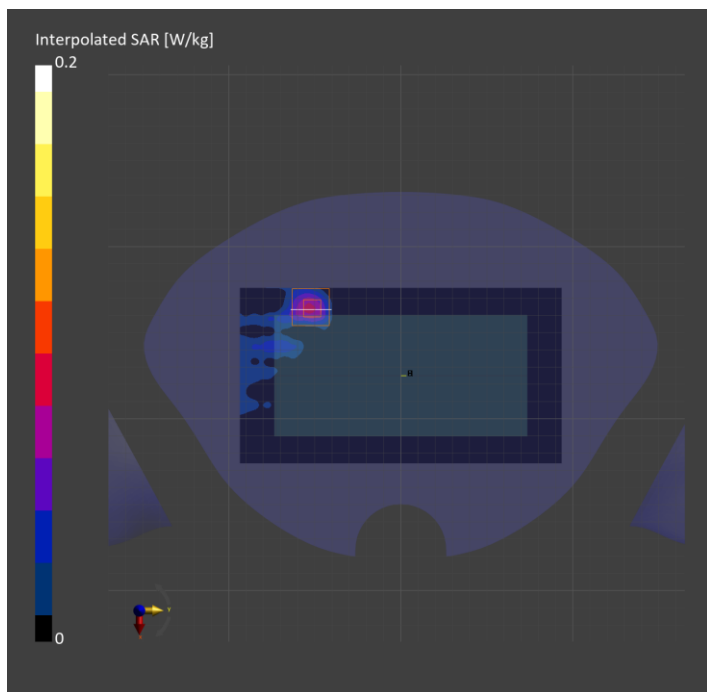
Phantom	TSL, Measured Date	Probe, Calibration Date	DAE, Calibration Date
Twin-SAM V8.0 (30deg probe tilt) - 2039	HBBL-600-10000	EX3DV4 - SN7646, 2023-03-23	DAE4 Sn1447, 2023-03-22

Scans Setup

	Area Scan	Zoom Scan
Grid Extents [mm]	102.0 x 187.0	22.0 x 22.0 x 22.0
Grid Steps [mm]	8.5 x 8.5	3.4 x 3.4 x 1.4
Sensor Surface [mm]	3.0	1.4

Measurement Results

	Area Scan	Zoom Scan
psSAR1g [W/Kg]	0.065	0.085
psSAR10g [W/Kg]	0.021	0.028
psAPD (1.0cm2, sq) [W/m2]		0.85.
psAPD (4.0cm2, sq) [W/m2]		0.629
Power Drift [dB]		-0.01



Measurement Report for SM-S921D, EDGE LEFT, U-NII-5, IEEE 802.11ax (160MHz, MCS0, 99pc duty cycle), Channel 15 (6025.0 MHz)

Exposure Conditions

Phantom Section, TSL	Position, Test Distance [mm]	Band	Group, UID	Frequency [MHz], Channel Number	Conversion Factor	TSL Conductivity [S/m]	TSL Permittivity
Flat, HSL	EDGE LEFT, 0.00	U-NII-5	WLAN, 10755-AAC	6025.0, 15	5.6	5.47	36.1

Hardware Setup

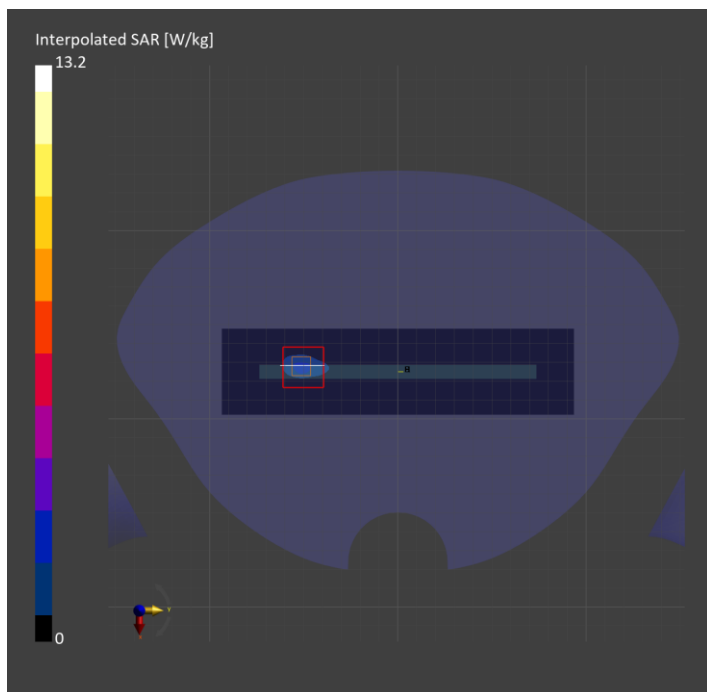
Phantom	TSL, Measured Date	Probe, Calibration Date	DAE, Calibration Date
Twin-SAM V8.0 (30deg probe tilt) - 2039	HBBL-600-10000	EX3DV4 - SN7646, 2023-03-23	DAE4 Sn1447, 2023-03-22

Scans Setup

	Area Scan	Zoom Scan
Grid Extents [mm]	45.7 x 187.0	22.0 x 22.0 x 22.0
Grid Steps [mm]	7.61 x 8.5	2.6 x 2.6 x 1.2
Sensor Surface [mm]	3.0	1.4

Measurement Results

	Area Scan	Zoom Scan
psSAR1g [W/Kg]	1.66	2.23
psSAR10g [W/Kg]	0.402	0.469
psAPD (1.0cm2, sq) [W/m2]		22.3
psAPD (4.0cm2, sq) [W/m2]		11.3
Power Drift [dB]		-0.00



Measurement Report for SM-S921D, CHEEK, U-NII-5, IEEE 802.11ax (160MHz, MCS0, 99pc duty cycle), Channel 15 (6025.0 MHz)

Exposure Conditions

Phantom Section, TSL	Position, Test Distance [mm]	Band	Group, UID	Frequency [MHz], Channel Number	Conversion Factor	TSL Conductivity [S/m]	TSL Permittivity
LeftHead, HSL	CHEEK, 0.00	U-NII-5	WLAN, 10755-AAC	6025.0, 15	5.6	5.30	35.2

Hardware Setup

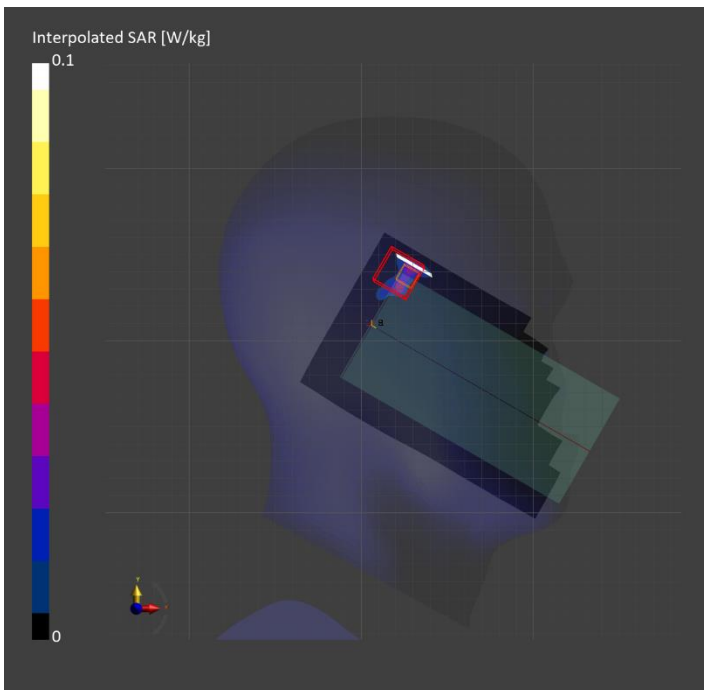
Phantom	TSL, Measured Date	Probe, Calibration Date	DAE, Calibration Date
Twin-SAM V8.0 (30deg probe tilt) - 2039	HBBL-600-10000	EX3DV4 - SN7646, 2023-03-23	DAE4 Sn1447, 2023-03-22

Scans Setup

	Area Scan	Zoom Scan
Grid Extents [mm]	102.0 x 187.0	22.0 x 22.0 x 22.0
Grid Steps [mm]	8.5 x 8.5	2.6 x 2.6 x 1.2
Sensor Surface [mm]	3.0	1.4

Measurement Results

	Area Scan	Zoom Scan
psSAR1g [W/Kg]	0.022	0.018
psSAR10g [W/Kg]	0.006	0.003
psAPD (1.0cm2, sq) [W/m2]		0.180
psAPD (4.0cm2, sq) [W/m2]		0.067
Power Drift [dB]		0.05



Measurement Report for SM-S921D, BACK, U-NII-5, IEEE 802.11ax (160MHz, MCS0, 99pc duty cycle), Channel 15 (6025.0 MHz)

Exposure Conditions

Phantom Section, TSL	Position, Test Distance [mm]	Band	Group, UID	Frequency [MHz], Channel Number	Conversion Factor	TSL Conductivity [S/m]	TSL Permittivity
Flat, HSL	BACK, 10.00	U-NII-5	WLAN, 10755-AAC	6025.0, 15	5.6	5.47	36.1

Hardware Setup

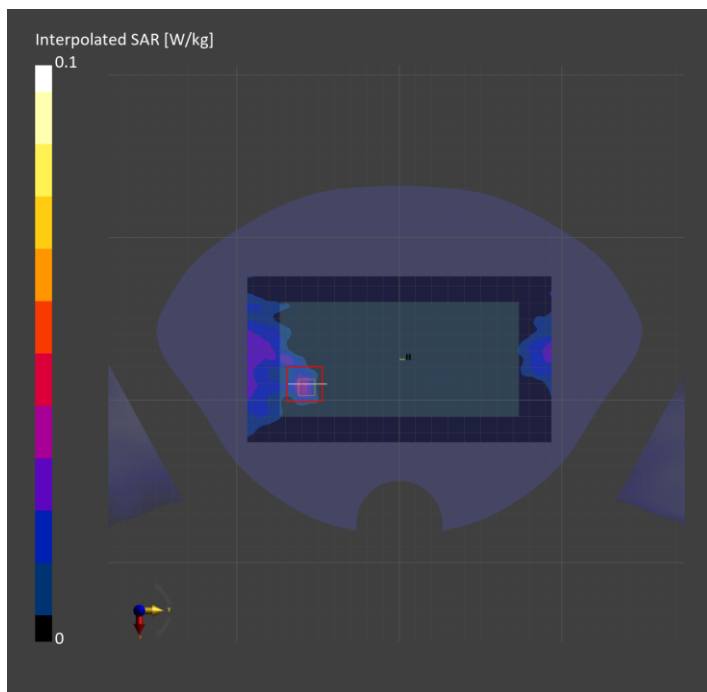
Phantom	TSL, Measured Date	Probe, Calibration Date	DAE, Calibration Date
Twin-SAM V8.0 (30deg probe tilt) - 2039	HBBL-600-10000	EX3DV4 - SN7646, 2023-03-23	DAE4 Sn1447, 2023-03-22

Scans Setup

	Area Scan	Zoom Scan
Grid Extents [mm]	102.0 x 187.0	22.0 x 22.0 x 22.0
Grid Steps [mm]	8.5 x 8.5	3.4 x 3.4 x 1.4
Sensor Surface [mm]	3.0	1.4

Measurement Results

	Area Scan	Zoom Scan
psSAR1g [W/Kg]	0.027	0.033
psSAR10g [W/Kg]	0.009	0.008
psAPD (1.0cm2, sq) [W/m2]		0.333
psAPD (4.0cm2, sq) [W/m2]		0.189
Power Drift [dB]		-0.19



Measurement Report for SM-S921D, BACK, U-NII-5, IEEE 802.11ax (160MHz, MCS0, 99pc duty cycle), Channel 15 (6025.0 MHz)

Exposure Conditions

Phantom Section, TSL	Position, Test Distance [mm]	Band	Group, UID	Frequency [MHz], Channel Number	Conversion Factor	TSL Conductivity [S/m]	TSL Permittivity
Flat, HSL	BACK, 0.00	U-NII-5	WLAN, 10755-AAC	6025.0, 15	5.6	5.30	35.2

Hardware Setup

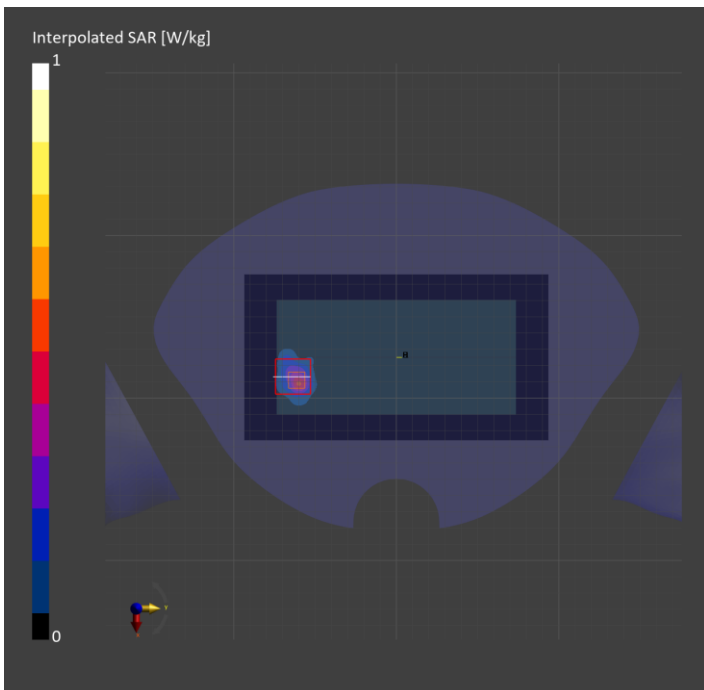
Phantom	TSL, Measured Date	Probe, Calibration Date	DAE, Calibration Date
Twin-SAM V8.0 (30deg probe tilt) - 2039	HBBL-600-10000	EX3DV4 - SN7646, 2023-03-23	DAE4 Sn1447, 2023-03-22

Scans Setup

	Area Scan	Zoom Scan
Grid Extents [mm]	102.0 x 187.0	22.0 x 22.0 x 22.0
Grid Steps [mm]	8.5 x 8.5	2.3 x 2.3 x 1.2
Sensor Surface [mm]	3.0	1.4

Measurement Results

	Area Scan	Zoom Scan
psSAR1g [W/Kg]	0.327	0.378
psSAR10g [W/Kg]	0.095	0.090
psAPD (1.0cm2, sq) [W/m2]		3.78
psAPD (4.0cm2, sq) [W/m2]		1.12
Power Drift [dB]		-0.07



Measurement Report for SM-S921D, CHEEK, U-NII-5, IEEE 802.11ax (160MHz, MCS0, 99pc duty cycle), Channel 79 (6345.0 MHz)

Exposure Conditions

Phantom Section, TSL	Position, Test Distance [mm]	Band	Group, UID	Frequency [MHz], Channel Number	Conversion Factor	TSL Conductivity [S/m]	TSL Permittivity
RightHead, HSL	CHEEK, 0.00	U-NII-5	WLAN, 10755-AAC	6345.0, 79	5.6	5.95	34.8

Hardware Setup

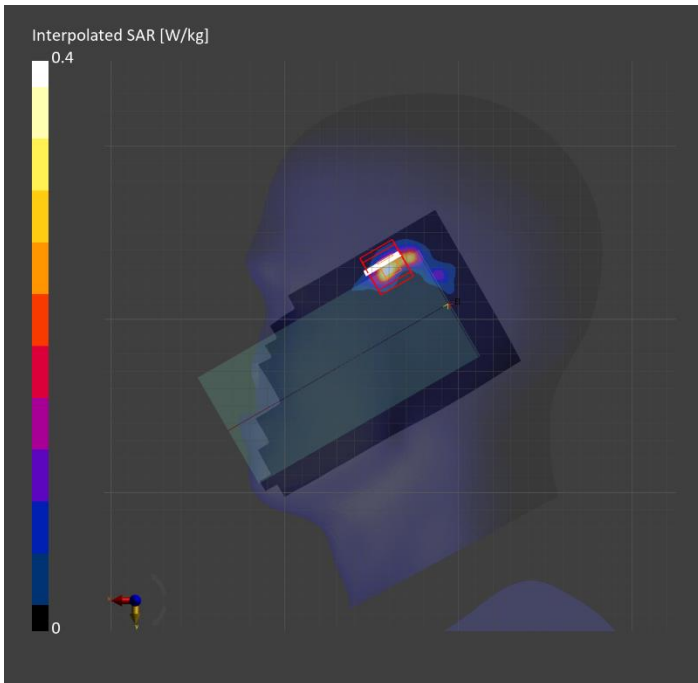
Phantom	TSL, Measured Date	Probe, Calibration Date	DAE, Calibration Date
Twin-SAM V8.0 (30deg probe tilt) - 2039	HBBL-600-10000 Charge:xxxx, 2024-Jan-11	EX3DV4 - SN7646, 2023-03-23	DAE4 Sn1447, 2023-03-22

Scans Setup

	Area Scan	Zoom Scan
Grid Extents [mm]	102.0 x 187.0	22.0 x 22.0 x 22.0
Grid Steps [mm]	8.5 x 8.5	2.6 x 2.6 x 1.2
Sensor Surface [mm]	3.0	1.4

Measurement Results

	Area Scan	Zoom Scan
psSAR1g [W/kg]	0.236	0.282
psSAR10g [W/kg]	0.063	0.062
psAPD (1.0cm ² , sq) [W/m ²]		2.82
psAPD (4.0cm ² , sq) [W/m ²]		1.50
Power Drift [dB]	0.63	-0.18



Measurement Report for SM-S921D, BACK, U-NII-5, IEEE 802.11ax (160MHz, MCS0, 99pc duty cycle), Channel 15 (6025.0 MHz)

Exposure Conditions

Phantom Section, TSL	Position, Test Distance [mm]	Band	Group, UID	Frequency [MHz], Channel Number	Conversion Factor	TSL Conductivity [S/m]	TSL Permittivity
Flat, HSL	BACK, 10.00	U-NII-5	WLAN, 10755-AAC	6025.0, 15	5.6	5.50	35.3

Hardware Setup

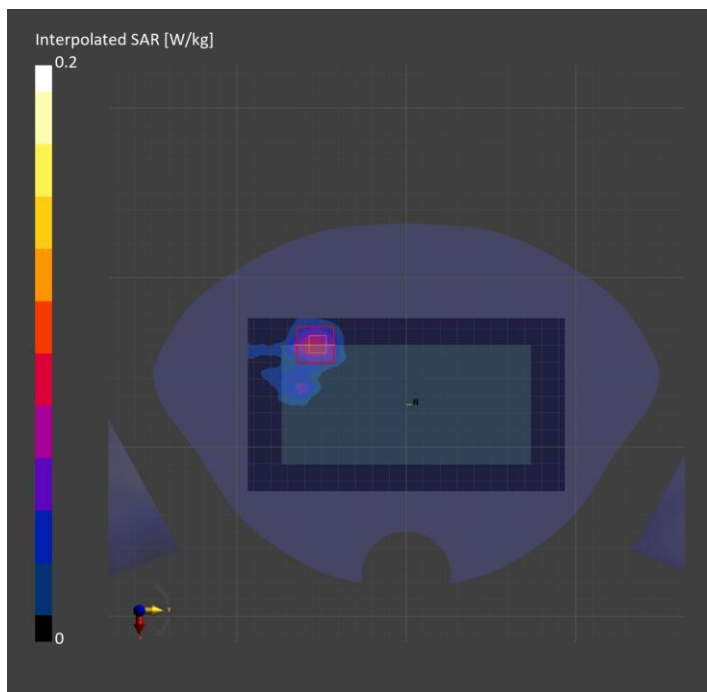
Phantom	TSL, Measured Date	Probe, Calibration Date	DAE, Calibration Date
Twin-SAM V8.0 (30deg probe tilt) - 2039	HBBL-600-10000	EX3DV4 - SN7646, 2023-03-23	DAE4 Sn1447, 2023-03-22

Scans Setup

	Area Scan	Zoom Scan
Grid Extents [mm]	102.0 x 187.0	22.0 x 22.0 x 22.0
Grid Steps [mm]	8.5 x 8.5	3.4 x 3.4 x 1.4
Sensor Surface [mm]	3.0	1.4

Measurement Results

	Area Scan	Zoom Scan
psSAR1g [W/Kg]	0.070	0.059
psSAR10g [W/Kg]	0.025	0.018
psAPD (1.0cm2, sq) [W/m2]		0.590
psAPD (4.0cm2, sq) [W/m2]		0.409
Power Drift [dB]		-0.15



Measurement Report for SM-S921D, EDGE LEFT, U-NII-5, IEEE 802.11ax (160MHz, MCS0, 99pc duty cycle), Channel 15 (6025.0 MHz)

Exposure Conditions

Phantom Section, TSL	Position, Test Distance [mm]	Band	Group, UID	Frequency [MHz], Channel Number	Conversion Factor	TSL Conductivity [S/m]	TSL Permittivity
Flat, HSL	EDGE LEFT, 0.00	U-NII-5	WLAN, 10755-AAC	6025.0, 15	5.6	5.50	35.3

Hardware Setup

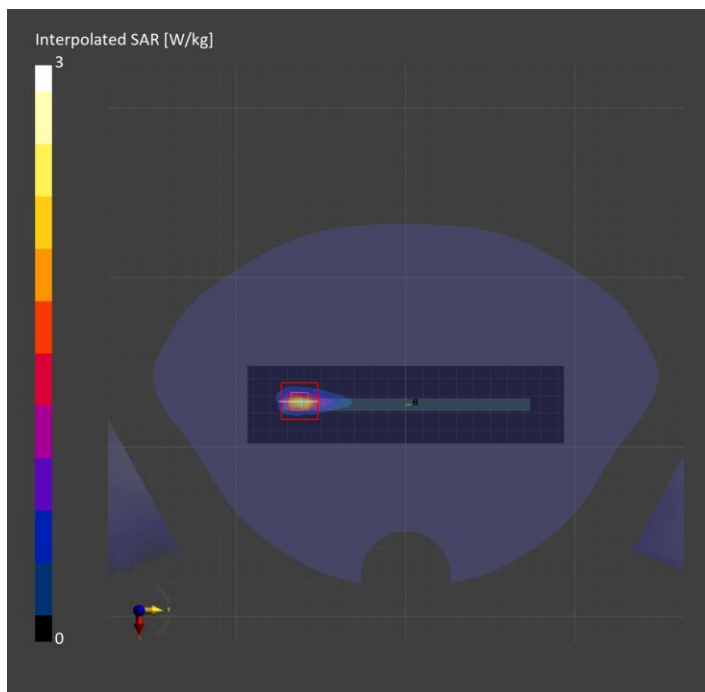
Phantom	TSL, Measured Date	Probe, Calibration Date	DAE, Calibration Date
Twin-SAM V8.0 (30deg probe tilt) - 2039	HBBL-600-10000	EX3DV4 - SN7646, 2023-03-23	DAE4 Sn1447, 2023-03-22

Scans Setup

	Area Scan	Zoom Scan
Grid Extents [mm]	45.7 x 187.0	22.0 x 22.0 x 22.0
Grid Steps [mm]	7.61 x 8.5	2.9 x 2.9 x 1.2
Sensor Surface [mm]	3.0	1.4

Measurement Results

	Area Scan	Zoom Scan
psSAR1g [W/Kg]	1.45	1.66
psSAR10g [W/Kg]	0.337	0.346
psAPD (1.0cm2, sq) [W/m2]		16.6
psAPD (4.0cm2, sq) [W/m2]		8.36
Power Drift [dB]		-0.04



Measurement Report for Device, EDGE LEFT, U-NII-5, IEEE 802.11ax (160MHz, MCS0, 99pc duty cycle), Channel 79 (6345.0 MHz)

Exposure Conditions

Phantom Section	Position, Test Distance [mm]	Band	Group, UID	Frequency [MHz], Channel Number	Conversion Factor
5G	EDGE LEFT, 2.00	U-NII-5	WLAN, 10755-AAC	6345.0, 79	1.0

Hardware Setup

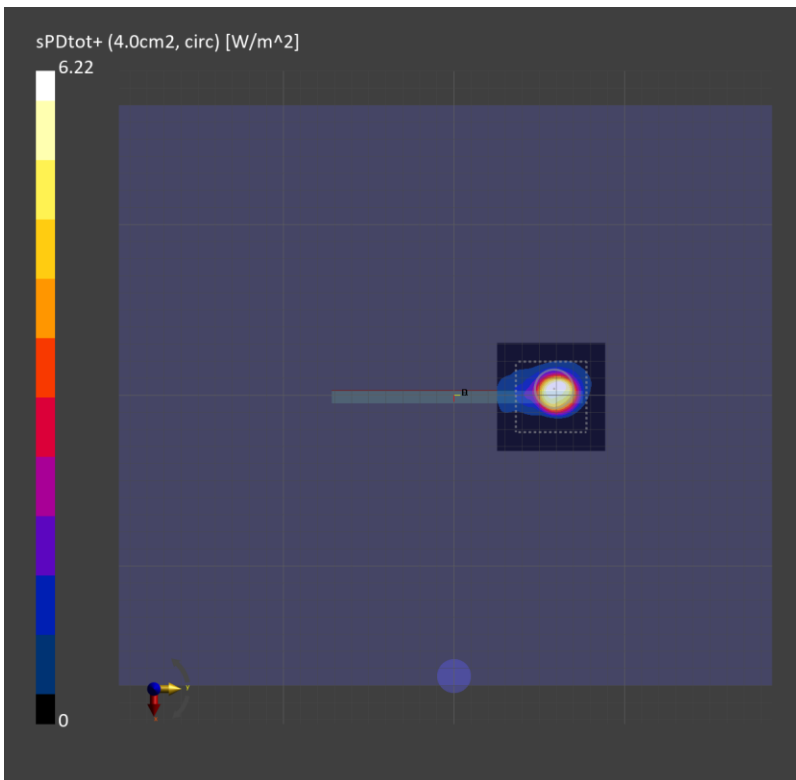
Phantom	Medium	Probe, Calibration Date	DAE, Calibration Date
mmWave - xxxx	Air -	EUmmWV4 - SN9559_F1-55GHz, 2023-02-16	DAE4 Sn1670, 2023-05-24

Scans Setup

Scan Type	5G Scan
Grid Extents [mm]	60.0 x 60.0
Grid Steps [lambda]	0.043202144247958554 x 0.043202144247958554
Sensor Surface [mm]	2.0

Measurement Results

Scan Type	5G Scan
Avg. Area [cm ²]	4.00
psPDn+ [W/m ²]	3.18
psPDtot+ [W/m ²]	6.22
psPDmod+ [W/m ²]	7.71
E _{max} [V/m]	112
Power Drift [dB]	-0.00



Measurement Report for Device, BACK, U-NII-5, IEEE 802.11ax (160MHz, MCS0, 99pc duty cycle), Channel 15 (6025.0 MHz)

Exposure Conditions

Phantom Section	Position, Test Distance [mm]	Band	Group, UID	Frequency [MHz], Channel Number	Conversion Factor
5G	BACK, 2.00	U-NII-5	WLAN, 10755-AAC	6025.0, 15	1.0

Hardware Setup

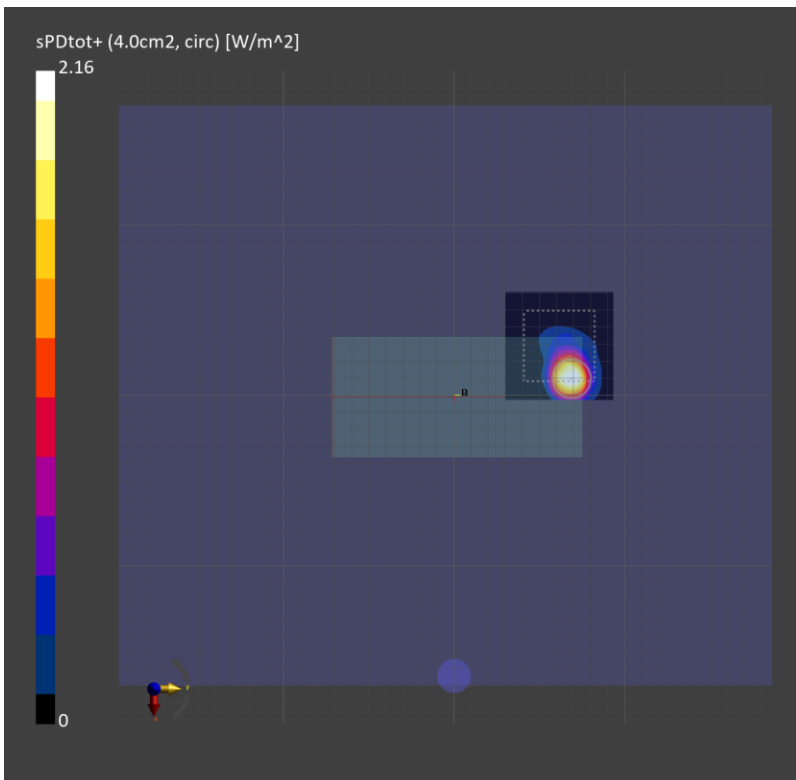
Phantom	Medium	Probe, Calibration Date	DAE, Calibration Date
mmWave - xxxx	Air -	EUmmWV4 - SN9559_F1-55GHz, 2023-02-16	DAE4 Sn1670, 2023-05-24

Scans Setup

Scan Type	5G Scan
Grid Extents [mm]	60.0 x 60.0
Grid Steps [lambda]	0.04102331270196222 x 0.04102331270196222
Sensor Surface [mm]	2.0

Measurement Results

Scan Type	5G Scan
Avg. Area [cm ²]	4.00
psPDn+ [W/m ²]	1.09
psPDtot+ [W/m ²]	2.16
psPDmod+ [W/m ²]	2.87
E _{max} [V/m]	67.7
Power Drift [dB]	0.14



Measurement Report for Device, EDGE LEFT, U-NII-5, IEEE 802.11ax (160MHz, MCS0, 99pc duty cycle), Channel 79 (6345.0 MHz)

Exposure Conditions

Phantom Section	Position, Test Distance [mm]	Band	Group, UID	Frequency [MHz], Channel Number	Conversion Factor
5G	EDGE LEFT, 2.00	U-NII-5	WLAN, 10755-AAC	6345.0, 79	1.0

Hardware Setup

Phantom	Medium	Probe, Calibration Date	DAE, Calibration Date
mmWave - xxxx	Air -	EUmmWV4 - SN9559_F1-55GHz, 2023-02-16	DAE4 Sn1670, 2023-05-24

Scans Setup

Scan Type	5G Scan
Grid Extents [mm]	60.0 x 60.0
Grid Steps [lambda]	0.043202144247958554 x 0.043202144247958554
Sensor Surface [mm]	2.0

Measurement Results

Scan Type	5G Scan
Avg. Area [cm ²]	4.00
psPDn+ [W/m ²]	3.54
psPDtot+ [W/m ²]	6.69
psPDmod+ [W/m ²]	7.92
E _{max} [V/m]	128
Power Drift [dB]	0.07

