

Measurement Report for SM-S921U, CHEEK, U-NII-5, IEEE 802.11ax (160MHz, MCS0, 99pc duty cycle), Channel 79 (6345.0 MHz)

Exposure Conditions

Phantom Section, TSL	Position, Test Distance [mm]	Band	Group, UID	Frequency [MHz], Channel Number	Conversion Factor	TSL Conductivity [S/m]	TSL Permittivity
RightHead, HSL	CHEEK, 0.00	U-NII-5	WLAN, 10755-AAC	6345.0, 79	5.4	6.01	33.8

Hardware Setup

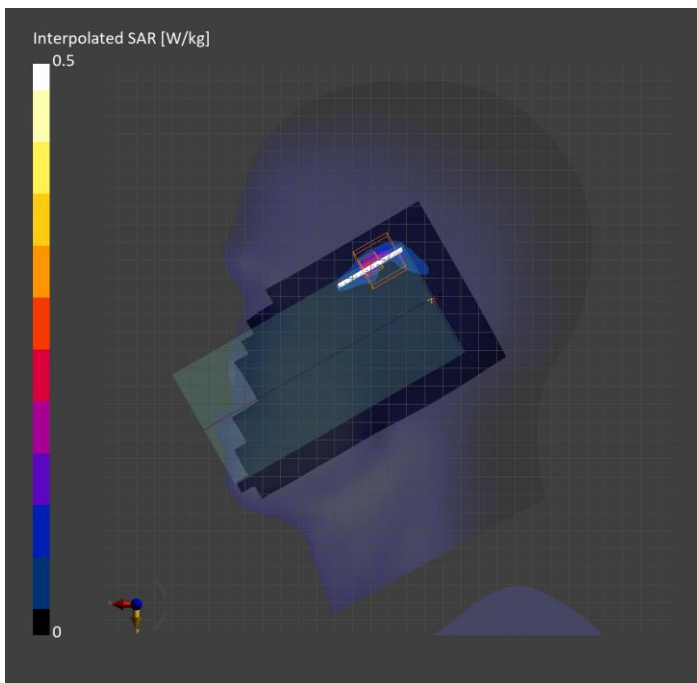
Phantom	TSL, Measured Date	Probe, Calibration Date	DAE, Calibration Date
Twin-SAM V8.0 (30deg probe tilt) - 2037	HBBL-600-10000 Charge:xxxx, 2023-Oct-17	EX3DV4 - SN7545, 2023-08-25	DAE4 Sn1468, 2023-08-24

Scans Setup

	Area Scan	Zoom Scan
Grid Extents [mm]	102.0 x 187.0	27.2 x 27.2 x 22.0
Grid Steps [mm]	8.5 x 8.5	3.4 x 3.4 x 1.4
Sensor Surface [mm]	3.0	1.4

Measurement Results

	Area Scan	Zoom Scan
psSAR1g [W/kg]	0.137	0.160
psSAR10g [W/kg]	0.031	0.032
psAPD (1.0cm ² , sq) [W/m ²]		1.60
psAPD (4.0cm ² , sq) [W/m ²]		0.842
Power Drift [dB]	-0.04	0.15



Measurement Report for SM-S921b, BACK, U-NII-5, IEEE 802.11ax (160MHz, MCS0, 99pc duty cycle), Channel 15 (6025.0 MHz)

Exposure Conditions

Phantom Section, TSL	Position, Test Distance [mm]	Band	Group, UID	Frequency [MHz], Channel Number	Conversion Factor	TSL Conductivity [S/m]	TSL Permittivity
Flat, HSL	BACK, 10.00	U-NII-5	WLAN, 10755-AAC	6025.0, 15	5.42	5.40	34.2

Hardware Setup

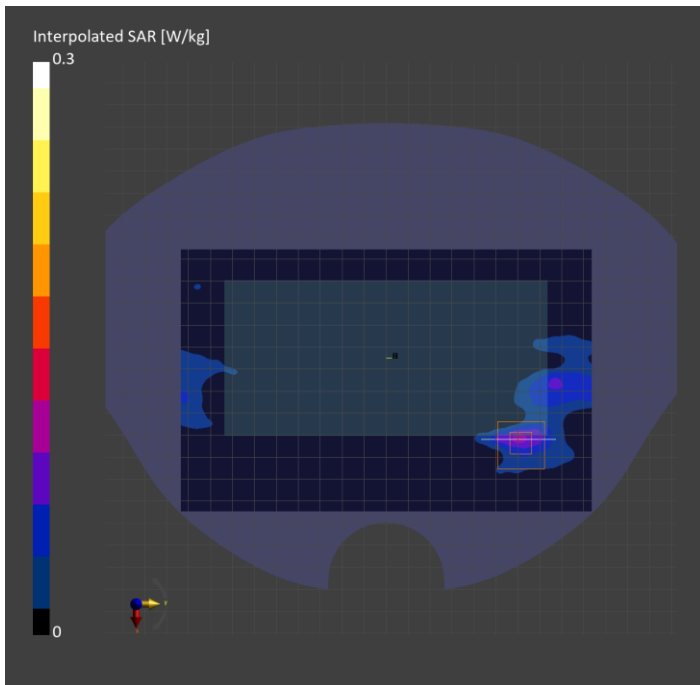
Phantom	TSL, Measured Date	Probe, Calibration Date	DAE, Calibration Date
Twin-SAM V8.0 (30deg probe tilt) - 1991	HBBL-600-10000 Charge:xxxx, 2023-Oct-19	EX3DV4 - SN7376, 2023-07-25	DAE4 Sn1667, 2023-04-24

Scans Setup

	Area Scan	Zoom Scan
Grid Extents [mm]	119.0 x 187.0	27.2 x 27.2 x 22.0
Grid Steps [mm]	8.5 x 8.5	3.4 x 3.4 x 1.4
Sensor Surface [mm]	3.0	1.4

Measurement Results

	Area Scan	Zoom Scan
psSAR1g [W/kg]	0.073	0.077
psSAR10g [W/kg]	0.022	0.026
psAPD (1.0cm ² , sq) [W/m ²]		0.773
psAPD (4.0cm ² , sq) [W/m ²]		0.587
Power Drift [dB]	0	-0.06



Measurement Report for SM-S921b, EDGE RIGHT, U-NII-5, IEEE 802.11ax (160MHz, MCS0, 99pc duty cycle), Channel 79 (6345.0 MHz)

Exposure Conditions

Phantom Section, TSL	Position, Test Distance [mm]	Band	Group, UID	Frequency [MHz], Channel Number	Conversion Factor	TSL Conductivity [S/m]	TSL Permittivity
Flat, HSL	EDGE RIGHT, 0.00	U-NII-5	WLAN, 10755-AAC	6345.0, 79	5.42	5.74	35.1

Hardware Setup

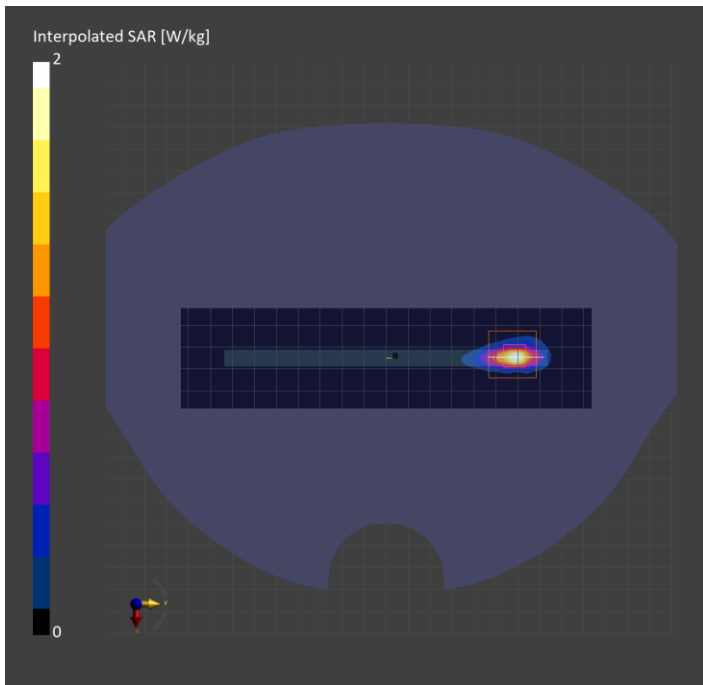
Phantom	TSL, Measured Date	Probe, Calibration Date	DAE, Calibration Date
Twin-SAM V8.0 (30deg probe tilt) - 1991	HBBL-600-10000 Charge:xxxx, 2023-Oct-18	EX3DV4 - SN7376, 2023-07-25	DAE4 Sn1667, 2023-04-24

Scans Setup

	Area Scan	Zoom Scan
Grid Extents [mm]	45.7 x 187.0	22.0 x 22.0 x 22.0
Grid Steps [mm]	7.61 x 8.5	2.6 x 2.6 x 1.2
Sensor Surface [mm]	3.0	1.4

Measurement Results

	Area Scan	Zoom Scan
psSAR1g [W/kg]	1.04	1.26
psSAR10g [W/kg]	0.229	0.266
psAPD (1.0cm ² , sq) [W/m ²]		12.6
psAPD (4.0cm ² , sq) [W/m ²]		6.37
Power Drift [dB]	0.19	-0.17



Measurement Report for SM-S921U, TILT, U-NII-5, IEEE 802.11ax (160MHz, MCS0, 99pc duty cycle), Channel 15 (6025.0 MHz)

Exposure Conditions

Phantom Section, TSL	Position, Test Distance [mm]	Band	Group, UID	Frequency [MHz], Channel Number	Conversion Factor	TSL Conductivity [S/m]	TSL Permittivity
LeftHead, HSL	TILT, 0.00	U-NII-5	WLAN, 10755-AAC	6025.0, 15	5.4	5.56	34.2

Hardware Setup

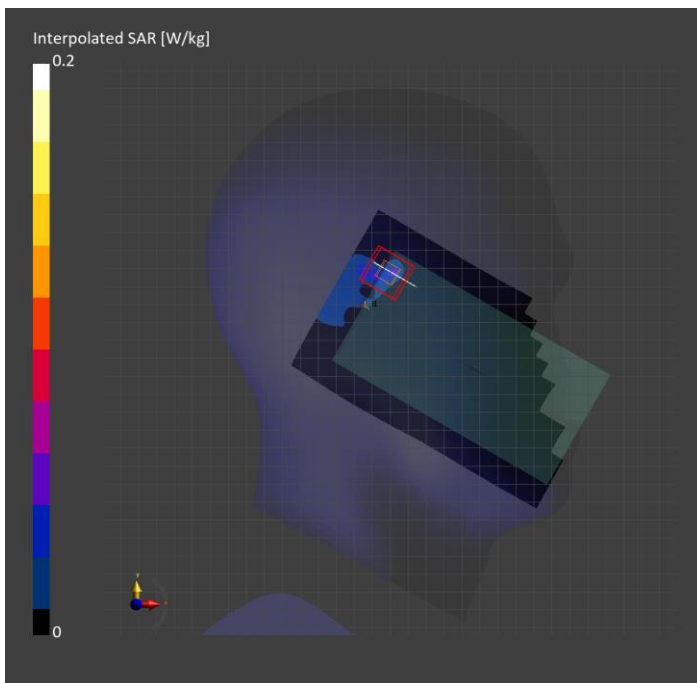
Phantom	TSL, Measured Date	Probe, Calibration Date	DAE, Calibration Date
Twin-SAM V8.0 (30deg probe tilt) - 2037	HBBL-600-10000 Charge:xxxx, 2023-Oct-17	EX3DV4 - SN7545, 2023-08-25	DAE4 Sn1468, 2023-08-24

Scans Setup

	Area Scan	Zoom Scan
Grid Extents [mm]	102.0 x 187.0	27.2 x 27.2 x 22.0
Grid Steps [mm]	8.5 x 8.5	3.4 x 3.4 x 1.4
Sensor Surface [mm]	3.0	1.4

Measurement Results

	Area Scan	Zoom Scan
psSAR1g [W/kg]	0.033	0.039
psSAR10g [W/kg]	0.011	0.31
psAPD (1.0cm ² , sq) [W/m ²]		0.386
psAPD (4.0cm ² , sq) [W/m ²]		0.234
Power Drift [dB]	1.23	0.10



Measurement Report for SM-S921b, BACK, U-NII-5, IEEE 802.11ax (160MHz, MCS0, 99pc duty cycle), Channel 79 (6345.0 MHz)

Exposure Conditions

Phantom Section, TSL	Position, Test Distance [mm]	Band	Group, UID	Frequency [MHz], Channel Number	Conversion Factor	TSL Conductivity [S/m]	TSL Permittivity
Flat, HSL	BACK, 10.00	U-NII-5	WLAN, 10755-AAC	6345.0, 79	5.42	6.01	33.8

Hardware Setup

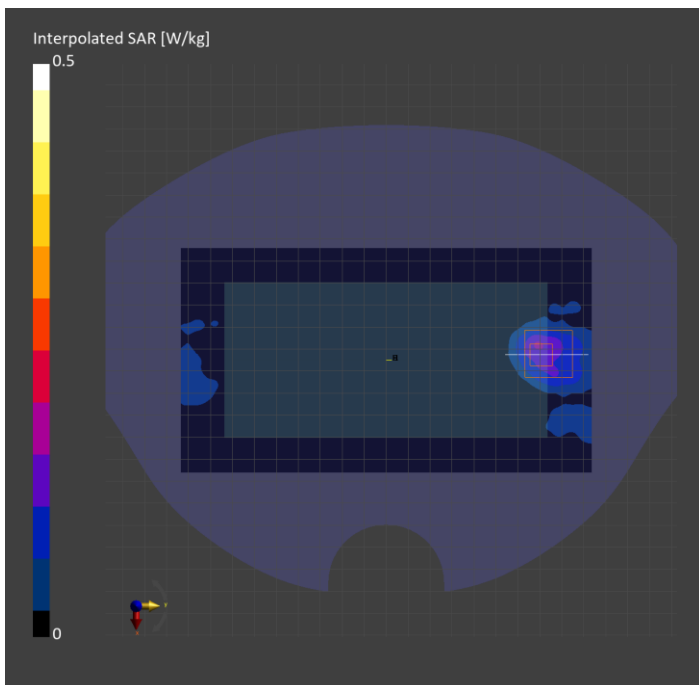
Phantom	TSL, Measured Date	Probe, Calibration Date	DAE, Calibration Date
Twin-SAM V8.0 (30deg probe tilt) - 1991	HBBL-600-10000 Charge:xxxx, 2023-Oct-17	EX3DV4 - SN7376, 2023-07-25	DAE4 Sn1667, 2023-04-24

Scans Setup

	Area Scan	Zoom Scan
Grid Extents [mm]	102.0 x 187.0	23.8 x 23.8 x 22.0
Grid Steps [mm]	8.5 x 8.5	3.4 x 3.4 x 1.4
Sensor Surface [mm]	3.0	1.4

Measurement Results

	Area Scan	Zoom Scan
psSAR1g [W/kg]	0.127	0.116
psSAR10g [W/kg]	0.118	0.041
psAPD (1.0cm ² , sq) [W/m ²]		1.16
psAPD (4.0cm ² , sq) [W/m ²]		0.929
Power Drift [dB]	-0.08	-0.17



Measurement Report for SM-S921b, BACK, U-NII-5, IEEE 802.11ax (160MHz, MCS0, 99pc duty cycle), Channel 15 (6025.0 MHz)

Exposure Conditions

Phantom Section, TSL	Position, Test Distance [mm]	Band	Group, UID	Frequency [MHz], Channel Number	Conversion Factor	TSL Conductivity [S/m]	TSL Permittivity
Flat, HSL	BACK, 0.00	U-NII-5	WLAN, 10755-AAC	6025.0, 15	5.42	5.56	34.2

Hardware Setup

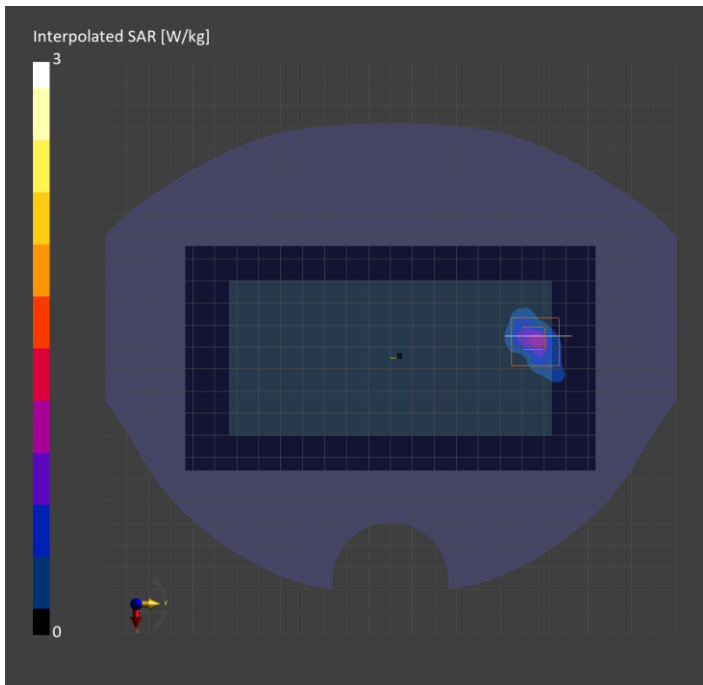
Phantom	TSL, Measured Date	Probe, Calibration Date	DAE, Calibration Date
Twin-SAM V8.0 (30deg probe tilt) - 1991	HBBL-600-10000 Charge:xxxx, 2023-Oct-17	EX3DV4 - SN7376, 2023-07-25	DAE4 Sn1667, 2023-04-24

Scans Setup

	Area Scan	Zoom Scan
Grid Extents [mm]	102.0 x 187.0	23.8 x 23.8 x 22.0
Grid Steps [mm]	8.5 x 8.5	3.4 x 3.4 x 1.4
Sensor Surface [mm]	3.0	1.4

Measurement Results

	Area Scan	Zoom Scan
psSAR1g [W/kg]	0.773	0.891
psSAR10g [W/kg]	0.218	0.233
psAPD (1.0cm ² , sq) [W/m ²]		8.91
psAPD (4.0cm ² , sq) [W/m ²]		5.45
Power Drift [dB]	0.17	-0.09



Measurement Report for SM-S921U, CHEEK, U-NII-5, IEEE 802.11ax (160MHz, MCS0, 99pc duty cycle), Channel 79 (6345.0 MHz)

Exposure Conditions

Phantom Section, TSL	Position, Test Distance [mm]	Band	Group, UID	Frequency [MHz], Channel Number	Conversion Factor	TSL Conductivity [S/m]	TSL Permittivity
RightHead, HSL	CHEEK, 0.00	U-NII-5	WLAN, 10755-AAC	6345.0, 79	5.4	5.80	34.0

Hardware Setup

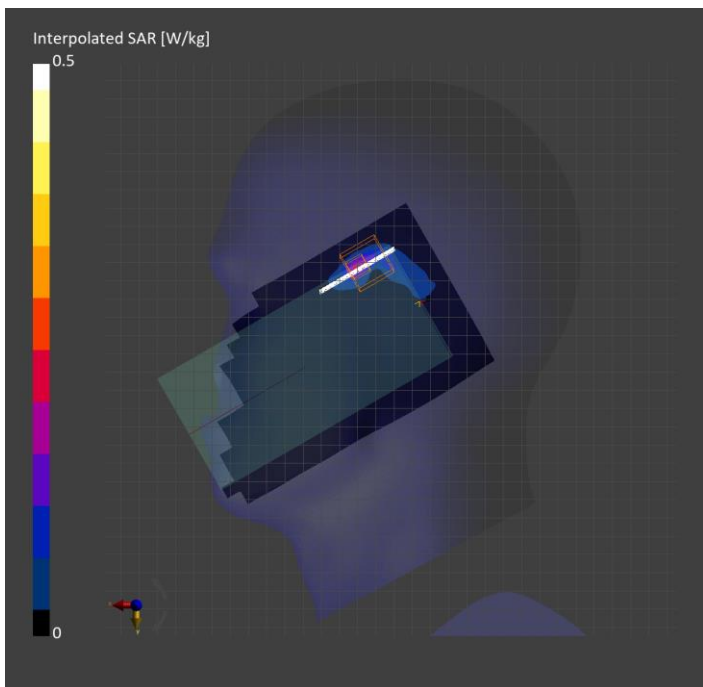
Phantom	TSL, Measured Date	Probe, Calibration Date	DAE, Calibration Date
Twin-SAM V8.0 (30deg probe tilt) - 2037	HBBL-600-10000 Charge:xxxx, 2023-Oct-16	EX3DV4 - SN7545, 2023-08-25	DAE4 Sn1468, 2023-08-24

Scans Setup

	Area Scan	Zoom Scan
Grid Extents [mm]	102.0 x 187.0	27.2 x 27.2 x 22.0
Grid Steps [mm]	8.5 x 8.5	3.4 x 3.4 x 1.4
Sensor Surface [mm]	3.0	1.4

Measurement Results

	Area Scan	Zoom Scan
psSAR1g [W/kg]	0.130	0.130
psSAR10g [W/kg]	0.035	0.031
psAPD (1.0cm ² , sq) [W/m ²]		1.30
psAPD (4.0cm ² , sq) [W/m ²]		0.777
Power Drift [dB]	0.46	0.91



Measurement Report for SM-S921b, EDGE RIGHT, U-NII-5, IEEE 802.11 ax (160MHz, MCS0, 99pc duty cycle), Channel 79 (6345.0 MHz)

Exposure Conditions

Phantom Section, TSL	Position, Test Distance [mm]	Band	Group, UID	Frequency [MHz], Channel Number	Conversion Factor	TSL Conductivity [S/m]	TSL Permittivity
Flat, HSL	EDGE RIGHT, 0.00	U-NII-5	WLAN, 10755-AAC	6345.0, 79	5.42	5.85	33.6

Hardware Setup

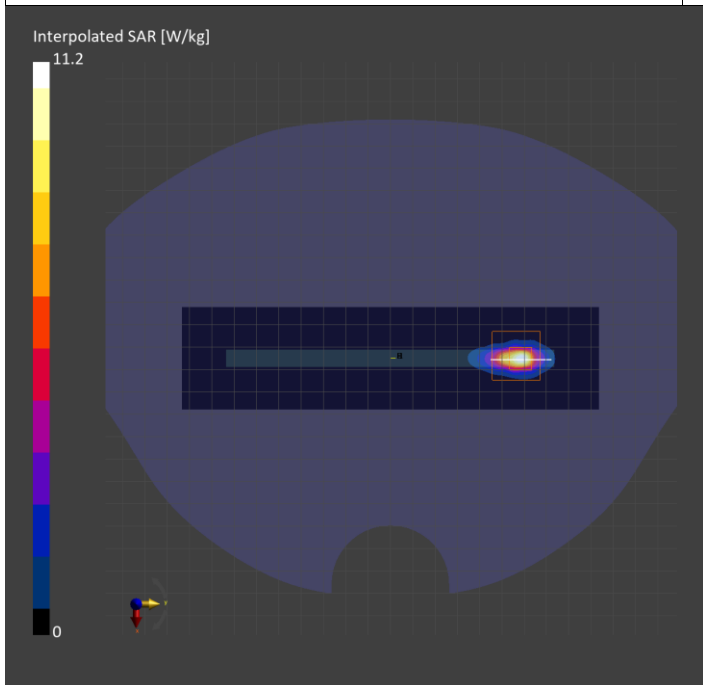
Phantom	TSL, Measured Date	Probe, Calibration Date	DAE, Calibration Date
Twin-SAM V8.0 (30deg probe tilt) - 1991	HBBL-600-10000 Charge:xxxx, 2023-Oct-19	EX3DV4 - SN7376, 2023-07-25	DAE4 Sn1667, 2023-04-24

Scans Setup

	Area Scan	Zoom Scan
Grid Extents [mm]	45.7 x 187.0	27.2 x 27.2 x 22.0
Grid Steps [mm]	7.61 x 8.5	3.4 x 3.4 x 1.4
Sensor Surface [mm]	3.0	1.4

Measurement Results

	Area Scan	Zoom Scan
psSAR1g [W/kg]	1.64	1.88
psSAR10g [W/kg]	0.355	0.396
psAPD (1.0cm ² , sq) [W/m ²]		18.8
psAPD (4.0cm ² , sq) [W/m ²]		9.48
Power Drift [dB]	0.03	-0.16



Measurement Report for SM-S921b, BACK, U-NII-6, IEEE 802.11ax (160MHz, MCS0, 99pc duty cycle), Channel 111 (6505.0 MHz)

Exposure Conditions

Phantom Section, TSL	Position, Test Distance [mm]	Band	Group, UID	Frequency [MHz], Channel Number	Conversion Factor	TSL Conductivity [S/m]	TSL Permittivity
Flat, HSL	BACK, 10.00	U-NII-6	WLAN, 10755-AAC	6505.0, 111	5.42	6.03	33.4

Hardware Setup

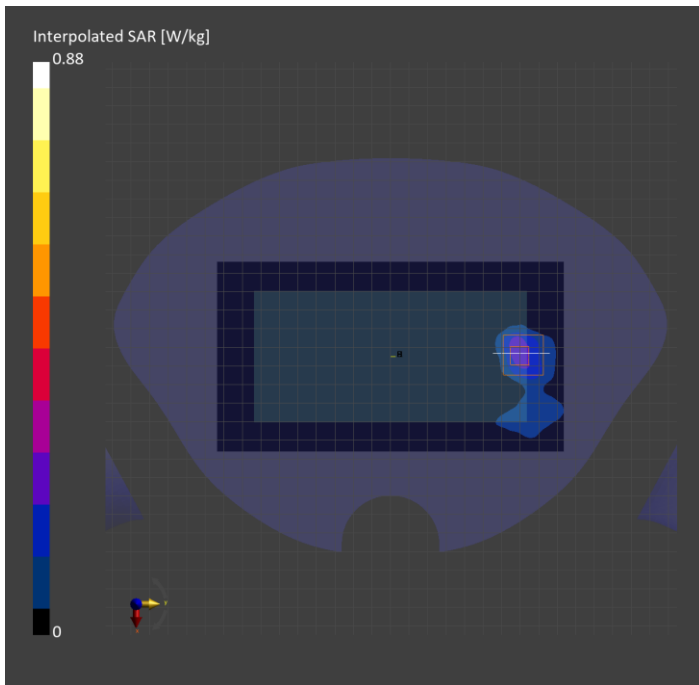
Phantom	TSL, Measured Date	Probe, Calibration Date	DAE, Calibration Date
Twin-SAM V8.0 (30deg probe tilt) - 1991	HBBL-600-10000 Charge:xxxx, 2023-Oct-19	EX3DV4 - SN7376, 2023-07-25	DAE4 Sn1667, 2023-04-24

Scans Setup

	Area Scan	Zoom Scan
Grid Extents [mm]	102.0 x 187.0	27.2 x 27.2 x 22.0
Grid Steps [mm]	8.5 x 8.5	3.4 x 3.4 x 1.4
Sensor Surface [mm]	3.0	1.4

Measurement Results

	Area Scan	Zoom Scan
psSAR1g [W/kg]	0.213	0.216
psSAR10g [W/kg]	0.077	0.074
psAPD (1.0cm ² , sq) [W/m ²]		2.16
psAPD (4.0cm ² , sq) [W/m ²]		1.68
Power Drift [dB]	0.19	-0.10



Measurement Report for Device, EDGE LEFT, U-NII-5, IEEE 802.11ax (160MHz, MCS0, 99pc duty cycle), Channel 79 (6345.0 MHz)

Exposure Conditions

Phantom Section	Position, Test Distance [mm]	Band	Group, UID	Frequency [MHz], Channel Number	Conversion Factor
5G	EDGE LEFT, 2.00	U-NII-5	WLAN, 10755-AAC	6345.0, 79	1.0

Hardware Setup

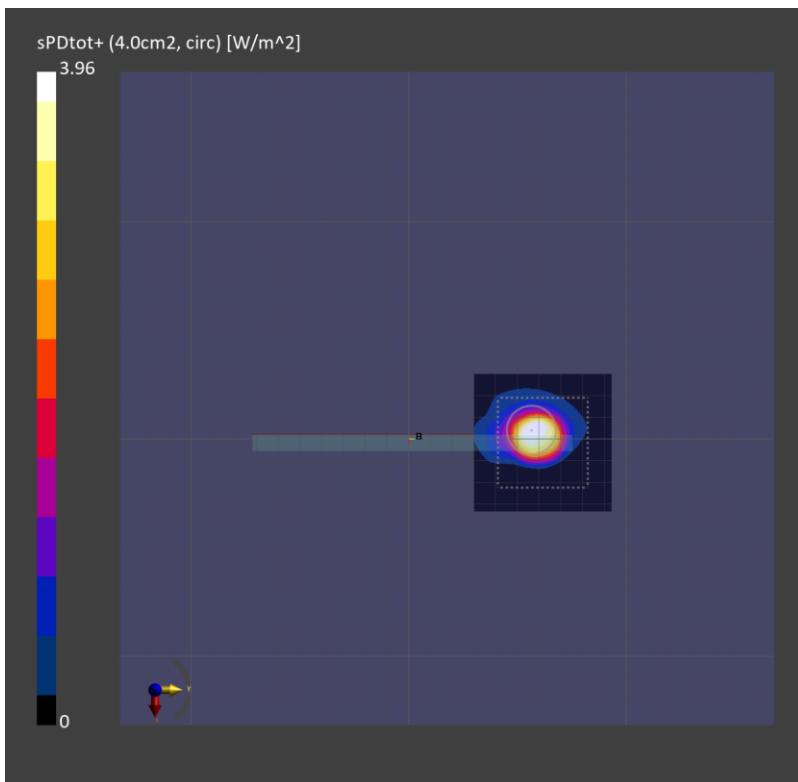
Phantom	Medium	Probe, Calibration Date	DAE, Calibration Date
mmWave - xxxx	Air -	EUmmWV4 - SN9559_F1-55GHz, 2023-02-16	DAE4 Sn1468, 2023-08-24

Scans Setup

Scan Type	5G Scan
Grid Extents [mm]	60.0 x 60.0
Grid Steps [lambda]	0.043202144247958554 x 0.043202144247958554
Sensor Surface [mm]	2.0

Measurement Results

Scan Type	5G Scan
Avg. Area [cm ²]	4.00
psPDn+ [W/m ²]	2.29
psPDtot+ [W/m ²]	3.96
psPDmod+ [W/m ²]	5.42
E _{max} [V/m]	104
Power Drift [dB]	-0.15



Measurement Report for Device, BACK, U-NII-5, IEEE 802.11ax (160MHz, MCS0, 99pc duty cycle), Channel 15 (6025.0 MHz)

Exposure Conditions

Phantom Section	Position, Test Distance [mm]	Band	Group, UID	Frequency [MHz], Channel Number	Conversion Factor
5G	BACK, 2.00	U-NII-5	WLAN, 10755-AAC	6025.0, 15	1.0

Hardware Setup

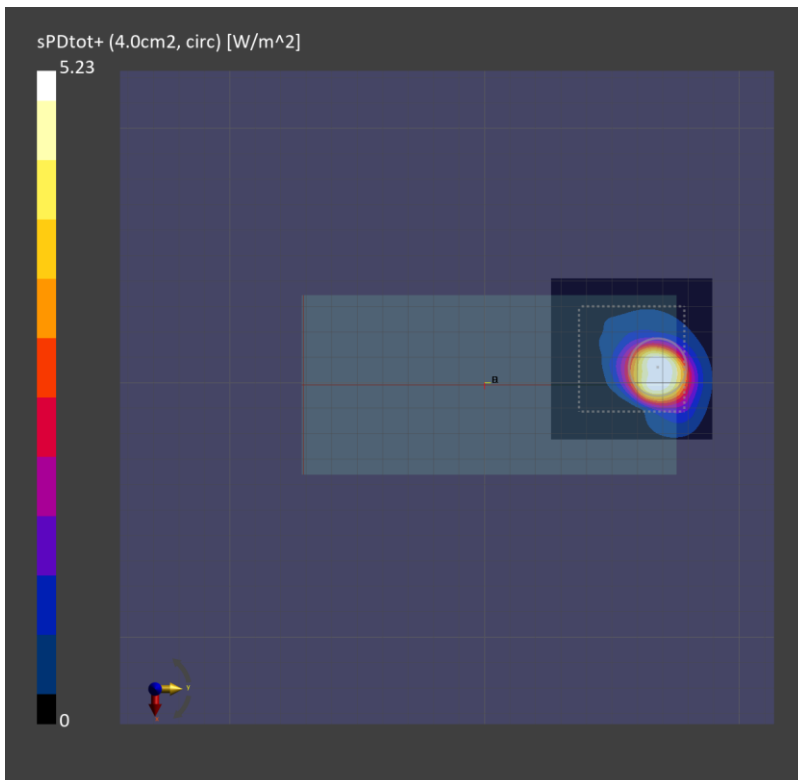
Phantom	Medium	Probe, Calibration Date	DAE, Calibration Date
mmWave - xxxx	Air -	EUmmWV4 - SN9559_F1-55GHz, 2023-02-16	DAE4 Sn1468, 2023-08-24

Scans Setup

Scan Type	5G Scan
Grid Extents [mm]	60.0 x 60.0
Grid Steps [lambda]	0.04102331270196222 x 0.04102331270196222
Sensor Surface [mm]	2.0

Measurement Results

Scan Type	5G Scan
Avg. Area [cm ²]	4.00
psPDn+ [W/m ²]	2.81
psPDtot+ [W/m ²]	5.23
psPDmod+ [W/m ²]	6.83
E _{max} [V/m]	81.2
Power Drift [dB]	-0.07



Measurement Report for Device, EDGE LEFT, U-NII-5, IEEE 802.11ax (160MHz, MCS0, 99pc duty cycle), Channel 79 (6345.0 MHz)

Exposure Conditions

Phantom Section	Position, Test Distance [mm]	Band	Group, UID	Frequency [MHz], Channel Number	Conversion Factor
5G	EDGE LEFT, 2.00	U-NII-5	WLAN, 10755-AAC	6345.0, 79	1.0

Hardware Setup

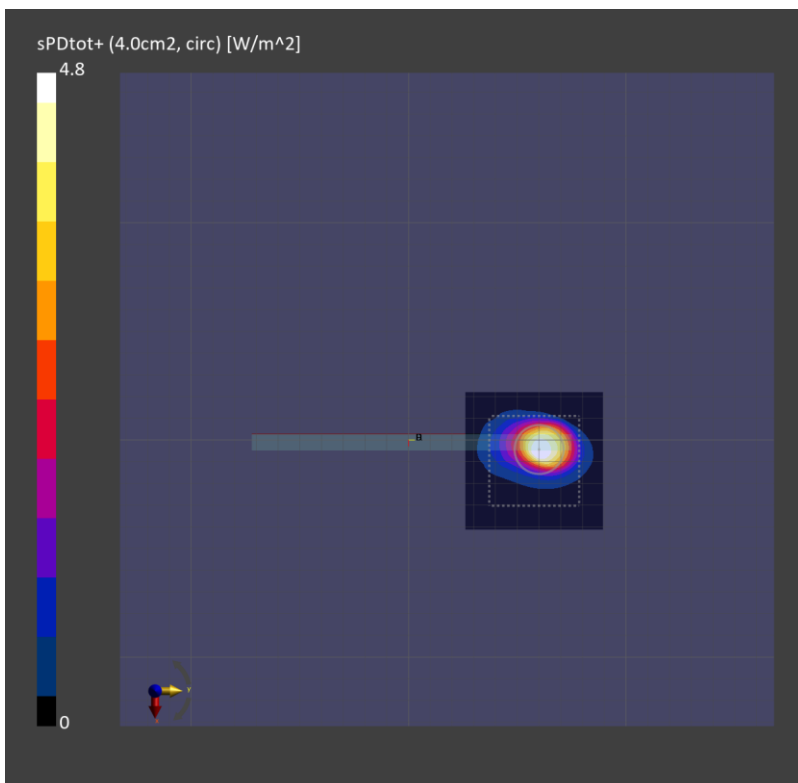
Phantom	Medium	Probe, Calibration Date	DAE, Calibration Date
mmWave - xxxx	Air -	EUmmWV4 - SN9559_F1-55GHz, 2023-02-16	DAE4 Sn1468, 2023-08-24

Scans Setup

Scan Type	5G Scan
Grid Extents [mm]	60.0 x 60.0
Grid Steps [lambda]	0.043202144247958554 x 0.043202144247958554
Sensor Surface [mm]	2.0

Measurement Results

Scan Type	5G Scan
Avg. Area [cm ²]	4.00
psPDn+ [W/m ²]	2.50
psPDtot+ [W/m ²]	4.80
psPDmod+ [W/m ²]	6.55
E _{max} [V/m]	106
Power Drift [dB]	-0.02



Measurement Report for Device, , CW, Channel 0 (6500.0 MHz)

Exposure Conditions

Phantom Section, TSL	Position, Test Distance [mm]	Band	Group, UID	Frequency [MHz], Channel Number	Conversion Factor	TSL Conductivity [S/m]	TSL Permittivity
Flat, HSL	,		CW, 0--	6500.0, 0	5.42	6.03	33.5

Hardware Setup

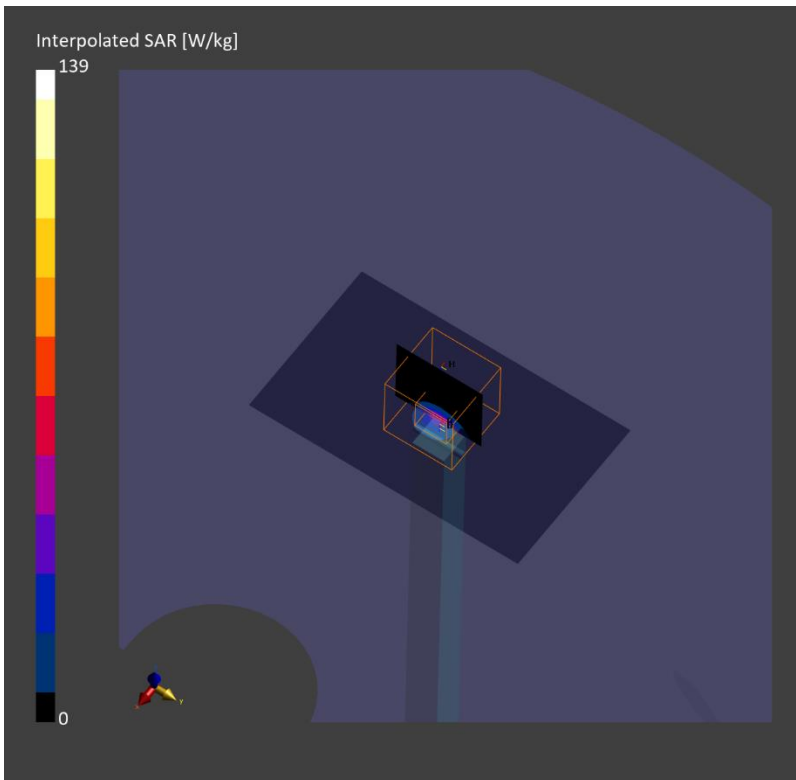
Phantom	TSL, Measured Date	Probe, Calibration Date	DAE, Calibration Date
Twin-SAM V8.0 (30deg probe tilt) - 1991	HBBL-600-10000 Charge:xxxx, 2023-Oct-19	EX3DV4 - SN7376, 2023-07-25	DAE4 Sn1667, 2023-04-24

Scans Setup

	Area Scan	Zoom Scan
Grid Extents [mm]	51.0 x 85.0	22.0 x 22.0 x 22.0
Grid Steps [mm]	8.5 x 8.5	3.4 x 3.4 x 1.4
Sensor Surface [mm]	3.0	1.4

Measurement Results

	Area Scan	Zoom Scan
psSAR1g [W/Kg]	23.5	26.2
psSAR10g [W/Kg]	4.90	5.47
Power Drift [dB]	-0.04	0.01



System Performance Check Report

Summary

Dipole	Frequency [MHz]	TSL	Power [dBm]	Dev. 1g [%]	Dev. 10g [%]	Dev. Peak [%]	Iso. Error [%]
D6.5GHzV2 - SN1010	6500.0	HSL	20.0	-7.0	-4.6	-16.5	2.5

Exposure Conditions

Phantom Section, TSL	Test Distance [mm]	Band	Group, UID	Frequency [MHz], Channel Number	Conversion Factor	TSL Conductivity [S/m]	TSL Permittivity
Flat, HSL	5		CW, 0--	6500.0, 0	5.4	6.07	35.9

Hardware Setup

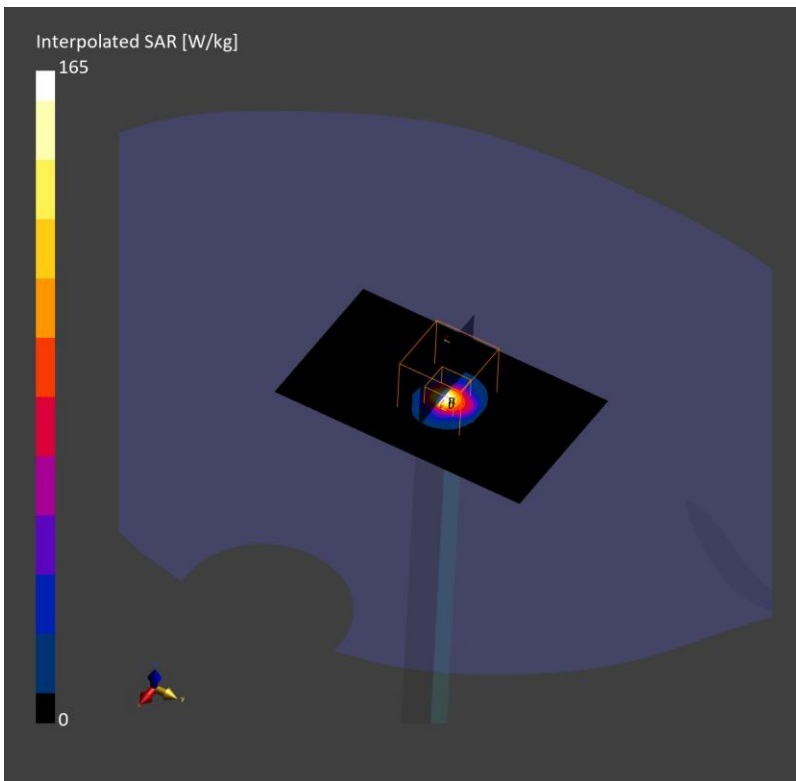
Phantom	TSL, Measured Date	Probe, Calibration Date	DAE, Calibration Date
Twin-SAM V8.0 (30deg probe tilt) - 2037	HBBL-600-10000 Charge:xxxx, 2023-Oct-08	EX3DV4 - SN7545, 2023-08-25	DAE4 Sn1468, 2023-08-24

Scans Setup

	Area Scan	Zoom Scan
Grid Extents [mm]	51.0 x 85.0	22.0 x 22.0 x 22.0
Grid Steps [mm]	8.5 x 8.5	3.4 x 3.4 x 1.4
Sensor Surface [mm]	3.0	1.4

Measurement Results

	Area Scan	Zoom Scan
psSAR1g [W/Kg]	21.5	26.3
psSAR10g [W/Kg]	4.47	4.99
Power Drift [dB]	-0.03	-0.2



Measurement Report for Device, FRONT, Validation band, CW, Channel 10000 (10000.0 MHz)

Exposure Conditions

Phantom Section	Position, Test Distance [mm]	Band	Group, UID	Frequency [MHz], Channel Number	Conversion Factor
5G	FRONT, 10.00	Validation band	CW, 0--	10000.0, 10000	1.0

Hardware Setup

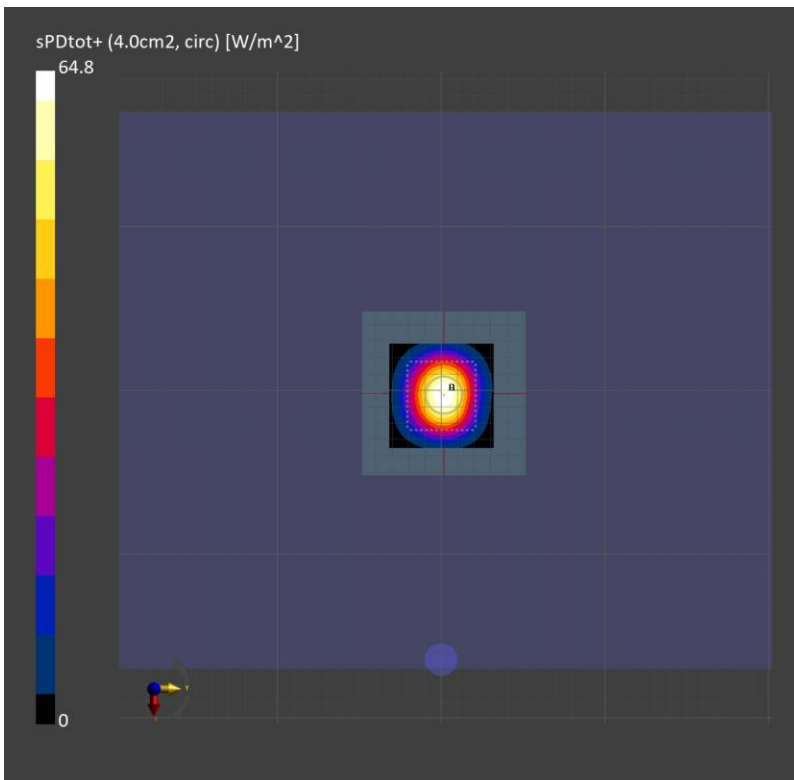
Phantom	Medium	Probe, Calibration Date	DAE, Calibration Date
mmWave - xxxx	Air -	EUmmWV4 - SN9559_F1-55GHz, 2023-02-16	DAE4 Sn1468, 2023-08-24

Scans Setup

Scan Type	5G Scan
Grid Extents [mm]	60.0 x 60.0
Grid Steps [lambda]	0.125 x 0.125
Sensor Surface [mm]	10.0

Measurement Results

Scan Type	5G Scan
Avg. Area [cm ²]	4.00
psPDn+ [W/m ²]	61.9
psPDtot+ [W/m ²]	64.7
psPDmod+ [W/m ²]	65.3
E _{max} [V/m]	164
Power Drift [dB]	-0.08



LIQUIDS

Head Tissue Simulating Liquids

Application	Specific absorption rate according to standards (e.g., IEC 62209-x, IEEE 1528)		
Packaging	Plastic container of 10 liters with nozzle		
Life Time	Life time and stability of the liquid depend on usage, storage, and handling of tissue simulating liquid		
Options	Tissue simulating liquids for frequencies outside the below listed ranges are available upon request (please contact info@speag.swiss)		
Head Tissue	Parameters according to IEEE 1528 / IEC 62209-1/ IEC 62209-2 / FCC KDB 865664		
Narrow-Band Solutions (±5% Tolerance)	Product	Test Frequency (MHz)	Main Ingredients
	HSL300V2	300	Water, Sugar
	HSL450V2	450	Water, Sugar
	HSL750V2	750	Water, Sugar
	HSL900V2	835, 900	Water, Sugar
Broad-Band Solutions (±5% Tolerance)	Product	Test Frequency (MHz)	Main Ingredients
	HBBL1350-1850V3	1450 – 1800	Water, Tween
	HBBL1550-1950V3	1750 – 1850	Water, Tween
	HBBL1900-3800V3	1950 – 3000	Water, Tween
	HBBL3500-5800V5	3500 – 5800	Water, Oil
Broad-Band Solutions (±10% Tolerance)	Product	Test Frequency (MHz)	Main Ingredients
	HBBL4-250V3	4 – 250	Water, Tween
	HBBL1350-1850V3	1300 – 1850	Water, Tween
	HBBL1550-1950V3	1550 – 1950	Water, Tween
	HBBL1900-3800V3	1900 – 3800	Water, Tween
	HBBL600-10000V6	600 – 10000	Water, Oil

Zeughausstrasse 43, 8004 Zurich, Switzerland
 Phone +41 44 245 9700, Fax +41 44 245 9779
 info@speag.com, http://www.speag.com

Measurement Certificate / Material Test

Item Name	Head Tissue Simulating Liquid (HBBL600-1000V6)
Product No.	SL AAH U16 BC (Batch: 181106-1)
Manufacturer	SPEAG

Measurement Method

TSL dielectric parameters measured using calibrated DAK probe.

Target Parameters

Target parameters as defined in the IEEE 1528 and IEC 62209 compliance standards.

Test Condition

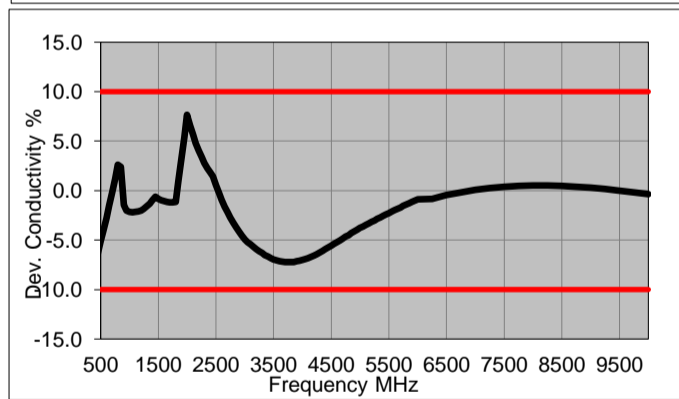
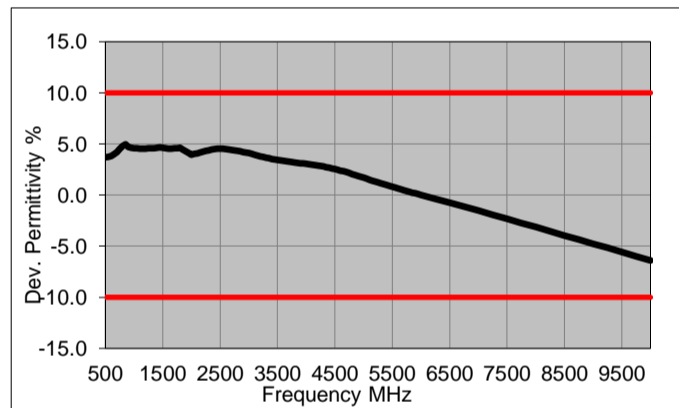
Ambient Condition 22°C ; 30% humidity
 TSL Temperature 22°C
 Test Date 7-Nov-18
 Operator CL

Additional Information

TSL Density
 TSL Heat-capacity

Results

f [MHz]	Measured			Target		Diff.to Target [%]	
	e'	e"	sigma	eps	sigma	D-eps	D-sigma
800	43.7	20.7	0.92	41.7	0.90	4.8	2.5
825	43.7	20.3	0.93	41.6	0.91	5.1	2.6
835	43.7	20.1	0.94	41.5	0.91	5.2	3.1
850	43.6	19.8	0.94	41.5	0.92	5.1	2.6
900	43.5	19.1	0.96	41.5	0.97	4.8	-1.0
1400	42.5	15.0	1.17	40.6	1.18	4.7	-0.8
1450	42.4	14.8	1.19	40.5	1.20	4.7	-0.8
1600	42.1	14.3	1.27	40.3	1.28	4.4	-1.1
1625	42.1	14.2	1.29	40.3	1.30	4.5	-0.7
1640	42.1	14.2	1.30	40.3	1.31	4.6	-0.5
1650	42.1	14.1	1.30	40.2	1.31	4.6	-1.0
1700	42.0	14.0	1.33	40.2	1.34	4.6	-0.9
1750	41.9	13.9	1.35	40.1	1.37	4.5	-1.5
1800	41.8	13.8	1.38	40.0	1.40	4.5	-1.4
1810	41.8	13.8	1.39	40.0	1.40	4.5	-0.7
1825	41.8	13.8	1.40	40.0	1.40	4.5	0.0
1850	41.8	13.7	1.41	40.0	1.40	4.5	0.7
1900	41.7	13.7	1.44	40.0	1.40	4.3	2.9
1950	41.6	13.6	1.48	40.0	1.40	4.0	5.7
2000	41.6	13.6	1.51	40.0	1.40	4.0	7.9
2050	41.5	13.5	1.54	39.9	1.44	4.0	6.6
2100	41.5	13.5	1.57	39.8	1.49	4.2	5.4
2150	41.4	13.4	1.61	39.7	1.53	4.2	5.0
2200	41.3	13.4	1.64	39.6	1.58	4.2	3.9
2250	41.3	13.4	1.68	39.6	1.62	4.4	3.6
2300	41.2	13.4	1.71	39.5	1.67	4.4	2.6
2350	41.1	13.4	1.75	39.4	1.71	4.4	2.3
2400	41.1	13.4	1.79	39.3	1.76	4.6	2.0
2450	41.0	13.4	1.83	39.2	1.80	4.6	1.7
2500	40.9	13.4	1.86	39.1	1.85	4.5	0.3
2550	40.8	13.4	1.90	39.1	1.91	4.4	-0.5
2600	40.8	13.5	1.95	39.0	1.96	4.6	-0.7
3500	39.2	13.9	2.71	37.9	2.91	3.4	-6.9
3700	38.9	14.1	2.89	37.7	3.12	3.3	-7.2



5200	36.5	15.6	4.51	36.0	4.66	1.3	-3.2
5250	36.4	15.6	4.56	35.9	4.71	1.2	-3.0
5300	36.3	15.7	4.62	35.9	4.76	1.1	-2.9
5500	35.9	15.9	4.85	35.6	4.96	0.8	-2.3
5600	35.8	15.9	4.96	35.5	5.07	0.6	-2.0
5700	35.6	16.0	5.08	35.4	5.17	0.5	-1.7
5800	35.4	16.1	5.20	35.3	5.27	0.3	-1.4
6000	35.1	16.3	5.43	35.1	5.48	0.0	-0.9
6500	34.2	16.7	6.04	34.5	6.07	-0.7	-0.5
7000	33.4	17.1	6.66	33.9	6.65	-1.5	0.1
7500	32.5	17.4	7.27	33.3	7.24	-2.3	0.4
8000	31.7	17.7	7.88	32.7	7.84	-3.1	0.5
8500	30.9	18.0	8.49	32.1	8.45	-4.0	0.5
9000	30.0	18.2	9.10	31.5	9.08	-4.8	0.3
9500	29.2	18.4	9.71	31.0	9.71	-5.6	0.0
10000	28.4	18.5	10.32	30.4	10.36	-6.4	-0.4