

## APPENDIX A: VERIFICATION PLOTS

# ELEMENT

Date: 10/31/2022

30 GHz System Verification

## Device Under Test Properties

DUT	Serial Number
30 GHz Verification Source	1045

## Exposure Conditions

Phantom Section	Position	Test Distance [mm]	Band	Frequency [MHz]
5G	FRONT	5.55	Validation band	30000.0

## Hardware Setup

Probe, Calibration Date	DAE, Calibration Date
EUmmWV3 - SN9421_F1-55GHz, 2022-03-15	DAE4 Sn1530, 2022-01-12

## Software Setup

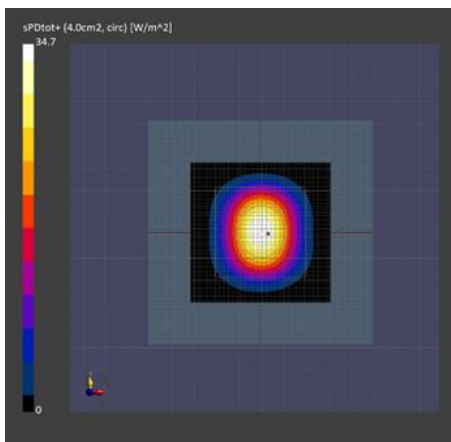
Software	Software Version
cDasy6 Module mmWave	3.0.0.841

## Scans Setup

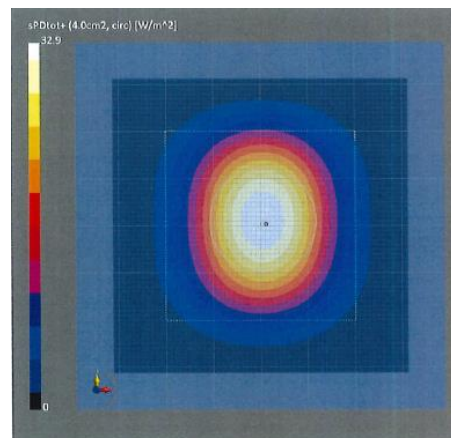
Scan Type	5G Scan
Grid Extents [mm]	60.0 x 60.0
Grid Steps [lambda]	0.25 x 0.25
Sensor Surface [mm]	5.55

## Measurement Results

Scan Type	5G Scan
Avg. Area [cm <sup>2</sup> ]	4.00
pS <sub>tot</sub> avg [W/m <sup>2</sup> ]	34.7
pS <sub>n</sub> avg [W/m <sup>2</sup> ]	34.2
E <sub>peak</sub> [V/m]	135
Power Drift [dB]	0.04



30GHz System Verification



Calibration Certificate