

APPENDIX A: POWER DENSITY TEST PLOTS

Element

Date: 09/20/2022

Antenna M Beam 153; H; High Ch.; CW

Device Under Test Properties

DUT	Serial Number	DUT Type
A3LSMS918U	VHT0152M	Portable Handset

Exposure Conditions

Phantom Section	Position	Test Distance [mm]	Band	Frequency [MHz]
5G	BACK	2.00	n258	25200.00

Hardware Setup

Probe, Calibration Date	DAE, Calibration Date
EUmWV4 - SN9541, 05/19/2022	DAE4ip SN1638, 11/11/2021

Software Setup

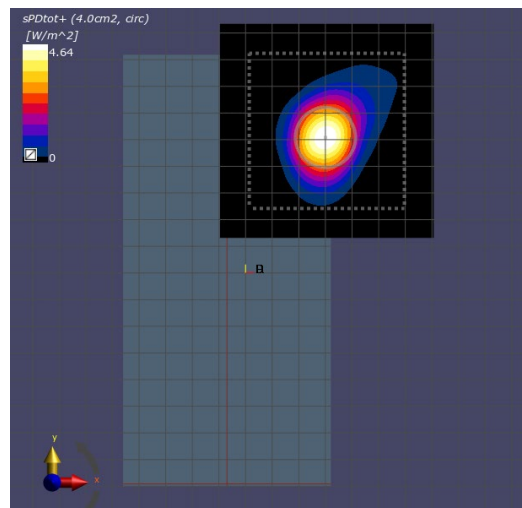
Software	Software Version
cDASY6 Module mmWave	3.0.0.841

Scans Setup

Scan Type	5G Scan
Grid Extents [mm]	80x80
Grid Steps [lambda]	0.25 x 0.25
Sensor Surface [mm]	2.0

Measurement Results

Scan Type	5G Scan
Avg. Area [cm ²]	4.00
pS _{tot} avg [W/m ²]	4.64
pS _n avg [W/m ²]	3.77
E _{peak} [V/m]	69.6
Power Drift [dB]	-0.03



Element

Date: 09/20/2022

Antenna N Beam 169; H; Low Ch.; CW

Device Under Test Properties

DUT	Serial Number	DUT Type
A3LSMS918U	VHT0167M	Portable Handset

Exposure Conditions

Phantom Section	Position	Test Distance [mm]	Band	Frequency [MHz]
5G	BACK	2.00	n258	24350.00

Hardware Setup

Probe, Calibration Date	DAE, Calibration Date
EUmmWV3 - SN9407, 12/13/2021	DAE4ip SN1639, 01/21/2022

Software Setup

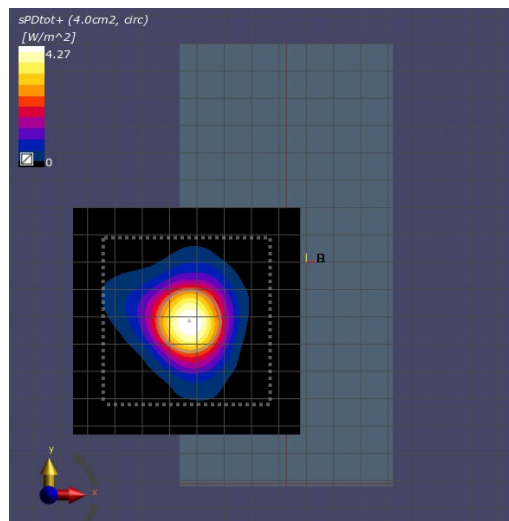
Software	Software Version
cDASY6 Module mmWave	3.0.0.841

Scans Setup

Scan Type	5G Scan
Grid Extents [mm]	80x80
Grid Steps [lambda]	0.25 x 0.25
Sensor Surface [mm]	2.0

Measurement Results

Scan Type	5G Scan
Avg. Area [cm ²]	4.00
pS _{tot} avg [W/m ²]	4.27
pS _n avg [W/m ²]	3.66
E _{peak} [V/m]	56.7
Power Drift [dB]	-0.19



Element

Date: 09/20/2022

Antenna M Beam 165; H; Low Ch.; CW

Device Under Test Properties

DUT	Serial Number	DUT Type
A3LSMS918U	VHT0152M	Portable Handset

Exposure Conditions

Phantom Section	Position	Test Distance [mm]	Band	Frequency [MHz]
5G	BACK	2.00	n261	27550.10

Hardware Setup

Probe, Calibration Date	DAE, Calibration Date
EUmmWV4 - SN9541, 05/19/2022	DAE4ip SN1638, 11/11/2021

Software Setup

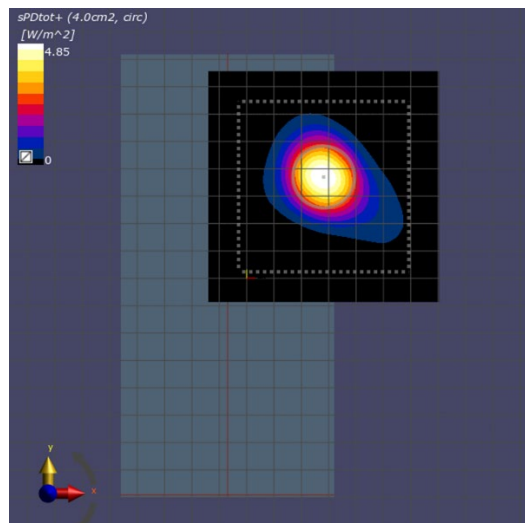
Software	Software Version
cDASY6 Module mmWave	3.0.0.841

Scans Setup

Scan Type	5G Scan
Grid Extents [mm]	80x80
Grid Steps [lambda]	0.25 x 0.25
Sensor Surface [mm]	2.0

Measurement Results

Scan Type	5G Scan
Avg. Area [cm ²]	4.00
pS _{tot} avg [W/m ²]	4.85
pS _n avg [W/m ²]	3.36
E _{peak} [V/m]	72.8
Power Drift [dB]	-0.01



Element

Date: 10/13/2022

Antenna N Beam 158; H; High Ch.; CW

Device Under Test Properties

DUT	Serial Number	DUT Type
A3LSMS918U	VHT0152M	Portable Handset

Exposure Conditions

Phantom Section	Position	Test Distance [mm]	Band	Frequency [MHz]
5G	RIGHT	2.00	n261	28300.00

Hardware Setup

Probe, Calibration Date	DAE, Calibration Date
EUmWV4 - SN9541, 05/19/2022	DAE4ip SN1639, 01/21/2022

Software Setup

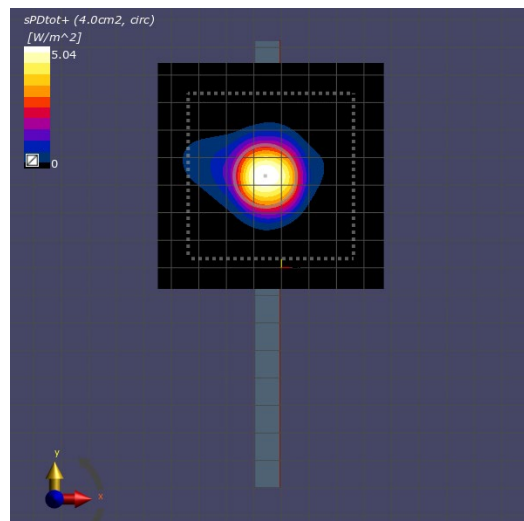
Software	Software Version
cDASY6 Module mmWave	3.0.0.841

Scans Setup

Scan Type	5G Scan
Grid Extents [mm]	80x80
Grid Steps [lambda]	0.25 x 0.25
Sensor Surface [mm]	2.0

Measurement Results

Scan Type	5G Scan
Avg. Area [cm ²]	4.00
pS _{tot} avg [W/m ²]	5.04
pS _n avg [W/m ²]	4.29
E _{peak} [V/m]	86.0
Power Drift [dB]	-0.15



Element

Date: 09/20/2022

Antenna M Beam 154; H; Mid Ch.; CW

Device Under Test Properties

DUT	Serial Number	DUT Type
A3LSMS918U	VHT0152M	Portable Handset

Exposure Conditions

Phantom Section	Position	Test Distance [mm]	Band	Frequency [MHz]
5G	BACK	2.00	n260	38500.00

Hardware Setup

Probe, Calibration Date	DAE, Calibration Date
EUmmWV4 - SN9541, 05/19/2022	DAE4ip SN1638, 11/11/2021

Software Setup

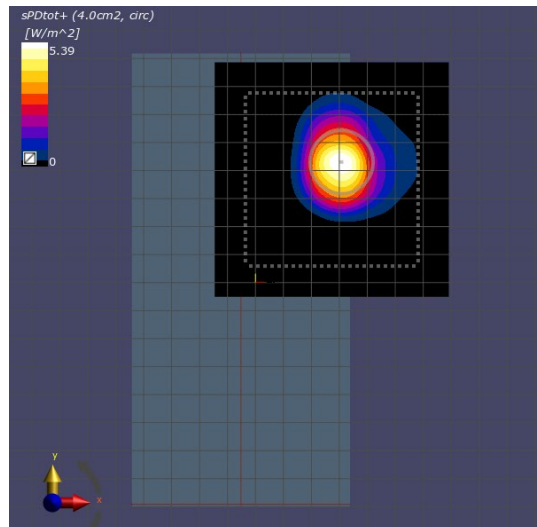
Software	Software Version
cDASY6 Module mmWave	3.0.0.841

Scans Setup

Scan Type	5G Scan
Grid Extents [mm]	80x80
Grid Steps [lambda]	0.25 x 0.25
Sensor Surface [mm]	2.0

Measurement Results

Scan Type	5G Scan
Avg. Area [cm ²]	4.00
pS _{tot} avg [W/m ²]	5.40
pS _n avg [W/m ²]	4.57
E _{peak} [V/m]	81.6
Power Drift [dB]	0.06



Element

Date: 09/20/2022

Antenna N Beam 41; V; Low Ch.; CW

Device Under Test Properties

DUT	Serial Number	DUT Type
A3LSMS918U	VHT0167M	Portable Handset

Exposure Conditions

Phantom Section	Position	Test Distance [mm]	Band	Frequency [MHz]
5G	RIGHT	2.00	n260	37050.00

Hardware Setup

Probe, Calibration Date	DAE, Calibration Date
EUmmWV3 - SN9407, 12/13/2021	DAE4ip SN1639, 01/21/2022

Software Setup

Software	Software Version
cDASY6 Module mmWave	3.0.0.841

Scans Setup

Scan Type	5G Scan
Grid Extents [mm]	80x80
Grid Steps [lambda]	0.25 x 0.25
Sensor Surface [mm]	2.0

Measurement Results

Scan Type	5G Scan
Avg. Area [cm ²]	4.00
pS _{tot} avg [W/m ²]	4.06
pS _n avg [W/m ²]	3.38
E _{peak} [V/m]	80.3
Power Drift [dB]	0.20

