



# Internal Photo

**Applicant** : SAMSUNG ELECTRONICS CO., LTD.  
129 SAMSUNG-RO, YEONGTONG-GU, SUWON-SI,  
GYEONGGI-DO, 16677, KOREA

**Model** : SM-S918B/DS, SM-S918B

**FCC ID** : A3LSMS918B

**Date Of Issue:**

2022-10-27

**Prepared by:**

UL Korea, Ltd.

26th floor, 152, Teheran-ro, Gangnam-gu Seoul, 06236, Korea

Suwon Test Site: UL Korea, Ltd. Suwon Laboratory

218 Maeyeong-ro, Yeongtong-gu,  
Suwon-si, Gyeonggi-do, 16675, Korea

TEL: (031) 337-9902

FAX: (031) 213-5433



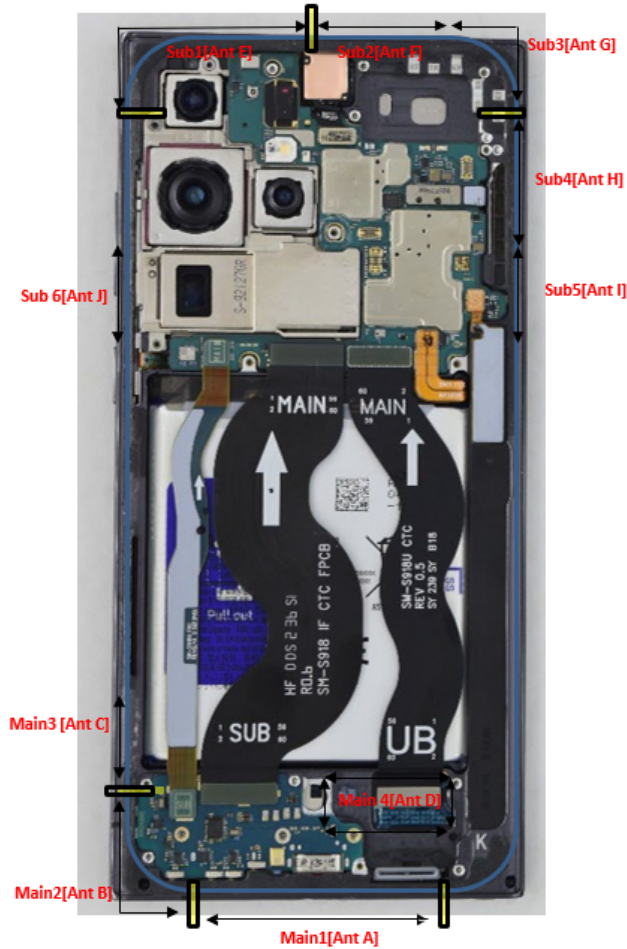
ACCREDITED

**Testing Laboratory**

**TL-637**

Internal Photo

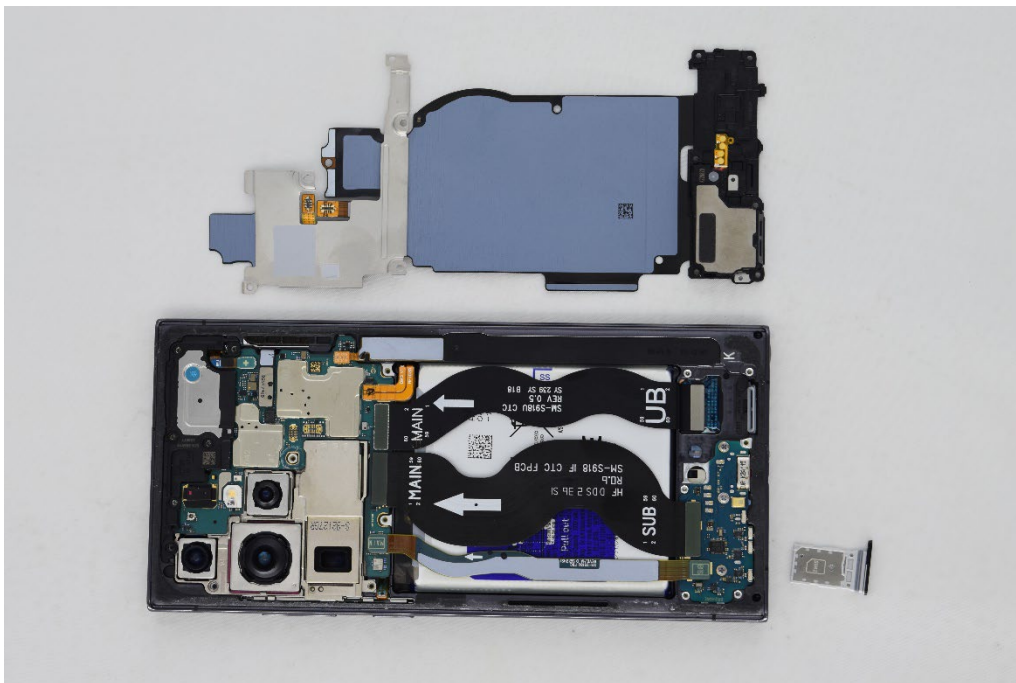
Tx Antenna Information

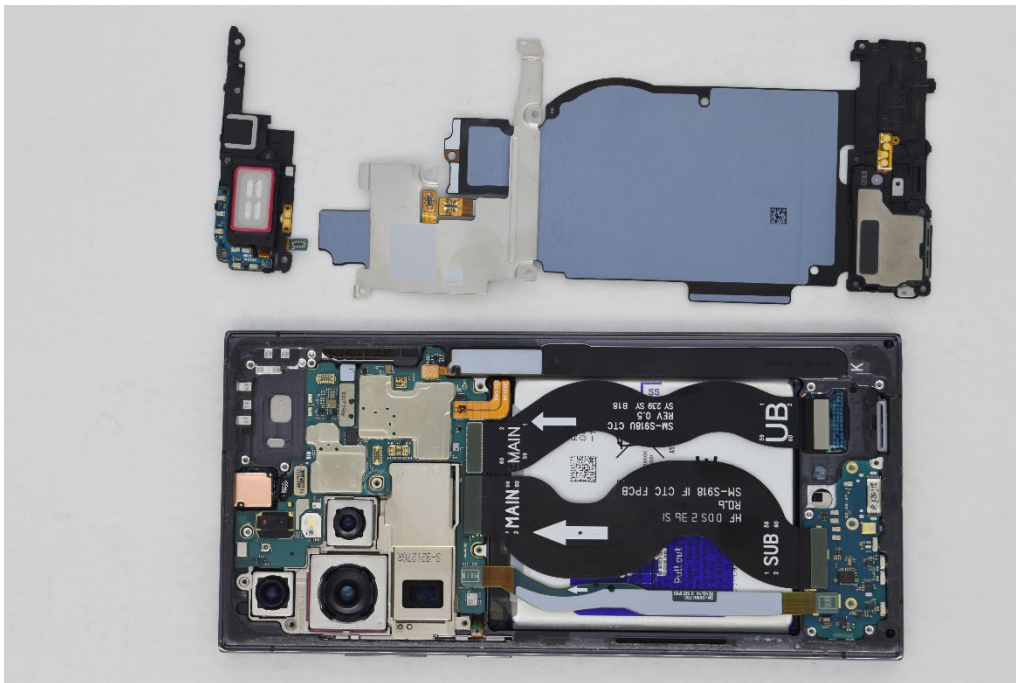
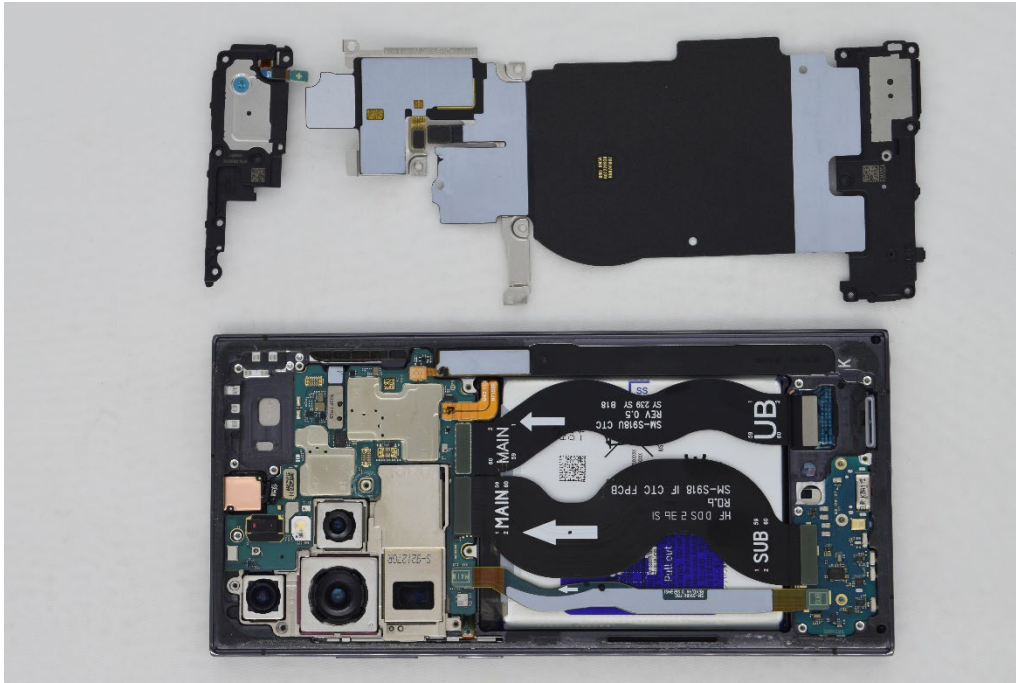


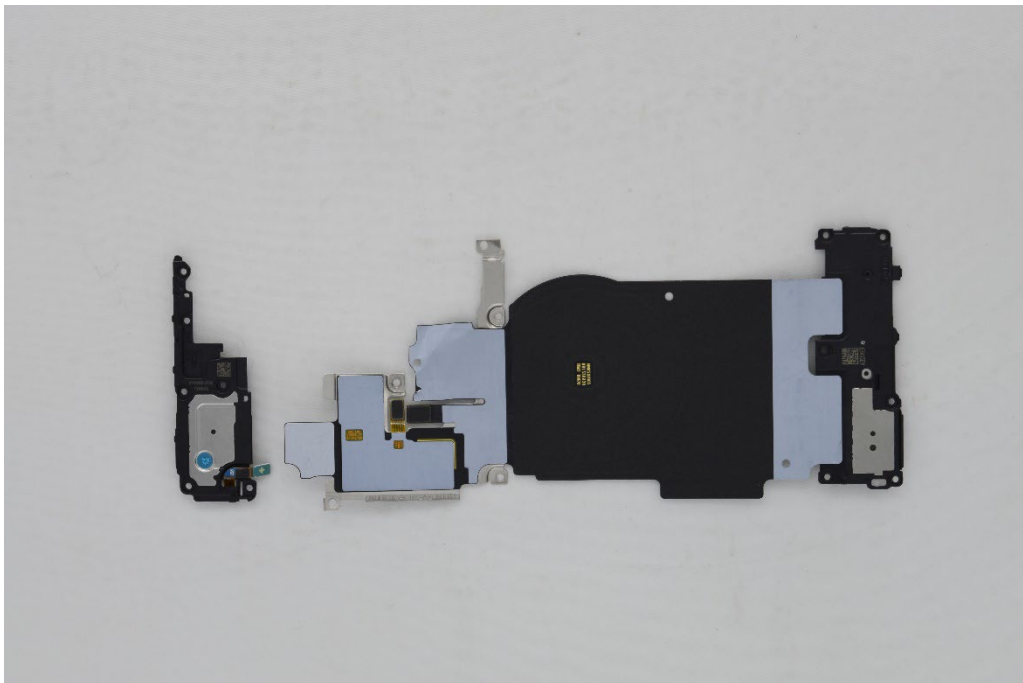
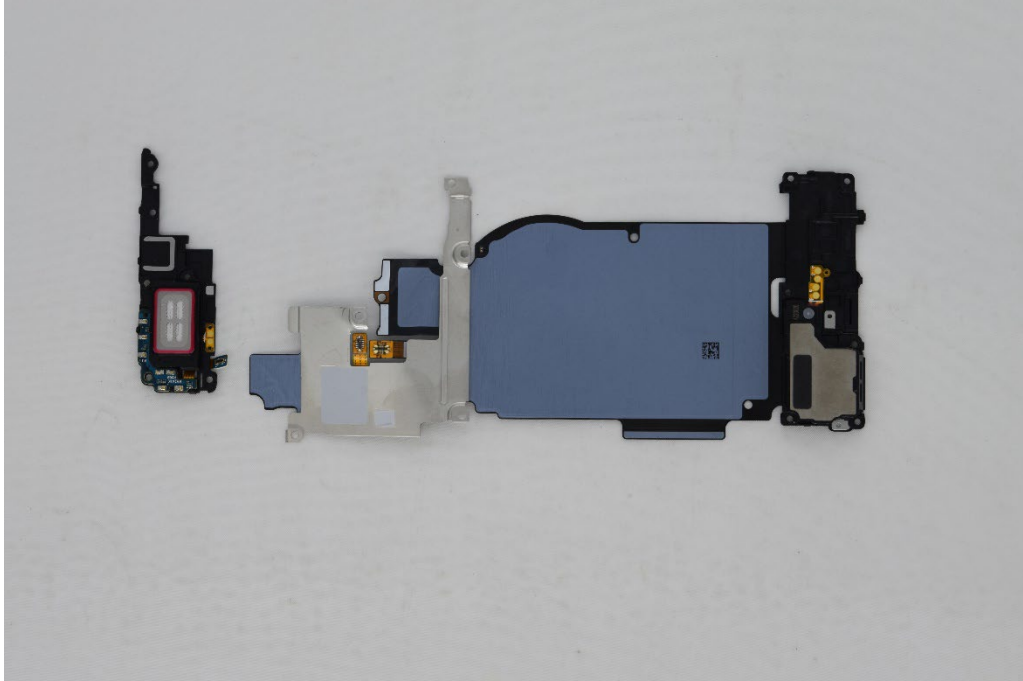
Ant	Support Band List
MAIN1 [Ant A]	TRX GSM850/1900 WCDMA 2/4/5 LTE B2/4/5/12/13/17/25/26/66 NR n2/5/25/66
MAIN2 [Ant B]	TRX LTE B38/41 DRX1 NR N38/41 SRS1(Tx)
MAIN3 [Ant C]	DRX1 NR N77 SRS1(Tx) PRX2 NR N66, LTE B4/66
MAIN4 [Ant D]	PRX2 LTE B38/41 DRX2 NR N38/41 SRS3(Tx)/77 SRS3(Tx)
SUB1 [Ant E]	DRX1 NR N5/12, LTE B5/12/13/17/26, WCDMA 5, GSM850 DRX2 LTE B38/41 PRX2 NR38/41 SRS2(Tx) WIFI2 5G/6G
SUB2 [Ant F]	TRX LTE B4(CA 2A-4A) TRX NR N66(ENDC LTE B2-NR N66) TRX NR N38/41 SRS0(Tx) DRX1 NR N2/25/66, LTE B2/4/25/38/41/66, WCDMA 2, GSM1900 GPS L1
SUB3 [Ant G]	TRX NR N77 SRS0(Tx) WIFI1 5G/6G
SUB4 [Ant H]	DRX2 NR N66, LTE B4/66 GPS L5 WIFI1 2.4G/BT
SUB5 [Ant I]	PRX2 NR N77 SRS2(Tx) UWB ANT1
SUB6 [Ant J]	WIFI2 2.4G/BT
Patch [Ant K]	UWB ANT2

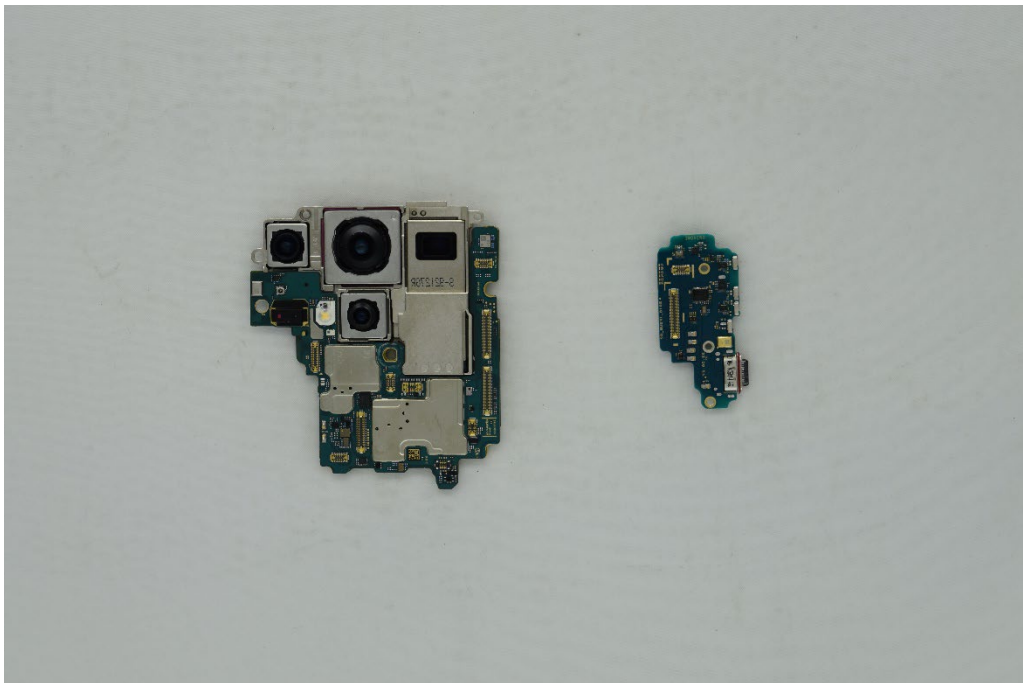
※ The metal itself acts as Antennas. Please refer to the mark for segments.

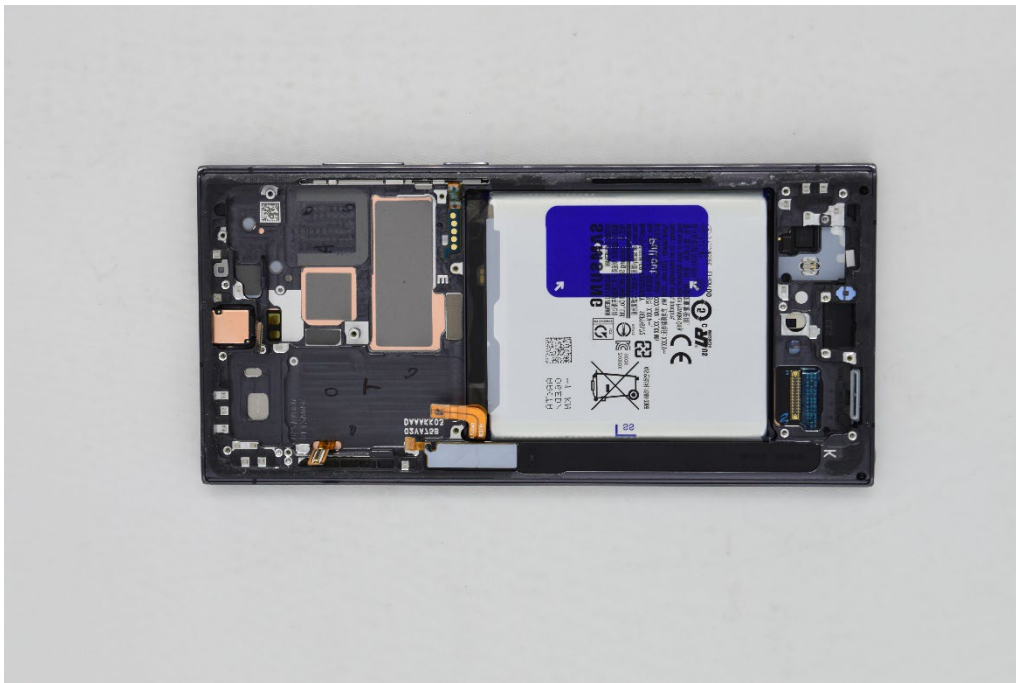
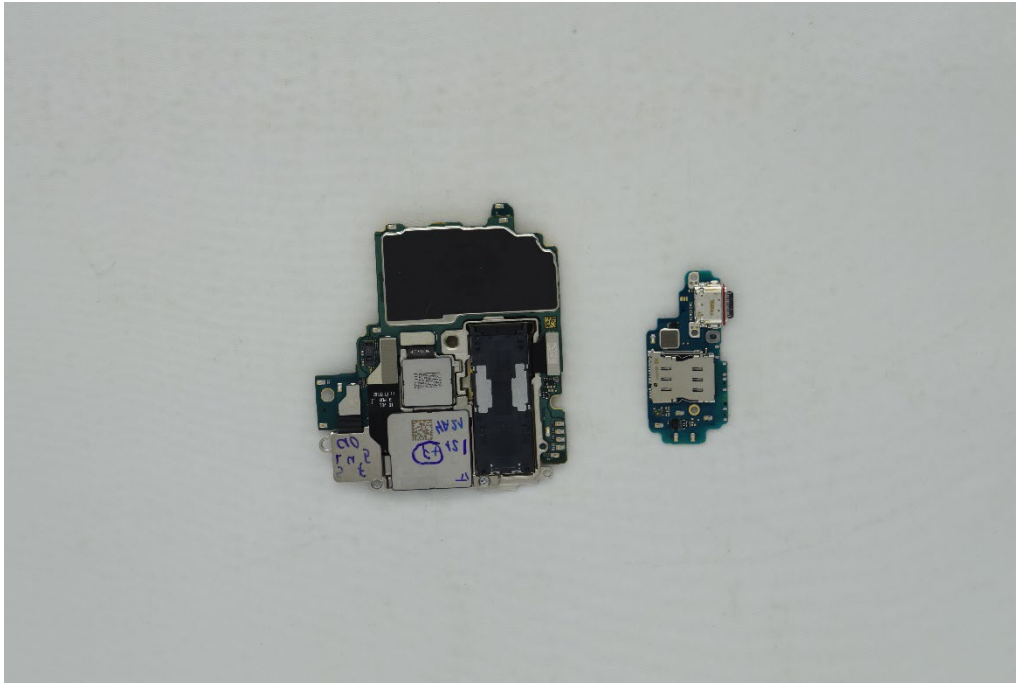
**Internal Photo**

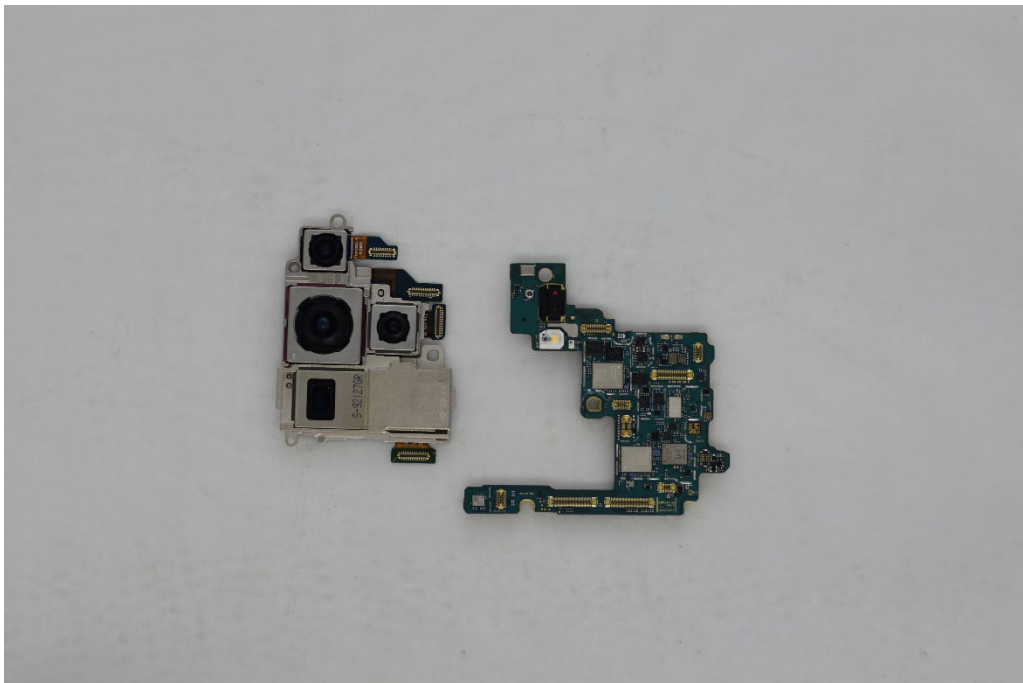




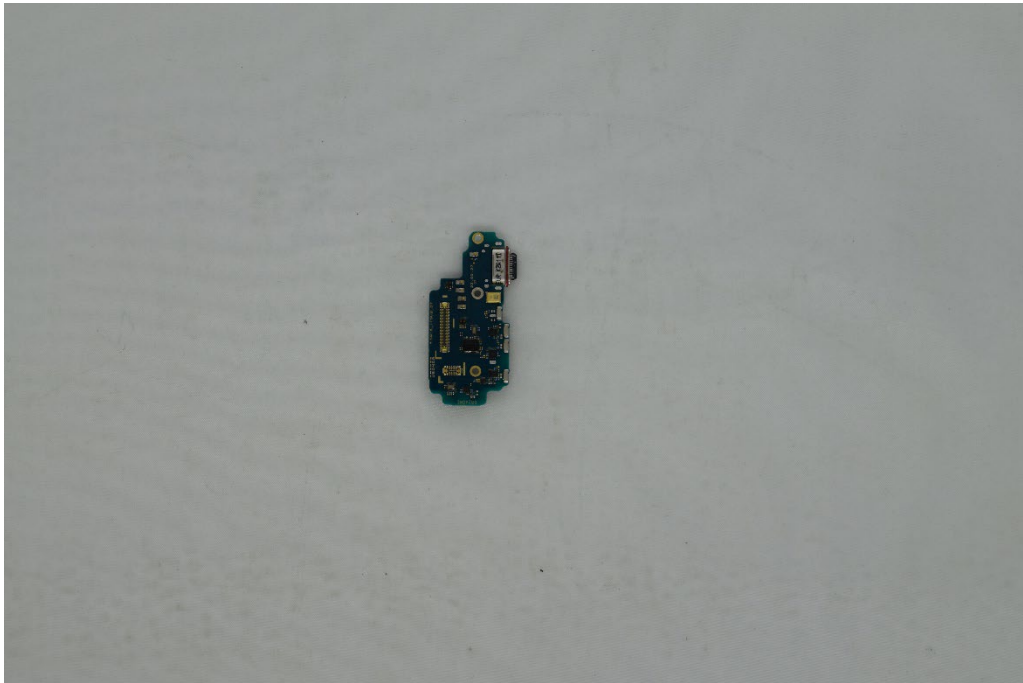


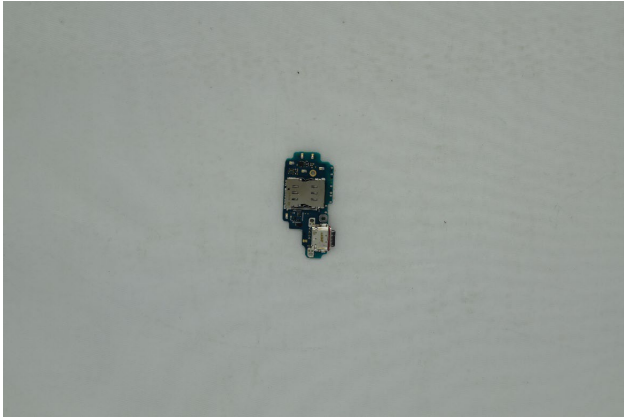




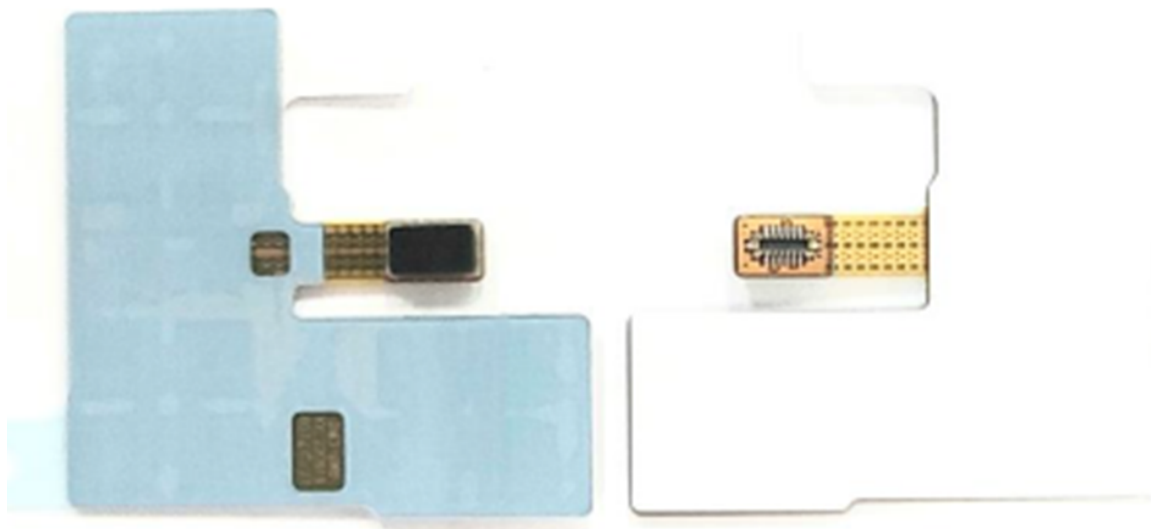








UWB Patch Ant



**The End**