



Internal Photo

Applicant : SAMSUNG ELECTRONICS CO., LTD.
129 SAMSUNG-RO, YEONGTONG-GU, SUWON-SI,
GYEONGGI-DO, 16677, KOREA

Model : SM-S916B/DS, SM-S916B

FCC ID : A3LSMS916B

Date Of Issue:

2022-10-26

Prepared by:

UL Korea, Ltd.

26th floor, 152, Teheran-ro, Gangnam-gu Seoul, 06236, Korea

Suwon Test Site: UL Korea, Ltd. Suwon Laboratory

218 Maeyeong-ro, Yeongtong-gu,

Suwon-si, Gyeonggi-do, 16675, Korea

TEL: (031) 337-9902

FAX: (031) 213-5433



ACCREDITED

Testing Laboratory

TL-637

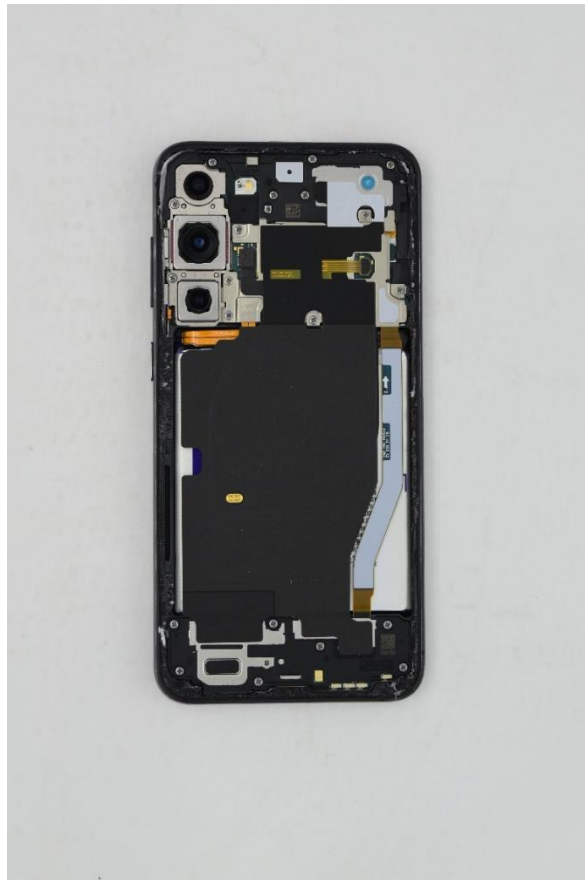
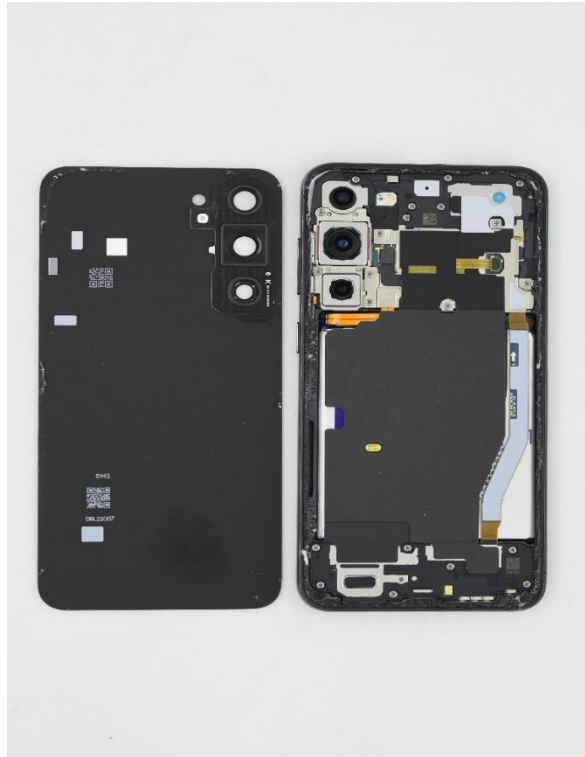
Internal Photo



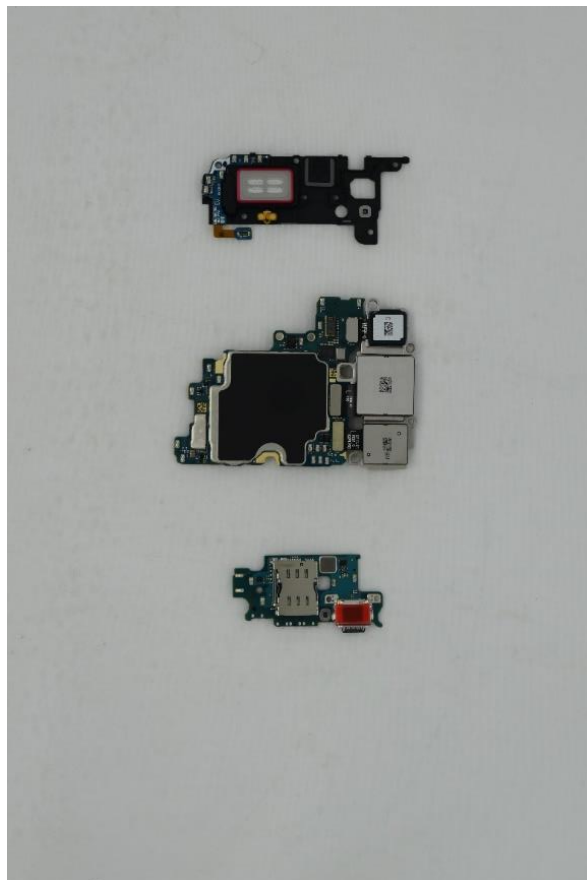
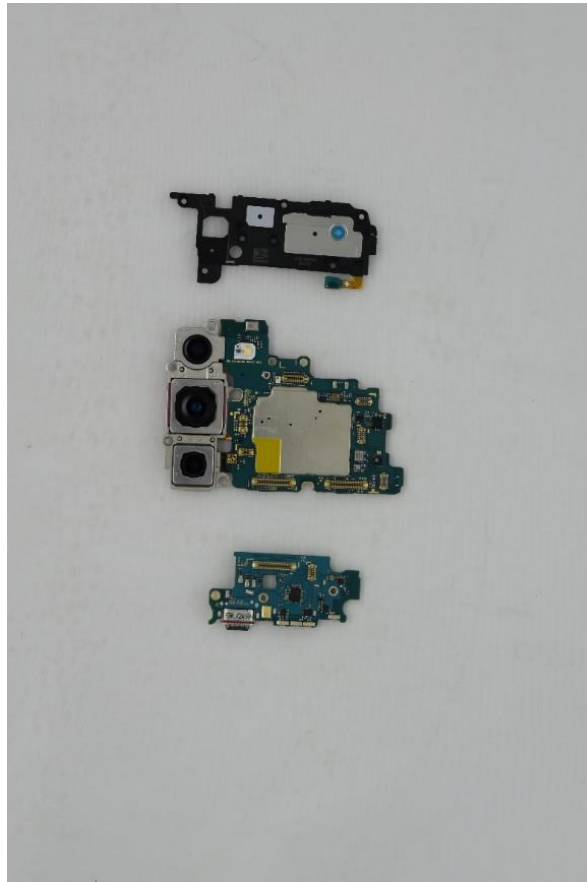
Ant	Support Band List
MAIN1 [Ant A]	TRX GSM850/1900 WCDMA 2/4/5 LTE B2/4/5/12/13/17/25/26/66 NR N2/5/25/66
MAIN2 [Ant B]	TRX LTE B38/41 DRX1 NR N38/41
MAIN3 [Ant C]	DRX1 NR N77 PRX2 NR N66, LTE B4/66
MAIN4 [Ant D]	PRX2 LTE B38/41 DRX2 NR N38/41/77
SUB1 [Ant E]	DRX1 NR N5/12, LTE B5/12/13/17/26, WCDMA 5, GSM850 DRX2 LTE B38/41 PRX2 NR38/41 WIFI2 5G/6G
SUB2 [Ant F]	TRX LTE B4(CA 2A-4A) TRX NR N66(ENDC LTE B2-NR N66) TRX NR38/41/77 DRX1 NR N2/25/66, LTE B2/4/25/38/41/66, WCDMA 2, GSM1900 GPS L1
SUB3 [Ant G]	
SUB4 [Ant H]	DRX2 NR N66, LTE B4/66 GPS L5 WIFI1 2.4G/5G/6G BT ANT1
SUB5 [Ant I]	PRX2 NR N77 UWB ANT1
SUB6 [Ant J]	WIFI2 2.4G BT Ant2
Patch [Ant K]	UWB ANT2

※ The Metal itself acts as Antennas. Please refer to the mark for each segment.

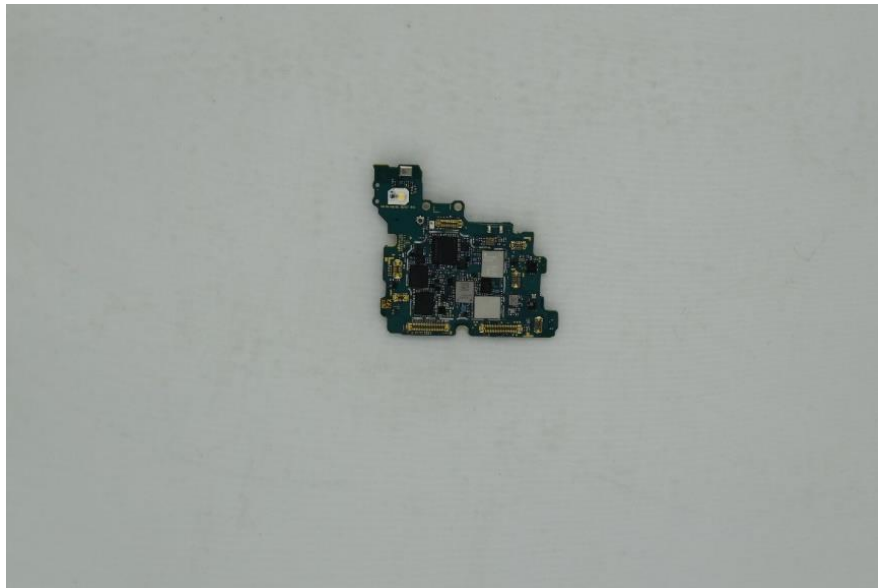
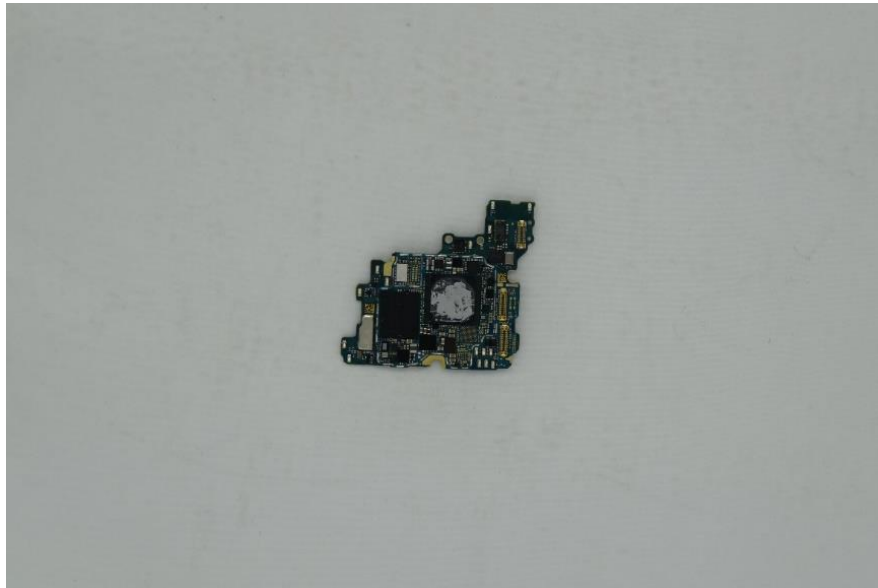
Internal Photo

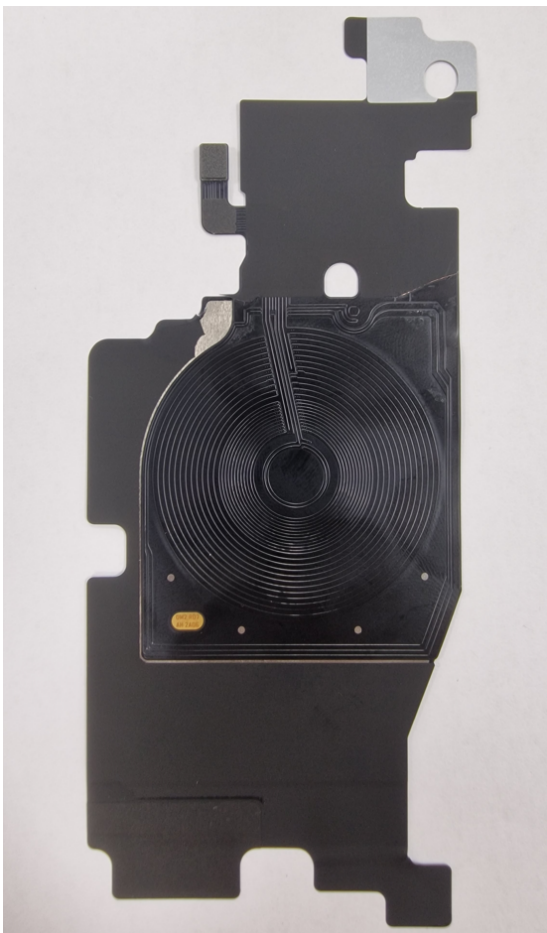












UWB Patch Ant

