

# Measurement Report for Device, , , UID 0 -, Channel 0 (8000.0MHz)

## Exposure Conditions

Phantom Section, TSL	Position, Test Distance [mm]	Band	Group, UID	Frequency [MHz], Channel Number	Conversion Factor	TSL Conductivity [S/m]	TSL Permittivity
Flat, HSL	,		, 0--	8000.0, 0	5.0	7.83	32.1

## Hardware Setup

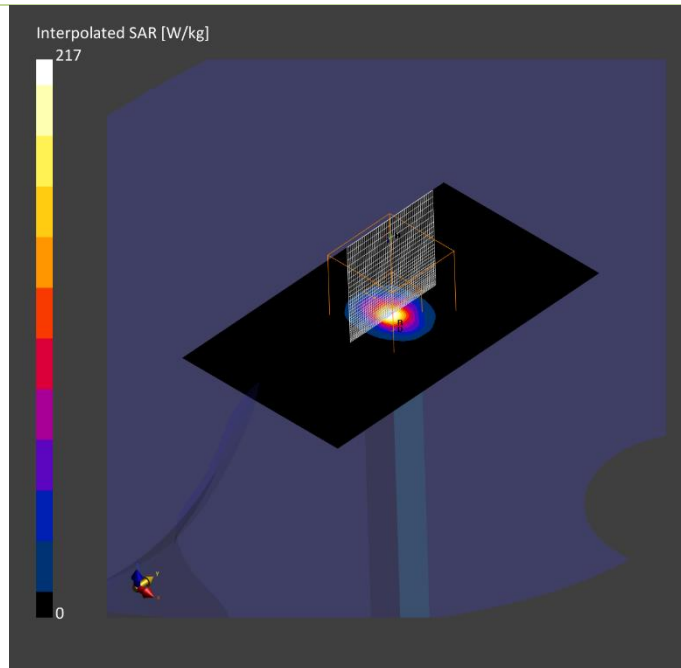
Phantom	TSL, Measured Date	Probe, Calibration Date	DAE, Calibration Date
Twin-SAM V8.0 (30deg probe tilt) - 2039	HBBL-600-10000 Charge:xxxx, 2022-Oct-11	EX3DV4 - SN7376, 2022-07-27	DAE4 Sn1591, 2022-03-24

## Scan Setup

	Area Scan	Zoom Scan
Grid Extents [mm]	52.0 x 91.0	28.0 x 28.0 x 24.0
Grid Steps [mm]	6.5 x 6.5	2.7 x 2.7 x 1.3
Sensor Surface [mm]	3.0	1.4
Graded Grid	Yes	Yes

## Measurement Results

	Area Scan	Zoom Scan
Date	2022-10-11, 18:41	2022-10-11, 18:58
psSAR1g [W/kg]	30.3	27.1
psSAR10g [W/kg]	5.76	4.79
Power Drift [dB]	0.09	-0.09



# Measurement Report for Device, , UID 0 -, Channel 0 (6500.0MHz)

## Exposure Conditions

Phantom Section, TSL	Position, Test Distance [mm]	Band	Group, UID	Frequency [MHz], Channel Number	Conversion Factor	TSL Conductivity [S/m]	TSL Permittivity
Flat, HSL	,		, 0--	6500.0, 0	5.35	5.92	33.4

## Hardware Setup

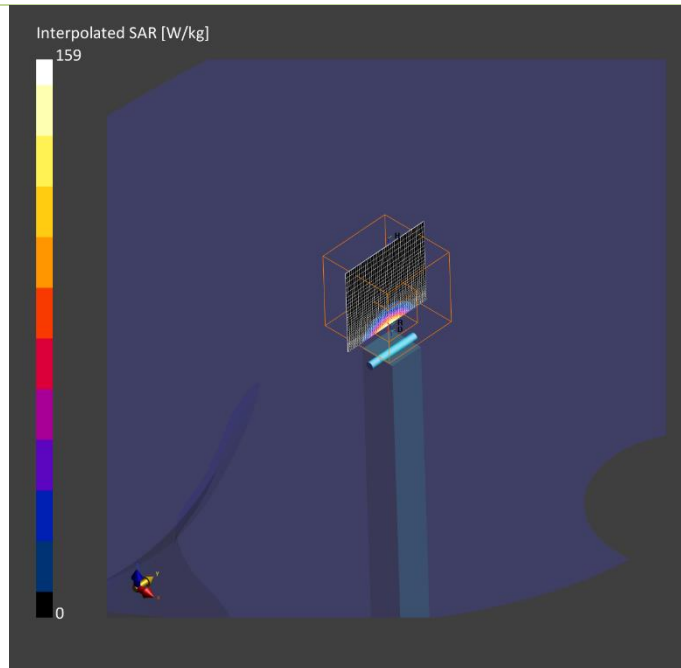
Phantom	TSL, Measured Date	Probe, Calibration Date	DAE, Calibration Date
Twin-SAM V8.0 (30deg probe tilt) - 2039	HBBL-600-10000 Charge:xxxx, 2022-Oct-21	EX3DV4 - SN7545, 2022-08-19	DAE4 Sn1591, 2022-03-24

## Scan Setup

	Area Scan	Zoom Scan
Grid Extents [mm]	51.0 x 85.0	22.0 x 22.0 x 22.0
Grid Steps [mm]	8.5 x 8.5	3.4 x 3.4 x 1.4
Sensor Surface [mm]	3.0	1.4
Graded Grid	Yes	Yes

## Measurement Results

	Area Scan	Zoom Scan
Date	2022-10-21, 16:33	2022-10-21, 16:41
psSAR1g [W/kg]	24.3	26.7
psSAR10g [W/kg]	4.76	5.16
Power Drift [dB]	0.05	-0.04



# Measurement Report for Device, FRONT, Validation band, UID 0 -, Channel 10000 (10000.0MHz)

## Exposure Conditions

Phantom Section	Position, Test Distance [mm]	Band	Group, UID	Frequency [MHz], Channel Number	Conversion Factor
5G Air	FRONT, 10.00	Validation band	CW, 0--	10000.0, 10000	1.0

## Hardware Setup

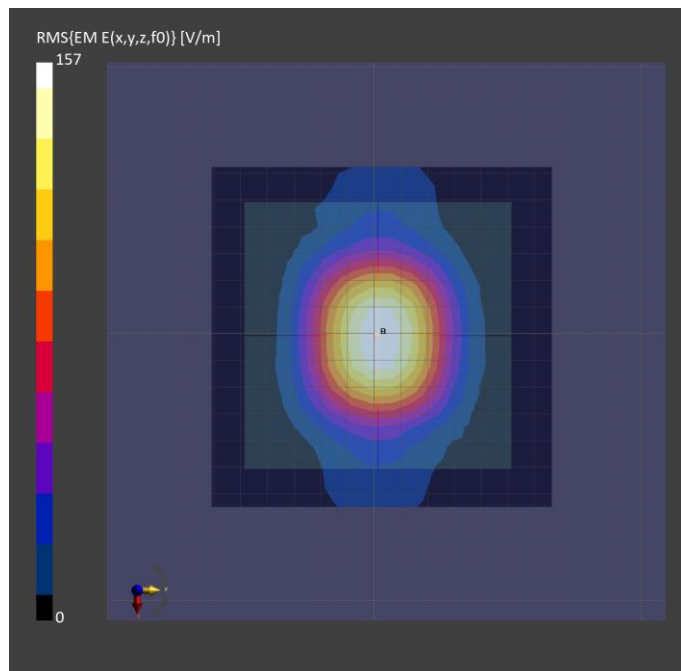
Phantom	Medium	Probe, Calibration Date	DAE, Calibration Date
mmWave- 1082	---Air	EUmmWV4 - SN9536_F1-55GHz, 2022-02-28	DAE4 Sn1670, 2022-06-07

## Scan Setup

	5G Scan
Grid Extents [mm]	120.0 x 120.0
Grid Steps [lambda]	0.25 x 0.25
Sensor Surface [mm]	10.0
MAIA	N/A

## Measurement Results

	5G Scan
Date	2022-10-06, 21:07
Avg. Area [cm <sup>2</sup> ]	4.00
psPDn+ [W/m <sup>2</sup> ]	58.6
psPDtot+ [W/m <sup>2</sup> ]	59.6
psPDmod+ [W/m <sup>2</sup> ]	59.9
E <sub>max</sub> [V/m]	154
Power Drift [dB]	0.00



# Measurement Report for Device, FRONT, Validation band, UID 0 -, Channel 10000 (10000.0MHz)

## Exposure Conditions

Phantom Section	Position, Test Distance [mm]	Band	Group, UID	Frequency [MHz], Channel Number	Conversion Factor
5G Air	FRONT, 10.00	Validation band	CW, 0--	10000.0, 10000	1.0

## Hardware Setup

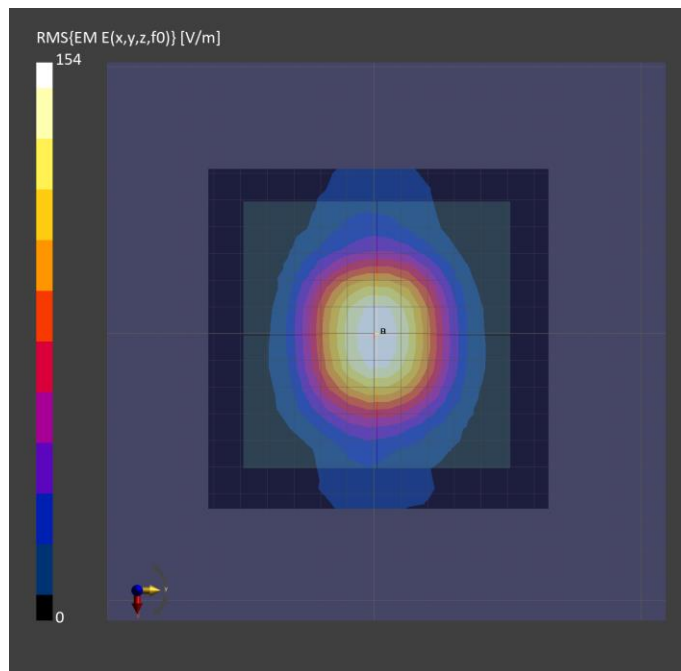
Phantom	Medium	Probe, Calibration Date	DAE, Calibration Date
mmWave- 1082	---Air	EUmmWV4 - SN9536_F1-55GHz, 2022-02-28	DAE4 Sn1670, 2022-06-07

## Scan Setup

	5G Scan
Grid Extents [mm]	120.0 x 120.0
Grid Steps [lambda]	0.25 x 0.25
Sensor Surface [mm]	10.0
MAIA	N/A

## Measurement Results

	5G Scan
Date	2022-10-12, 15:04
Avg. Area [cm <sup>2</sup> ]	4.00
psPDn+ [W/m <sup>2</sup> ]	53.8
psPDtot+ [W/m <sup>2</sup> ]	55.2
psPDmod+ [W/m <sup>2</sup> ]	55.6
E <sub>max</sub> [V/m]	150
Power Drift [dB]	-0.03



# Measurement Report for Device, FRONT, Validation band, UID 0 -, Channel 10000 (10000.0MHz)

## Exposure Conditions

Phantom Section	Position, Test Distance [mm]	Band	Group, UID	Frequency [MHz], Channel Number	Conversion Factor
5G Air	FRONT, 10.00	Validation band	CW, 0--	10000.0, 10000	1.0

## Hardware Setup

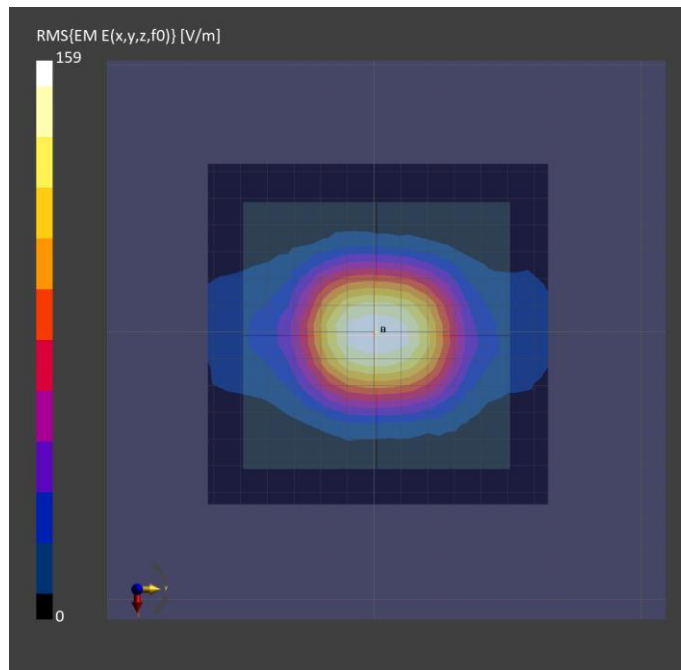
Phantom	Medium	Probe, Calibration Date	DAE, Calibration Date
mmWave- xxxx	---Air	EUmmWV4 - SN9493_F1-55GHz, 2022-01-27	DAE4 Sn1447, 2022-03-25

## Scan Setup

	5G Scan
Grid Extents [mm]	120.0 x 120.0
Grid Steps [lambda]	0.25 x 0.25
Sensor Surface [mm]	10.0
MAIA	N/A

## Measurement Results

	5G Scan
Date	2022-10-08, 00:21
Avg. Area [cm <sup>2</sup> ]	4.00
psPDn+ [W/m <sup>2</sup> ]	57.7
psPDtot+ [W/m <sup>2</sup> ]	57.9
psPDmod+ [W/m <sup>2</sup> ]	58.2
E <sub>max</sub> [V/m]	155
Power Drift [dB]	0.01



# Measurement Report for Device, FRONT, Validation band, UID 0 -, Channel 10000 (10000.0MHz)

## Exposure Conditions

Phantom Section	Position, Test Distance [mm]	Band	Group, UID	Frequency [MHz], Channel Number	Conversion Factor
5G Air	FRONT, 10.00	Validation band	CW, 0--	10000.0, 10000	1.0

## Hardware Setup

Phantom	Medium	Probe, Calibration Date	DAE, Calibration Date
mmWave- xxxx	---Air	EUmmWV4 - SN9493_F1-55GHz, 2022-01-27	DAE4 Sn1447, 2022-03-25

## Scan Setup

	5G Scan
Grid Extents [mm]	120.0 x 120.0
Grid Steps [lambda]	0.25 x 0.25
Sensor Surface [mm]	10.0
MAIA	N/A

## Measurement Results

	5G Scan
Date	2022-10-22, 16:51
Avg. Area [cm <sup>2</sup> ]	4.00
psPDn+ [W/m <sup>2</sup> ]	54.1
psPDtot+ [W/m <sup>2</sup> ]	54.3
psPDmod+ [W/m <sup>2</sup> ]	54.6
E <sub>max</sub> [V/m]	150
Power Drift [dB]	-0.02

