

Measurement Report for Device, Right Touch, U-NII-5, UID 10755 AAC, Channel 47 (6185.0MHz)

Exposure Conditions

Phantom Section, TSL	Position, Test Distance [mm]	Band	Group, UID	Frequency [MHz], Channel Number	Conversion Factor	TSL Conductivity [S/m]	TSL Permittivity
Right Head, HSL	Right Touch, 0.00	U-NII-5	WLAN, 10755-AAC	6185.0, 47	5.2	5.79	35.4

Hardware Setup

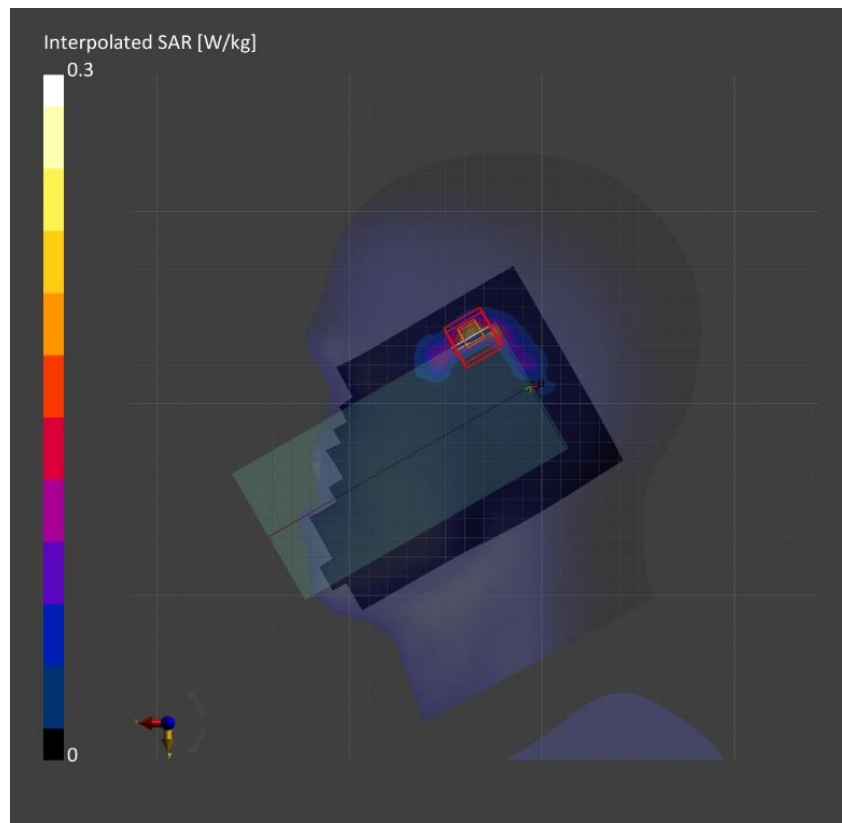
Phantom	TSL, Measured Date	Probe, Calibration Date	DAE, Calibration Date
Twin-SAM V8.0 (30deg probe tilt) - 2039	HBBL-600-10000, 2022-Oct-16	EX3DV4 - SN7376, 2022-07-27	DAE4 Sn1591, 2022-03-24

Scan Setup

	Area Scan	Zoom Scan
Grid Extents [mm]	119.0 x 204.0	22.0 x 22.0 x 22.0
Grid Steps [mm]	8.5 x 8.5	3.4 x 3.4 x 1.4
Sensor Surface [mm]	3.0	1.4

Measurement Results

	Area Scan	Zoom Scan
Date	2022-10-16	2022-10-16
psSAR1g [W/kg]	0.144	0.187
psSAR10g [W/kg]	0.045	0.054
psPDab (1.0cm ² , sq) [W/m ²]		1.87
psPDab (4.0cm ² , sq) [W/m ²]		1.18
Power Drift [dB]	0.17	0.07



Measurement Report for Device, Rear, U-NII-7, UID 10707 AAC, Channel 147 (6685.0MHz)

Exposure Conditions

Phantom Section, TSL	Position, Test Distance [mm]	Band	Group, UID	Frequency [MHz], Channel Number	Conversion Factor	TSL Conductivity [S/m]	TSL Permittivity
Flat, HSL	Rear, 15.00	U-NII-7	WLAN, 10707-AAC	6685.0, 147	5.35	6.15	33.1

Hardware Setup

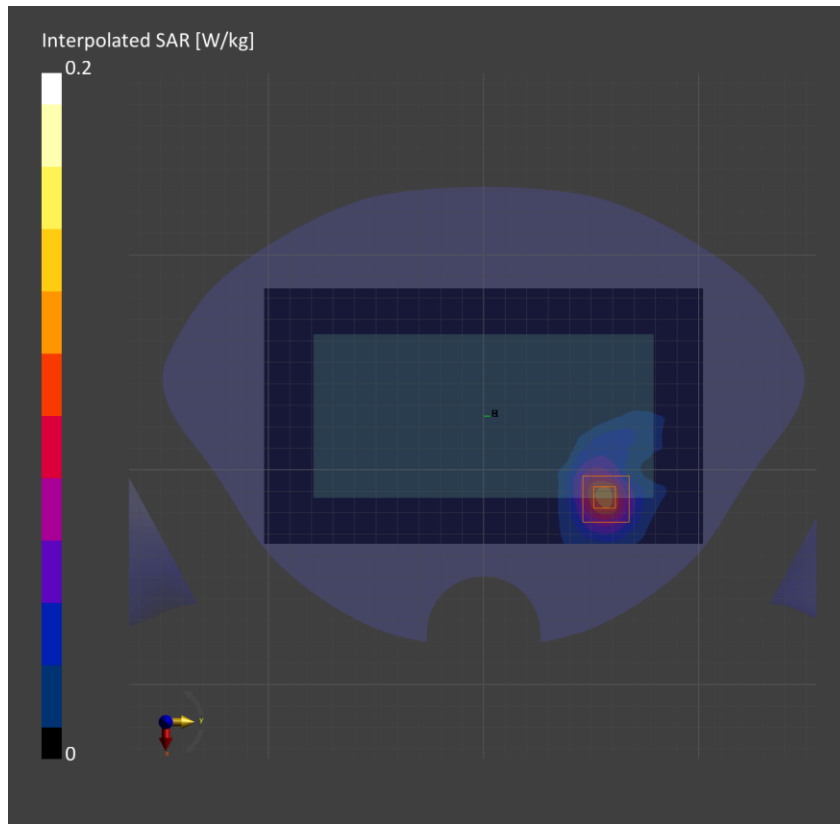
Phantom	TSL, Measured Date	Probe, Calibration Date	DAE, Calibration Date
Twin-SAM V8.0 (30deg probe tilt) - 2039	HBBL-600-10000, 2022-Oct-21	EX3DV4 - SN7545, 2022-08-19	DAE4 Sn1591, 2022-03-24

Scan Setup

	Area Scan	Zoom Scan
Grid Extents [mm]	119.0 x 204.0	22.0 x 22.0 x 22.0
Grid Steps [mm]	8.5 x 8.5	3.4 x 3.4 x 1.4
Sensor Surface [mm]	3.0	1.4

Measurement Results

	Area Scan	Zoom Scan
Date	2022-10-21	2022-10-21
psSAR1g [W/kg]	0.102	0.106
psSAR10g [W/kg]	0.037	0.039
psPDab (1.0cm2, sq) [W/m2]		1.06
psPDab (4.0cm2, sq) [W/m2]		0.876
Power Drift [dB]	-0.03	-0.06



Measurement Report for Device, EDGE 4, U-NII-7, UID 10707 AAC, Channel 123 (6565.0MHz)

Exposure Conditions

Phantom Section, TSL	Position, Test Distance [mm]	Band	Group, UID	Frequency [MHz], Channel Number	Conversion Factor	TSL Conductivity [S/m]	TSL Permittivity
Flat, HSL	EDGE 4, 0.00	U-NII-7	WLAN, 10707-AAC	6565.0, 123	5.35	6.02	33.6

Hardware Setup

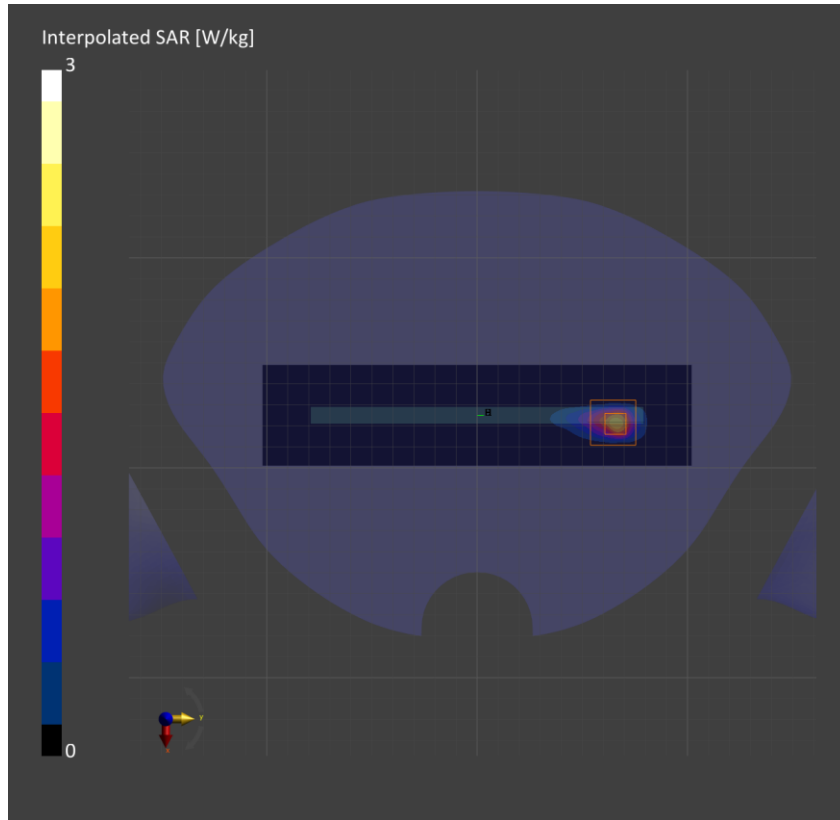
Phantom	TSL, Measured Date	Probe, Calibration Date	DAE, Calibration Date
Twin-SAM V8.0 (30deg probe tilt) - 2039	HBBL-600-10000, 2022-Oct-20	EX3DV4 - SN7545, 2022-08-19	DAE4 Sn1591, 2022-03-24

Scan Setup

	Area Scan	Zoom Scan
Grid Extents [mm]	48.0 x 204.0	22.0 x 22.0 x 22.0
Grid Steps [mm]	8.0 x 8.5	2.7 x 2.7 x 1.2
Sensor Surface [mm]	3.0	1.4

Measurement Results

	Area Scan	Zoom Scan
Date	2022-10-21	2022-10-21
psSAR1g [W/kg]	1.51	2.11
psSAR10g [W/kg]	0.381	0.437
psPDab (1.0cm ² , sq) [W/m ²]		21.1
psPDab (4.0cm ² , sq) [W/m ²]		10.4
Power Drift [dB]	-0.02	-0.09



Measurement Report for Device, EDGE 4, U-NII-5, UID 10707 AAC, Channel 43 (6165.0MHz)

Exposure Conditions

Phantom Section, TSL	Position, Test Distance [mm]	Band	Group, UID	Frequency [MHz], Channel Number	Conversion Factor	TSL Conductivity [S/m]	TSL Permittivity
Flat, HSL	EDGE 4, 0.00	U-NII-5	WLAN, 10707-AAC	6165.0, 43	5.35	5.52	34.2

Hardware Setup

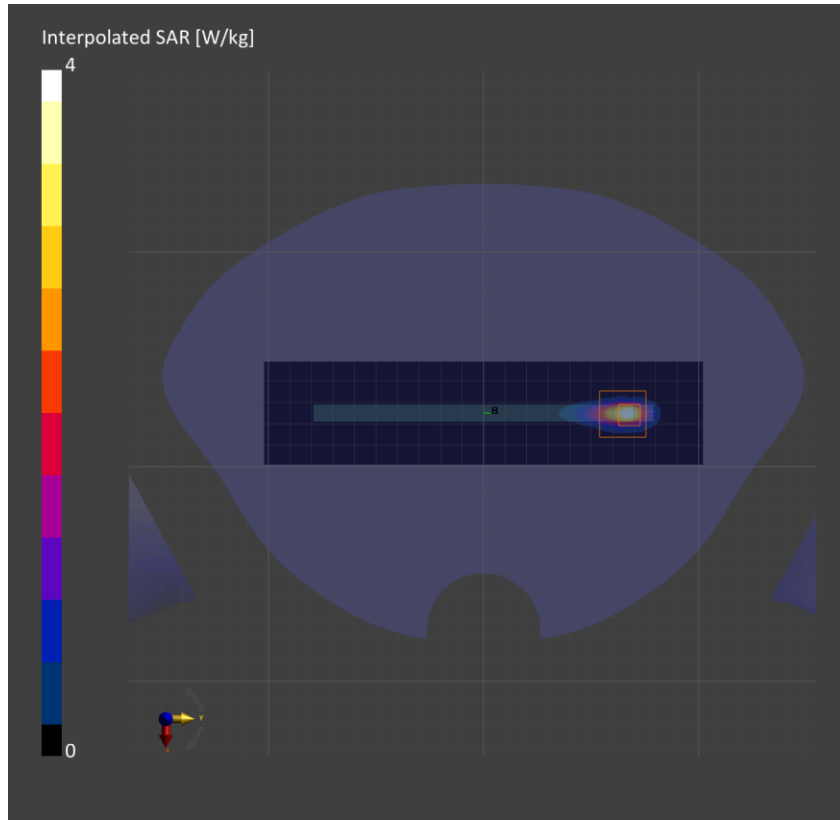
Phantom	TSL, Measured Date	Probe, Calibration Date	DAE, Calibration Date
Twin-SAM V8.0 (30deg probe tilt) - 2039	HBBL-600-10000, 2022-Oct-20	EX3DV4 - SN7545, 2022-08-19	DAE4 Sn1591, 2022-03-24

Scan Setup

	Area Scan	Zoom Scan
Grid Extents [mm]	48.0 x 204.0	22.0 x 22.0 x 22.0
Grid Steps [mm]	8.0 x 8.5	3.1 x 3.1 x 1.2
Sensor Surface [mm]	3.0	1.4

Measurement Results

	Area Scan	Zoom Scan
Date	2022-10-21	2022-10-21
psSAR1g [W/kg]	2.26	2.57
psSAR10g [W/kg]	0.505	0.555
psPDab (1.0cm ² , sq) [W/m ²]		25.7
psPDab (4.0cm ² , sq) [W/m ²]		13.2
Power Drift [dB]	0.06	0.03



Measurement Report for Device, FRONT, Custom Band, UID 0 -, Channel 6489600 (6489.6MHz)

Exposure Conditions

Phantom Section, TSL	Position, Test Distance [mm]	Band	Group, UID	Frequency [MHz], Channel Number	Conversion Factor	TSL Conductivity [S/m]	TSL Permittivity
Flat, HSL	FRONT, 0.00	Custom Band	CW,0--	6489.6, 6489600	5.2	5.90	35.0

Hardware Setup

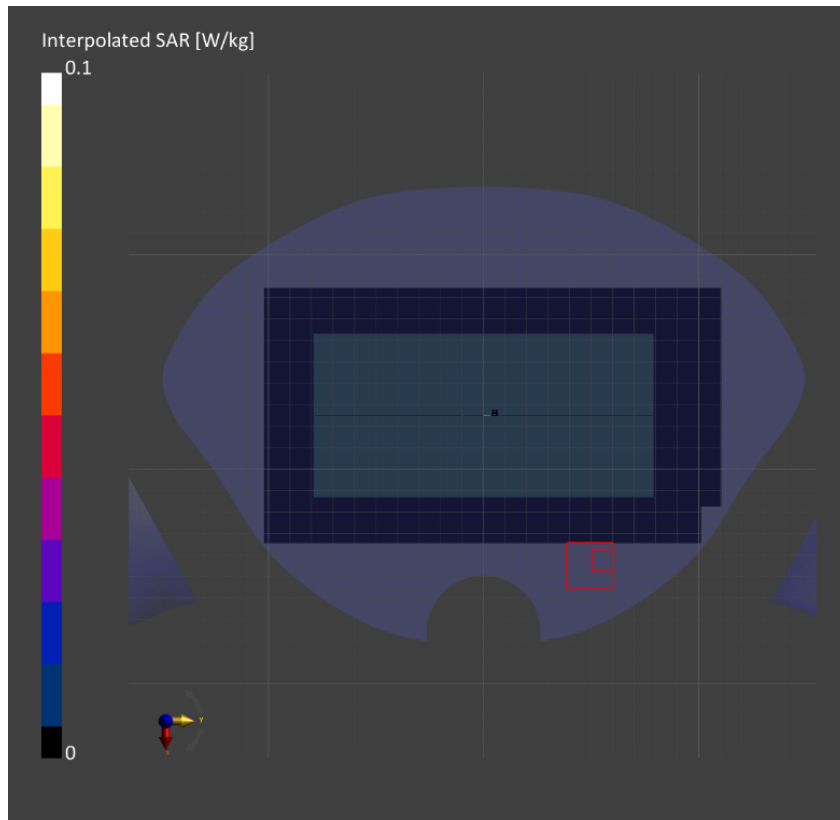
Phantom	TSL, Measured Date	Probe, Calibration Date	DAE, Calibration Date
Twin-SAM V8.0 (30deg probe tilt) - 2039	HBBL-600-10000, 2022-Oct-11	EX3DV4 - SN7376, 2022-07-27	DAE4 Sn1591, 2022-03-24

Scan Setup

	Area Scan	Zoom Scan
Grid Extents [mm]	119.0 x 204.0	22.0 x 22.0 x 22.0
Grid Steps [mm]	8.5 x 8.5	3.4 x 3.4 x 1.4
Sensor Surface [mm]	3.0	1.4

Measurement Results

	Area Scan	Zoom Scan
Date	2022-10-11	2022-10-11
psSAR1g [W/kg]	0	0.002
psSAR10g [W/kg]	0	0
psPDab (1.0cm ² , sq) [W/m ²]		0.020
psPDab (4.0cm ² , sq) [W/m ²]		0.022
Power Drift [dB]	-0.08	-0.01



Measurement Report for Device, Rear, Custom Band, UID 0 -, Channel 7987200 (7987.2MHz)

Exposure Conditions

Phantom Section, TSL	Position, Test Distance [mm]	Band	Group, UID	Frequency [MHz], Channel Number	Conversion Factor	TSL Conductivity [S/m]	TSL Permittivity
Flat, HSL	Rear, 0.00	Custom Band	CW, 0--	7987.2, 7987200	5.0	7.82	32.2

Hardware Setup

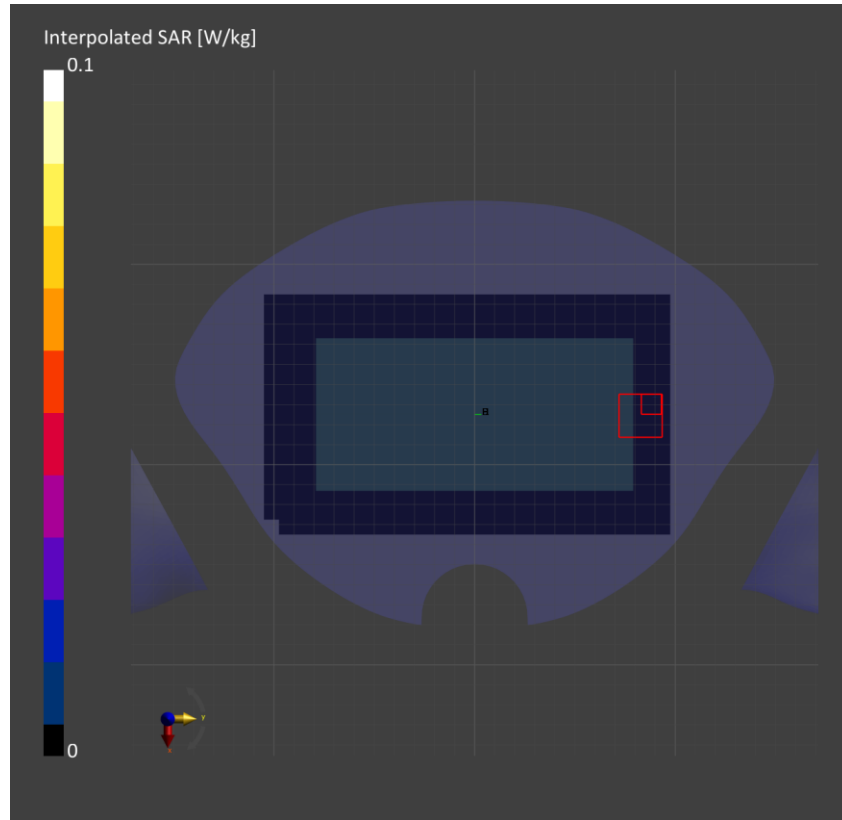
Phantom	TSL, Measured Date	Probe, Calibration Date	DAE, Calibration Date
Twin-SAM V8.0 (30deg probe tilt) - 2039	HBBL-600-10000, 2022-Oct-11	EX3DV4 - SN7376, 2022-07-27	DAE4 Sn1591, 2022-03-24

Scan Setup

	Area Scan	Zoom Scan
Grid Extents [mm]	120.0 x 195.0	22.0 x 22.0 x 22.0
Grid Steps [mm]	7.5 x 7.5	3.0 x 3.0 x 1.4
Sensor Surface [mm]	3.0	1.4

Measurement Results

	Area Scan	Zoom Scan
Date	2022-10-11	2022-10-11
psSAR1g [W/kg]	0	0.004
psSAR10g [W/kg]	0	0.001
psPDab (1.0cm2, sq) [W/m2]		0.043
psPDab (4.0cm2, sq) [W/m2]		0.030
Power Drift [dB]	0.04	0.08



Measurement Report for Device, EDGE RIGHT, U-NII-5, UID 10707 AAC, Channel 91 (6405.0MHz)

Exposure Conditions

Phantom Section	Position, Test Distance [mm]	Band	Group, UID	Frequency [MHz], Channel Number	Conversion Factor
5G Air	EDGE RIGHT, 2.00	U-NII-5	WLAN, 10707-AAC	6405.0, 91	1.0

Hardware Setup

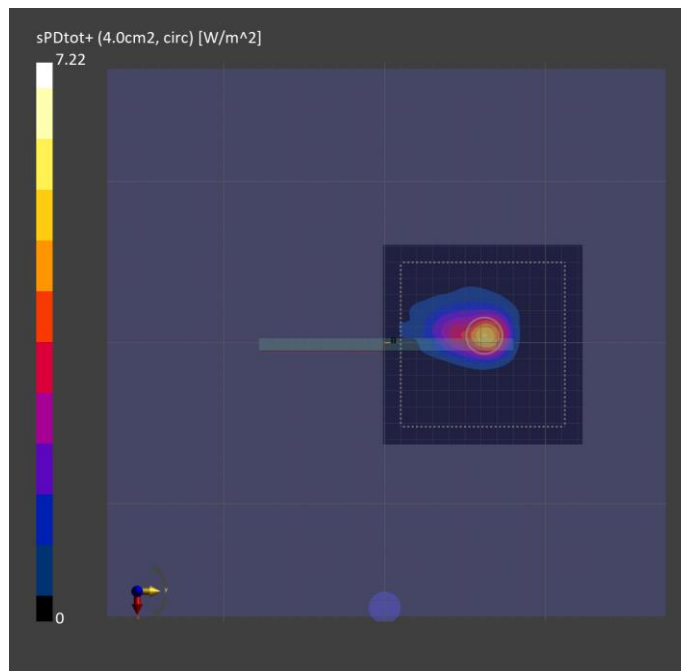
Phantom	Medium	Probe, Calibration Date	DAE, Calibration Date
mmWave- xxxx	---Air	EUmmWV4 - SN9493_F1-55GHz, 2022-01-27	DAE4 Sn1447, 2022-03-25

Scan Setup

	5G Scan
Grid Extents [mm]	120.0 x 120.0
Grid Steps [lambda]	0.05 x 0.05
Sensor Surface [mm]	2.0
MAIA	N/A

Measurement Results

	5G Scan
Date	2022-10-22, 20:59
Avg. Area [cm ²]	4.00
psPDn+ [W/m ²]	4.19
psPDtot+ [W/m ²]	5.46
psPDmod+ [W/m ²]	6.22
E _{max} [V/m]	75.8
Power Drift [dB]	-0.13



Measurement Report for Device, EDGE LEFT, Custom Band, UID 0 -, Channel 7987200 (7987.2MHz)

Exposure Conditions

Phantom Section	Position, Test Distance [mm]	Band	Group, UID	Frequency [MHz], Channel Number	Conversion Factor
5G Air	EDGE LEFT, 2.00	Custom Band	CW, 0--	7987.2, 7987200	1.0

Hardware Setup

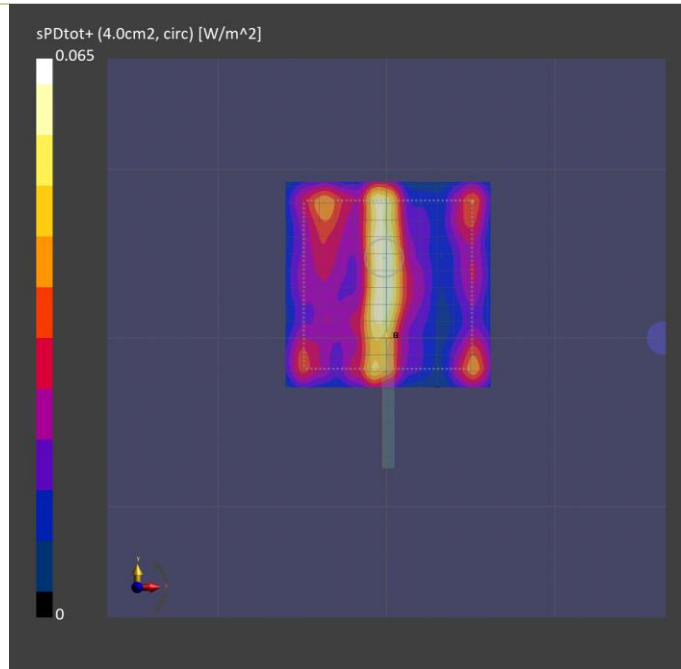
Phantom	Medium	Probe, Calibration Date	DAE, Calibration Date
mmWave- 1082	---Air	EUmmWV4 - SN9536_F1-55GHz, 2022-02-28	DAE4 Sn1670, 2022-06-07

Scan Setup

	5G Scan
Grid Extents [mm]	120.0 x 120.0
Grid Steps [lambda]	0.05 x 0.05
Sensor Surface [mm]	2.0
MAIA	Y

Measurement Results

	5G Scan
Date	2022-10-12, 14:10
Avg. Area [cm ²]	4.00
psPDn+ [W/m ²]	0.058
psPDtot+ [W/m ²]	0.060
psPDmod+ [W/m ²]	0.078
E _{max} [V/m]	8.79
Power Drift [dB]	0.19



Measurement Report for Device, FRONT, Custom Band, UID 0 -, Channel 7987200 (7987.2MHz)

Exposure Conditions

Phantom Section	Position, Test Distance [mm]	Band	Group, UID	Frequency [MHz], Channel Number	Conversion Factor
5G Air	FRONT, 2.00	Custom Band	CW, 0--	7987.2, 7987200	1.0

Hardware Setup

Phantom	Medium	Probe, Calibration Date	DAE, Calibration Date
mmWave- 1082	---Air	EUmmWV4 - SN9536_F1-55GHz, 2022-02-28	DAE4 Sn1670, 2022-06-07

Scan Setup

	5G Scan
Grid Extents [mm]	120.0 x 120.0
Grid Steps [lambda]	0.05 x 0.05
Sensor Surface [mm]	2.0
MAIA	Y

Measurement Results

	5G Scan
Date	2022-10-05, 21:54
Avg. Area [cm ²]	4.00
psPDn+ [W/m ²]	0.026
psPDtot+ [W/m ²]	0.027
psPDmod+ [W/m ²]	0.048
E _{max} [V/m]	6.73
Power Drift [dB]	0.17

