

APPENDIX E: DUT ANTENNA DIAGRAM & TEST SETUP PHOTOGRAPHS

FCC ID: A3LSMS911U	NEAR-FIELD POWER DENSITY EVALUATION REPORT	Approved by: Technical Manager
DUT Type: Portable Handset		APPENDIX E: Page 1 of 6

REV 2.0

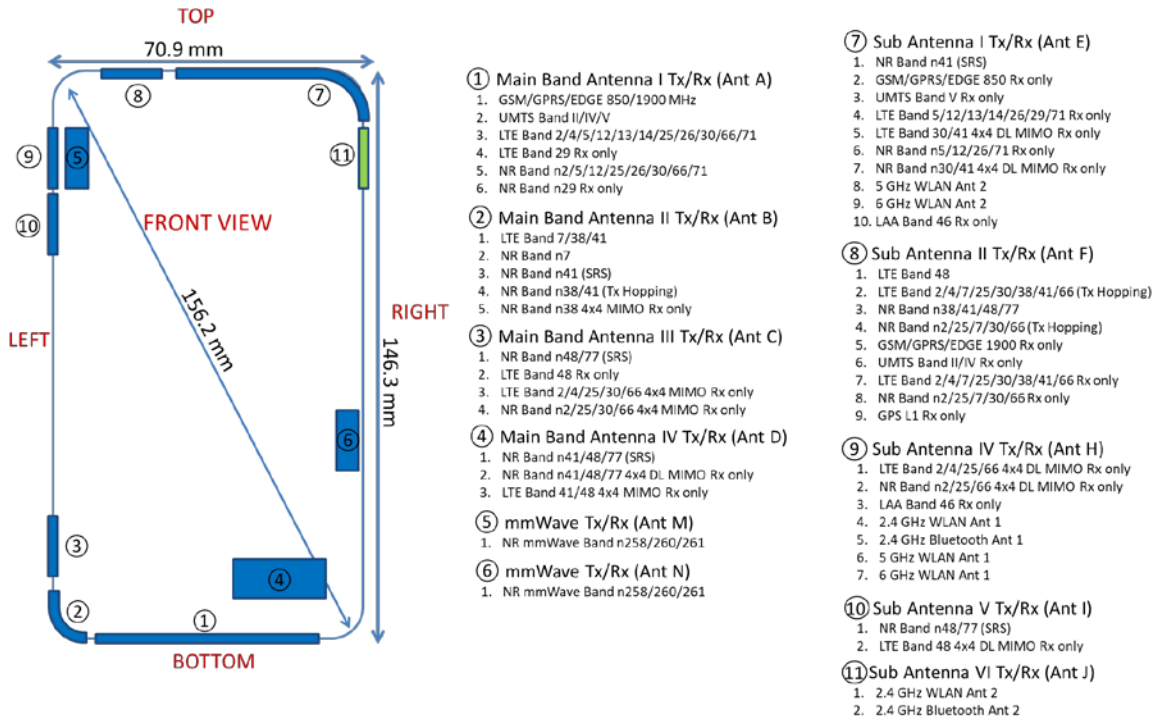


Figure E-1
DUT Antenna Locations

Note: Exact antenna dimensions and separation distances are shown in the Technical Descriptions in the FCC Filing.

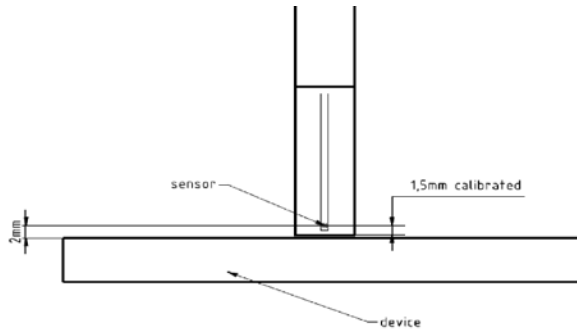


Figure E-3
EUMmWVx Probe

Note: Distances below are distance from device surface to sensor-center. Therefore, distances include 1.5 mm for Probe Tip to Sensor Calibration Points.

FCC ID: A3LSMS911U	NEAR-FIELD POWER DENSITY EVALUATION REPORT	Approved by: Technical Manager
DUT Type: Portable Handset		APPENDIX E: Page 2 of 6

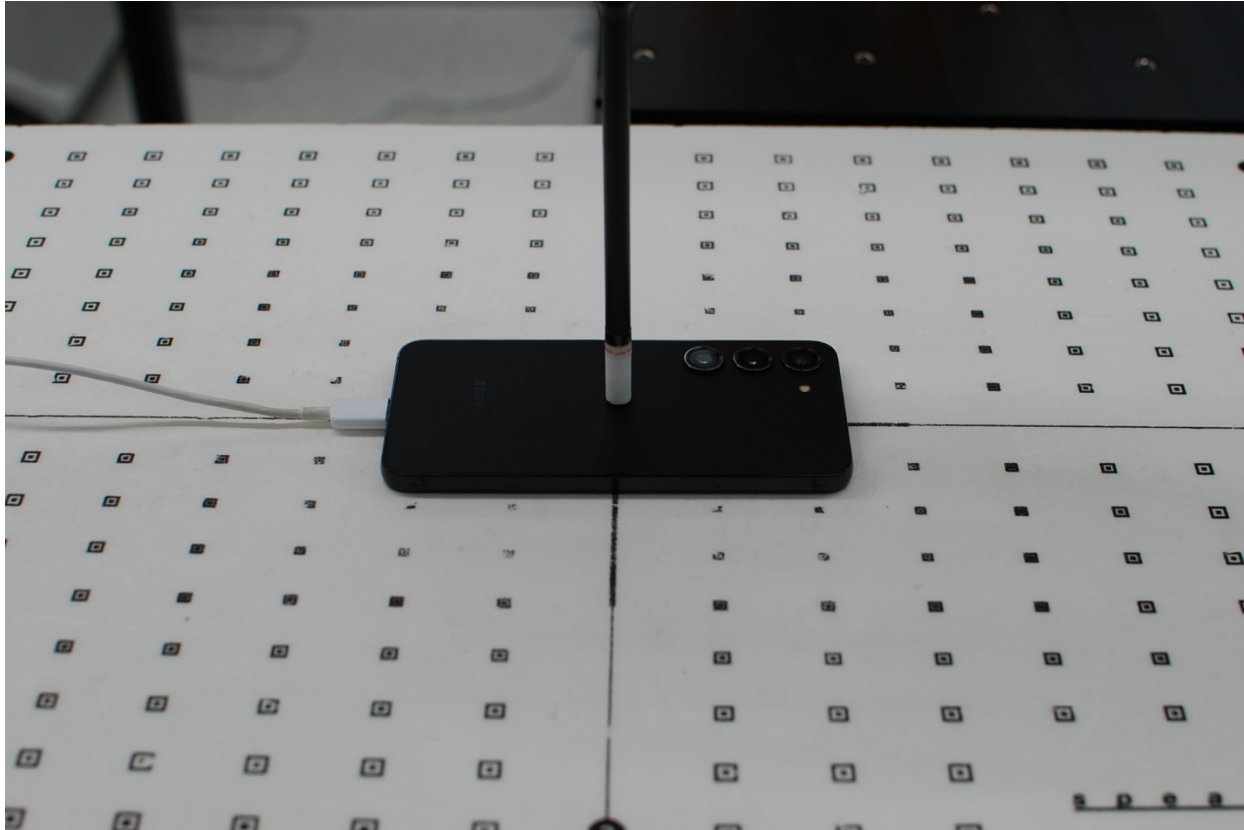


Figure E-4
Near Field Power Density Test Setup Photo – Back Side at 2 mm

<p>FCC ID: A3LSMS911U</p>	<p>NEAR-FIELD POWER DENSITY EVALUATION REPORT</p>	<p>Approved by: Technical Manager</p>
<p>DUT Type: Portable Handset</p>		<p>APPENDIX E: Page 3 of 6</p>



Figure E-5
Near Field Power Density Test Setup Photo – Back Side at 10 mm

FCC ID: A3LSMS911U	NEAR-FIELD POWER DENSITY EVALUATION REPORT	Approved by: Technical Manager
DUT Type: Portable Handset		APPENDIX E: Page 4 of 6



Figure E-6
Near Field Power Density Test Setup Photo – Front Side at 2 mm

<p>FCC ID: A3LSMS911U</p>	<p>NEAR-FIELD POWER DENSITY EVALUATION REPORT</p>	<p>Approved by: Technical Manager</p>
<p>DUT Type: Portable Handset</p>		<p>APPENDIX E: Page 5 of 6</p>

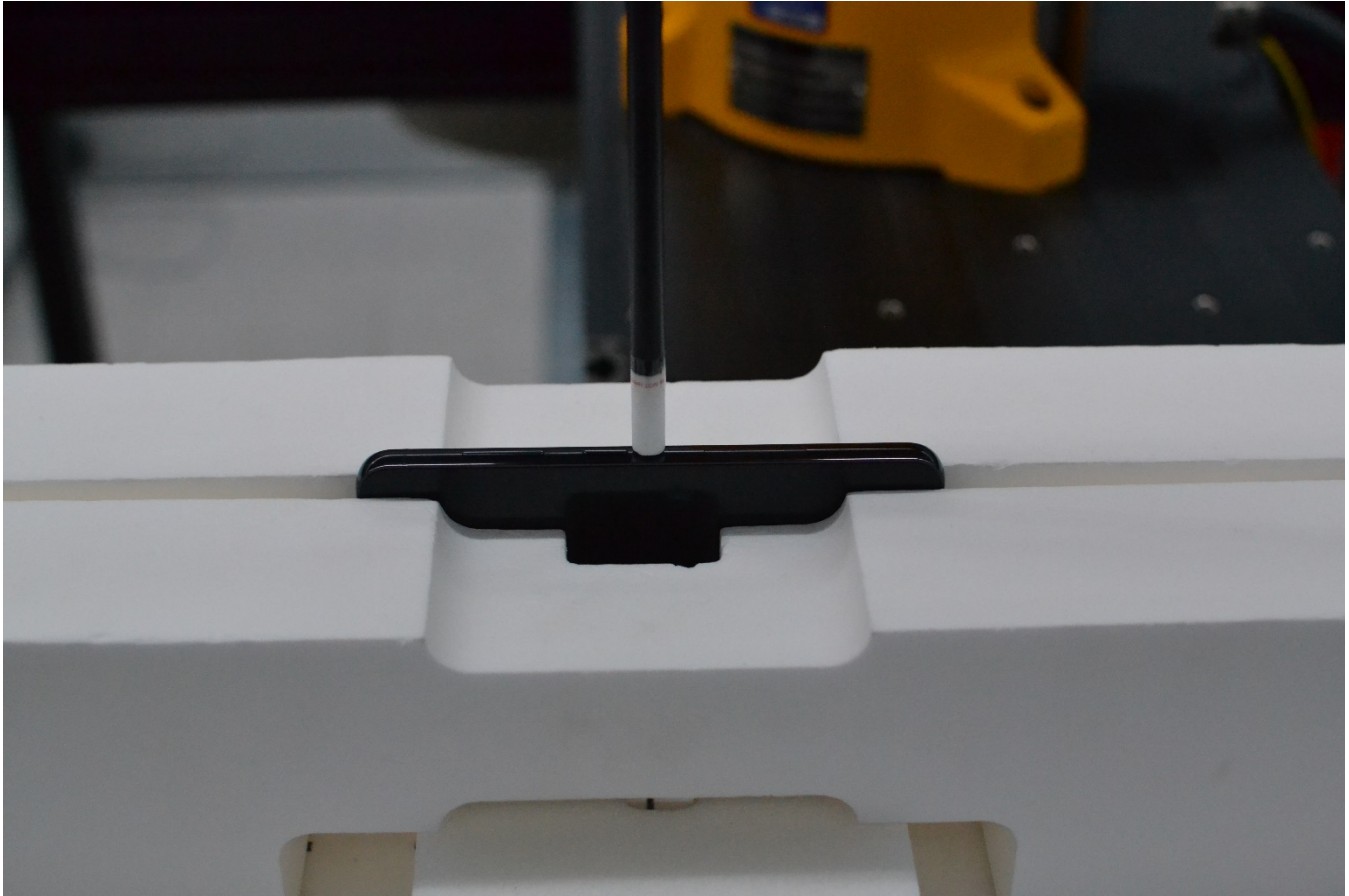


Figure E-7
Near Field Power Density Test Setup Photo – Right Edge at 2 mm

FCC ID: A3LSMS911U	NEAR-FIELD POWER DENSITY EVALUATION REPORT	Approved by: Technical Manager
DUT Type: Portable Handset		APPENDIX E: Page 6 of 6