

## APPENDIX B: POWER DENSITY SYSTEM VERIFICATION PLOTS

# Element

Date: 09/28/2022

30 GHz System Verification

## Device Under Test Properties

<b>DUT</b>	<b>Serial Number</b>
30 GHz Verification Source	1035

## Exposure Conditions

<b>Phantom Section</b>	<b>Position</b>	<b>Test Distance [mm]</b>	<b>Band</b>	<b>Frequency [MHz]</b>
5G	FRONT	5.55	Validation band	30000.0

## Hardware Setup

<b>Probe, Calibration Date</b>	<b>DAE, Calibration Date</b>
EUmWV3 - SN9421, 03/15/2022	DAE4 SN1530, 01/12/2022

## Software Setup

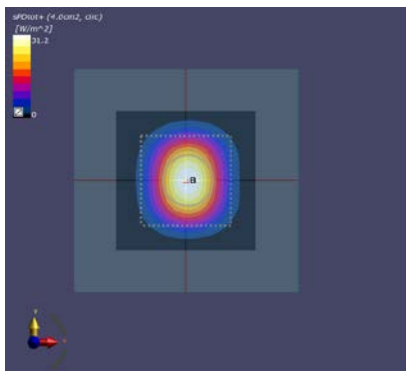
<b>Software</b>	<b>Software Version</b>
cDASY6 Module mmWave	3.0.0.841

## Scans Setup

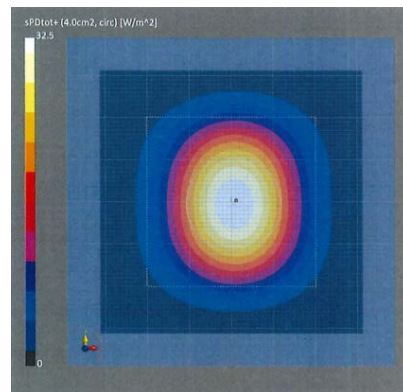
<b>Scan Type</b>	5G Scan
<b>Grid Extents [mm]</b>	60.0 x 60.0
<b>Grid Steps [lambda]</b>	0.25 x 0.25
<b>Sensor Surface [mm]</b>	5.55

## Measurement Results

<b>Scan Type</b>	5G Scan
<b>Avg. Area [cm<sup>2</sup>]</b>	4.00
<b>pS<sub>tot</sub> avg [W/m<sup>2</sup>]</b>	31.2
<b>pS<sub>n</sub> avg [W/m<sup>2</sup>]</b>	30.7
<b>E<sub>peak</sub> [V/m]</b>	127
<b>Deviation (dB)</b>	-0.16



30 GHz System Verification



Calibration Certificate

# Element

Date: 10/03/2022

30 GHz System Verification

## Device Under Test Properties

DUT	Serial Number
30 GHz Verification Source	1045

## Exposure Conditions

Phantom Section	Position	Test Distance [mm]	Band	Frequency [MHz]
5G	FRONT	5.55	Validation band	30000.0

## Hardware Setup

Probe, Calibration Date	DAE, Calibration Date
EUmmWV4 - SN9541, 05/19/2022	DAE4ip SN1638, 11/11/2021

## Software Setup

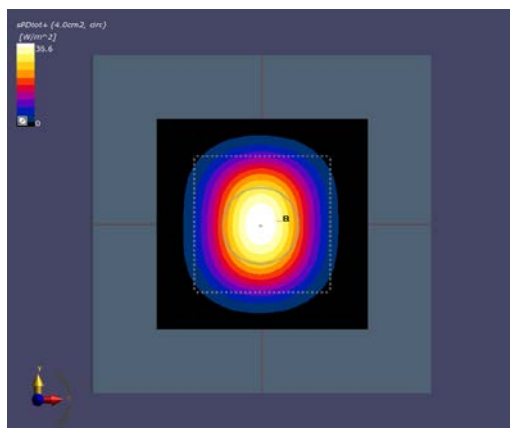
Software	Software Version
cDASY6 Module mmWave	3.0.0.841

## Scans Setup

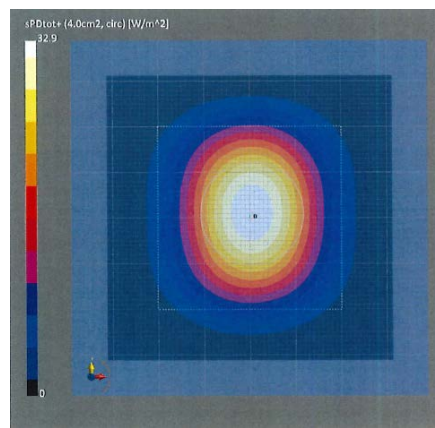
Scan Type	5G Scan
Grid Extents [mm]	60.0 x 60.0
Grid Steps [lambda]	0.25 x 0.25
Sensor Surface [mm]	5.55

## Measurement Results

Scan Type	5G Scan
Avg. Area [cm <sup>2</sup> ]	4.00
pS <sub>tot</sub> avg [W/m <sup>2</sup> ]	36.6
pS <sub>n</sub> avg [W/m <sup>2</sup> ]	36.1
E <sub>peak</sub> [V/m]	136
Deviation (dB)	0.49



30 GHz System Verification



Calibration Certificate

# Element

Date: 10/03/2022

30 GHz System Verification

## Device Under Test Properties

<b>DUT</b>	<b>Serial Number</b>
30 GHz Verification Source	1035

## Exposure Conditions

<b>Phantom Section</b>	<b>Position</b>	<b>Test Distance [mm]</b>	<b>Band</b>	<b>Frequency [MHz]</b>
5G	FRONT	5.55	Validation band	30000.0

## Hardware Setup

<b>Probe, Calibration Date</b>	<b>DAE, Calibration Date</b>
EUmWV3 - SN9407, 12/13/2021	DAE4ip SN1639, 01/21/2022

## Software Setup

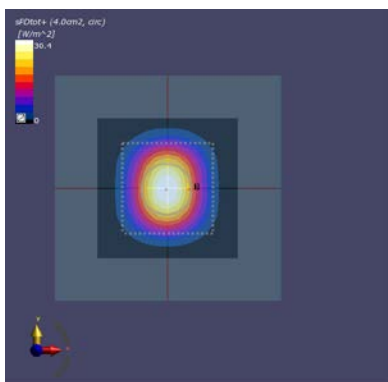
<b>Software</b>	<b>Software Version</b>
cDASY6 Module mmWave	3.0.0.841

## Scans Setup

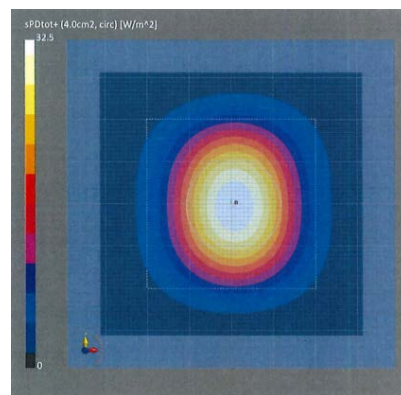
<b>Scan Type</b>	5G Scan
<b>Grid Extents [mm]</b>	60.0 x 60.0
<b>Grid Steps [lambda]</b>	0.25 x 0.25
<b>Sensor Surface [mm]</b>	5.55

## Measurement Results

<b>Scan Type</b>	5G Scan
<b>Avg. Area [cm<sup>2</sup>]</b>	4.00
<b>pS<sub>tot</sub> avg [W/m<sup>2</sup>]</b>	30.4
<b>pS<sub>n</sub> avg [W/m<sup>2</sup>]</b>	30.0
<b>E<sub>peak</sub> [V/m]</b>	125
<b>Deviation (dB)</b>	-0.28



30 GHz System Verification



Calibration Certificate

# Element

Date: 10/31/2022

30 GHz System Verification

## Device Under Test Properties

DUT	Serial Number
30 GHz Verification Source	1045

## Exposure Conditions

Phantom Section	Position	Test Distance [mm]	Band	Frequency [MHz]
5G	FRONT	5.55	Validation band	30000.0

## Hardware Setup

Probe, Calibration Date	DAE, Calibration Date
EUmmWV4 - SN9541, 05/19/2022	DAE4ip SN1639, 01/21/2022

## Software Setup

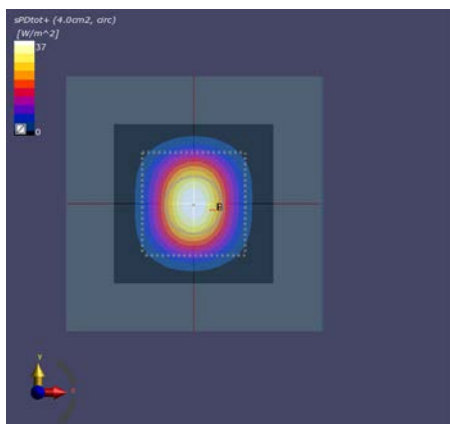
Software	Software Version
cDASY6 Module mmWave	3.0.0.841

## Scans Setup

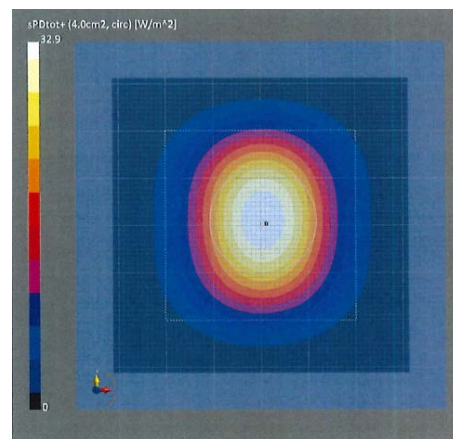
Scan Type	5G Scan
Grid Extents [mm]	60.0 x 60.0
Grid Steps [lambda]	0.25 x 0.25
Sensor Surface [mm]	5.55

## Measurement Results

Scan Type	5G Scan
Avg. Area [cm <sup>2</sup> ]	4.00
pS <sub>tot</sub> avg [W/m <sup>2</sup> ]	37.0
pS <sub>n</sub> avg [W/m <sup>2</sup> ]	36.6
E <sub>peak</sub> [V/m]	137
Deviation (dB)	0.54



30 GHz System Verification



Calibration Certificate

# Element

Date: 11/08/2022

30 GHz System Verification

## Device Under Test Properties

DUT	Serial Number
30 GHz Verification Source	1045

## Exposure Conditions

Phantom Section	Position	Test Distance [mm]	Band	Frequency [MHz]
5G	FRONT	5.55	Validation band	30000.0

## Hardware Setup

Probe, Calibration Date	DAE, Calibration Date
EUmWV3 - SN9407, 10/17/2022	DAE4ip SN1638, 10/13/2022

## Software Setup

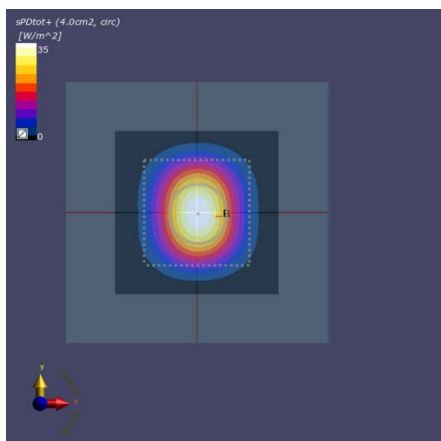
Software	Software Version
cDASY6 Module mmWave	3.0.0.841

## Scans Setup

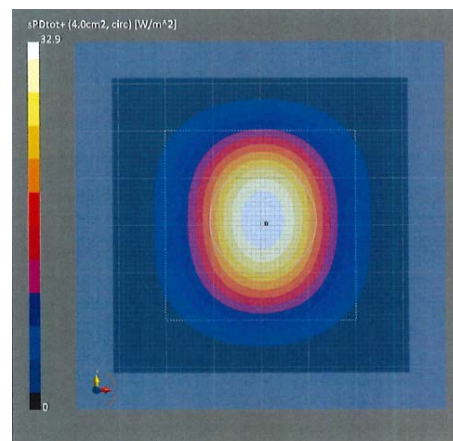
Scan Type	5G Scan
Grid Extents [mm]	60.0 x 60.0
Grid Steps [lambda]	0.25 x 0.25
Sensor Surface [mm]	5.55

## Measurement Results

Scan Type	5G Scan
Avg. Area [cm <sup>2</sup> ]	4.00
pS <sub>tot</sub> avg [W/m <sup>2</sup> ]	35.0
pS <sub>n</sub> avg [W/m <sup>2</sup> ]	34.6
E <sub>peak</sub> [V/m]	135
Deviation (dB)	0.30



30 GHz System Verification



Calibration Certificate

# Element

Date: 11/08/2022

30 GHz System Verification

## Device Under Test Properties

DUT	Serial Number
30 GHz Verification Source	1035

## Exposure Conditions

Phantom Section	Position	Test Distance [mm]	Band	Frequency [MHz]
5G	FRONT	5.55	Validation band	30000.0

## Hardware Setup

Probe, Calibration Date	DAE, Calibration Date
EUmmWV3 - SN9622, 02/24/2022	DAE4 SN1676, 06/15/2022

## Software Setup

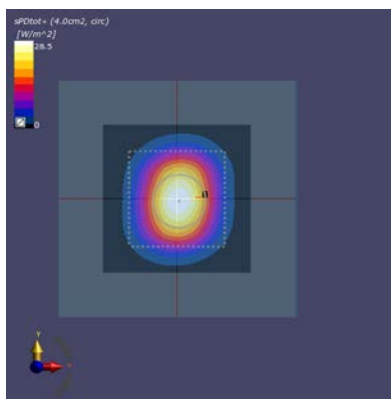
Software	Software Version
cDASY6 Module mmWave	3.0.0.841

## Scans Setup

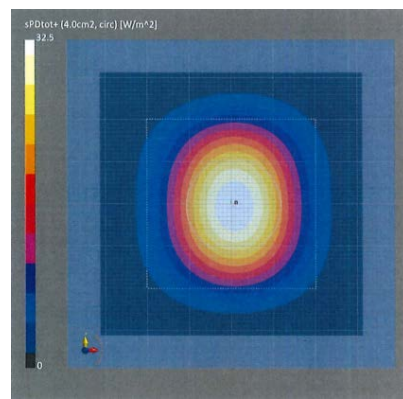
Scan Type	5G Scan
Grid Extents [mm]	60.0 x 60.0
Grid Steps [lambda]	0.25 x 0.25
Sensor Surface [mm]	5.55

## Measurement Results

Scan Type	5G Scan
Avg. Area [cm <sup>2</sup> ]	4.00
pS <sub>tot</sub> avg [W/m <sup>2</sup> ]	28.5
pS <sub>n</sub> avg [W/m <sup>2</sup> ]	28.2
E <sub>peak</sub> [V/m]	126
Deviation (dB)	-0.56



30 GHz System Verification



Calibration Certificate