

APPENDIX A: POWER DENSITY TEST PLOTS

Element

Date: 10/07/2022

Antenna M Beam 25; V; High Ch.; CW

Device Under Test Properties

DUT	Serial Number	DUT Type
A3LSMS911U	VHV0263M	Portable Handset

Exposure Conditions

Phantom Section	Position	Test Distance [mm]	Band	Frequency [MHz]
5G	BACK	2.00	n258	25200.00

Hardware Setup

Probe, Calibration Date	DAE, Calibration Date
EUmmWV4 - SN9541, 05/19/2022	DAE4ip SN1639, 01/21/2022

Software Setup

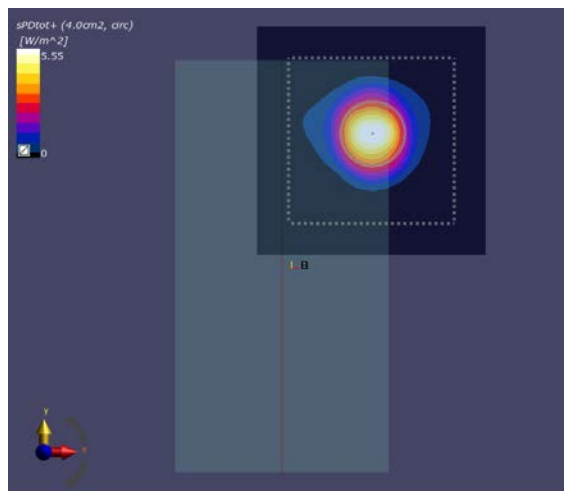
Software	Software Version
cDASY6 Module mmWave	3.0.0.841

Scans Setup

Scan Type	5G Scan
Grid Extents [mm]	80x80
Grid Steps [lambda]	0.25 x 0.25
Sensor Surface [mm]	2.0

Measurement Results

Scan Type	5G Scan
Avg. Area [cm ²]	4.00
pS _{tot} avg [W/m ²]	5.55
pS _n avg [W/m ²]	4.29
E _{peak} [V/m]	85.9
Power Drift [dB]	-0.11



Element

Date: 09/28/2022

Antenna N Beam 157; H; Low Ch.; CW

Device Under Test Properties

DUT	Serial Number	DUT Type
A3LSMS911U	VHV0317M	Portable Handset

Exposure Conditions

Phantom Section	Position	Test Distance [mm]	Band	Frequency [MHz]
5G	Right	2.00	n258	24350.00

Hardware Setup

Probe, Calibration Date	DAE, Calibration Date
EUmmWV3 - SN9421, 03/15/2022	DAE4 SN1530, 01/12/2022

Software Setup

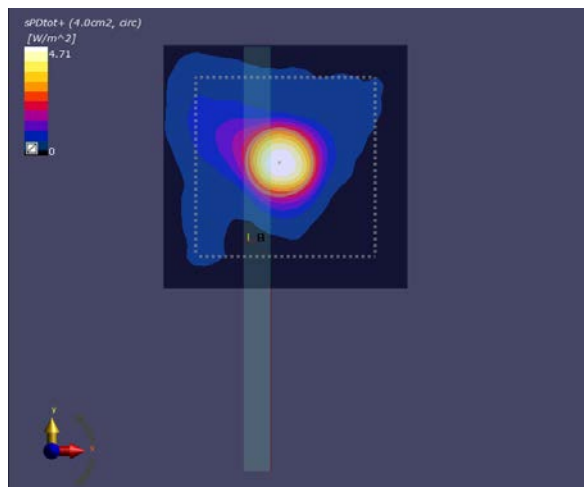
Software	Software Version
cDASY6 Module mmWave	3.0.0.841

Scans Setup

Scan Type	5G Scan
Grid Extents [mm]	80x80
Grid Steps [lambda]	0.25 x 0.25
Sensor Surface [mm]	2.0

Measurement Results

Scan Type	5G Scan
Avg. Area [cm ²]	4.00
pS _{tot} avg [W/m ²]	4.71
pS _n avg [W/m ²]	3.49
E _{peak} [V/m]	84.7
Power Drift [dB]	0.15



Element

Date: 10/03/2022

Antenna M Beam 156; H; Low Ch.; CW

Device Under Test Properties

DUT	Serial Number	DUT Type
A3LSMS911U	VHV0263M	Portable Handset

Exposure Conditions

Phantom Section	Position	Test Distance [mm]	Band	Frequency [MHz]
5G	BACK	2.00	n261	27550.10

Hardware Setup

Probe, Calibration Date	DAE, Calibration Date
EUmmWV4 - SN9541, 05/19/2022	DAE4ip SN1638, 11/11/2021

Software Setup

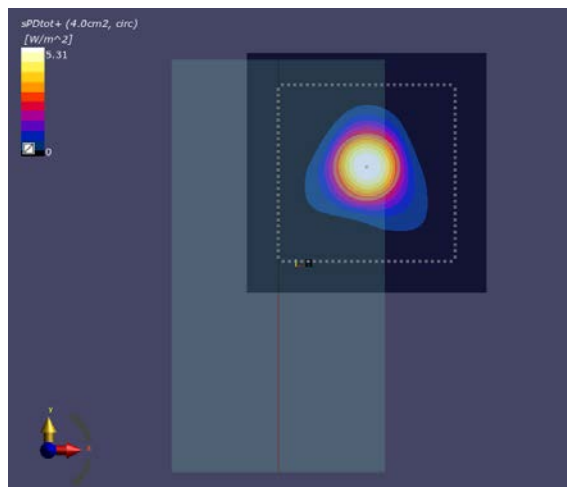
Software	Software Version
cDASY6 Module mmWave	3.0.0.841

Scans Setup

Scan Type	5G Scan
Grid Extents [mm]	80x80
Grid Steps [lambda]	0.25 x 0.25
Sensor Surface [mm]	2.0

Measurement Results

Scan Type	5G Scan
Avg. Area [cm ²]	4.00
pS _{tot} avg [W/m ²]	5.31
pS _n avg [W/m ²]	3.14
E _{peak} [V/m]	82.9
Power Drift [dB]	-0.09



Element

Date: 10/03/2022

Antenna N Beam 158; H; High Ch.; CW

Device Under Test Properties

DUT	Serial Number	DUT Type
A3LSMS911U	VHV0317M	Portable Handset

Exposure Conditions

Phantom Section	Position	Test Distance [mm]	Band	Frequency [MHz]
5G	RIGHT	2.00	n261	28300.00

Hardware Setup

Probe, Calibration Date	DAE, Calibration Date
EUmmWV3 - SN9421, 03/15/2022	DAE4 SN1530, 01/12/2022

Software Setup

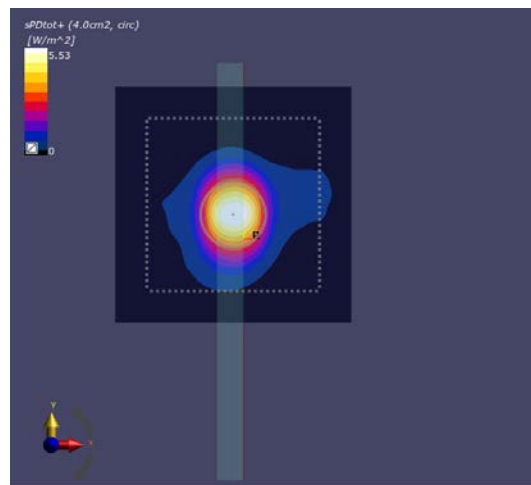
Software	Software Version
cDASY6 Module mmWave	3.0.0.841

Scans Setup

Scan Type	5G Scan
Grid Extents [mm]	80x80
Grid Steps [lambda]	0.25 x 0.25
Sensor Surface [mm]	2.0

Measurement Results

Scan Type	5G Scan
Avg. Area [cm ²]	4.00
pS _{tot} avg [W/m ²]	5.53
pS _n avg [W/m ²]	5.08
E _{peak} [V/m]	77.5
Power Drift [dB]	-0.12



Element

Date: 10/03/2022

Antenna M Beam 165; H; High Ch.; CW

Device Under Test Properties

DUT	Serial Number	DUT Type
A3LSMS911U	VHV0263M	Portable Handset

Exposure Conditions

Phantom Section	Position	Test Distance [mm]	Band	Frequency [MHz]
5G	BACK	2.00	n260	39949.90

Hardware Setup

Probe, Calibration Date	DAE, Calibration Date
EUmWV4 - SN9541, 05/19/2022	DAE4ip SN1638, 11/11/2021

Software Setup

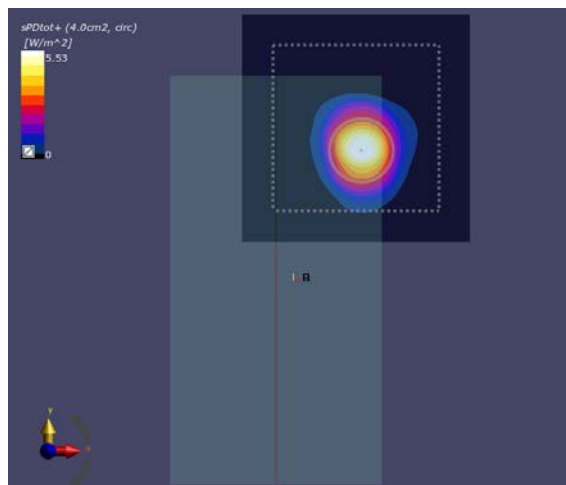
Software	Software Version
cDASY6 Module mmWave	3.0.0.841

Scans Setup

Scan Type	5G Scan
Grid Extents [mm]	80x80
Grid Steps [lambda]	0.25 x 0.25
Sensor Surface [mm]	2.0

Measurement Results

Scan Type	5G Scan
Avg. Area [cm ²]	4.00
pS _{tot} avg [W/m ²]	5.53
pS _n avg [W/m ²]	4.22
E _{peak} [V/m]	85.5
Power Drift [dB]	-0.18



Element

Date: 09/28/2022

Antenna N Beam 159; H; High Ch.; CW

Device Under Test Properties

DUT	Serial Number	DUT Type
A3LSMS911U	VHV0317M	Portable Handset

Exposure Conditions

Phantom Section	Position	Test Distance [mm]	Band	Frequency [MHz]
5G	RIGHT	2.00	n260	39949.90

Hardware Setup

Probe, Calibration Date	DAE, Calibration Date
EUmMWV3 - SN9421, 03/15/2022	DAE4 SN1530, 01/12/2022

Software Setup

Software	Software Version
cDASY6 Module mmWave	3.0.0.841

Scans Setup

Scan Type	5G Scan
Grid Extents [mm]	100x100
Grid Steps [lambda]	0.25 x 0.25
Sensor Surface [mm]	2.0

Measurement Results

Scan Type	5G Scan
Avg. Area [cm ²]	4.00
pS _{tot} avg [W/m ²]	4.08
pS _n avg [W/m ²]	3.19
E _{peak} [V/m]	77.6
Power Drift [dB]	0.03

