

## APPENDIX B: SYSTEM VERIFICATION PLOTS

# ELEMENT

**DUT: Dipole 6500.0 MHz; Type: D6.5GHzV2 - SN1018**

Communication System: UID: 0, CW; Frequency: 6500.0 MHz  
Medium: 6000 Head; Medium parameters used:  
f = 6500.0 MHz; cond = 6.13 S/m; perm = 33.6; density = 1000 kg/m<sup>3</sup>  
Phantom Section: Flat; Space: 5 mm

Test Date: 10/13/2022; Ambient Temp: 22.0°C; Tissue Temp: 22.1°C

Probe: EX3DV4 - SN3914; ConvF:(5.5,5.5,5.5); Calibrated: 2022-05-17  
Sensor-Surface: 1.4mm (VMS + 6p)  
Electronics: DAE4 Sn728; Calibrated: 2022-05-10  
Phantom: Twin-SAM V5.0; Serial: 1759  
Measurement SW: DASY Module SAR V16.2.0.1425

## 6500.0 MHz System Verification at 14.0 dBm (25 mW)

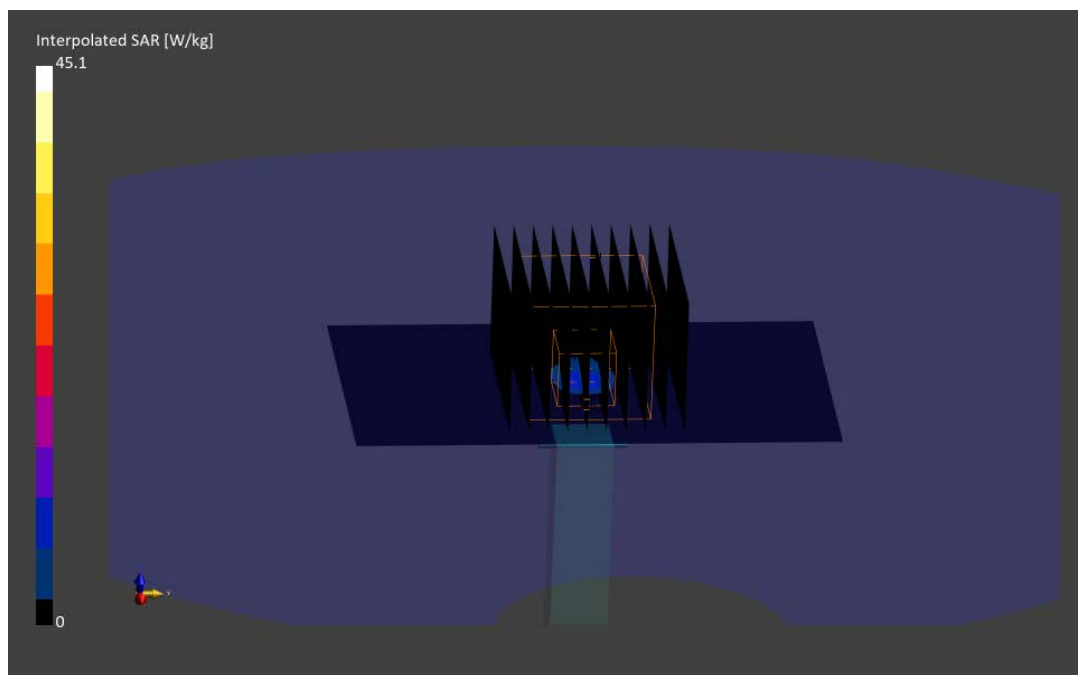
**Area Scan (51.0 x 85.0):** Measurement grid: dx=8.5 mm, dy=8.5 mm

**Zoom Scan (22.0 x 22.0 x 22.0):** Measurement grid: dx=3.4 mm, dy=3.4 mm, dz=1.4 mm; Graded  
Ratio: 1.4

Peak SAR (extrapolated) = 45.1 W/kg

**SAR(1 g) = 7.00 W/kg; SAR(10 g) = 1.29 W/kg; APD(4cm<sup>2</sup>)=31.4 W/m<sup>2</sup>**

Deviation (1 g) = -3.45%; Deviation (10 g) = -3.01%; Deviation (4cm<sup>2</sup>) = -4.12%



# ELEMENT

**DUT: Dipole 6500.0 MHz; Type: D6.5GHzV2 - SN1018**

Communication System: UID: 0, CW; Frequency: 6500.0 MHz  
Medium: 6000 Head; Medium parameters used:  
f = 6500.0 MHz; cond = 6.19 S/m; perm = 34.9; density = 1000 kg/m<sup>3</sup>  
Phantom Section: Flat; Space: 5 mm

Test Date: 10/17/2022; Ambient Temp: 23.7°C; Tissue Temp: 22.6°C

Probe: EX3DV4 - SN3914; ConvF:(5.5,5.5,5.5); Calibrated: 2022-05-17  
Sensor-Surface: 1.4mm (VMS + 6p)  
Electronics: DAE4 Sn728; Calibrated: 2022-05-10  
Phantom: Twin-SAM V5.0; Serial: 1759  
Measurement SW: DASY Module SAR V16.2.0.1425

## 6500.0 MHz System Verification at 14.0 dBm (25 mW)

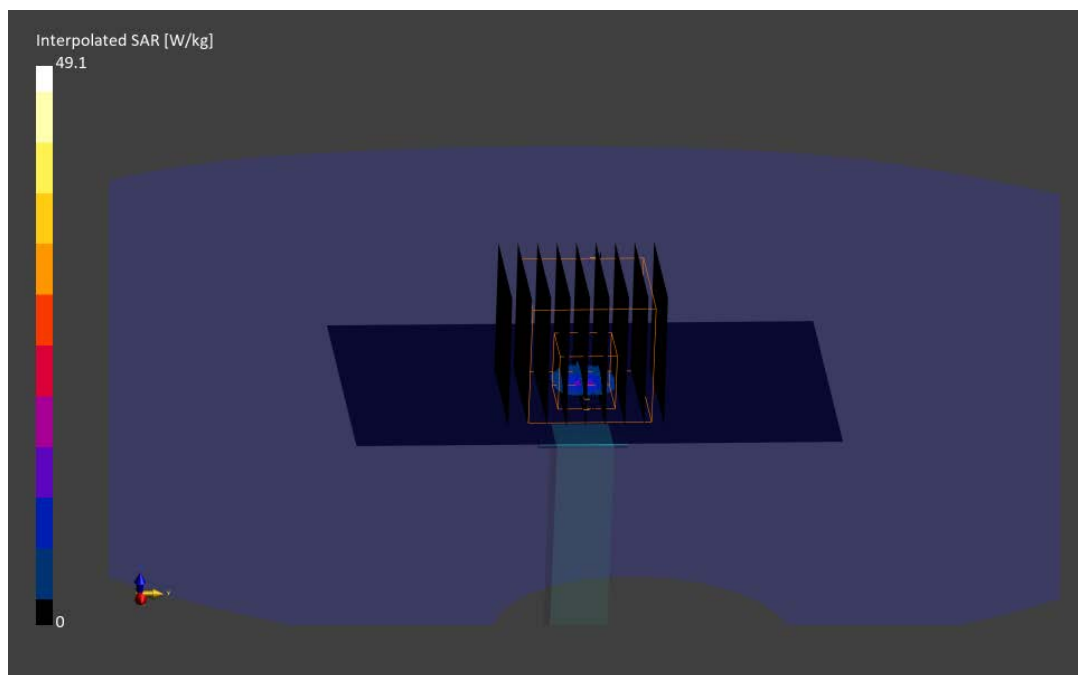
**Area Scan (51.0 x 85.0):** Measurement grid: dx=8.5 mm, dy=8.5 mm

**Zoom Scan (22.0 x 22.0 x 22.0):** Measurement grid: dx=3.4 mm, dy=3.4 mm, dz=1.4 mm; Graded  
Ratio: 1.4

Peak SAR (extrapolated) = 49.1 W/kg

**SAR(1 g) = 7.53 W/kg; SAR(10 g) = 1.37 W/kg; APD(4cm<sup>2</sup>) = 33.5 W/m<sup>2</sup>**

Deviation (1 g) = 3.86%; Deviation (10 g) = 3.01%; Deviation (4cm<sup>2</sup>) = 2.29%



# Element

Date: 10/12/2022

10 GHz System Verification

## Device Under Test Properties

<b>DUT</b>	<b>Serial Number</b>
10 GHz Verification Source	1004

## Exposure Conditions

<b>Phantom Section</b>	<b>Position</b>	<b>Test Distance [mm]</b>	<b>Band</b>	<b>Frequency [MHz]</b>
5G	FRONT	10.00	Validation band	10000.0

## Hardware Setup

<b>Probe, Calibration Date</b>	<b>DAE, Calibration Date</b>
EUmmWV4 - SN9622, 02/24/2022	DAE4 SN1676, 06/15/2022

## Software Setup

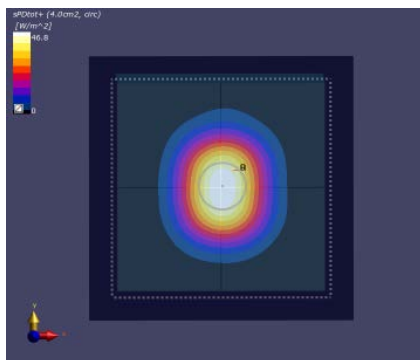
<b>Software</b>	<b>Software Version</b>
cDASY6 Module mmWave	3.0.0.841

## Scans Setup

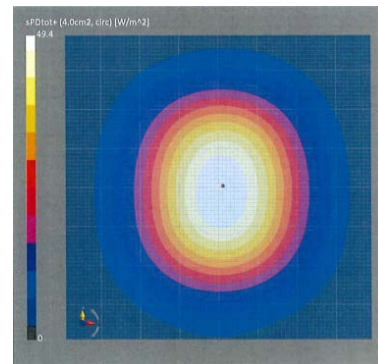
<b>Scan Type</b>	5G Scan
<b>Grid Extents [mm]</b>	120 x 120
<b>Grid Steps [lambda]</b>	0.25 x 0.25
<b>Sensor Surface [mm]</b>	10.00

## Measurement Results

<b>Scan Type</b>	5G Scan
<b>Avg. Area [cm<sup>2</sup>]</b>	4.00
<b>pStot avg [W/m<sup>2</sup>]</b>	46.8
<b>pSn avg [W/m<sup>2</sup>]</b>	46.6
<b>Epeak [V/m]</b>	142
<b>Deviation pStot (dB)</b>	-0.23
<b>Deviation pSn (dB)</b>	-0.25



10 GHz System Verification



Calibration Certification