

## APPENDIX B: POWER DENSITY SYSTEM VERIFICATION PLOTS

# PCTEST

Date: 10/21/2021

30 GHz System Verification

## Device Under Test Properties

DUT	Serial Number
30 GHz Verification Source	1035

## Exposure Conditions

Phantom Section	Position	Test Distance [mm]	Band	Frequency [MHz]
5G	FRONT	5.55	Validation band	30000.00

## Hardware Setup

Probe, Calibration Date	DAE, Calibration Date
EUmmWV3 - SN9389, 11/16/2020	DAE4ip SN1638, 11/17/2020

## Software Setup

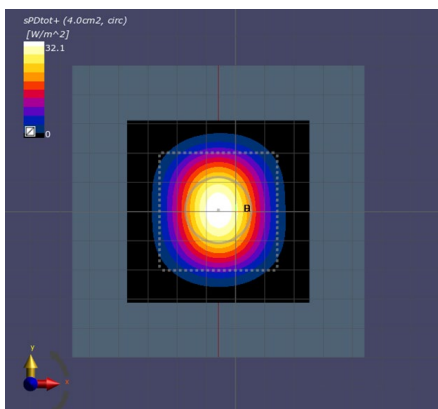
Software	Software Version
cDASY6 Module mmWave	2.4.2.62

## Scans Setup

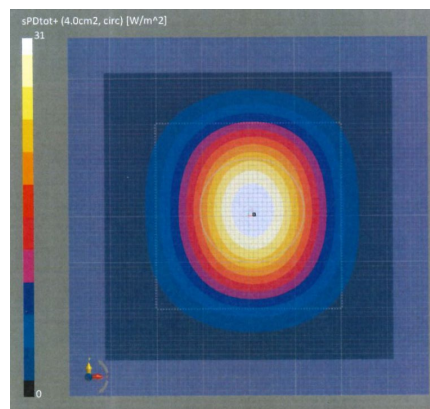
Scan Type	5G Scan
Grid Extents [mm]	60.0 x 60.0
Grid Steps [lambda]	0.25 x 0.25
Sensor Surface [mm]	5.55

## Measurement Results

Scan Type	5G Scan
Avg. Area [cm <sup>2</sup> ]	4.00
pS <sub>tot</sub> avg [W/m <sup>2</sup> ]	32.1
pS <sub>n</sub> avg [W/m <sup>2</sup> ]	31.7
E <sub>peak</sub> [V/m]	129.0
Deviation (dB)	0.15



30 GHz System Verification



Calibration Certificate

# PCTEST

Date: 10/25/2021

30 GHz System Verification

## Device Under Test Properties

DUT	Serial Number
30 GHz Verification Source	1045

## Exposure Conditions

Phantom Section	Position	Test Distance [mm]	Band	Frequency [MHz]
5G	FRONT	5.55	Validation band	30000.00

## Hardware Setup

Probe, Calibration Date	DAE, Calibration Date
EUmmWV4 - SN9541, 05/20/2021	DAE4 SN665, 02/12/2021

## Software Setup

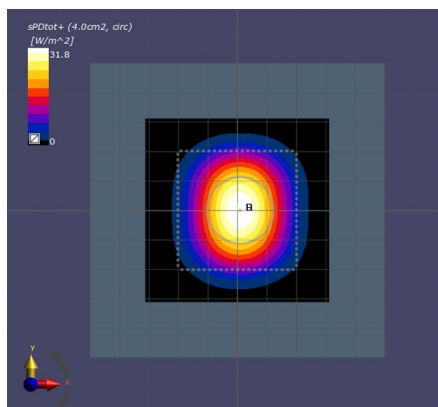
Software	Software Version
cDASY6 Module mmWave	2.4.2.62

## Scans Setup

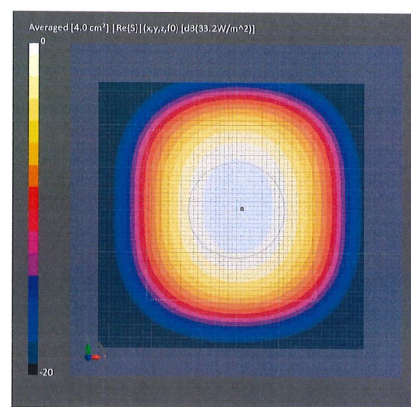
Scan Type	5G Scan
Grid Extents [mm]	60.0 x 60.0
Grid Steps [lambda]	0.25 x 0.25
Sensor Surface [mm]	5.55

## Measurement Results

Scan Type	5G Scan
Avg. Area [cm <sup>2</sup> ]	4.00
pS <sub>tot</sub> avg [W/m <sup>2</sup> ]	31.8
pS <sub>n</sub> avg [W/m <sup>2</sup> ]	31.3
E <sub>peak</sub> [V/m]	128.0
Deviation (dB)	-0.19



30 GHz System Verification



Calibration Certificate

# PCTEST

Date: 10/25/2021

30 GHz System Verification

## Device Under Test Properties

DUT	Serial Number
30 GHz Verification Source	1045

## Exposure Conditions

Phantom Section	Position	Test Distance [mm]	Band	Frequency [MHz]
5G	FRONT	5.55	Validation band	30000.00

## Hardware Setup

Probe, Calibration Date	DAE, Calibration Date
EUmmWV4 - SN9523, 01/11/2021	DAE4ip SN1639, 11/17/2020

## Software Setup

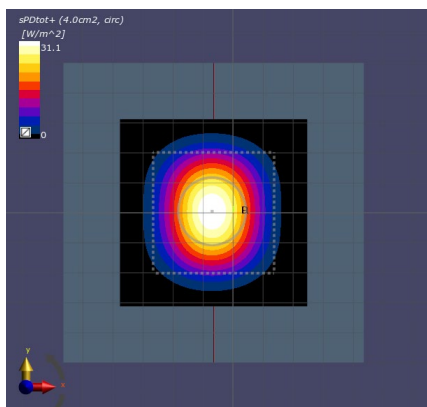
Software	Software Version
cDASY6 Module mmWave	2.4.2.62

## Scans Setup

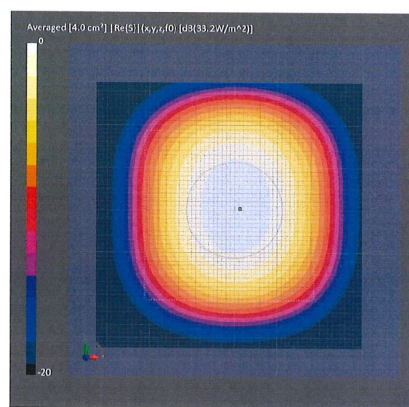
Scan Type	5G Scan
Grid Extents [mm]	60.0 x 60.0
Grid Steps [lambda]	0.25 x 0.25
Sensor Surface [mm]	5.55

## Measurement Results

Scan Type	5G Scan
Avg. Area [cm <sup>2</sup> ]	4.00
pS <sub>tot</sub> avg [W/m <sup>2</sup> ]	31.1
pS <sub>n</sub> avg [W/m <sup>2</sup> ]	30.6
E <sub>peak</sub> [V/m]	125.0
Deviation (dB)	-0.28



30 GHz System Verification



Calibration Certificate

# PCTEST

Date: 11/11/2021

30 GHz System Verification

## Device Under Test Properties

DUT	Serial Number
30 GHz Verification Source	1045

## Exposure Conditions

Phantom Section	Position	Test Distance [mm]	Band	Frequency [MHz]
5G	FRONT	5.55	Validation band	30000.00

## Hardware Setup

Probe, Calibration Date	DAE, Calibration Date
EUmWV4 - SN9523, 01/11/2021	DAE4 SN1449, 09/15/2021

## Software Setup

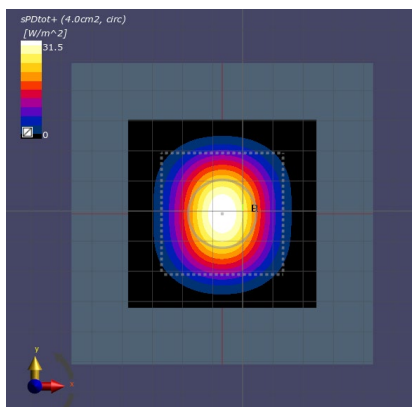
Software	Software Version
cDASY6 Module mmWave	2.4.2.62

## Scans Setup

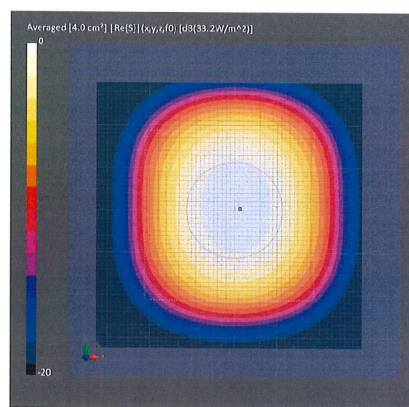
Scan Type	5G Scan
Grid Extents [mm]	60.0 x 60.0
Grid Steps [lambda]	0.25 x 0.25
Sensor Surface [mm]	5.55

## Measurement Results

Scan Type	5G Scan
Avg. Area [cm <sup>2</sup> ]	4.00
pS <sub>tot</sub> avg [W/m <sup>2</sup> ]	31.5
pS <sub>n</sub> avg [W/m <sup>2</sup> ]	31.0
E <sub>peak</sub> [V/m]	126.0
Deviation (dB)	-0.23



30 GHz System Verification



Calibration Certificate

# PCTEST

Date: 11/15/2021

30 GHz System Verification

## Device Under Test Properties

DUT	Serial Number
30 GHz Verification Source	1035

## Exposure Conditions

Phantom Section	Position	Test Distance [mm]	Band	Frequency [MHz]
5G	FRONT	5.55	Validation band	30000.00

## Hardware Setup

Probe, Calibration Date	DAE, Calibration Date
EUmmWV3 - SN9364, 06/21/2021	DAE4 SN1582, 04/07/2021

## Software Setup

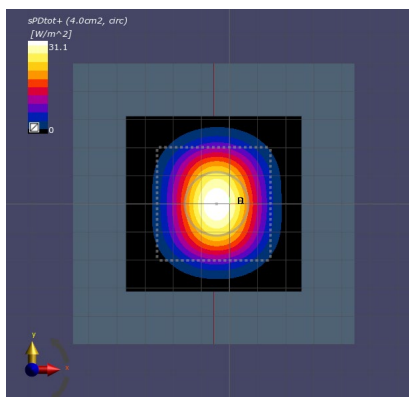
Software	Software Version
cDASY6 Module mmWave	2.4.2.62

## Scans Setup

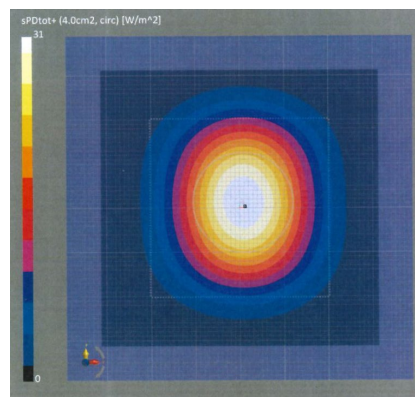
Scan Type	5G Scan
Grid Extents [mm]	60.0 x 60.0
Grid Steps [lambda]	0.25 x 0.25
Sensor Surface [mm]	5.55

## Measurement Results

Scan Type	5G Scan
Avg. Area [cm <sup>2</sup> ]	4.00
pS <sub>tot</sub> avg [W/m <sup>2</sup> ]	31.1
pS <sub>n</sub> avg [W/m <sup>2</sup> ]	30.7
E <sub>peak</sub> [V/m]	131.0
Deviation (dB)	0.01



30 GHz System Verification



Calibration Certificate