

APPENDIX A: POWER DENSITY TEST PLOTS

PCTEST

Date: 10/19/2021

Antenna M; Beam 156; H; High Ch.; CW

Device Under Test Properties

DUT	Serial Number	DUT Type
A3LSMS908U	UI21148M	Portable Handset

Exposure Conditions

Phantom Section	Position	Test Distance [mm]	Band	Frequency [MHz]
5G	BACK	2.00	n258	25200.00

Hardware Setup

Probe, Calibration Date	DAE, Calibration Date
EUmmWV3 - SN9389, 11/16/2020	DAE4ip SN1638, 11/17/2020

Software Setup

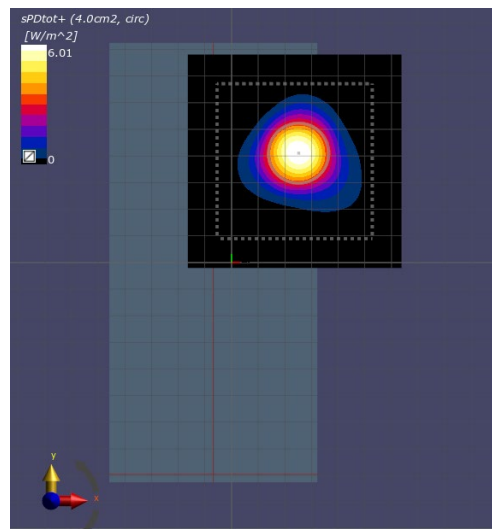
Software	Software Version
cDASY6 Module mmWave	2.4.2.62

Scans Setup

Scan Type	5G Scan
Grid Extents [mm]	80x80
Grid Steps [lambda]	0.25 x 0.25
Sensor Surface [mm]	2.0

Measurement Results

Scan Type	5G Scan
Avg. Area [cm ²]	4.00
pS _{tot} avg [W/m ²]	6.01
pS _n avg [W/m ²]	4.39
E _{peak} [V/m]	77.1
Power Drift [dB]	-0.05



PCTEST

Date: 10/21/2021

Antenna N; Beam 157; H; Low Ch.; CW

Device Under Test Properties

DUT	Serial Number	DUT Type
A3LSMS908U	UI21148M	Portable Handset

Exposure Conditions

Phantom Section	Position	Test Distance [mm]	Band	Frequency [MHz]
5G	BACK	2.00	n258	24350.00

Hardware Setup

Probe, Calibration Date	DAE, Calibration Date
EUmWV3 - SN9389, 11/16/2020	DAE4ip SN1638, 11/17/2020

Software Setup

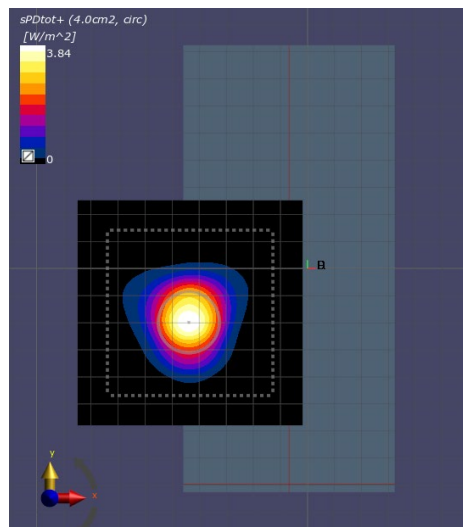
Software	Software Version
cDASY6 Module mmWave	2.4.2.62

Scans Setup

Scan Type	5G Scan
Grid Extents [mm]	80x80
Grid Steps [lambda]	0.25 x 0.25
Sensor Surface [mm]	2.0

Measurement Results

Scan Type	5G Scan
Avg. Area [cm ²]	4.00
pS _{tot} avg [W/m ²]	3.84
pS _n avg [W/m ²]	3.25
E _{peak} [V/m]	60.7
Power Drift [dB]	-0.03



PCTEST

Date: 10/26/2021

Antenna M; Beam 25; V; Low Ch.; CW

Device Under Test Properties

DUT	Serial Number	DUT Type
A3LSMS908U	UI21148M	Portable Handset

Exposure Conditions

Phantom Section	Position	Test Distance [mm]	Band	Frequency [MHz]
5G	BACK	2.00	n261	27550.10

Hardware Setup

Probe, Calibration Date	DAE, Calibration Date
EUmmWV3 - SN9389, 11/16/2020	DAE4ip SN1638, 11/17/2020

Software Setup

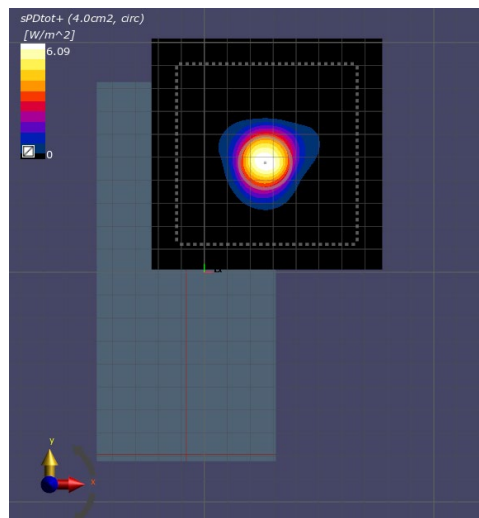
Software	Software Version
cDASY6 Module mmWave	2.4.2.62

Scans Setup

Scan Type	5G Scan
Grid Extents [mm]	100x100
Grid Steps [lambda]	0.25 x 0.25
Sensor Surface [mm]	2.0

Measurement Results

Scan Type	5G Scan
Avg. Area [cm ²]	4.00
pS _{tot} avg [W/m ²]	6.09
pS _n avg [W/m ²]	4.73
E _{peak} [V/m]	82.5
Power Drift [dB]	0.08



PCTEST

Date: 10/26/2021

Antenna N; Beam 161; H; High Ch.; CW

Device Under Test Properties

DUT	Serial Number	DUT Type
A3LSMS908U	UI21148M	Portable Handset

Exposure Conditions

Phantom Section	Position	Test Distance [mm]	Band	Frequency [MHz]
5G	BACK	2.00	n261	28300.00

Hardware Setup

Probe, Calibration Date	DAE, Calibration Date
EUMmWV3 - SN9389, 11/16/2020	DAE4ip SN1638, 11/17/2020

Software Setup

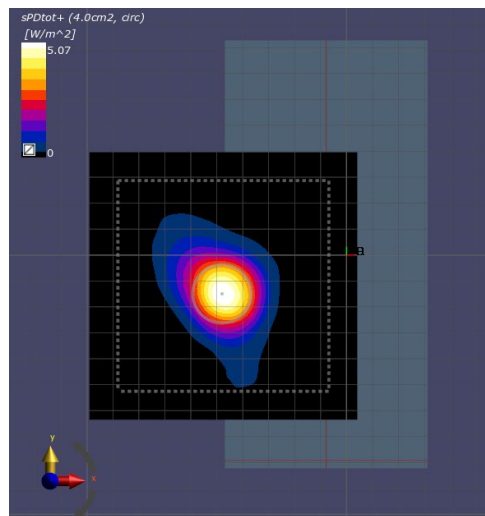
Software	Software Version
cDASY6 Module mmWave	2.4.2.62

Scans Setup

Scan Type	5G Scan
Grid Extents [mm]	100x100
Grid Steps [lambda]	0.25 x 0.25
Sensor Surface [mm]	2.0

Measurement Results

Scan Type	5G Scan
Avg. Area [cm ²]	4.00
pS _{tot} avg [W/m ²]	5.07
pS _n avg [W/m ²]	3.96
E _{peak} [V/m]	74.1
Power Drift [dB]	0.04



PCTEST

Date: 10/21/2021

Antenna M; Beam 156; H; High Ch.; CW

Device Under Test Properties

DUT	Serial Number	DUT Type
A3LSMS908U	UI21148M	Portable Handset

Exposure Conditions

Phantom Section	Position	Test Distance [mm]	Band	Frequency [MHz]
5G	BACK	2.00	n260	39949.90

Hardware Setup

Probe, Calibration Date	DAE, Calibration Date
EUmmWV3 - SN9389, 11/16/2020	DAE4ip SN1638, 11/17/2020

Software Setup

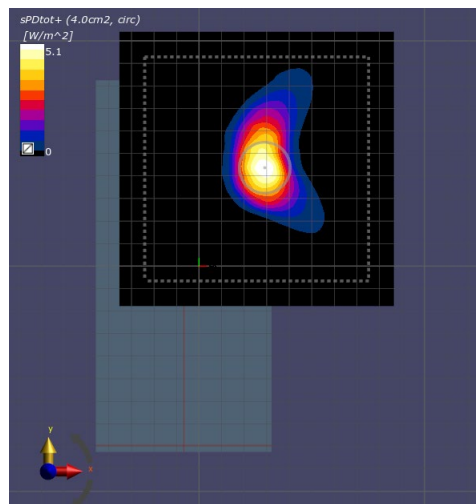
Software	Software Version
cDASY6 Module mmWave	2.4.2.62

Scans Setup

Scan Type	5G Scan
Grid Extents [mm]	120x120
Grid Steps [lambda]	0.25 x 0.25
Sensor Surface [mm]	2.0

Measurement Results

Scan Type	5G Scan
Avg. Area [cm ²]	4.00
pS _{tot} avg [W/m ²]	5.10
pS _n avg [W/m ²]	3.89
E _{peak} [V/m]	90.6
Power Drift [dB]	0.16



PCTEST

Date: 10/26/2021

Antenna N; Beam 40/168; MIMO; Low Ch.; CW

Device Under Test Properties

DUT	Serial Number	DUT Type
A3LSMS908U	JI21164M	Portable Handset

Exposure Conditions

Phantom Section	Position	Test Distance [mm]	Band	Frequency [MHz]
5G	RIGHT	2.00	n260	37050.00

Hardware Setup

Probe, Calibration Date	DAE, Calibration Date
EUmmWV4 - SN9523, 01/11/2021	DAE4ip SN1639, 11/17/2020

Software Setup

Software	Software Version
cDASY6 Module mmWave	2.4.2.62

Scans Setup

Scan Type	5G Scan
Grid Extents [mm]	120x120
Grid Steps [lambda]	0.25 x 0.25
Sensor Surface [mm]	2.0

Measurement Results

Scan Type	5G Scan
Avg. Area [cm ²]	4.00
pS _{tot} avg [W/m ²]	5.01
pS _n avg [W/m ²]	4.48
E _{peak} [V/m]	83.7
Power Drift [dB]	-0.01

