

Measurement Report for Device, CHEEK, U-NII-8, UID 10743 AAC, Channel 207 (6985.0MHz)

Exposure Conditions

Phantom Section, TSL	Position, Test Distance [mm]	Band	Group, UID	Frequency [MHz], Channel Number	Conversion Factor	TSL Conductivity [S/m]	TSL Permittivity
RightHead, HSL	CHEEK, 0.00	U-NII-8	WLAN,10743-AAC	6985.0,207	5.25	6.67	33.3

Hardware Setup

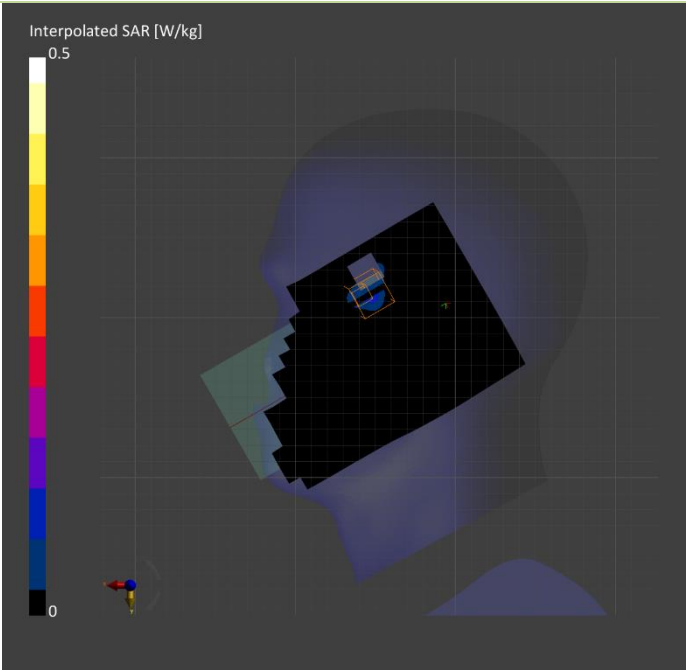
Phantom	TSL, Measured Date	Probe, Calibration Date	DAE, Calibration Date
Twin-SAM V8.0 (30deg probe tilt) - 2044	HBBL-600-10000 Charge:xxxx, 2021-Oct-28	EX3DV4 - SN7545, 2021-08-26	DAE4 Sn1668, 2021-04-08

Scan Setup

	Area Scan	Zoom Scan
Grid Extents [mm]	119.0 x 204.0	22.0 x 22.0 x 22.0
Grid Steps [mm]	8.5 x 8.5	3.4 x 3.4 x 1.4
Sensor Surface [mm]	3.0	1.4

Measurement Results

	Area Scan	Zoom Scan
Date	2021-10-28	2021-10-28
psSAR1g [W/kg]	0.076	0.080
psSAR10g [W/kg]	0.025	0.028
sPDab (4.0cm2, sq) [W/m2]		0.676
Power Drift [dB]	0.35	-0.09



Measurement Report for Device, BACK, U-NII-7, UID 10743 AAC, Channel 143 (6665.0MHz)  
Device under Test Properties

Exposure Conditions

Phantom Section, TSL	Position, Test Distance [mm]	Band	Group, UID	Frequency [MHz], Channel Number	Conversion Factor	TSL Conductivity [S/m]	TSL Permittivity
Flat, HSL	BACK, 15.00	U-NII-7	WLAN,10743-AAC	6665.0,143	5.25	6.42	33.6

Hardware Setup

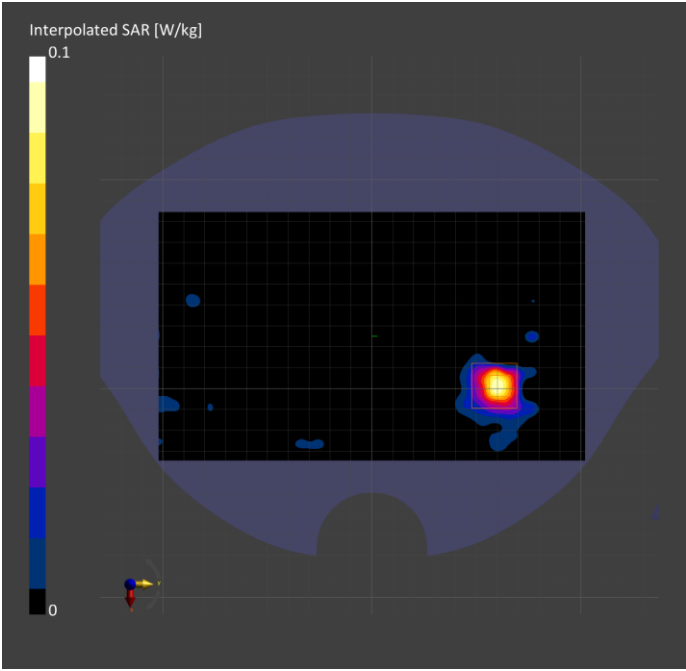
Phantom	TSL, Measured Date	Probe, Calibration Date	DAE, Calibration Date
Twin-SAM V8.0 (30deg probe tilt) - 2044	HBBL-600-10000 Charge:xxxx, 2021-Oct-27	EX3DV4 - SN7545, 2021-08-26	DAE4 Sn1668, 2021-04-08

Scan Setup

	Area Scan	Zoom Scan
Grid Extents [mm]	119.0 x 204.0	22.0 x 22.0 x 22.0
Grid Steps [mm]	8.5 x 8.5	3.4 x 3.4 x 1.4
Sensor Surface [mm]	3.0	1.4

Measurement Results

	Area Scan	Zoom Scan
Date	2021-10-27	2021-10-27
psSAR1g [W/kg]	0.070	0.085
psSAR10g [W/kg]	0.021	0.025
psPDab (4.0cm2, sq) [W/m2]		0.572
Power Drift [dB]	-0.27	-0.16



Measurement Report for Device, BACK, U-NII-7, UID 10743 AAC, Channel 143 (6665.0MHz)

Exposure Conditions

Phantom Section, TSL	Position, Test Distance [mm]	Band	Group, UID	Frequency [MHz], Channel Number	Conversion Factor	TSL Conductivity [S/m]	TSL Permittivity
Flat, HSL	BACK, 0.00	U-NII-7	WLAN, 10743-AAC	6665.0, 143	5.25	6.42	33.6

Hardware Setup

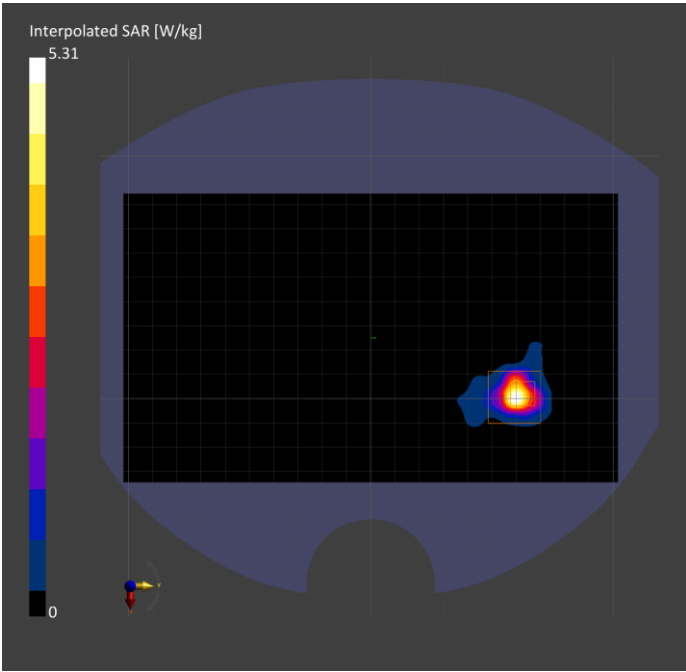
Phantom	TSL, Measured Date	Probe, Calibration Date	DAE, Calibration Date
Twin-SAM V8.0 (30deg probe tilt) - 2044	HBBL-600-10000 Charge:xxxx, 2021-Oct-27	EX3DV4 - SN7545, 2021-08-26	DAE4 Sn1668, 2021-04-08

Scan Setup

	Area Scan	Zoom Scan
Grid Extents [mm]	119.0 x 204.0	22.0 x 22.0 x 22.0
Grid Steps [mm]	8.5 x 8.5	3.4 x 3.4 x 1.4
Sensor Surface [mm]	3.0	1.4

Measurement Results

	Area Scan	Zoom Scan
Date	2021-10-27, 04:15	2021-10-27, 04:26
psSAR1g [W/kg]	0.698	0.871
psSAR10g [W/kg]	0.168	0.180
psPDab (4.0cm2, sq) [W/m2]		4.29
Power Drift [dB]	0.05	-0.04



Measurement Report for Device, BACK, U-NII-6, UID 10743 AAC, Channel 111 (6505.0MHz)

Exposure Conditions

Phantom Section, TSL	Position, Test Distance [mm]	Band	Group, UID	Frequency [MHz], Channel Number	Conversion Factor	TSL Conductivity [S/m]	TSL Permittivity
Flat, HSL	BACK, 15.00	U-NII-6	WLAN,10743-AAC	6505.0,111	5.25	6.20	33.9

Hardware Setup

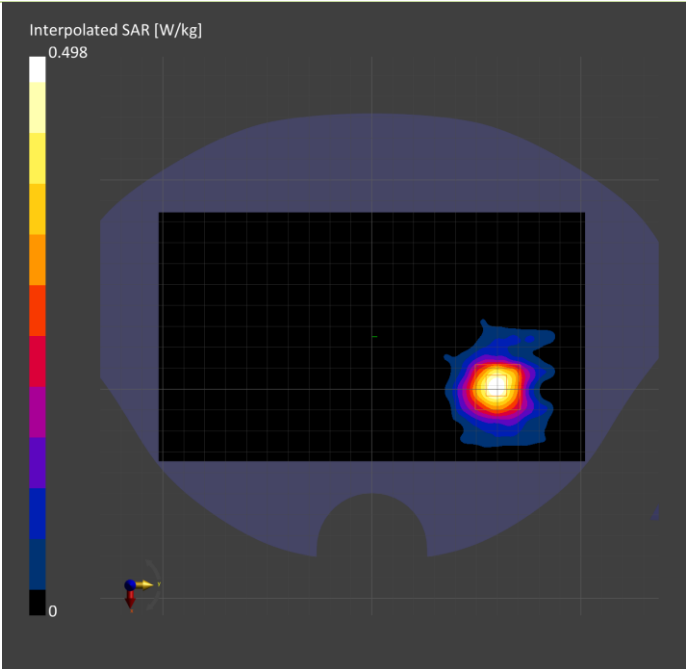
Phantom	TSL, Measured Date	Probe, Calibration Date	DAE, Calibration Date
Twin-SAM V8.0 (30deg probe tilt) - 2044	HBBL-600-10000 Charge:xxxx, 2021-Oct-27	EX3DV4 - SN7545, 2021-08-26	DAE4 Sn1668, 2021-04-08

Scan Setup

	Area Scan	Zoom Scan
Grid Extents [mm]	119.0 x 204.0	22.0 x 22.0 x 22.0
Grid Steps [mm]	8.5 x 8.5	3.4 x 3.4 x 1.4
Sensor Surface [mm]	3.0	1.4

Measurement Results

	Area Scan	Zoom Scan
Date	2021-10-27	2021-10-27
psSAR1g [W/kg]	0.101	0.112
psSAR10g [W/kg]	0.036	0.040
psPDab (4.0cm2, sq) [W/m2]		0.898
Power Drift [dB]	-0.10	-0.16



Measurement Report for Device, BACK, U-NII-6, UID 10743 AAC, Channel 111 (6505.0MHz)

Exposure Conditions

Phantom Section, TSL	Position, Test Distance [mm]	Band	Group, UID	Frequency [MHz], Channel Number	Conversion Factor	TSL Conductivity [S/m]	TSL Permittivity
Flat, HSL	BACK, 0.00	U-NII-6	WLAN,10743-AAC	6505.0,111	5.25	6.20	33.9

Hardware Setup

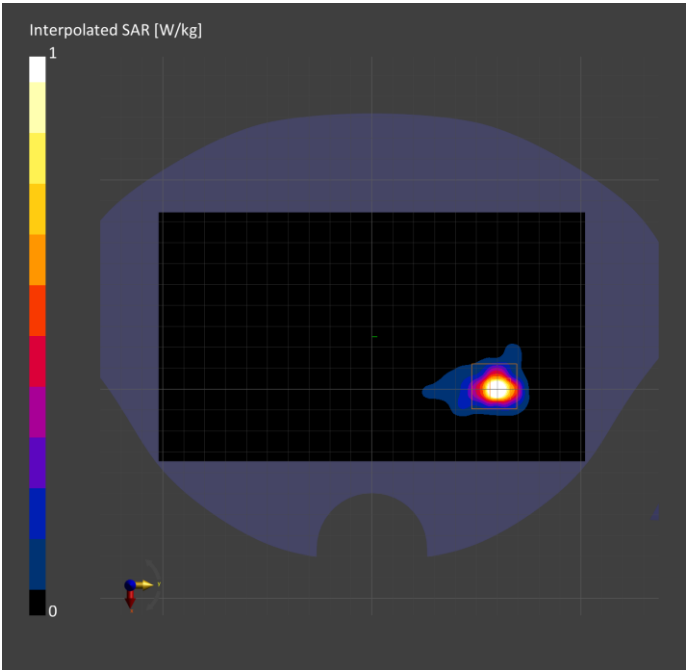
Phantom	TSL, Measured Date	Probe, Calibration Date	DAE, Calibration Date
Twin-SAM V8.0 (30deg probe tilt) - 2044	HBBL-600-10000 Charge:xxxx, 2021-Oct-27	EX3DV4 - SN7545, 2021-08-26	DAE4 Sn1668, 2021-04-08

Scan Setup

	Area Scan	Zoom Scan
Grid Extents [mm]	119.0 x 204.0	22.0 x 22.0 x 22.0
Grid Steps [mm]	8.5 x 8.5	3.4 x 3.4 x 1.4
Sensor Surface [mm]	3.0	1.4

Measurement Results

	Area Scan	Zoom Scan
Date	2021-10-27	2021-10-27
psSAR1g [W/kg]	0.839	0.949
psSAR10g [W/kg]	0.197	0.202
psPDab (4.0cm2, sq) [W/m2]		4.81
Power Drift [dB]	-0.16	-0.12



Measurement Report for Device, BACK, U-NII-6, UID 10743 AAC, Channel 111 (6505.0MHz)

Exposure Conditions

Phantom Section	Position, Test Distance [mm]	Band	Group, UID	Frequency [MHz], Channel Number	Conversion Factor
5G Air	BACK, 2.00	U-NII-6	WLAN, 10743-AAC	6505.0, 111	1.0

Hardware Setup

Phantom	Medium	Probe, Calibration Date	DAE, Calibration Date
mmWave- xxxx	Air---	EUmmWV4 - SN9559_F1-55GHz, 2021-04-01	DAE4 Sn1667, 2021-04-08

Scan Setup

	5G Scan
Grid Extents [mm]	120.0 x 120.0
Grid Steps [lambda]	0.05 x 0.05
Sensor Surface [mm]	2.0
MAIA	N/A

Measurement Results

	5G Scan
Date	2021-11-11, 08:56
Avg. Area [cm²]	4.00
psPDn+ [W/m²]	1.21
psPDtot+ [W/m²]	1.29
psPDmod+ [W/m²]	1.47
iPD	0.827
E <sub>max</sub> [V/m]	35.2
Power Drift [dB]	-0.07

