

## APPENDIX A: POWER DENSITY TEST PLOTS

Date: 2023-07-25

Antenna K Beam 15

### Device Under Test Properties

DUT	Serial Number	DUT Type
A3LSMS711U	WGI0067M	Portable Handset

### Exposure Conditions

Phantom Section	Position	Test Distance [mm]	Band	Frequency [MHz]
5G	EDGE LEFT	2.00	CW	25200.0

### Hardware/Software Setup

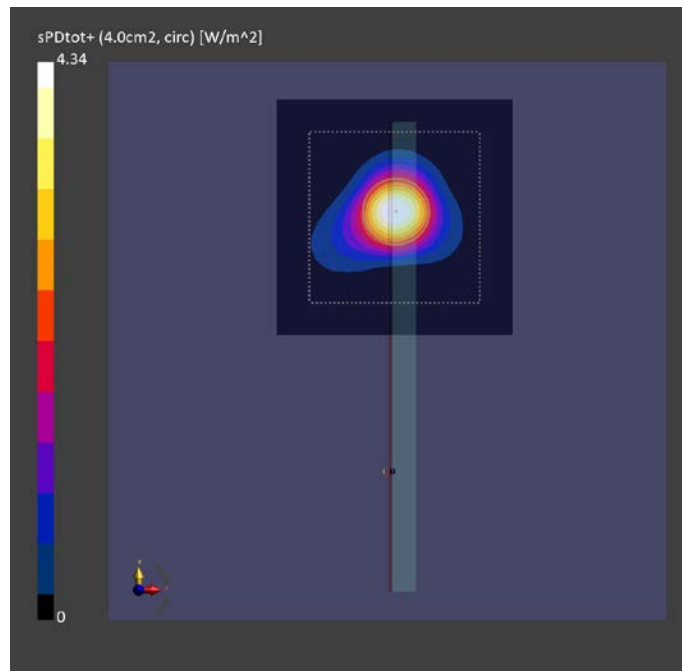
Probe, Calibration Date	DAE, Calibration Date	Software	Software Version
EUmmWV4 - SN9622, 2023-02-15	DAE4ip - SN1639, 2022-11-16	cDASY6 Module mmWave	3.2.0.1840

### Scans Setup

Scan Type	5G Scan
Grid Extents [mm]	80.0 x 80.0
Grid Steps [lambda]	0.25 x 0.25
Sensor Surface [mm]	2.0

### Measurement Results

Scan Type	5G Scan
Avg. Area [cm <sup>2</sup> ]	4.00
pS <sub>tot</sub> avg [W/m <sup>2</sup> ]	4.34
pS <sub>n</sub> avg [W/m <sup>2</sup> ]	3.18
E <sub>peak</sub> [V/m]	69.0
Power Drift [dB]	-0.06



Date: 2023-07-25

Antenna K Beam 20

### Device Under Test Properties

DUT	Serial Number	DUT Type
A3LSMS711U	WGI0067M	Portable Handset

### Exposure Conditions

Phantom Section	Position	Test Distance [mm]	Band	Frequency [MHz]
5G	EDGE LEFT	2.00	CW	27550.1

### Hardware/Software Setup

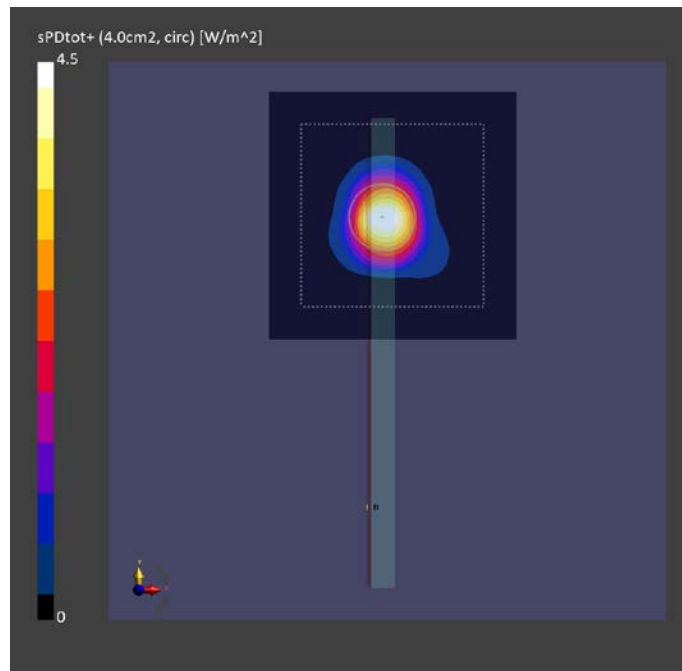
Probe, Calibration Date	DAE, Calibration Date	Software	Software Version
EUmmWV4 - SN9622, 2023-02-15	DAE4ip - SN1639, 2022-11-16	cDASY6 Module mmWave	3.2.0.1840

### Scans Setup

Scan Type	5G Scan
Grid Extents [mm]	80.0 x 80.0
Grid Steps [lambda]	0.25 x 0.25
Sensor Surface [mm]	2.0

### Measurement Results

Scan Type	5G Scan
Avg. Area [cm <sup>2</sup> ]	4.00
pS <sub>tot</sub> avg [W/m <sup>2</sup> ]	4.50
pS <sub>n</sub> avg [W/m <sup>2</sup> ]	3.33
E <sub>peak</sub> [V/m]	84.2
Power Drift [dB]	0.04



Date: 2023-07-25

Antenna K Beam 147

### Device Under Test Properties

DUT	Serial Number	DUT Type
A3LSMS711U	WGI0067M	Portable Handset

### Exposure Conditions

Phantom Section	Position	Test Distance [mm]	Band	Frequency [MHz]
5G	EDGE LEFT	2.00	CW	39949.9

### Hardware/Software Setup

Probe, Calibration Date	DAE, Calibration Date	Software	Software Version
EUmmWV4 - SN9622, 2023-02-15	DAE4ip - SN1639, 2022-11-16	cDASY6 Module mmWave	3.2.0.1840

### Scans Setup

Scan Type	5G Scan
Grid Extents [mm]	60.0 x 60.0
Grid Steps [lambda]	0.25 x 0.25
Sensor Surface [mm]	2.0

### Measurement Results

Scan Type	5G Scan
Avg. Area [cm <sup>2</sup> ]	4.00
pS <sub>tot</sub> avg [W/m <sup>2</sup> ]	4.73
pS <sub>n</sub> avg [W/m <sup>2</sup> ]	3.73
E <sub>peak</sub> [V/m]	91.1
Power Drift [dB]	0.00

