

APPENDIX A: TEST PLOTS

ELEMENT

DUT: A3LSMS711U; Type: Portable Handset; Serial: 29658

Communication System: UID:10731 - AAC, WLAN; MAIA: Y; Frequency: 6305.0 MHz
Medium: 6000 Head; Medium parameters used:
f = 6305.0 MHz; cond = 6.01 S/m; perm = 34.0; density = 1000 kg/m³
Phantom Section: RightHead; Space: 0.00 mm

Test Date: 07/31/2023; Ambient Temp: 22.0°C; Tissue Temp: 21.5°C

Probe: EX3DV4 - SN7718; ConvF:(5.15,5.15,5.15); Calibrated: 2023-04-18
Sensor-Surface: 1.4mm (VMS + 6p)
Electronics: DAE4 Sn1368; Calibrated: 2023-04-14
Phantom: Twin-SAM V5.0; Serial: 1759
Measurement SW: DASY Module SAR V16.2.0.1425

**Mode: IEEE 802.11ax, 80 MHz Bandwidth, UNII-5, MIMO,
Ch. 71, Right Head, Cheek, 68.1 Mbps**

Area Scan (119.0 x 204.0): Measurement grid: dx=8.5 mm, dy=8.5 mm

Zoom Scan (22.0 x 22.0 x 22.0): Measurement grid: dx=2.6 mm, dy=2.6 mm, dz=1.2 mm; Graded
Ratio: 1.2

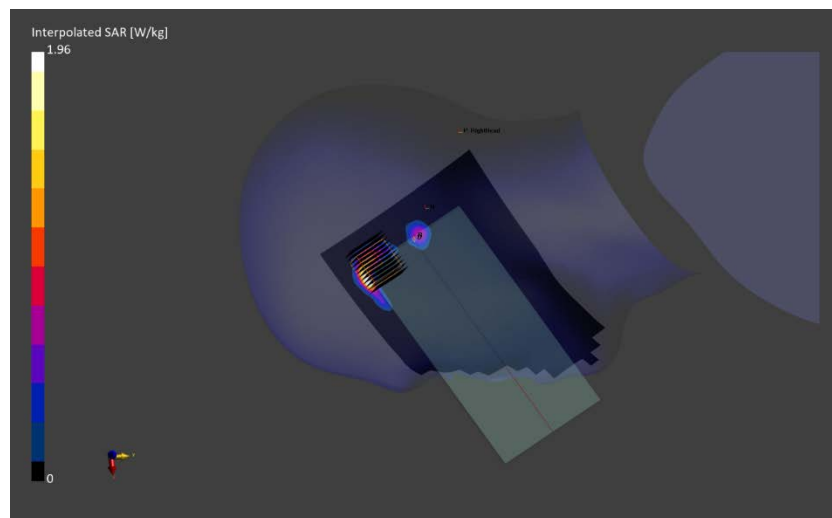
Reference Value = 0.00 W/kg; Power Drift = 0.16 dB

Peak SAR (extrapolated) = 1.96 W/kg

SAR(1 g) = 0.237 W/kg; APD(4 cm²) = 1.49 W/m²

Smallest distance from peaks to all points 3 dB below is 2.7 mm

Ratio of SAR at M2 to SAR at M1 = 57.6 %



ELEMENT

DUT: A3LSMS711U; Type: Portable Handset; Serial: 29658

Communication System: UID:10731 - AAC, WLAN; MAIA: Y; Frequency: 6545.0 MHz
Medium: 6000 Head; Medium parameters used:
f = 6545.0 MHz; cond = 6.20 S/m; perm = 33.9; density = 1000 kg/m³
Phantom Section: Flat; Space: 10.00 mm

Test Date: 07/19/2023; Ambient Temp: 23.2°C; Tissue Temp: 22.5°C

Probe: EX3DV4 - SN7718; ConvF:(5.15,5.15,5.15); Calibrated: 2023-04-18
Sensor-Surface: 1.4mm (VMS + 6p)
Electronics: DAE4 Sn1368; Calibrated: 2023-04-14
Phantom: Twin-SAM V5.0; Serial: 1759
Measurement SW: DASY Module SAR V16.2.0.1425

**Mode: IEEE 802.11ax, 80 MHz Bandwidth, UNII-7, MIMO,
Ch. 119, Body SAR, Back Side, 68.1 Mbps**

Area Scan (119.0 x 204.0): Measurement grid: dx=8.5 mm, dy=8.5 mm

Zoom Scan (27.2 x 27.2 x 22.0): Measurement grid: dx=3.4 mm, dy=3.4 mm, dz=1.4 mm; Graded
Ratio: 1.4

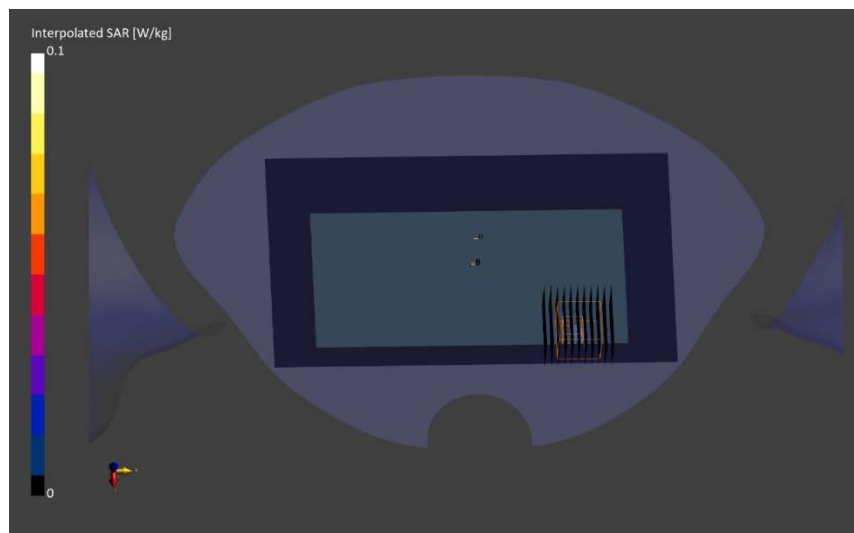
Reference Value = -0.00 W/kg; Power Drift = 0.17 dB

Peak SAR (extrapolated) = 0.079 W/kg

SAR(1 g) = 0.012 W/kg; APD(4 cm²) = 0.091 W/m²

Smallest distance from peaks to all points 3 dB below is 2.8 mm

Ratio of SAR at M2 to SAR at M1 = 88.6 %



ELEMENT

DUT: A3LSMS711U; Type: Portable Handset; Serial: 29658

Communication System: UID:10731 - AAC, WLAN; MAIA: Y; Frequency: 6305.0 MHz
Medium: 6000 Head; Medium parameters used:
f = 6305.0 MHz; cond = 5.94 S/m; perm = 34.1; density = 1000 kg/m³
Phantom Section: Flat; Space: 0.00 mm

Test Date: 07/24/2023; Ambient Temp: 23.5°C; Tissue Temp: 22.0°C

Probe: EX3DV4 - SN7718; ConvF:(5.15,5.15,5.15); Calibrated: 2023-04-18
Sensor-Surface: 1.4mm (All points)
Electronics: DAE4 Sn1368; Calibrated: 2023-04-14
Phantom: Twin-SAM V5.0; Serial: 1759
Measurement SW: DASY Module SAR V16.2.0.1425

**Mode: IEEE 802.11ax, 80 MHz Bandwidth, UNII-5, MIMO,
Ch. 71, Phablet SAR, Front Side, 68.1 Mbps**

Area Scan (119.0 x 204.0): Measurement grid: dx=8.5 mm, dy=8.5 mm

Zoom Scan (22.0 x 22.0 x 22.0): Measurement grid: dx=2.6 mm, dy=2.6 mm, dz=1.2 mm; Graded
Ratio: 1.2

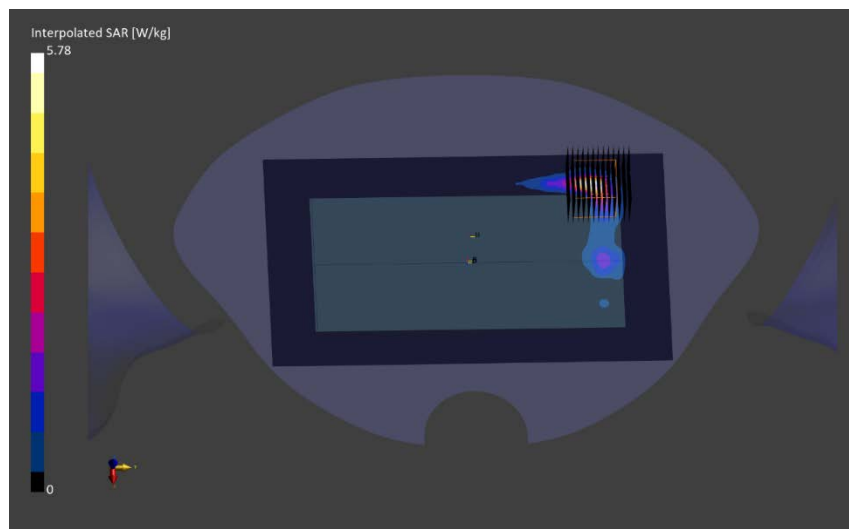
Reference Value = 0.23 W/kg; Power Drift = -0.11 dB

Peak SAR (extrapolated) = 5.78 W/kg

SAR(10 g) = 0.212 W/kg; APD(4 cm²) = 4.96 W/m²

Smallest distance from peaks to all points 3 dB below is 3.4 mm

Ratio of SAR at M2 to SAR at M1 = 52.9 %



Date: 2023-07-10

MIMO channel 215

Device Under Test Properties

DUT	Serial Number	DUT Type
A3LSMS711U	05709	Portable Handset

Exposure Conditions

Phantom Section	Position	Test Distance [mm]	Band	Frequency [MHz]
5G	EDGE LEFT	2.00	IEEE 802.11ax (80MHz, MCS0, 99pc duty cycle)	7025.0

Hardware/Software Setup

Probe, Calibration Date	DAE, Calibration Date	Software	Software Version
EUmmWV3 - SN9407, 2022-10-17	DAE4ip - SN1638, 2022-10-13	cDASY6 Module mmWave	3.2.0.1840

Scans Setup

Scan Type	5G Scan
Grid Extents [mm]	80.0 x 80.0
Grid Steps [lambda]	0.125 x 0.125
Sensor Surface [mm]	2.0

Measurement Results

Scan Type	5G Scan
Avg. Area [cm ²]	4.00
pS _{tot} avg [W/m ²]	3.00
pS _n avg [W/m ²]	1.99
E _{peak} [V/m]	52.2
Power Drift [dB]	-0.06

