

APPENDIX A: VERIFICATION PLOTS

ELEMENT

DUT: Dipole 2450.0 MHz; Type: D2450V2 - SN981

Communication System: UID: 0, CW; Frequency: 2450.0 MHz
Medium: 2450 Head; Medium parameters used:
f = 2450.0 MHz; cond = 1.83 S/m; perm = 40.7; density = 1000 kg/m³
Phantom Section: Flat; Space: 10 mm

Test Date: 08/01/2023; Ambient Temp: 22.2-C; Tissue Temp: 20.5-C

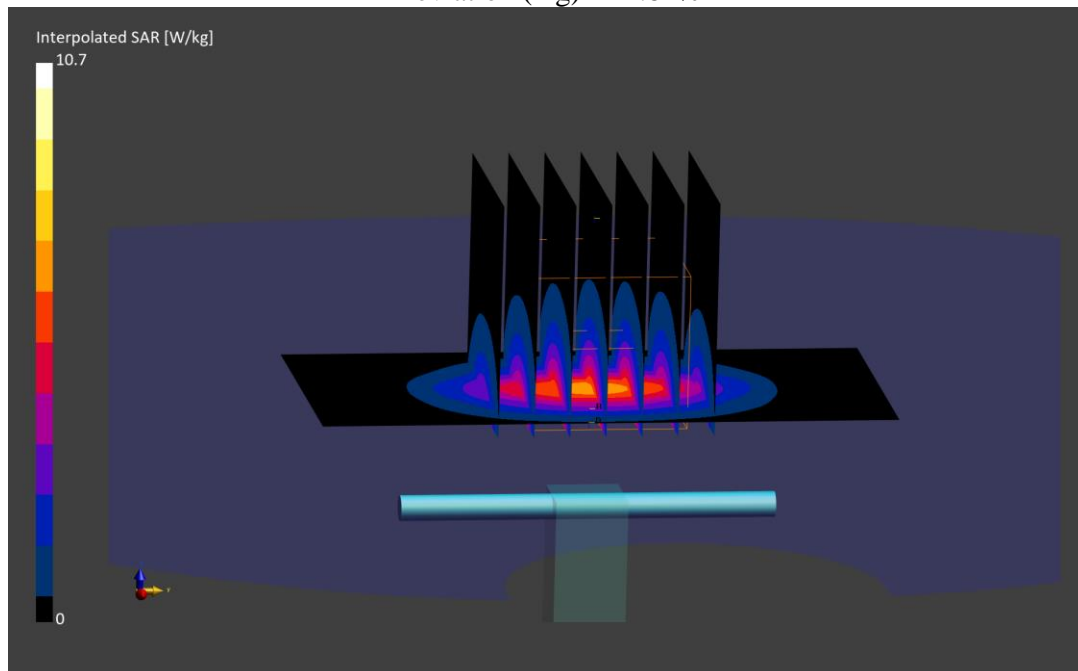
Probe: EX3DV4 - SN7670; ConvF:(7.94,7.94,7.94); Calibrated: 2022-08-22
Sensor-Surface: 1.4mm (VMS + 6p)
Electronics: DAE4 Sn1681; Calibrated: 2022-08-15
Phantom: Twin-SAM V8.0 (Left); Serial: 1964
Measurement SW: DASY Module SAR V16.2.0.1425

2450 MHz System Verification at 20 dBm (100 mW)

Area Scan (40.0 x 80.0): Measurement grid: dx=10.0 mm, dy=10.0 mm

Zoom Scan (30.0 x 30.0 x 30.0): Measurement grid: dx=5.0 mm, dy=5.0 mm, dz=1.5 mm; Graded
Ratio: 1.5

Peak SAR (extrapolated) = 10.7 W/kg
SAR(1 g) = 5.13 W/kg; SAR(10 g) = 2.38 W/kg
Deviation (1 g) = -4.82%



ELEMENT

DUT: Dipole 5250.0 MHz; Type: D5GHzV2 - SN1191

Communication System: UID: 0, CW; Frequency: 5250.0 MHz
Medium: 5200-5800 Head; Medium parameters used:
f = 5250.0 MHz; cond = 4.56 S/m; perm = 35.9; density = 1000 kg/m³
Phantom Section: Flat; Space: 10 mm

Test Date: 08/01/2023; Ambient Temp: 19.30-C; Tissue Temp: 20.40-C

Probe: EX3DV4 - SN7417; ConvF:(5.61,5.61,5.61); Calibrated: 2023-02-08
Sensor-Surface: 1.4mm (VMS + 6p)
Electronics: DAE4 Sn665; Calibrated: 2023-02-15
Phantom: Twin-SAM V5.0; Serial: 1757
Measurement SW: DASY Module SAR V16.2.0.1425

5250 MHz System Verification at 17 dBm (50 mW)

Area Scan (40.0 x 80.0): Measurement grid: dx=10.0 mm, dy=10.0 mm

Zoom Scan (22.0 x 22.0 x 22.0): Measurement grid: dx=4.0 mm, dy=4.0 mm, dz=1.4 mm; Graded
Ratio: 1.4

Peak SAR (extrapolated) = 15.1 W/kg
SAR(1 g) = 3.74 W/kg; SAR(10 g) = 1.05 W/kg
Deviation (1 g) = -6.97%

