

20170206_SystemPerformanceCheck-D2450V2 SN 939

Frequency: 2450 MHz; Duty Cycle: 1:1; Room Ambient Temperature: 23.0°C; Liquid Temperature: 22.0°C
 Medium parameters used: $f = 2450$ MHz; $\sigma = 2.004$ S/m; $\epsilon_r = 51.879$; $\rho = 1000$ kg/m³

DASY5 Configuration:

- Area Scan Setting: Find Secondary Maximum Within: 2.0 dB and with a peak SAR value greater than 0.0012W/kg
- Averaged Fast SAR: Polynomial fit
- Electronics: DAE4 Sn1447; Calibrated: 2016-09-19
- Probe: EX3DV4 - SN7376; ConvF(7.62, 7.62, 7.62); Calibrated: 2016-08-30;
- Sensor-Surface: 2.5mm (Mechanical Surface Detection)
- Phantom: ELI V6.0 (20deg); Type: QD OVA 003 AA; Serial: 2013

Body/Pin=100 mW/Area Scan (8x8x1): Measurement grid: dx=12mm, dy=12mm

Maximum value of SAR (measured) = 4.95 W/kg

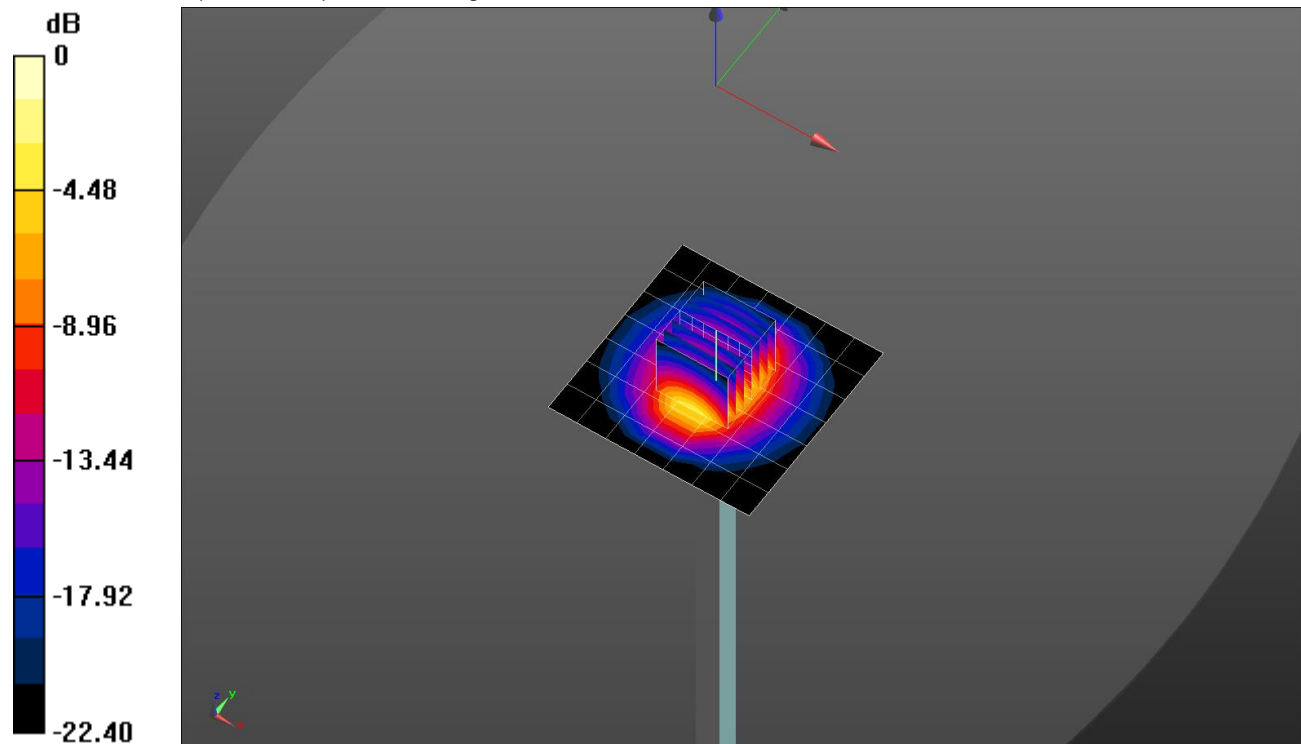
Body/Pin=100 mW/Zoom Scan (7x7x7)/Cube 0: Measurement grid: dx=5mm, dy=5mm, dz=5mm

Reference Value = 60.70 V/m; Power Drift = -0.03 dB

Peak SAR (extrapolated) = 10.7 W/kg

SAR(1 g) = 5.06 W/kg; SAR(10 g) = 2.3 W/kg

Maximum value of SAR (measured) = 7.27 W/kg

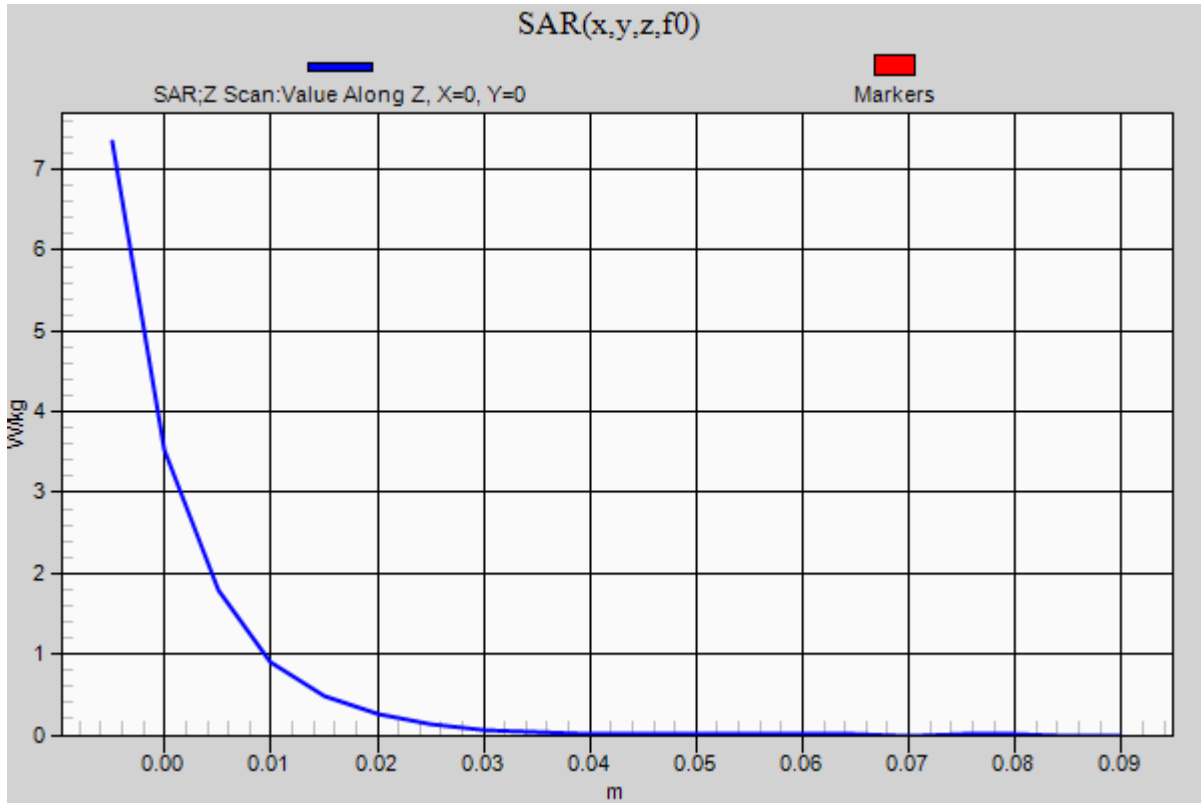


0 dB = 7.27 W/kg = 8.62 dBW/kg

20170206_SystemPerformanceCheck-D2450V2 SN 939

Frequency: 2450 MHz; Duty Cycle: 1:1

Body/Pin=100 mW/Z Scan (1x1x21): Measurement grid: dx=20mm, dy=20mm, dz=5mm
Maximum value of SAR (measured) = 7.34 W/kg



20170207_SystemPerformanceCheck-D750V2 SN 1122

Frequency: 750 MHz; Duty Cycle: 1:1; Room Ambient Temperature: 23.0°C; Liquid Temperature: 22.0°C
 Medium parameters used: $f = 750 \text{ MHz}$; $\sigma = 0.961 \text{ S/m}$; $\epsilon_r = 54.58$; $\rho = 1000 \text{ kg/m}^3$

DASY5 Configuration:

- Area Scan Setting: Find Secondary Maximum Within: 2.0 dB and with a peak SAR value greater than 0.0012W/kg
- Averaged Fast SAR: Polynomial fit
- Electronics: DAE4 Sn1468; Calibrated: 2016-09-08
- Probe: EX3DV4 - SN7330; ConvF(10.11, 10.11, 10.11); Calibrated: 2016-02-24;
- Sensor-Surface: 2.5mm (Mechanical Surface Detection)
- Phantom: Triple Flat Phantom 5.1C; Type: QD 000 P51 CA; Serial: 1166

Body/Pin=100 mW/Area Scan (7x14x1): Measurement grid: dx=15mm, dy=15mm

Maximum value of SAR (measured) = 0.976 W/kg

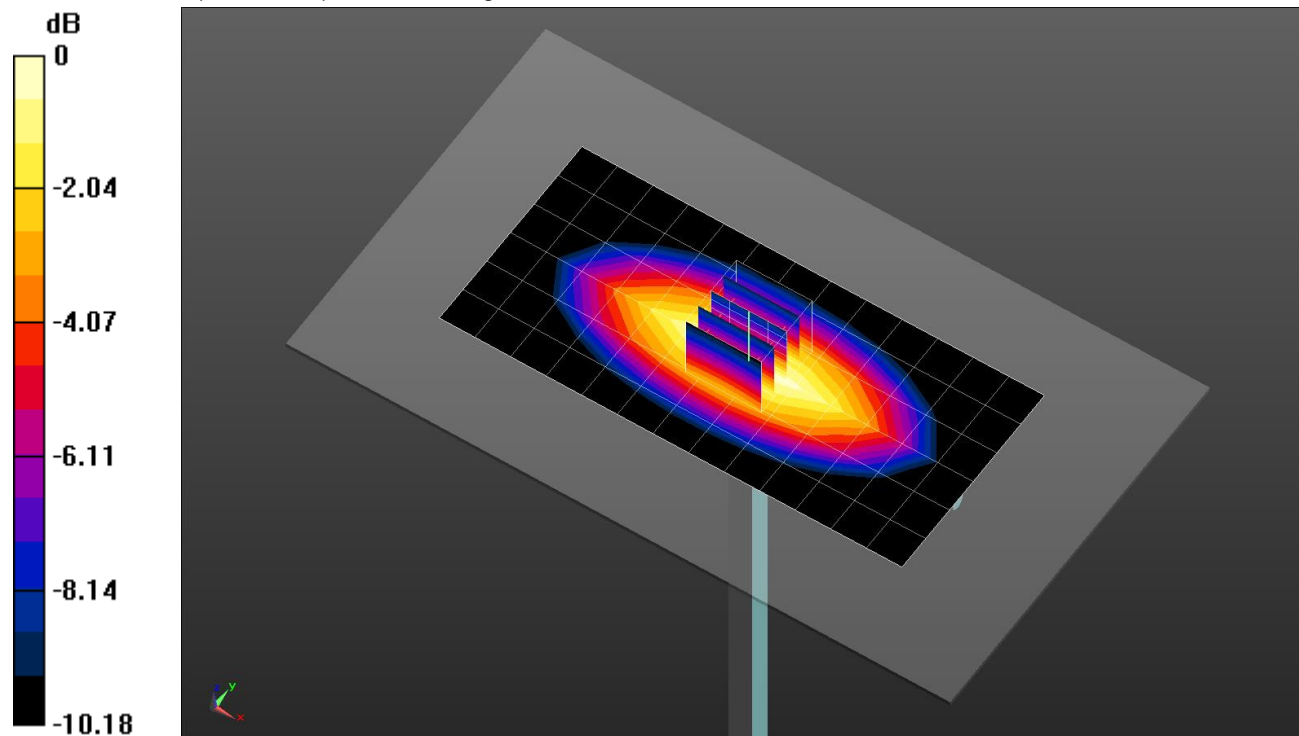
Body/Pin=100 mW/Zoom Scan (5x5x7)/Cube 0: Measurement grid: dx=8mm, dy=8mm, dz=5mm

Reference Value = 32.33 V/m; Power Drift = 0.00 dB

Peak SAR (extrapolated) = 1.20 W/kg

SAR(1 g) = 0.812 W/kg; SAR(10 g) = 0.539 W/kg

Maximum value of SAR (measured) = 0.983 W/kg

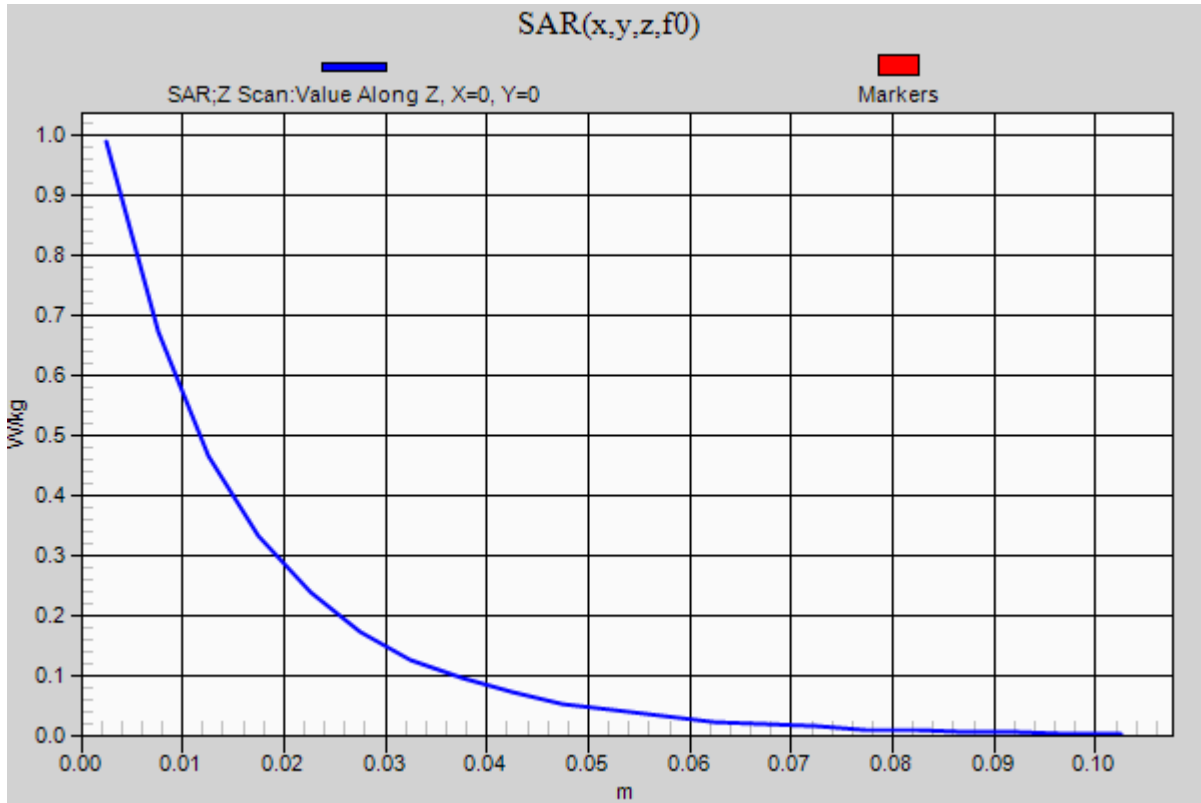


0 dB = 0.983 W/kg = -0.07 dBW/kg

20170207_SystemPerformanceCheck-D750V2 SN 1122

Frequency: 750 MHz; Duty Cycle: 1:1

Body/Pin=100 mW/Z Scan (1x1x21): Measurement grid: dx=20mm, dy=20mm, dz=5mm
Maximum value of SAR (measured) = 0.988 W/kg



20170207_SystemPerformanceCheck-D1750V2 SN 1125

Frequency: 1750 MHz; Duty Cycle: 1:1; Room Ambient Temperature: 23.0°C; Liquid Temperature: 22.0°C
 Medium parameters used: $f = 1750$ MHz; $\sigma = 1.318$ S/m; $\epsilon_r = 39.585$; $\rho = 1000$ kg/m³

DASY5 Configuration:

- Area Scan Setting: Find Secondary Maximum Within: 2.0 dB and with a peak SAR value greater than 0.0012W/kg
- Averaged Fast SAR: Polynomial fit
- Electronics: DAE4 Sn1494; Calibrated: 2016-07-18
- Probe: EX3DV4 - SN7314; ConvF(8.62, 8.62, 8.62); Calibrated: 2016-09-27;
- Sensor-Surface: 2.5mm (Mechanical Surface Detection)
- Phantom: SAM Phantom CRP v5.0(Middle); Type: QD000P40CD; Serial: TP:1854

Head/Pin=100 mW/Area Scan (7x7x1): Measurement grid: dx=15mm, dy=15mm

Maximum value of SAR (measured) = 4.53 W/kg

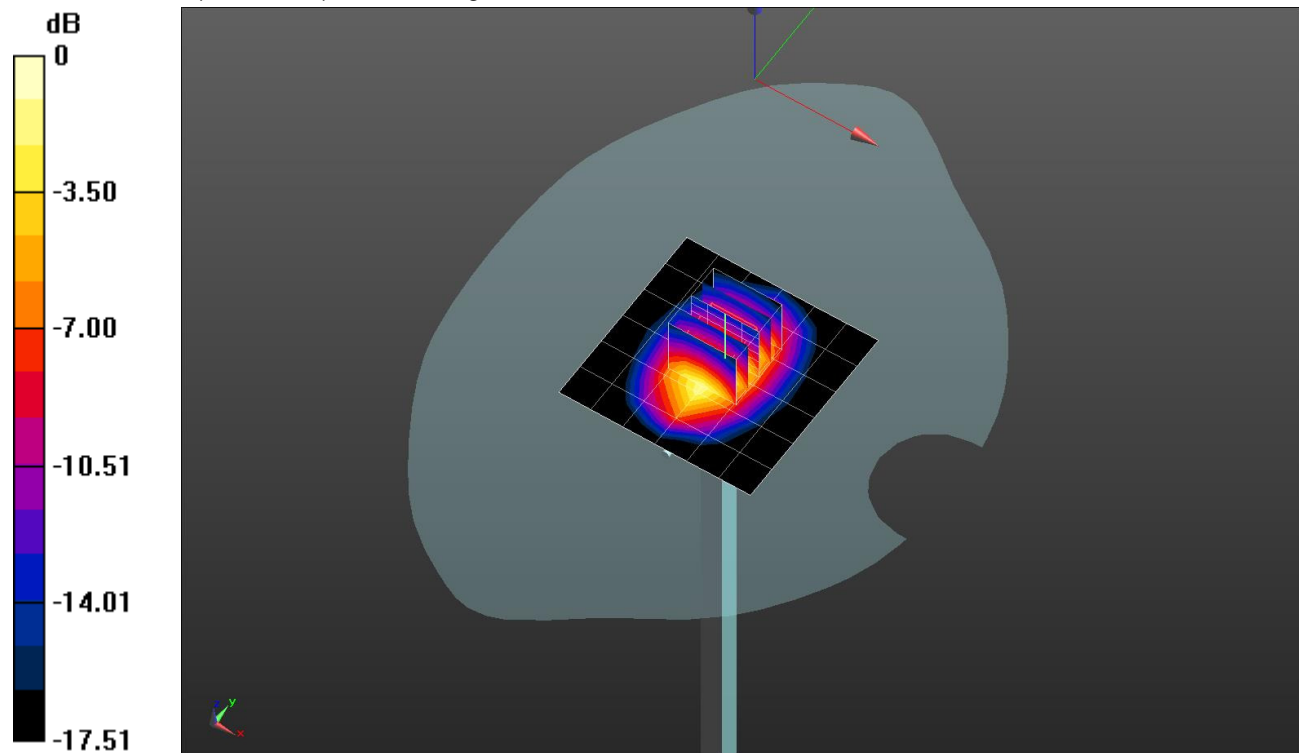
Head/Pin=100 mW/Zoom Scan (5x5x7)/Cube 0: Measurement grid: dx=8mm, dy=8mm, dz=5mm

Reference Value = 58.95 V/m; Power Drift = 0.01 dB

Peak SAR (extrapolated) = 6.13 W/kg

SAR(1 g) = 3.39 W/kg; SAR(10 g) = 1.8 W/kg

Maximum value of SAR (measured) = 4.52 W/kg



0 dB = 4.52 W/kg = 6.55 dBW/kg

20170207_SystemPerformanceCheck-D1750V2 SN 1125

Frequency: 1750 MHz; Duty Cycle: 1:1

Head/Pin=100 mW/Z Scan (1x1x21): Measurement grid: dx=20mm, dy=20mm, dz=5mm
Maximum value of SAR (measured) = 4.52 W/kg

