

## WCDMA Band II

Frequency: 1880 MHz; Duty Cycle: 1:1; Room Ambient Temperature: 23.0°C; Liquid Temperature: 22.0°C  
 Medium parameters used:  $f = 1880 \text{ MHz}$ ;  $\sigma = 1.448 \text{ S/m}$ ;  $\epsilon_r = 39.157$ ;  $\rho = 1000 \text{ kg/m}^3$

DASY5 Configuration:

- Area Scan Setting: Find Secondary Maximum Within: 2.0 dB and with a peak SAR value greater than 0.0012W/kg
- Electronics: DAE4 Sn1494; Calibrated: 2016-07-18
- Probe: EX3DV4 - SN7313; ConvF(7.85, 7.85, 7.85); Calibrated: 2015-12-30;
- Sensor-Surface: 2mm (Mechanical Surface Detection)
- Phantom: SAM Phantom CRP v5.0(Right); Type: QD000P40CD; Serial: TP:1855

**Next-to-Mouth/Rel.99 ch 9400/Area Scan (6x6x1):** Measurement grid:  $dx=15\text{mm}$ ,  $dy=15\text{mm}$

Maximum value of SAR (measured) = 0.463 W/kg

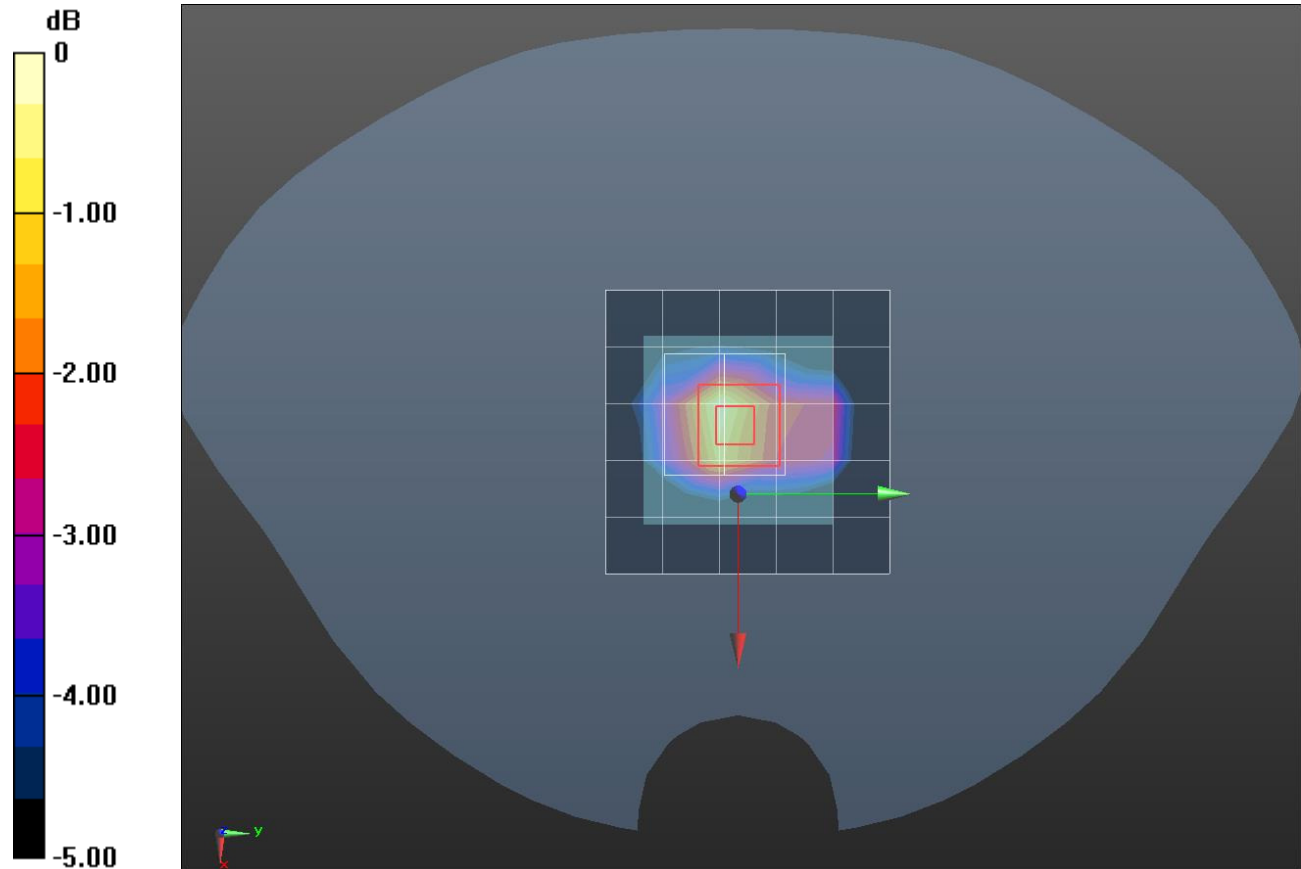
**Next-to-Mouth/Rel.99 ch 9400/Zoom Scan (5x5x7)/Cube 0:** Measurement grid:  $dx=8\text{mm}$ ,  $dy=8\text{mm}$ ,  $dz=5\text{mm}$

Reference Value = 17.37 V/m; Power Drift = 0.00 dB

Peak SAR (extrapolated) = 0.585 W/kg

**SAR(1 g) = 0.408 W/kg; SAR(10 g) = 0.230 W/kg**

Maximum value of SAR (measured) = 0.499 W/kg



0 dB = 0.499 W/kg = -3.02 dBW/kg

## WCDMA Band II

Frequency: 1880 MHz; Duty Cycle: 1:1; Room Ambient Temperature: 23.0°C; Liquid Temperature: 22.0°C  
 Medium parameters used:  $f = 1880 \text{ MHz}$ ;  $\sigma = 1.568 \text{ S/m}$ ;  $\epsilon_r = 54.315$ ;  $\rho = 1000 \text{ kg/m}^3$

DASY5 Configuration:

- Area Scan Setting: Find Secondary Maximum Within: 2.0 dB and with a peak SAR value greater than 0.0012W/kg
- Electronics: DAE4 Sn1494; Calibrated: 2016-07-18
- Probe: EX3DV4 - SN7313; ConvF(7.54, 7.54, 7.54); Calibrated: 2015-12-30;
- Sensor-Surface: 2mm (Mechanical Surface Detection)
- Phantom: ELI v6.0; Type: QDOVA003AA; Serial: TP:xxxx

**Extremity/Rel.99 ch 9400/Area Scan (6x6x1):** Measurement grid:  $dx=15\text{mm}$ ,  $dy=15\text{mm}$

Maximum value of SAR (measured) = 2.00 W/kg

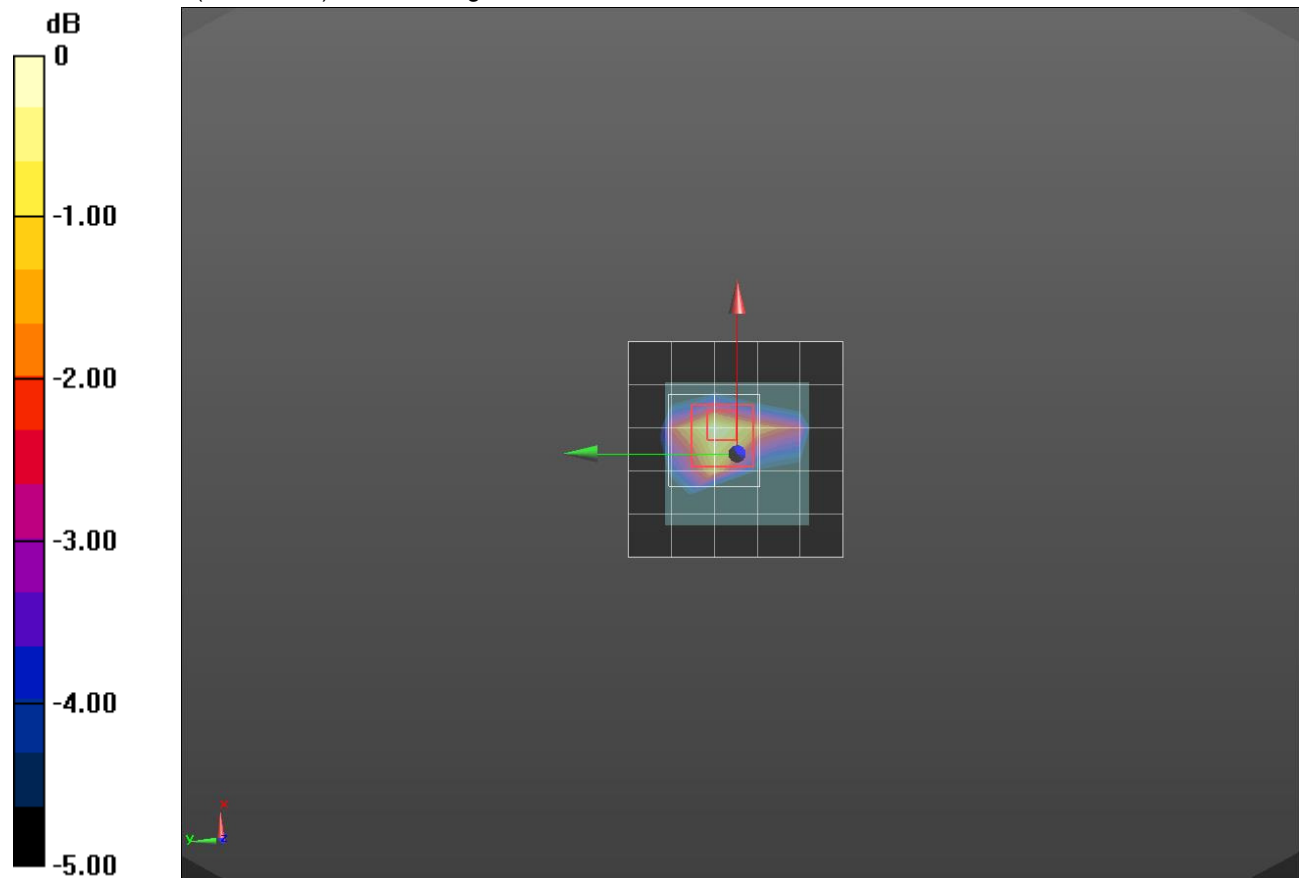
**Extremity/Rel.99 ch 9400/Zoom Scan (5x5x7)/Cube 0:** Measurement grid:  $dx=8\text{mm}$ ,  $dy=8\text{mm}$ ,  $dz=5\text{mm}$

Reference Value = 36.15 V/m; Power Drift = -0.12 dB

Peak SAR (extrapolated) = 2.62 W/kg

**SAR(1 g) = 1.49 W/kg; SAR(10 g) = 0.850 W/kg**

Maximum value of SAR (measured) = 2.06 W/kg



0 dB = 2.06 W/kg = 3.14 dBW/kg

## WCDMA Band IV

Frequency: 1732.6 MHz; Duty Cycle: 1:1; Room Ambient Temperature: 23.0°C; Liquid Temperature: 22.0°C  
 Medium parameters used (interpolated):  $f = 1732.6$  MHz;  $\sigma = 1.316$  S/m;  $\epsilon_r = 39.655$ ;  $\rho = 1000$  kg/m<sup>3</sup>

DASY5 Configuration:

- Area Scan Setting: Find Secondary Maximum Within: 2.0 dB and with a peak SAR value greater than 0.0012W/kg
- Electronics: DAE4 Sn1494; Calibrated: 2016-07-18
- Probe: EX3DV4 - SN7313; ConvF(8.2, 8.2, 8.2); Calibrated: 2015-12-30;
- Sensor-Surface: 2mm (Mechanical Surface Detection)
- Phantom: SAM Phantom CRP v5.0(Right); Type: QD000P40CD; Serial: TP:1855

**Next-to-Mouth/Rel.99 ch 1413/Area Scan (6x6x1):** Measurement grid: dx=15mm, dy=15mm

Maximum value of SAR (measured) = 0.259 W/kg

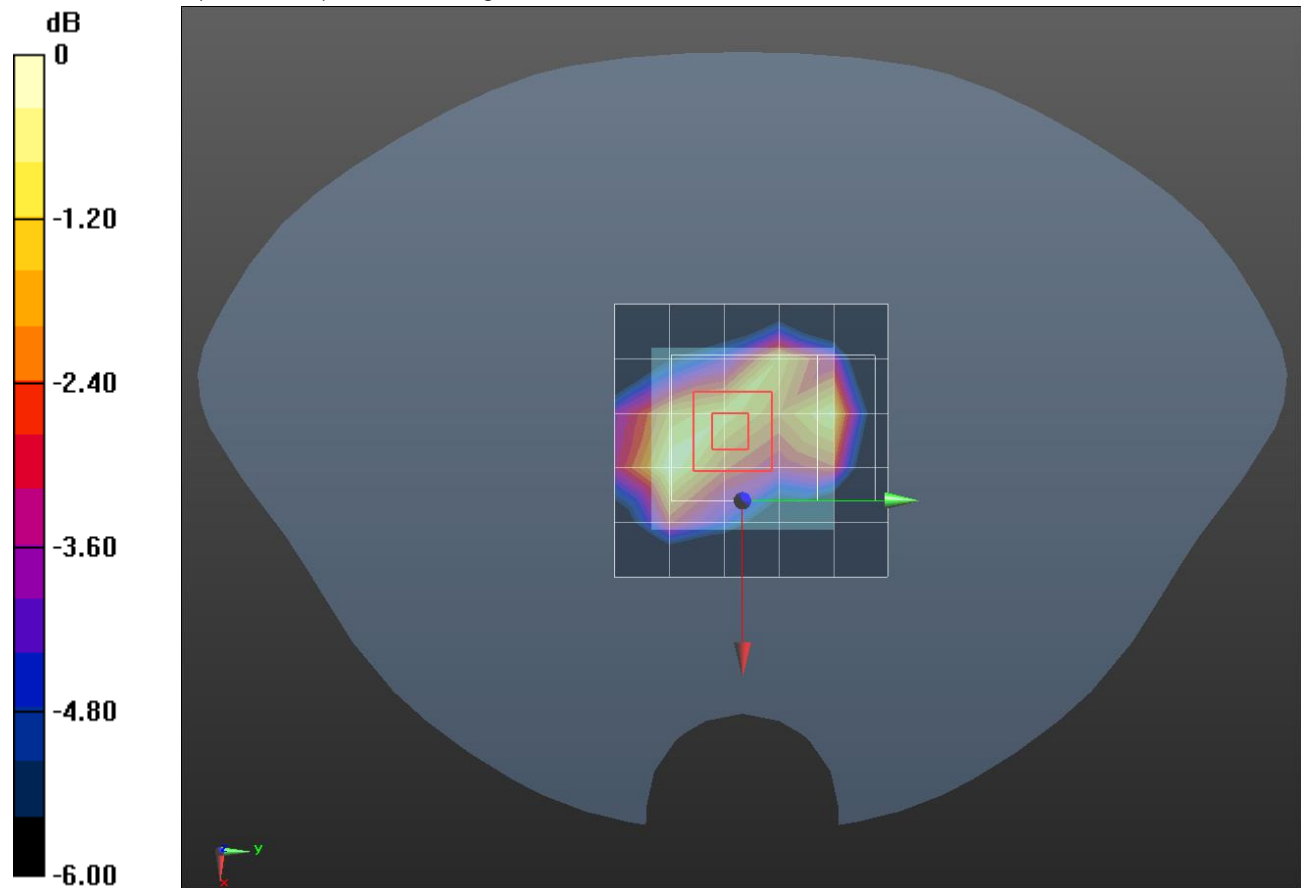
**Next-to-Mouth/Rel.99 ch 1413/Zoom Scan (6x8x7)/Cube 0:** Measurement grid: dx=8mm, dy=8mm, dz=5mm

Reference Value = 14.35 V/m; Power Drift = -0.05 dB

Peak SAR (extrapolated) = 0.360 W/kg

**SAR(1 g) = 0.199 W/kg; SAR(10 g) = 0.121 W/kg**

Maximum value of SAR (measured) = 0.285 W/kg



0 dB = 0.285 W/kg = -5.45 dBW/kg

## WCDMA Band Iv

Frequency: 1732.6 MHz; Duty Cycle: 1:1; Room Ambient Temperature: 23.0°C; Liquid Temperature: 22.0°C  
 Medium parameters used (interpolated):  $f = 1732.6$  MHz;  $\sigma = 1.428$  S/m;  $\epsilon_r = 54.663$ ;  $\rho = 1000$  kg/m<sup>3</sup>

DASY5 Configuration:

- Area Scan Setting: Find Secondary Maximum Within: 2.0 dB and with a peak SAR value greater than 0.0012W/kg
- Electronics: DAE4 Sn1494; Calibrated: 2016-07-18
- Probe: EX3DV4 - SN7313; ConvF(7.78, 7.78, 7.78); Calibrated: 2015-12-30;
- Sensor-Surface: 2mm (Mechanical Surface Detection)
- Phantom: ELI v6.0; Type: QDOVA003AA; Serial: TP:xxxx

**Extremity/Rel.99 ch 1413/Area Scan (6x6x1):** Measurement grid: dx=15mm, dy=15mm

Maximum value of SAR (measured) = 1.14 W/kg

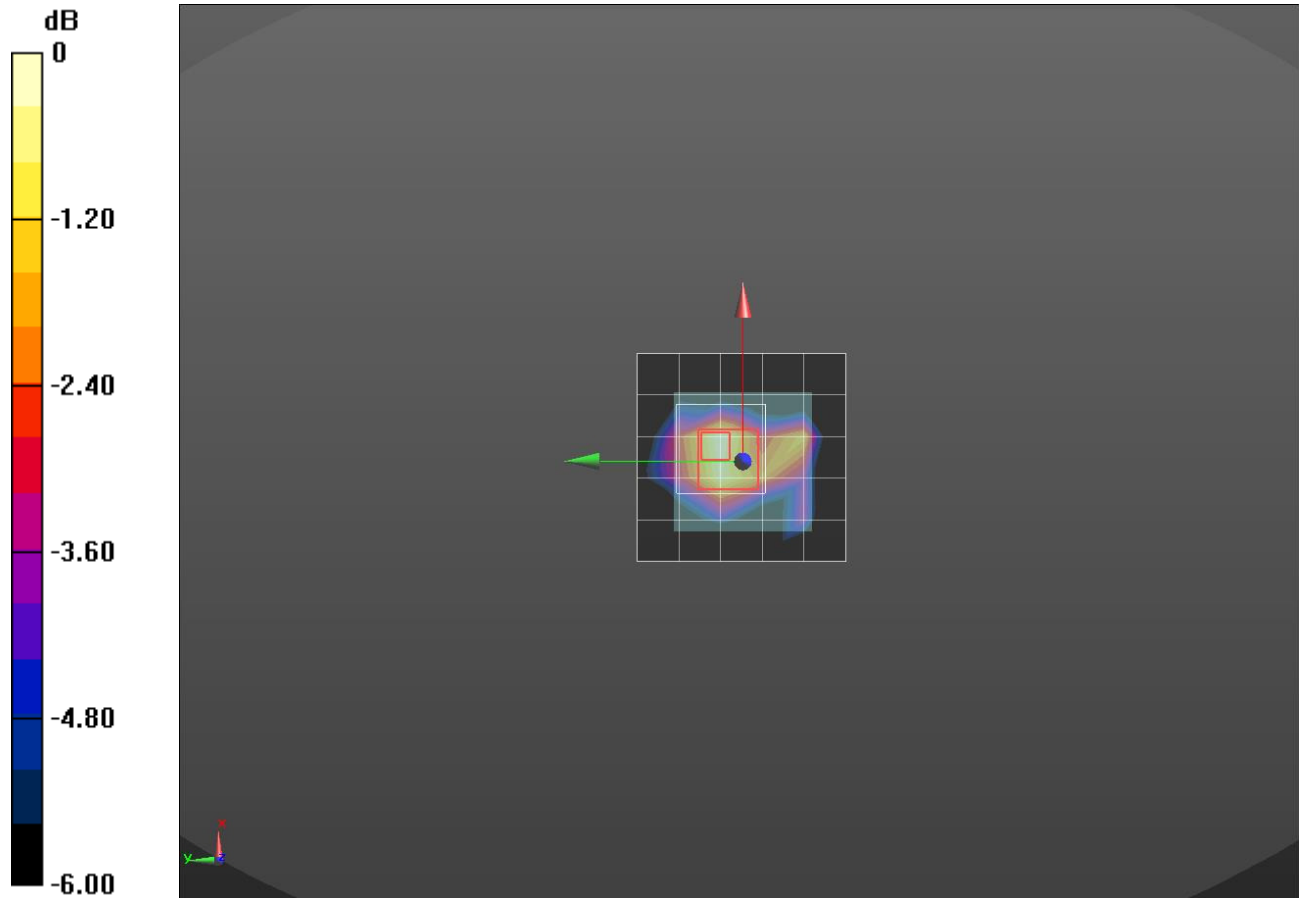
**Extremity/Rel.99 ch 1413/Zoom Scan (5x5x7)/Cube 0:** Measurement grid: dx=8mm, dy=8mm, dz=5mm

Reference Value = 28.81 V/m; Power Drift = 0.13 dB

Peak SAR (extrapolated) = 1.49 W/kg

**SAR(1 g) = 0.914 W/kg; SAR(10 g) = 0.552 W/kg**

Maximum value of SAR (measured) = 1.11 W/kg



0 dB = 1.11 W/kg = 0.45 dBW/kg

## WCDMA Band V

Frequency: 836.6 MHz; Duty Cycle: 1:1; Room Ambient Temperature: 23.0°C; Liquid Temperature: 22.0°C  
 Medium parameters used (interpolated):  $f = 836.6$  MHz;  $\sigma = 0.937$  S/m;  $\epsilon_r = 40.769$ ;  $\rho = 1000$  kg/m<sup>3</sup>

DASY5 Configuration:

- Area Scan Setting: Find Secondary Maximum Within: 2.0 dB and with a peak SAR value greater than 0.0012W/kg
- Electronics: DAE4 Sn912; Calibrated: 2015-11-19
- Probe: EX3DV4 - SN7330; ConvF(9.93, 9.93, 9.93); Calibrated: 2016-02-24;
- Sensor-Surface: 2mm (Mechanical Surface Detection)
- Phantom: SAM (20deg probe tilt) with CRP v5.0(Right); Type: QD000P40CD; Serial: TP:xxxx

**Next-to-Mouth/Rel.99 ch 4183/Area Scan (6x6x1):** Measurement grid: dx=15mm, dy=15mm

Maximum value of SAR (measured) = 0.0302 W/kg

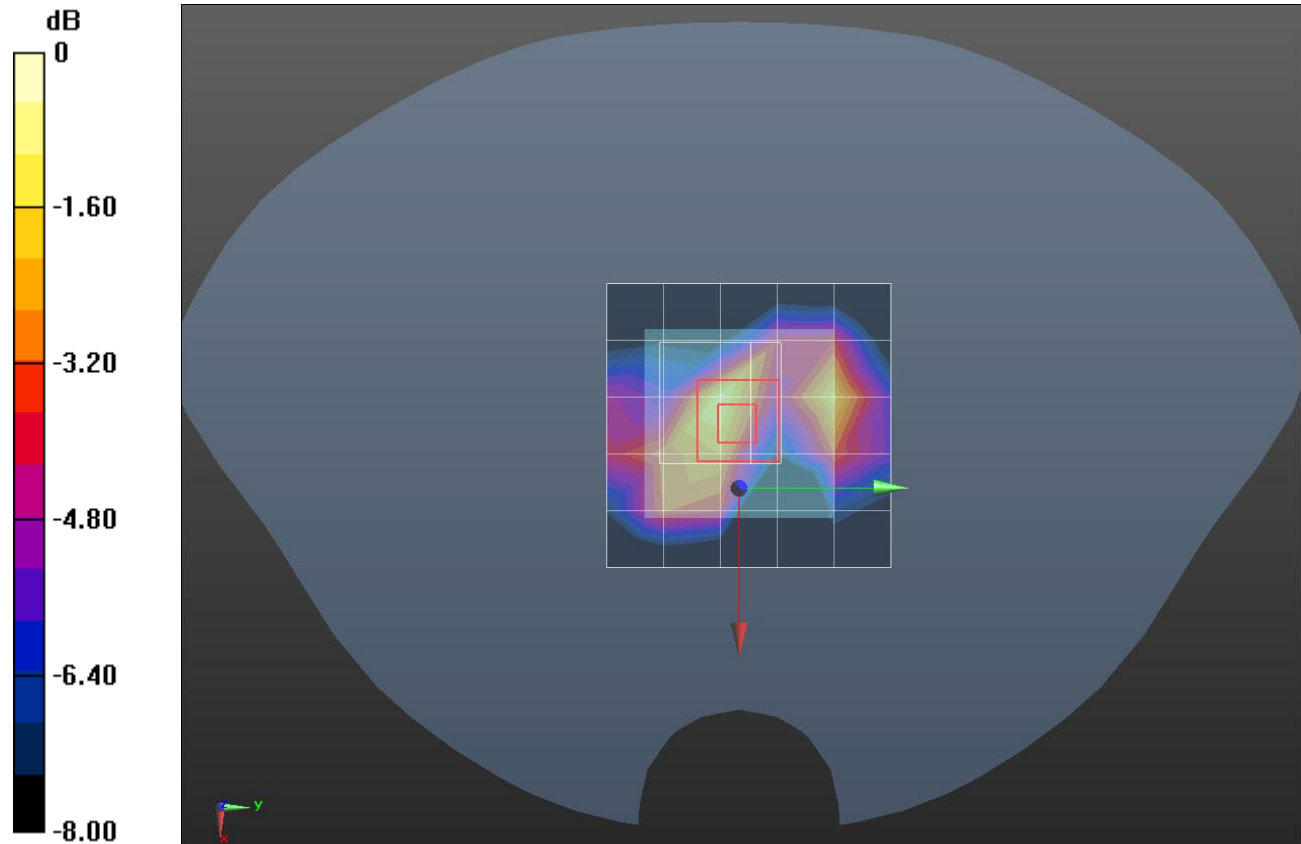
**Next-to-Mouth/Rel.99 ch 4183/Zoom Scan (5x5x7)/Cube 0:** Measurement grid: dx=8mm, dy=8mm, dz=5mm

Reference Value = 5.765 V/m; Power Drift = -0.11 dB

Peak SAR (extrapolated) = 0.0620 W/kg

**SAR(1 g) = 0.026 W/kg; SAR(10 g) = 0.011 W/kg**

Maximum value of SAR (measured) = 0.0364 W/kg



0 dB = 0.0364 W/kg = -14.39 dBW/kg

## WCDMA Band V

Frequency: 836.6 MHz; Duty Cycle: 1:1; Room Ambient Temperature: 23.0°C; Liquid Temperature: 22.0°C  
 Medium parameters used (interpolated):  $f = 836.6$  MHz;  $\sigma = 1.001$  S/m;  $\epsilon_r = 55.057$ ;  $\rho = 1000$  kg/m<sup>3</sup>

DASY5 Configuration:

- Area Scan Setting: Find Secondary Maximum Within: 2.0 dB and with a peak SAR value greater than 0.0012W/kg
- Electronics: DAE4 Sn1494; Calibrated: 2016-07-18
- Probe: EX3DV4 - SN7313; ConvF(9.42, 9.42, 9.42); Calibrated: 2015-12-30;
- Sensor-Surface: 2mm (Mechanical Surface Detection)
- Phantom: ELI v6.0; Type: QDOVA003AA; Serial: TP:xxxx

**Extremity/Rel.99 ch 4183/Area Scan (6x6x1):** Measurement grid: dx=15mm, dy=15mm

Maximum value of SAR (measured) = 0.883 W/kg

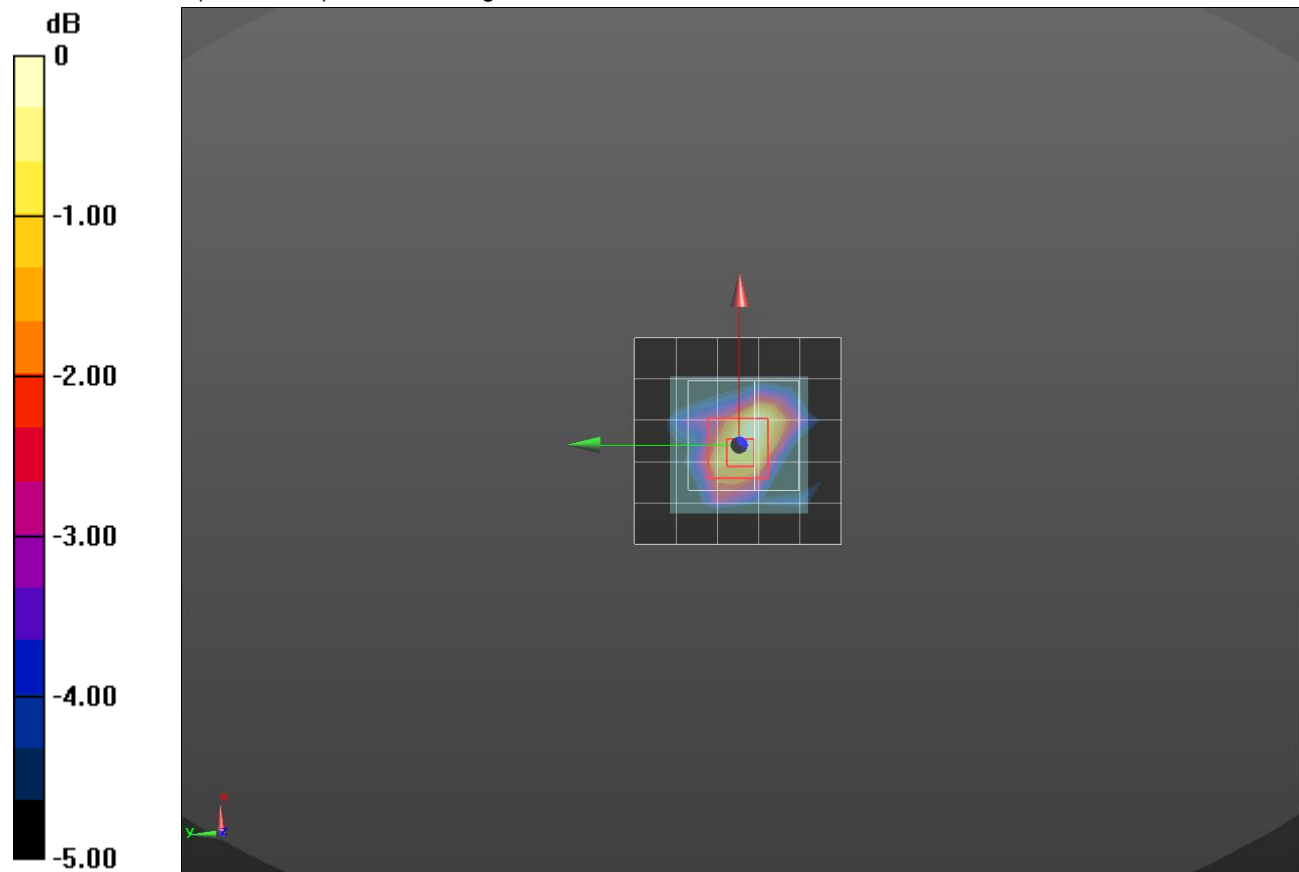
**Extremity/Rel.99 ch 4183/Zoom Scan (6x6x7)/Cube 0:** Measurement grid: dx=8mm, dy=8mm, dz=5mm

Reference Value = 30.49 V/m; Power Drift = -0.10 dB

Peak SAR (extrapolated) = 1.15 W/kg

**SAR(1 g) = 0.581 W/kg; SAR(10 g) = 0.350 W/kg**

Maximum value of SAR (measured) = 0.813 W/kg



0 dB = 0.813 W/kg = -0.90 dBW/kg

## LTE Band 2

Frequency: 1880 MHz; Duty Cycle: 1:1; Room Ambient Temperature: 23.0°C; Liquid Temperature: 22.0°C  
 Medium parameters used:  $f = 1880 \text{ MHz}$ ;  $\sigma = 1.448 \text{ S/m}$ ;  $\epsilon_r = 39.157$ ;  $\rho = 1000 \text{ kg/m}^3$

DASY5 Configuration:

- Area Scan Setting: Find Secondary Maximum Within: 2.0 dB and with a peak SAR value greater than 0.0012W/kg
- Electronics: DAE4 Sn1494; Calibrated: 2016-07-18
- Probe: EX3DV4 - SN7313; ConvF(7.85, 7.85, 7.85); Calibrated: 2015-12-30;
- Sensor-Surface: 2mm (Mechanical Surface Detection)
- Phantom: SAM Phantom CRP v5.0(Right); Type: QD000P40CD; Serial: TP:1855

### Next-to-Mouth/QPSK RB 1/99 ch 18900 Sample 7/Area Scan (6x6x1): Measurement grid:

$dx=15\text{mm}$ ,  $dy=15\text{mm}$

Maximum value of SAR (measured) = 0.529 W/kg

### Next-to-Mouth/QPSK RB 1/99 ch 18900 Sample 7/Zoom Scan (5x5x7)/Cube 0: Measurement

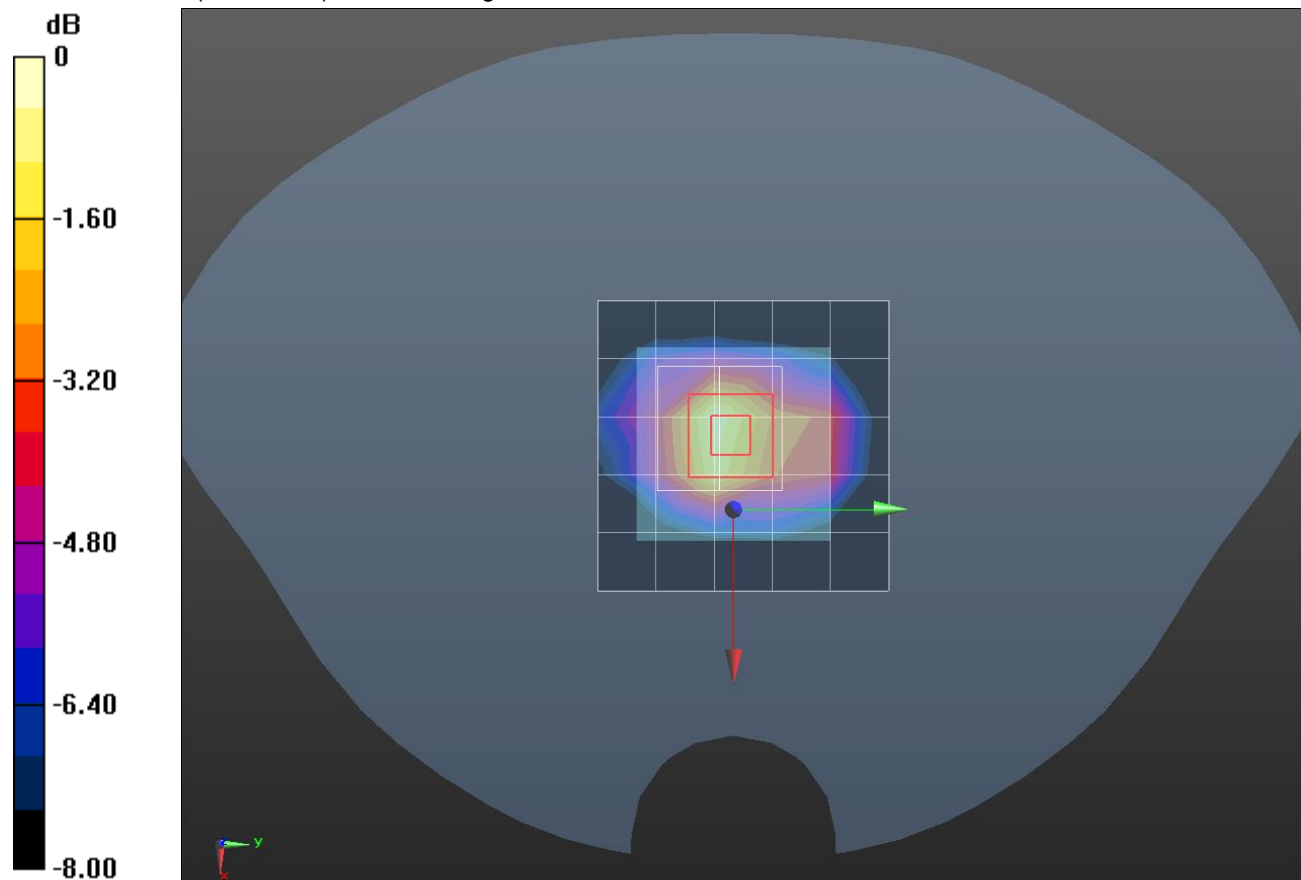
grid:  $dx=8\text{mm}$ ,  $dy=8\text{mm}$ ,  $dz=5\text{mm}$

Reference Value = 19.58 V/m; Power Drift = -0.14 dB

Peak SAR (extrapolated) = 0.707 W/kg

**SAR(1 g) = 0.482 W/kg; SAR(10 g) = 0.263 W/kg**

Maximum value of SAR (measured) = 0.600 W/kg



0 dB = 0.600 W/kg = -2.22 dBW/kg

## LTE Band 2

Frequency: 1880 MHz; Duty Cycle: 1:1; Room Ambient Temperature: 23.0°C; Liquid Temperature: 22.0°C  
 Medium parameters used:  $f = 1880 \text{ MHz}$ ;  $\sigma = 1.568 \text{ S/m}$ ;  $\epsilon_r = 54.315$ ;  $\rho = 1000 \text{ kg/m}^3$

DASY5 Configuration:

- Area Scan Setting: Find Secondary Maximum Within: 2.0 dB and with a peak SAR value greater than 0.0012W/kg
- Electronics: DAE4 Sn1494; Calibrated: 2016-07-18
- Probe: EX3DV4 - SN7313; ConvF(7.54, 7.54, 7.54); Calibrated: 2015-12-30;
- Sensor-Surface: 2mm (Mechanical Surface Detection)
- Phantom: ELI v6.0; Type: QDOVA003AA; Serial: TP:xxxx

**Extremity/QPSK RB 1/99 ch 18900/Area Scan (6x6x1):** Measurement grid:  $dx=15\text{mm}$ ,  $dy=15\text{mm}$   
 Maximum value of SAR (measured) = 2.09 W/kg

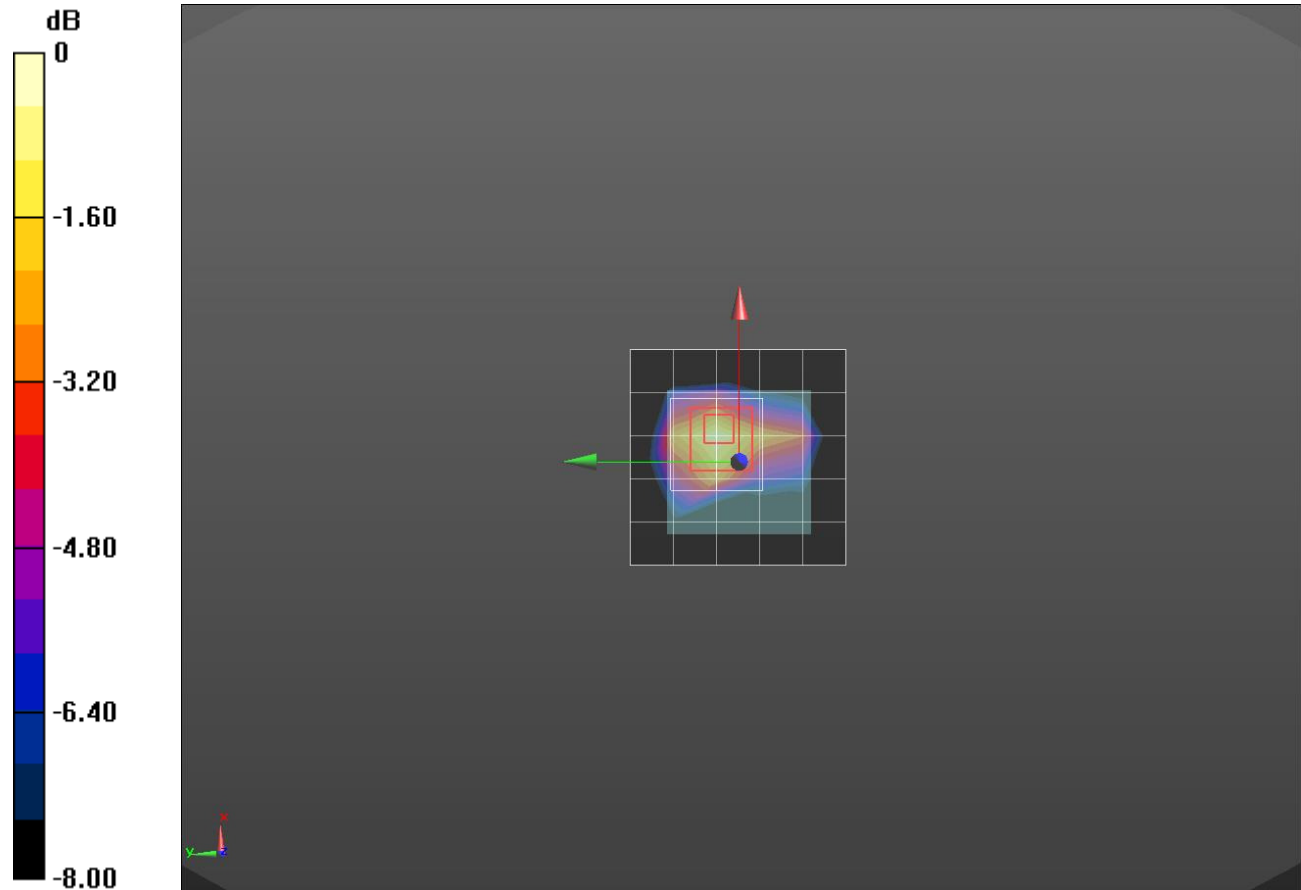
**Extremity/QPSK RB 1/99 ch 18900/Zoom Scan (5x5x7)/Cube 0:** Measurement grid:  $dx=8\text{mm}$ ,  $dy=8\text{mm}$ ,  $dz=5\text{mm}$

Reference Value = 37.01 V/m; Power Drift = -0.11 dB

Peak SAR (extrapolated) = 3.00 W/kg

**SAR(1 g) = 1.59 W/kg; SAR(10 g) = 0.876 W/kg**

Maximum value of SAR (measured) = 2.29 W/kg



0 dB = 2.29 W/kg = 3.60 dBW/kg

## LTE Band 4

Frequency: 1732.5 MHz; Duty Cycle: 1:1; Room Ambient Temperature: 23.0°C; Liquid Temperature: 22.0°C  
 Medium parameters used (interpolated):  $f = 1732.5$  MHz;  $\sigma = 1.316$  S/m;  $\epsilon_r = 39.656$ ;  $\rho = 1000$  kg/m<sup>3</sup>

DASY5 Configuration:

- Area Scan Setting: Find Secondary Maximum Within: 2.0 dB and with a peak SAR value greater than 0.0012W/kg
- Electronics: DAE4 Sn1494; Calibrated: 2016-07-18
- Probe: EX3DV4 - SN7313; ConvF(8.2, 8.2, 8.2); Calibrated: 2015-12-30;
- Sensor-Surface: 2mm (Mechanical Surface Detection)
- Phantom: SAM Phantom CRP v5.0(Right); Type: QD000P40CD; Serial: TP:1855

**Next-to-Mouth/QPSK RB 1/99 ch 20175/Area Scan (6x6x1):** Measurement grid: dx=15mm, dy=15mm  
 Maximum value of SAR (measured) = 0.422 W/kg

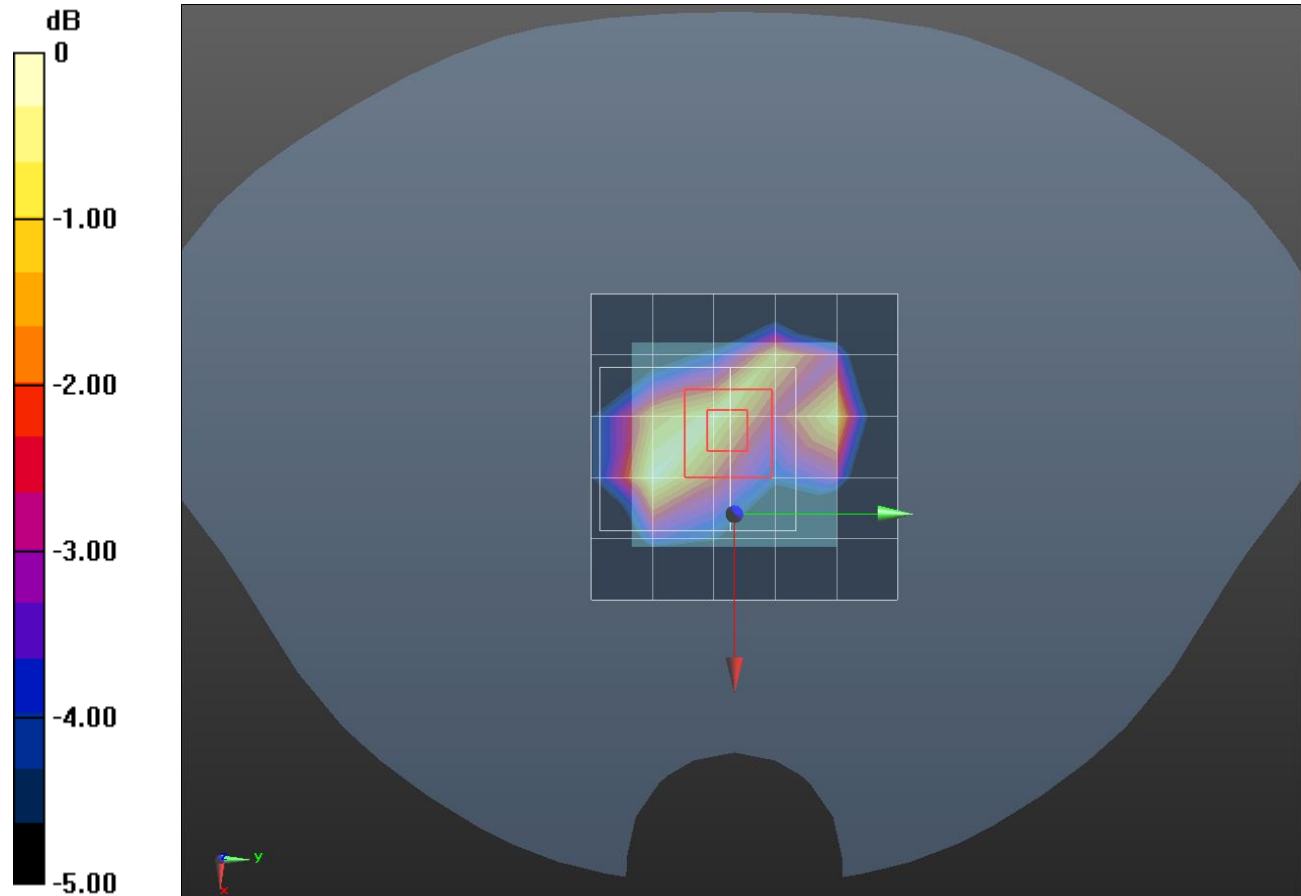
**Next-to-Mouth/QPSK RB 1/99 ch 20175/Zoom Scan (6x7x7)/Cube 0:** Measurement grid: dx=8mm, dy=8mm, dz=5mm

Reference Value = 18.04 V/m; Power Drift = 0.20 dB

Peak SAR (extrapolated) = 0.558 W/kg

**SAR(1 g) = 0.341 W/kg; SAR(10 g) = 0.197 W/kg**

Maximum value of SAR (measured) = 0.444 W/kg



0 dB = 0.444 W/kg = -3.53 dBW/kg

## LTE Band 4

Frequency: 1732.5 MHz; Duty Cycle: 1:1; Room Ambient Temperature: 23.0°C; Liquid Temperature: 22.0°C  
 Medium parameters used (interpolated):  $f = 1732.5$  MHz;  $\sigma = 1.448$  S/m;  $\epsilon_r = 52.172$ ;  $\rho = 1000$  kg/m<sup>3</sup>

DASY5 Configuration:

- Area Scan Setting: Find Secondary Maximum Within: 2.0 dB and with a peak SAR value greater than 0.0012W/kg
- Electronics: DAE4 Sn1494; Calibrated: 2016-07-18
- Probe: EX3DV4 - SN7313; ConvF(7.78, 7.78, 7.78); Calibrated: 2015-12-30;
- Sensor-Surface: 2mm (Mechanical Surface Detection)
- Phantom: ELI v6.0; Type: QDOVA003AA; Serial: TP:xxxx

**Extremity/QPSK RB 1/99 ch 20175/Area Scan (6x6x1):** Measurement grid: dx=15mm, dy=15mm

Maximum value of SAR (measured) = 1.43 W/kg

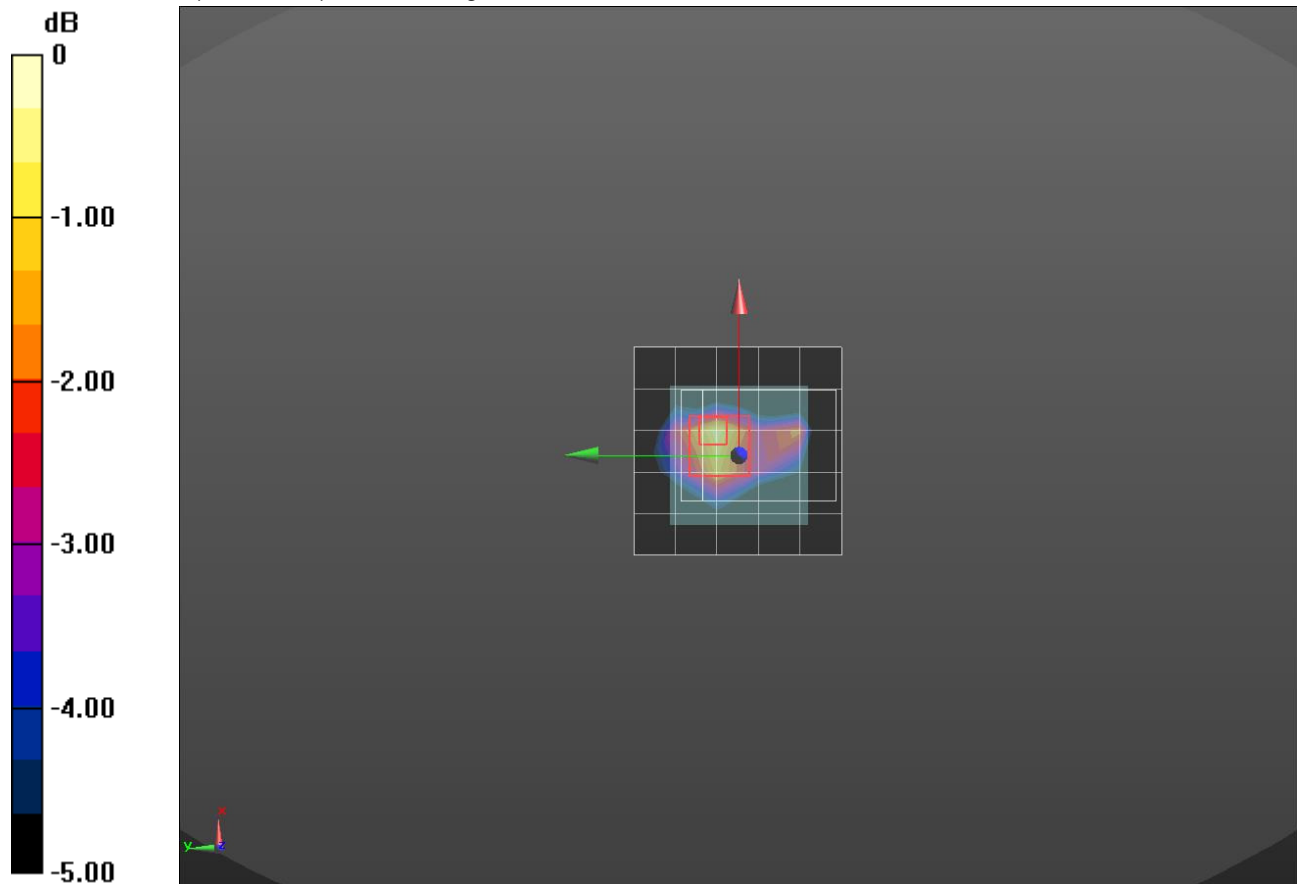
**Extremity/QPSK RB 1/99 ch 20175/Zoom Scan 2 (6x8x7)/Cube 0:** Measurement grid: dx=8mm, dy=8mm, dz=5mm

Reference Value = 32.24 V/m; Power Drift = 0.16 dB

Peak SAR (extrapolated) = 2.01 W/kg

**SAR(1 g) = 1.17 W/kg; SAR(10 g) = 0.693 W/kg**

Maximum value of SAR (measured) = 1.56 W/kg



0 dB = 1.56 W/kg = 1.93 dBW/kg

## LTE Band 5

Frequency: 836.5 MHz; Duty Cycle: 1:1; Room Ambient Temperature: 23.0°C; Liquid Temperature: 22.0°C  
 Medium parameters used (interpolated):  $f = 836.5$  MHz;  $\sigma = 0.937$  S/m;  $\epsilon_r = 40.77$ ;  $\rho = 1000$  kg/m<sup>3</sup>

DASY5 Configuration:

- Area Scan Setting: Find Secondary Maximum Within: 2.0 dB and with a peak SAR value greater than 0.0012W/kg
- Electronics: DAE4 Sn912; Calibrated: 2015-11-19
- Probe: EX3DV4 - SN7330; ConvF(9.93, 9.93, 9.93); Calibrated: 2016-02-24;
- Sensor-Surface: 2mm (Mechanical Surface Detection)
- Phantom: SAM (20deg probe tilt) with CRP v5.0(Right); Type: QD000P40CD; Serial: TP:xxxx

**Next-to-Mouth/QPSK RB 1/0 ch 20525/Area Scan (6x6x1):** Measurement grid: dx=15mm, dy=15mm  
 Maximum value of SAR (measured) = 0.0298 W/kg

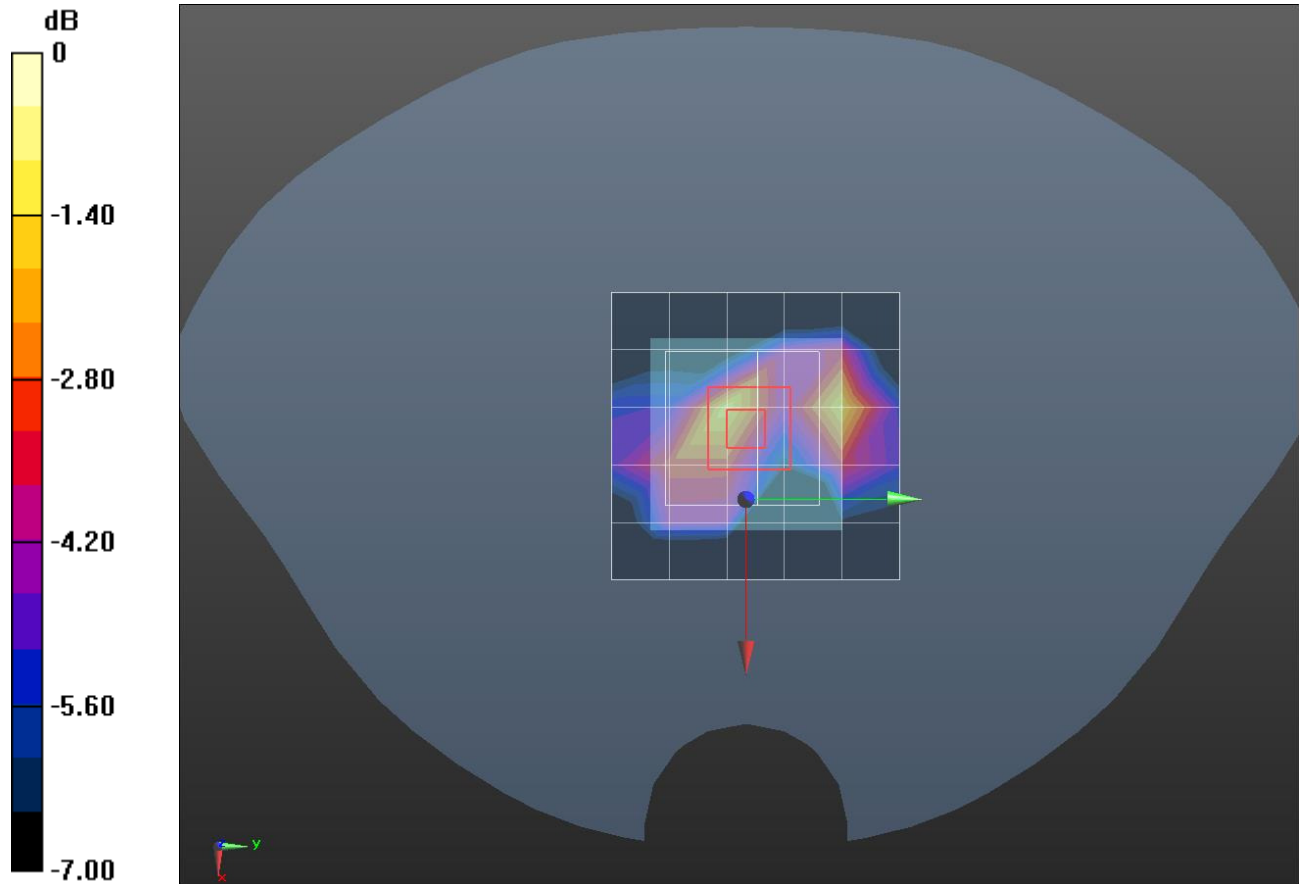
**Next-to-Mouth/QPSK RB 1/0 ch 20525/Zoom Scan (6x6x7)/Cube 0:** Measurement grid: dx=8mm, dy=8mm, dz=5mm

Reference Value = 5.631 V/m; Power Drift = -0.08 dB

Peak SAR (extrapolated) = 0.0750 W/kg

**SAR(1 g) = 0.029 W/kg; SAR(10 g) = 0.011 W/kg**

Maximum value of SAR (measured) = 0.0379 W/kg



0 dB = 0.0379 W/kg = -14.21 dBW/kg

## LTE Band 5

Frequency: 836.5 MHz; Duty Cycle: 1:1; Room Ambient Temperature: 23.0°C; Liquid Temperature: 22.0°C  
 Medium parameters used (interpolated):  $f = 836.5$  MHz;  $\sigma = 1.001$  S/m;  $\epsilon_r = 55.058$ ;  $\rho = 1000$  kg/m<sup>3</sup>

DASY5 Configuration:

- Area Scan Setting: Find Secondary Maximum Within: 2.0 dB and with a peak SAR value greater than 0.0012W/kg
- Electronics: DAE4 Sn1494; Calibrated: 2016-07-18
- Probe: EX3DV4 - SN7313; ConvF(9.42, 9.42, 9.42); Calibrated: 2015-12-30;
- Sensor-Surface: 2mm (Mechanical Surface Detection)
- Phantom: ELI v6.0; Type: QDOVA003AA; Serial: TP:xxxx

**Extremity/QPSK RB 1/0 ch 20525/Area Scan (6x6x1):** Measurement grid: dx=15mm, dy=15mm  
 Maximum value of SAR (measured) = 0.876 W/kg

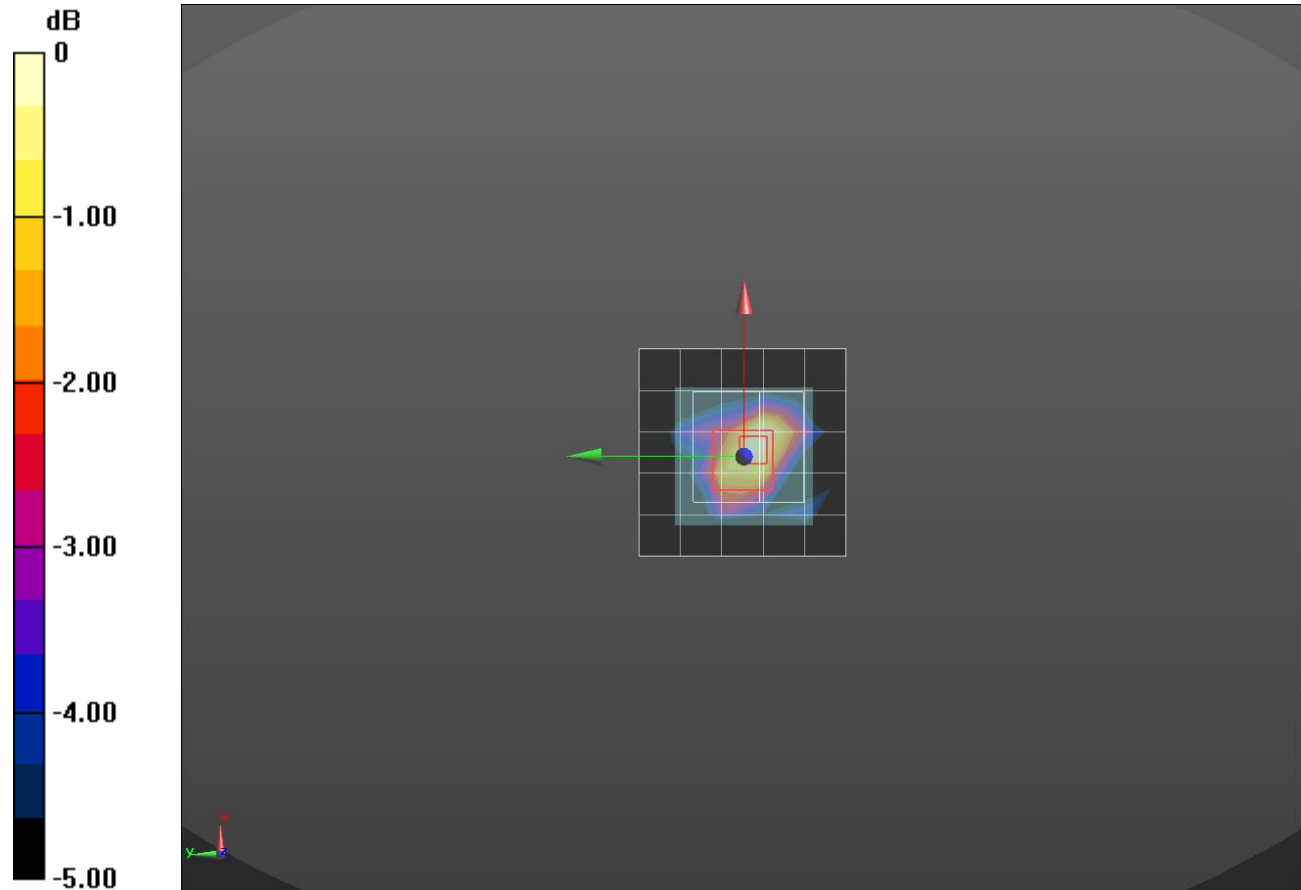
**Extremity/QPSK RB 1/0 ch 20525/Zoom Scan (6x6x7)/Cube 0:** Measurement grid: dx=8mm, dy=8mm, dz=5mm

Reference Value = 29.98 V/m; Power Drift = 0.03 dB

Peak SAR (extrapolated) = 1.18 W/kg

**SAR(1 g) = 0.571 W/kg; SAR(10 g) = 0.342 W/kg**

Maximum value of SAR (measured) = 0.795 W/kg



0 dB = 0.795 W/kg = -1.00 dBW/kg

## WiFi 2.4GHz

Frequency: 2437 MHz; Duty Cycle: 1:1; Room Ambient Temperature: 23.0°C; Liquid Temperature: 22.0°C  
 Medium parameters used (interpolated):  $f = 2437$  MHz;  $\sigma = 1.845$  S/m;  $\epsilon_r = 38.268$ ;  $\rho = 1000$  kg/m<sup>3</sup>

DASY5 Configuration:

- Area Scan Setting: Find Secondary Maximum Within: 2.0 dB and with a peak SAR value greater than 0.0012W/kg
- Electronics: DAE4 Sn1468; Calibrated: 2016-09-08
- Probe: EX3DV4 - SN7330; ConvF(7.44, 7.44, 7.44); Calibrated: 2016-02-24;
- Sensor-Surface: 2.5mm (Mechanical Surface Detection)
- Phantom: SAM (20deg probe tilt) with CRP v5.0(Middle); Type: QD000P40CD; Serial: TP:1847

**Next-to-Mouth/802.11b\_ch 6/Area Scan (7x7x1):** Measurement grid: dx=12mm, dy=12mm

Maximum value of SAR (measured) = 0.225 W/kg

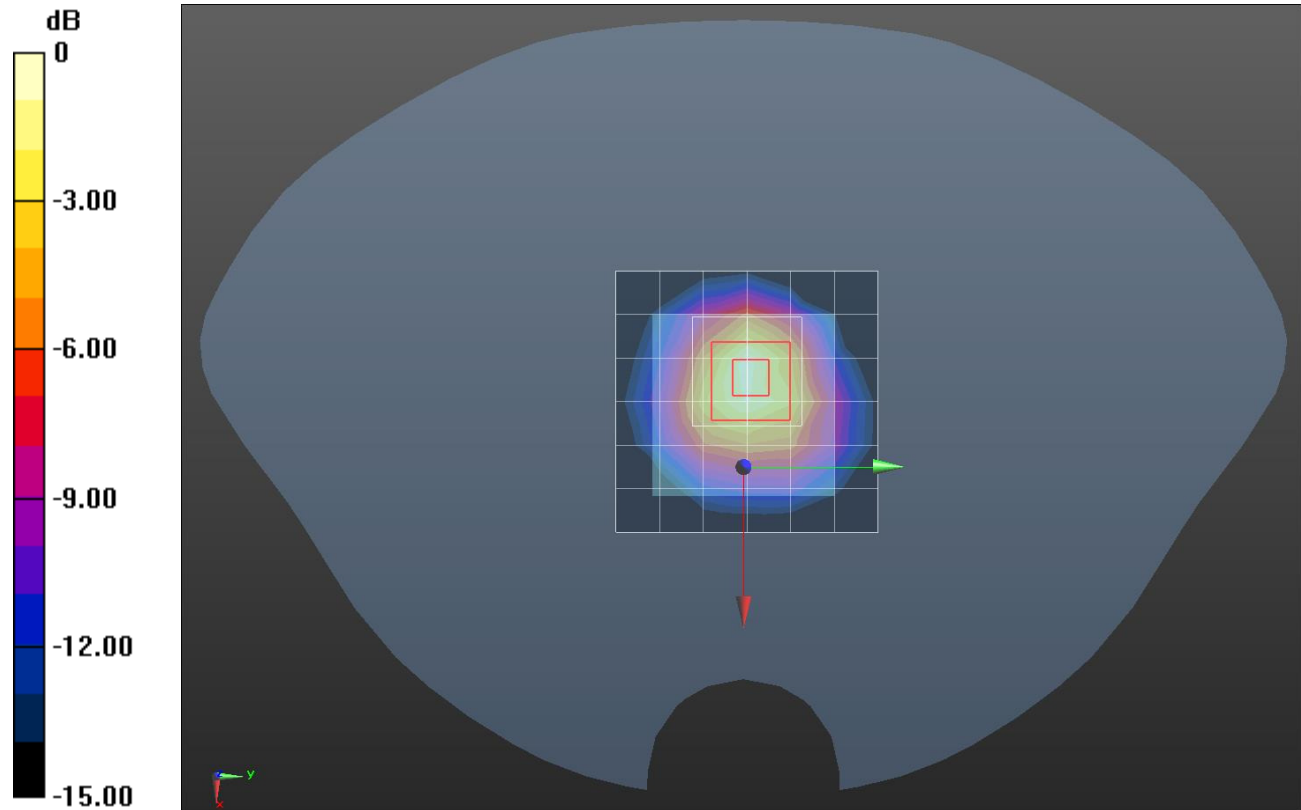
**Next-to-Mouth/802.11b\_ch 6/Zoom Scan (7x7x7)/Cube 0:** Measurement grid: dx=5mm, dy=5mm, dz=5mm

Reference Value = 11.04 V/m; Power Drift = -0.13 dB

Peak SAR (extrapolated) = 0.340 W/kg

**SAR(1 g) = 0.177 W/kg; SAR(10 g) = 0.082 W/kg**

Maximum value of SAR (measured) = 0.246 W/kg



0 dB = 0.246 W/kg = -6.09 dBW/kg

## WiFi 2.4GHz

Frequency: 2437 MHz; Duty Cycle: 1:1; Room Ambient Temperature: 23.0°C; Liquid Temperature: 22.0°C  
 Medium parameters used (interpolated):  $f = 2437$  MHz;  $\sigma = 2.007$  S/m;  $\epsilon_r = 51.918$ ;  $\rho = 1000$  kg/m<sup>3</sup>

DASY5 Configuration:

- Area Scan Setting: Find Secondary Maximum Within: 2.0 dB and with a peak SAR value greater than 0.0012W/kg
- Electronics: DAE4 Sn1468; Calibrated: 2016-09-08
- Probe: EX3DV4 - SN7330; ConvF(7.43, 7.43, 7.43); Calibrated: 2016-02-24;
- Sensor-Surface: 2.5mm (Mechanical Surface Detection)
- Phantom: Triple Flat Phantom 5.1C; Type: QD 000 P51 CA; Serial: 1166

**Extremity/802.11b\_ch 6 /Area Scan (7x7x1):** Measurement grid: dx=12mm, dy=12mm

Maximum value of SAR (measured) = 0.470 W/kg

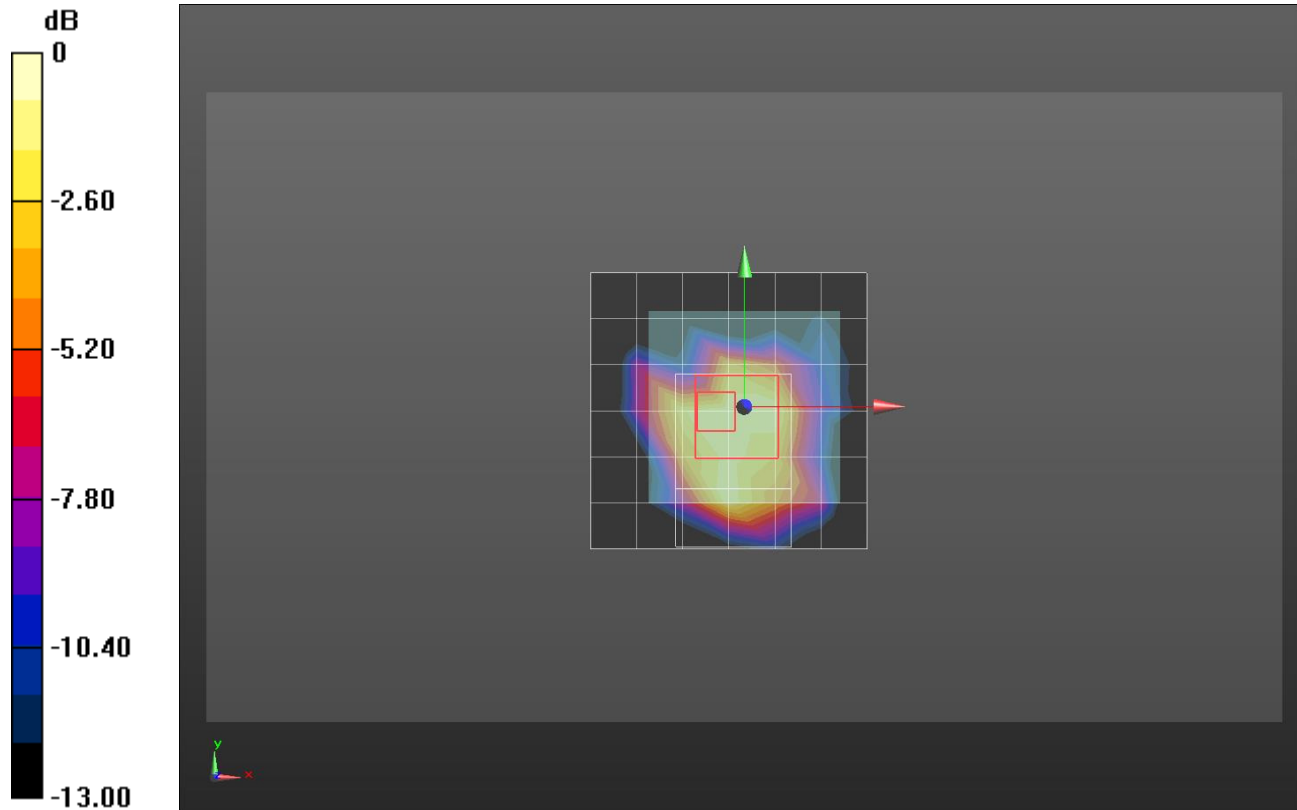
**Extremity/802.11b\_ch 6 /Zoom Scan (7x10x7)/Cube 0:** Measurement grid: dx=5mm, dy=5mm, dz=5mm

Reference Value = 15.57 V/m; Power Drift = 0.04 dB

Peak SAR (extrapolated) = 1.02 W/kg

**SAR(1 g) = 0.375 W/kg; SAR(10 g) = 0.221 W/kg**

Maximum value of SAR (measured) = 0.579 W/kg



0 dB = 0.579 W/kg = -2.37 dBW/kg

## Bluetooth

Frequency: 2402 MHz; Duty Cycle: 1:1.29033; Room Ambient Temperature: 23.0°C; Liquid Temperature: 22.0°C  
 Medium parameters used (interpolated):  $f = 2402$  MHz;  $\sigma = 1.803$  S/m;  $\epsilon_r = 38.392$ ;  $\rho = 1000$  kg/m<sup>3</sup>

DASY5 Configuration:

- Area Scan Setting: Find Secondary Maximum Within: 2.0 dB and with a peak SAR value greater than 0.0012W/kg
- Electronics: DAE4 Sn1468; Calibrated: 2016-09-08
- Probe: EX3DV4 - SN7330; ConvF(7.44, 7.44, 7.44); Calibrated: 2016-02-24;
- Sensor-Surface: 2.5mm (Mechanical Surface Detection)
- Phantom: SAM (20deg probe tilt) with CRP v5.0(Middle); Type: QD000P40CD; Serial: TP:1847

**Next-to-Mouth/Bluetooth GFSK\_ch 0/Area Scan (8x8x1):** Measurement grid: dx=12mm, dy=12mm  
 Maximum value of SAR (measured) = 0.0945 W/kg

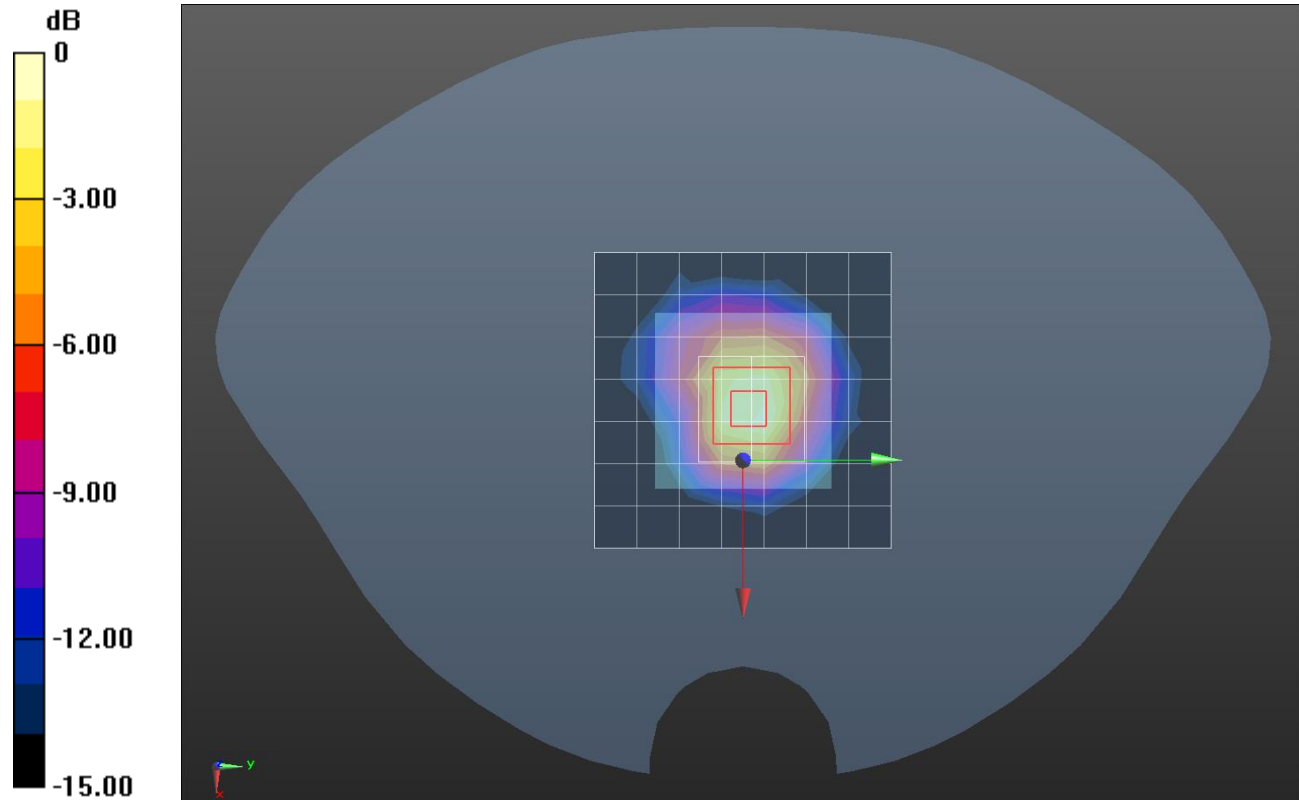
**Next-to-Mouth/Bluetooth GFSK\_ch 0/Zoom Scan (7x7x7)/Cube 0:** Measurement grid: dx=5mm, dy=5mm, dz=5mm

Reference Value = 7.296 V/m; Power Drift = 0.05 dB

Peak SAR (extrapolated) = 0.150 W/kg

**SAR(1 g) = 0.079 W/kg; SAR(10 g) = 0.036 W/kg**

Maximum value of SAR (measured) = 0.110 W/kg



0 dB = 0.110 W/kg = -9.59 dBW/kg

## Bluetooth

Frequency: 2402 MHz; Duty Cycle: 1:1.29033; Room Ambient Temperature: 23.0°C; Liquid Temperature: 22.0°C  
 Medium parameters used (interpolated):  $f = 2402$  MHz;  $\sigma = 1.958$  S/m;  $\epsilon_r = 52.031$ ;  $\rho = 1000$  kg/m<sup>3</sup>

DASY5 Configuration:

- Area Scan Setting: Find Secondary Maximum Within: 2.0 dB and with a peak SAR value greater than 0.0012W/kg
- Electronics: DAE4 Sn1468; Calibrated: 2016-09-08
- Probe: EX3DV4 - SN7330; ConvF(7.43, 7.43, 7.43); Calibrated: 2016-02-24;
- Sensor-Surface: 2.5mm (Mechanical Surface Detection)
- Phantom: Triple Flat Phantom 5.1C; Type: QD 000 P51 CA; Serial: 1166

**Extremity/Bluetooth GFSK\_ch 0/Area Scan (8x8x1):** Measurement grid: dx=12mm, dy=12mm  
 Maximum value of SAR (measured) = 0.197 W/kg

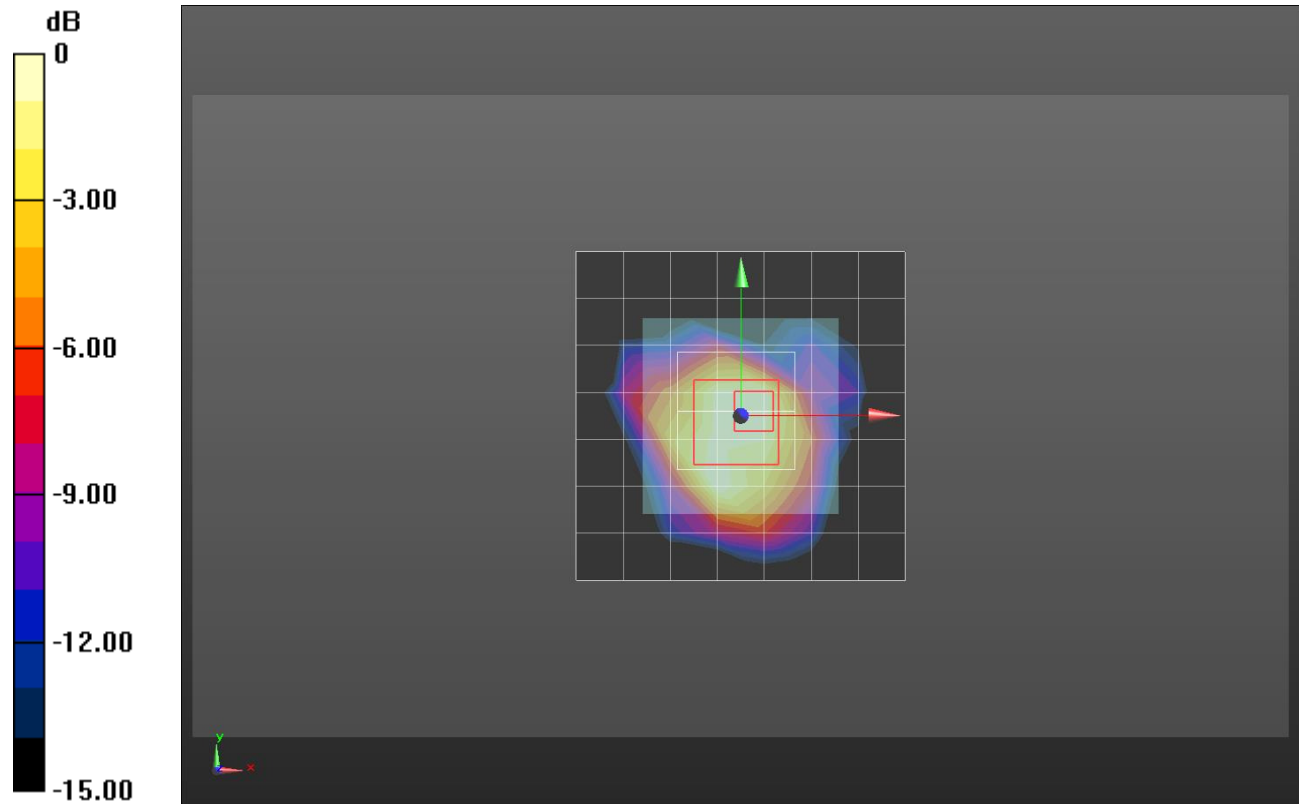
**Extremity/Bluetooth GFSK\_ch 0/Zoom Scan (7x7x7)/Cube 0:** Measurement grid: dx=5mm, dy=5mm, dz=5mm

Reference Value = 10.10 V/m; Power Drift = 0.13 dB

Peak SAR (extrapolated) = 0.292 W/kg

**SAR(1 g) = 0.166 W/kg; SAR(10 g) = 0.096 W/kg**

Maximum value of SAR (measured) = 0.202 W/kg



0 dB = 0.202 W/kg = -6.95 dBW/kg