

## LTE Band 5

Frequency: 836.5 MHz; Duty Cycle: 1:1; Room Ambient Temperature: 23.0°C; Liquid Temperature: 22.0°C  
 Medium parameters used (interpolated):  $f = 836.5$  MHz;  $\sigma = 0.897$  S/m;  $\epsilon_r = 41.436$ ;  $\rho = 1000$  kg/m<sup>3</sup>

DASY5 Configuration:

- Area Scan Setting: Find Secondary Maximum Within: 2.0 dB and with a peak SAR value greater than 0.0012W/kg
- Electronics: DAE4 Sn912; Calibrated: 2015-11-19
- Probe: EX3DV4 - SN7330; ConvF(9.93, 9.93, 9.93); Calibrated: 2016-02-24;
- Sensor-Surface: 2mm (Mechanical Surface Detection)
- Phantom: SAM (20deg probe tilt) with CRP v5.0(Right); Type: QD000P40CD; Serial: TP:xxxx

**Next-to-Mouth/QPSK RB 1/0 ch 20525/Area Scan (6x6x1):** Measurement grid: dx=15mm, dy=15mm  
 Maximum value of SAR (measured) = 0.0210 W/kg

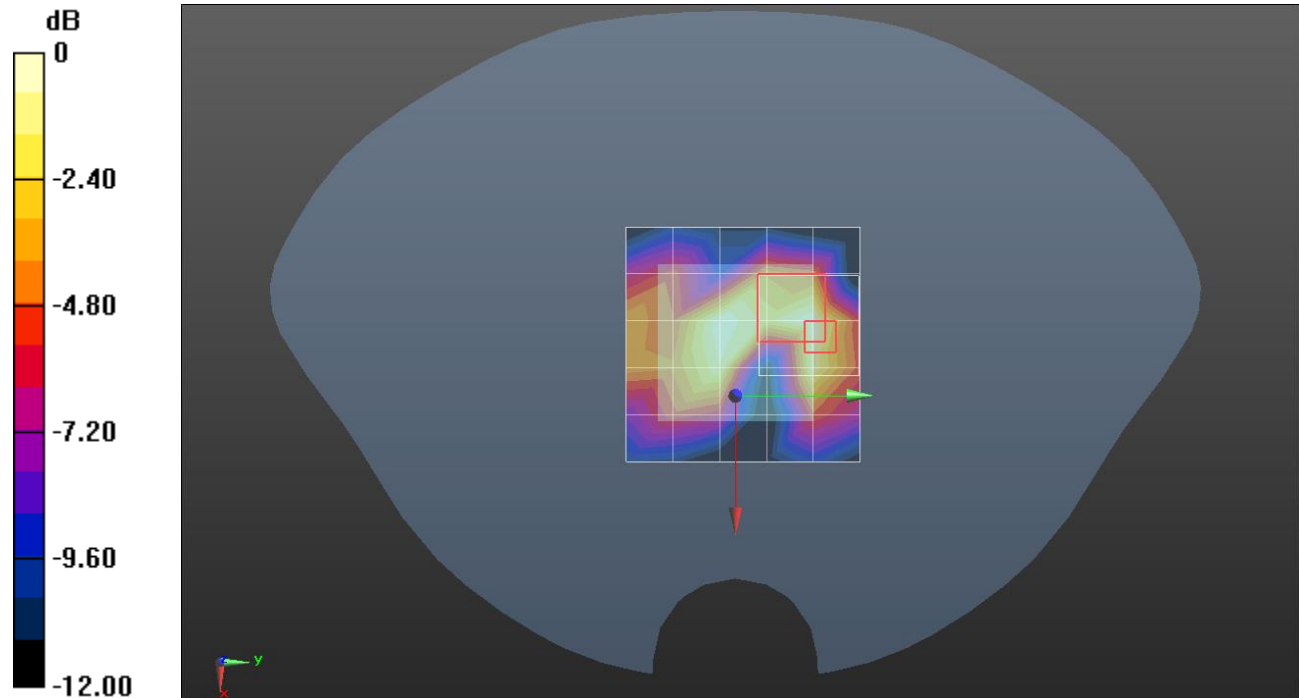
**Next-to-Mouth/QPSK RB 1/0 ch 20525/Zoom Scan (5x5x7)/Cube 0:** Measurement grid: dx=8mm, dy=8mm, dz=5mm

Reference Value = 4.996 V/m; Power Drift = 0.01 dB

Peak SAR (extrapolated) = 0.0630 W/kg

**SAR(1 g) = 0.015 W/kg; SAR(10 g) = 0.00512 W/kg**

Maximum value of SAR (measured) = 0.0207 W/kg



0 dB = 0.0207 W/kg = -16.84 dBW/kg

## LTE Band 5

Frequency: 836.5 MHz; Duty Cycle: 1:1; Room Ambient Temperature: 23.0°C; Liquid Temperature: 22.0°C  
 Medium parameters used (interpolated):  $f = 836.5$  MHz;  $\sigma = 0.966$  S/m;  $\epsilon_r = 53.516$ ;  $\rho = 1000$  kg/m<sup>3</sup>

DASY5 Configuration:

- Area Scan Setting: Find Secondary Maximum Within: 2.0 dB and with a peak SAR value greater than 0.0012W/kg
- Electronics: DAE4 Sn1494; Calibrated: 2016-07-18
- Probe: EX3DV4 - SN7313; ConvF(9.42, 9.42, 9.42); Calibrated: 2015-12-30;
- Sensor-Surface: 2mm (Mechanical Surface Detection)
- Phantom: Triple Flat Phantom 5.1C; Type: QD 000 P51 CA; Serial: 1166

**Extremity/QPSK RB 1/0 ch 20525/Area Scan (6x6x1):** Measurement grid: dx=15mm, dy=15mm  
 Maximum value of SAR (measured) = 0.575 W/kg

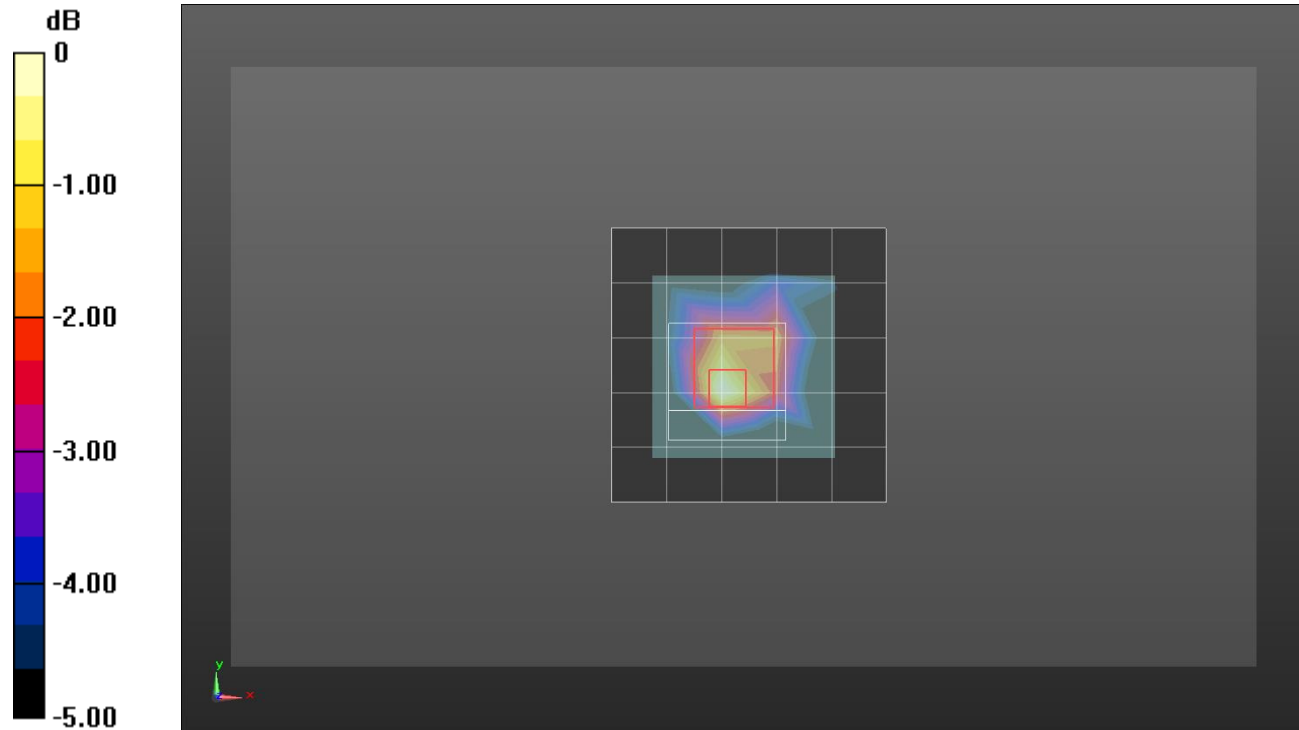
**Extremity/QPSK RB 1/0 ch 20525/Zoom Scan (5x5x7)/Cube 0:** Measurement grid: dx=8mm, dy=8mm, dz=5mm

Reference Value = 25.10 V/m; Power Drift = 0.01 dB

Peak SAR (extrapolated) = 0.816 W/kg

**SAR(1 g) = 0.422 W/kg; SAR(10 g) = 0.239 W/kg**

Maximum value of SAR (measured) = 0.556 W/kg



0 dB = 0.556 W/kg = -2.55 dBW/kg

## WiFi 2.4GHz

Frequency: 2412 MHz; Duty Cycle: 1:1; Room Ambient Temperature: 23.0°C; Liquid Temperature: 22.0°C  
 Medium parameters used (interpolated):  $f = 2412$  MHz;  $\sigma = 1.827$  S/m;  $\epsilon_r = 37.731$ ;  $\rho = 1000$  kg/m<sup>3</sup>

DASY5 Configuration:

- Area Scan Setting: Find Secondary Maximum Within: 2.0 dB and with a peak SAR value greater than 0.0012W/kg
- Electronics: DAE4 Sn912; Calibrated: 2015-11-19
- Probe: EX3DV4 - SN7330; ConvF(7.44, 7.44, 7.44); Calibrated: 2016-02-24;
- Sensor-Surface: 2mm (Mechanical Surface Detection)
- Phantom: SAM (20deg probe tilt) with CRP v5.0(Middle); Type: QD000P40CD; Serial: TP:1847

**Next-to-Mouth/802.11b\_ch 1/Area Scan (7x7x1):** Measurement grid: dx=12mm, dy=12mm

Maximum value of SAR (measured) = 0.358 W/kg

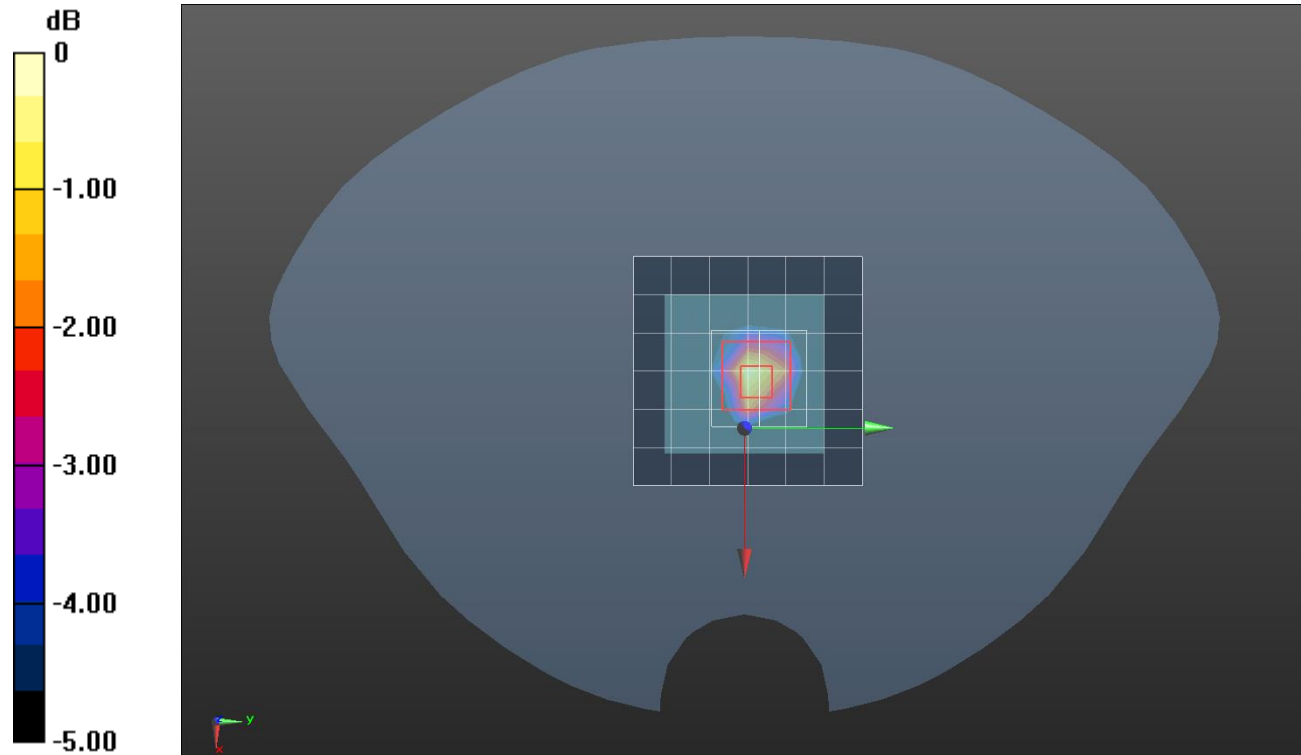
**Next-to-Mouth/802.11b\_ch 1/Zoom Scan (7x7x7)/Cube 0:** Measurement grid: dx=5mm, dy=5mm, dz=5mm

Reference Value = 14.08 V/m; Power Drift = -0.14 dB

Peak SAR (extrapolated) = 0.483 W/kg

**SAR(1 g) = 0.271 W/kg; SAR(10 g) = 0.127 W/kg**

Maximum value of SAR (measured) = 0.383 W/kg



0 dB = 0.383 W/kg = -4.17 dBW/kg

## WiFi 2.4GHz

Frequency: 2412 MHz; Duty Cycle: 1:1; Room Ambient Temperature: 23.0°C; Liquid Temperature: 22.0°C  
 Medium parameters used (interpolated):  $f = 2412$  MHz;  $\sigma = 1.989$  S/m;  $\epsilon_r = 53.166$ ;  $\rho = 1000$  kg/m<sup>3</sup>

DASY5 Configuration:

- Area Scan Setting: Find Secondary Maximum Within: 2.0 dB and with a peak SAR value greater than 0.0012W/kg
- Electronics: DAE4 Sn912; Calibrated: 2015-11-19
- Probe: EX3DV4 - SN7330; ConvF(7.43, 7.43, 7.43); Calibrated: 2016-02-24;
- Sensor-Surface: 2mm (Mechanical Surface Detection)
- Phantom: ELI v6.0; Type: QDOVA003AA; Serial: TP:xxxx

**Extremity/802.11b\_ch 1/Area Scan (7x7x1):** Measurement grid: dx=12mm, dy=12mm

Maximum value of SAR (measured) = 0.633 W/kg

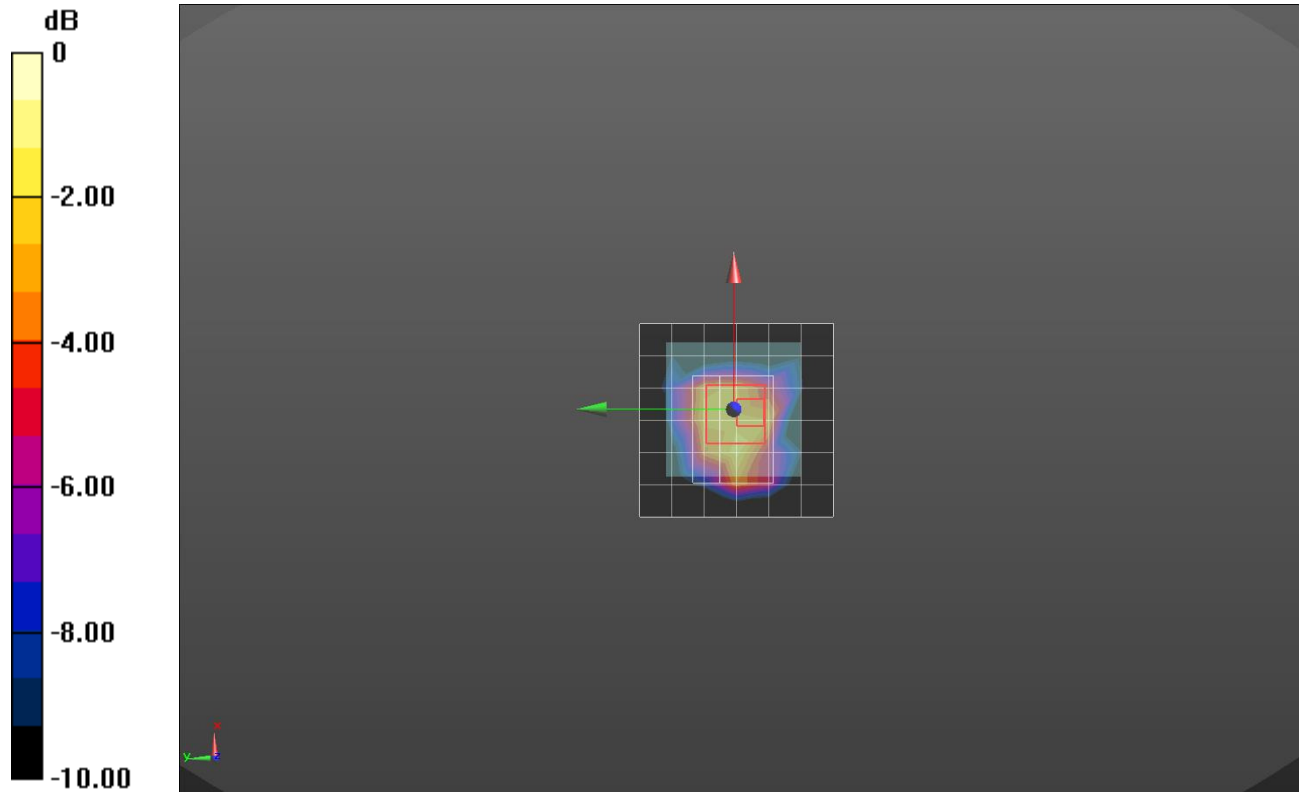
**Extremity/802.11b\_ch 1/Zoom Scan (9x7x7)/Cube 0:** Measurement grid: dx=5mm, dy=5mm, dz=5mm

Reference Value = 18.08 V/m; Power Drift = 0.15 dB

Peak SAR (extrapolated) = 1.67 W/kg

**SAR(1 g) = 0.506 W/kg; SAR(10 g) = 0.294 W/kg**

Maximum value of SAR (measured) = 0.921 W/kg



0 dB = 0.921 W/kg = -0.36 dBW/kg

## Bluetooth

Frequency: 2402 MHz; Duty Cycle: 1:1.29033; Room Ambient Temperature: 23.0°C; Liquid Temperature: 22.0°C  
 Medium parameters used (interpolated):  $f = 2402$  MHz;  $\sigma = 1.815$  S/m;  $\epsilon_r = 37.766$ ;  $\rho = 1000$  kg/m<sup>3</sup>

DASY5 Configuration:

- Area Scan Setting: Find Secondary Maximum Within: 2.0 dB and with a peak SAR value greater than 0.0012W/kg
- Electronics: DAE4 Sn912; Calibrated: 2015-11-19
- Probe: EX3DV4 - SN7330; ConvF(7.44, 7.44, 7.44); Calibrated: 2016-02-24;
- Sensor-Surface: 2mm (Mechanical Surface Detection)
- Phantom: SAM (20deg probe tilt) with CRP v5.0(Middle); Type: QD000P40CD; Serial: TP:1847

**Next-to-Mouth/Bluetooth GFSK\_ch 0/Area Scan (7x7x1):** Measurement grid: dx=12mm, dy=12mm

Maximum value of SAR (measured) = 0.0160 W/kg

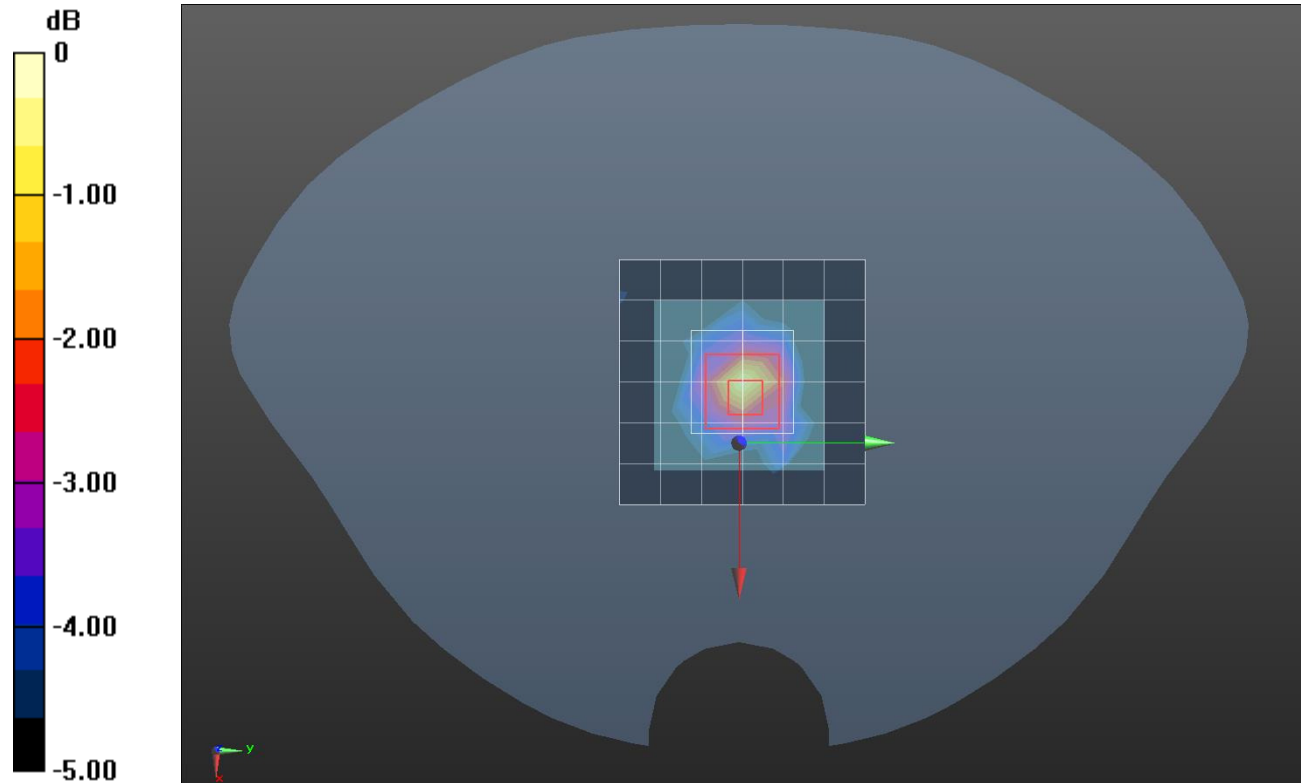
**Next-to-Mouth/Bluetooth GFSK\_ch 0/Zoom Scan (7x7x7)/Cube 0:** Measurement grid: dx=5mm, dy=5mm, dz=5mm

Reference Value = 2.809 V/m; Power Drift = -0.13 dB

Peak SAR (extrapolated) = 0.0460 W/kg

**SAR(1 g) = 0.00741 W/kg; SAR(10 g) = 0.0027 W/kg**

Maximum value of SAR (measured) = 0.0176 W/kg



0 dB = 0.0176 W/kg = -17.54 dBW/kg

## Bluetooth

Frequency: 2402 MHz; Duty Cycle: 1:1.29033; Room Ambient Temperature: 23.0°C; Liquid Temperature: 22.0°C  
 Medium parameters used (interpolated):  $f = 2402$  MHz;  $\sigma = 1.908$  S/m;  $\epsilon_r = 52.27$ ;  $\rho = 1000$  kg/m<sup>3</sup>

DASY5 Configuration:

- Area Scan Setting: Find Secondary Maximum Within: 2.0 dB and with a peak SAR value greater than 0.0012W/kg
- Electronics: DAE4 Sn912; Calibrated: 2015-11-19
- Probe: EX3DV4 - SN7330; ConvF(7.43, 7.43, 7.43); Calibrated: 2016-02-24;
- Sensor-Surface: 2mm (Mechanical Surface Detection)
- Phantom: ELI v6.0; Type: QDOVA003AA; Serial: TP:xxxx

**Extremity/Bluetooth GFSK\_ ch 0/Area Scan (7x7x1):** Measurement grid: dx=12mm, dy=12mm

Maximum value of SAR (measured) = 0.128 W/kg

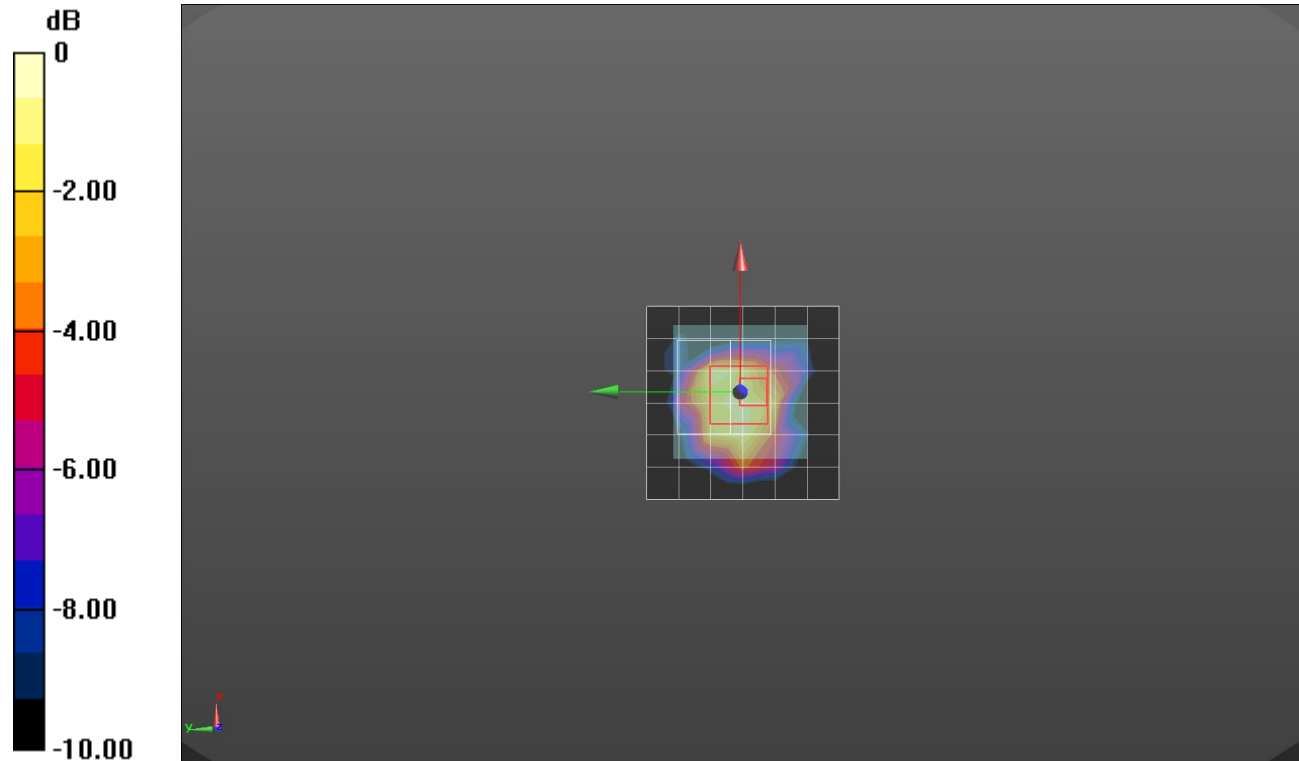
**Extremity/Bluetooth GFSK\_ ch 0/Zoom Scan (8x8x7)/Cube 0:** Measurement grid: dx=5mm, dy=5mm, dz=5mm

Reference Value = 8.160 V/m; Power Drift = 0.15 dB

Peak SAR (extrapolated) = 0.263 W/kg

**SAR(1 g) = 0.110 W/kg; SAR(10 g) = 0.063 W/kg**

Maximum value of SAR (measured) = 0.158 W/kg



0 dB = 0.158 W/kg = -8.01 dBW/kg