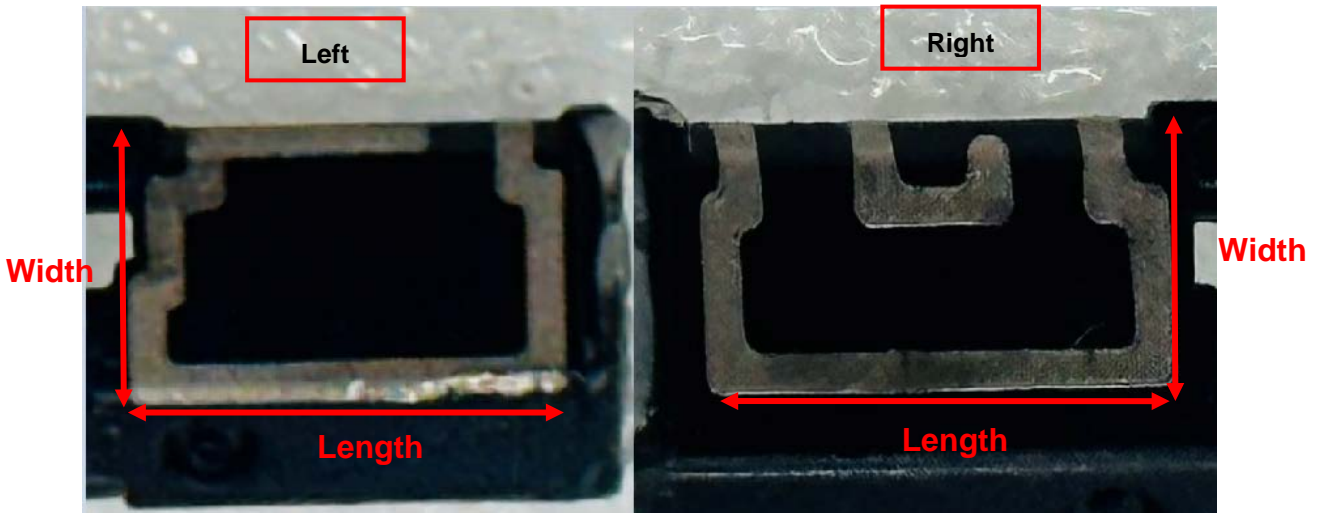


Antenna Information

Item	Contents	
Antenna Type	LDS Antenna	
Antenna peak gain	Right	-4.91 dBi
	Left	-4.91 dBi
Manufacturer / Model name	Right	Partron / SM-R530 Right
	Left	Partron / SM-R530 Left
Address of manufacturer	22, Samsung 1-ro 2-gil, Hwaseong-si, Gyeonggi-do, Republic of Korea	
Test Laboratory	Partron	
Left Antenna Length	0.7 cm	
Left Antenna Width	0.4 cm	
Right Antenna Length	0.7 cm	
Right Antenna Width	0.4 cm	

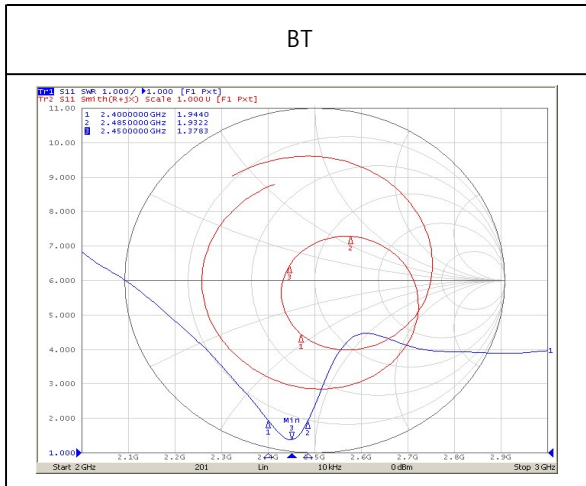


Model name: SM-R530

SM-R530 (Left)

3. SET Electrical Characteristics

3.1 VSWR



Frequency [MHz]	2400	2485
VSWR / SET	1.94	1.93
input impedance	50 ohm	
polarization	vertically polarized wave	
Radiation Feature	Non-Directional	

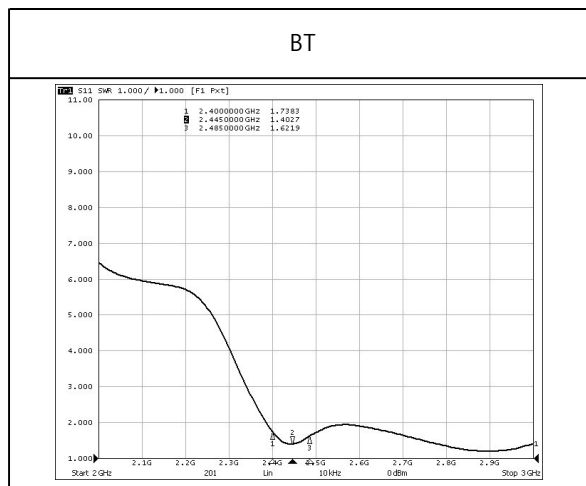
3.2 3D Radiation Pattern

주파수대역 (Frequency Band)	BT	
	2400 MHz	2485 MHz
3D Radiation Pattern		
Avg Gain [dBi]	-5.22	
Efficiency [%]	30.00	
Peak Gain [dBi]	-4.91	

SM-R530 (Right)

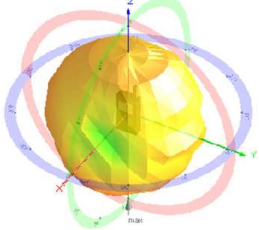
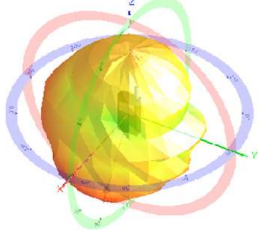
3. SET Electrical Characteristics

3.1 VSWR



Frequency [MHz]	2400	2485
VSWR / SET	1.73	1.62
input impedance	50 ohm	
polarization	vertically polarized wave	
Radiation Feature	Non-Directional	

3.2 3D Radiation Pattern

주파수대역 (Frequency Band)	BT	
	2400 MHz	2485 MHz
3D Radiation Pattern		
Avg Gain [dBi]	-5.76	
Efficiency [%]	26.5	
Peak Gain [dBi]	-4.91	