

Bluetooth

Frequency: 2441 MHz; Duty Cycle: 1:1.29033; Room Ambient Temperature: 23.0°C; Liquid Temperature: 22.0°C
 Medium parameters used (interpolated): $f = 2441$ MHz; $\sigma = 1.826$ S/m; $\epsilon_r = 38.537$; $\rho = 1000$ kg/m³

DASY5 Configuration:

- Area Scan Setting: Find Secondary Maximum Within: 2.0 dB and with a peak SAR value greater than 0.0012W/kg
- Electronics: DAE4 Sn912; Calibrated: 2016-11-18
- Probe: EX3DV4 - SN7314; ConvF(7.42, 7.42, 7.42); Calibrated: 2016-09-27;
- Sensor-Surface: 2.5mm (Mechanical Surface Detection)
- Phantom: SAM Phantom CRP v5.0(Middle); Type: QD000P40CD; Serial: TP:1854

Bluetooth GFSK_ch 39/Area Scan (8x5x1): Measurement grid: dx=12mm, dy=12mm

Maximum value of SAR (measured) = 0.0331 W/kg

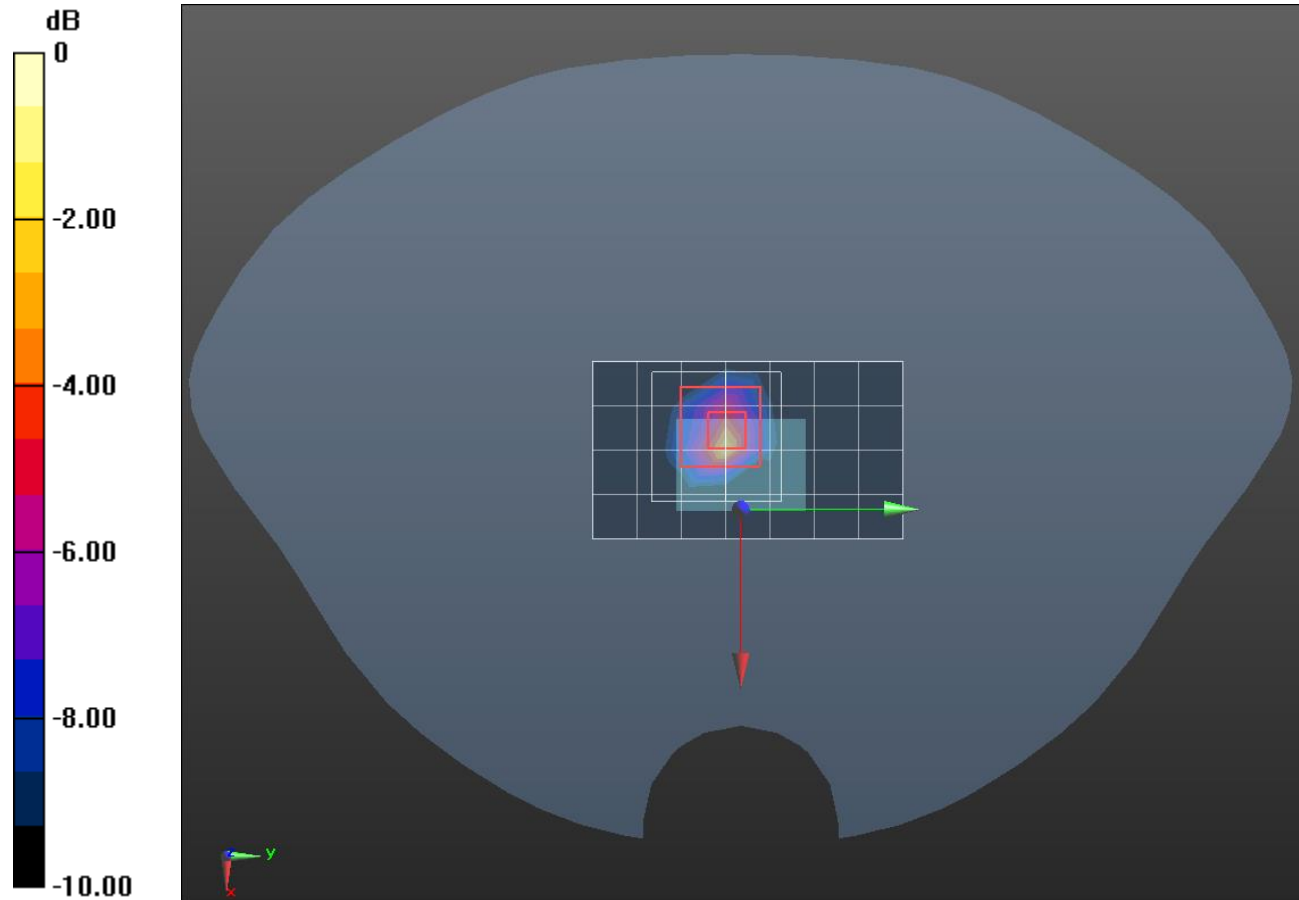
Bluetooth GFSK_ch 39/Zoom Scan (8x8x7)/Cube 0: Measurement grid: dx=5mm, dy=5mm, dz=5mm

Reference Value = 4.065 V/m; Power Drift = 0.08 dB

Peak SAR (extrapolated) = 0.0850 W/kg

SAR(1 g) = 0.026 W/kg; SAR(10 g) = 0.0057 W/kg

Maximum value of SAR (measured) = 0.0578 W/kg



0 dB = 0.0578 W/kg = -12.38 dBW/kg