

20200326_SystemPerformanceCheck-D2450V2 SN 939

Frequency: 2450 MHz; Duty Cycle: 1:1; Room Ambient Temperature: 23.0°C; Liquid Temperature: 22.0°C
 Medium parameters used (interpolated): $f = 2450$ MHz; $\sigma = 1.878$ S/m; $\epsilon_r = 39.681$; $\rho = 1000$ kg/m³

DASY5 Configuration:

- Area Scan Setting: Find Secondary Maximum Within: 2.0 dB and with a peak SAR value greater than 0.0012W/kg
- Averaged Fast SAR: Polynomial fit
- Electronics: DAE4 Sn1591; Calibrated: 2019-09-11
- Probe: EX3DV4 - SN7545; ConvF(7.17, 7.17, 7.17) @ 2450 MHz; Calibrated: 2019-09-23
- Sensor-Surface: 2.5mm (Mechanical Surface Detection)
- Phantom: ELI V6.0 (20deg probe tilt) (Left); Type: QD OVA 003 AA; Serial: 2111

Head/Pin=100 mW/Area Scan (8x8x1): Measurement grid: dx=12mm, dy=12mm
 Maximum value of SAR (measured) = 6.20 W/kg

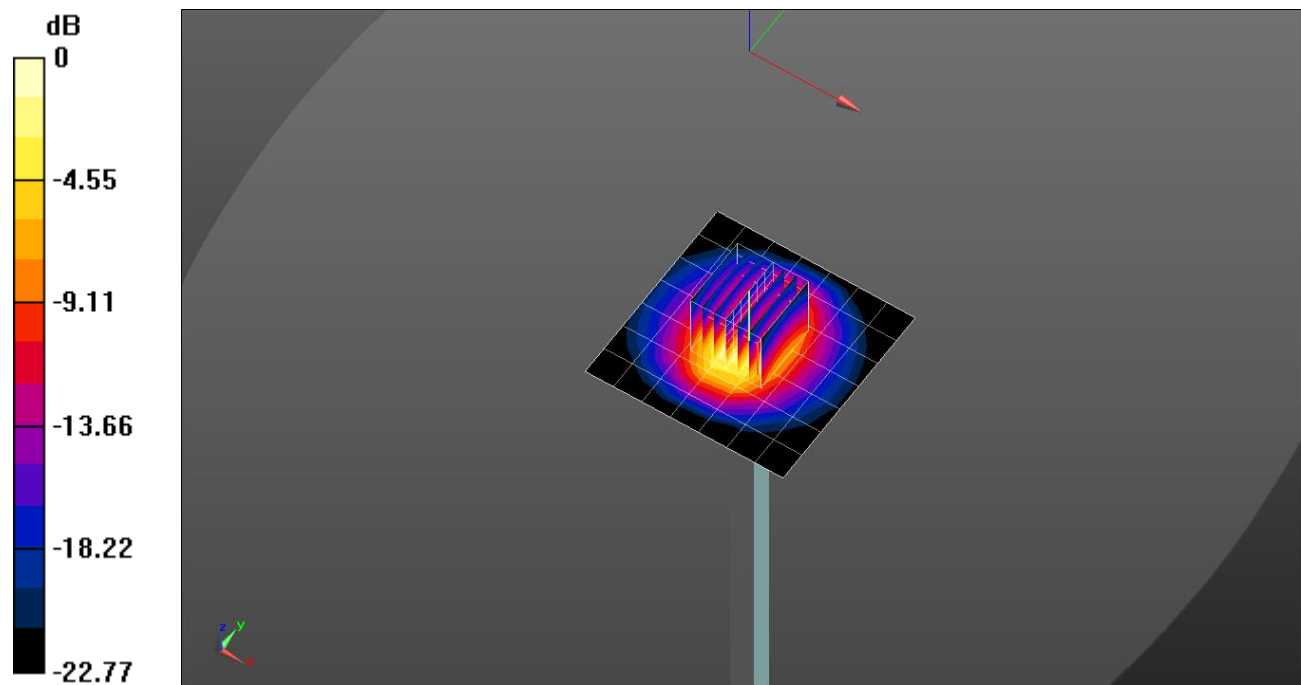
Head/Pin=100 mW/Zoom Scan (7x7x7) (7x7x7)/Cube 0: Measurement grid: dx=5mm, dy=5mm, dz=5mm

Reference Value = 64.15 V/m; Power Drift = 0.01 dB

Peak SAR (extrapolated) = 11.3 W/kg

SAR(1 g) = 5.26 W/kg; SAR(10 g) = 2.42 W/kg

Maximum value of SAR (measured) = 7.56 W/kg



0 dB = 7.56 W/kg = 8.79 dBW/kg

20200326_SystemPerformanceCheck-D2450V2 SN 939

Frequency: 2450 MHz; Duty Cycle: 1:1

Head/Pin=100 mW/Z Scan (1x1x21): Measurement grid: dx=20mm, dy=20mm, dz=5mm
Maximum value of SAR (measured) = 7.55 W/kg

