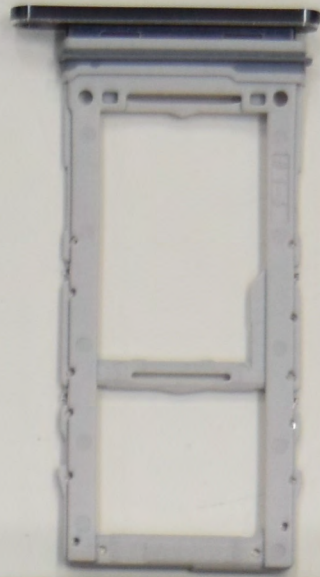




A564B



A564B

AMB675TG01
REV3.2
BH1916 6

18
le
S/--B

SAMSUNG
CELL MADE IN CHINA, A
BATTERIE FABRIQUÉ EN
Manufactured by ITM S
越南製造 / 越南製

Secondary Li-ion B
Model / 型号 / 型
Nominal Voltage
Rated Capacity
Typical Capacity
CQC standard

次鋰電池組
정격 : 3.85 V=
용량 : 4170 mAh, 16.05 Wh
Charge Voltage / 充電限制電壓 : 4.40 V=
A/S 연락처 : 1588-3366

1ICP6/59/78

IS 16046/
IEC 62133

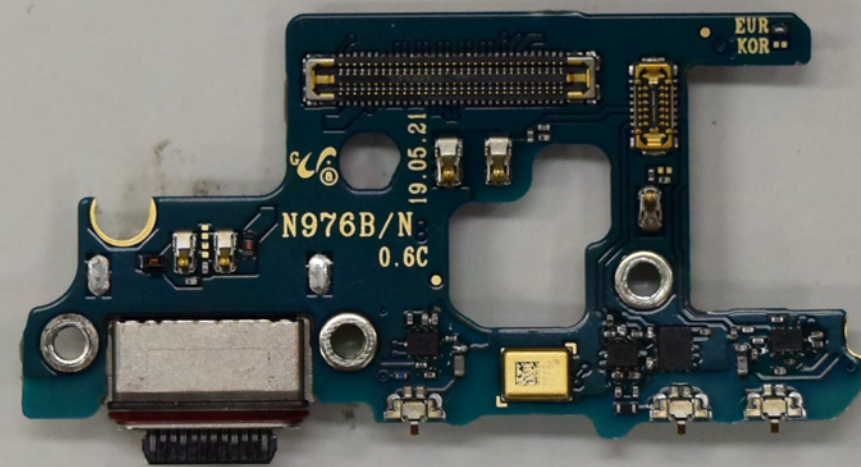
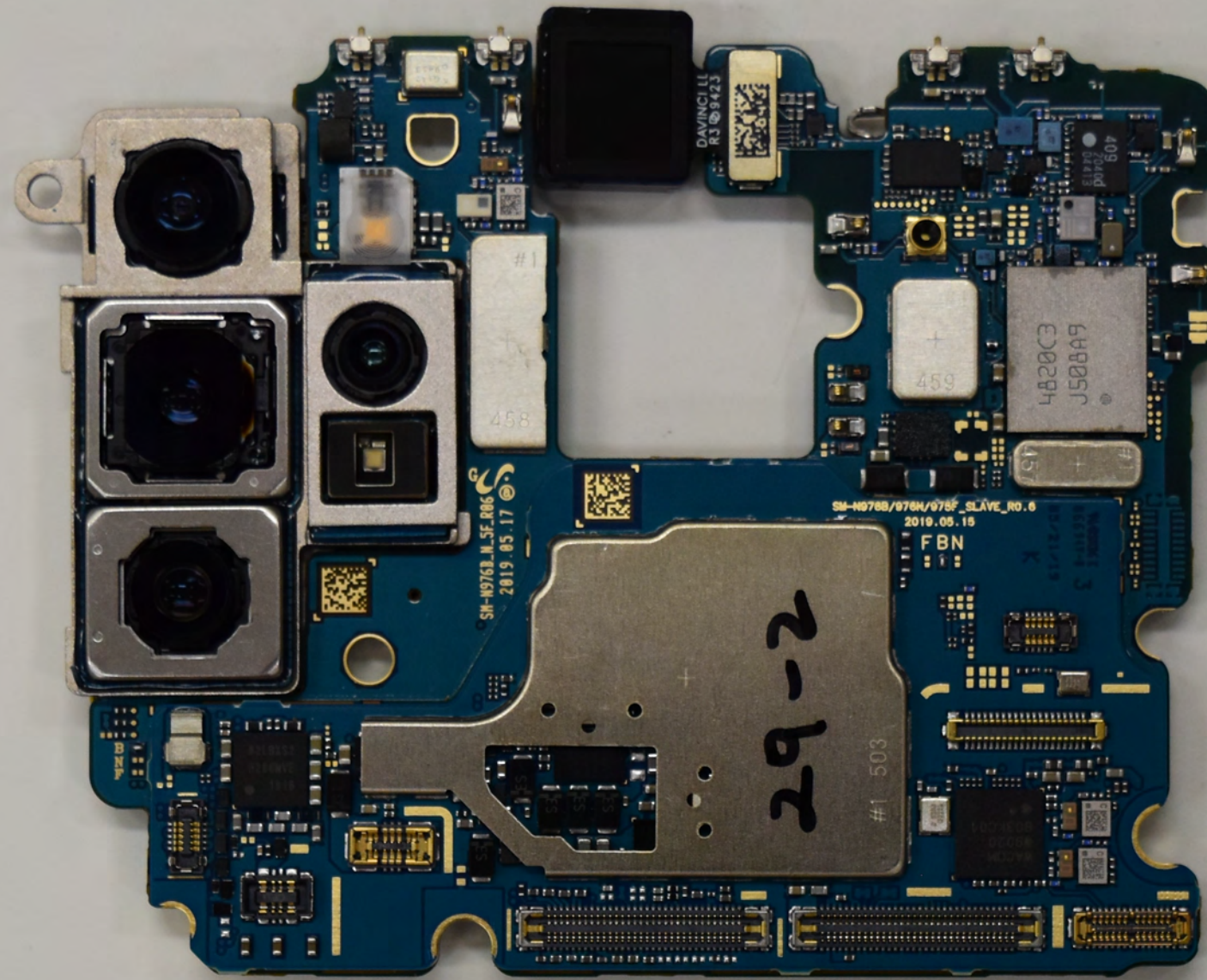
US
MH29581
V-I

Li-ion00

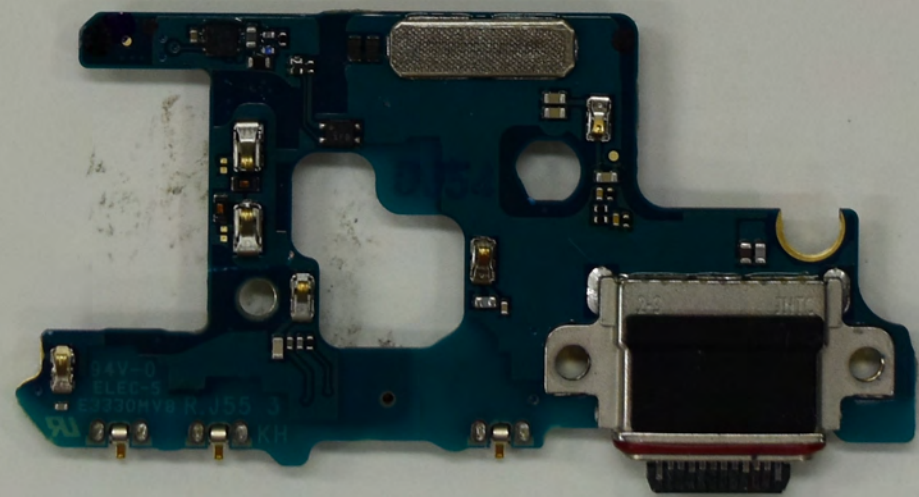
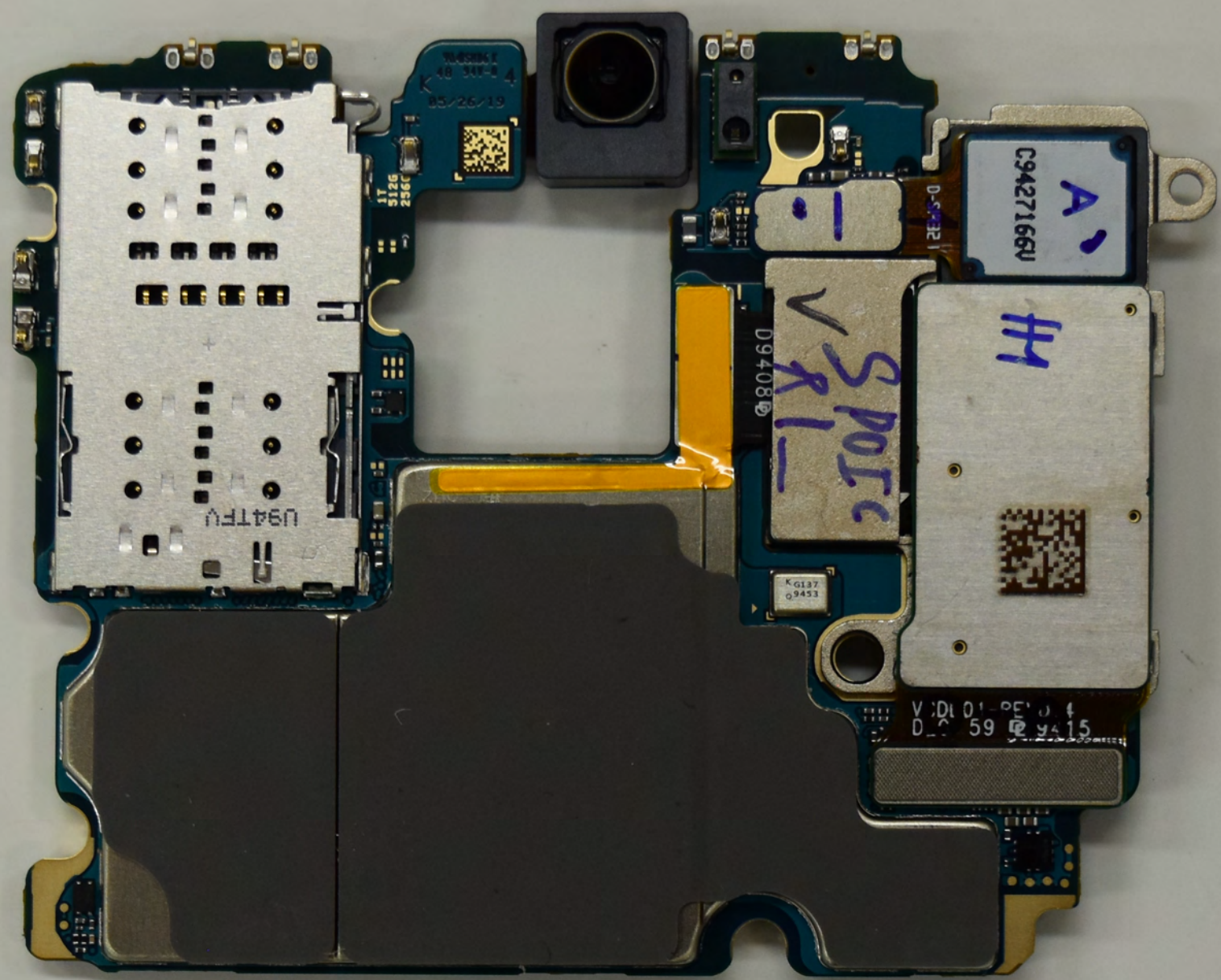
YU10715
-19004
R-41074438
www.bis.gov.in

assemble, crush, puncture, heat,
ized Service Provider Only.
穿刺、燃燒或重复使用。

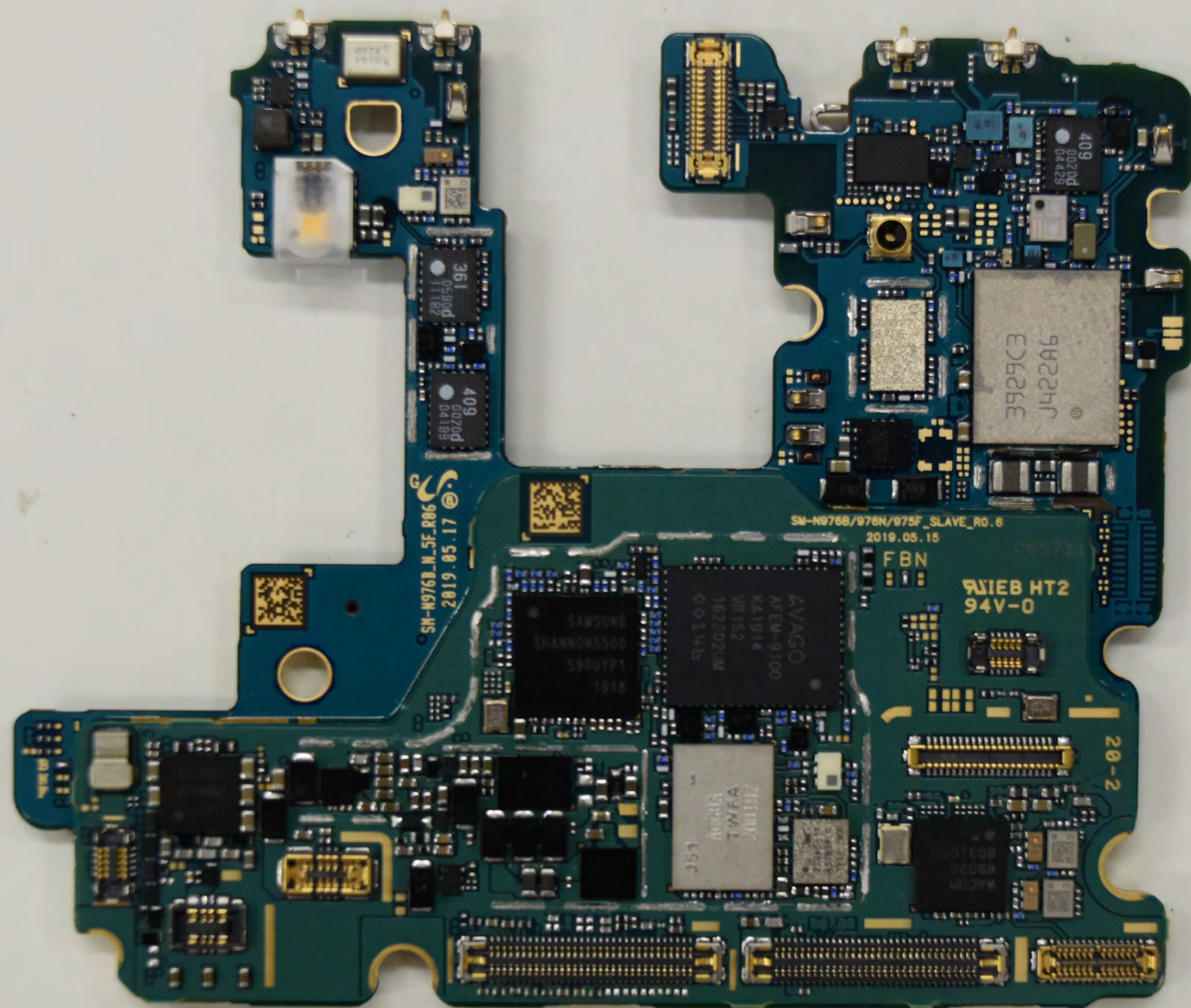
CQC R39088



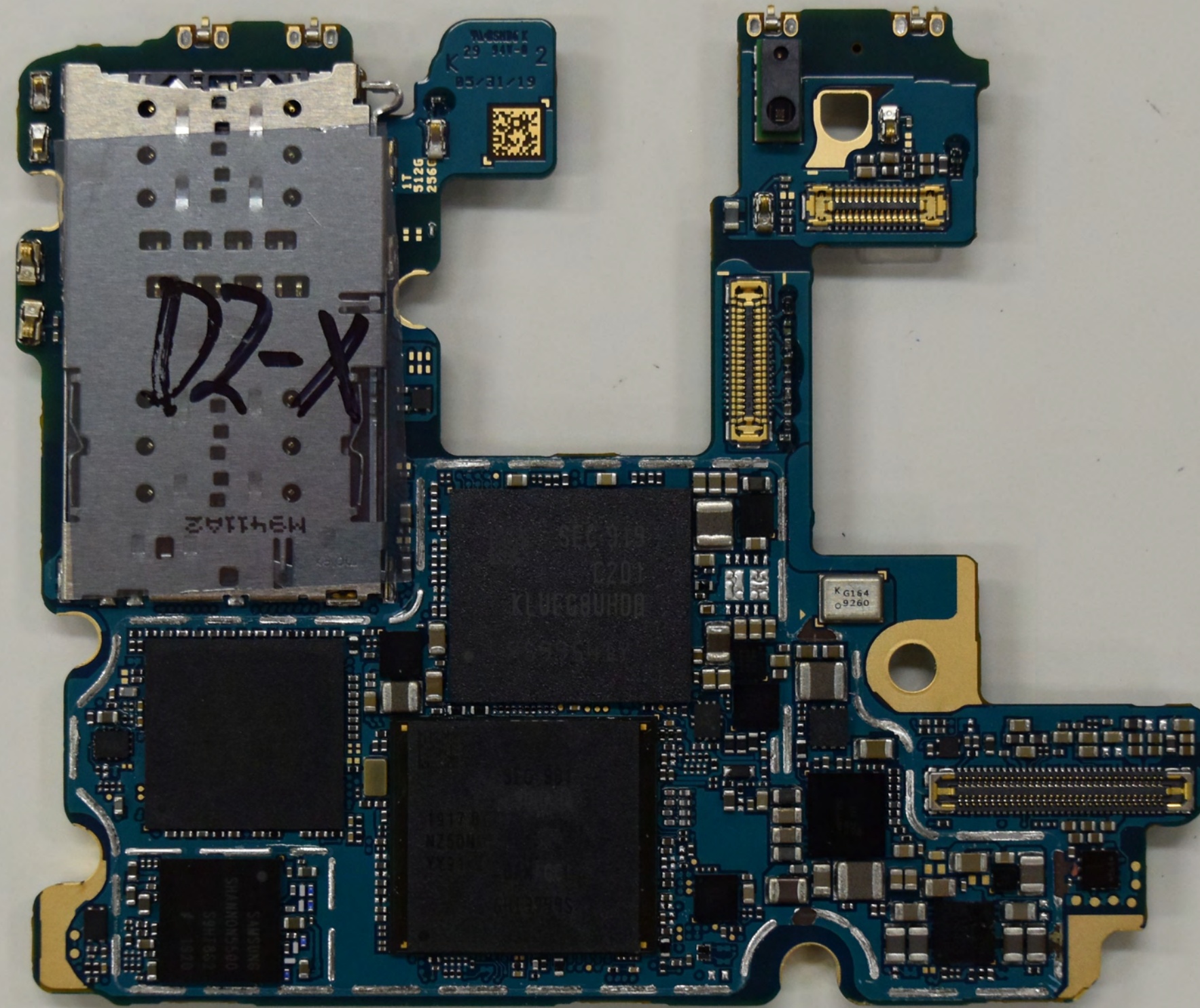
A564B



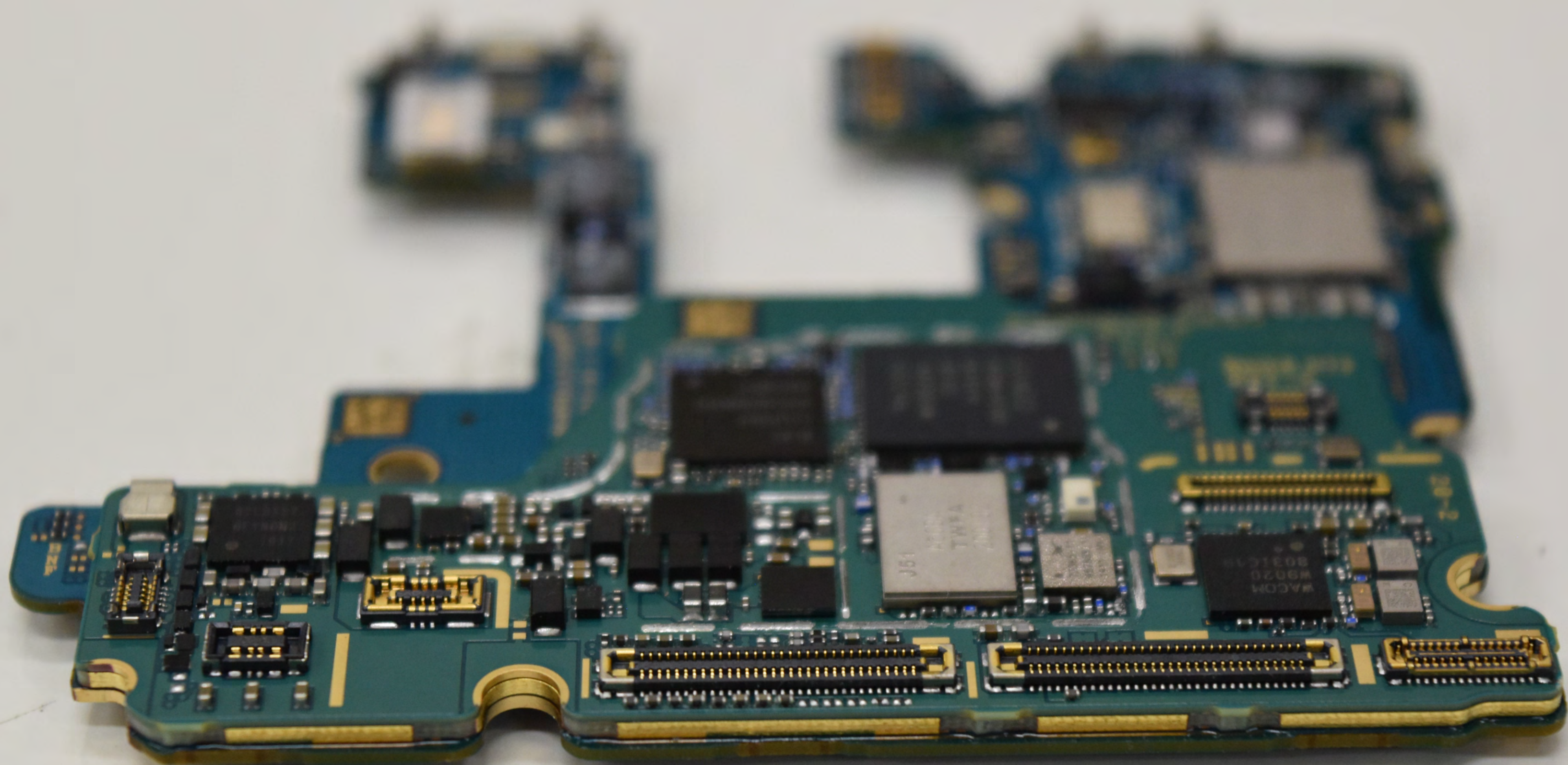
A564B



A564B



A564B



A564B