

## 20131029\_SystemPerformanceCheck-D1900V2 SN 5d140

Frequency: 1900 MHz; Duty Cycle: 1:1; Room Ambient Temperature: 24.0°C; Liquid Temperature: 23.0°C

Medium parameters used:  $f = 1900$  MHz;  $\sigma = 1.553$  S/m;  $\epsilon_r = 51.803$ ;  $\rho = 1000$  kg/m<sup>3</sup>

DASY5 Configuration:

- Area Scan Setting: Find Secondary Maximum Within: 2.0 dB and with a peak SAR value greater than 0.0012W/kg
- Electronics: DAE4 Sn1239; Calibrated: 4/9/2013
- Probe: EX3DV4 - SN3749; ConvF(6.99, 6.99, 6.99); Calibrated: 1/15/2013;
- Sensor-Surface: 2.5mm (Mechanical Surface Detection)
- Phantom: ELI v5.0 (B); Type: QDOVA001BB; Serial: 1099

**Body/Pin=100 mW/Area Scan (61x61x1):** Interpolated grid: dx=1.500 mm, dy=1.500 mm

Reference Value = 50.699 V/m; Power Drift = -0.01 dB

**Fast SAR: SAR(1 g) = 4.51 W/kg; SAR(10 g) = 2.26 W/kg**

Maximum value of SAR (interpolated) = 6.03 W/kg

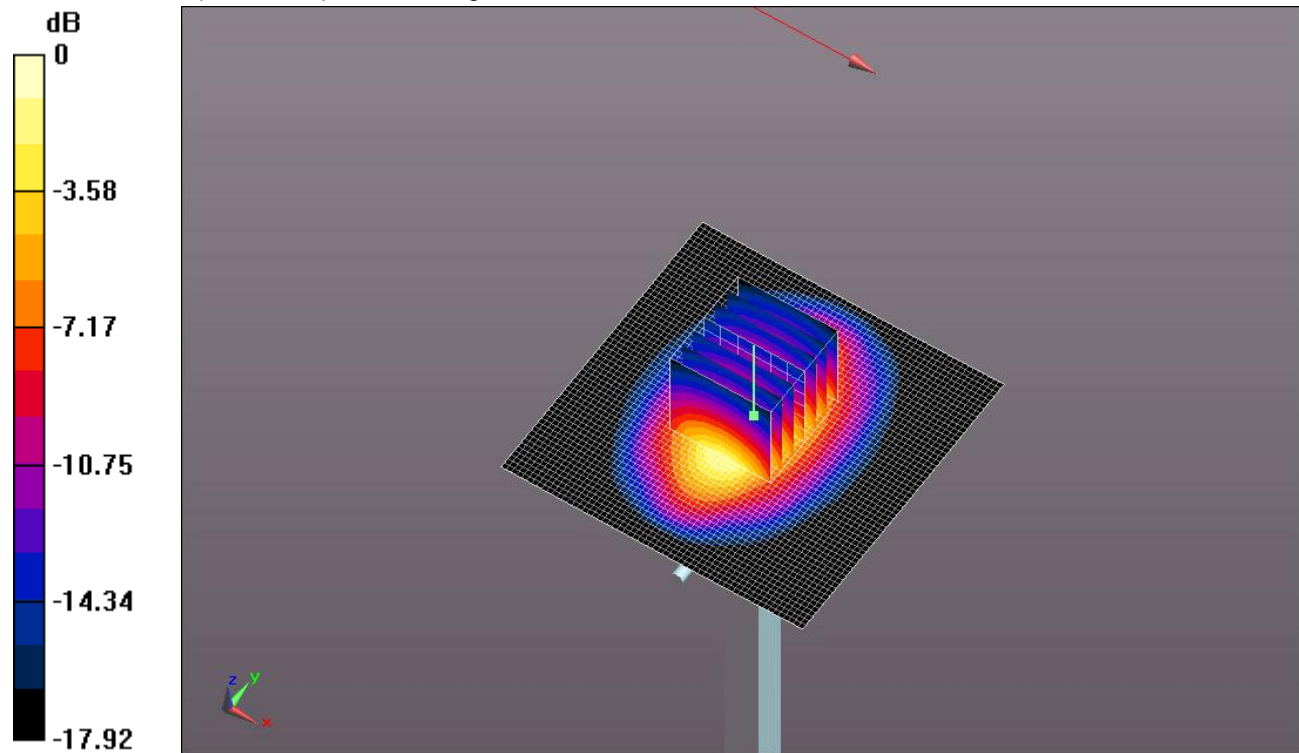
**Body/Pin=100 mW/Zoom Scan (7x7x7)/Cube 0:** Measurement grid: dx=5mm, dy=5mm, dz=5mm

Reference Value = 50.699 V/m; Power Drift = -0.01 dB

Peak SAR (extrapolated) = 8.14 W/kg

**SAR(1 g) = 4.4 W/kg; SAR(10 g) = 2.26 W/kg**

Maximum value of SAR (measured) = 5.98 W/kg

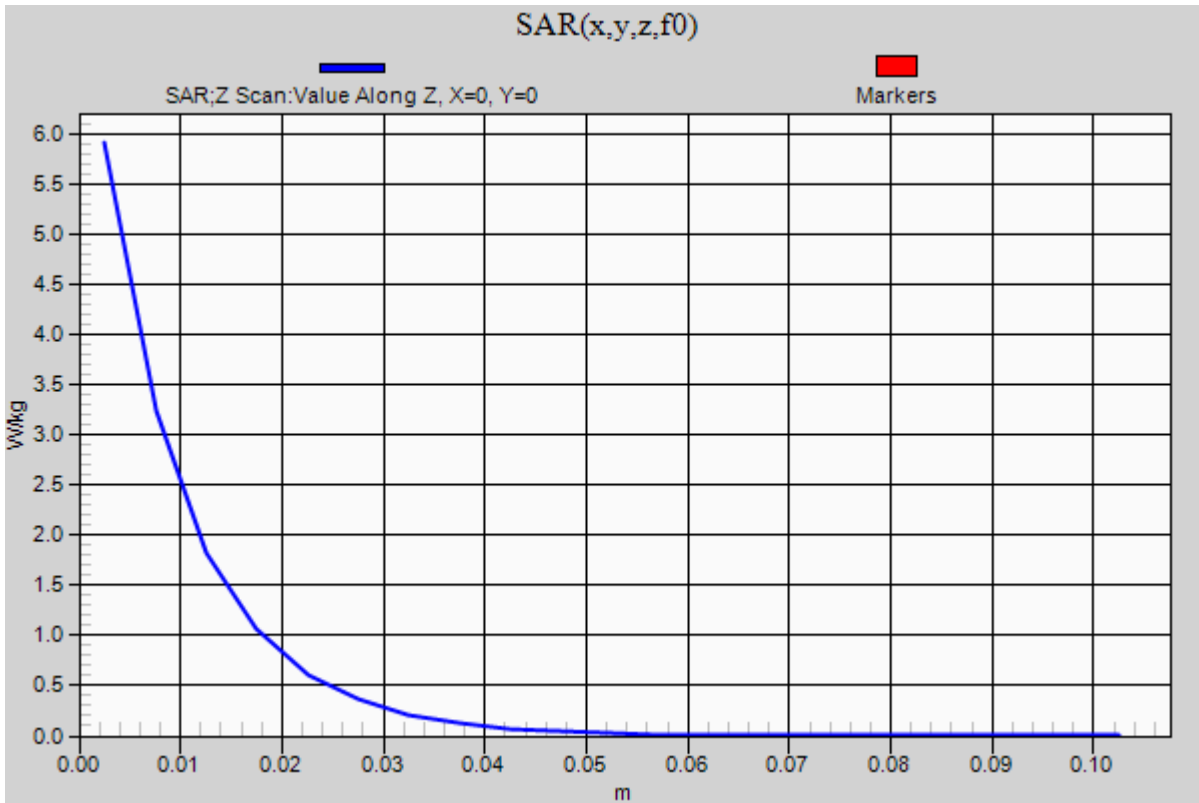


0 dB = 5.98 W/kg = 7.77 dBW/kg

### 20131029\_SystemPerformanceCheck-D1900V2 SN 5d140

Frequency: 1900 MHz; Duty Cycle: 1:1

**Body/Pin=100 mW/Z Scan (1x1x21):** Measurement grid: dx=20mm, dy=20mm, dz=5mm  
Maximum value of SAR (measured) = 5.92 W/kg



### SAR-D\_SystemPerformanceCheck-D2450V2 SN 899

Frequency: 2450 MHz; Duty Cycle: 1:1; Room Ambient Temperature: 24.0°C; Liquid Temperature: 23.0°C

Medium parameters used:  $f = 2450$  MHz;  $\sigma = 1.941$  S/m;  $\epsilon_r = 51.032$ ;  $\rho = 1000$  kg/m<sup>3</sup>

DASY5 Configuration:

- Area Scan Setting: Find Secondary Maximum Within: 2.0 dB and with a peak SAR value greater than 0.0012W/kg
- Averaged Fast SAR: Polynomial fit
- Electronics: DAE4 Sn1360; Calibrated: 2/7/2013
- Probe: EX3DV4 - SN3686; ConvF(6.92, 6.92, 6.92); Calibrated: 3/11/2013;
- Sensor-Surface: 2.5mm (Mechanical Surface Detection)
- Phantom: ELI A v5.0; Type: QDOVA002AA; Serial: 1193

**Body/Pin=100 mW/Area Scan (71x71x1):** Interpolated grid: dx=1.200 mm, dy=1.200 mm

Reference Value = 62.043 V/m; Power Drift = 0.07 dB

**Fast SAR: SAR(1 g) = 5.22 W/kg; SAR(10 g) = 2.26 W/kg**

Maximum value of SAR (interpolated) = 7.68 W/kg

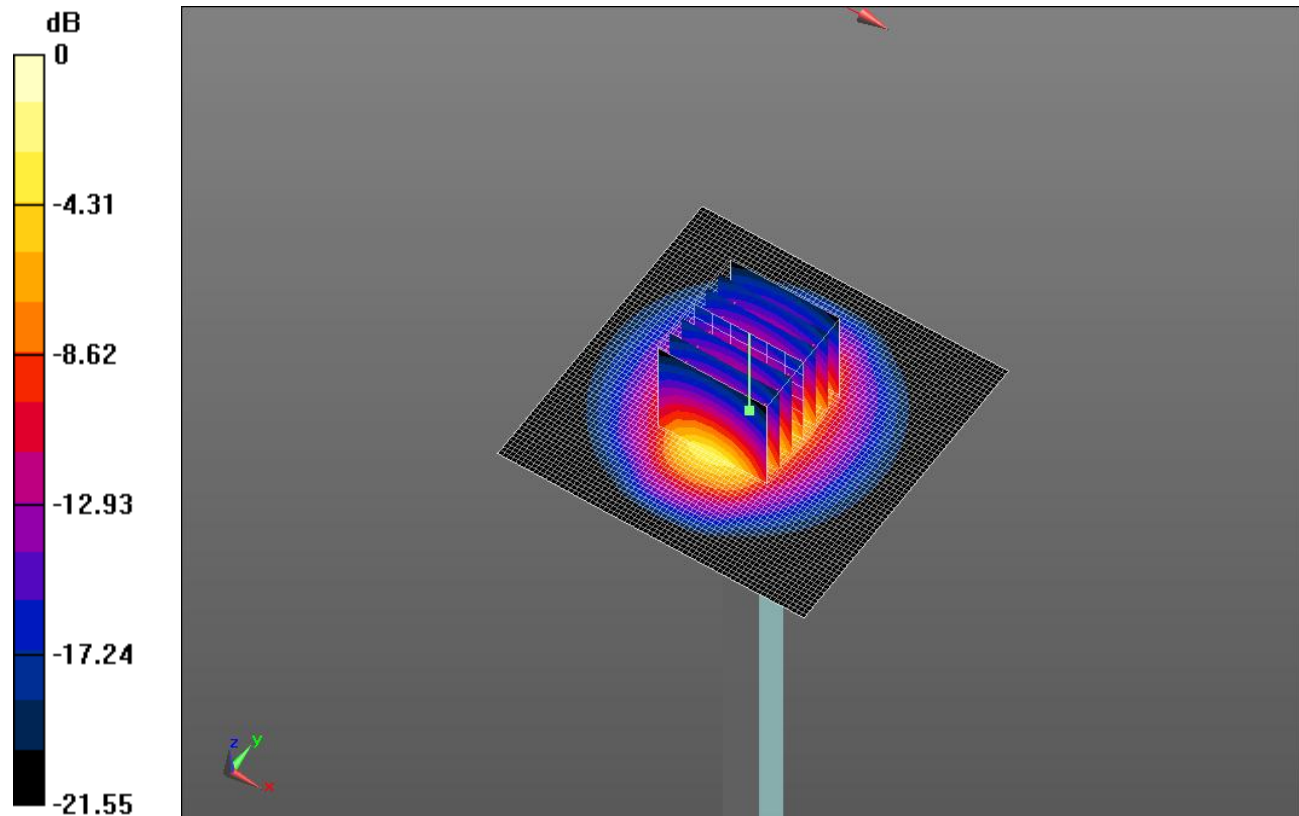
**Body/Pin=100 mW/Zoom Scan (7x7x7)/Cube 0:** Measurement grid: dx=5mm, dy=5mm, dz=5mm

Reference Value = 62.043 V/m; Power Drift = 0.07 dB

Peak SAR (extrapolated) = 10.8 W/kg

**SAR(1 g) = 5.27 W/kg; SAR(10 g) = 2.44 W/kg**

Maximum value of SAR (measured) = 7.50 W/kg

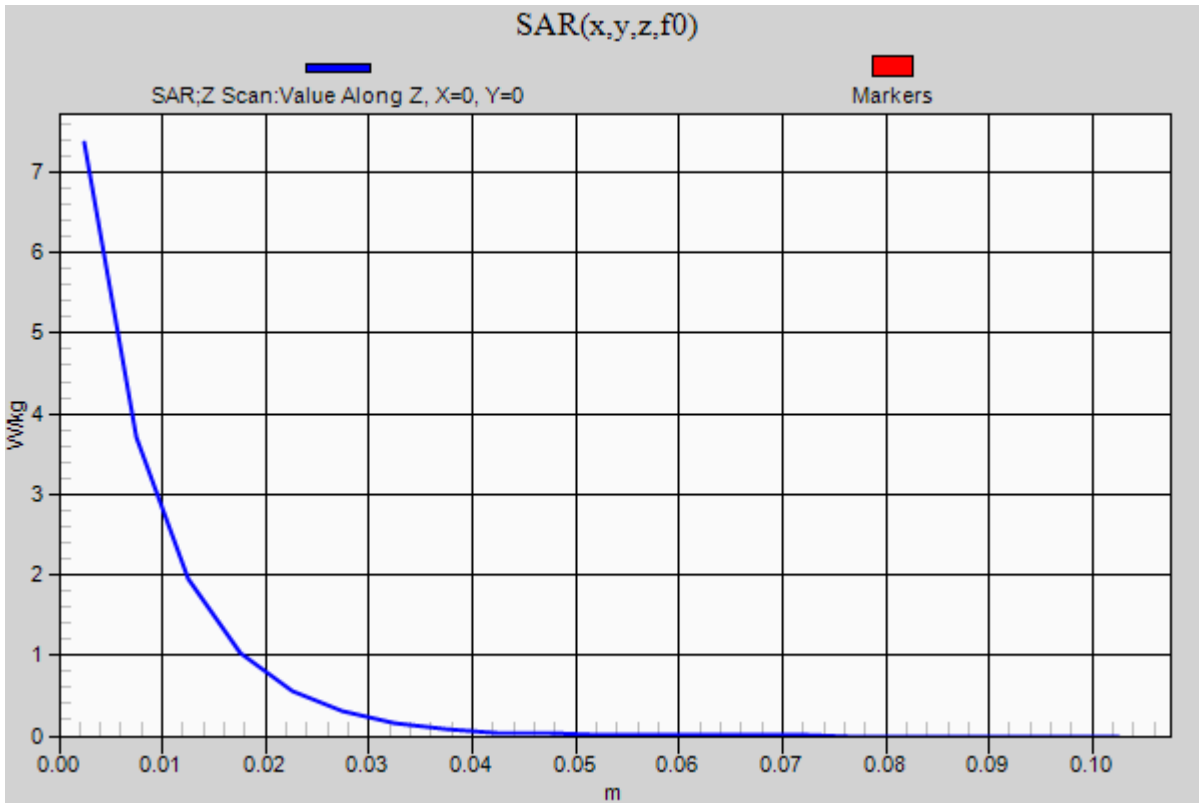


0 dB = 7.50 W/kg = 8.75 dBW/kg

### SAR-D\_SystemPerformanceCheck-D2450V2 SN 899

Frequency: 2450 MHz; Duty Cycle: 1:1

**Body/Pin=100 mW/Z Scan (1x1x21):** Measurement grid: dx=20mm, dy=20mm, dz=5mm  
Maximum value of SAR (measured) = 7.36 W/kg



## 20131023\_SystemPerformanceCheck-D5GHzV2 SN 1003

Frequency: 5600 MHz; Duty Cycle: 1:1; Room Ambient Temperature: 24.0°C; Liquid Temperature: 23.0°C  
 Medium parameters used:  $f = 5600$  MHz;  $\sigma = 5.967$  S/m;  $\epsilon_r = 49.009$ ;  $\rho = 1000$  kg/m<sup>3</sup>

DASY5 Configuration:

- Area Scan Setting: Find Secondary Maximum Within: 2.0 dB and with a peak SAR value greater than 0.0012W/kg
- Averaged Fast SAR: Polynomial fit
- Electronics: DAE4 Sn1360; Calibrated: 2/7/2013
- Probe: EX3DV4 - SN3686; ConvF(3.82, 3.82, 3.82); Calibrated: 3/11/2013;
- Sensor-Surface: 1.4mm (Mechanical Surface Detection)
- Phantom: ELI B v5.0; Type: QDOVA001BB; Serial: 1121

### Body/5.6 GHz, Pin=100mW/Area Scan (61x61x1): Interpolated grid: dx=1.000 mm, dy=1.000 mm

Reference Value = 41.459 V/m; Power Drift = 0.07 dB

**Fast SAR: SAR(1 g) = 7.07 W/kg; SAR(10 g) = 1.92 W/kg**

Maximum value of SAR (interpolated) = 19.0 W/kg

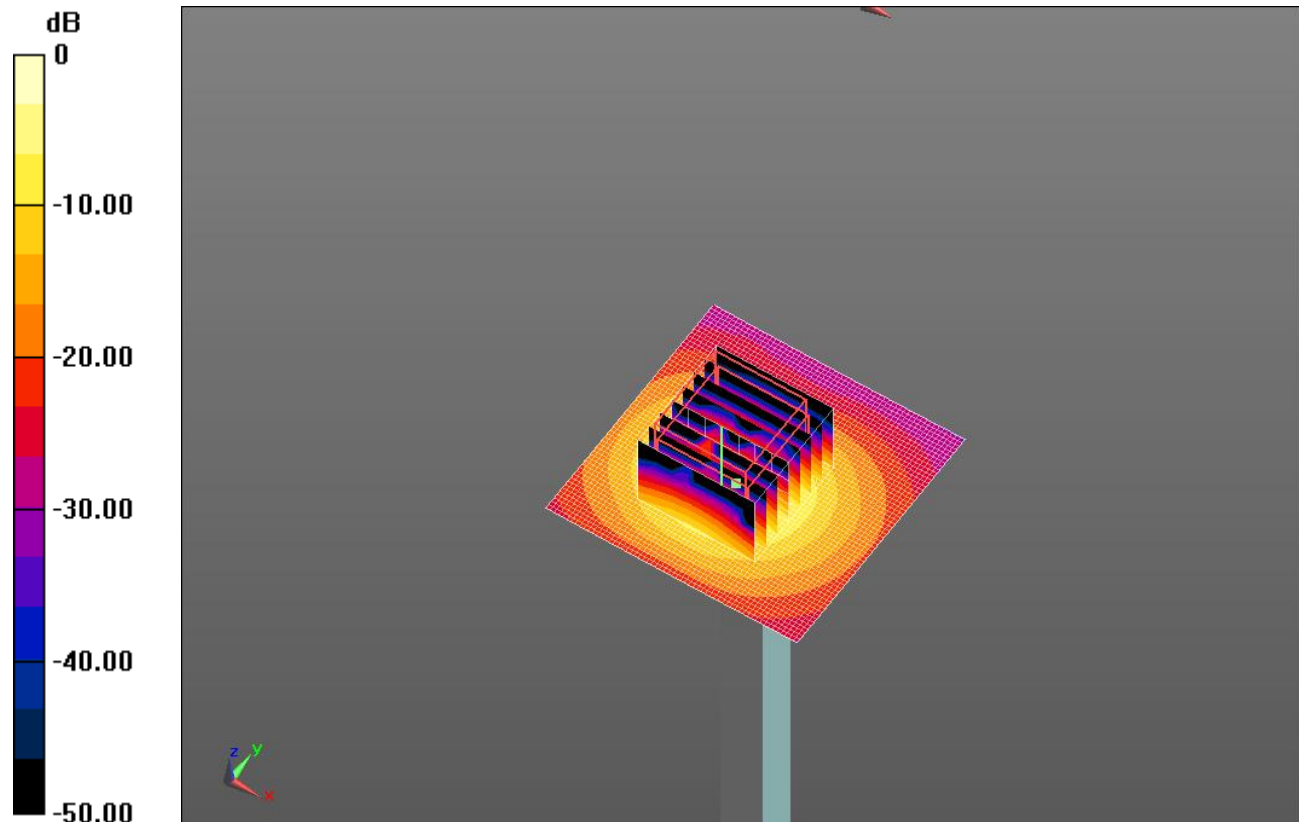
### Body/5.6 GHz, Pin=100mW/Zoom Scan (8x8x7)/Cube 0: Measurement grid: dx=4mm, dy=4mm, dz=1.4mm

Reference Value = 41.459 V/m; Power Drift = 0.07 dB

Peak SAR (extrapolated) = 36.3 W/kg

**SAR(1 g) = 7.25 W/kg; SAR(10 g) = 1.99 W/kg**

Maximum value of SAR (measured) = 18.3 W/kg

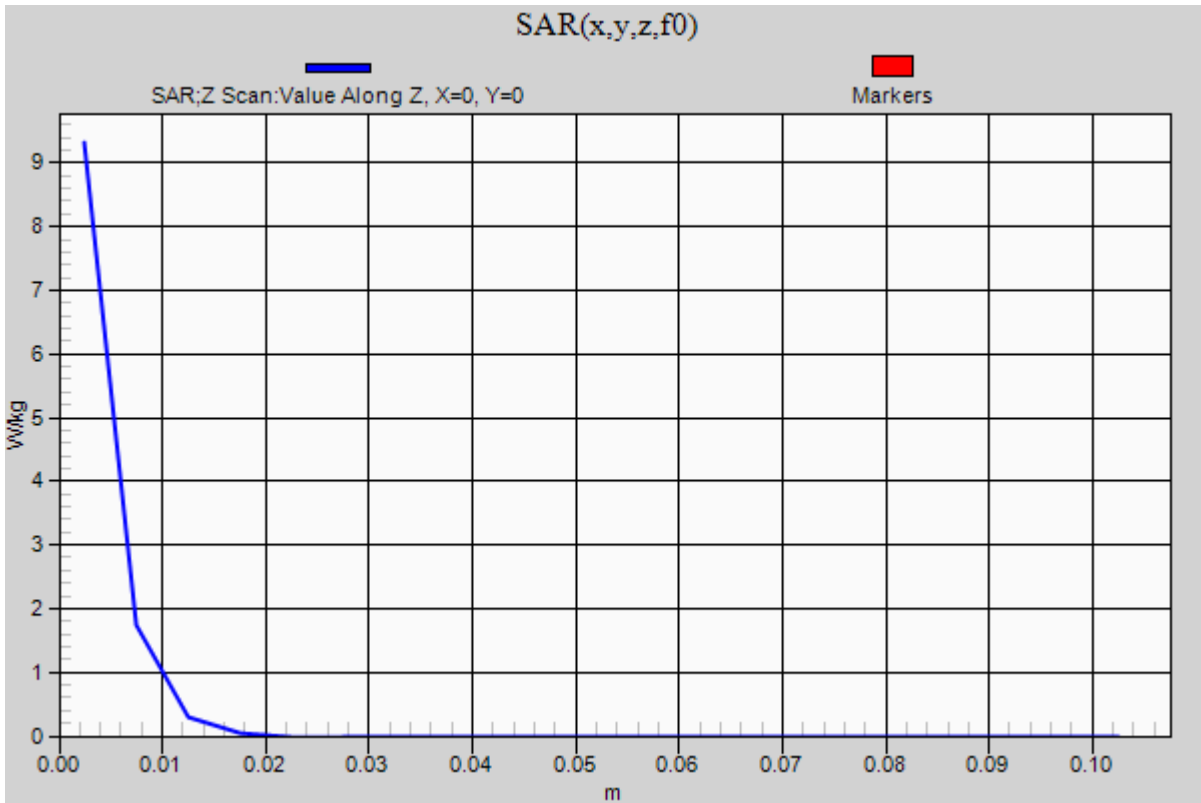


0 dB = 18.3 W/kg = 12.62 dBW/kg

### 20131023\_SystemPerformanceCheck-D5GHzV2 SN 1003

Frequency: 5600 MHz; Duty Cycle: 1:1

**Body/5.6 GHz, Pin=100mW/Z Scan (1x1x21):** Measurement grid: dx=20mm, dy=20mm, dz=5mm  
Maximum value of SAR (measured) = 9.32 W/kg



## 20131024\_SystemPerformanceCheck-D835V2 SN 4d142

Frequency: 835 MHz; Duty Cycle: 1:1; Room Ambient Temperature: 24.0°C; Liquid Temperature: 23.0°C  
 Medium parameters used:  $f = 835 \text{ MHz}$ ;  $\sigma = 0.998 \text{ S/m}$ ;  $\epsilon_r = 54.292$ ;  $\rho = 1000 \text{ kg/m}^3$

DASY5 Configuration:

- Area Scan Setting: Find Secondary Maximum Within: 2.0 dB and with a peak SAR value greater than 0.0012W/kg
- Averaged Fast SAR: Polynomial fit
- Electronics: DAE4 Sn1360; Calibrated: 2/7/2013
- Probe: EX3DV4 - SN3686; ConvF(9.04, 9.04, 9.04); Calibrated: 3/11/2013;
- Sensor-Surface: 2.5mm (Mechanical Surface Detection)
- Phantom: ELI B v5.0; Type: QDOVA001BB; Serial: 1121

**Body/Pin=100 mW/Area Scan (61x61x1):** Interpolated grid: dx=1.500 mm, dy=1.500 mm

Reference Value = 34.459 V/m; Power Drift = 0.02 dB

**Fast SAR: SAR(1 g) = 1.02 W/kg; SAR(10 g) = 0.683 W/kg**

Maximum value of SAR (interpolated) = 1.21 W/kg

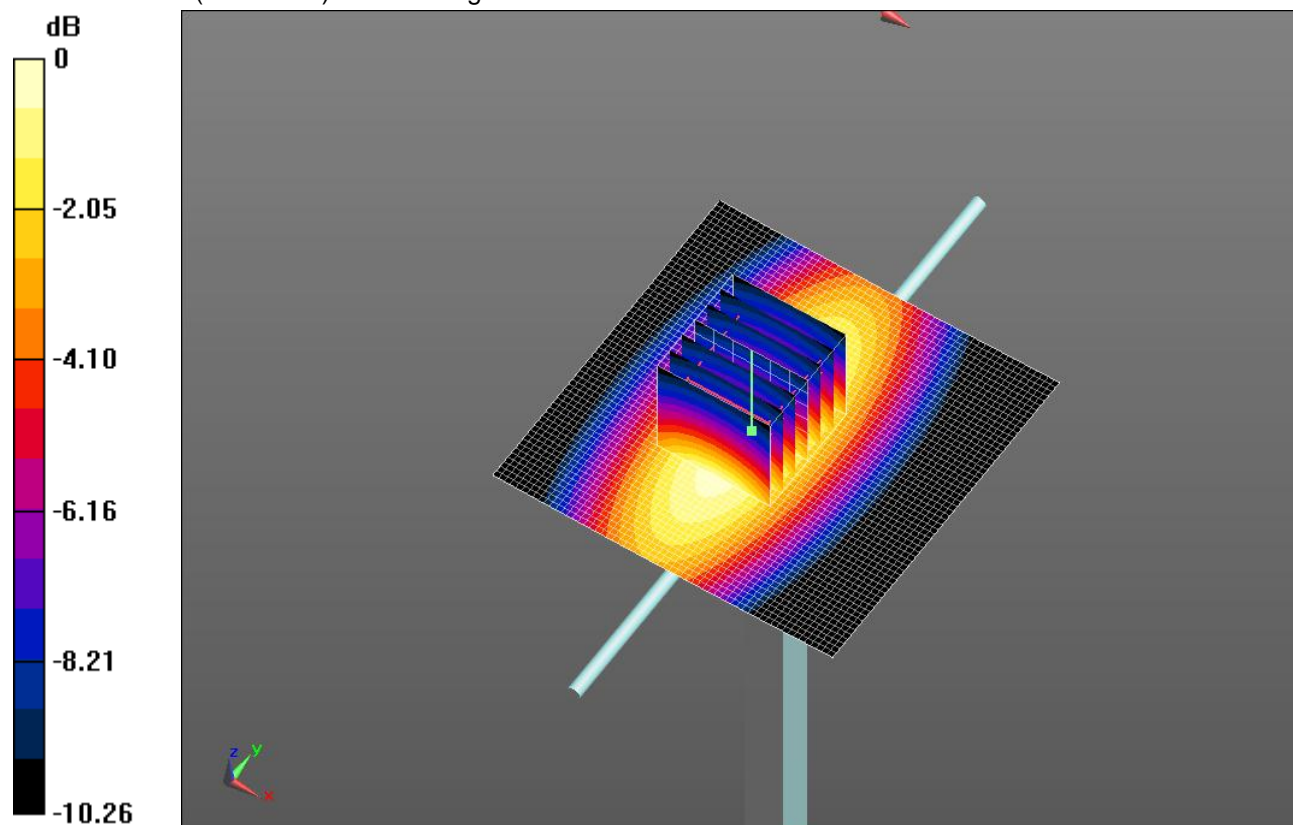
**Body/Pin=100 mW/Zoom Scan (7x7x7)/Cube 0:** Measurement grid: dx=5mm, dy=5mm, dz=5mm

Reference Value = 34.459 V/m; Power Drift = 0.02 dB

Peak SAR (extrapolated) = 1.49 W/kg

**SAR(1 g) = 1 W/kg; SAR(10 g) = 0.658 W/kg**

Maximum value of SAR (measured) = 1.22 W/kg

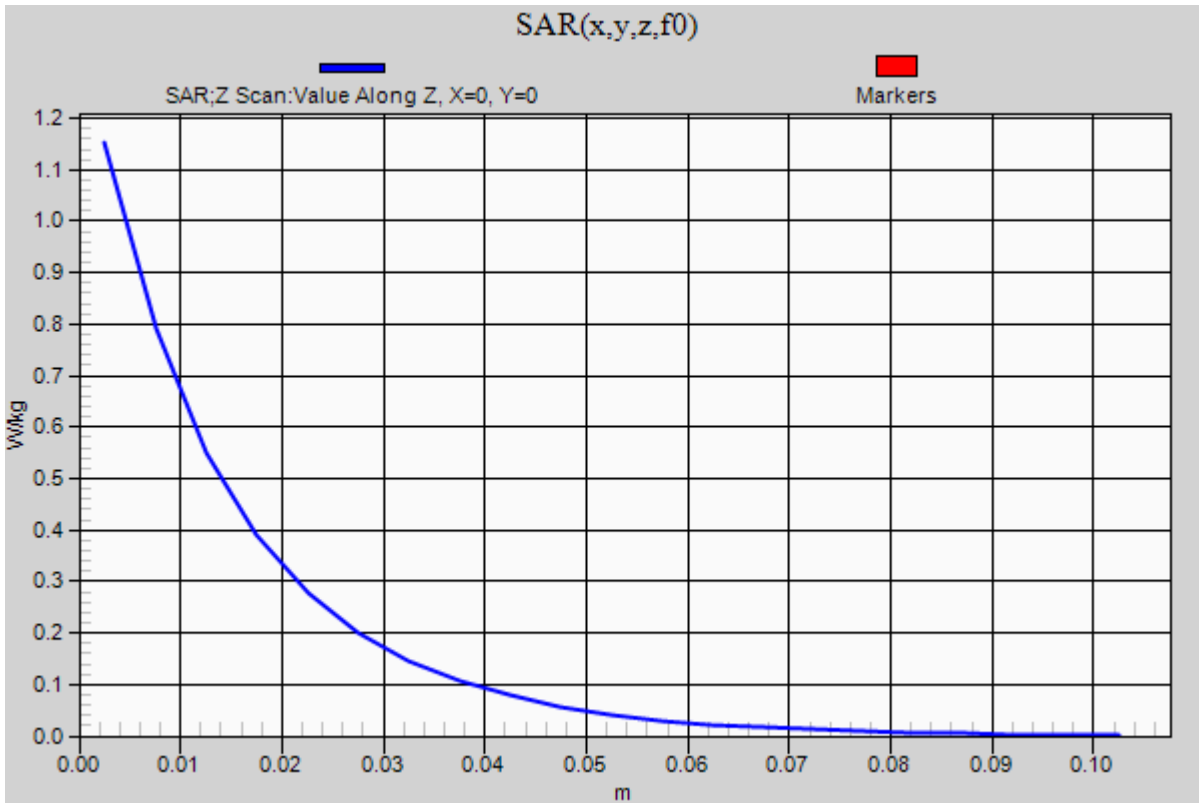


0 dB = 1.22 W/kg = 0.86 dBW/kg

### 20131024\_SystemPerformanceCheck-D835V2 SN 4d142

Frequency: 835 MHz; Duty Cycle: 1:1

**Body/Pin=100 mW/Z Scan (1x1x21):** Measurement grid: dx=20mm, dy=20mm, dz=5mm  
Maximum value of SAR (measured) = 1.15 W/kg



## GSM 850

Frequency: 836.6 MHz; Duty Cycle: 1:2; Room Ambient Temperature: 24.0°C; Liquid Temperature: 23.0°C  
 Medium parameters used (interpolated):  $f = 836.6 \text{ MHz}$ ;  $\sigma = 0.899 \text{ S/m}$ ;  $\epsilon_r = 40.159$ ;  $\rho = 1000 \text{ kg/m}^3$

DASY5 Configuration:

- Area Scan Setting: Find Secondary Maximum Within: 2.0 dB and with a peak SAR value greater than 0.0012W/kg
- Electronics: DAE4 Sn1360; Calibrated: 2/7/2013
- Probe: EX3DV4 - SN3686; ConvF(9.13, 9.13, 9.13); Calibrated: 3/11/2013;
- Sensor-Surface: 2.5mm (Mechanical Surface Detection (Locations From Previous Scan Used)), Sensor-Surface: 2.5mm (Mechanical Surface Detection)
- Phantom: SAM v5.0 ; Type: QD000P40CD; Serial: 1742

**LHS/Touch\_GPRS\_4 Slots\_Ch.190/Area Scan (8x12x1):** Measurement grid: dx=15mm, dy=15mm

[Info: Interpolated medium parameters used for SAR evaluation.](#)

Maximum value of SAR (measured) = 0.147 W/kg

**LHS/Touch\_GPRS\_4 Slots\_Ch.190/Zoom Scan (5x5x7)/Cube 0:** Measurement grid: dx=8mm, dy=8mm, dz=5mm

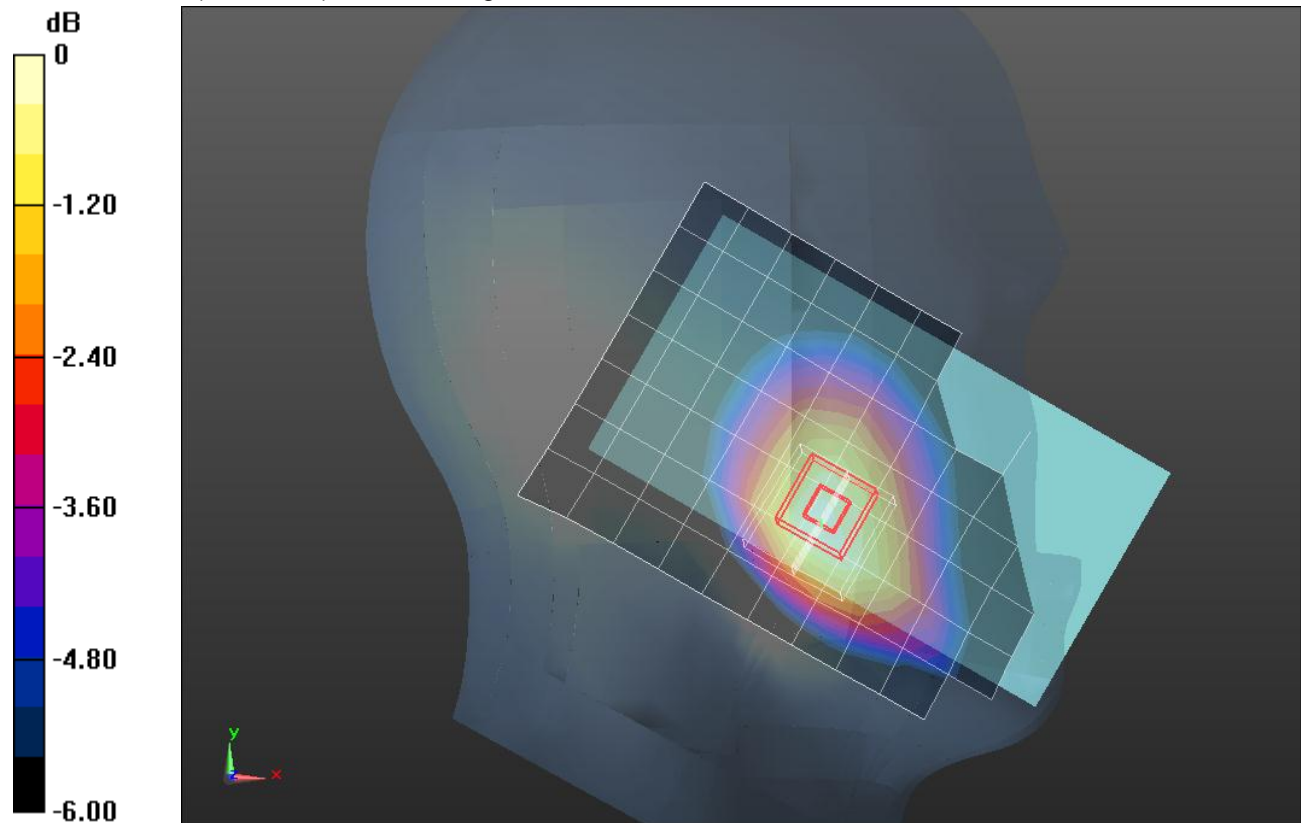
Reference Value = 13.091 V/m; Power Drift = -0.10 dB

Peak SAR (extrapolated) = 0.175 W/kg

**SAR(1 g) = 0.138 W/kg; SAR(10 g) = 0.106 W/kg**

[Info: Interpolated medium parameters used for SAR evaluation.](#)

Maximum value of SAR (measured) = 0.155 W/kg



0 dB = 0.155 W/kg = -8.10 dBW/kg

## GSM 850

Frequency: 836.6 MHz; Duty Cycle: 1:8; Room Ambient Temperature: 24.0°C; Liquid Temperature: 23.0°C  
 Medium parameters used (interpolated):  $f = 836.6$  MHz;  $\sigma = 1.011$  S/m;  $\epsilon_r = 53.034$ ;  $\rho = 1000$  kg/m<sup>3</sup>

DASY5 Configuration:

- Area Scan Setting: Find Secondary Maximum Within: 2.0 dB and with a peak SAR value greater than 0.0012W/kg
- Electronics: DAE4 Sn1360; Calibrated: 2/7/2013
- Probe: EX3DV4 - SN3686; ConvF(9.04, 9.04, 9.04); Calibrated: 3/11/2013;
- Sensor-Surface: 2.5mm (Mechanical Surface Detection)
- Phantom: ELI B v5.0; Type: QDOVA001BB; Serial: 1121

**Rear/Voice\_Ch.190/Area Scan (8x14x1):** Measurement grid: dx=15mm, dy=15mm

[Info: Interpolated medium parameters used for SAR evaluation.](#)

Maximum value of SAR (measured) = 0.148 W/kg

**Rear/Voice\_Ch.190/Zoom Scan (5x5x7)/Cube 0:** Measurement grid: dx=8mm, dy=8mm, dz=5mm

Reference Value = 12.182 V/m; Power Drift = 0.06 dB

Peak SAR (extrapolated) = 0.197 W/kg

**SAR(1 g) = 0.113 W/kg; SAR(10 g) = 0.065 W/kg**

[Info: Interpolated medium parameters used for SAR evaluation.](#)

Maximum value of SAR (measured) = 0.147 W/kg

**Rear/Voice\_Ch.190/Zoom Scan (5x5x7)/Cube 1:** Measurement grid: dx=8mm, dy=8mm, dz=5mm

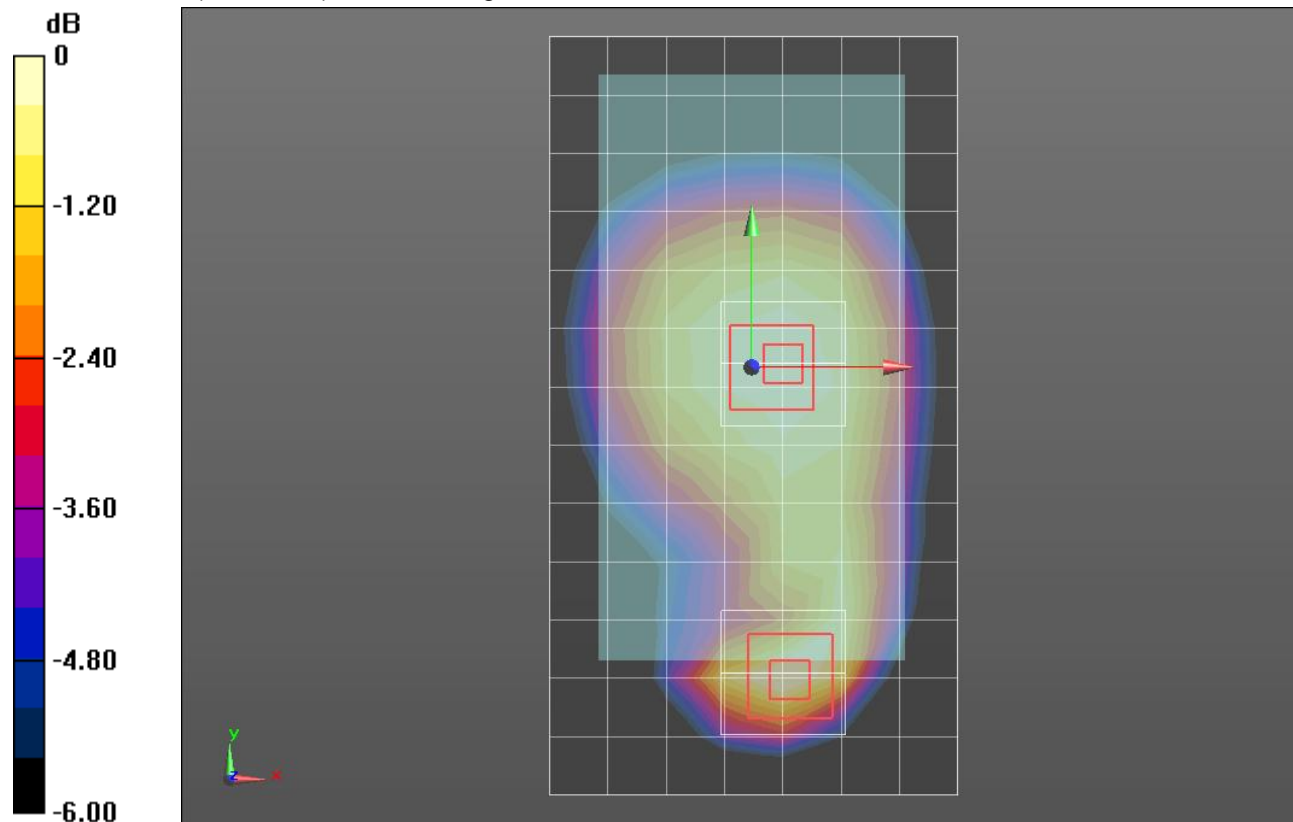
Reference Value = 12.182 V/m; Power Drift = 0.06 dB

Peak SAR (extrapolated) = 0.152 W/kg

**SAR(1 g) = 0.119 W/kg; SAR(10 g) = 0.091 W/kg**

[Info: Interpolated medium parameters used for SAR evaluation.](#)

Maximum value of SAR (measured) = 0.135 W/kg



0 dB = 0.135 W/kg = -8.70 dBW/kg

## GSM 850

Frequency: 836.6 MHz; Duty Cycle: 1:2; Room Ambient Temperature: 24.0°C; Liquid Temperature: 23.0°C  
 Medium parameters used (interpolated):  $f = 836.6 \text{ MHz}$ ;  $\sigma = 1.011 \text{ S/m}$ ;  $\epsilon_r = 53.034$ ;  $\rho = 1000 \text{ kg/m}^3$

DASY5 Configuration:

- Area Scan Setting: Find Secondary Maximum Within: 2.0 dB and with a peak SAR value greater than 0.0012W/kg
- Electronics: DAE4 Sn1360; Calibrated: 2/7/2013
- Probe: EX3DV4 - SN3686; ConvF(9.04, 9.04, 9.04); Calibrated: 3/11/2013;
- Sensor-Surface: 2.5mm (Mechanical Surface Detection (Locations From Previous Scan Used)), Sensor-Surface: 2.5mm (Mechanical Surface Detection)
- Phantom: ELI B v5.0; Type: QDOVA001BB; Serial: 1121

**Rear/GPRS\_4 Slots\_Ch.190/Area Scan (8x14x1):** Measurement grid: dx=15mm, dy=15mm  
 Maximum value of SAR (measured) = 0.419 W/kg

**Rear/GPRS\_4 Slots\_Ch.190/Zoom Scan (5x5x7)/Cube 0:** Measurement grid: dx=8mm, dy=8mm, dz=5mm

Reference Value = 21.409 V/m; Power Drift = -0.08 dB

Peak SAR (extrapolated) = 0.600 W/kg

**SAR(1 g) = 0.347 W/kg; SAR(10 g) = 0.200 W/kg**

Maximum value of SAR (measured) = 0.452 W/kg

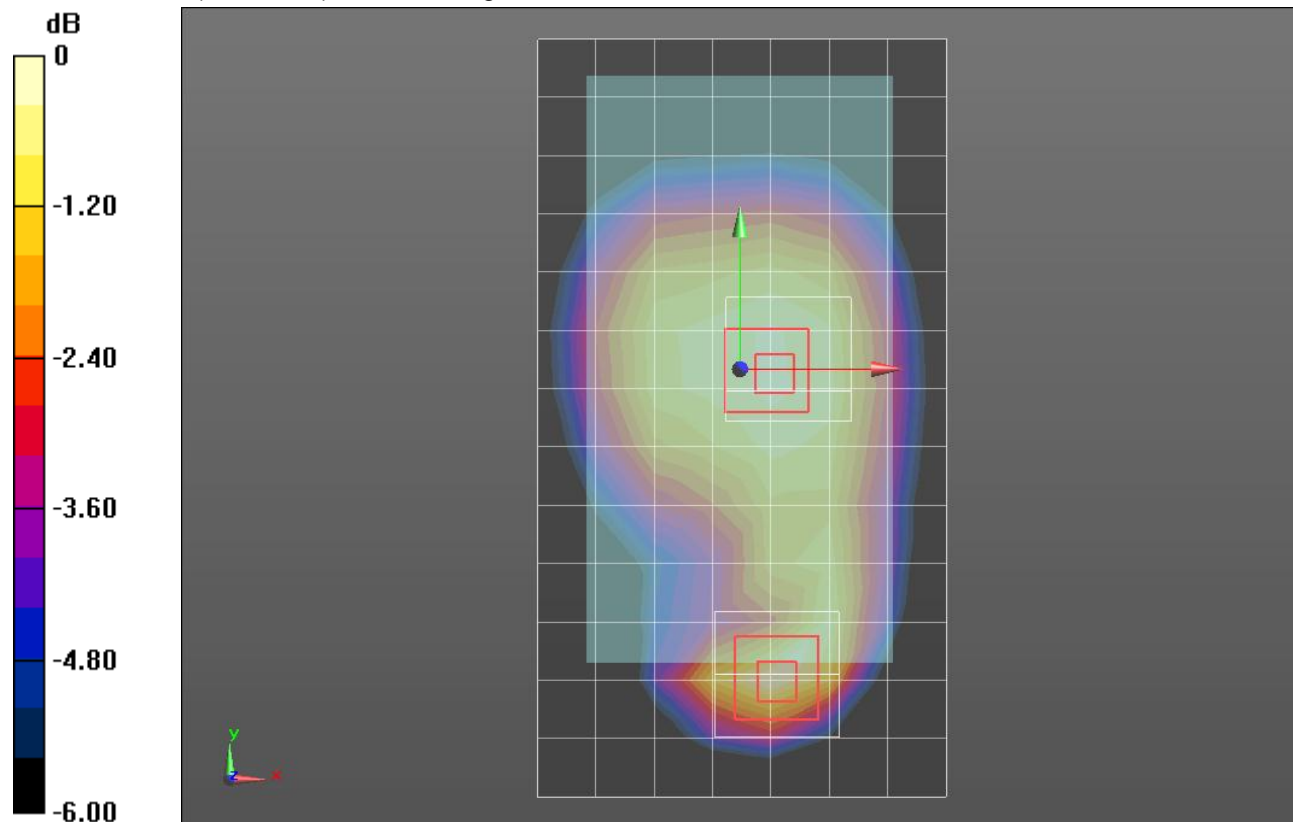
**Rear/GPRS\_4 Slots\_Ch.190/Zoom Scan (5x5x7)/Cube 1:** Measurement grid: dx=8mm, dy=8mm, dz=5mm

Reference Value = 21.409 V/m; Power Drift = -0.08 dB

Peak SAR (extrapolated) = 0.462 W/kg

**SAR(1 g) = 0.362 W/kg; SAR(10 g) = 0.276 W/kg**

Maximum value of SAR (measured) = 0.406 W/kg



0 dB = 0.406 W/kg = -3.91 dBW/kg

## GSM 1900

Frequency: 1880 MHz; Duty Cycle: 1:2.6; Room Ambient Temperature: 24.0°C; Liquid Temperature: 23.0°C  
 Medium parameters used:  $f = 1880 \text{ MHz}$ ;  $\sigma = 1.432 \text{ S/m}$ ;  $\epsilon_r = 40.205$ ;  $\rho = 1000 \text{ kg/m}^3$

DASY5 Configuration:

- Area Scan Setting: Find Secondary Maximum Within: 2.0 dB and with a peak SAR value greater than 0.0012W/kg
- Electronics: DAE4 Sn1239; Calibrated: 4/9/2013
- Probe: EX3DV4 - SN3749; ConvF(7.34, 7.34, 7.34); Calibrated: 1/15/2013;
- Sensor-Surface: 2.5mm (Mechanical Surface Detection)
- Phantom: SAM v5.0 (A); Type: QD000P40CD; Serial: 1602

**LHS/Touch\_EGPRS\_3 Slots\_Ch.661/Area Scan (8x12x1):** Measurement grid:  $dx=15\text{mm}$ ,  $dy=15\text{mm}$   
 Maximum value of SAR (measured) = 0.392 W/kg

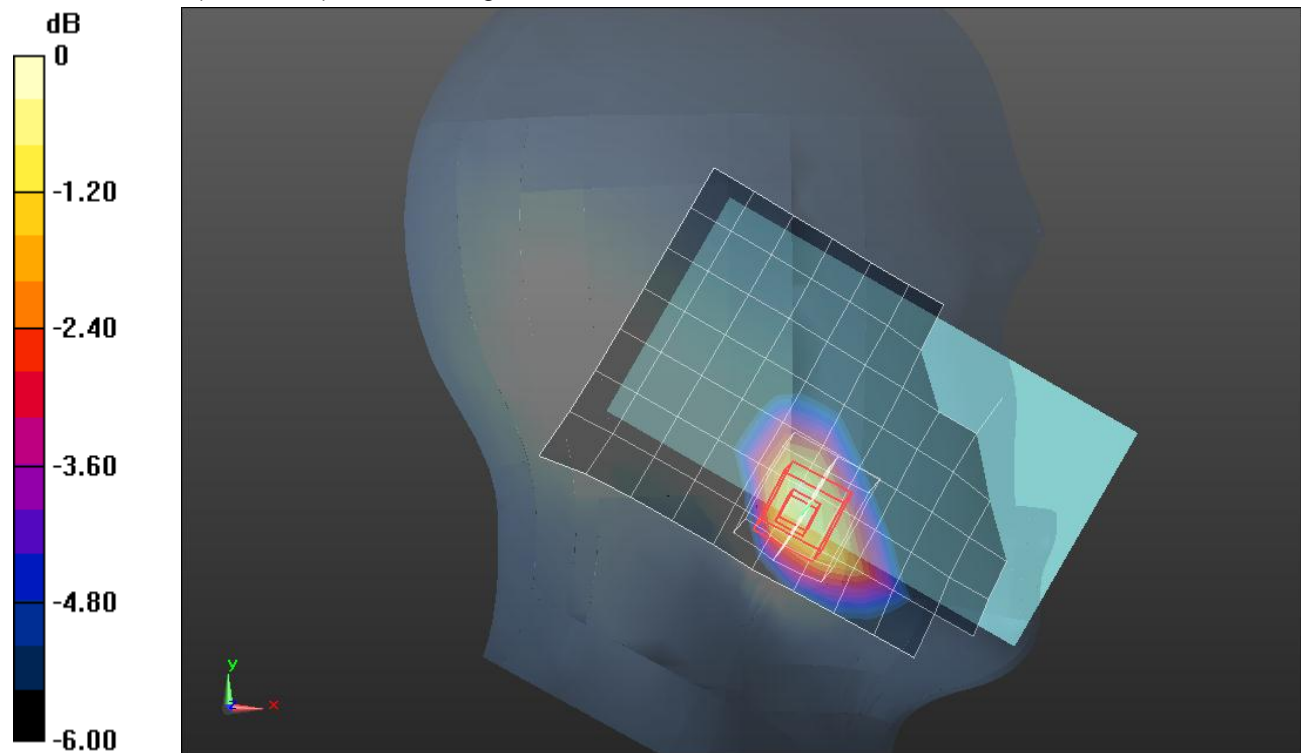
**LHS/Touch\_EGPRS\_3 Slots\_Ch.661/Zoom Scan (5x5x7)/Cube 0:** Measurement grid:  $dx=8\text{mm}$ ,  
 $dy=8\text{mm}$ ,  $dz=5\text{mm}$

Reference Value = 15.780 V/m; Power Drift = 0.09 dB

Peak SAR (extrapolated) = 0.543 W/kg

**SAR(1 g) = 0.356 W/kg; SAR(10 g) = 0.217 W/kg**

Maximum value of SAR (measured) = 0.442 W/kg



0 dB = 0.442 W/kg = -3.55 dBW/kg

## GSM 1900

Frequency: 1880 MHz; Duty Cycle: 1:8; Room Ambient Temperature: 24.0°C; Liquid Temperature: 23.0°C

Medium parameters used:  $f = 1880$  MHz;  $\sigma = 1.538$  S/m;  $\epsilon_r = 51.893$ ;  $\rho = 1000$  kg/m<sup>3</sup>

DASY5 Configuration:

- Area Scan Setting: Find Secondary Maximum Within: 2.0 dB and with a peak SAR value greater than 0.0012W/kg
- Electronics: DAE4 Sn1239; Calibrated: 4/9/2013
- Probe: EX3DV4 - SN3749; ConvF(6.99, 6.99, 6.99); Calibrated: 1/15/2013;
- Sensor-Surface: 2.5mm (Mechanical Surface Detection)
- Phantom: ELI v5.0 (B); Type: QDOVA001BB; Serial: 1099

**Front/Voice\_Ch.661/Area Scan (8x13x1):** Measurement grid: dx=15mm, dy=15mm

Maximum value of SAR (measured) = 0.450 W/kg

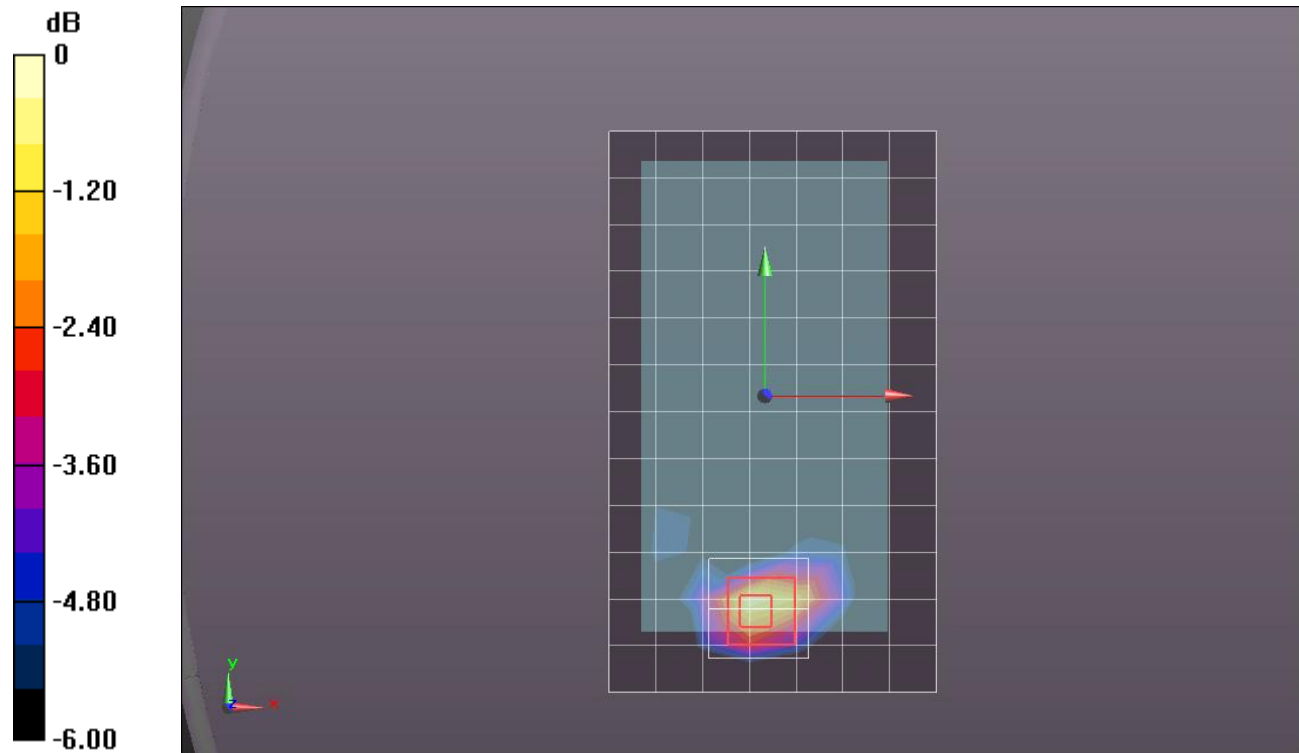
**Front/Voice\_Ch.661/Zoom Scan (5x5x7)/Cube 0:** Measurement grid: dx=8mm, dy=8mm, dz=5mm

Reference Value = 17.251 V/m; Power Drift = -0.16 dB

Peak SAR (extrapolated) = 0.657 W/kg

**SAR(1 g) = 0.373 W/kg; SAR(10 g) = 0.196 W/kg**

Maximum value of SAR (measured) = 0.492 W/kg



0 dB = 0.492 W/kg = -3.08 dBW/kg

## GSM 1900

Frequency: 1880 MHz; Duty Cycle: 1:2.6; Room Ambient Temperature: 24.0°C; Liquid Temperature: 23.0°C  
 Medium parameters used:  $f = 1880 \text{ MHz}$ ;  $\sigma = 1.538 \text{ S/m}$ ;  $\epsilon_r = 51.893$ ;  $\rho = 1000 \text{ kg/m}^3$

DASY5 Configuration:

- Area Scan Setting: Find Secondary Maximum Within: 2.0 dB and with a peak SAR value greater than 0.0012W/kg
- Electronics: DAE4 Sn1239; Calibrated: 4/9/2013
- Probe: EX3DV4 - SN3749; ConvF(6.99, 6.99, 6.99); Calibrated: 1/15/2013;
- Sensor-Surface: 2.5mm (Mechanical Surface Detection (Locations From Previous Scan Used)), Sensor-Surface: 2.5mm (Mechanical Surface Detection)
- Phantom: ELI v5.0 (B); Type: QDOVA001BB; Serial: 1099

**Front/EGPRS\_3 Slots\_Ch.661/Area Scan (8x13x1):** Measurement grid: dx=15mm, dy=15mm  
 Maximum value of SAR (measured) = 1.13 W/kg

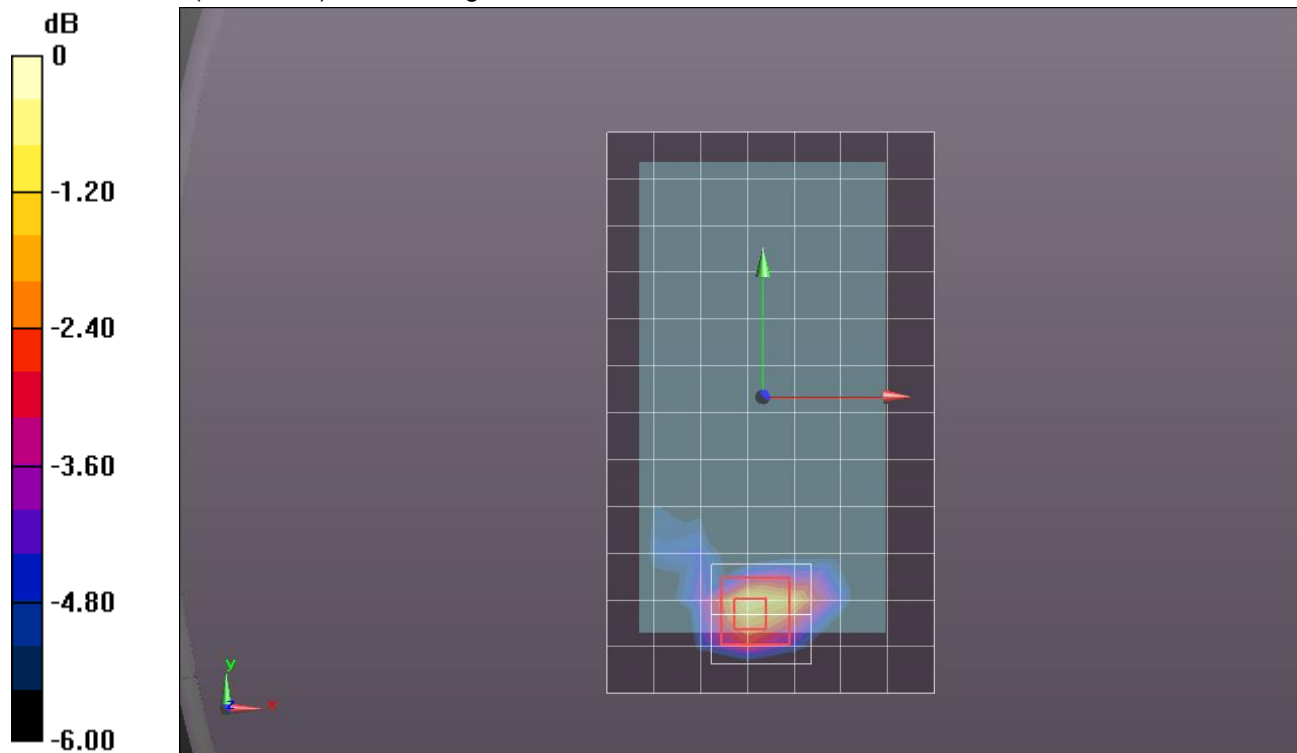
**Front/EGPRS\_3 Slots\_Ch.661/Zoom Scan (5x5x7)/Cube 0:** Measurement grid: dx=8mm, dy=8mm, dz=5mm

Reference Value = 28.588 V/m; Power Drift = -0.19 dB

Peak SAR (extrapolated) = 1.77 W/kg

**SAR(1 g) = 0.978 W/kg; SAR(10 g) = 0.502 W/kg**

Maximum value of SAR (measured) = 1.30 W/kg



0 dB = 1.30 W/kg = 1.14 dBW/kg

## W-CDMA Band V

Frequency: 836.6 MHz; Duty Cycle: 1:1; Room Ambient Temperature: 24.0°C; Liquid Temperature: 23.0°C  
 Medium parameters used (interpolated):  $f = 836.6$  MHz;  $\sigma = 0.894$  S/m;  $\epsilon_r = 41.405$ ;  $\rho = 1000$  kg/m<sup>3</sup>

DASY5 Configuration:

- Area Scan Setting: Find Secondary Maximum Within: 2.0 dB and with a peak SAR value greater than 0.0012W/kg
- Electronics: DAE4 Sn1360; Calibrated: 2/7/2013
- Probe: EX3DV4 - SN3686; ConvF(9.13, 9.13, 9.13); Calibrated: 3/11/2013;
- Sensor-Surface: 2.5mm (Mechanical Surface Detection)
- Phantom: SAM v5.0 ; Type: QD000P40CD; Serial: 1742

**RHS/Touch\_Rel.99\_RMC\_Ch.4183/Area Scan (7x13x1):** Measurement grid: dx=15mm, dy=15mm

[Info: Interpolated medium parameters used for SAR evaluation.](#)

Maximum value of SAR (measured) = 0.212 W/kg

**RHS/Touch\_Rel.99\_RMC\_Ch.4183/Zoom Scan (5x5x7)/Cube 0:** Measurement grid: dx=8mm, dy=8mm, dz=5mm

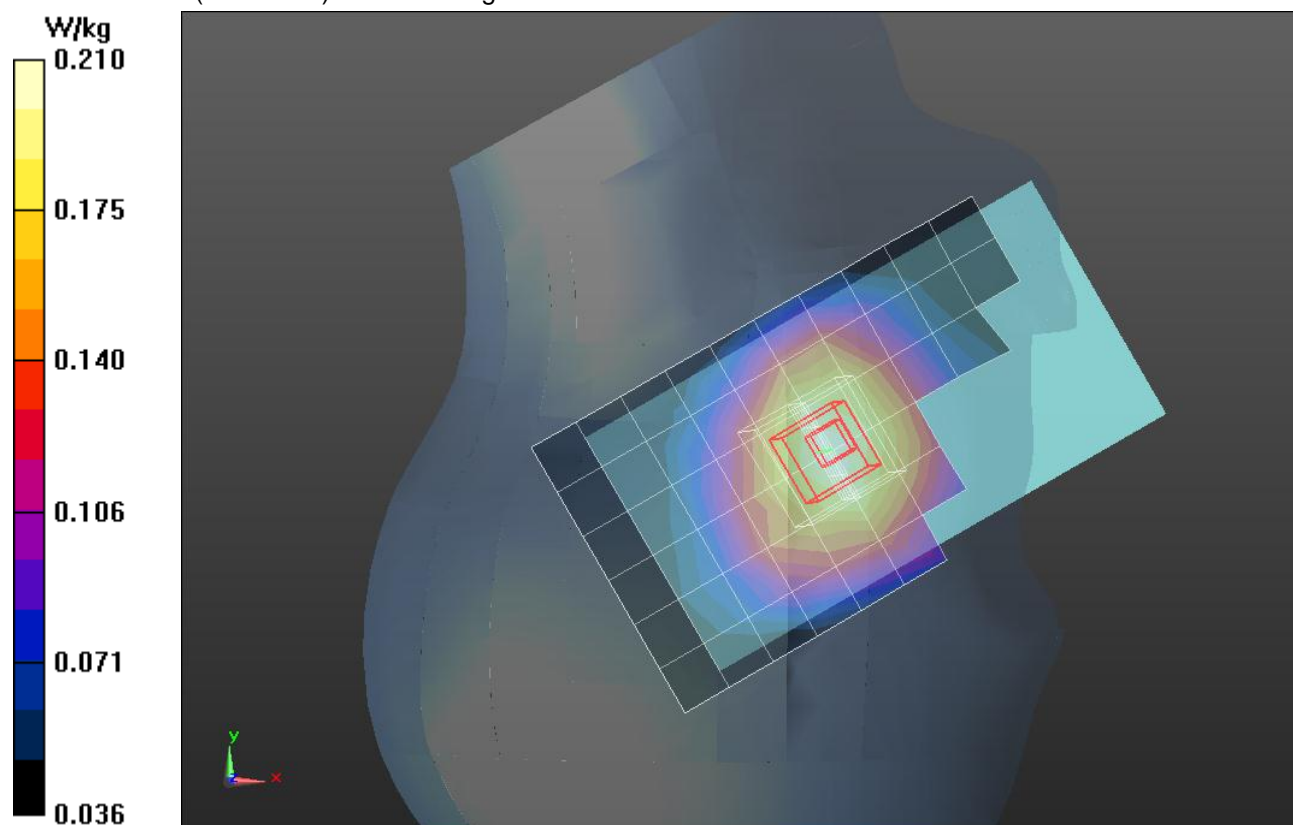
Reference Value = 15.445 V/m; Power Drift = 0.05 dB

Peak SAR (extrapolated) = 0.228 W/kg

**SAR(1 g) = 0.191 W/kg; SAR(10 g) = 0.152 W/kg**

[Info: Interpolated medium parameters used for SAR evaluation.](#)

Maximum value of SAR (measured) = 0.210 W/kg



## W-CDMA Band V

Frequency: 836.6 MHz; Duty Cycle: 1:1; Room Ambient Temperature: 24.0°C; Liquid Temperature: 23.0°C  
 Medium parameters used (interpolated):  $f = 836.6$  MHz;  $\sigma = 1$  S/m;  $\epsilon_r = 54.264$ ;  $\rho = 1000$  kg/m<sup>3</sup>

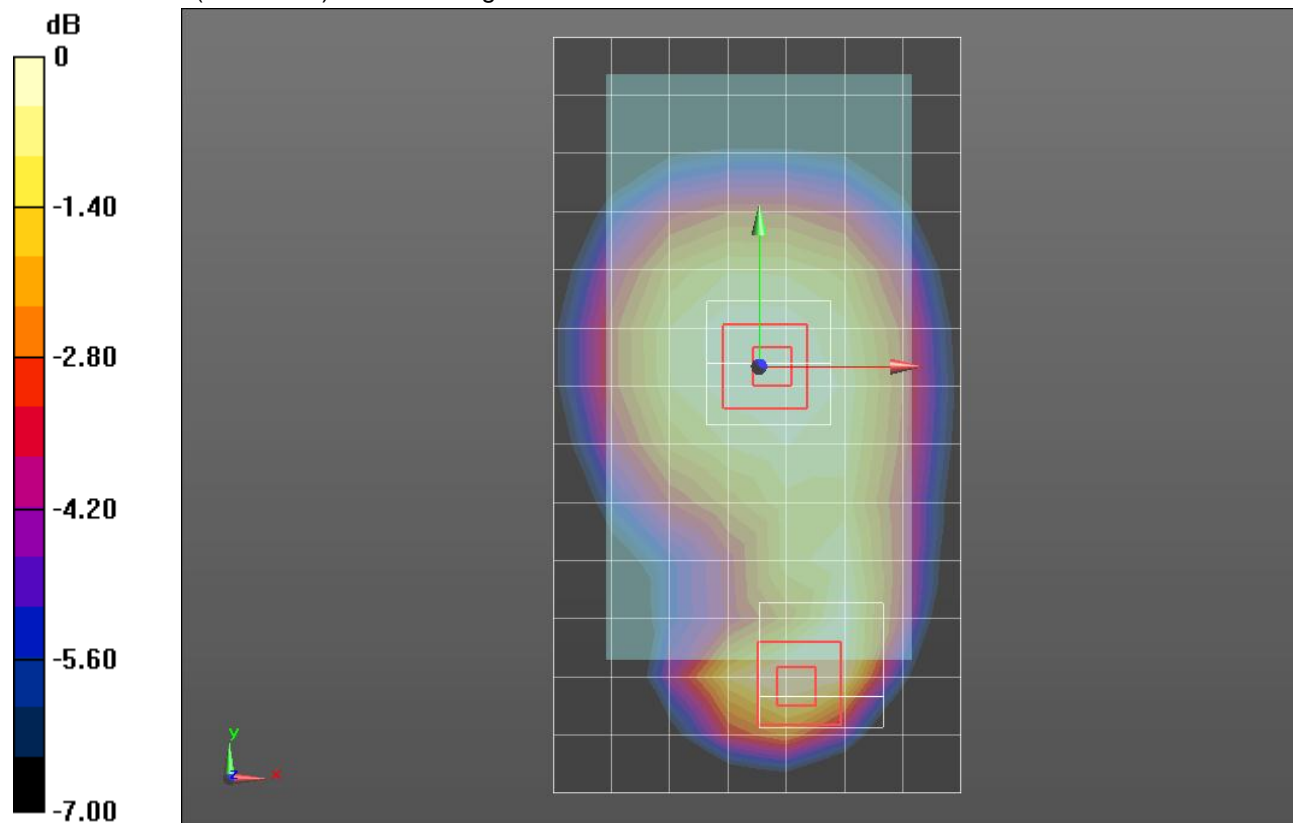
DASY5 Configuration:

- Area Scan Setting: Find Secondary Maximum Within: 2.0 dB and with a peak SAR value greater than 0.0012W/kg
- Electronics: DAE4 Sn1360; Calibrated: 2/7/2013
- Probe: EX3DV4 - SN3686; ConvF(9.04, 9.04, 9.04); Calibrated: 3/11/2013;
- Sensor-Surface: 2.5mm (Mechanical Surface Detection)
- Phantom: ELI B v5.0; Type: QDOVA001BB; Serial: 1121

**Rear/Rel.99\_RMC\_Ch.4183/Area Scan (8x14x1):** Measurement grid: dx=15mm, dy=15mm  
 Maximum value of SAR (measured) = 0.203 W/kg

**Rear/Rel.99\_RMC\_Ch.4183/Zoom Scan (5x5x7)/Cube 0:** Measurement grid: dx=8mm, dy=8mm, dz=5mm  
 Reference Value = 14.375 V/m; Power Drift = -0.03 dB  
 Peak SAR (extrapolated) = 0.278 W/kg  
**SAR(1 g) = 0.158 W/kg; SAR(10 g) = 0.092 W/kg**  
 Maximum value of SAR (measured) = 0.202 W/kg

**Rear/Rel.99\_RMC\_Ch.4183/Zoom Scan (5x5x7)/Cube 1:** Measurement grid: dx=8mm, dy=8mm, dz=5mm  
 Reference Value = 14.375 V/m; Power Drift = -0.03 dB  
 Peak SAR (extrapolated) = 0.208 W/kg  
**SAR(1 g) = 0.164 W/kg; SAR(10 g) = 0.126 W/kg**  
 Maximum value of SAR (measured) = 0.184 W/kg



0 dB = 0.184 W/kg = -7.35 dBW/kg

## W-CDMA Band II

Frequency: 1907.6 MHz; Duty Cycle: 1:1; Room Ambient Temperature: 24.0°C; Liquid Temperature: 23.0°C  
 Medium parameters used (interpolated):  $f = 1907.6 \text{ MHz}$ ;  $\sigma = 1.455 \text{ S/m}$ ;  $\epsilon_r = 40.065$ ;  $\rho = 1000 \text{ kg/m}^3$

DASY5 Configuration:

- Area Scan Setting: Find Secondary Maximum Within: 2.0 dB and with a peak SAR value greater than 0.0012W/kg
- Electronics: DAE4 Sn1239; Calibrated: 4/9/2013
- Probe: EX3DV4 - SN3749; ConvF(7.34, 7.34, 7.34); Calibrated: 1/15/2013;
- Sensor-Surface: 2.5mm (Mechanical Surface Detection)
- Phantom: SAM v5.0 (A); Type: QD000P40CD; Serial: 1602

**RHS/Tilt\_Rel.99\_RMC\_Ch.9538/Area Scan (8x13x1):** Measurement grid: dx=15mm, dy=15mm

[Info: Interpolated medium parameters used for SAR evaluation.](#)

Maximum value of SAR (measured) = 0.913 W/kg

**RHS/Tilt\_Rel.99\_RMC\_Ch.9538/Zoom Scan (5x5x7)/Cube 0:** Measurement grid: dx=8mm, dy=8mm, dz=5mm

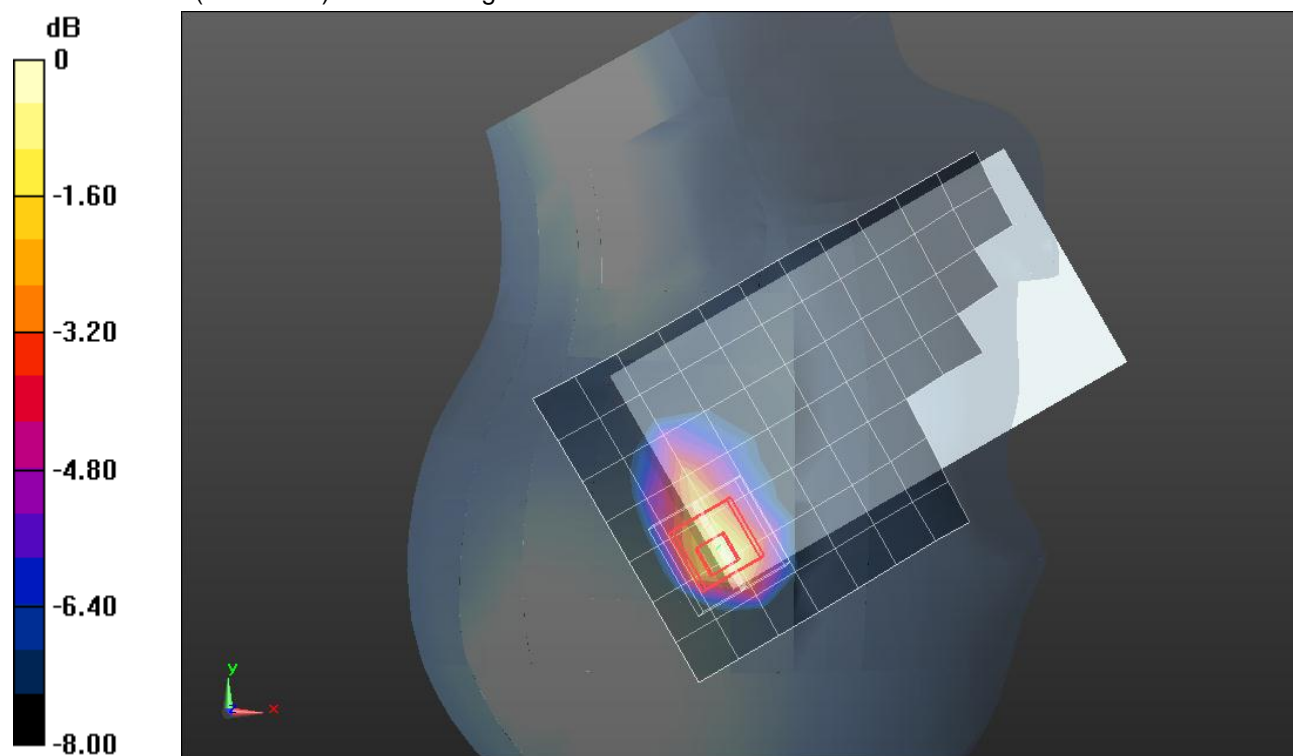
Reference Value = 26.705 V/m; Power Drift = 0.07 dB

Peak SAR (extrapolated) = 1.49 W/kg

**SAR(1 g) = 0.761 W/kg; SAR(10 g) = 0.387 W/kg**

[Info: Interpolated medium parameters used for SAR evaluation.](#)

Maximum value of SAR (measured) = 0.998 W/kg



0 dB = 0.998 W/kg = -0.01 dBW/kg

## W-CDMA Band II

Frequency: 1880 MHz; Duty Cycle: 1:1; Room Ambient Temperature: 24.0°C; Liquid Temperature: 23.0°C  
 Medium parameters used:  $f = 1880 \text{ MHz}$ ;  $\sigma = 1.538 \text{ S/m}$ ;  $\epsilon_r = 51.893$ ;  $\rho = 1000 \text{ kg/m}^3$

DASY5 Configuration:

- Area Scan Setting: Find Secondary Maximum Within: 2.0 dB and with a peak SAR value greater than 0.0012W/kg
- Electronics: DAE4 Sn1239; Calibrated: 4/9/2013
- Probe: EX3DV4 - SN3749; ConvF(6.99, 6.99, 6.99); Calibrated: 1/15/2013;
- Sensor-Surface: 2.5mm (Mechanical Surface Detection)
- Phantom: ELI v5.0 (B); Type: QDOVA001BB; Serial: 1099

**Rear/Rel.99\_RMC\_Ch.9400/Area Scan (9x13x1):** Measurement grid: dx=15mm, dy=15mm  
 Maximum value of SAR (measured) = 0.704 W/kg

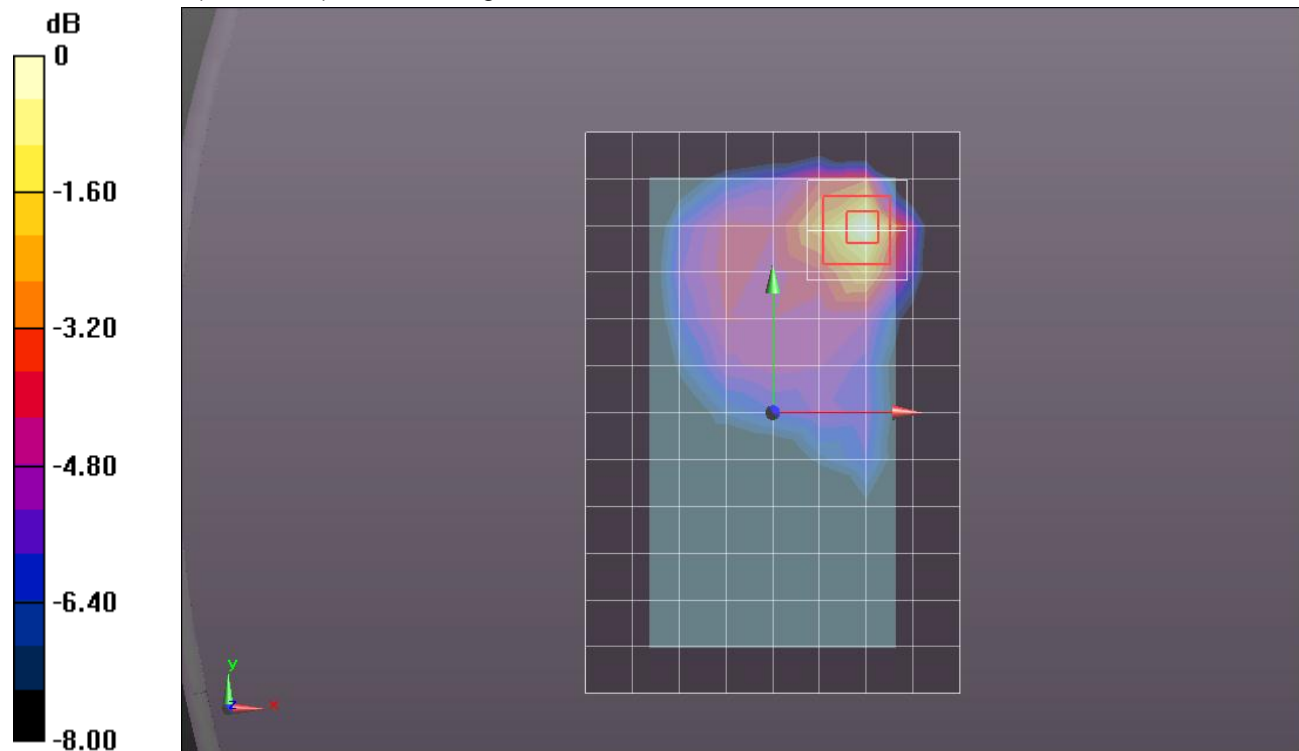
**Rear/Rel.99\_RMC\_Ch.9400/Zoom Scan (5x5x7)/Cube 0:** Measurement grid: dx=8mm, dy=8mm, dz=5mm

Reference Value = 21.662 V/m; Power Drift = -0.04 dB

Peak SAR (extrapolated) = 0.974 W/kg

**SAR(1 g) = 0.519 W/kg; SAR(10 g) = 0.272 W/kg**

Maximum value of SAR (measured) = 0.676 W/kg



0 dB = 0.676 W/kg = -1.70 dBW/kg

## WiFi 2.4GHz

Frequency: 2437 MHz; Duty Cycle: 1:1; Room Ambient Temperature: 24.0°C; Liquid Temperature: 23.0°C  
 Medium parameters used (interpolated):  $f = 2437 \text{ MHz}$ ;  $\sigma = 1.79 \text{ S/m}$ ;  $\epsilon_r = 37.957$ ;  $\rho = 1000 \text{ kg/m}^3$

DASY5 Configuration:

- Area Scan Setting: Find Secondary Maximum Within: 2.0 dB and with a peak SAR value greater than 0.0012W/kg
- Electronics: DAE4 Sn1360; Calibrated: 2/7/2013
- Probe: EX3DV4 - SN3686; ConvF(6.82, 6.82, 6.82); Calibrated: 3/11/2013;
- Sensor-Surface: 2.5mm (Mechanical Surface Detection)
- Phantom: SAM v5.0 ; Type: QD000P40CD; Serial: TP:xxxx

**LHS/Touch\_802.11b\_Ch. 6/Area Scan (10x15x1):** Measurement grid: dx=12mm, dy=12mm

[Info: Interpolated medium parameters used for SAR evaluation.](#)

Maximum value of SAR (measured) = 0.104 W/kg

**LHS/Touch\_802.11b\_Ch. 6/Zoom Scan (7x7x7)/Cube 0:** Measurement grid: dx=5mm, dy=5mm, dz=5mm

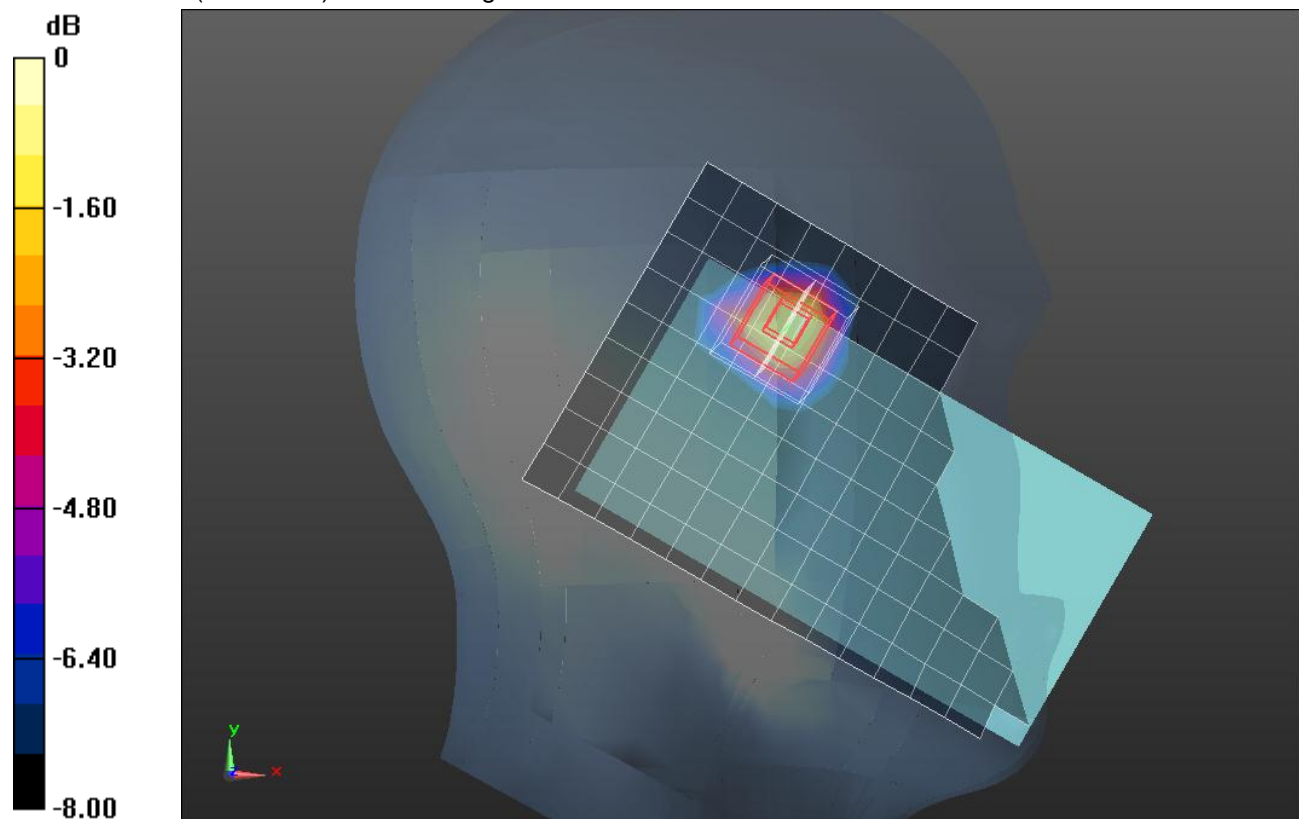
Reference Value = 1.937 V/m; Power Drift = -0.19 dB

Peak SAR (extrapolated) = 0.185 W/kg

**SAR(1 g) = 0.084 W/kg; SAR(10 g) = 0.038 W/kg**

[Info: Interpolated medium parameters used for SAR evaluation.](#)

Maximum value of SAR (measured) = 0.123 W/kg



0 dB = 0.123 W/kg = -9.10 dBW/kg

## Wi-Fi 2.4GHz

Frequency: 2437 MHz; Duty Cycle: 1:1; Room Ambient Temperature: 24.0°C; Liquid Temperature: 23.0°C  
Medium parameters used (interpolated):  $f = 2437$  MHz;  $\sigma = 1.883$  S/m;  $\epsilon_r = 52.934$ ;  $\rho = 1000$  kg/m<sup>3</sup>

DASY5 Configuration:

- Area Scan Setting: Find Secondary Maximum Within: 2.0 dB and with a peak SAR value greater than 0.0012W/kg
- Electronics: DAE4 Sn1360; Calibrated: 2/7/2013
- Probe: EX3DV4 - SN3686; ConvF(6.92, 6.92, 6.92); Calibrated: 3/11/2013;
- Sensor-Surface: 2.5mm (Mechanical Surface Detection)
- Phantom: ELI A v5.0; Type: QDOVA002AA; Serial: TP:xxxx

**Rear/802.11b\_ch 6/Area Scan (10x16x1):** Measurement grid: dx=12mm, dy=12mm

[Info: Interpolated medium parameters used for SAR evaluation.](#)

Maximum value of SAR (measured) = 0.200 W/kg

**Rear/802.11b\_ch 6/Zoom Scan (7x7x7)/Cube 0:** Measurement grid: dx=5mm, dy=5mm, dz=5mm

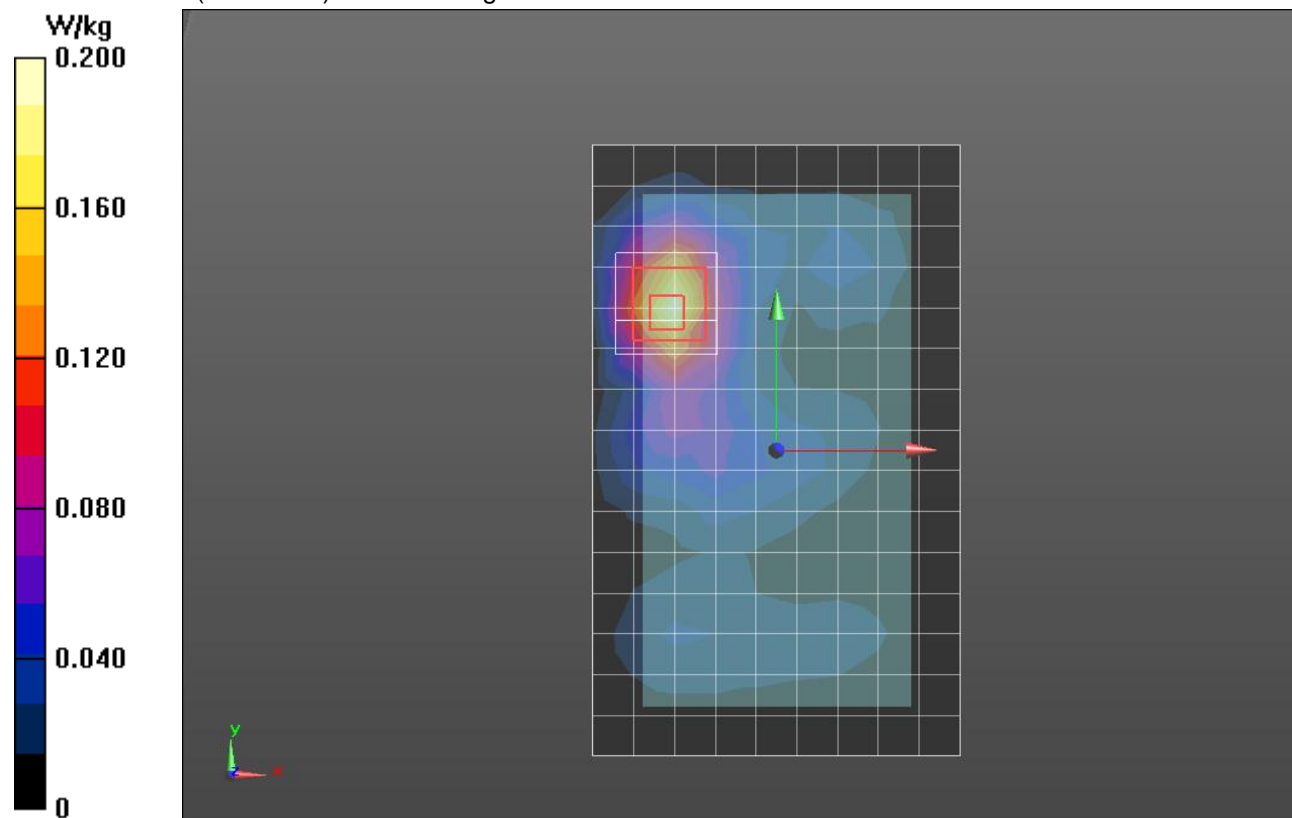
Reference Value = 10.293 V/m; Power Drift = 0.04 dB

Peak SAR (extrapolated) = 0.306 W/kg

**SAR(1 g) = 0.151 W/kg; SAR(10 g) = 0.075 W/kg**

[Info: Interpolated medium parameters used for SAR evaluation.](#)

Maximum value of SAR (measured) = 0.208 W/kg



## WiFi 5.8GHz

Frequency: 5745 MHz; Duty Cycle: 1:1; Room Ambient Temperature: 24.0°C; Liquid Temperature: 23.0°C  
Medium parameters used:  $f = 5745 \text{ MHz}$ ;  $\sigma = 5.059 \text{ S/m}$ ;  $\epsilon_r = 35.687$ ;  $\rho = 1000 \text{ kg/m}^3$

DASY5 Configuration:

- Area Scan Setting: Find Secondary Maximum Within: 2.0 dB and with a peak SAR value greater than 0.0012W/kg
- Electronics: DAE4 Sn1360; Calibrated: 2/7/2013
- Probe: EX3DV4 - SN3686; ConvF(4.06, 4.06, 4.06); Calibrated: 3/11/2013;
- Sensor-Surface: 2mm (Mechanical Surface Detection)
- Phantom: SAM v5.0 ; Type: QD000P40CD; Serial: TP:xxxx

**LHS/Touch\_802.11a\_Ch. 149/Area Scan (11x17x1):** Measurement grid: dx=10mm, dy=10mm

Maximum value of SAR (measured) = 0.0760 W/kg

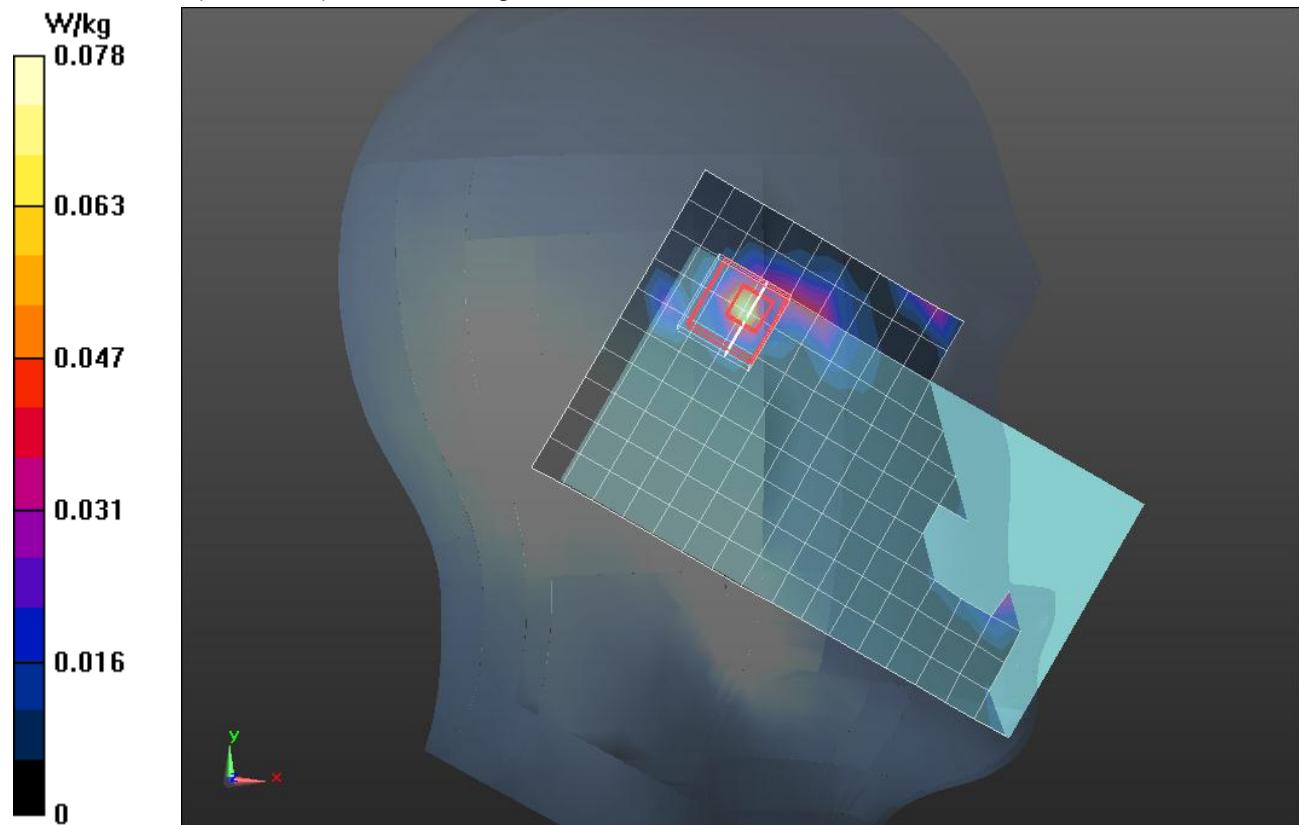
**LHS/Touch\_802.11a\_Ch. 149/Zoom Scan (7x7x12)/Cube 0:** Measurement grid: dx=4mm, dy=4mm, dz=2mm

Reference Value = 5.022 V/m; Power Drift = -0.16 dB

Peak SAR (extrapolated) = 0.301 W/kg

**SAR(1 g) = 0.034 W/kg; SAR(10 g) = 0.00943 W/kg**

Maximum value of SAR (measured) = 0.0782 W/kg



## Wi-Fi 5.8 GHz

Frequency: 5745 MHz; Duty Cycle: 1:1; Room Ambient Temperature: 24.0°C; Liquid Temperature: 23.0°C  
 Medium parameters used:  $f = 5745 \text{ MHz}$ ;  $\sigma = 6.184 \text{ S/m}$ ;  $\epsilon_r = 48.801$ ;  $\rho = 1000 \text{ kg/m}^3$

DASY5 Configuration:

- Area Scan Setting: Find Secondary Maximum Within: 2.0 dB and with a peak SAR value greater than 0.0012W/kg
- Electronics: DAE4 Sn1360; Calibrated: 2/7/2013
- Probe: EX3DV4 - SN3686; ConvF(3.75, 3.75, 3.75); Calibrated: 3/11/2013;
- Sensor-Surface: 2mm (Mechanical Surface Detection)
- Phantom: ELI B v5.0; Type: QDOVA001BB; Serial: TP:xxxx

**Rear/802.11a\_ch 149/Area Scan (13x17x1):** Measurement grid: dx=10mm, dy=10mm

Maximum value of SAR (measured) = 0.286 W/kg

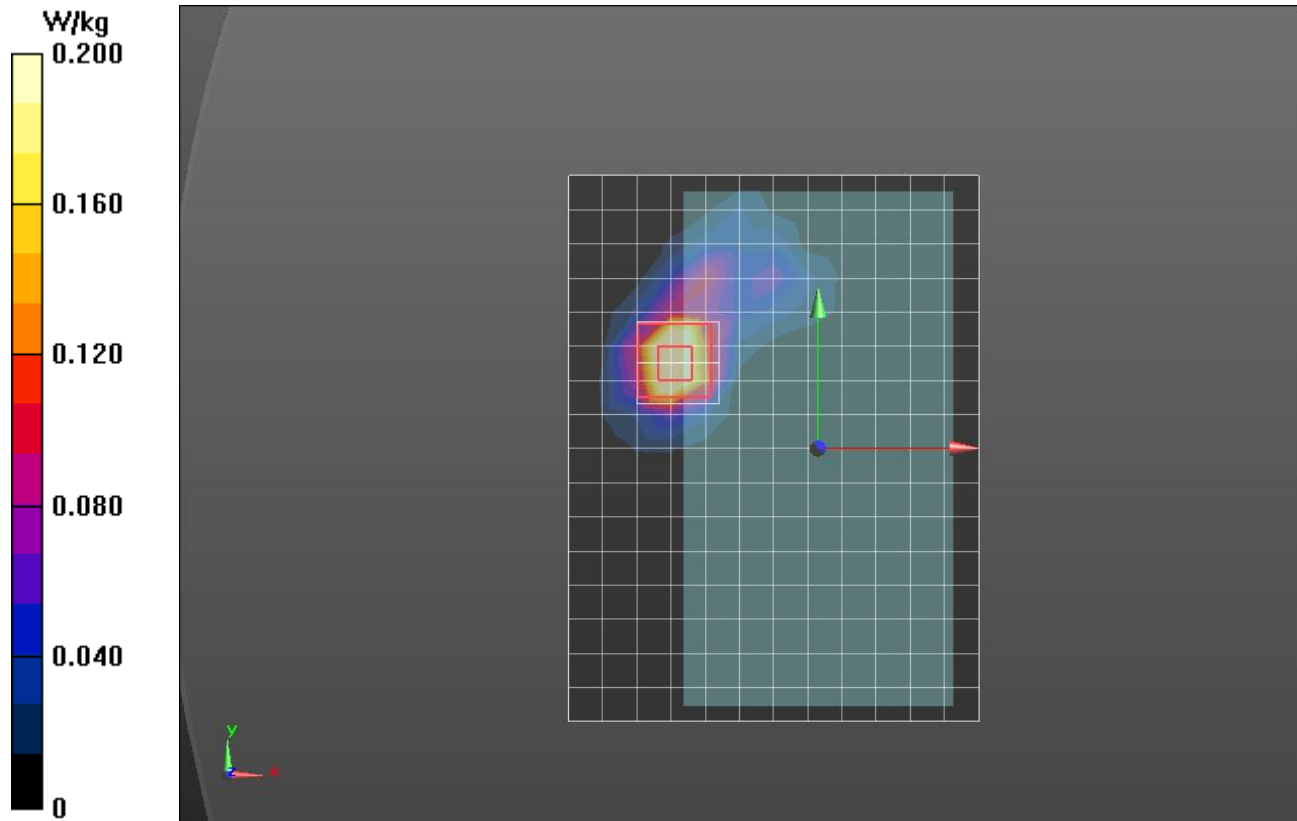
**Rear/802.11a\_ch 149/Zoom Scan (7x7x12)/Cube 0:** Measurement grid: dx=4mm, dy=4mm, dz=2mm

Reference Value = 7.575 V/m; Power Drift = -0.05 dB

Peak SAR (extrapolated) = 0.656 W/kg

**SAR(1 g) = 0.155 W/kg; SAR(10 g) = 0.044 W/kg**

Maximum value of SAR (measured) = 0.360 W/kg



## WiFi 5.2GHz

Frequency: 5180 MHz; Duty Cycle: 1:1; Room Ambient Temperature: 24.0°C; Liquid Temperature: 23.0°C  
 Medium parameters used:  $f = 5180 \text{ MHz}$ ;  $\sigma = 4.469 \text{ S/m}$ ;  $\epsilon_r = 36.336$ ;  $\rho = 1000 \text{ kg/m}^3$

DASY5 Configuration:

- Area Scan Setting: Find Secondary Maximum Within: 2.0 dB and with a peak SAR value greater than 0.0012W/kg
- Electronics: DAE4 Sn1360; Calibrated: 2/7/2013
- Probe: EX3DV4 - SN3686; ConvF(4.5, 4.5, 4.5); Calibrated: 3/11/2013;
- Sensor-Surface: 2mm (Mechanical Surface Detection)
- Phantom: SAM v5.0 ; Type: QD000P40CD; Serial: TP:xxxx

**LHS/Touch\_802.11a\_Ch. 36/Area Scan (11x17x1):** Measurement grid: dx=10mm, dy=10mm

Maximum value of SAR (measured) = 0.109 W/kg

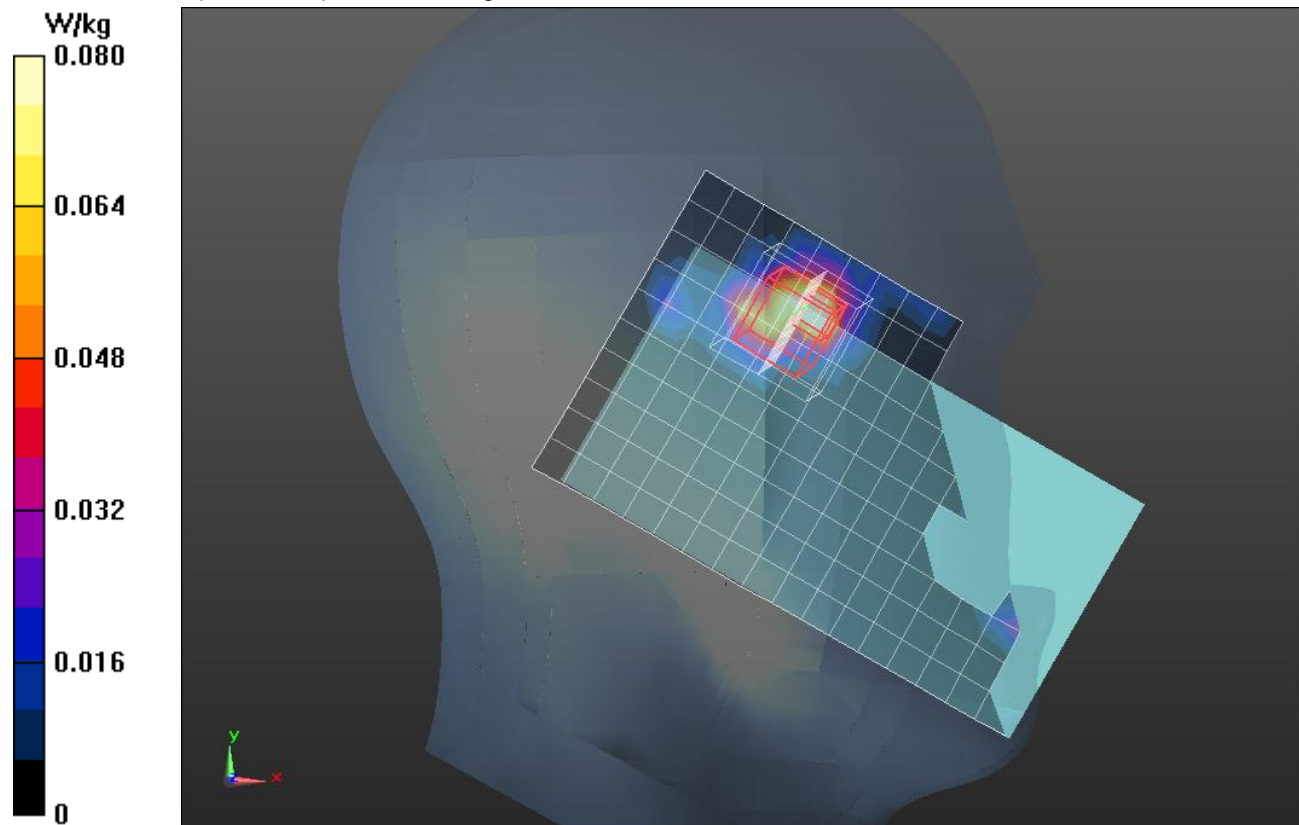
**LHS/Touch\_802.11a\_Ch. 36/Zoom Scan (9x9x12)/Cube 0:** Measurement grid: dx=4mm, dy=4mm, dz=2mm

Reference Value = 5.471 V/m; Power Drift = 0.17 dB

Peak SAR (extrapolated) = 0.794 W/kg

**SAR(1 g) = 0.061 W/kg; SAR(10 g) = 0.015 W/kg**

Maximum value of SAR (measured) = 0.113 W/kg



## Wi-Fi 5.5 GHz

Frequency: 5700 MHz; Duty Cycle: 1:1; Room Ambient Temperature: 24.0°C; Liquid Temperature: 23.0°C  
 Medium parameters used:  $f = 5700 \text{ MHz}$ ;  $\sigma = 6.119 \text{ S/m}$ ;  $\epsilon_r = 48.843$ ;  $\rho = 1000 \text{ kg/m}^3$

DASY5 Configuration:

- Area Scan Setting: Find Secondary Maximum Within: 2.0 dB and with a peak SAR value greater than 0.0012W/kg
- Electronics: DAE4 Sn1360; Calibrated: 2/7/2013
- Probe: EX3DV4 - SN3686; ConvF(3.75, 3.75, 3.75); Calibrated: 3/11/2013;
- Sensor-Surface: 2mm (Mechanical Surface Detection)
- Phantom: ELI B v5.0; Type: QDOVA001BB; Serial: TP:xxxx

**Rear/802.11a\_ch 140/Area Scan (13x17x1):** Measurement grid: dx=10mm, dy=10mm

Maximum value of SAR (measured) = 0.336 W/kg

**Rear/802.11a\_ch 140/Zoom Scan (7x7x12)/Cube 0:** Measurement grid: dx=4mm, dy=4mm, dz=2mm

Reference Value = 8.254 V/m; Power Drift = 0.01 dB

Peak SAR (extrapolated) = 0.695 W/kg

**SAR(1 g) = 0.172 W/kg; SAR(10 g) = 0.051 W/kg**

Maximum value of SAR (measured) = 0.381 W/kg

