

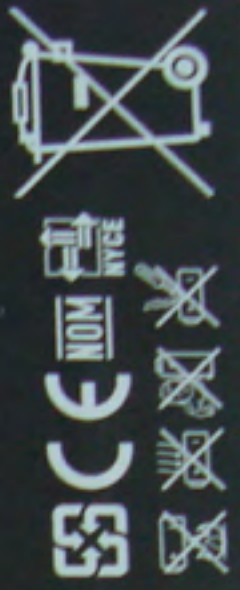


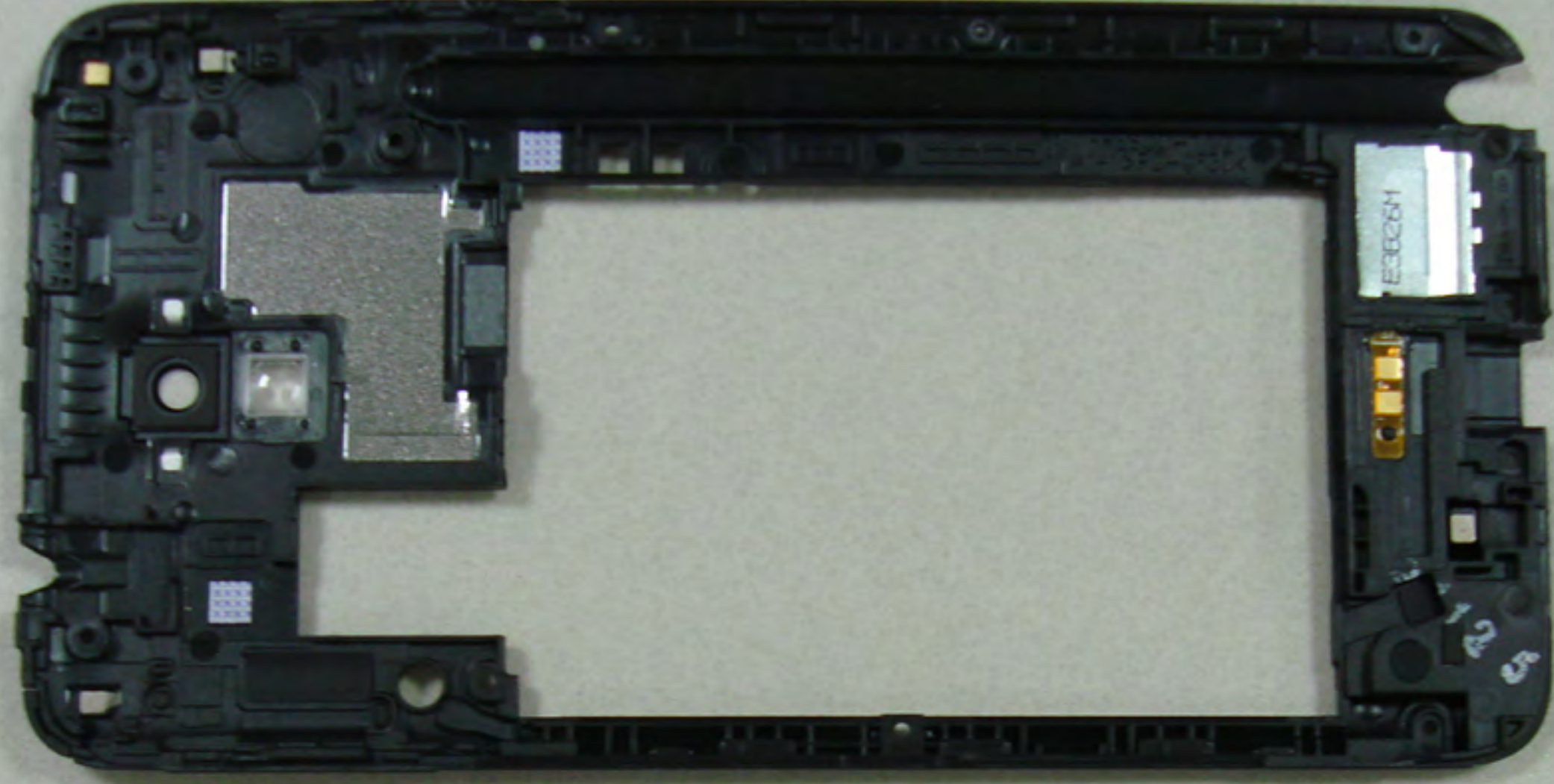
MOBILE PHONE
MODEL : SM-N7505
FCC ID : A3LSMN7505
SSN : -N7505GSMH
RATED : 3.8 V --- : 1300 mA
Fabriqué en Corée par Samsung
CE 0168
IMEI : 351539060035633
S/N : R31DB1SV14M

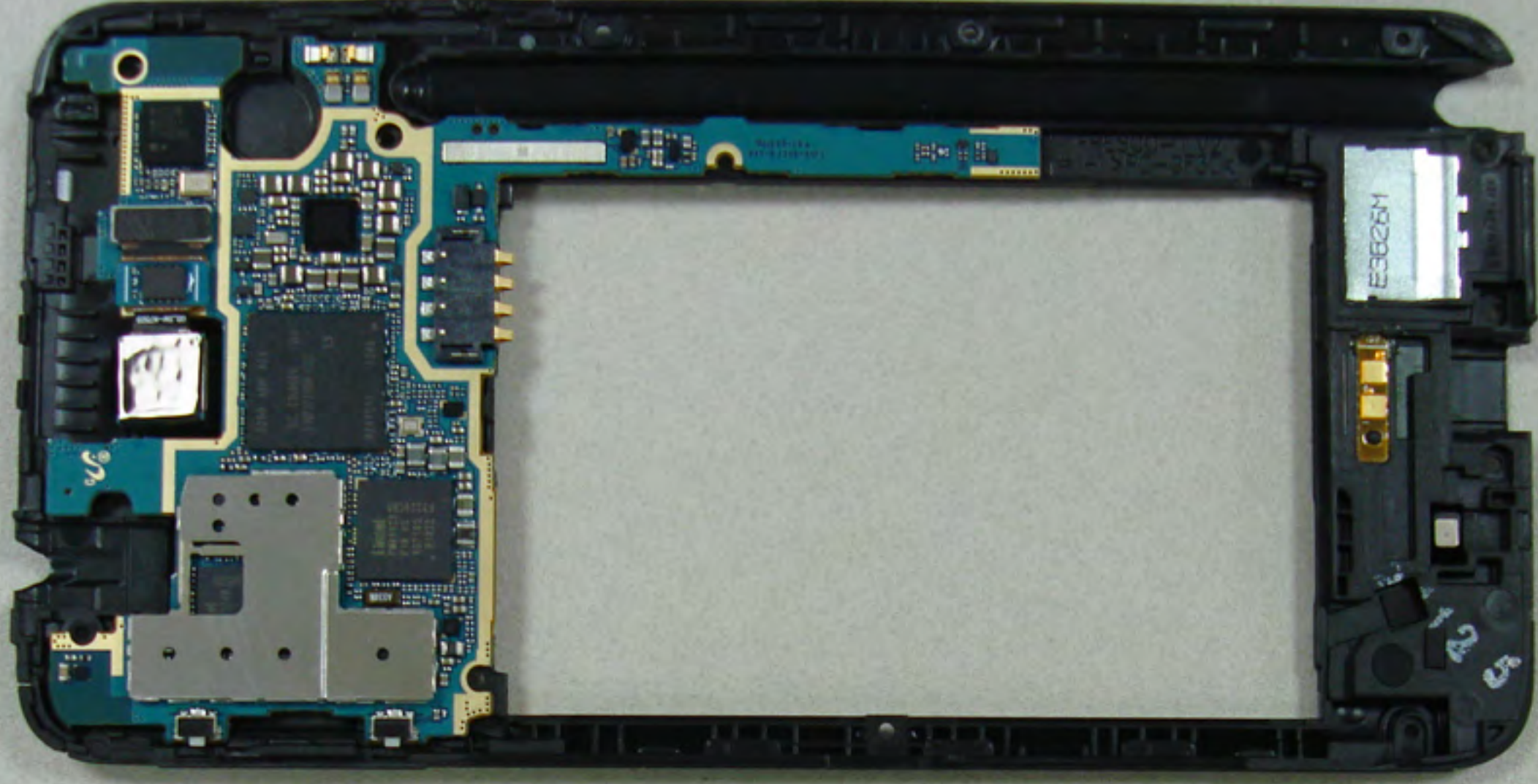
SAMSUNG
Near Field Communication

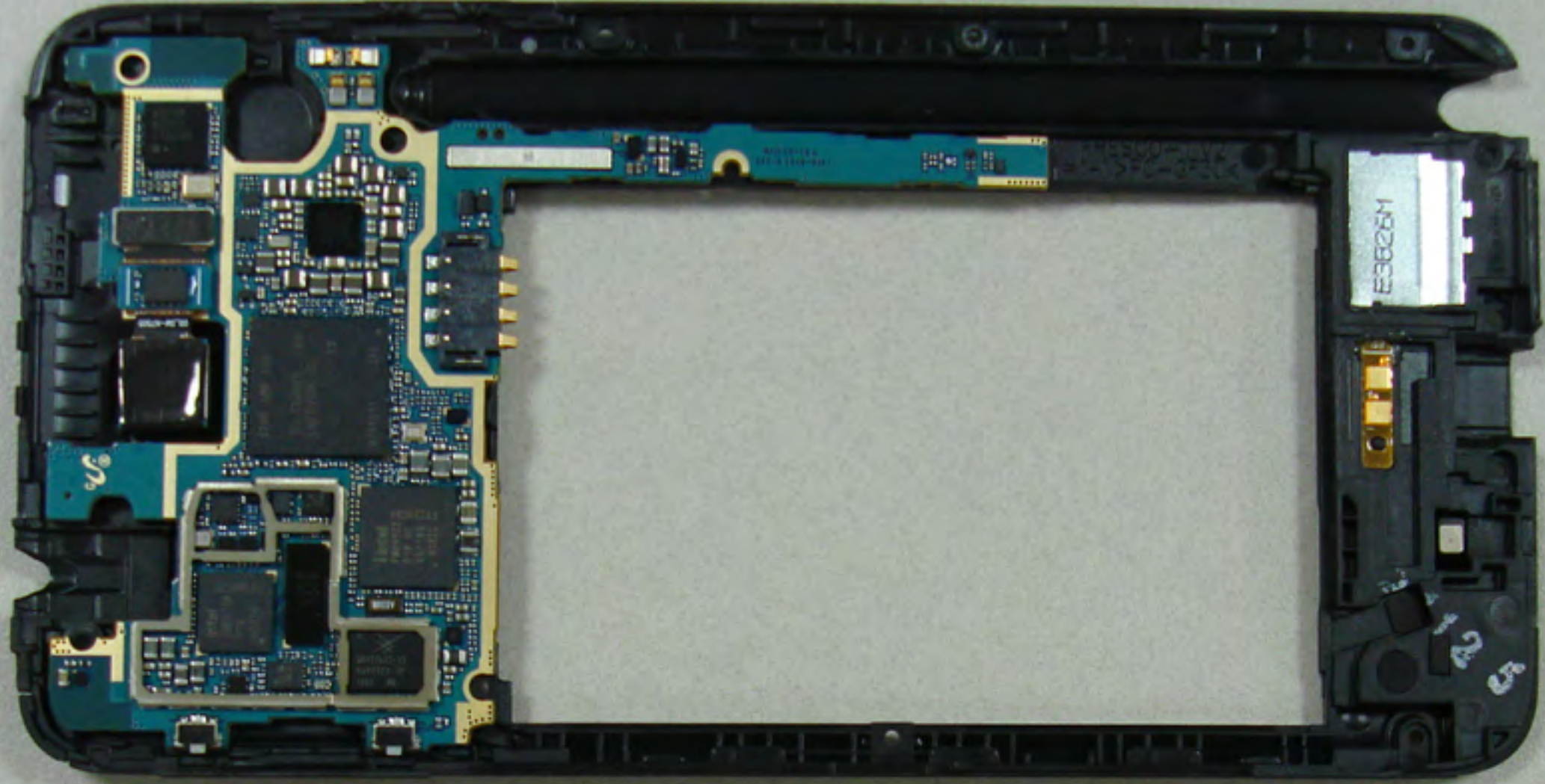
MADE IN KOREA / FABRIQUÉ EN CORÉE
ENSAMBLADO EN COREA / MONTADO NA COREIA

3.8 V LI-ION BATTERY 3.8 V LI-ION BATTERY 11.78 Wh
3.8 V LI-ION BATERIA 3.8 V LI-ION BATERIA 11,78 Wh
電壓 3.8V 鋰離子 電池 / 韓國製造









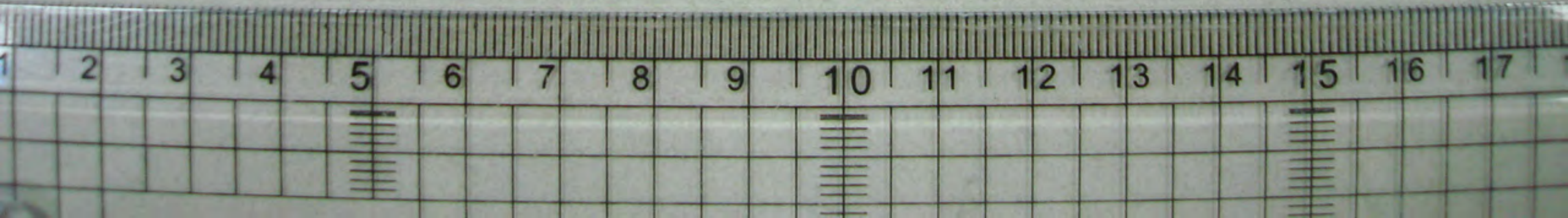


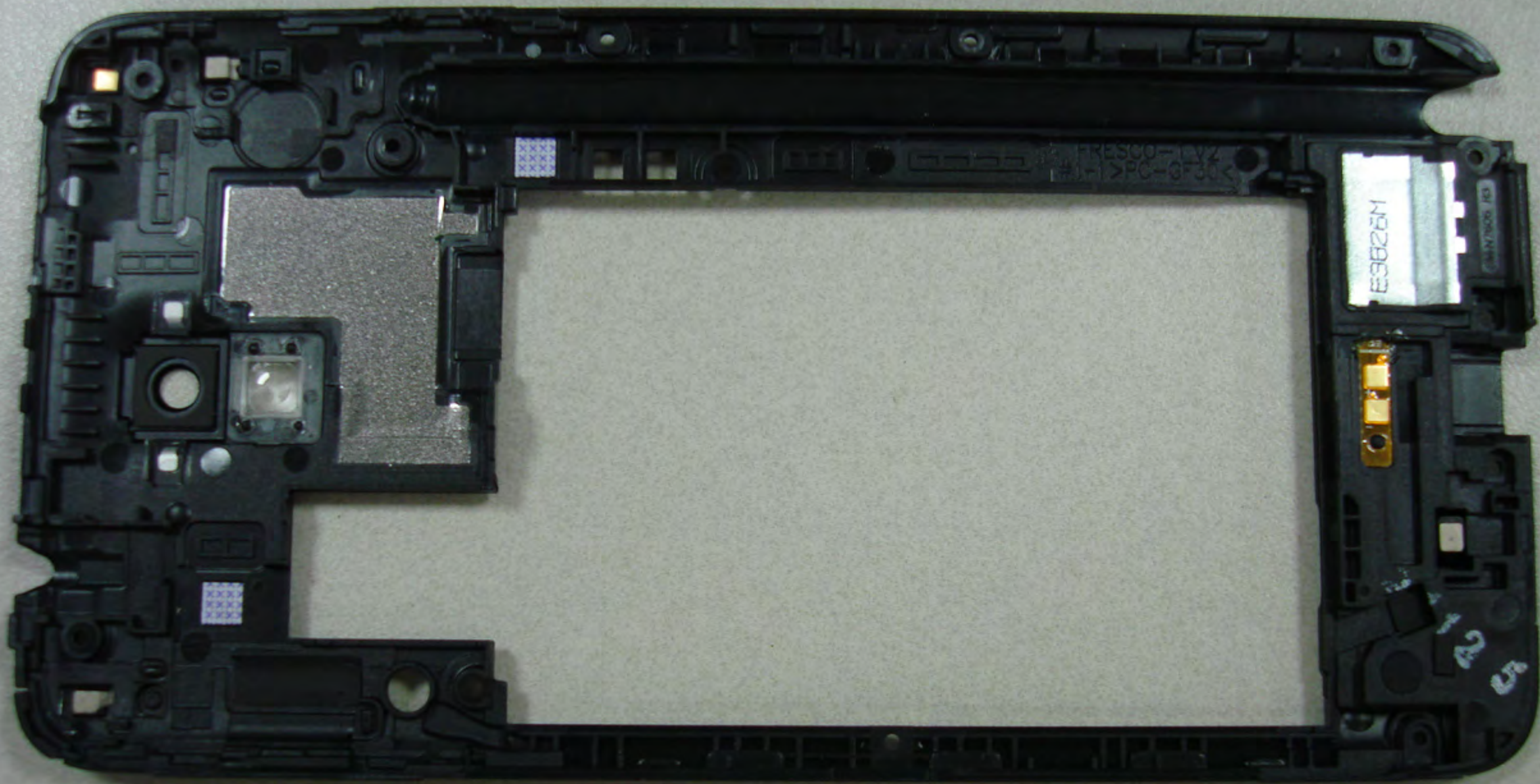
MOBILE PHONE
MODEL : SM-N7505
FCC ID : A3LSMN7505
SSN : -N7505GSMH
RATED : 3.8 V --- :1300 mA
Fabriqué en Corée par Samsung

CE 0168

IMEI : 351539060035633
S/N : R31DB1SV14M

HL SUB
Rev02
D8021 V2
491209
H-LITE



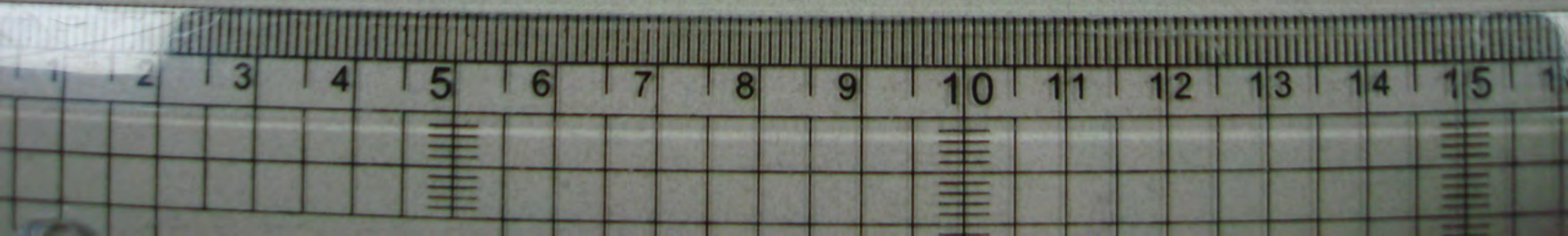


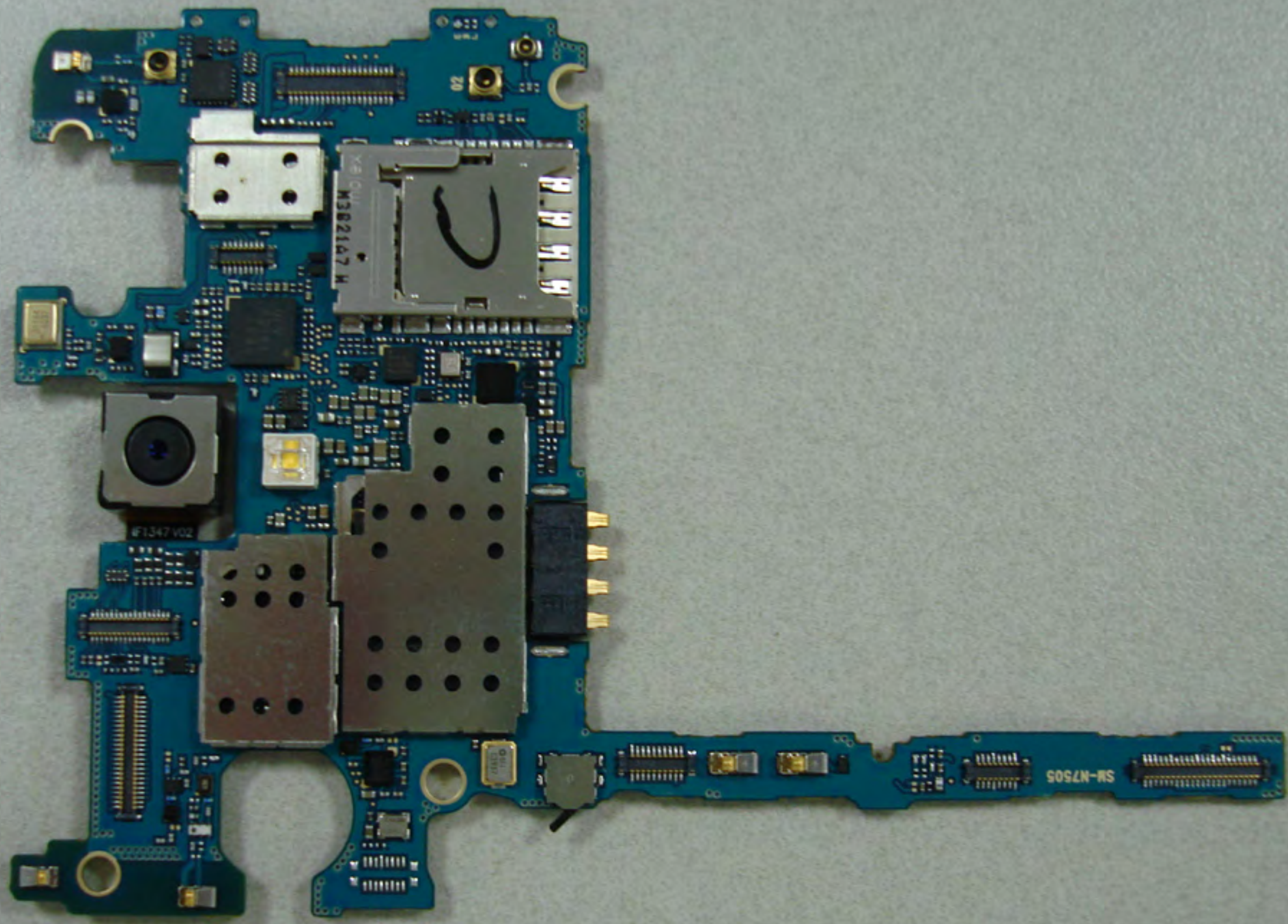
FRESCO T V2
PC-1073K

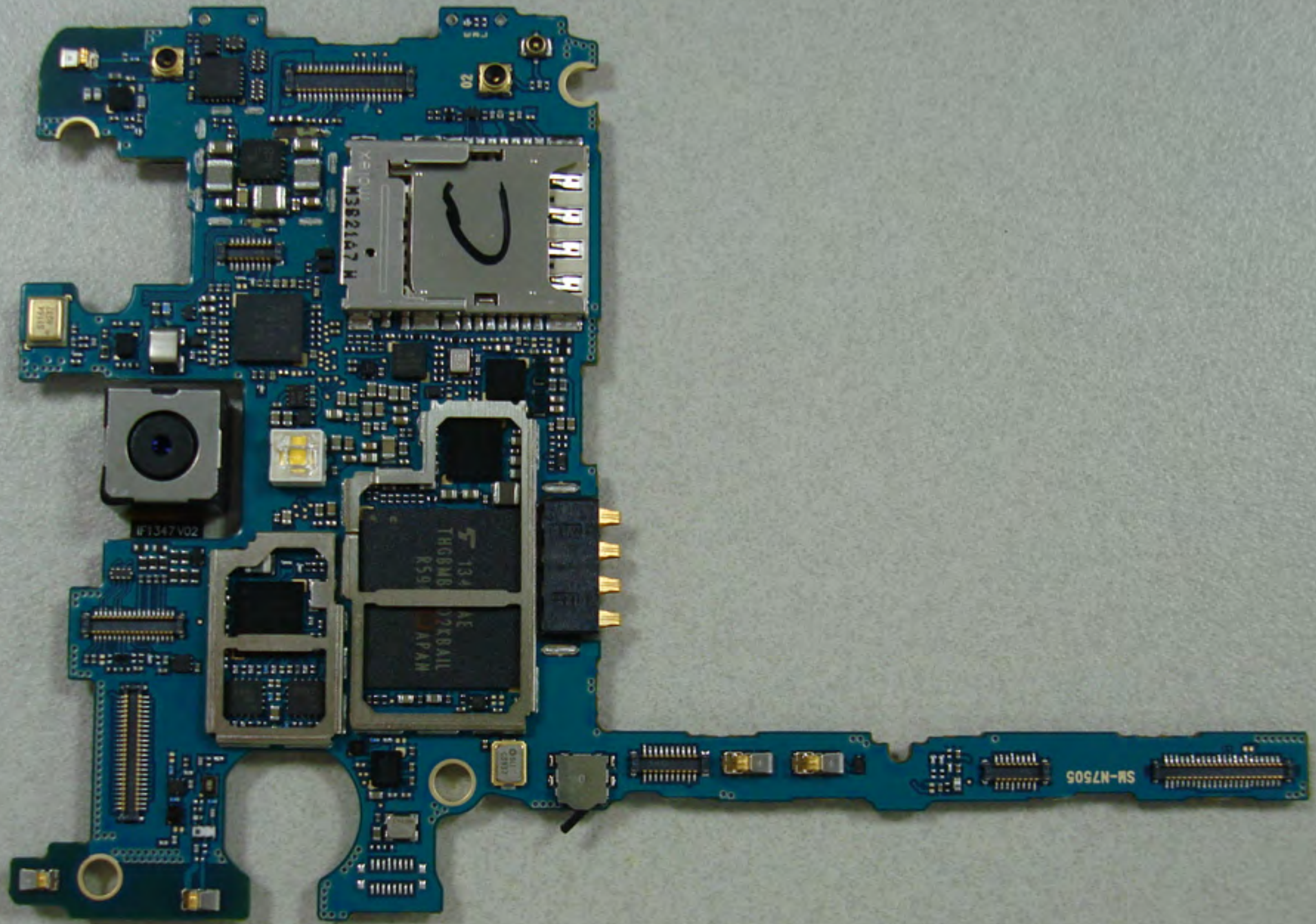
192863

192863

43
44







M3821A7 H

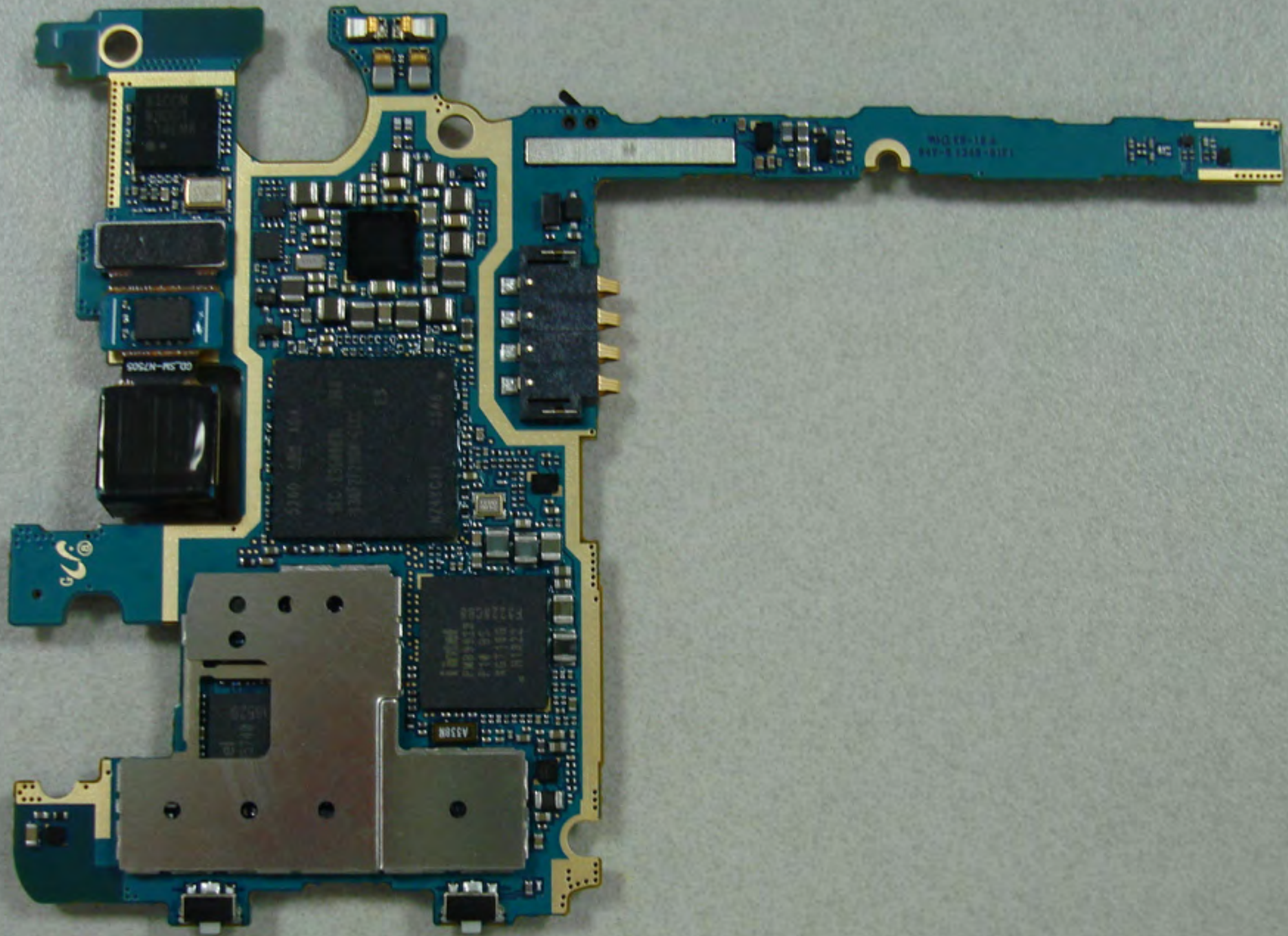
F1347 V02

134
THGMB
R59

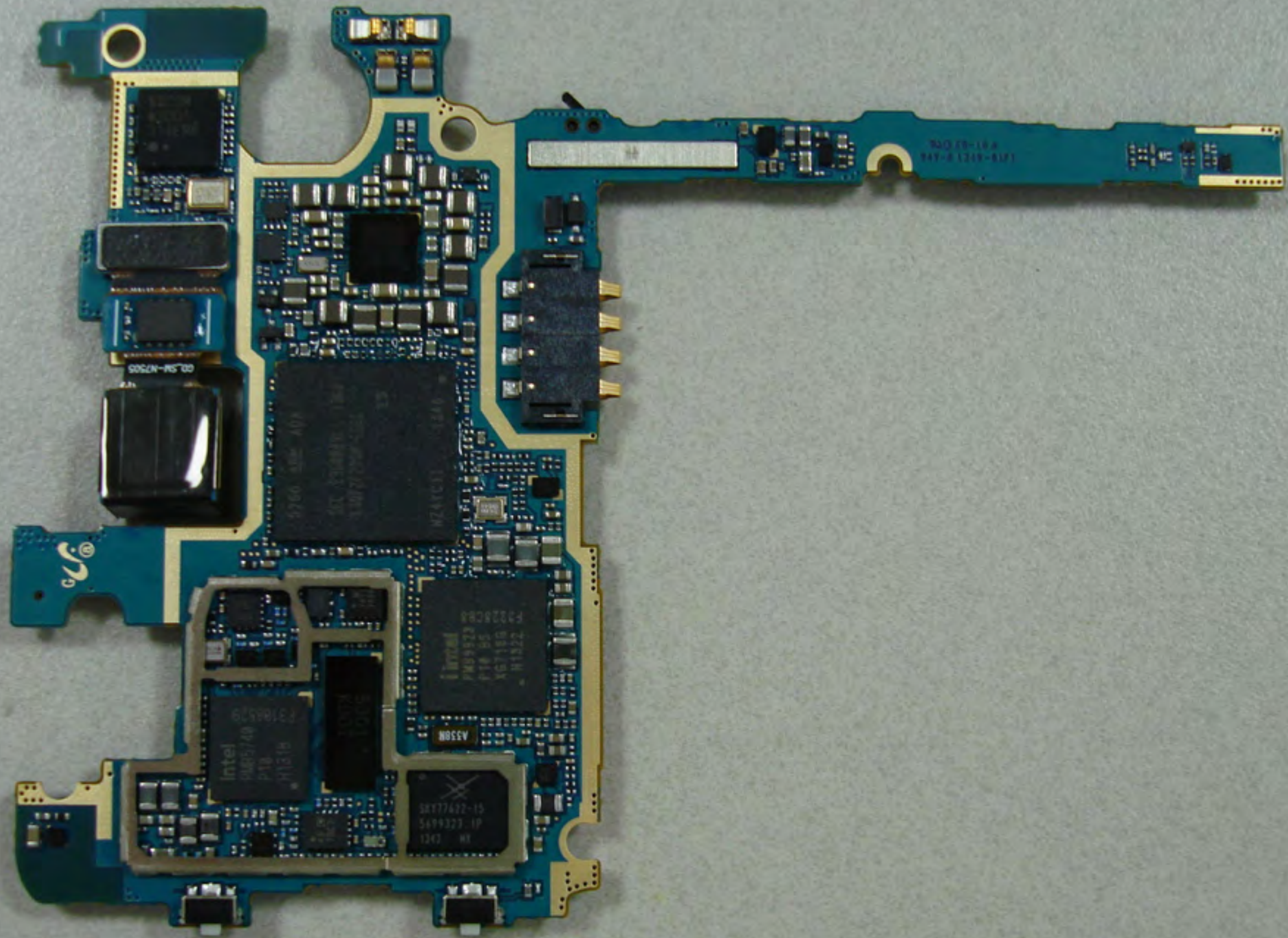
AE
72XBAL
APAN

SM-N7505





0 1 2 3 4 5 6 7 8 9 10 11 12 13







RL-34-381-1



2

3

4

5

6

7

8

9