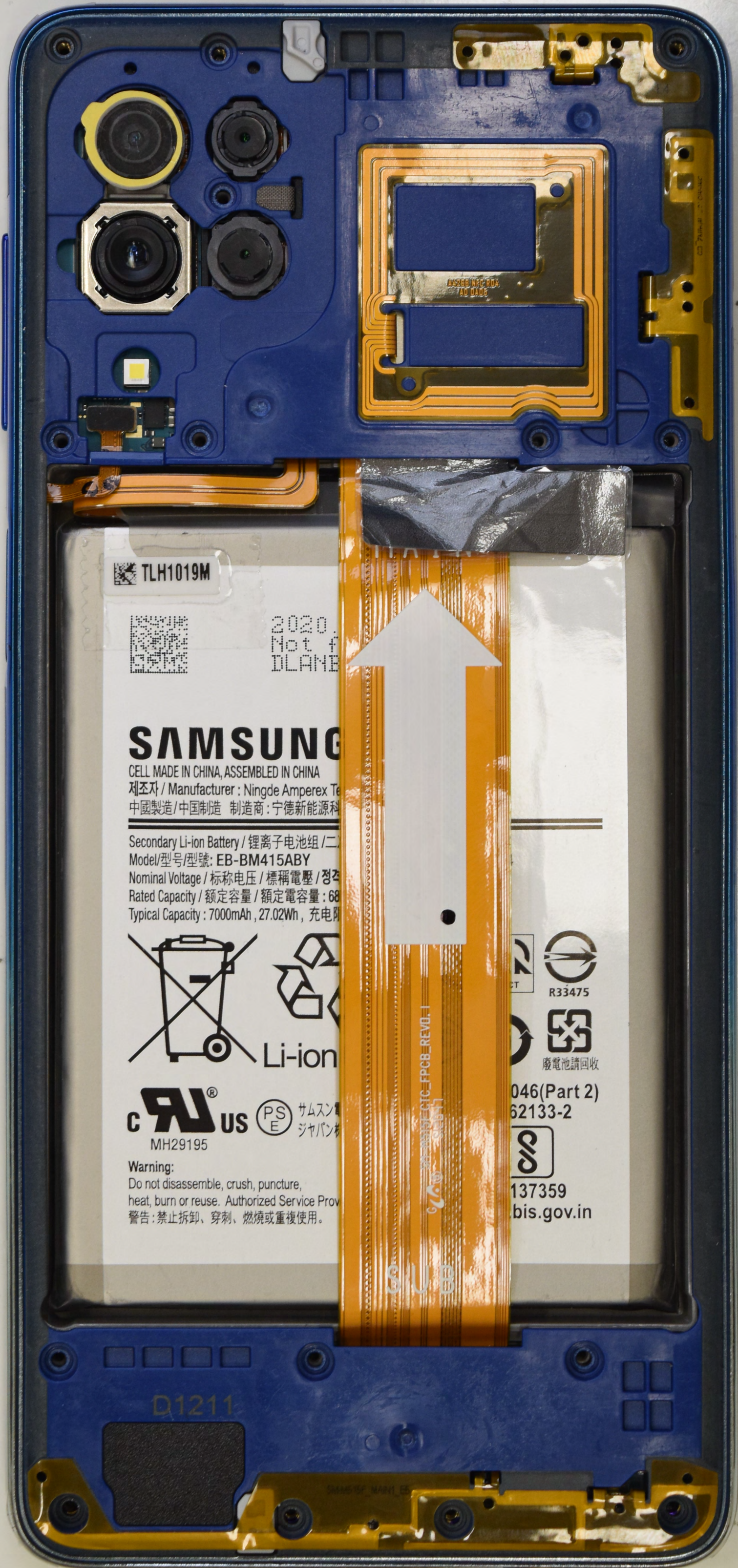


S/N : R38NB02MKR.J      SM-E625F/05  
IMEI : 35064103100010714  
IMEI : 35194521100010710      128GB

B1142



TLH1019M



2020  
Not f  
DLANE

# SAMSUNG

CELL MADE IN CHINA, ASSEMBLED IN CHINA  
제조사 / Manufacturer : Ningde Amperex Te  
中國製造 / 中国制造 制造商 : 宁德新能源科

Secondary Li-ion Battery / 锂离子电池组 / 二  
Model/型号/型號: EB-BM415ABY  
Nominal Voltage / 标称电压 / 標稱電壓 / 정격  
Rated Capacity / 额定容量 / 額定電容量 : 68  
Typical Capacity : 7000mAh, 27.02Wh, 充電附



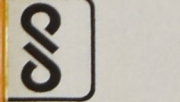
Li-ion



Warning:  
Do not disassemble, crush, puncture,  
heat, burn or reuse. Authorized Service Prov  
警告: 禁止拆卸、穿孔、燃燒或重複使用。



046(Part 2)  
62133-2



137359  
bis.gov.in

D1211

