

## **Appendix I. – Down-link CA Power Measurement / 5G NR Call Box Setup**

## 1. LTE Down-link Carrier Aggregation Conducted Powers

SAR test exclusion for LTE downlink Carrier Aggregation is determined by power measurements according to the number component carriers (CCs) supported by test product implementation. For those configurations required by April 2018 TCBC Workshop notes, conducted power measurements with LTE Carrier Aggregation (CA) (downlink only) active are made in accordance to KDB Publication 941225 D05Av01r02. The RRC connection is only handled by one cell, the primary component carrier (PCC) for downlink and uplink communications. After making a data connection to the PCC, the UE device adds secondary component carrier(s) (SCC) on the downlink only.

### Downlink Carrier aggregation:

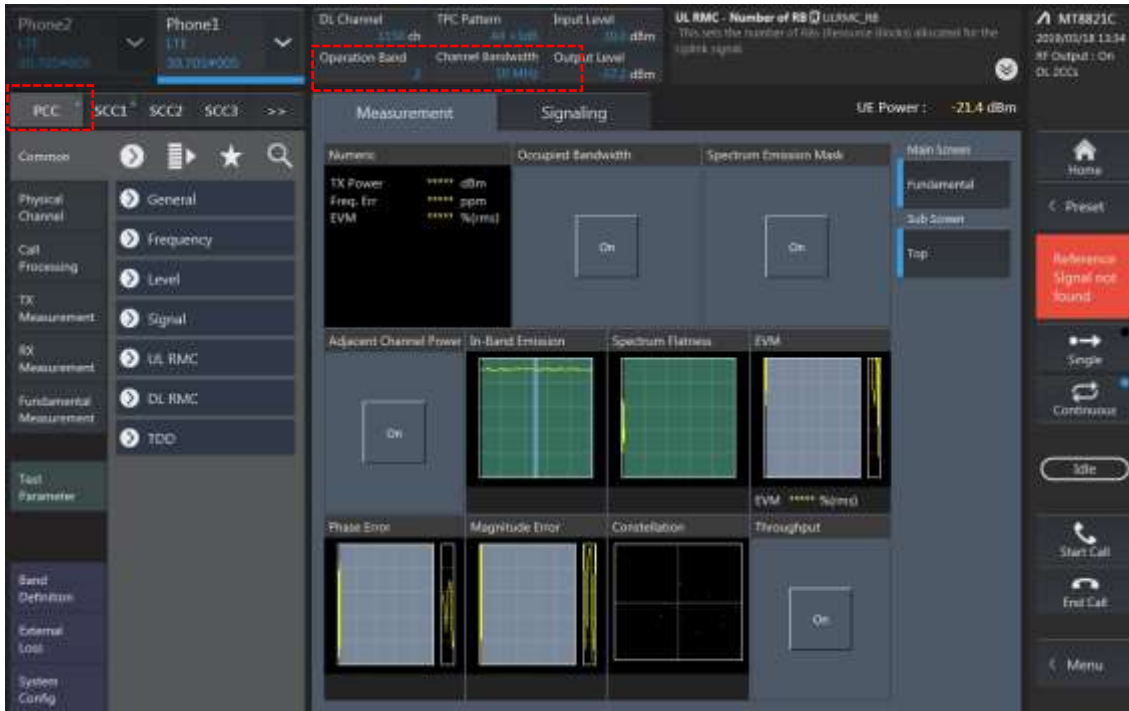
1. This device only supports downlink carrier aggregation. For every supported combination of downlink carrier aggregation, power measurements were performed with the downlink carrier aggregation active for the configuration with highest measured maximum conducted power with downlink carrier aggregation inactive measured among the channel bandwidth, modulation, and RB combinations in each frequency band.
2. All control and acknowledge data is sent on uplink channels that operate identical to specifications when downlink carrier aggregation is inactive.
3. Per FCC KDB publication 941225 D05A v01r02, Section C)3)b)ii), PCC uplink channel was selected at downlink carrier aggregation combinations. The downlink PCC channel was paired with the selected PCC uplink channel according to normal configurations without carrier aggregation.
4. For continuous intra-band carrier aggregation, the downlink channel spacing between the component carriers was set to multiple of 300kHz less than the nominal channel spacing defined in section 5.4.1A of 3GPP TS 36.521.
5. For non-continuous intra-band carrier aggregation, the downlink channel spacing between the component carriers was set to be larger than the nominal channel spacing and provided maximum separation between the component carriers.
6. All selected downlink channels remained fully within the downlink transmission band of the respective component carrier.



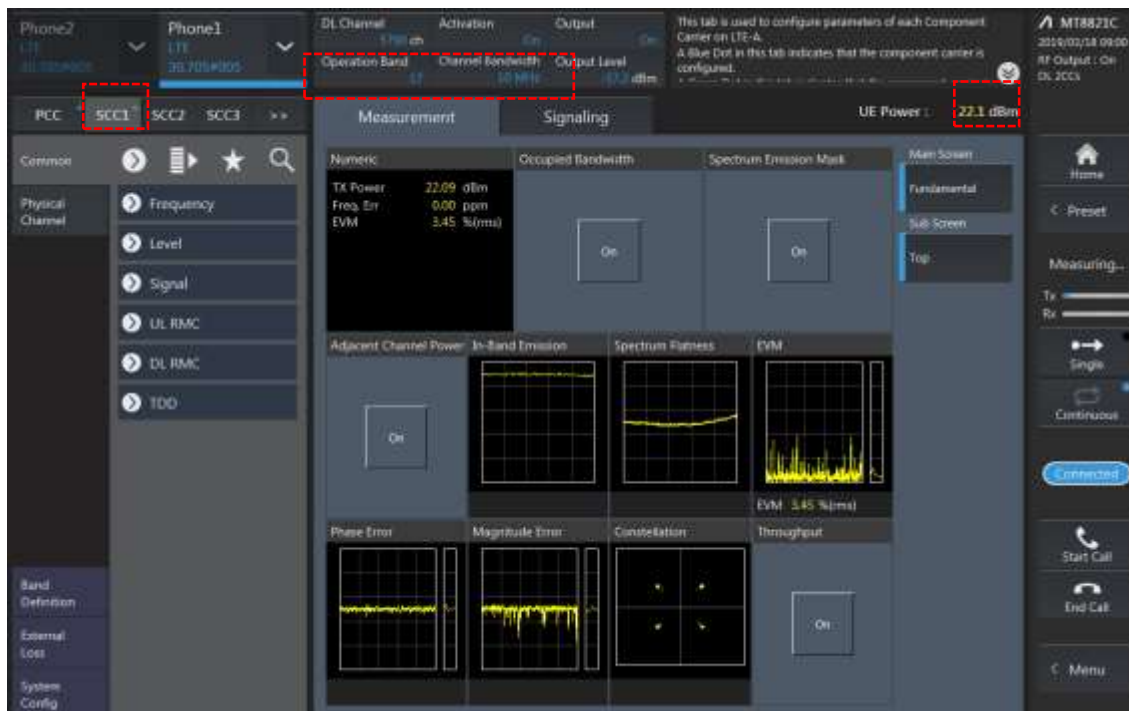
Power Measurement setup

### LTE Down Link 2CA Call Setup

PCC Setting: Channel/ RB/ BW/ Modulation



SCC Setting: Channel/ RB/ BW/ Modulation and call Connection

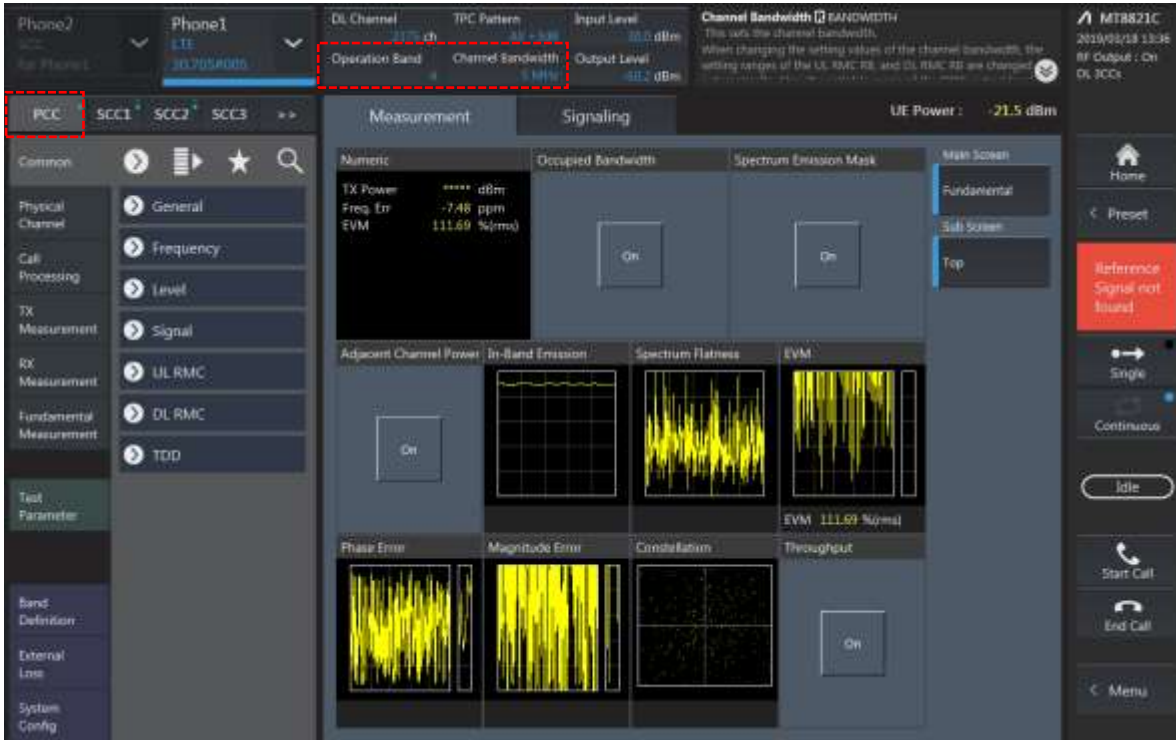


## 2CA Downlink Carrier aggregation Maximum conducted Powers

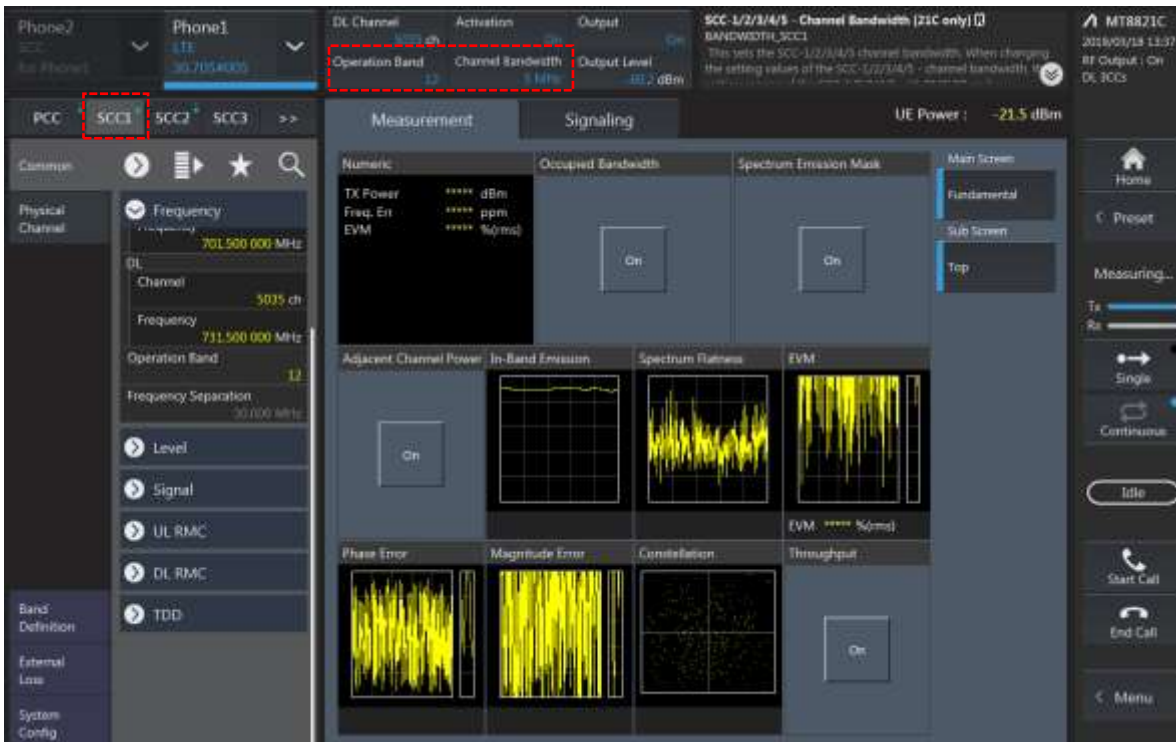
Combination	PCC										SCC				Tx Power		Deviation(dB) (2)-(1)
	Band	BW	PCC UL Channel	PCC UL Frequency	PCC DL Channel	PCC DL Frequency	Modulation	RB	offset	Band	BW	SCC DL Channel	SCC DL Frequency	LTE Single Carrier Tx Power (dBm) (1)	LTE Tx Power with DL CA Enabled(dBm) (2)		
2A-2A	2	20	18900	1880	900	1960	QPSK	1	49	2	20	700	1940	24.53	24.51	-0.02	
2C	2	20	18900	1880	900	1960	QPSK	1	49	2	20	702	1940.2	24.53	24.52	-0.01	
2A-5A(0)	2	20	18900	1880	900	1960	QPSK	1	49	5	10	2525	829	24.53	24.45	-0.08	
2A-5A(1)	2	10	18650	1855	650	1935	QPSK	1	24	5	10	2525	829	24.3	24.19	-0.11	
2A-5A(0)	5	5	20525	836.5	2525	881.5	QPSK	1	12	2	20	900	1960	24.51	24.47	-0.04	
2A-5A(1)	5	5	20525	836.5	2525	881.5	QPSK	1	12	2	20	900	1960	24.51	24.47	-0.04	
2A-12A(0,1)	2	20	18900	1880	900	1960	QPSK	1	49	12	10	5095	737.5	24.53	24.42	-0.11	
2A-12A(2)	2	10	18650	1855	650	1935	QPSK	1	24	12	10	5095	737.5	24.3	24.20	-0.10	
2A-12A(0)	12	5	23035	701.5	5035	731.5	QPSK	1	12	2	20	900	1960	22.79	22.73	-0.06	
2A-12A(1)	12	3	23025	700.5	5025	730.5	QPSK	1	7	2	20	900	1960	22.88	22.82	-0.06	
2A-12A(2)	12	5	23035	701.5	5035	731.5	QPSK	1	12	2	10	900	1960	22.79	22.72	-0.07	
2A-17A	2	10	18650	1855	650	1935	QPSK	1	24	17	10	5790	740	24.3	24.26	-0.04	
2A-17A	17	10	23790	710	5790	740	QPSK	1	0	2	10	900	1960	22.7	22.66	-0.04	
4A-5A(0,1)	4	10	20175	1732.5	2175	2132.5	QPSK	1	24	5	10	2525	881.5	24.17	24.14	-0.03	
4A-5A(0,1)	5	5	20525	836.5	2525	881.5	QPSK	1	12	4	10	2175	2132.5	24.51	24.46	-0.05	
4A-17A	4	10	20175	1732.5	2175	2132.5	QPSK	1	24	17	10	5790	740	24.17	24.11	-0.06	
4A-17A	17	10	23790	710	5790	740	QPSK	1	0	4	10	2175	2132.5	22.7	22.62	-0.08	
5A-41A	5	5	20525	836.5	2525	881.5	QPSK	1	12	41	20	40620	2593	24.51	24.42	-0.09	
5A-41A	41	20	41490	2680	41490	2680	QPSK	1	49	5	10	2525	881.5	24.68	24.66	-0.02	
66B	66	15	132597	1772.5	67061	2192.5	QPSK	1	0	66	5	66968	2183.2	23.99	23.89	-0.10	
66C	66	15	132597	1772.5	67061	2192.5	QPSK	1	0	66	20	66890	2175.4	23.99	23.92	-0.07	

### LTE Down Link 3CA Call Setup

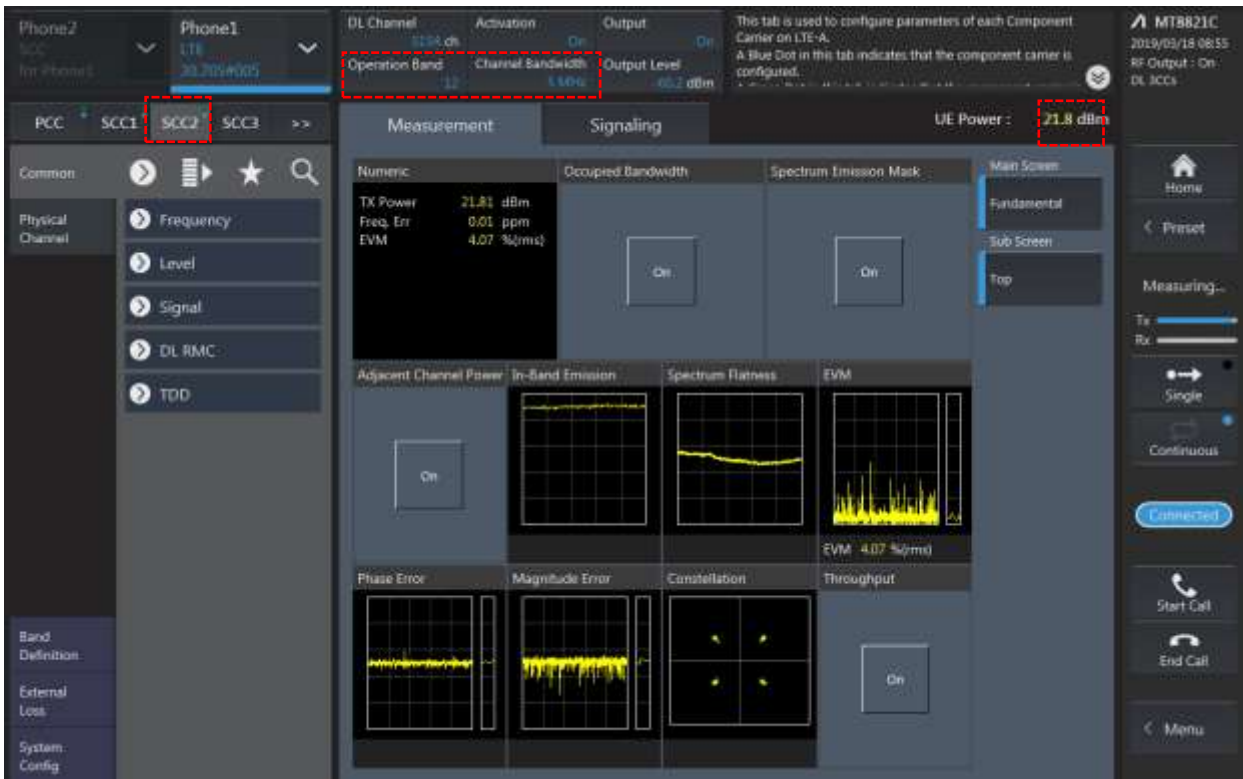
#### 1) PCC Setting: Channel /RB/BW/Modulation



#### 2) SCC1 Setting: Channel /RB/BW/Modulation



3) SCC2 Setting (Channel /RB/BW/Modulation) and call Connection

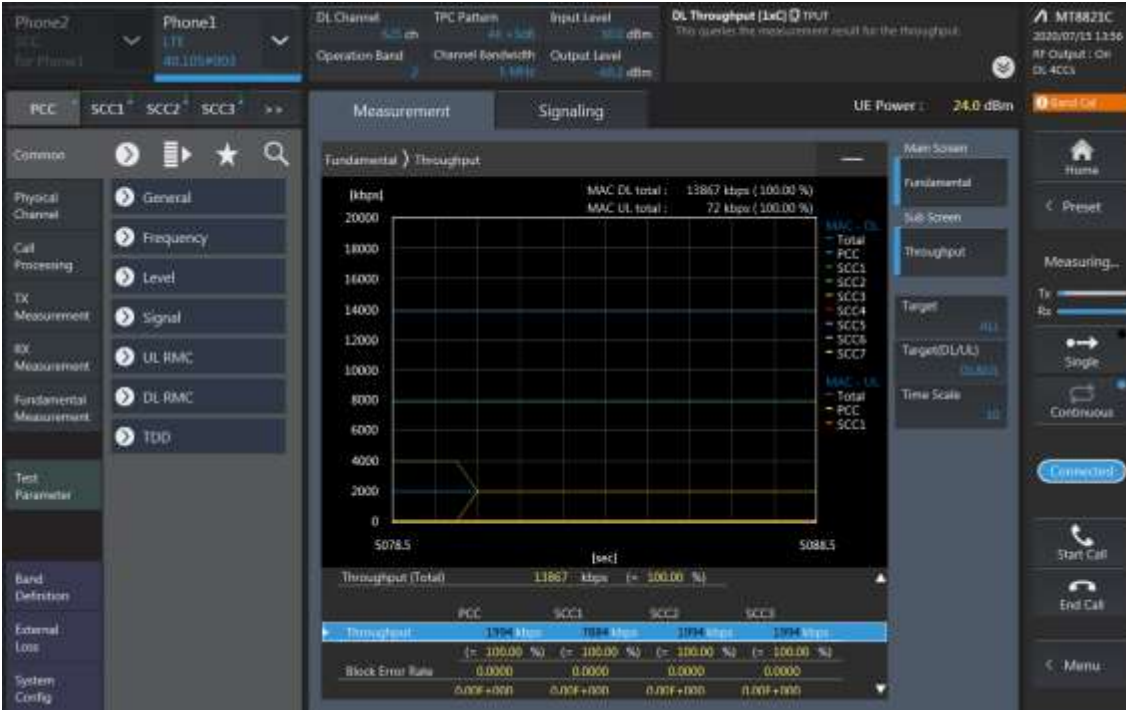


### 3CA Downlink Carrier aggregation Maximum conducted Powers

Combination	PCC									SCC				SCC				Tx Power		Deviation(dB) (2)-(1)
	Band	BW	PCC UL Channel	PCC UL Frequency	PCC DL Channel	PCC DL Frequency	Modulation	RB	offset	Band	BW	SCC DL Channel	SCC DL Frequency	Band	BW	SCC DL Channel	SCC DL Frequency	LTE Single Carrier Tx Power (dBm) (1)	LTE Tx Power with DL CA Enabled (dBm) (2)	
4A-4A-12A(0,1)	4	10	20175	1732.5	2175	2132.5	QPSK	1	24	4	10	2000	2115	12	10	5095	737.5	24.17	24.08	-0.09
4A-4A-12A(0,1)	12	5	23035	701.5	5035	731.5	QPSK	1	12	4	10	2000	2115	4	10	2175	2132.5	22.79	22.75	-0.04
5A-66A-66A	5	5	20525	836.5	2525	881.5	QPSK	1	12	66	20	66786	2165	66	20	66536	2140	24.51	24.44	-0.07
5A-66A-66A	66	20	132572	1770	67036	2190	QPSK	1	49	66	20	66536	2140	5	20	2525	881.5	23.99	23.98	-0.01
12A-66A-66A	12	5	23035	701.5	5035	731.5	QPSK	1	12	66	20	66786	2165	66	20	66536	2120	22.79	22.74	-0.05
12A-66A-66A	66	15	132597	1772.5	67061	2192.5	QPSK	1	0	66	20	66536	2140	12	5	5095	737.5	23.99	23.97	-0.02
26A-41C	26	15	26865	831.5	8865	876.5	QPSK	1	36	41	20	39750	2506	41	20	39948	2525.8	22.85	22.79	-0.06
26A-41C	41	10	40185	2549.5	40185	2549.5	QPSK	1	24	41	10	40086	2539.6	26	15	8865	876.5	24.71	24.64	-0.07
41A-41C	41	10	40185	2549.5	40185	2549.5	QPSK	1	24	41	20	41292	2660.2	41	20	41490	2680	24.71	24.62	-0.09
41A-41C	41	10	40185	2549.5	40185	2549.5	QPSK	1	24	41	20	40329	2563.9	41	20	41490	2680	24.71	24.67	-0.04
41D	41	10	40185	2549.5	40185	2549.5	QPSK	1	24	41	20	40329	2563.9	41	20	40527	2583.7	24.71	24.62	-0.09

**LTE Down Link 4CA Call Setup**

PCC Setting: Channel /RB/BW/Modulation

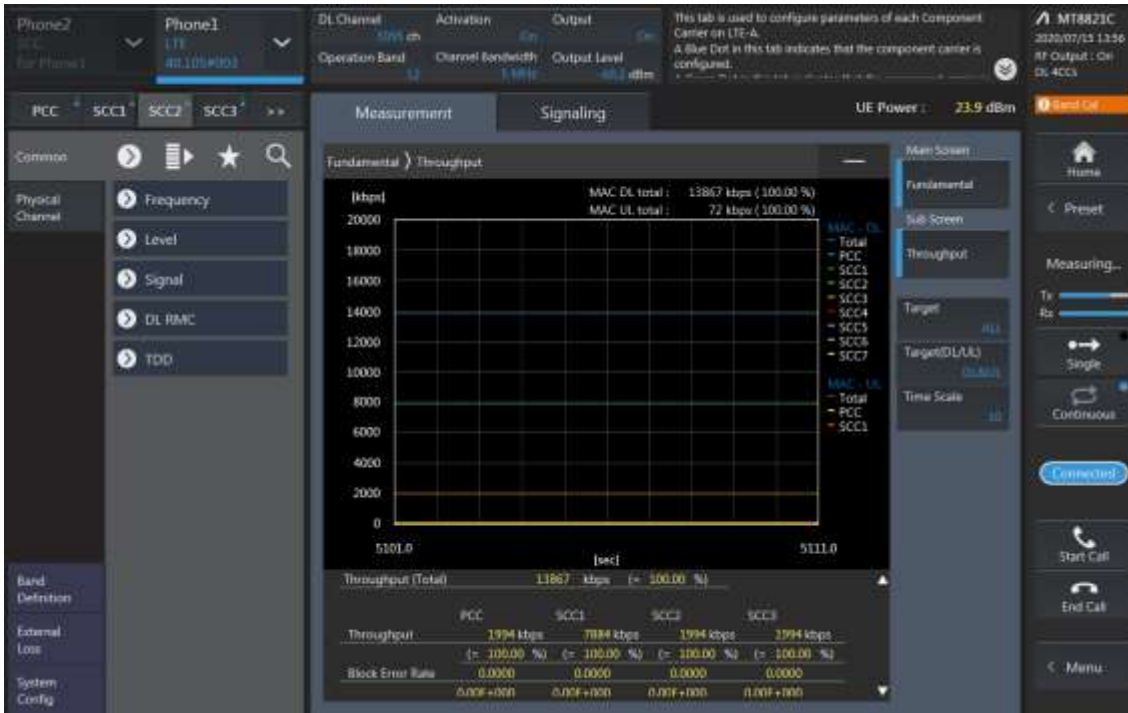


**SCC1 Setting (Channel /RB/BW/Modulation)and call Connection**

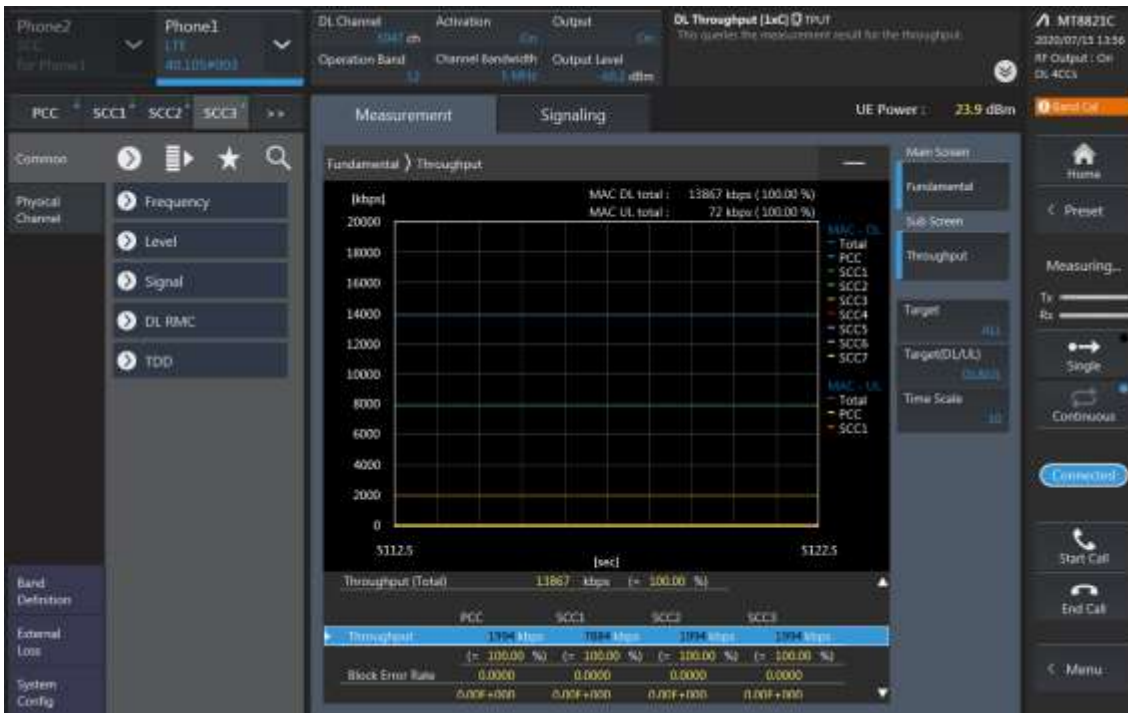




SCC2 Setting (Channel /RB/BW/Modulation )and call Connection



SCC3 Setting (Channel /RB/BW/Modulation )and call Connection

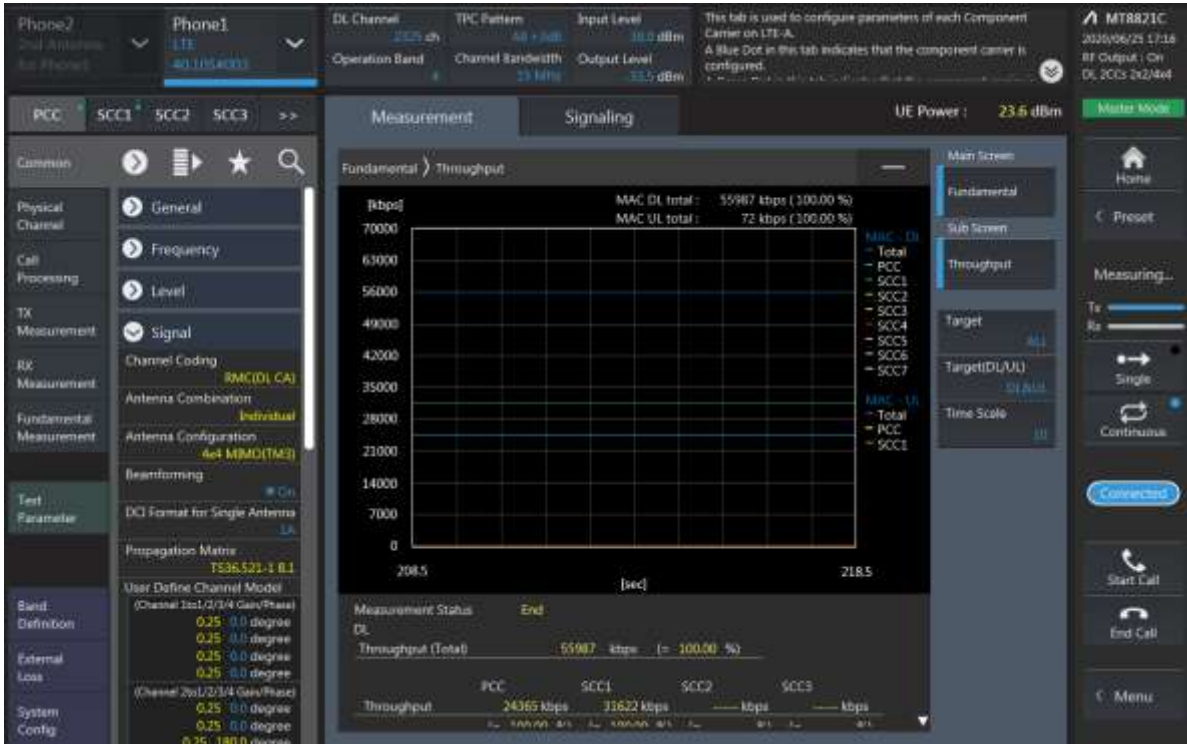


### 4CA Downlink Carrier aggregation Maximum conducted Powers

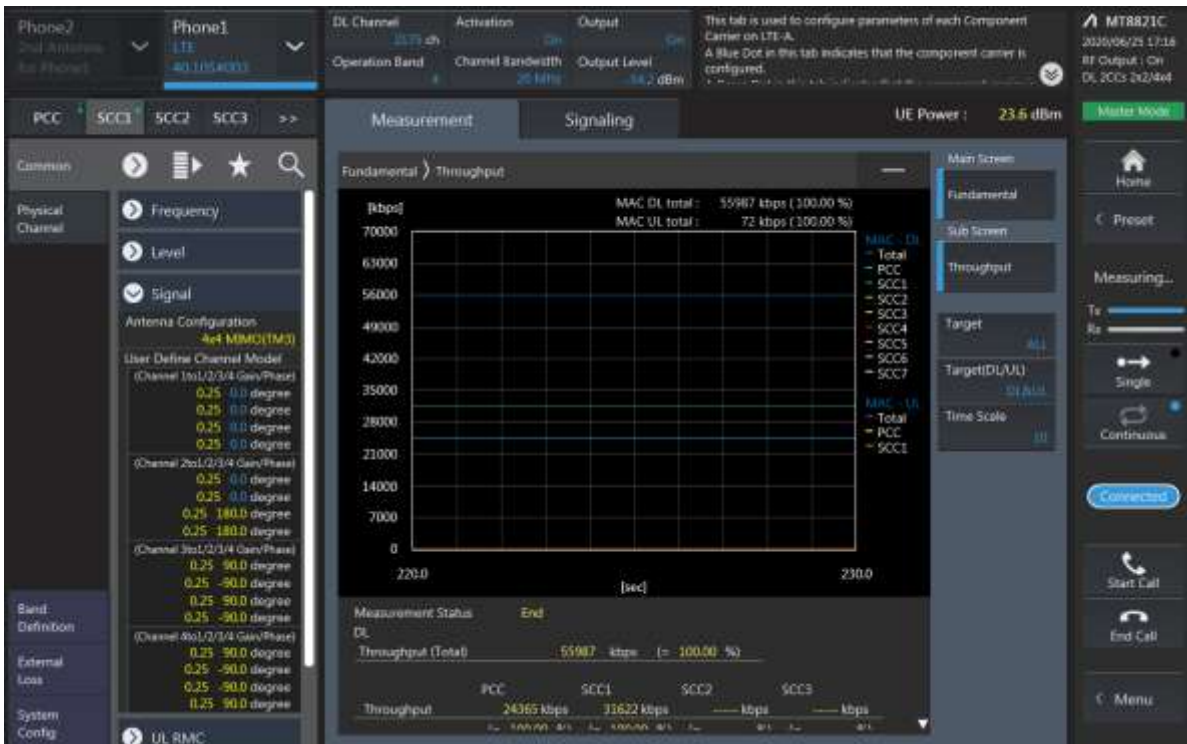
Combination	PCC									SCC				SCC				SCC				Tx Power		Deviation(dB) (2)-(1)
	Band	BW	PCC UL Channel	PCC UL Frequency	PCC DL Channel	PCC DL Frequency	Modulation	RB	offset	Band	BW	SCC DL Channel	SCC DL Frequency	Band	BW	SCC DL Channel	SCC DL Frequency	Band	BW	SCC DL Channel	SCC DL Frequency	LTE Single Carrier Tx Power (dBm) (1)	LTE Tx Power with DL CA Enabled(dBm) (2)	
41C-41C	41	10	40185	2549.5	40185	2549.5	QPSK	1	24	41	20	40041	2535.1	41	20	41292	2660.2	41	20	41490	2680	24.71	24.66	-0.05
41A-41D	41	10	40185	2549.5	40185	2549.5	QPSK	1	24	41	20	41094	2640.4	41	20	41292	2660.2	41	20	41490	2680	24.71	24.68	-0.03
41A-41D	41	10	40185	2549.5	40185	2549.5	QPSK	1	24	41	20	40329	2563.9	41	20	40527	2583.7	41	20	41490	2680	24.71	24.71	0
41E	41	20	41490	2680	41490	2680	QPSK	1	49	41	20	41292	2660.2	41	20	41094	2640.4	41	20	40896	2620.6	24.68	24.69	0.01

**LTE Down Link 2CA 4x4 MIMO Call Setup**

PCC Setting: Channel/ RB/ BW/ Modulation



SCC Setting: Channel/ RB/ BW/ Modulation and call Connection

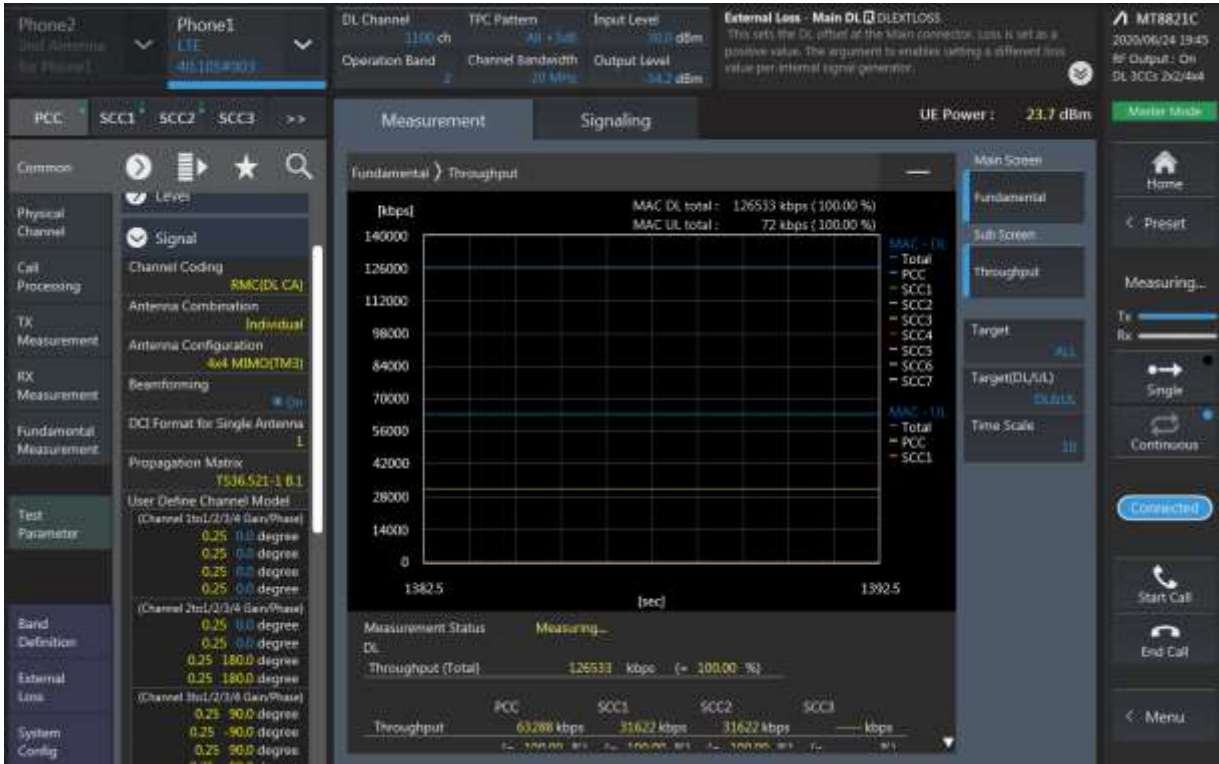


**LTE Downlink 2CA 4X4 MIMO Maximum Conducted Power**

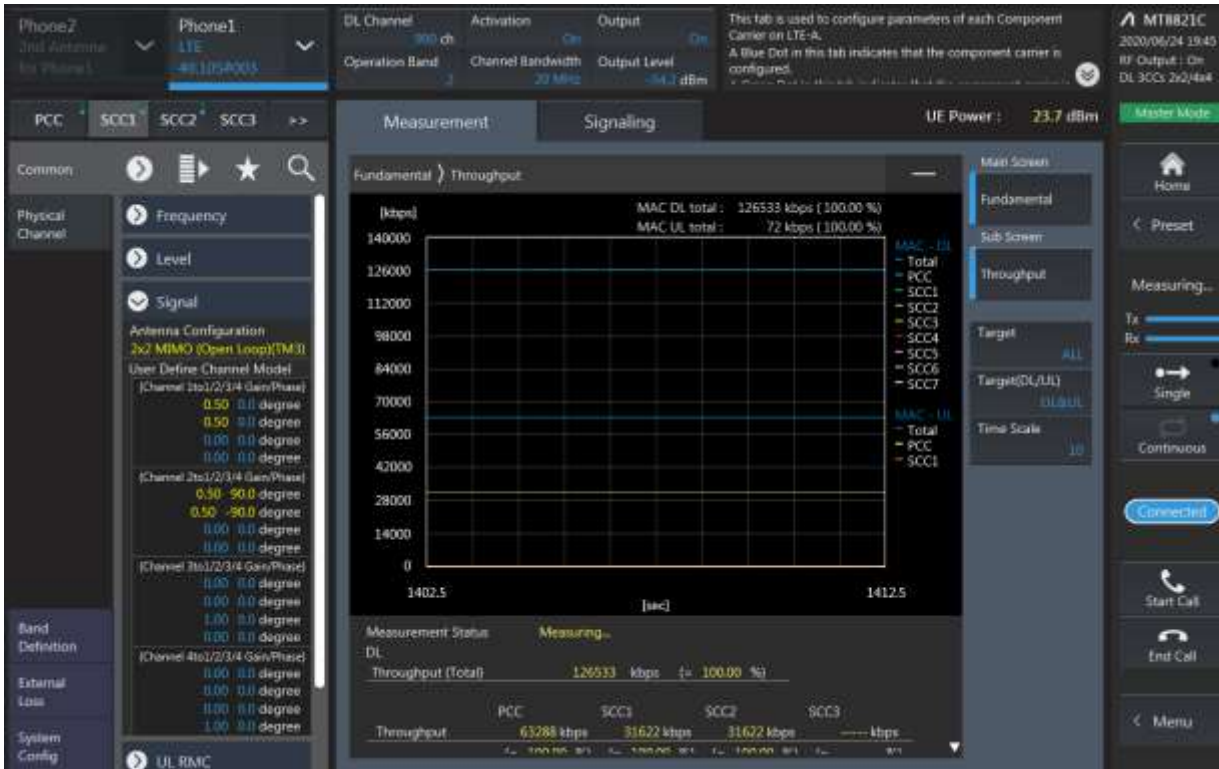
Combination	PCC									SCC				Tx Power		Deviaion(dB) (2)-(1)
	Band	BW	PCC UL Channel	PCC UL Frequency	PCC DL Channel	PCC DL Frequency	Modulation	RB	offset	Band	BW	SCC DL Channel	SCC DL Frequency	LTE Single Carrier Tx Power (dBm) (1)	LTE Tx Power with DL CA Enabled(dBm) (2)	
5A-[41A]	5	5	20525	836.5	2525	881.5	QPSK	1	12	41	20	40620	2593	24.51	24.49	-0.02
5A-[41A]	41	20	41490	2680	41490	2680	QPSK	1	49	5	10	2525	881.5	24.68	24.62	-0.06
26A-[41A]	26	15	26865	831.5	8865	876.5	QPSK	1	36	41	20	40620	2593	22.85	22.74	-0.11
26A-[41A]	41	20	41490	2680	41490	2680	QPSK	1	49	26	15	8865	876.5	24.68	24.59	-0.09
41A-[41A]	41	10	40185	2549.5	40185	2549.5	QPSK	1	24	41	20	41490	2680	24.71	24.67	-0.04
[41A]-41A	41	10	40185	2549.5	40185	2549.5	QPSK	1	24	41	20	41490	2680	24.71	24.68	-0.03

**LTE Down Link 3CA 4x4 MIMO Call Setup**

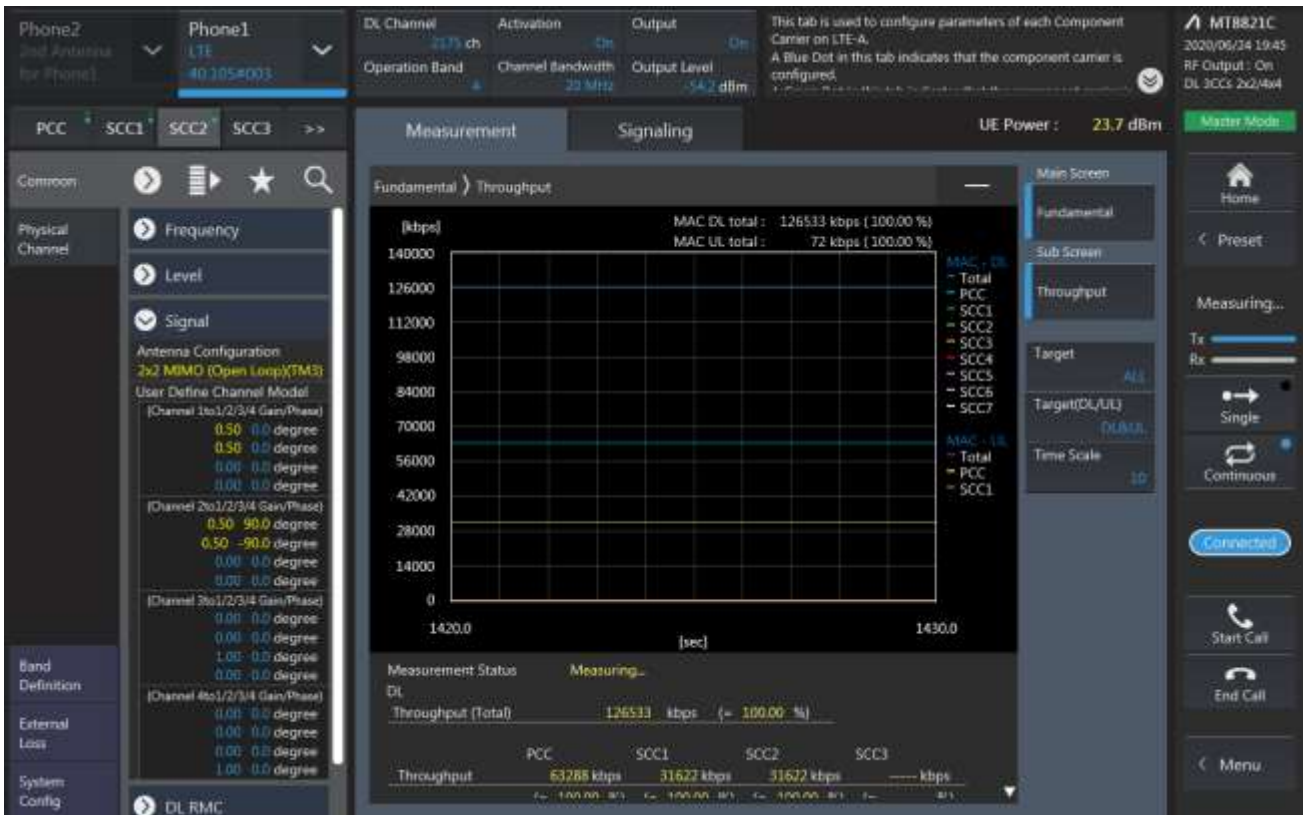
PCC Setting: Channel /RB/BW/Modulation



**SCC1 Setting: Channel /RB/BW/Modulation**



SCC2 Setting: (Channel /RB/BW/Modulation) and call Connection



**LTE Downlink 3CA 4X4 MIMO Maximum Conducted Power**

Combination	PCC									SCC				SCC				Tx Power		Deviaion(dB) (2)-(1)
	Band	BW	PCC UL Channel	PCC UL Frequency	PCC DL Channel	PCC DL Frequency	Modulation	RB	offset	Band	BW	SCC DL Channel	SCC DL Frequency	Band	BW	SCC DL Channel	SCC DL Frequency	LTE Single Carrier Tx Power (dBm) (1)	LTE Tx Power with DL CA Enabled(dBm) (2)	
26A-[41C]	26	15	26865	831.5	8865	876.5	QPSK	1	36	41	20	39750	2506	41	20	39948	2525.8	22.85	22.77	-0.08
26A-[41C]	41	10	40185	2549.5	40185	2549.5	QPSK	1	24	41	10	40086	2539.6	26	15	8865	876.5	24.71	24.75	0.04