

- INTERNAL PHOTOGRAPHS

■ Main / Bluetooth & WLAN Antenna Internal Photo

Antenna Location	FCC RF Band
Main#3	PRX+TX LTE B2/B66 (@M-M/M-H EN-DC Cases)
Sub#1	DRX GSM850,PCS1900 DRX WCDMA 2/4/5 DRX LTE B2/4/5/12/17/26/41/66 DRX NR n5/41/66 (SRS#D_NR n41)
Sub#2	GPS
Sub#3	
Sub#4	DRX MIMO LTE B41 DRX MIMO NR n41 (SRS#C_NR n41)
Sub#5	PRX MIMO LTE B41 PRX MIMO NR n41 (SRS#B_NR n41)
WLAN	WiFi 2.4GHz, 5GHz Bluetooth
NFC	NFC
Main#1	PRX+TX GSM850 PRX+TX WCDMA B5 PRX+TX LTE B5/12/17/26 PRX+TX NR n5
Main#2	PRX+TX PCS1900 PRX+TX WCDMA B2/4 PRX+TX LTE B2/4/41/66 PRX+TX NR n41/66 (SRS#A_NR n41)

The image shows the internal antenna layout of a Samsung smartphone. Key components are labeled as follows:

- Top:** Sub1 (lb/mb/hb drx), Sub5 (Hb prx mimo), WLAN (2.4G,5G), Sub2 (GPS)
- Right:** Sub4 (hb drx mimo)
- Left:** Main3 (MM ENDC)
- Bottom:** Main1(LB), Main2(MB/HB)
- Rear View:** A large label for the main antenna assembly with text: "SAMSUNG ASSEMBLY", "Pull out Li-ion battery", "D-5Y/312 SY", "SM-M346B MAIN C", "REV 0.1", "SUB", "OCTA", "D0401D".
- NFC:** A separate component labeled "NFC" with "MS4 R6" below it.

1. Internal Photo



2. Internal Photo



4. Internal Photo



5. Internal Photo



6. Internal Photo



7. Internal Photo



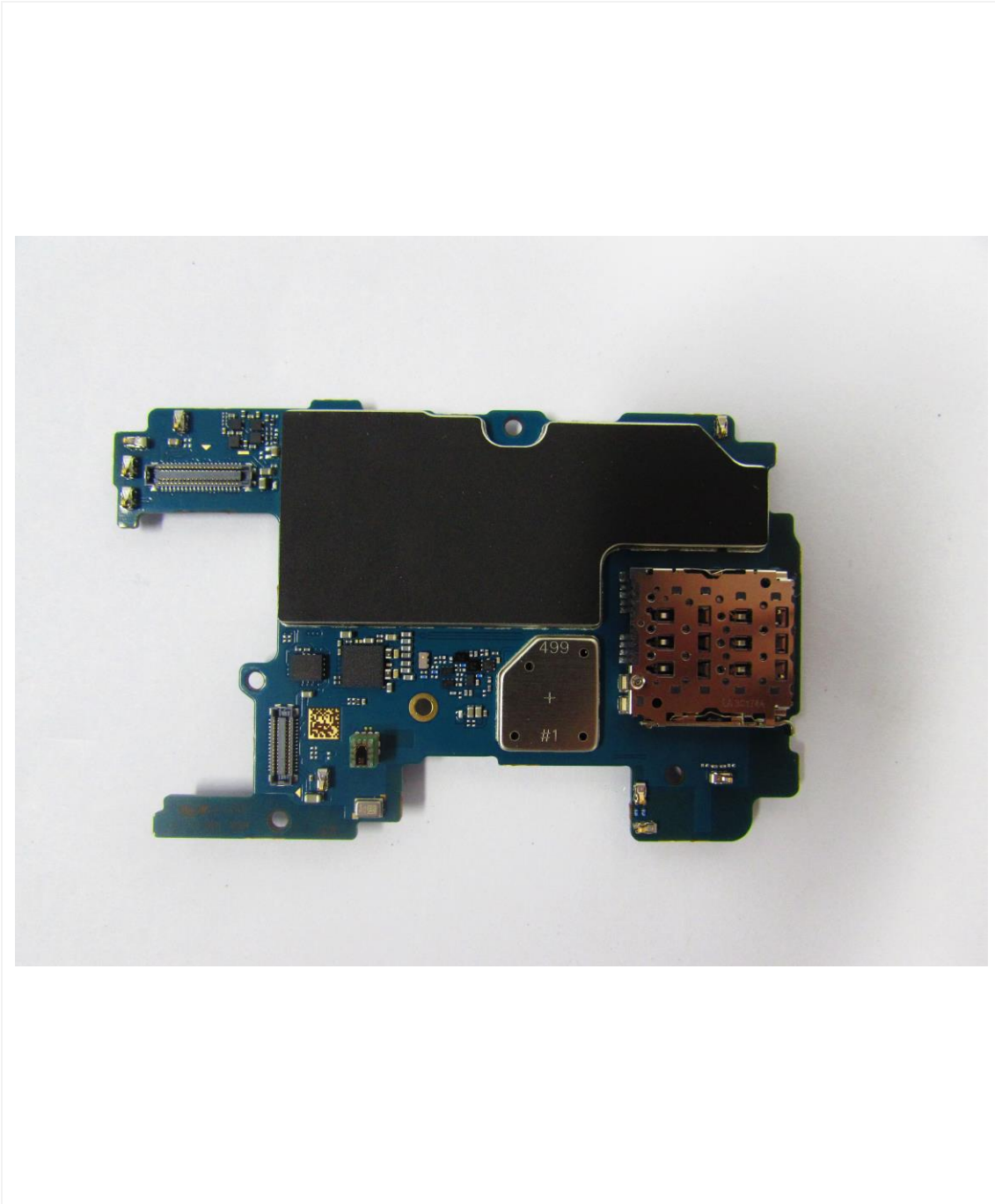
8. Internal Photo



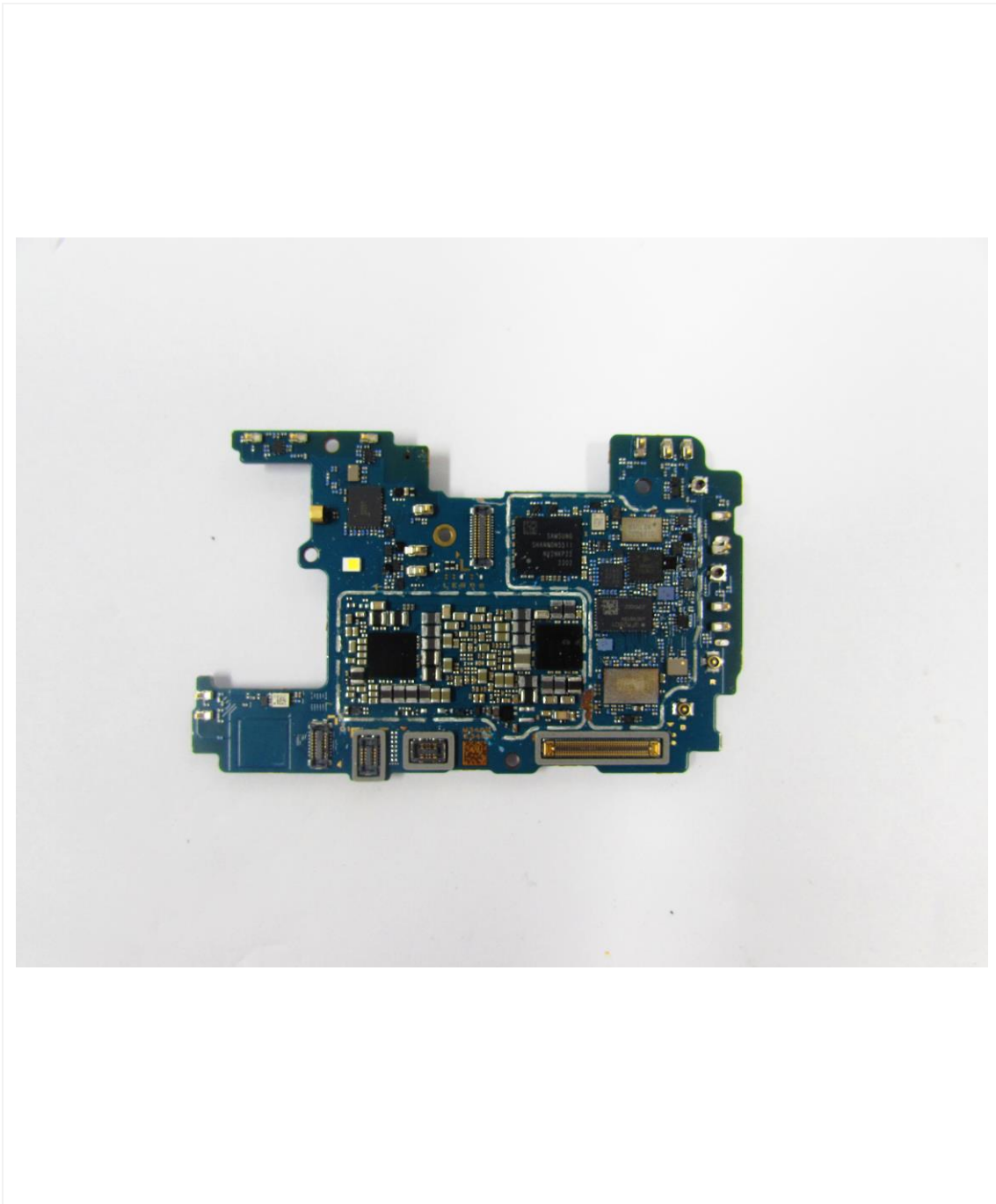
9. Internal Photo



10. Internal Photo



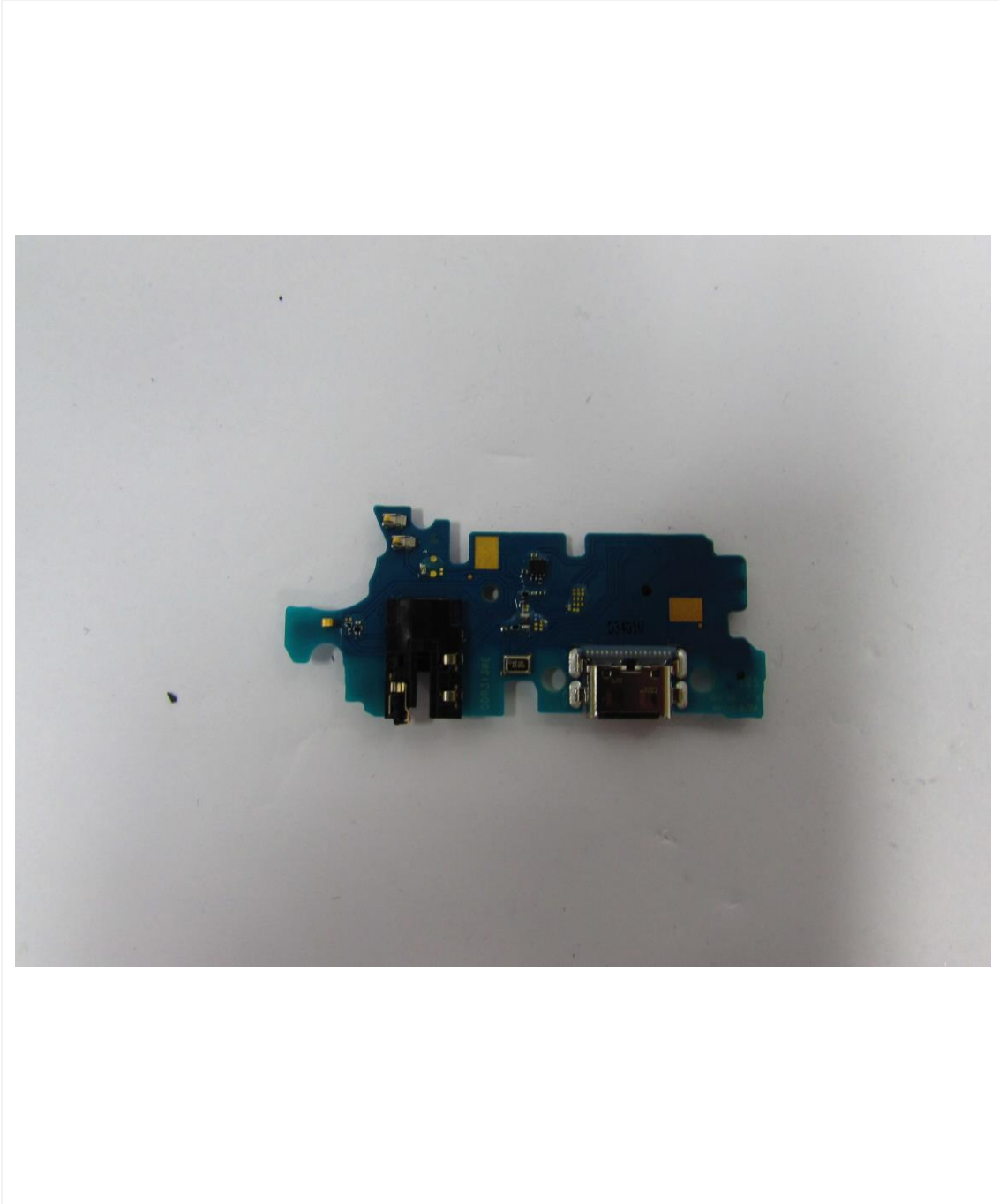
11. Internal Photo



12. Internal Photo



13. Internal Photo



14. Internal Photo

