

SAMSUNG

SM-J400F
SM-J400F/DS

User Manual

Table of Contents

Basics

- 4 Read me first
- 6 Device overheating situations and solutions
- 9 Device layout and functions
- 12 Battery
- 16 SIM or USIM card
- 20 Memory card (microSD card)
- 22 Turning the device on and off
- 23 Initial setup
- 25 Samsung account
- 26 Transferring data from your previous device
- 31 Understanding the screen
- 40 Notification panel
- 42 Entering text

Apps and features

- 45 Installing or uninstalling apps
- 47 Bixby
- 54 Phone
- 59 Contacts
- 64 Messages
- 66 Internet
- 68 Email
- 69 Camera
- 79 Gallery
- 86 Multi window
- 91 Samsung Members
- 92 Samsung Notes
- 93 Calendar
- 94 Samsung Health
- 98 Voice Recorder
- 99 My Files
- 99 Clock
- 101 Calculator
- 102 Radio
- 103 Game Launcher
- 106 Sharing content
- 107 Google apps

Settings

- 109 Introduction
- 109 Connections
 - 110 Wi-Fi
 - 112 Bluetooth
 - 114 Data saver
 - 115 Mobile Hotspot and Tethering
 - 116 SIM card manager (dual SIM models)
 - 116 More connection settings
- 118 Sounds and vibration
 - 119 Dolby Atmos (surround sound)
- 119 Notifications
- 120 Display
 - 121 Blue light filter
 - 121 Changing the screen mode or adjusting the display colour
 - 123 Screensaver
- 123 Wallpapers and themes
- 124 Advanced features
 - 125 Dual Messenger
- 126 Device maintenance
- 128 Apps
- 128 Lock screen
- 129 Security
 - 130 Secure Folder
- 135 Cloud and accounts
 - 136 Backup and restore
- 137 Google
- 137 Accessibility
- 138 General management
- 139 Software update
- 140 User manual
- 140 About phone

Appendix

- 141 Troubleshooting

Basics

Read me first

Please read this manual before using the device to ensure safe and proper use.

- Descriptions are based on the device's default settings.
- Some content may differ from your device depending on the region, service provider, model specifications, or device's software.
- Content (high quality content) that requires high CPU and RAM usage will affect the overall performance of the device. Apps related to the content may not work properly depending on the device's specifications and the environment that it is used in.
- Samsung is not liable for performance issues caused by apps supplied by providers other than Samsung.
- Samsung is not liable for performance issues or incompatibilities caused by edited registry settings or modified operating system software. Attempting to customise the operating system may cause the device or apps to work improperly.
- Software, sound sources, wallpapers, images, and other media provided with this device are licensed for limited use. Extracting and using these materials for commercial or other purposes is an infringement of copyright laws. Users are entirely responsible for illegal use of media.
- You may incur additional charges for data services, such as messaging, uploading and downloading, auto-syncing, or using location services depending on your data plan. For large data transfers, it is recommended to use the Wi-Fi feature.
- Default apps that come with the device are subject to updates and may no longer be supported without prior notice. If you have questions about an app provided with the device, contact a Samsung Service Centre. For user-installed apps, contact service providers.
- Modifying the device's operating system or installing softwares from unofficial sources may result in device malfunctions and data corruption or loss. These actions are violations of your Samsung licence agreement and will void your warranty.

- Be careful not to forget your unlock codes for the screen lock, accounts, and other security features. If you forget an unlock code, you will not be able to use the device if you do not reset it. Samsung is not responsible for any data loss or inconvenience caused by forgotten unlock codes.
- Depending on the region, you can view the regulatory information on the device. To view the information, launch the **Settings** app and tap **About phone** → **Regulatory information**.

Instructional icons



Warning: situations that could cause injury to yourself or others



Caution: situations that could cause damage to your device or other equipment



Notice: notes, usage tips, or additional information

Device overheating situations and solutions

When the device heats up while charging the battery

While charging, the device and the charger may become hot. During wireless charging or fast charging, the device may feel hotter to the touch. This does not affect the device's lifespan or performance and is in the device's normal range of operation. If the battery becomes too hot, the charger may stop charging.

Do the following when the device heats up:

- Disconnect the charger from the device and close any running apps. Wait for the device to cool down and then begin charging the device again.
- If the lower part of the device overheats, it could be because the connected USB cable is damaged. Replace the damaged USB cable with a new Samsung-approved one.
- When using a wireless charger, do not place foreign materials, such as metal objects, magnets, and magnetic stripe cards, between the device and the wireless charger.



The wireless charging or fast charging feature is only available on supported models.

When the device heats up during use

When you use features or apps that require more power or use them for extended periods, your device may temporarily heat up due to increased battery consumption. Close any running apps and do not use the device for a while.

The following are examples of situations in which the device may overheat. Depending on the functions and apps you use, these examples may not apply to your model.

- During the initial setup after purchase or when restoring data
- When downloading large files
- When using apps that require more power or using apps for extended periods
 - When playing high-quality games for extended periods
 - When recording videos for extended periods
 - When streaming videos while using the maximum brightness setting
 - When connecting to a TV
- While multitasking (or, when running many apps in the background)
 - When using Multi window
 - When updating or installing apps while recording videos
 - When downloading large files during a video call
 - When recording videos while using a navigation app
- When using large amount of data for syncing with the cloud, email, or other accounts
- When using a navigation app in a car while the device is placed in direct sunlight
- When using the mobile hotspot and tethering feature
- When using the device in areas with weak signals or no reception
- When charging the battery with a damaged USB cable
- When the device's multipurpose jack is damaged or exposed to foreign materials, such as liquid, dust, metal powder, and pencil lead
- When you are roaming

Do the following when the device heats up:

- Keep the device updated with the latest software.
- Conflicts between running apps may cause the device to heat up. Restart the device.
- Deactivate the Wi-Fi, GPS, and Bluetooth features when not using them.
- Close apps that increase battery consumption or that run in the background when not in use.
- Delete unnecessary files or unused apps.
- Decrease the screen brightness.
- If the device overheats or feels hot for a prolonged period, do not use it for a while. If the device continues to overheat, contact a Samsung Service Centre.

Device limitations when the device overheats

When the device heats up, the features and performance may be limited or the device may turn off to cool down. The feature is only available on supported models.

- If the device becomes hotter than usual, a device overheating message will appear. To lower the device's temperature, the screen brightness and the performance speed will be limited and battery charging will stop. Running apps will be closed and you will only be able to make emergency calls until the device cools down.
- If the device overheats or feels hot for a prolonged period, a power off message will appear. Turn off the device, and wait until it cools down.

Precautions for operating environment

Your device may heat up due to the environment in the following conditions. Use caution to avoid shortening the battery's lifespan, damaging the device, or causing a fire.

- Do not store your device in very cold or very hot temperatures.
- Do not expose your device to direct sunlight for extended periods.
- Do not use or store your device for extended periods in very hot areas, such as inside a car in the summertime.
- Do not place the device in any areas that may overheat, such as on an electric heating mat.
- Do not store your device near or in heaters, microwaves, hot cooking equipment, or high pressure containers.
- Never use a damaged charger or battery.

Device layout and functions

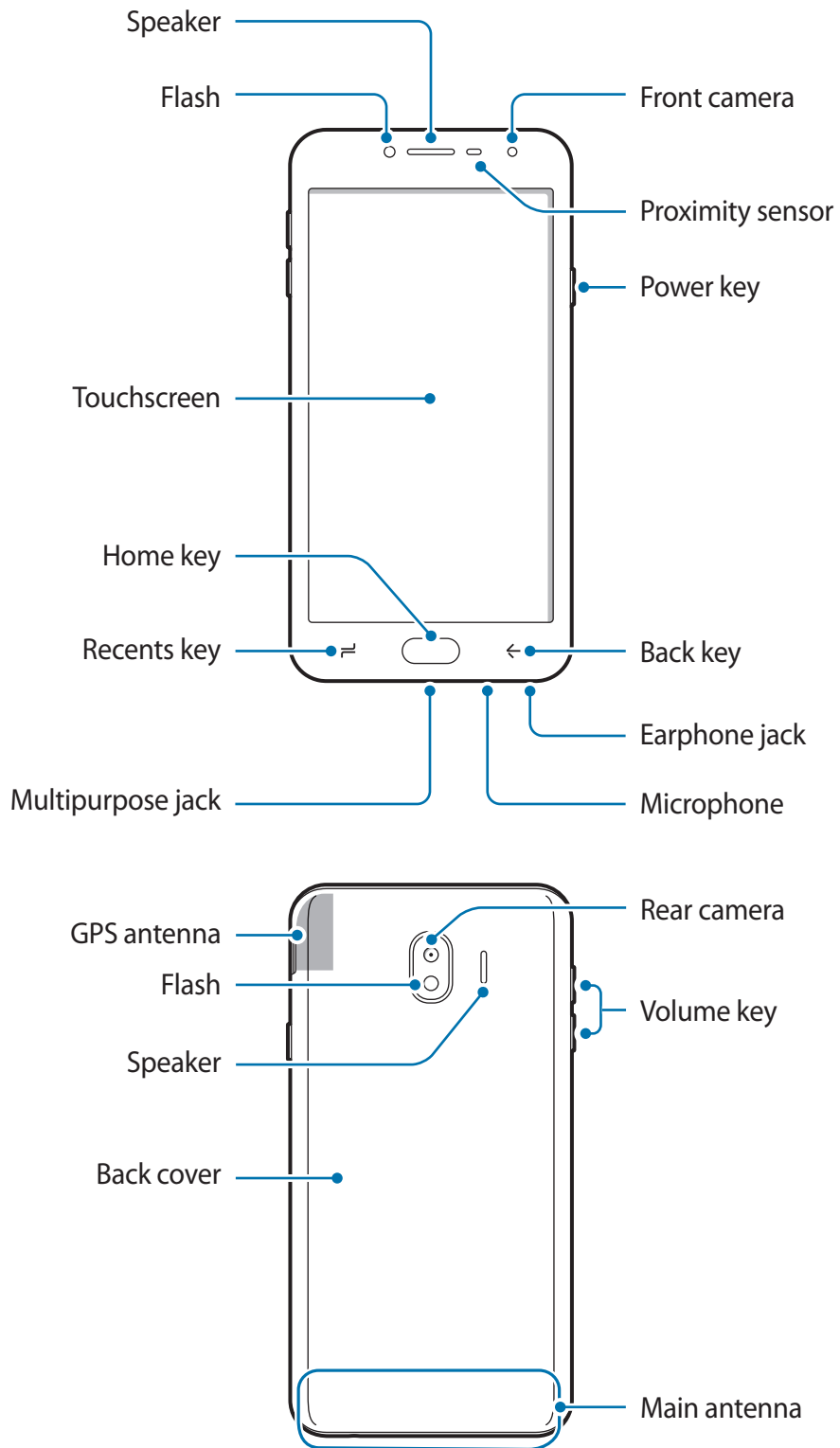
Package contents

Refer to the quick start guide for package contents.



- The items supplied with the device and any available accessories may vary depending on the region or service provider.
- The supplied items are designed only for this device and may not be compatible with other devices.
- Appearances and specifications are subject to change without prior notice.
- You can purchase additional accessories from your local Samsung retailer. Make sure they are compatible with the device before purchase.
- Use only Samsung-approved accessories. Using unapproved accessories may cause the performance problems and malfunctions that are not covered by the warranty.
- Availability of all accessories is subject to change depending entirely on manufacturing companies. For more information about available accessories, refer to the Samsung website.


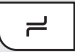

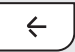

Device layout





- Connectivity problems and battery drain may occur in the following situations:
 - If you attach metallic stickers on the antenna area of the device
 - If you attach a device cover made with metallic material to the device
 - If you cover the device's antenna area with your hands or other objects while using certain features, such as calls or the mobile data connection
- Using a Samsung-approved screen protector is recommended. Unapproved screen protectors may cause the sensors to malfunction.
- Do not cover the proximity sensor area with screen accessories, such as a screen protector or stickers. Doing so may cause the sensor to malfunction.
- Do not allow water to contact the touchscreen. The touchscreen may malfunction in humid conditions or when exposed to water.

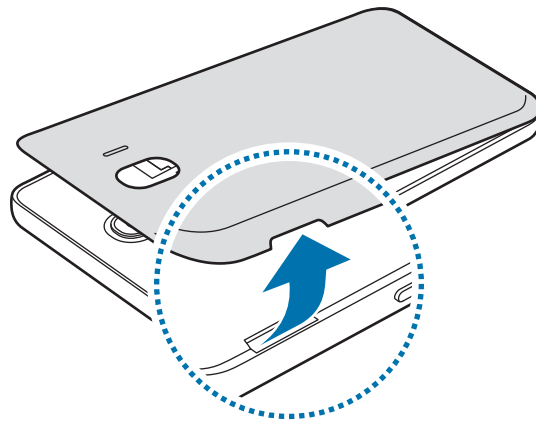
Keys

Key	Function
 Power	<ul style="list-style-type: none"> • Press and hold to turn the device on or off. • Press to turn on or lock the screen.
 Recents	<ul style="list-style-type: none"> • Tap to open the list of recent apps.
 Home	<ul style="list-style-type: none"> • Press to turn on the screen while the screen is locked. • Press to return to the Home screen. • Press and hold to launch Google.
 Back	<ul style="list-style-type: none"> • Tap to return to the previous screen. • Tap and hold to access additional options for the current screen.
 Volume	<ul style="list-style-type: none"> • Press to adjust the device volume.


Battery

Installing the battery

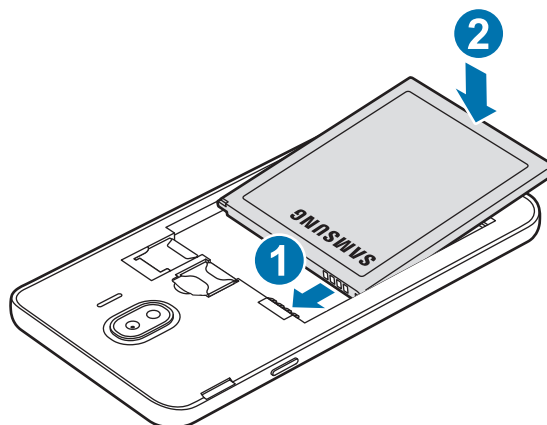
1 Remove the back cover.



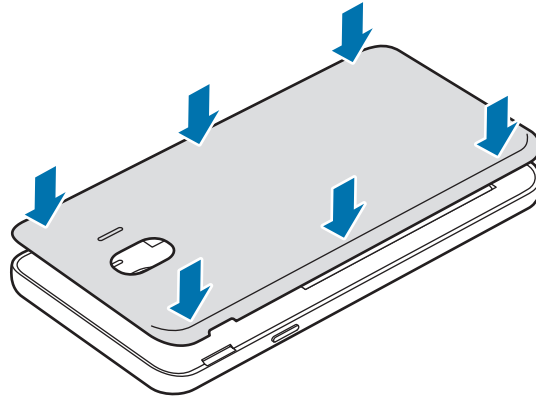
 Be careful not to damage your fingernails when you remove the back cover.

 Do not bend or twist the back cover excessively. Doing so may damage the cover.

2 Insert the battery with the battery's gold-coloured contacts properly aligned with the device's contacts.

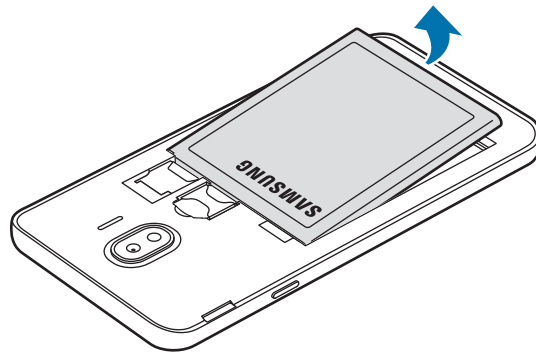


- 3 Replace the back cover.



Removing the battery

- 1 Remove the back cover.
- 2 Pull out the battery.



Charging the battery

Charge the battery before using it for the first time or when it has been unused for extended periods.



Use only Samsung-approved chargers, batteries, and cables. Unapproved chargers or cables can cause the battery to explode or damage the device.

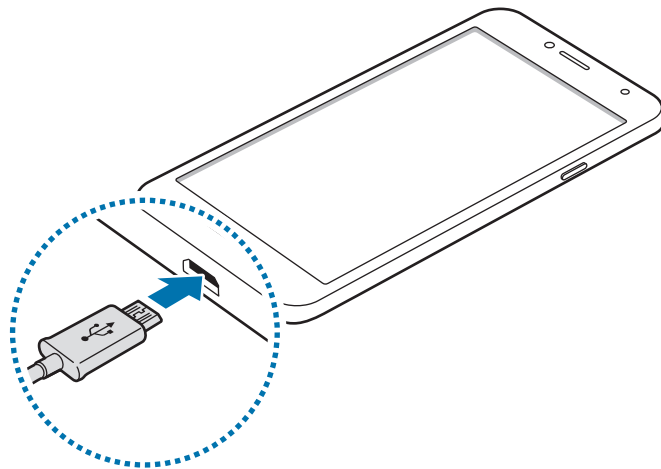


Connecting the charger improperly may cause serious damage to the device. Any damage caused by misuse is not covered by the warranty.



To save energy, unplug the charger when not in use. The charger does not have a power switch, so you must unplug the charger from the electric socket when not in use to avoid wasting power. The charger should remain close to the electric socket and easily accessible while charging.

- 1 Connect the USB cable to the USB power adaptor.
- 2 Plug the USB cable into the device's multipurpose jack.



- 3 Plug the USB power adaptor into an electric socket.
- 4 After fully charging, disconnect the charger from the device. Then, unplug the charger from the electric socket.



Do not remove the battery before removing the charger. This may damage the device.

Reducing the battery consumption

Your device provides various options that help you conserve battery power.

- Optimise the device using the device maintenance feature.
- When you are not using the device, turn off the screen by pressing the Power key.
- Activate power saving mode.
- Close unnecessary apps.
- Deactivate the Bluetooth feature when not in use.
- Deactivate the Wi-Fi feature when not in use.
- Deactivate auto-syncing of apps that need to be synced, such as emails.
- Decrease the backlight time.
- Decrease the screen brightness.

Battery charging tips and precautions

- When the battery power is low, the battery icon appears empty.
- If the battery is completely discharged, the device cannot be turned on immediately when the charger is connected. Allow a depleted battery to charge for a few minutes before turning on the device.
- If you use multiple apps at once, network apps, or apps that need a connection to another device, the battery will drain quickly. To avoid losing power during a data transfer, always use these apps after fully charging the battery.
- Using a power source other than the charger, such as a computer, may result in a slower charging speed due to a lower electric current.
- The device can be used while it is charging, but it may take longer to fully charge the battery.
- If the device receives an unstable power supply while charging, the touchscreen may not function. If this happens, unplug the charger from the device.
- While charging, the device and the charger may heat up. This is normal and should not affect the device's lifespan or performance. If the battery gets hotter than usual, the charger may stop charging.
- If you charge the device while the multipurpose jack is wet, the device may be damaged. Thoroughly dry the multipurpose jack before charging the device.
- If the device is not charging properly, take the device and the charger to a Samsung Service Centre.

SIM or USIM card

Installing the SIM or USIM card

Insert the SIM or USIM card provided by the mobile telephone service provider.

For dual SIM models, you can insert two SIM or USIM cards so you can have two phone numbers or service providers for a single device. In some areas, data transfer speeds may be slower if two SIM cards are inserted in the device than when one SIM card is inserted.

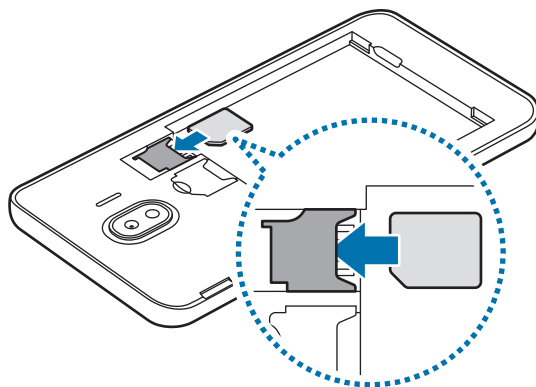


- Use only a microSIM card.
- Use caution not to lose or let others use the SIM or USIM card. Samsung is not responsible for any damages or inconveniences caused by lost or stolen cards.



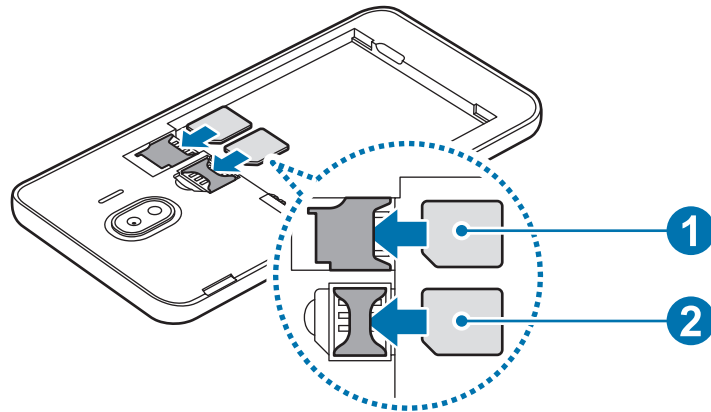
Some LTE services may not be available depending on the service provider. For more information about service availability, contact your service provider.

- 1 Remove the back cover and battery.
- 2 ► **Single SIM models:** Insert the SIM or USIM card with the gold-coloured contacts facing downwards.



► **Dual SIM models:** Insert the SIM or USIM card with the gold-coloured contacts facing downwards.

Insert the primary SIM or USIM card into SIM card slot 1 (1) and the secondary SIM or USIM card into SIM card slot 2 (2).



Do not insert a memory card into the SIM card slot. If a memory card happens to be lodged in the SIM card slot, take the device to a Samsung Service Centre to remove the memory card.

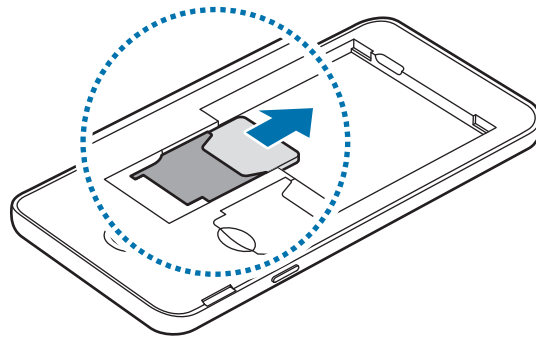
3 Replace the battery and back cover.

Removing the SIM or USIM card

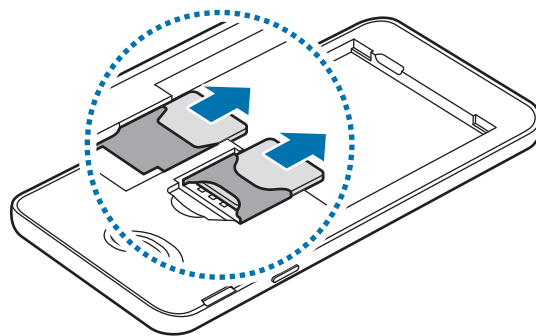
1 Remove the back cover and battery.

2 Pull out the SIM or USIM card.

▶ **Single SIM models:**



▶ **Dual SIM models:**



Using dual SIM or USIM cards (dual SIM models)

If you insert two SIM or USIM cards, you can have two phone numbers or service providers for a single device.

Activating SIM or USIM cards

Launch the **Settings** app and tap **Connections** → **SIM card manager**. Select a SIM or USIM card and tap the switch to activate it.

Customising SIM or USIM cards

Launch the **Settings** app, tap **Connections** → **SIM card manager**, and then select a SIM or USIM card to access the following options:

- **Icon:** Change the icon of the SIM or USIM card.
- **Name:** Change the display name of the SIM or USIM card.
- **Network mode:** Select a network type to use with the SIM or USIM card.

Setting preferred SIM or USIM cards

When two cards are activated, you can assign voice calls, messaging, and data services to specific cards.

Launch the **Settings** app, tap **Connections** → **SIM card manager**, and then set the feature preferences for your cards in **PREFERRED SIM CARD**.

Memory card (microSD card)

Installing a memory card

Your device's memory card capacity may vary from other models and some memory cards may not be compatible with your device depending on the memory card manufacturer and type. To view your device's maximum memory card capacity, refer to the Samsung website.

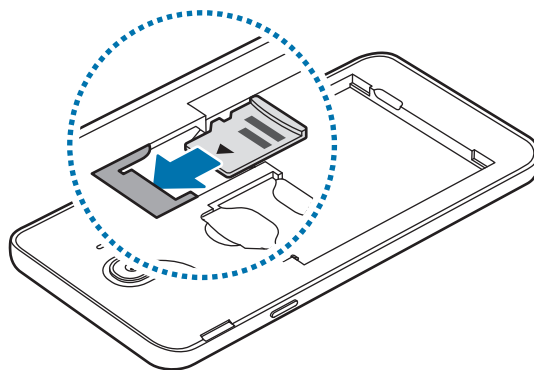


- Some memory cards may not be fully compatible with the device. Using an incompatible card may damage the device or the memory card, or corrupt the data stored in it.
- Use caution to insert the memory card right-side up.



- The device supports the FAT and the exFAT file systems for memory cards. When inserting a card formatted in a different file system, the device will ask to reformat the card or will not recognise the card. To use the memory card, you must format it. If your device cannot format or recognise the memory card, contact the memory card manufacturer or a Samsung Service Centre.
- Frequent writing and erasing of data shortens the lifespan of memory cards.
- When inserting a memory card into the device, the memory card's file directory appears in the **My Files** → **SD card** folder.

- 1 Remove the back cover and battery.
- 2 Insert a memory card with the gold-coloured contacts facing downwards.



- 3 Replace the battery and back cover.

Removing the memory card

Before removing the memory card, first unmount it for safe removal.

Launch the **Settings** app and tap **Device maintenance** → **Storage** →  → **Storage settings** → **SD card** → **UNMOUNT**.

- 1 Remove the back cover and battery.
- 2 Pull out the memory card.
- 3 Replace the battery and back cover.



Do not remove external storage, such as a memory card or USB storage, while the device is transferring or accessing information, or right after transferring data. Doing so can cause data to be corrupted or lost or cause damage to the external storage or device. Samsung is not responsible for losses, including loss of data, resulting from the misuse of external storage devices.

Formatting the memory card

A memory card formatted on a computer may not be compatible with the device. Format the memory card on the device.

Launch the **Settings** app and tap **Device maintenance** → **Storage** →  → **Storage settings** → **SD card** → **Format** → **FORMAT**.



Before formatting the memory card, remember to make backup copies of all important data stored in the memory card. The manufacturer's warranty does not cover loss of data resulting from user actions.

Turning the device on and off

Press and hold the Power key for a few seconds to turn on the device.

When you turn on your device for the first time or after performing a data reset, follow the on-screen instructions to set up your device.

To turn off the device, press and hold the Power key, and then tap **Power off**.



- If your device is frozen and unresponsive, press and hold the Power key and the Volume Down key simultaneously for more than 7 seconds to restart it.
- Follow all posted warnings and directions from authorised personnel in areas where the use of wireless devices is restricted, such as aeroplanes and hospitals.

Emergency mode

You can switch the device to emergency mode to reduce battery consumption. Some apps and functions will be restricted. In emergency mode, you can make an emergency call, send your current location information to others, sound an emergency alarm, and more.

Activating emergency mode

To activate emergency mode, press and hold the Power key, and then tap **Emergency mode**.




The usage time left shows the time remaining before the battery power runs out. Usage time left may vary depending on your device settings and operating conditions.


Deactivating emergency mode

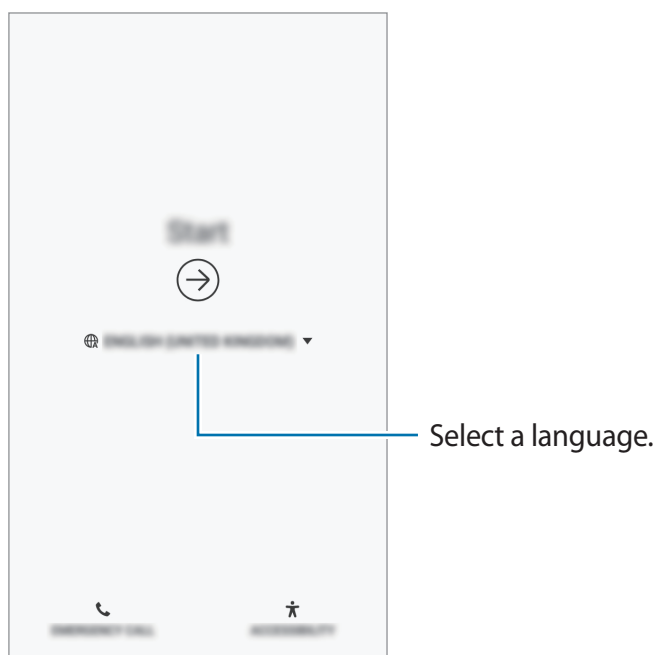
To deactivate emergency mode, tap **☰** → **Turn off Emergency mode**. Alternatively, press and hold the Power key, and then tap **Emergency mode**.

Initial setup


When you turn on your device for the first time or after performing a data reset, follow the on-screen instructions to set up your device.

 The initial setup procedures may vary depending on the device's software and your region.

- 1 Turn on the device.
- 2 Select your preferred device language and select .

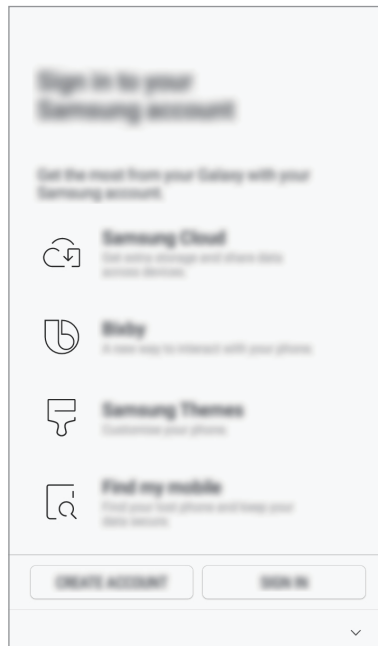


- 3 Select a Wi-Fi network and connect to it.

 If you do not connect to a Wi-Fi network, you may not be able to set up some device features during the initial setup.

- 4 Follow the on-screen instructions to proceed the initial setup.
- 5 Set a screen lock method to protect your device. You can protect your personal information by preventing others from accessing your device. To set the screen lock method later, tap **Not now**.

- 6 Sign in to your Samsung account. You can enjoy Samsung services and keep your data up to date and secure across all of your devices. Refer to [Samsung account](#) for more information.




- 7 Select features you want to use and complete the initial setup. The Home screen will appear.

Samsung account

Introduction

Your Samsung account is an integrated account service that allows you to use a variety of Samsung services provided by mobile devices, TVs, and the Samsung website. Once your Samsung account has been registered, you can keep your data up to date and secure across your Samsung devices with Samsung Cloud, track and control your lost or stolen device, see tips and tricks from Samsung Members, and more.

Create your Samsung account with your email address.

To check the list of services that can be used with your Samsung account, visit account.samsung.com. For more information on Samsung accounts, launch the **Settings** app and tap **Cloud and accounts** → **Accounts** → **Samsung account** →  → **Help**.

Registering your Samsung account

Registering a new Samsung account

If you do not have a Samsung account, you should create one.

- 1 Launch the **Settings** app and tap **Cloud and accounts** → **Accounts** → **Add account**.
- 2 Tap **Samsung account** → **CREATE ACCOUNT**.
- 3 Follow the on-screen instructions to complete creating your account.


Registering an existing Samsung account

If you already have a Samsung account, register it to the device.

- 1 Launch the **Settings** app and tap **Cloud and accounts** → **Accounts** → **Add account**.
- 2 Tap **Samsung account** → **SIGN IN**.
- 3 Enter your email address and password, and then tap **SIGN IN**.
If you forget your account information, tap **Find ID** or **Reset password**. You can find your account information when you enter the required information.
- 4 Tap **DONE** to finish registering your Samsung account.

Removing your Samsung account

When you remove your registered Samsung account from the device, your data, such as contacts or events, will also be removed.

- 1 Launch the **Settings** app and tap **Cloud and accounts** → **Accounts**.
- 2 Tap **Samsung account** →  → **Remove account**.
- 3 Tap **REMOVE**, enter your Samsung account password, and then tap **REMOVE ACCOUNT**.

Transferring data from your previous device

You can transfer content, such as images, contacts, and messages, from your previous device via Smart Switch or from a backup of your data via Samsung Cloud.



- This feature may not be supported on some devices or computers.
- Limitations apply. Visit www.samsung.com/smartswitch for details. Samsung takes copyright seriously. Only transfer content that you own or have the right to transfer.

Smart Switch

Transfer data between mobile devices via Smart Switch. To use Smart Switch, launch the **Settings** app and tap **Cloud and accounts** → **Smart Switch**. If you do not have the app, download it from **Galaxy Apps** or **Play Store**.

Transferring data from a mobile device

Transfer data from your previous device to your device wirelessly via Wi-Fi Direct.



- 1 On the previous device, launch Smart Switch.
If you do not have the app, download it from **Galaxy Apps** or **Play Store**.
- 2 On your device, launch the **Settings** app and tap **Cloud and accounts** → **Smart Switch**.
- 3 Place the devices near each other.
- 4 On the previous device, tap **WIRELESS** → **SEND** → **CONNECT**.
- 5 On your device, tap **WIRELESS** → **RECEIVE** and select the previous device type.
- 6 Follow the on-screen instructions to transfer data from your previous device.

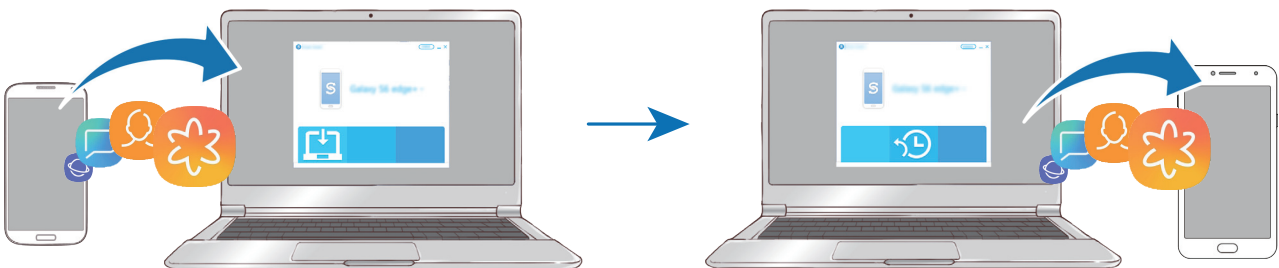
Transferring data using external storage


Transfer data using external storage, such as a microSD card.

- 1 Transfer data from your previous device to external storage.
- 2 Insert or connect the external storage device to your device.
- 3 On your device, launch the **Settings** app and tap **Cloud and accounts** → **Smart Switch** → **EXTERNAL STORAGE** → **RESTORE**.
- 4 Follow the on-screen instructions to transfer data from external storage.

Transferring backup data from a computer

Transfer data between your device and a computer. You must download the Smart Switch computer version app from www.samsung.com/smartswitch. Back up data from your previous device to a computer and import the data to your device.



- 1 On the computer, visit www.samsung.com/smartswitch to download Smart Switch.
- 2 On the computer, launch Smart Switch.
-  If your previous device is not a Samsung device, back up data to a computer using a program provided by the device's manufacturer. Then, skip to the fifth step.
- 3 Connect your previous device to the computer using the device's USB cable.
- 4 On the computer, follow the on-screen instructions to back up data from the device. Then, disconnect your previous device from the computer.
- 5 Connect your device to the computer using the USB cable.
- 6 On the computer, follow the on-screen instructions to transfer data to your device.

Viewing imported data

You can view the imported data on the same app from your previous device.

If your new device does not have the same apps to view or play the imported data, the data will be saved to a similar app. For example, if you import memos and your device does not have the Memo app, you can view the memos in the **Samsung Notes** app.

Samsung Cloud

Back up data from your previous device to Samsung Cloud and restore the data to your new device. You must register and sign in to your Samsung account to use Samsung Cloud. Refer to [Samsung account](#) for more information.

Backing up data

1 On your previous device, sign in to your Samsung account.

2 Launch the **Settings** app, select the backup option, and back up your data.



- If your device supports Samsung Cloud, launch the **Settings** app, tap **Cloud and accounts** → **Samsung Cloud**, select your device under **BACKUP AND RESTORE**, tap **Back up**, and then back up your data.
- The data backup method may vary depending on your model.
- Some data will not be backed up. To check which data will be backed up, launch the **Settings** app, tap **Cloud and accounts** → **Samsung Cloud**, select your device under **BACKUP AND RESTORE**, and then tap **Back up**.

Restoring data


1 On your new device, launch the **Settings** app and tap **Cloud and accounts** → **Samsung Cloud**.

2 Select your previous device under **BACKUP AND RESTORE** and tap **Restore data**.

3 Tick the data types you want to restore and tap **RESTORE**.

Syncing data

You can sync data saved in your device with Samsung Cloud and access it from other devices.

- 1 On your new device, launch the **Settings** app and tap **Cloud and accounts** → **Samsung Cloud**.
- 2 Tap  → **Settings** → **Sync settings**.
- 3 Tap the switches next to the items you want to sync with.

Checking data

You can check the saved items and used memory of your Samsung Cloud. Launch the **Settings** app and tap **Cloud and accounts** → **Samsung Cloud**.

- You can immediately check your used memory and saved items, such as, **GALLERY**, **SAMSUNG NOTES**, and **SAMSUNG CLOUD DRIVE**. Tap each card and enter the next page. You can change the settings or check the saved data.
- You can check the backup data in your Samsung account by using the **BACKUP AND RESTORE** option. Select your device and tap **Restore data**.

Understanding the screen

Controlling the touchscreen



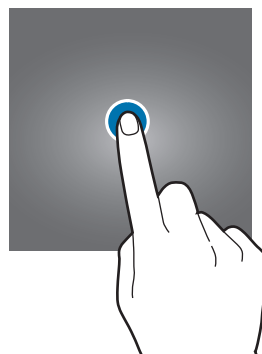
- Do not allow the touchscreen to come into contact with other electrical devices. Electrostatic discharges can cause the touchscreen to malfunction.
- To avoid damaging the touchscreen, do not tap it with anything sharp or apply excessive pressure to it with your fingertips.
- Leaving the touchscreen idle for extended periods may result in afterimages (screen burn-in) or ghosting. Turn off the touchscreen when you do not use the device.



- The device may not recognise touch inputs close to the edges of the screen, which are outside of the touch input area.
- It is recommended to use fingers when you use the touchscreen.

Tapping

Tap the screen.



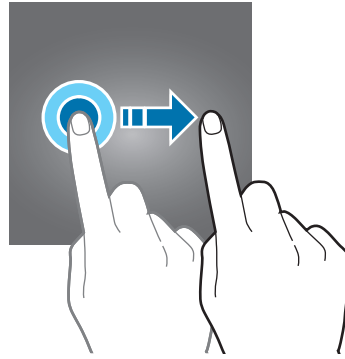
Tapping and holding

Tap and hold the screen for approximately 2 seconds.



Dragging

Tap and hold an item and drag it to the target position.



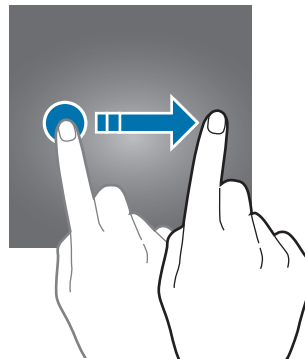
Double-tapping

Double-tap the screen.



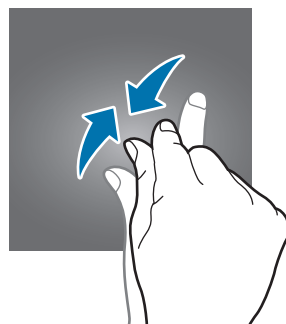
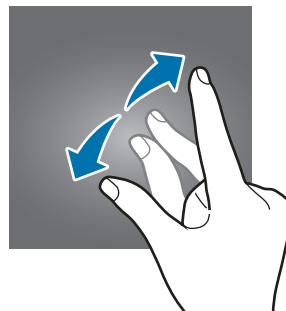
Swiping

Swipe upwards, downwards, to the left, or to the right.



Spreading and pinching

Spread two fingers apart or pinch on the screen.



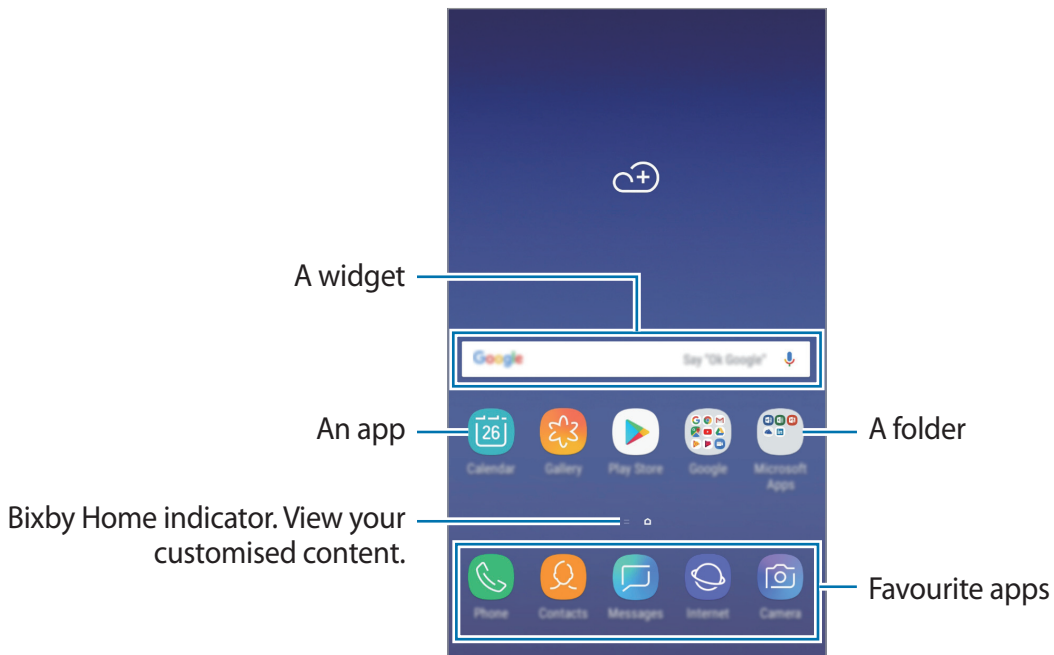
Home screen and Apps screen

The Home screen is the starting point for accessing all of the device's features. It displays widgets, shortcuts to apps, and more.

The Apps screen displays icons for all apps, including newly installed apps.



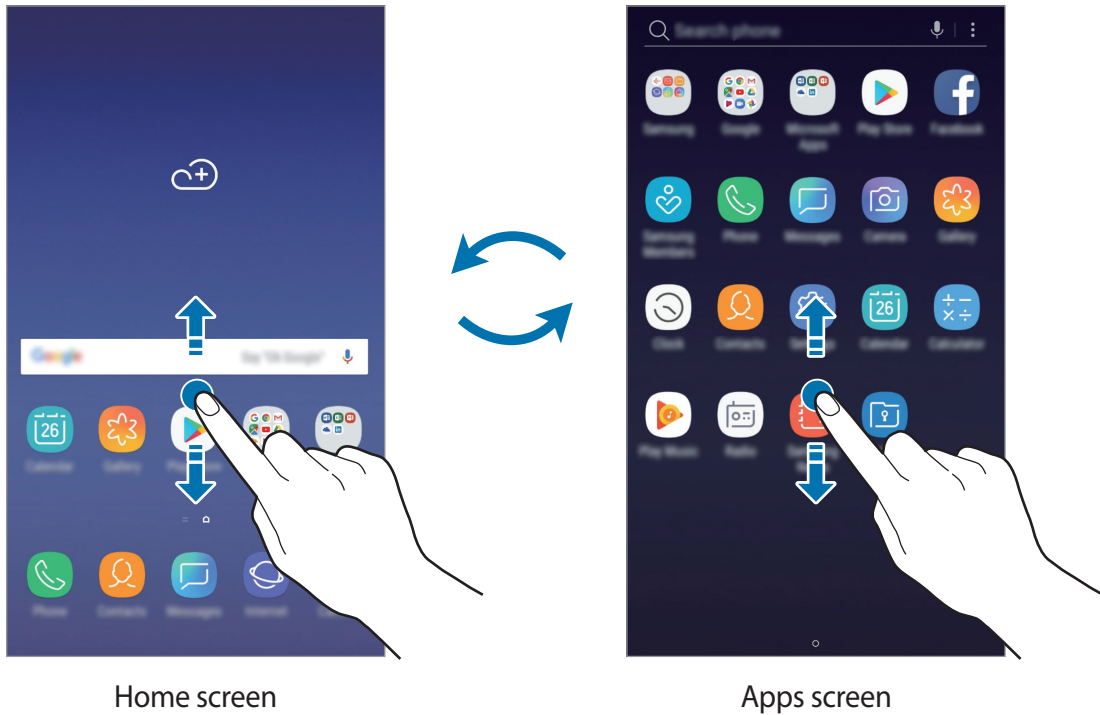
The screen may appear differently depending on the region or service provider.



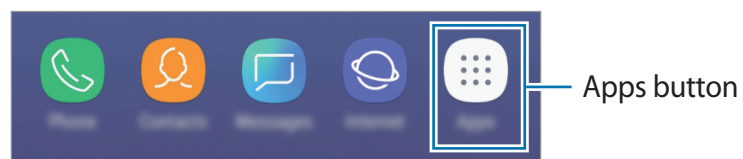
Switching between Home and Apps screens

On the Home screen, swipe upwards or downwards to open the Apps screen. To return to the Home screen, swipe upwards or downwards on the Apps screen.

Alternatively, press the Home key or tap the Back key.



If you add the Apps button on the Home screen, you can open the Apps screen by tapping the button. On the Home screen, tap and hold an empty area and tap **Home screen settings** → **Apps button** → **Show Apps button** → **APPLY**. The Apps button will be added at the bottom of the Home screen.



Moving items

Tap and hold an item, and then drag it to a new location. To move the item to another panel, drag it to the side of the screen.

To add a shortcut to an app on the Home screen, tap and hold an item on the Apps screen, and then drag it to the top or bottom of the screen. A shortcut to the app will be added on the Home screen.

You can also move frequently used apps to the shortcuts area at the bottom of the Home screen.

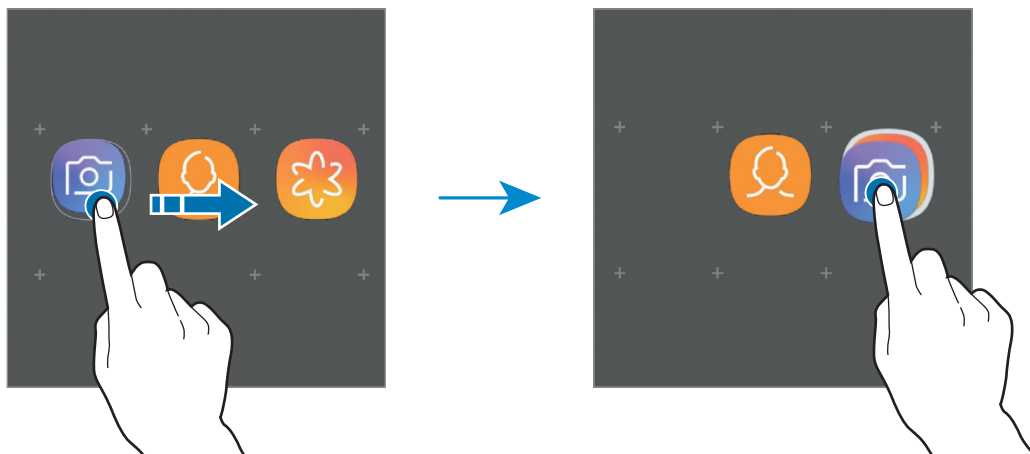
Creating folders

Create folders and gather similar applications to quickly access and launch apps.

1 On the Home screen or the Apps screen, tap and hold an app, and then drag it over another app.

2 Drop the app when a folder frame appears around the apps.

A new folder containing the selected apps will be created. Tap **Enter folder name** and enter a folder name.



- **Adding more apps**

Tap **ADD APPS** on the folder. Tick the apps to add and tap **ADD**. You can also add an app by dragging it to the folder.

- **Moving apps from a folder**


Tap and hold an app to drag it to a new location.

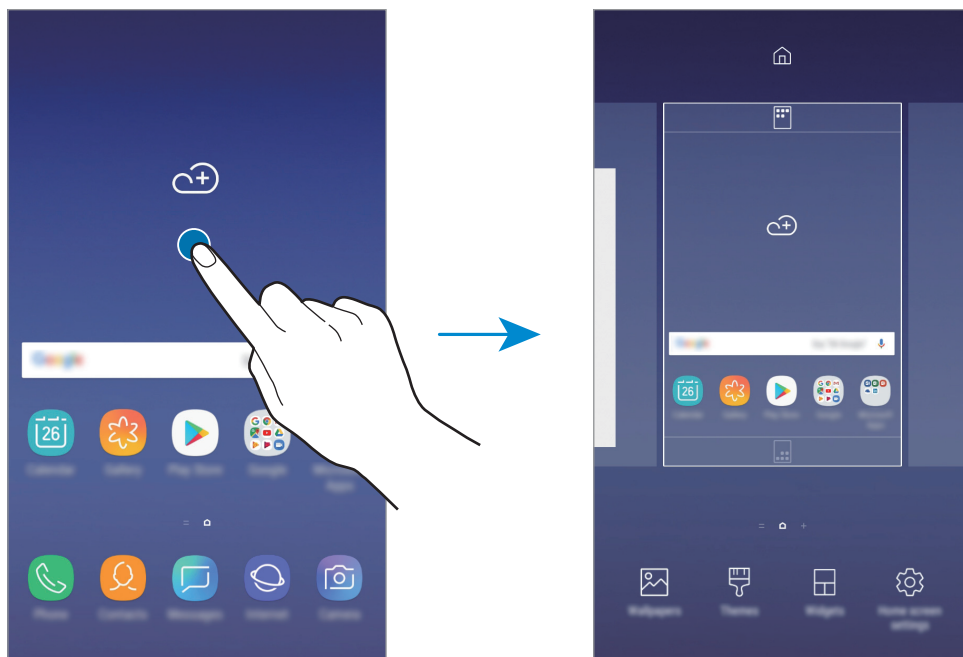
- **Deleting a folder**

Tap and hold a folder, and then tap **Delete folder**. Only the folder will be deleted. The folder's apps will be relocated to the Apps screen.

Editing the Home screen

On the Home screen, tap and hold an empty area, or pinch your fingers together to access the editing options. You can set the wallpaper, add widgets, and more. You can also add, delete, or rearrange Home screen panels.

- Adding panels: Swipe to the left, and then tap +.
- Moving panels: Tap and hold a panel preview, and then drag it to a new location.
- Deleting panels: Tap  on the panel.



- **Wallpapers:** Change the wallpaper settings for the Home screen and the locked screen.
- **Themes:** Change the device's theme. Visual elements of interface, such as colours, icons, and wallpapers, will change depending on the selected theme.
- **Widgets:** Widgets are small apps that launch specific app functions to provide information and convenient access on your Home screen. Tap and hold a widget, and then drag it to the Home screen. The widget will be added on the Home screen.
- **Home screen settings:** Change the size of the grid to display more or fewer items on the Home screen and more.

Displaying all apps on the Home screen

Without using a separate Apps screen, you can set the device to display all apps on the Home screen. On the Home screen, tap and hold an empty area, and then tap **Home screen settings** → **Home screen layout** → **Home screen only** → **APPLY**.

You can now access all your apps by swiping to the left on the Home screen.

Indicator icons

Indicator icons appear on the status bar at the top of the screen. The icons listed in the table below are most common.



The status bar may not appear at the top of the screen in some apps. To display the status bar, drag down from the top of the screen.

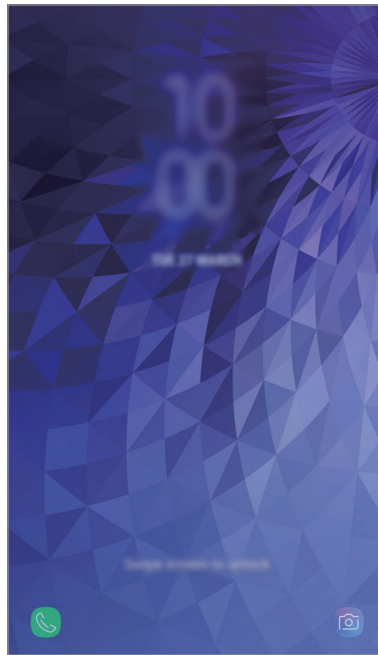
Icon	Meaning
	No signal
	Signal strength
	Roaming (outside of normal service area)
	Preferred SIM or USIM card for calls (dual SIM models)
	GPRS network connected
	EDGE network connected
	UMTS network connected
	HSDPA network connected
	HSPA+ network connected
	LTE network connected
	Wi-Fi connected
	Bluetooth feature activated
	Location services being used
	Call in progress
	Missed call
	New text or multimedia message
	Alarm activated
	Mute mode activated
	Vibration mode activated
	Flight mode activated
	Error occurred or caution required
	Battery charging
	Battery power level

Lock screen

Pressing the Power key turns off the screen and locks it. Also, the screen turns off and automatically locks if the device is not used for a specified period.

To unlock the screen, swipe in any direction when the screen turns on.

If the screen is off, press the Power key or the Home key to turn on the screen.



Locked screen

Changing the screen lock method

To change the screen lock method, launch the **Settings** app, tap **Lock screen** → **Screen lock type**, and then select a method.

When you set a pattern, PIN, or password for the screen lock method, you can protect your personal information by preventing others from accessing your device. After setting the screen lock method, the device will require an unlock code whenever unlocking it.

- **Swipe:** Swipe in any direction on the screen to unlock it.
- **Pattern:** Draw a pattern with four or more dots to unlock the screen.
- **PIN:** Enter a PIN with at least four numbers to unlock the screen.
- **Password:** Enter a password with at least four characters, numbers, or symbols to unlock the screen.
- **None:** Do not set a screen lock method.



You can set your device to perform a factory data reset if you enter the unlock code incorrectly several times in a row and reach the attempt limit. Launch the **Settings** app, tap **Lock screen** → **Secure lock settings**, and then tap the **Auto factory reset** switch to activate it.

Screen capture

Capture a screenshot while using the device.

Press and hold the Home key and the Power key simultaneously. You can view captured images in **Gallery**.

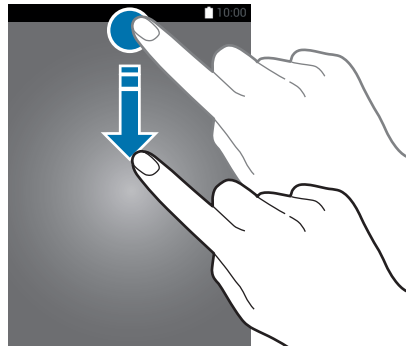


It is not possible to capture a screenshot while using some apps and features.

Notification panel

When you receive new notifications, such as messages or missed calls, indicator icons appear on the status bar. To see more information about the icons, open the notification panel and view the details.

To open the notification panel, drag the status bar downwards. To close the notification panel, swipe upwards on the screen.



You can open the notification panel, even on the locked screen.

You can use the following functions on the notification panel.

Quick setting buttons — Launch **Settings**.

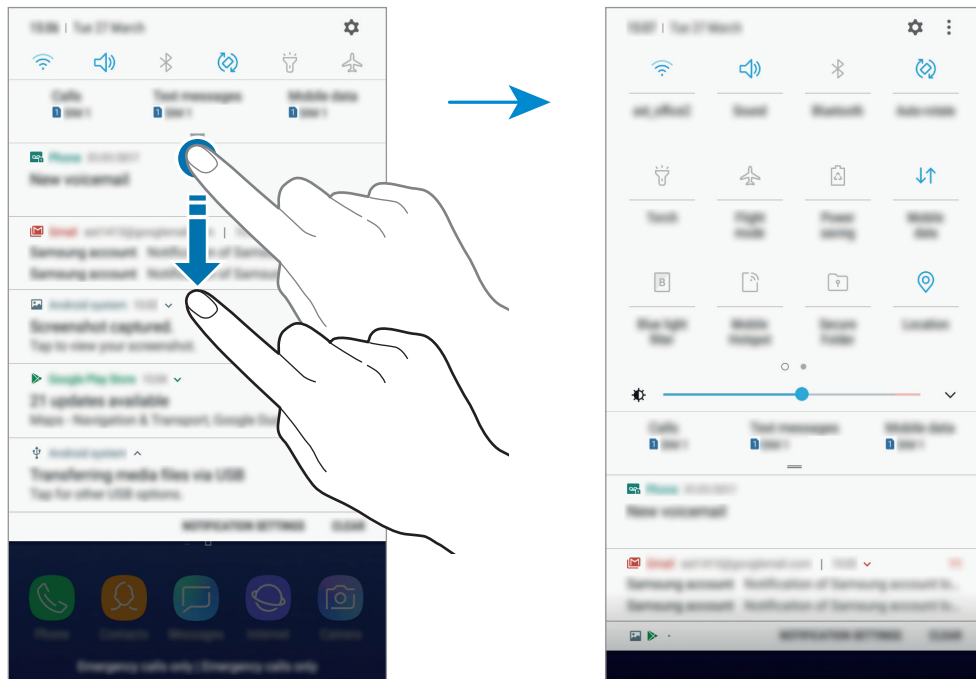
Preferred SIM or USIM card for each option. Tap to access the SIM card manager. (dual SIM models)

View the notification details and perform various actions.


Access the notification settings. — Clear all notifications.

Using quick setting buttons

Tap quick setting buttons to activate certain features. Swipe downwards on the notification panel to view more buttons.



To change feature settings, tap the text under each button. To view more detailed settings, tap and hold a button.

To rearrange buttons, tap  → **Button order**, tap and hold a button, and then drag it to another location.

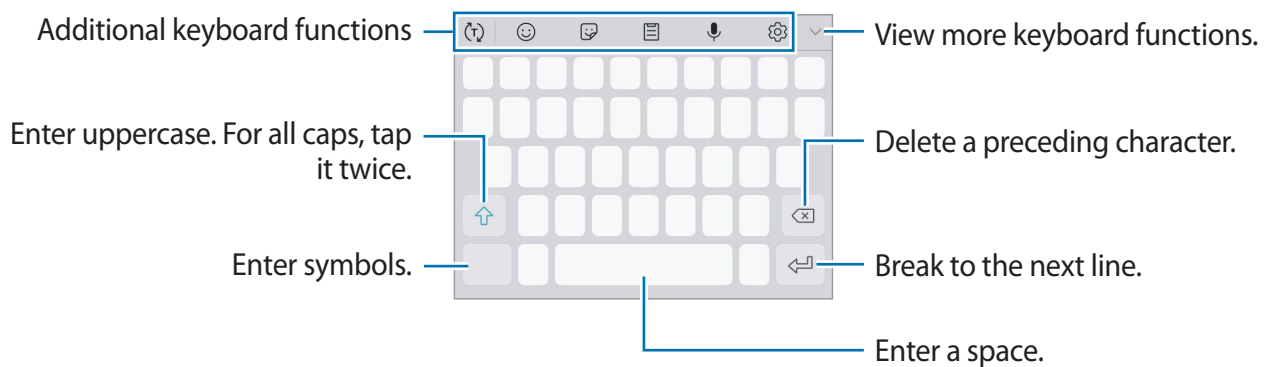
Entering text

Keyboard layout


A keyboard appears automatically when you enter text to send messages, create notes, and more.



- When the keyboard is opened for the first time, the keyboard setup screen will appear. Set the input language, keyboard type, and keyboard settings and then tap **START**.
- Text entry is not supported in some languages. To enter text, you must change the input language to one of the supported languages.



Changing the input language

Tap  → **Languages and types** → **MANAGE INPUT LANGUAGES**, and then select the languages to use. When you select two or more languages, you can switch between the input languages by swiping to the left or right on the space key.

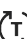








Changing the keyboard layout

Tap  → **Languages and types**, select a language, and then select a keyboard layout to use.





On **3x4 keyboard**, a key has three or four characters. To enter a character, tap the corresponding key repeatedly until the desired character appears.

Additional keyboard functions

- : Predict words based on your input and show word suggestions. To return to the keyboard functions list, tap .
- : Enter emoticons.
- : Enter stickers.
- : Add an item from the clipboard.
- : Enter text by voice.
- : Change the keyboard settings.
-  → : Change the keyboard for one-handed operation.

Copying and pasting

- 1 Tap and hold over text.
- 2 Drag  or  to select the desired text, or tap **Select all** to select all text.
- 3 Tap **Copy** or **Cut**.
The selected text is copied to the clipboard.
- 4 Tap and hold where the text is to be inserted and tap **Paste**.
To paste text that you have previously copied, tap **Clipboard** and select the text.


Dictionary

Look up definitions for words while using certain features, such as when browsing webpages.



1 Tap and hold over a word that you want to look up.

If the word you want to look up is not selected, drag  or  to select the desired text.

2 Tap **More** → **Dictionary** on the options list.

If a dictionary is not preinstalled on the device, tap **Move to Manage dictionaries** →  next to a dictionary to download it.

3 View the definition in the dictionary pop-up window.

To switch to the full screen view, tap . Tap the definition on the screen to view more definitions. In the detailed view, tap  to add the word to your favourite words list or tap **Search Web** to use the word as a search term.

Apps and features

Installing or uninstalling apps

Galaxy Apps

Purchase and download apps. You can download apps that are specialised for Samsung Galaxy devices.

Open the **Samsung** folder and launch the **Galaxy Apps** app.




This app may not be available depending on the region or service provider.

Installing apps

Browse apps by category or tap the search field to search for a keyword.

Select an app to view information about it. To download free apps, tap **INSTALL**. To purchase and download apps where charges apply, tap the price and follow the on-screen instructions.



To change the auto update settings, tap  → **Settings** → **Auto update apps**, and then select an option.

Play Store

Purchase and download apps.


Launch the **Play Store** app.

Installing apps

Browse apps by category or search for apps by keyword.

Select an app to view information about it. To download free apps, tap **INSTALL**. To purchase and download apps where charges apply, tap the price and follow the on-screen instructions.



To change the auto update settings, tap  → **Settings** → **Auto-update apps**, and then select an option.

Managing apps

Uninstalling or disabling apps

Tap and hold an app and select an option.

- **Disable:** Disable selected default apps that cannot be uninstalled from the device.
- **Uninstall:** Uninstall downloaded apps.

Enabling apps

Launch the **Settings** app, tap **Apps** → ▼ → **Disabled**, select an app, and then tap **ENABLE**.

Setting app permissions

For some apps to operate properly, they may need permission to access or use information on your device. When you open an app, a pop-up window may appear and request access to certain features or information. Tap **ALLOW** on the pop-up window to grant permissions to the app.

To view your app permission settings, launch the **Settings** app and tap **Apps**. Select an app and tap **Permissions**. You can view the app's permissions list and change its permissions.

To view or change app permission settings by permission category, launch the **Settings** app and tap **Apps** → ⋮ → **App permissions**. Select an item and tap the switches next to apps to grant permissions.



If you do not grant permissions to apps, the basic features of the apps may not function properly.

Bixby

Introduction

Bixby is a new interface that can communicate with you and it provides services that help you to use your smartphone more conveniently.

- **Bixby Home:** You can view recommended services and information that Bixby provides by analysing your usage patterns and your routine.
- **Reminder:** You can create reminders to schedule to-do items or to view content later.



- To use the Bixby feature, your device must be connected to a Wi-Fi or mobile network.
- To use the Bixby feature, you must register and sign in to your Samsung account.

Starting Bixby

When you launch Bixby for the first time, the Bixby intro page will appear. You must register and sign in to your Samsung account according to the on-screen instructions and agree to the terms and conditions.

- 1 Swipe to the right on the Home screen.
- 2 Check the Bixby intro page and tap **NEXT**.
- 3 Tap **SIGN IN** and follow the on-screen instructions to sign in to your Samsung account.



If you are already signed in, this step will not appear.

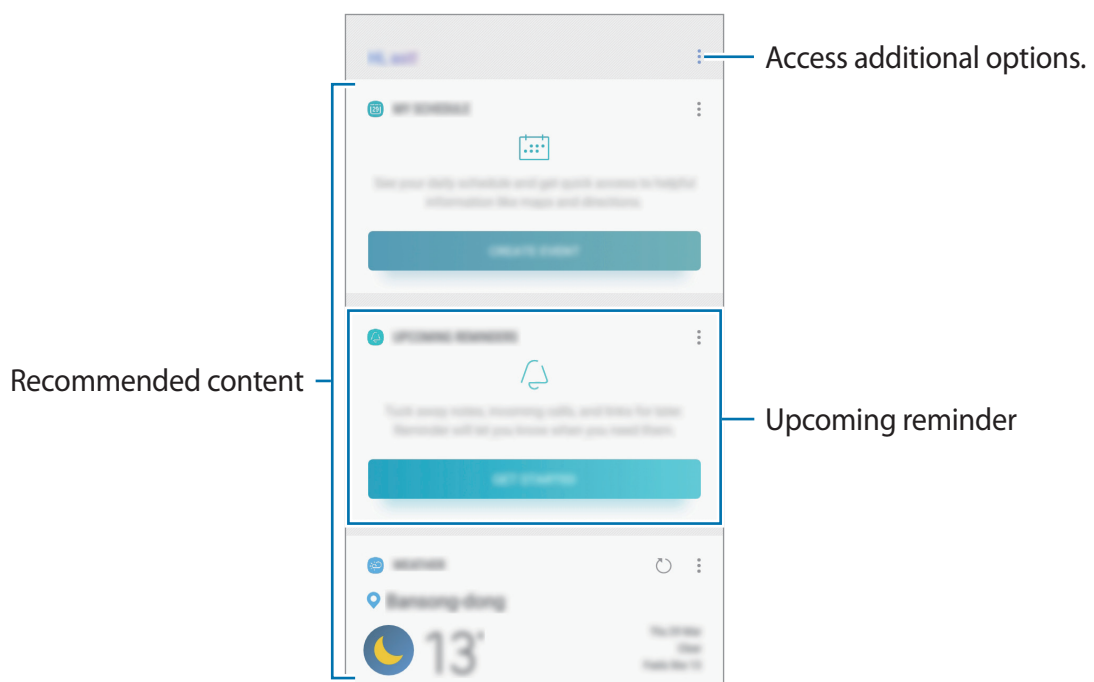
- 4 Tap **DONE** to finish registering your Samsung account.
- 5 Read and agree to the terms and conditions and tap **NEXT**.
The Bixby Home screen will appear.

Bixby Home

On the Bixby Home screen, you can view recommended services and information that Bixby provides by analysing your usage patterns and your routine.

Opening Bixby Home

- 1 Swipe to the right on the Home screen.
The Bixby Home screen will appear.
- 2 Swipe upwards or downwards to view recommended content.



- 3 To close Bixby Home, swipe to the left on the screen.

Using recommended content on Bixby Home





When you open Bixby Home, you can view the content that is frequently updated as Bixby cards. Swipe upwards or downwards to view the Bixby cards.

For example, on the way to the office in the morning, you can view your day's schedule and play your favourite music on the Bixby Home screen. In the evening, you can view alarms, check your daily activity, and view your friends' feeds.



The content and order of the cards update automatically at a specified interval. To manually update cards, swipe downwards on the screen.

Editing Bixby cards list


- To pin a card to the top of the Bixby Home screen, tap  → **Pin to top**. To unpin a card, tap  → **Unpin**.
- To hide a card from the list, tap  → **Hide for now**.
- To stop displaying a card on the list, tap  → **Don't show again**.

Selecting apps to show as Bixby cards

Add or delete apps to show as cards on the Bixby Home screen.

On the Bixby Home screen, tap  → **Settings** → **Cards** and tap the switches next to items to add or delete them.



If an app is not installed on the device, you must install it to use it. On the Bixby Home screen, tap  → **Settings** → **Cards** and then download an app.

Reminder

Create reminders to schedule to-do items or to view content later. You will receive notifications at the preset time or location for each reminder.

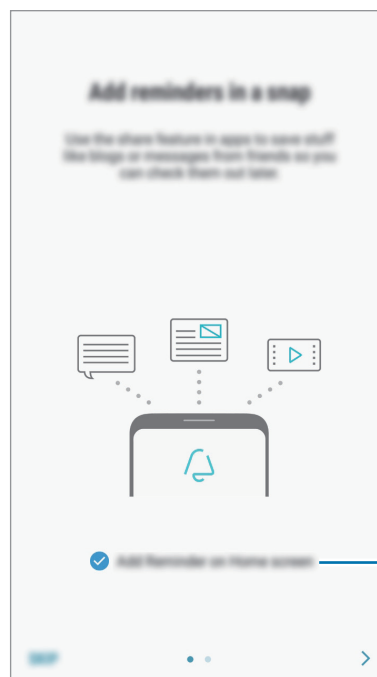
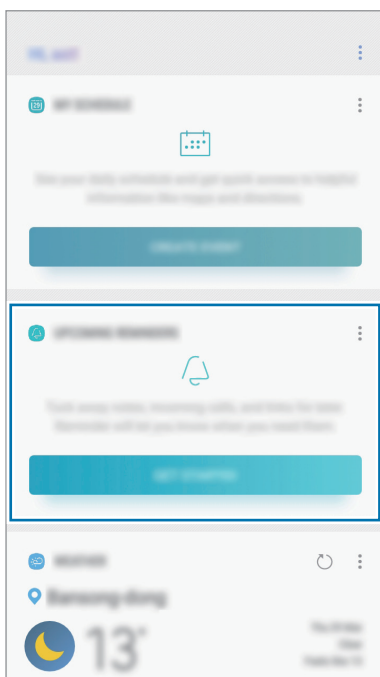


- To receive more accurate notifications, connect to a Wi-Fi or mobile network.
- To fully use this feature, you must register and sign in to your Samsung account.
- To use location reminders, the GPS feature must be activated.

Starting Reminder

You can start Reminder from Bixby Home.

- 1 Swipe to the right on the Home screen.
The Bixby Home screen will appear.
- 2 Tap **GET STARTED** on the **UPCOMING REMINDERS** card.
The Reminder intro page will appear.



Add the app icon to the Home screen.

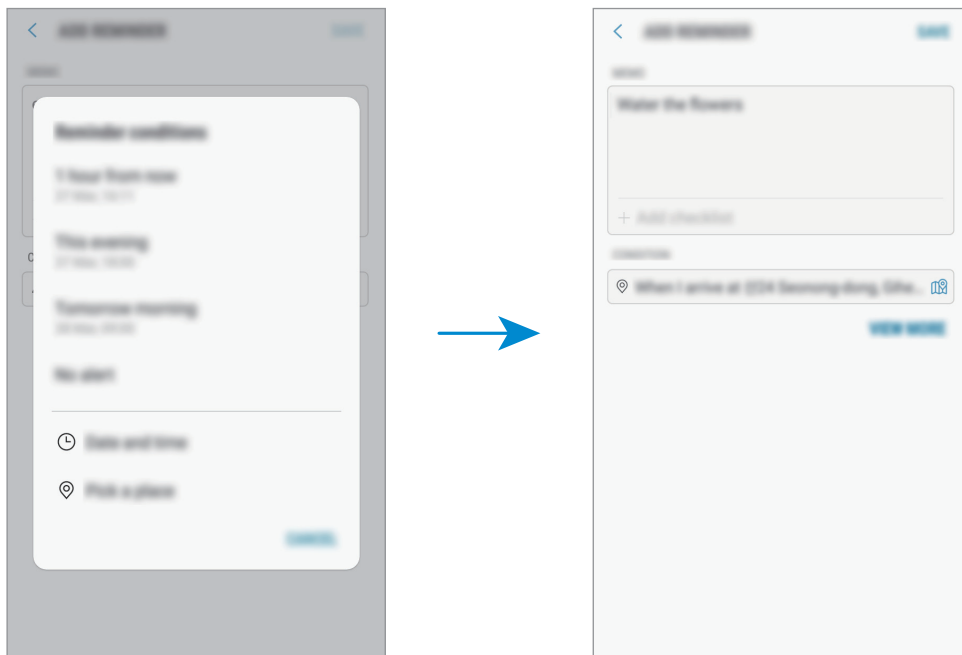
- 3 Tap **START**.
If the **Add Reminder on Home screen** option is ticked, you can launch the **Reminder** app (🔔) from the Home screen.

Creating reminders

Create reminders with various methods. Reminder will alert you if you create a reminder with a specified time or location setting. You can also save various content, such as a single memo or webpage address, and view it later.

For example, create a reminder to alert you to 'Water the flowers when I get home.'

- 1 Launch the **Reminder** app.
- 2 Tap **Write a reminder** and enter 'Water the flowers.'
- 3 Tap **Set conditions** → **Pick a place** and set the location to home.
- 4 Tap **WHEN I ARRIVE AT** → **DONE**.

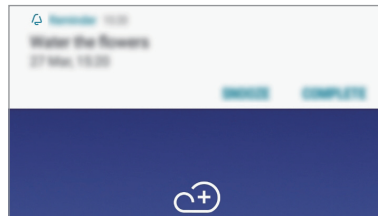


- 5 Tap **SAVE** to save the reminder.

When you arrive at home, the 'Water the flowers' notification will appear.

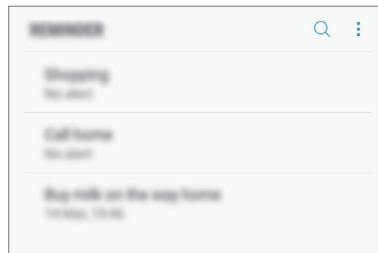
Checking reminder notifications

At the preset time or location, a notification pop-up window will appear. Tap **COMPLETE** or **SNOOZE**.



Viewing the reminders list

Launch the **Reminder** app to view your reminders list. To view reminder details, select a reminder.



Setting reminder details

Add or edit reminder details, such as frequency, date and time, or location.

- 1 Select a reminder to edit and tap **EDIT**. Alternatively, swipe right on a reminder and tap **Edit**.
- 2 Edit the conditions and tap **SAVE**.



Completing reminders

Mark reminders that you do not need to be reminded of as complete.

On the reminders list, select a reminder and tap **COMPLETE**. Alternatively, swipe to the left on a reminder.

Restoring reminders

Restore reminders that have been completed.

1 On the reminders list, tap  → **Completed** → **EDIT**.

2 Tick items to restore and tap **RESTORE**.

Reminders will be added to the reminders list and you will be reminded at the preset times.

Deleting reminders

To delete a reminder, swipe right on a reminder and tap **Delete**. To delete multiple reminders, tap and hold a reminder, tick reminders to delete, and then tap **DELETE**.

Customising Bixby settings

On the Bixby Home screen, tap  → **Settings**.

- **Samsung account:** View your Samsung account information.
- **Cards:** Select apps to show as cards on the Bixby Home screen.
- **Auto-update Bixby:** Set the device to update Bixby software automatically even when using your mobile network.



You can incur additional charges when using this feature.






- **Notifications:** Set to receive notifications about Bixby Home cards, marketing information, and more.
- **Privacy:** Set to use Bixby's interactive and customised services to enhance your experience. You can also delete Bixby interaction data.
- **About Bixby:** View the Bixby version and legal information.

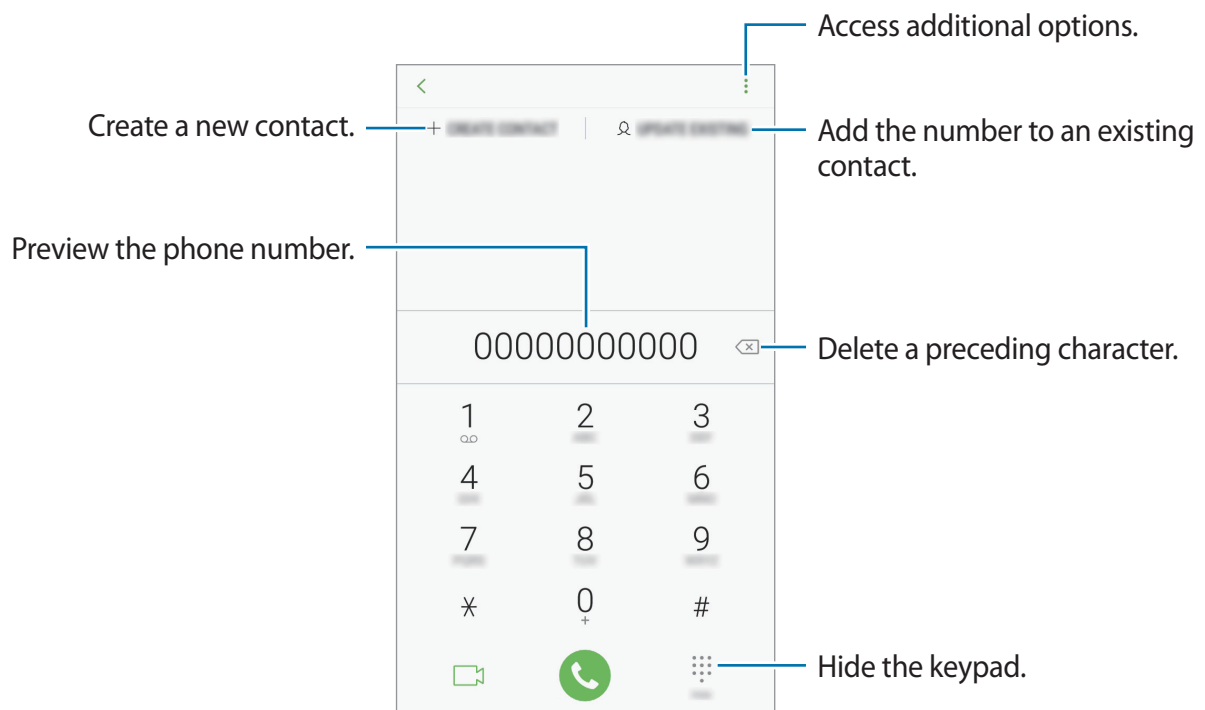
Phone

Introduction

Make or answer voice and video calls.

Making calls

- 1 Launch the **Phone** app and enter a phone number.
If the keypad does not appear on the screen, tap  to open the keypad.
- 2 Tap  to make a voice call, or tap  to make a video call.
For dual SIM models, tap  or  to make a voice call.




Making calls from call logs or contacts list

Tap **RECENTS** or **CONTACTS**, and then swipe to the right on a contact or a phone number to make a call. If this feature is deactivated, launch the **Settings** app, tap **Advanced features**, and then tap the **Swipe to call or send messages** switch to activate it.

Using speed dial

Set speed dial numbers to quickly make calls.

To set a number to speed dial, tap **CONTACTS** →  → **Speed dial numbers**, select a speed dial number, and then add a phone number.


To make a call, tap and hold a speed dial number on the keypad. For speed dial numbers 10 and up, tap the first digit(s) of the number, and then tap and hold the last digit.

For example, if you set the number **123** as a speed dial number, tap **1**, tap **2**, and then tap and hold **3**.


Making calls from the locked screen



On the locked screen, drag  outside the circle.

Making an international call

1 Tap  to open the keypad if the keypad does not appear on the screen.

2 Tap and hold **0** until the + sign appears.

3 Enter the country code, area code, and phone number, and then tap .

For dual SIM models, enter the country code, area code, and phone number, and then tap  or .

Receiving calls



Answering a call

When a call comes in, drag  outside the large circle.


Rejecting a call

When a call comes in, drag  outside the large circle.

To send a message when rejecting an incoming call, drag the rejection message bar upwards.

To create various rejection messages, launch the **Phone** app, tap  → **Settings** → **Quick decline messages**, enter a message, and then tap .

Missed calls


If a call is missed, the  icon appears on the status bar. Open the notification panel to view the list of missed calls. Alternatively, launch the **Phone** app and tap **RECENTS** to view missed calls.

Blocking phone numbers

Block calls from specific numbers added to your block list.

1 Launch the **Phone** app and tap  → **Settings** → **Block numbers**.

2 Tap , select contacts, and then tap **DONE**.

To manually enter a number, tap **Enter phone number**, enter a phone number, and then tap .

When blocked numbers try to contact you, you will not receive notifications. The calls will be logged in the call log.





You can also block incoming calls from people that do not show their caller ID. Tap the **Block unknown callers** switch to activate the feature.

Options during calls



During a voice call

The following actions are available:

- : Access additional options.
- **Add call:** Dial a second call. The first call will be put on hold. When you end the second call, the first call will be resumed.
- **Extra volume:** Increase the volume.
- **Bluetooth:** Switch to a Bluetooth headset if it is connected to the device.
- **Speaker:** Activate or deactivate the speakerphone. When using the speakerphone, keep the device away from your ears.
- **Mute:** Turn off the microphone so that the other party cannot hear you.
- **Keypad / Hide:** Open or close the keypad.
- : End the current call.


During a video call

Tap the screen to use the following options:

- : Access additional options.
- **Camera:** Turn off the camera so that the other party cannot see you.
- **Switch:** Switch between the front and rear cameras.
- : End the current call.
- **Mute:** Turn off the microphone so that the other party cannot hear you.
- **Speaker:** Activate or deactivate the speakerphone. When using the speakerphone, keep the device away from your ears.

Adding a phone number to Contact

Adding a phone number to Contacts from the keypad

- 1 Launch the **Phone** app.
- 2 Enter the number.
If the keypad does not appear on the screen, tap  to open the keypad.
- 3 Tap **CREATE CONTACT** to create a new contact, or tap **UPDATE EXISTING** to add the number to an existing contact.

Adding a phone number to Contacts from the calls list

- 1 Launch the **Phone** app and tap **RECENTS**.
- 2 Tap a phone number → **Details**.
- 3 Tap **Create contact** to create a new contact, or tap **Update existing** to add the number to an existing contact.

Adding a tag to a phone number

You can add tags to numbers without saving them to Contact. This allows you to view the caller's information when they call without having them listed in Contact.

- 1 Launch the **Phone** app and tap **RECENTS**.
- 2 Tap a phone number → **Details**.
- 3 Tap **Add tag**, enter a tag, and then tap **DONE**. When a call comes from that number, the tag will show under the number.


Contacts

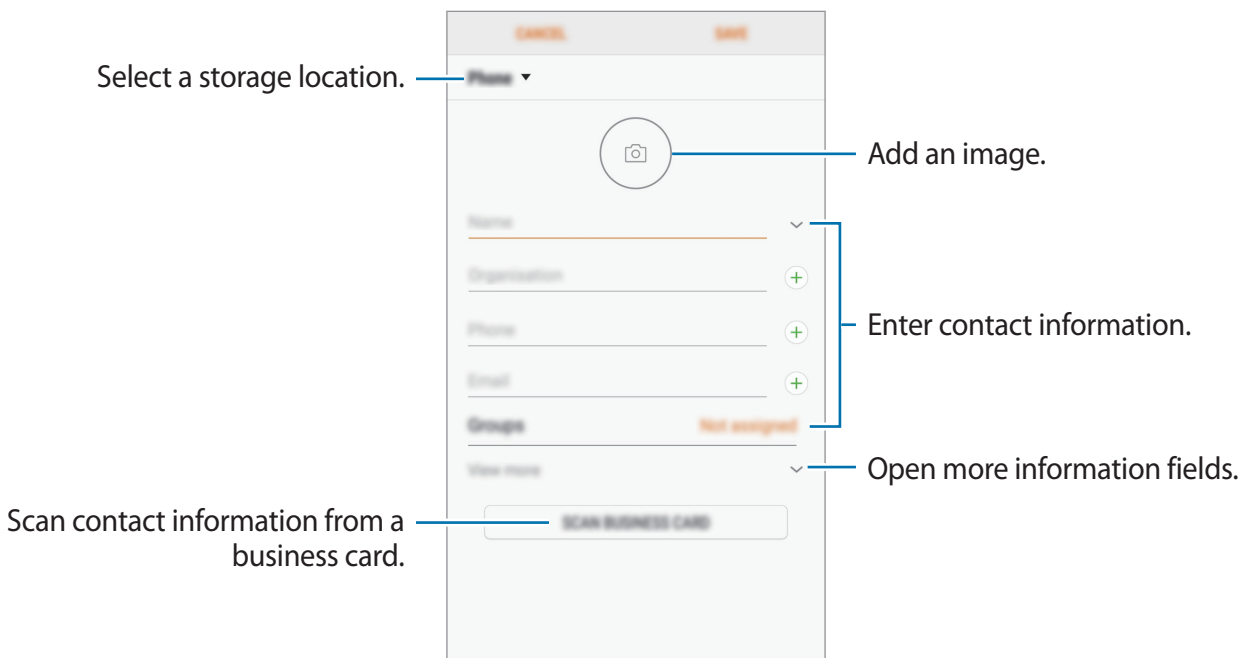
Introduction

Create new contacts or manage contacts on the device.

Adding contacts

Creating a new contact

- 1 Launch the **Contacts** app, tap , and then select a storage location.
- 2 Enter contact information.




Depending on the selected storage location, the types of information you can save may vary.

- 3 Tap **SAVE**.


Importing contacts

Add contacts by importing them from other storages to your device.

- 1 Launch the **Contacts** app and tap  → **Manage contacts** → **Import/Export contacts** → **IMPORT**.
- 2 Select a storage location to import contacts from.
- 3 Tick VCF files or contacts to import and tap **DONE**.
- 4 Select a storage location to save contacts to and tap **IMPORT**.

Syncing contacts with your web accounts

Sync your device contacts with online contacts saved in your web accounts, such as your Samsung account.

- 1 Launch the **Settings** app, tap **Cloud and accounts** → **Accounts** and select the account to sync with.
- 2 Tap **Sync account** and tap the **Sync Contacts** switch to activate it.
For the Samsung account, tap  → **Sync settings** and tap the **Contacts** switch to activate it.






Searching for contacts

Launch the **Contacts** app.

Use one of the following search methods:


- Scroll up or down the contacts list.
- Drag a finger along the index at the right side of the contacts list to scroll through it quickly.
- Tap the search field at the top of the contacts list and enter search criteria.

Tap the contact's name → **Details**. Then take one of the following actions:

-  : Add to favourite contacts.
-  /  : Make a voice or video call.
-  : Compose a message.
-  : Compose an email.

Sharing contacts

You can share contacts with others by using various sharing options.

- 1 Launch the **Contacts** app and tap  → **Share**.
- 2 Select contacts and tap **SHARE**.
- 3 Select a sharing method.

Saving and sharing profile

Save and share your profile information, such as your photo and status message, with others using the profile sharing feature.



- The profile sharing feature may not be available depending on the region or service provider.
- The profile sharing feature is only available for contacts who have activated the profile sharing feature on their device.

1 Launch the **Contacts** app and select your profile.

2 Tap **EDIT**, edit your profile, and tap **SAVE**.

3 Tap **☰** → **Profile sharing**, and then tap the switch to activate it.

To use the profile sharing feature, your phone number must be verified. You can view your contacts' updated profile information in **Contacts**.

To change the scope of contacts to share your profile with, tap **Share with**, select an item to share, and then select an option.

Creating groups

You can add groups, such as family or friends, and manage contacts by group.

1 Launch the **Contacts** app and tap **Groups** → **CREATE**.

2 Enter a group name.

To set a group ringtone, tap **Group ringtone** and select a ringtone.

3 Tap **Add member**, select contacts to add to the group, and then tap **DONE**.

4 Tap **SAVE**.


Sending a group message

You can send a group message to a group's members at the same time.


Launch the **Contacts** app, tap **Groups**, select a group, and then tap **☰** → **Send message**.


Merging duplicate contacts

When you import contacts from other storages, or sync contacts with other accounts, your contacts list may include duplicate contacts. Merge duplicate contacts into one to streamline your contacts list.

- 1 Launch the **Contacts** app and tap  → **Manage contacts** → **Merge contacts**.
- 2 Tick contacts and tap **MERGE**.

Deleting contacts

- 1 Launch the **Contacts** app and tap  → **Delete**.
- 2 Select contacts and tap **DELETE**.

To delete contacts one by one, open the contacts list and tap a contact's name → **Details**. Then tap  → **Delete**.

Messages


Introduction


Send and view messages by conversation.

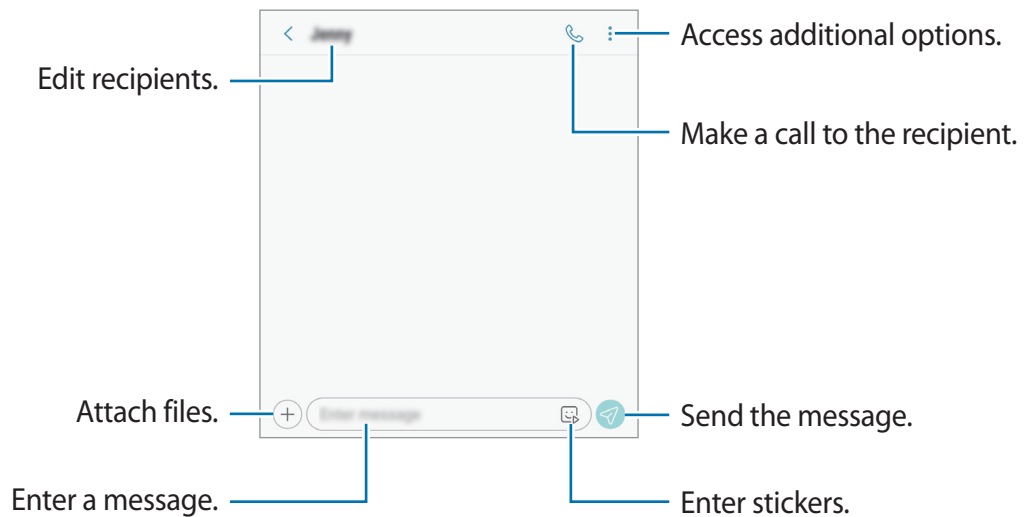
Sending messages






You may incur additional charges for sending messages when you are roaming.

- 1 Launch the **Messages** app and tap .
- 2 Add recipients and tap **START**.
- 3 Enter a message.

To record and send a voice message, tap and hold , say your message, and then release your finger. The recording icon appears only while the keyboard is hidden.






- 4 Tap  to send the message.
For dual SIM models, tap  or  to send the message.

Viewing messages

Messages are grouped into message threads by contact.





You may incur additional charges for receiving messages when you are roaming.

- 1 Launch the **Messages** app and tap **CONVERSATIONS**.
- 2 On the messages list, select a contact.
- 3 View your conversation.
To reply to the message, tap **Enter message**, enter a message, and then tap . For dual SIM models, tap  or .


Blocking unwanted messages

Block messages from specific numbers added to your block list.

- 1 Launch the **Messages** app and tap  → **Settings** → **Block numbers and messages** → **Block numbers**.
- 2 Tap **INBOX** and select a contact. Or, tap **CONTACTS**, select contacts, and then tap **DONE**.
To manually enter a number, tap **Enter number**, enter a phone number, and then tap .

Setting the message notification

You can change notification sound, display options, and more.

- 1 Launch the **Messages** app, tap  → **Settings** → **Notifications**, and then tap the switch to activate it.
- 2 Change the notification settings.

Setting a message reminder

You can set an alert at an interval to let you know that you have unchecked notifications. If this feature is not activated, launch the **Settings** app, tap **Accessibility** → **Notification reminder**, and then tap the switch to activate it. Then, tap the **Messages** switch to activate it.

Internet

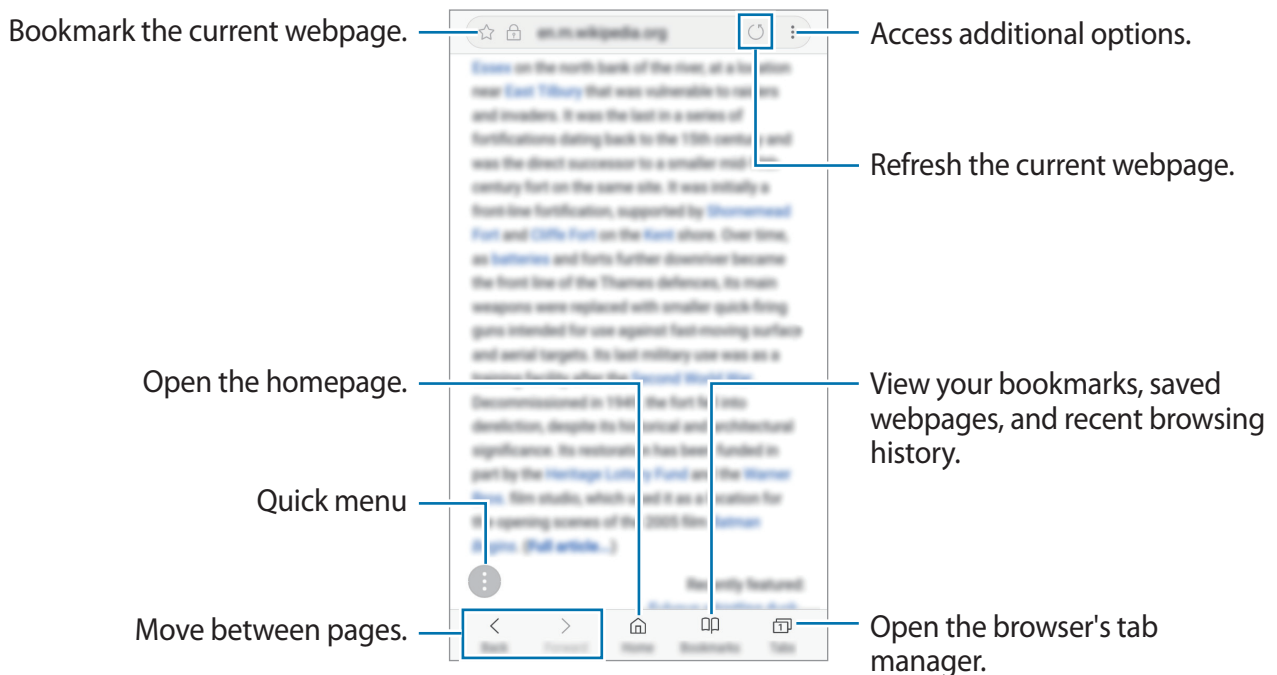
Introduction

Browse the Internet to search for information and bookmark your favourite webpages to access them conveniently.

Browsing webpages

- 1 Open the **Samsung** folder and launch the **Internet** app.
- 2 Tap the address field.
- 3 Enter the web address or a keyword, and then tap **Go**.

To view the toolbars, drag your finger downwards slightly on the screen.



Using secret mode

In secret mode, you can separately manage open tabs, bookmarks, and saved pages. You can lock secret mode using a password.

Activating secret mode

In the toolbar at the bottom of the screen, tap **Tabs** → **TURN ON SECRET MODE**. If you are using this feature for the first time, set whether to use a password for secret mode.



In secret mode, you cannot use some features, such as screen capture.

In secret mode, the device will change the colour of the toolbars.

Changing security settings

You can change your password.

Tap  → **Settings** → **Privacy** → **Secret mode security** → **Change password**.

Deactivating secret mode



In the toolbar at the bottom of the screen, tap **Tabs** → **TURN OFF SECRET MODE**.




Email

Setting up email accounts


Set up an email account when opening **Email** for the first time.

- 1 Open the **Samsung** folder and launch the **Email** app.
- 2 Enter the email address and password, and then tap **SIGN IN**.
To manually register an email account, tap **MANUAL SETUP**.
- 3 Follow the on-screen instructions to complete the setup.

To set up another email account, tap  →  → **Add account**.

If you have more than one email account, you can set one as the default account. Tap  →  →  → **Set default account**.

Sending emails



- 1 Tap  to compose an email.
- 2 Add recipients and enter an email text.
- 3 Tap **SEND** to send the mail.

Reading emails

When **Email** is open, the device will automatically retrieve new emails. To manually retrieve emails, swipe downwards on the screen.

Tap an email on the screen to read it.



If email syncing is disabled, new emails cannot be retrieved. To enable email syncing, tap  →  → your account name, and then tap the **Sync account** switch to activate it.

Camera

Introduction


Take photos and record videos using various modes and settings.

Camera etiquette

- Do not take photos or record videos of other people without their permission.
- Do not take photos or record videos where legally prohibited.
- Do not take photos or record videos in places where you may violate other people's privacy.

Launching Camera

Use the following methods to launch Camera:



- Launch the **Camera** app.
- On the locked screen, drag  outside the circle.






- Some methods may not be available depending on the region or service provider.
- Some camera features are not available when you launch the **Camera** app from the locked screen or when the screen is turned off while the screen lock method is set.
- If photos you take appear blurry, clean the camera lens and try again.

Basic shooting

Taking photos or recording videos

- 1 Tap the image on the preview screen where the camera should focus.
- 2 Tap  to take a photo or tap  to record a video.



- To adjust the brightness of photos or videos, tap the screen. When the adjustment bar appears, drag  on the adjustment bar towards **+** or **-**.
- To capture an image from the video while recording, tap .
- To change the focus while recording a video, tap where you want to focus. To use auto focus mode, tap .

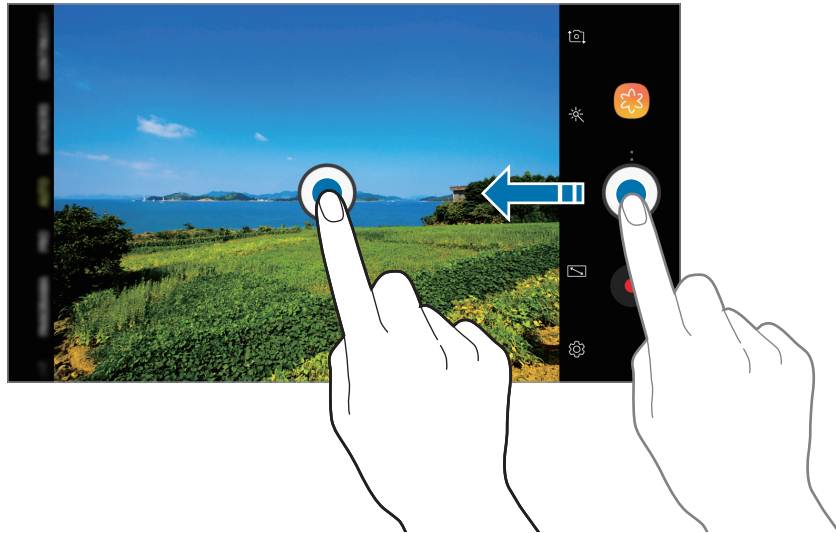



- The preview screen may vary depending on the shooting mode and which camera is being used.
- The camera automatically shuts off when unused.
- Make sure that the lens is not damaged or contaminated. Otherwise, the device may not work properly in some modes that require high resolutions.
- Your device's camera features a wide-angle lens. Minor distortion may occur in wide-angle photos or videos and does not indicate device performance problems.

Adding another camera button

Add another camera button to the location you want on the screen to capture photos more conveniently.


Drag  to the preview screen.



If another camera button is not added, tap  on the preview screen and tap the **Floating Camera button** switch to activate it.

Zooming in and out

Use various methods to zoom in or out.

- Spread two fingers apart on the screen to zoom in, and pinch to zoom out.
- Control the zoom with one finger. Drag  on the zoom bar towards **+** or **-**.



Zooming features are available only when using the rear camera.

Locking the focus (AF) and exposure (AE)

You can lock the focus or exposure on a selected area to prevent the camera from automatically adjusting based on changes to the subjects or light sources.

Tap and hold the area to focus, the AF/AE frame will appear on the area and the focus and exposure setting will be locked. The setting remains locked even after you take a photo.




This feature is available only in **AUTO** and **PRO** modes.

Using shooting modes

To change the shooting mode, drag the shooting modes list to the left or right, or swipe to the left or right on the preview screen.

Select a shooting mode you want.



You can edit the shooting modes list. On the preview screen, tap  → **Edit camera modes**. Alternatively, tap and hold the shooting modes list on the preview screen.



Auto mode

Auto mode allows the camera to evaluate the surroundings and determine the ideal mode for the photo.




On the shooting modes list, tap **AUTO**.

Pro mode

Capture photos and videos while manually adjusting various shooting options, such as exposure value and ISO value.

On the shooting modes list, tap **PRO**. Select options and customise the settings, and then tap  to take a photo or tap  to record a video.

Available options

-  : Change the exposure value. This determines how much light the camera's sensor receives. For low-light situations, use a higher exposure.
-  : Select an ISO value. This controls camera light sensitivity. Low values are for stationary or brightly lit objects. Higher values are for fast-moving or poorly lit objects. However, higher ISO settings can result in noise in photos.
-  : Select an appropriate white balance, so images have a true-to-life colour range. You can set the colour temperature.

Panorama mode

Using panorama mode, take a series of photos and then stitch them together to create a wide scene.



To get the best shots using panorama mode, follow these tips:

- Move the camera slowly in one direction.
- Keep the image within the frame on the camera's viewfinder. If the preview image is out of the guide frame or you do not move the device, the device will automatically stop taking photos.
- Avoid taking photos of indistinct backgrounds, such as an empty sky or a plain wall.

1 On the shooting modes list, tap **PANORAMA**.

2 Tap  and move the device slowly in one direction.

3 Tap  to stop taking photos.

Night mode

Take a photo in low-light conditions, without using the flash.

On the shooting modes list, tap **NIGHT**.

HDR (Rich tone) mode

Take photos with rich colours and reproduce details even in bright and dark areas.

On the shooting modes list, tap **HDR (RICH TONE)**.



Without effect



With effect

Continuous shot mode

Take a series of photos of moving subjects.

On the shooting modes list, tap **CONTINUOUS SHOT**.


Tap and hold  to take several photos continuously.

Sports mode

Take clearer photos of fast-moving subjects, such as a person running or a pet in motion.

On the shooting modes list, tap **SPORTS**.



You must first add this mode to the shooting modes list before you can use it. On the preview screen, tap  → **Edit camera modes** → **Rear camera**, and then tick **Sports**.


Sound & shot mode

Take a photo with sound. The device identifies the photos with  in **Gallery**.

On the shooting modes list, tap **SOUND & SHOT**.

Selfie mode

Take self-portraits with the front camera. You can preview various beauty effects on the screen.

1 On the preview screen, swipe upwards or downwards, or tap  to switch to the front camera for self-portraits.


2 On the shooting modes list, tap **SELFIE**.

3 Face the front camera lens.

4 Tap  to take a photo.



Alternatively, show your palm to the front camera. After recognising your palm, a countdown timer will appear. When the time is up, the device will take a photo.



To use various shooting options for the front camera, tap  → **Shooting methods**, and then tap the switches to activate them.

Using the selfie flash

When taking self-portraits with the front camera in low-light situations, the touchscreen can serve as a flash.

On the preview screen, tap  repeatedly until you reach . When you take a photo, the touchscreen will flash.

Applying beauty effects

You can modify facial features, such as your skin tone or face shape, before taking self-portraits.



This feature is available only in **SELFIE** mode.


1 On the preview screen, tap .

2 Select the options below to apply beauty effects to your face on the preview screen and take a photo of yourself.

- **Skin tone:** Make your skin appear brighter and clearer.
- **Face:** Adjust the face shape and make your face appear slimmer.
- **Eyes:** Make your eyes appear bigger.

Wide selfie mode

Take a wide self-portrait and include as many people in the photo as possible to avoid leaving people out.

1 On the preview screen, swipe upwards or downwards, or tap  to switch to the front camera for self-portraits.


2 On the shooting modes list, tap **WIDE SELFIE**.

3 Face the front camera lens.

4 Tap  to take a photo.

Alternatively, show your palm to the front camera. After recognising your palm, a countdown timer will appear. When the time is up, the device will take a photo.



To use various shooting options for the front camera, tap  → **Shooting methods**, and then tap the switches to activate them.

5 Slowly swivel the device left and then right or vice versa to take a wide self-portrait.

The device will take additional photos when the white frame moves to each end of the viewfinder window.



- Make sure to keep the white frame inside the viewfinder window.
- The subjects should remain still while taking wide self-portraits.
- The top and bottom parts of the image displayed on the preview screen may be cut out of the photo depending on the shooting conditions.



Customising camera settings

Options for current shooting mode

On the preview screen, use the following options.









The available options may vary depending on the shooting mode and which camera is being used.


- : Turn on and off the full preview screen.
- : Activate or deactivate the flash.



Do not use the flash close to your eyes. Using a flash close to the eyes may cause temporary loss of vision or damage to the eyes.

- : Select a filter effect to use when taking photos or recording videos.
- : Select a metering method. This determines how light values are calculated.  **Centre-weighted** uses the light in the centre portion of the shot to calculate the exposure of the shot.  **Spot** uses the light in a concentrated centre area of the shot to calculate the exposure of the shot.  **Matrix** averages the entire scene.
- : Set the device to record sound before or after taking a photo.

Camera settings

On the preview screen, tap . Some options may not be available depending on the shooting mode.


REAR CAMERA

- **Picture size:** Select a resolution for photos. Using a higher resolution will result in higher quality photos, but they will take up more memory.
- **Video size:** Select a resolution for videos. Using a higher resolution will result in higher quality videos, but they will take up more memory.
- **Timer:** Select the length of the delay before the camera automatically takes a photo.

FRONT CAMERA

- **Picture size:** Select a resolution for photos. Using a higher resolution will result in higher quality photos, but they will take up more memory.
- **Video size:** Select a resolution for videos. Using a higher resolution will result in higher quality videos, but they will take up more memory.
- **Timer:** Select the length of the delay before the camera automatically takes a photo.
- **Save pictures as previewed:** Invert the image to create a mirror-image of the original scene, when taking photos with the front camera.
- **Shooting methods:** Select shooting options to use.

COMMON

- **Edit camera modes:** View available shooting modes or edit the shooting modes list.
- **Grid lines:** Display viewfinder guides to help composition when selecting subjects.
- **Location tags:** Attach a GPS location tag to the photo.
 -  GPS signal strength may decrease in locations where the signal is obstructed, such as between buildings or in low-lying areas, or in poor weather conditions.
 - Your location may appear on your photos when you upload them to the Internet. To avoid this, deactivate the location tag setting.
- **Review pictures:** Set the device to show photos after capturing them.
- **Quick launch:** Set the device to launch the camera by pressing the Home key twice quickly.



This feature may not be available depending on the region or service provider.

- **Storage location:** Select the memory location for storage.
- **Floating Camera button:** Add a camera button that you can place anywhere on the screen.
- **Press Volume key to:** Set the device to use the Volume key to control the shutter or zoom in or out.
- **Reset settings:** Reset the camera settings.
- **Contact us:** Ask questions or view frequently asked questions. Refer to [Samsung Members](#) for more information.

Gallery

Introduction

View images and videos stored in your device. You can also manage images and videos by album or create stories.

