

GSM 1900

Frequency: 1880 MHz; Duty Cycle: 1:4.00037; Room Ambient Temperature: 24.0°C; Liquid Temperature: 23.0°C
 Medium parameters used: $f = 1880 \text{ MHz}$; $\sigma = 1.437 \text{ S/m}$; $\epsilon_r = 38.681$; $\rho = 1000 \text{ kg/m}^3$

DASY5 Configuration:

- Area Scan Setting: Find Secondary Maximum Within: 2.0 dB and with a peak SAR value greater than 0.0012W/kg
- Electronics: DAE4 Sn1494; Calibrated: 2015-11-11
- Probe: EX3DV4 - SN7313; ConvF(7.85, 7.85, 7.85); Calibrated: 2015-12-30;
- Sensor-Surface: 2mm (Mechanical Surface Detection)
- Phantom: SAM Phantom CRP v5.0(Right); Type: QD000P40CD; Serial: TP:1855

LHS/Touch_GPRS 2 slots_ch 661/Area Scan (8x11x1): Measurement grid: dx=15mm, dy=15mm
 Maximum value of SAR (measured) = 0.283 W/kg

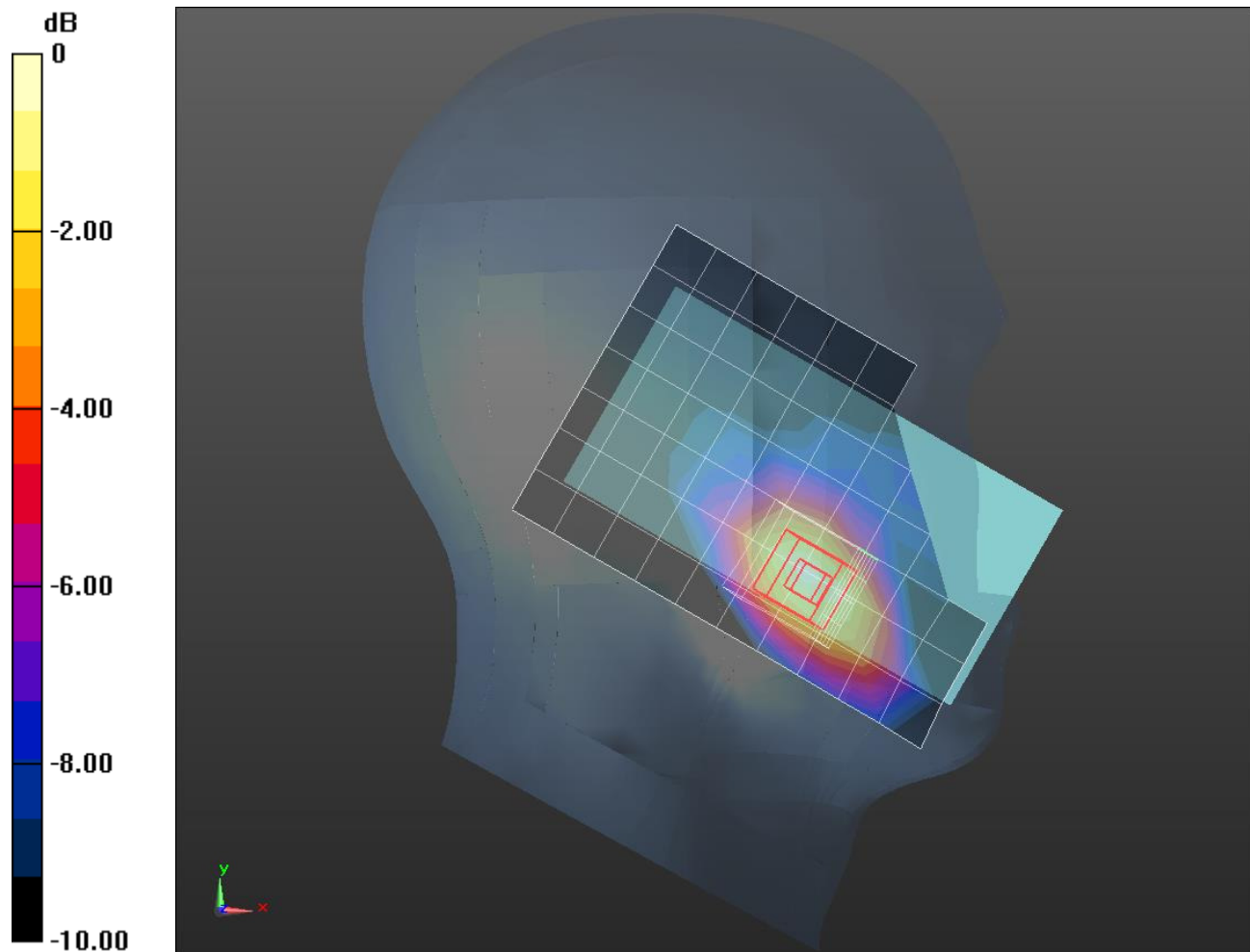
LHS/Touch_GPRS 2 slots_ch 661/Zoom Scan (5x5x7)/Cube 0: Measurement grid: dx=8mm, dy=8mm, dz=5mm

Reference Value = 14.29 V/m; Power Drift = 0.07 dB

Peak SAR (extrapolated) = 0.368 W/kg

SAR(1 g) = 0.223 W/kg; SAR(10 g) = 0.130 W/kg

Maximum value of SAR (measured) = 0.294 W/kg



0 dB = 0.294 W/kg = -5.32 dBW/kg

GSM1900

Frequency: 1880 MHz; Duty Cycle: 1:4.00037; Room Ambient Temperature: 24.0°C; Liquid Temperature: 23.0°C
 Medium parameters used: $f = 1880 \text{ MHz}$; $\sigma = 1.563 \text{ S/m}$; $\epsilon_r = 55.452$; $\rho = 1000 \text{ kg/m}^3$

DASY5 Configuration:

- Area Scan Setting: Find Secondary Maximum Within: 2.0 dB and with a peak SAR value greater than 0.0012W/kg
- Electronics: DAE4 Sn1494; Calibrated: 2015-11-11
- Probe: EX3DV4 - SN7313; ConvF(7.54, 7.54, 7.54); Calibrated: 2015-12-30;
- Sensor-Surface: 2mm (Mechanical Surface Detection)
- Phantom: ELI v6.0; Type: QDOVA003AA; Serial: TP:xxxx

Front/GPRS 2 slots_ch661/Area Scan (12x8x1): Measurement grid: dx=15mm, dy=15mm

Maximum value of SAR (measured) = 0.493 W/kg

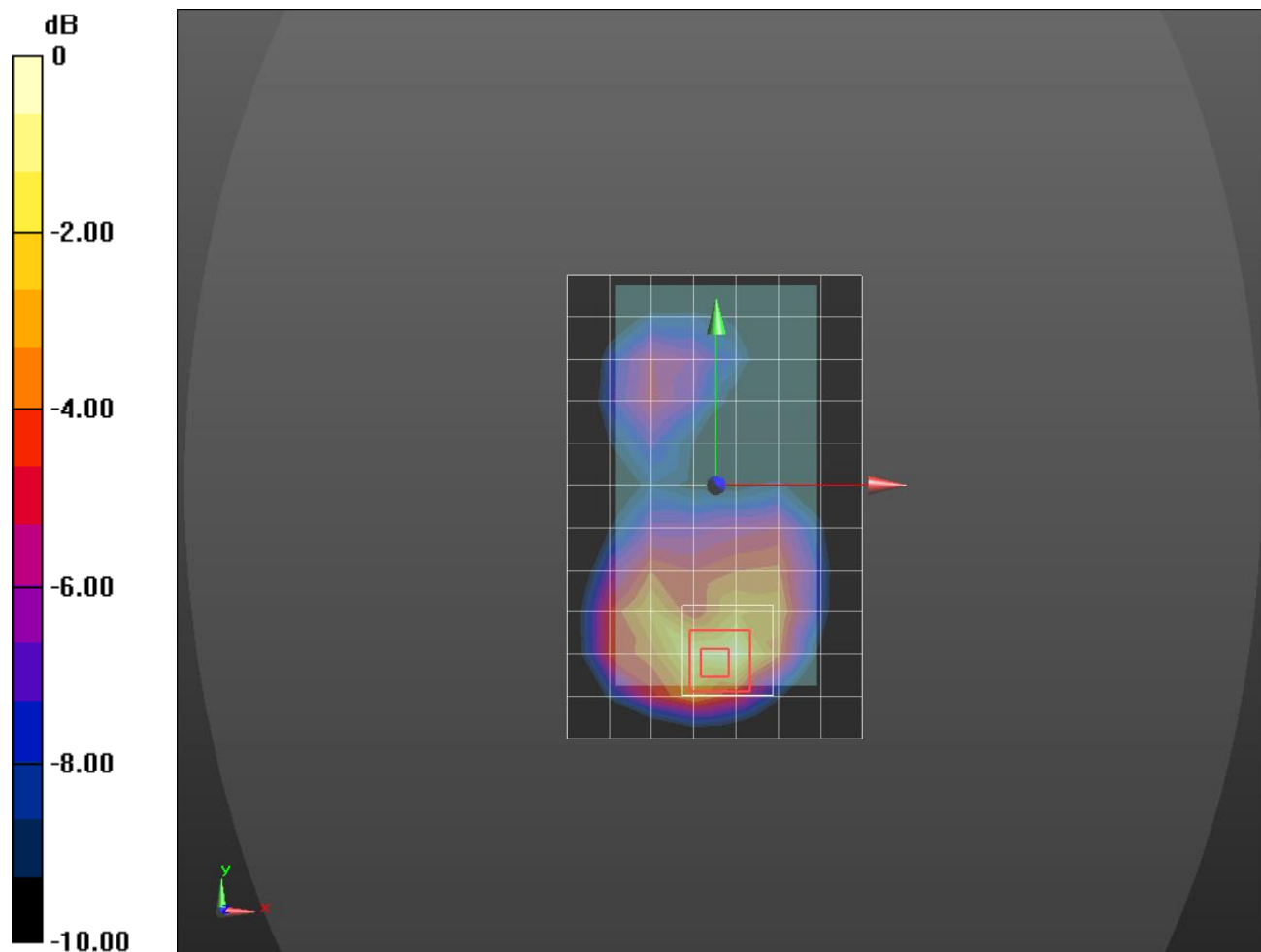
Front/GPRS 2 slots_ch661/Zoom Scan (5x5x7)/Cube 0: Measurement grid: dx=8mm, dy=8mm, dz=5mm

Reference Value = 18.03 V/m; Power Drift = 0.10 dB

Peak SAR (extrapolated) = 0.707 W/kg

SAR(1 g) = 0.404 W/kg; SAR(10 g) = 0.217 W/kg

Maximum value of SAR (measured) = 0.542 W/kg



0 dB = 0.542 W/kg = -2.66 dBW/kg

WCDMA Band 2

Frequency: 1880 MHz; Duty Cycle: 1:1; Room Ambient Temperature: 24.0°C; Liquid Temperature: 23.0°C
 Medium parameters used: $f = 1880 \text{ MHz}$; $\sigma = 1.437 \text{ S/m}$; $\epsilon_r = 38.681$; $\rho = 1000 \text{ kg/m}^3$

DASY5 Configuration:

- Area Scan Setting: Find Secondary Maximum Within: 2.0 dB and with a peak SAR value greater than 0.0012W/kg
- Electronics: DAE4 Sn1494; Calibrated: 2015-11-11
- Probe: EX3DV4 - SN7313; ConvF(7.85, 7.85, 7.85); Calibrated: 2015-12-30;
- Sensor-Surface: 2mm (Mechanical Surface Detection)
- Phantom: SAM Phantom CRP v5.0(Right); Type: QD000P40CD; Serial: TP:1855

LHS/Touch_Rel.99 ch 9400/Area Scan (7x11x1): Measurement grid: dx=15mm, dy=15mm

Maximum value of SAR (measured) = 0.539 W/kg

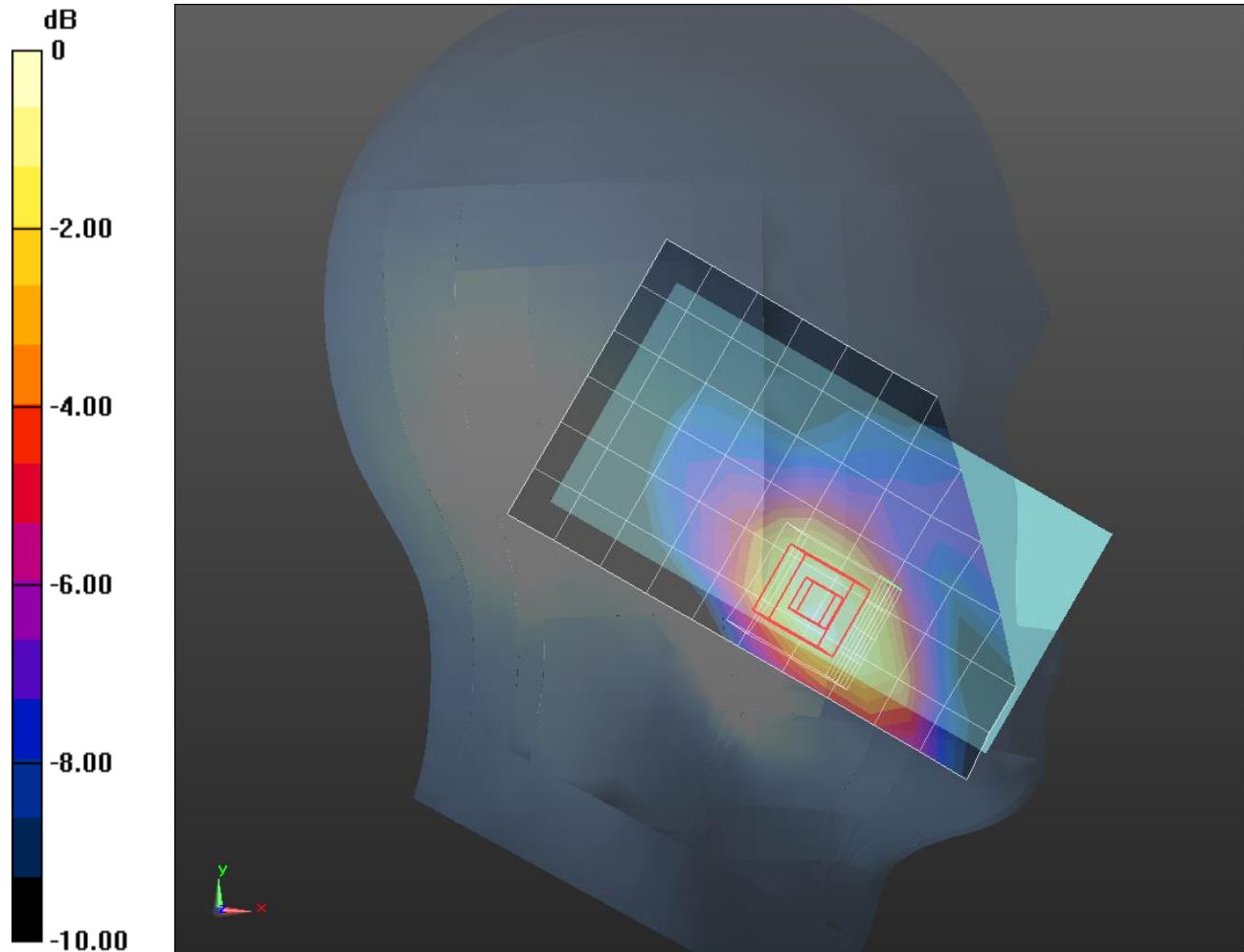
LHS/Touch_Rel.99 ch 9400/Zoom Scan (5x5x7)/Cube 0: Measurement grid: dx=8mm, dy=8mm, dz=5mm

Reference Value = 19.83 V/m; Power Drift = -0.04 dB

Peak SAR (extrapolated) = 0.727 W/kg

SAR(1 g) = 0.454 W/kg; SAR(10 g) = 0.271 W/kg

Maximum value of SAR (measured) = 0.589 W/kg



0 dB = 0.589 W/kg = -2.30 dBW/kg

WCDMA Band 2

Frequency: 1907.6 MHz; Duty Cycle: 1:1; Room Ambient Temperature: 24.0°C; Liquid Temperature: 23.0°C
 Medium parameters used (interpolated): $f = 1907.6$ MHz; $\sigma = 1.592$ S/m; $\epsilon_r = 53.703$; $\rho = 1000$ kg/m³

DASY5 Configuration:

- Area Scan Setting: Find Secondary Maximum Within: 2.0 dB and with a peak SAR value greater than 0.0012W/kg
- Electronics: DAE4 Sn1494; Calibrated: 2015-11-11
- Probe: EX3DV4 - SN7313; ConvF(7.54, 7.54, 7.54); Calibrated: 2015-12-30;
- Sensor-Surface: 2mm (Mechanical Surface Detection)
- Phantom: ELI v6.0; Type: QDOVA003AA; Serial: TP:xxxx

Front/RMC Rel.99 ch9538/Area Scan (12x7x1): Measurement grid: dx=15mm, dy=15mm

Maximum value of SAR (measured) = 1.33 W/kg

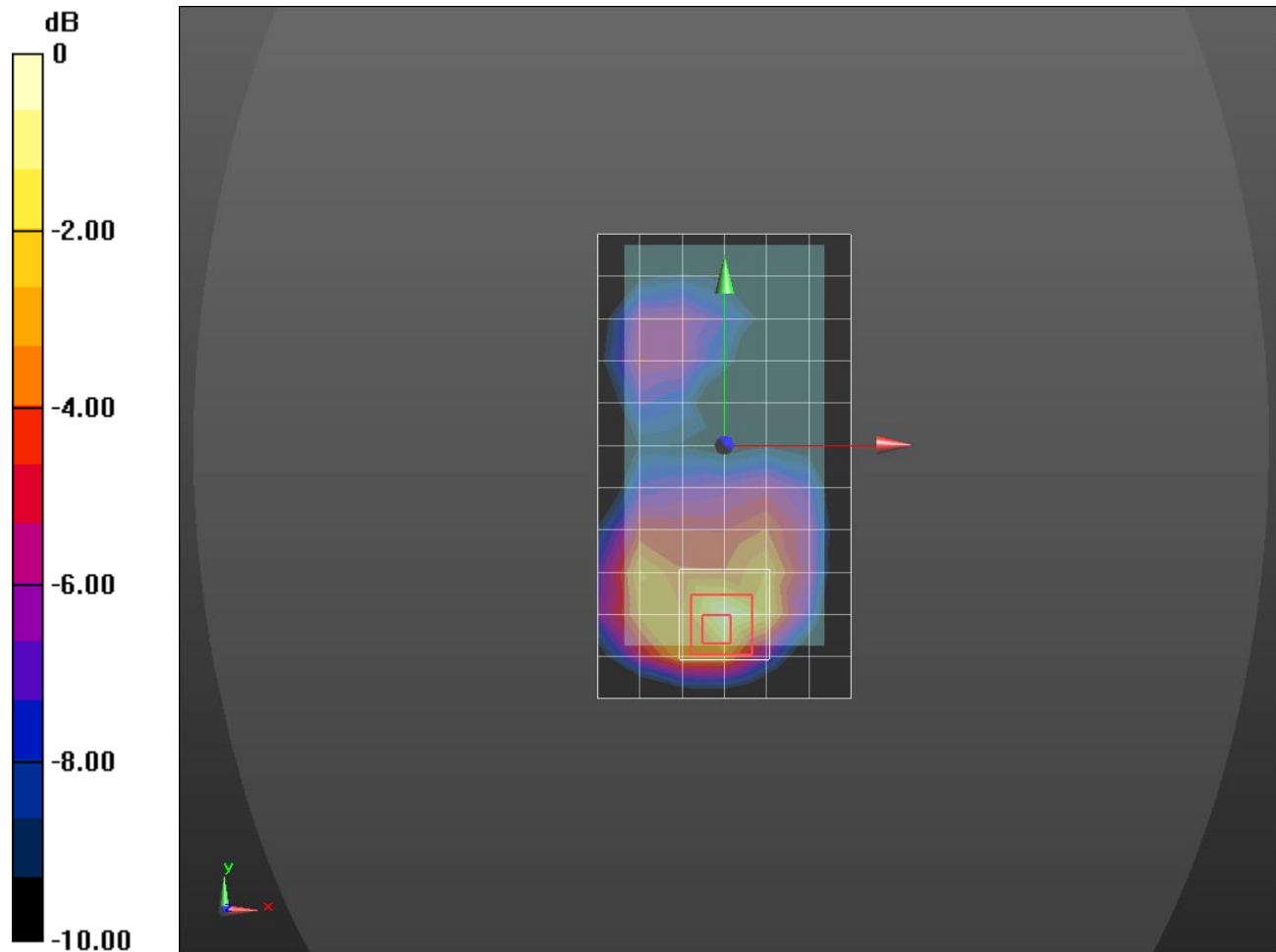
Front/RMC Rel.99 ch9538/Zoom Scan (5x5x7)/Cube 0: Measurement grid: dx=8mm, dy=8mm, dz=5mm

Reference Value = 29.73 V/m; Power Drift = -0.19 dB

Peak SAR (extrapolated) = 1.82 W/kg

SAR(1 g) = 1.04 W/kg; SAR(10 g) = 0.551 W/kg

Maximum value of SAR (measured) = 1.38 W/kg



0 dB = 1.38 W/kg = 1.40 dBW/kg

WCDMA Band 5

Frequency: 836.6 MHz; Duty Cycle: 1:1; Room Ambient Temperature: 24.0°C; Liquid Temperature: 23.0°C

Medium parameters used (interpolated): $f = 836.6$ MHz; $\sigma = 0.924$ S/m; $\epsilon_r = 42.013$; $\rho = 1000$ kg/m³

DASY5 Configuration:

- Area Scan Setting: Find Secondary Maximum Within: 2.0 dB and with a peak SAR value greater than 0.0012W/kg
- Electronics: DAE4 Sn1468; Calibrated: 2015-09-15
- Probe: EX3DV4 - SN7376; ConvF(9.99, 9.99, 9.99); Calibrated: 2015-09-02;
- Sensor-Surface: 2mm (Mechanical Surface Detection)
- Phantom: SAM (20deg probe tilt) with CRP v5.0(Right); Type: QD000P40CD; Serial: TP:1846

LHS/Touch_RMC Rel .99_ch 4183/Area Scan (7x12x1): Measurement grid: dx=15mm, dy=15mm

Maximum value of SAR (measured) = 0.407 W/kg

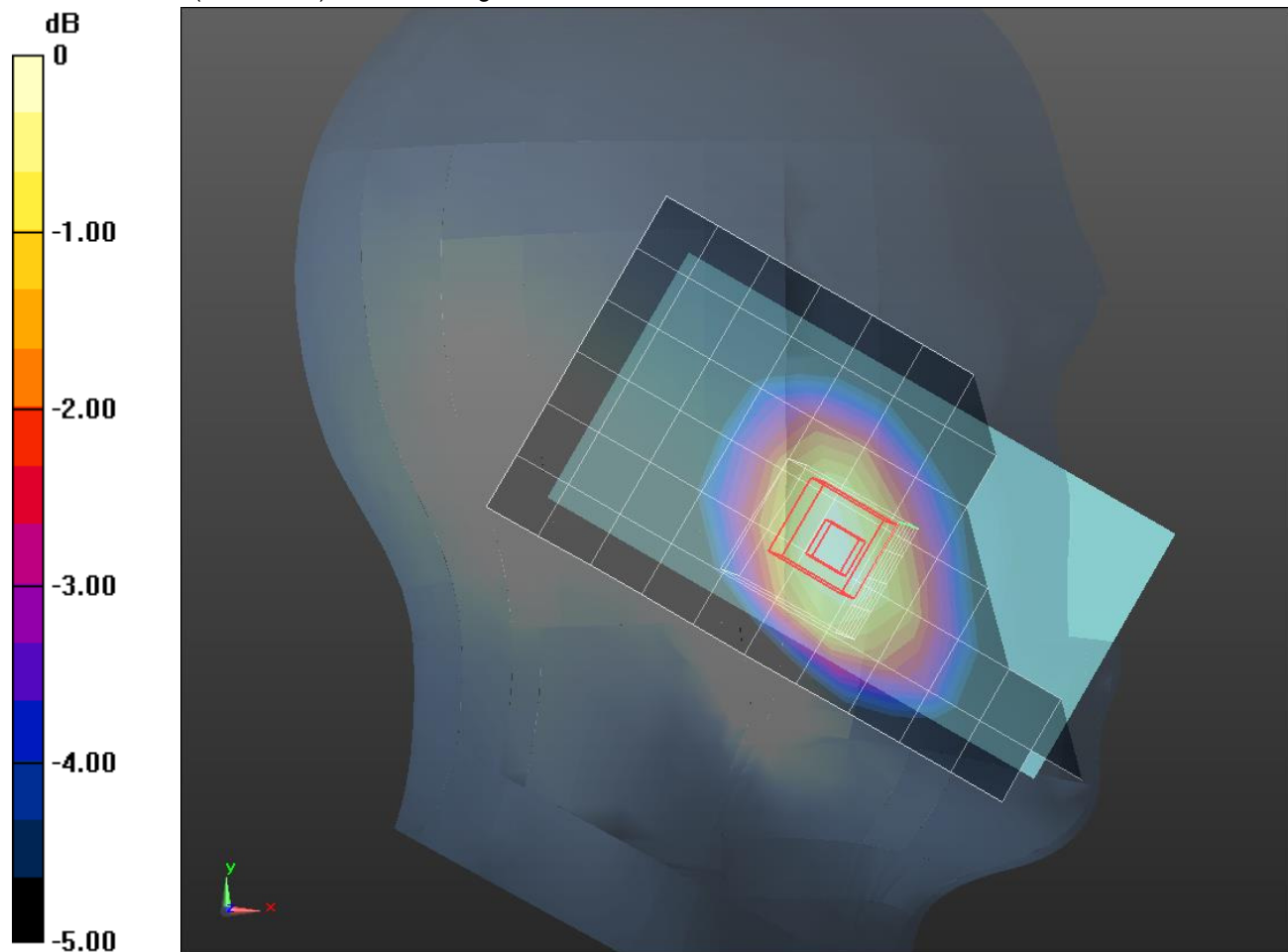
LHS/Touch_RMC Rel .99_ch 4183/Zoom Scan (5x5x7)/Cube 0: Measurement grid: dx=8mm, dy=8mm, dz=5mm

Reference Value = 21.72 V/m; Power Drift = -0.04 dB

Peak SAR (extrapolated) = 0.476 W/kg

SAR(1 g) = 0.372 W/kg; SAR(10 g) = 0.283 W/kg

Maximum value of SAR (measured) = 0.428 W/kg



0 dB = 0.428 W/kg = -3.69 dBW/kg

WCDMA Band 5

Frequency: 836.6 MHz; Duty Cycle: 1:1; Room Ambient Temperature: 24.0°C; Liquid Temperature: 23.0°C
 Medium parameters used (interpolated): $f = 836.6$ MHz; $\sigma = 1.014$ S/m; $\epsilon_r = 53.034$; $\rho = 1000$ kg/m³

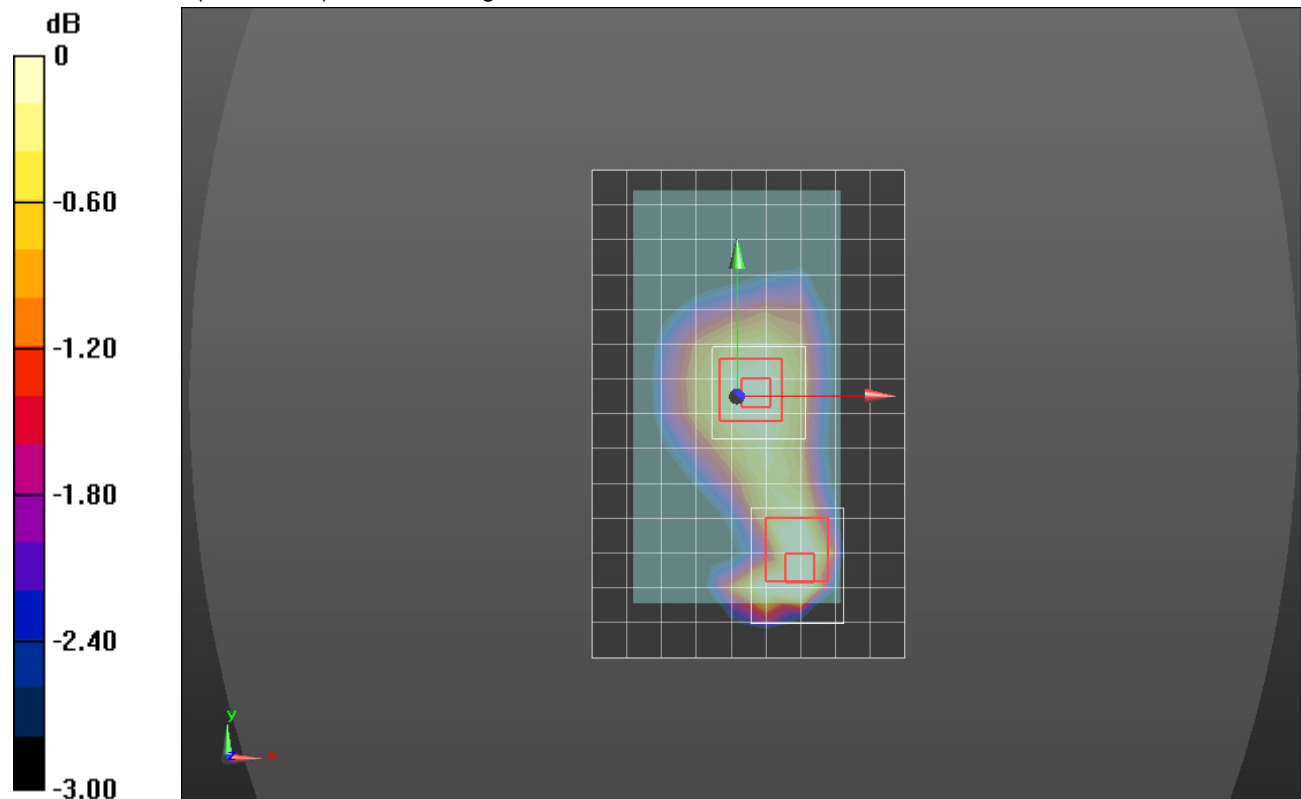
DASY5 Configuration:

- Area Scan Setting: Find Secondary Maximum Within: 2.0 dB and with a peak SAR value greater than 0.0012W/kg
- Electronics: DAE4 Sn1468; Calibrated: 2015-09-15
- Probe: EX3DV4 - SN7376; ConvF(10.07, 10.07, 10.07); Calibrated: 2015-09-02;
- Sensor-Surface: 2mm (Mechanical Surface Detection)
- Phantom: ELI v6.0; Type: QDOVA003AA; Serial: TP:xxxx

Rear_0323/RMC Rel.99 ch4183 2/Area Scan (15x10x1): Measurement grid: dx=12mm, dy=12mm
 Maximum value of SAR (measured) = 0.564 W/kg

Rear_0323/RMC Rel.99 ch4183 2/Zoom Scan (5x6x7)/Cube 0: Measurement grid: dx=8mm, dy=8mm, dz=5mm
 Reference Value = 24.07 V/m; Power Drift = -0.02 dB
 Peak SAR (extrapolated) = 0.771 W/kg
SAR(1 g) = 0.443 W/kg; SAR(10 g) = 0.264 W/kg
 Maximum value of SAR (measured) = 0.612 W/kg

Rear_0323/RMC Rel.99 ch4183 2/Zoom Scan 2 (5x5x7)/Cube 0: Measurement grid: dx=8mm, dy=8mm, dz=5mm
 Reference Value = 24.07 V/m; Power Drift = -0.02 dB
 Peak SAR (extrapolated) = 0.511 W/kg
SAR(1 g) = 0.405 W/kg; SAR(10 g) = 0.308 W/kg
 Maximum value of SAR (measured) = 0.466 W/kg



0 dB = 0.466 W/kg = -3.32 dBW/kg

LTE Band V

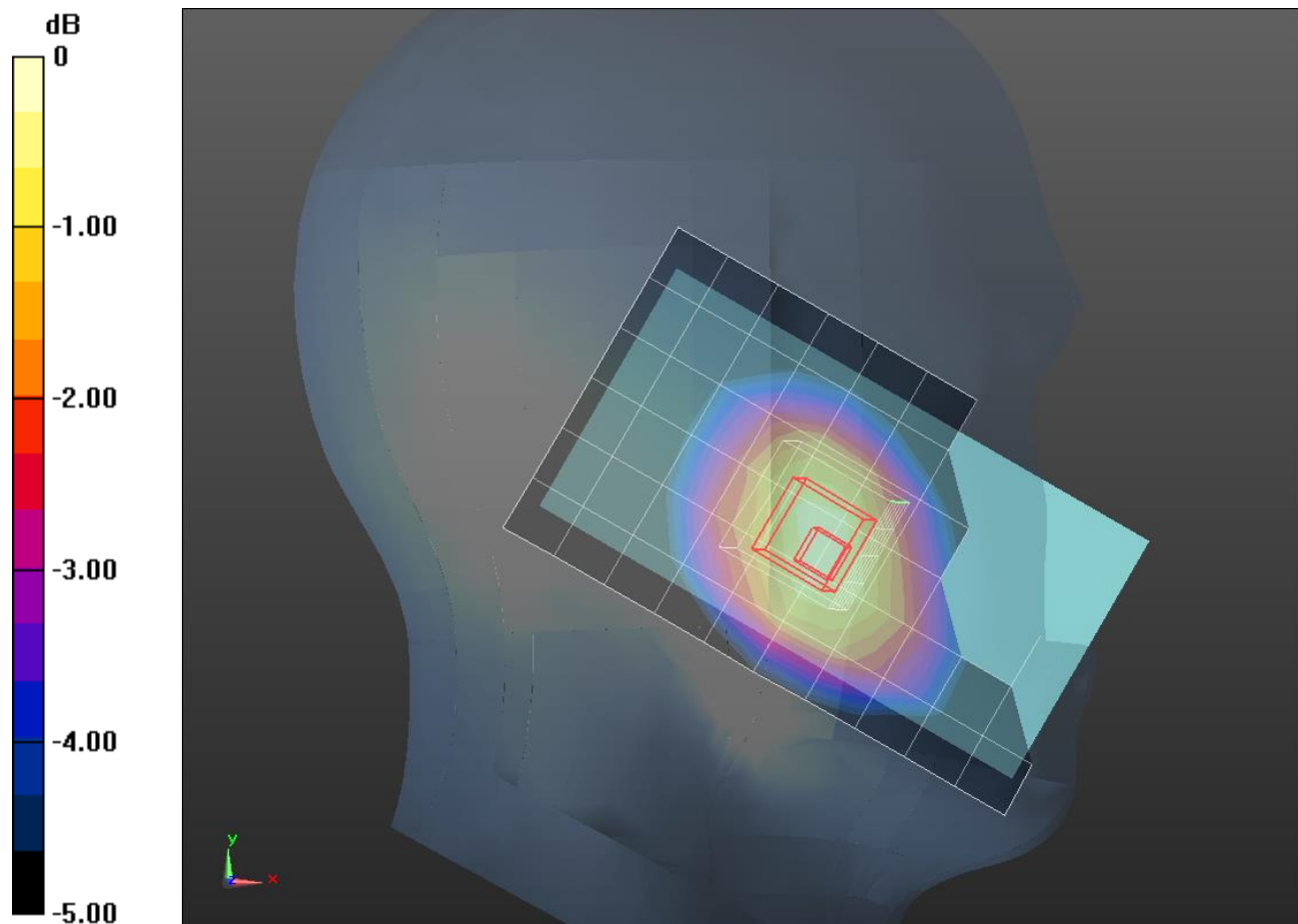
Frequency: 836.5 MHz; Duty Cycle: 1:1; Room Ambient Temperature: 24.0°C; Liquid Temperature: 23.0°C
 Medium parameters used (interpolated): $f = 836.5$ MHz; $\sigma = 0.922$ S/m; $\epsilon_r = 40.984$; $\rho = 1000$ kg/m³

DASY5 Configuration:

- Area Scan Setting: Find Secondary Maximum Within: 2.0 dB and with a peak SAR value greater than 0.0012W/kg
- Electronics: DAE4 Sn1468; Calibrated: 2015-09-15
- Probe: EX3DV4 - SN7376; ConvF(9.99, 9.99, 9.99); Calibrated: 2015-09-02;
- Sensor-Surface: 2mm (Mechanical Surface Detection)
- Phantom: SAM (20deg probe tilt) with CRP v5.0(Right); Type: QD000P40CD; Serial: TP:1846

LHS/Touch_QPSK RB 1/49 ch20525/Area Scan (7x11x1): Measurement grid: dx=15mm, dy=15mm
 Maximum value of SAR (measured) = 0.244 W/kg

LHS/Touch_QPSK RB 1/49 ch20525/Zoom Scan (5x5x7)/Cube 0: Measurement grid: dx=8mm, dy=8mm, dz=5mm
 Reference Value = 16.89 V/m; Power Drift = -0.03 dB
 Peak SAR (extrapolated) = 0.311 W/kg
SAR(1 g) = 0.231 W/kg; SAR(10 g) = 0.173 W/kg
 Maximum value of SAR (measured) = 0.272 W/kg



0 dB = 0.272 W/kg = -5.65 dBW/kg

LTE Band V

Frequency: 836.5 MHz; Duty Cycle: 1:1; Room Ambient Temperature: 24.0°C; Liquid Temperature: 23.0°C
 Medium parameters used (interpolated): $f = 836.5$ MHz; $\sigma = 0.999$ S/m; $\epsilon_r = 53.341$; $\rho = 1000$ kg/m³

DASY5 Configuration:

- Area Scan Setting: Find Secondary Maximum Within: 2.0 dB and with a peak SAR value greater than 0.0012W/kg
- Electronics: DAE4 Sn1447; Calibrated: 2015-09-23
- Probe: EX3DV4 - SN7314; ConvF(9.93, 9.93, 9.93); Calibrated: 2015-09-25;
- Sensor-Surface: 2mm (Mechanical Surface Detection)
- Phantom: Triple Flat Phantom 5.1C; Type: QD 000 P51 CA; Serial: xxxx

Rear/QPSK RB 1/49 ch20525 2/Area Scan (15x9x1): Measurement grid: dx=12mm, dy=12mm
 Maximum value of SAR (measured) = 0.373 W/kg

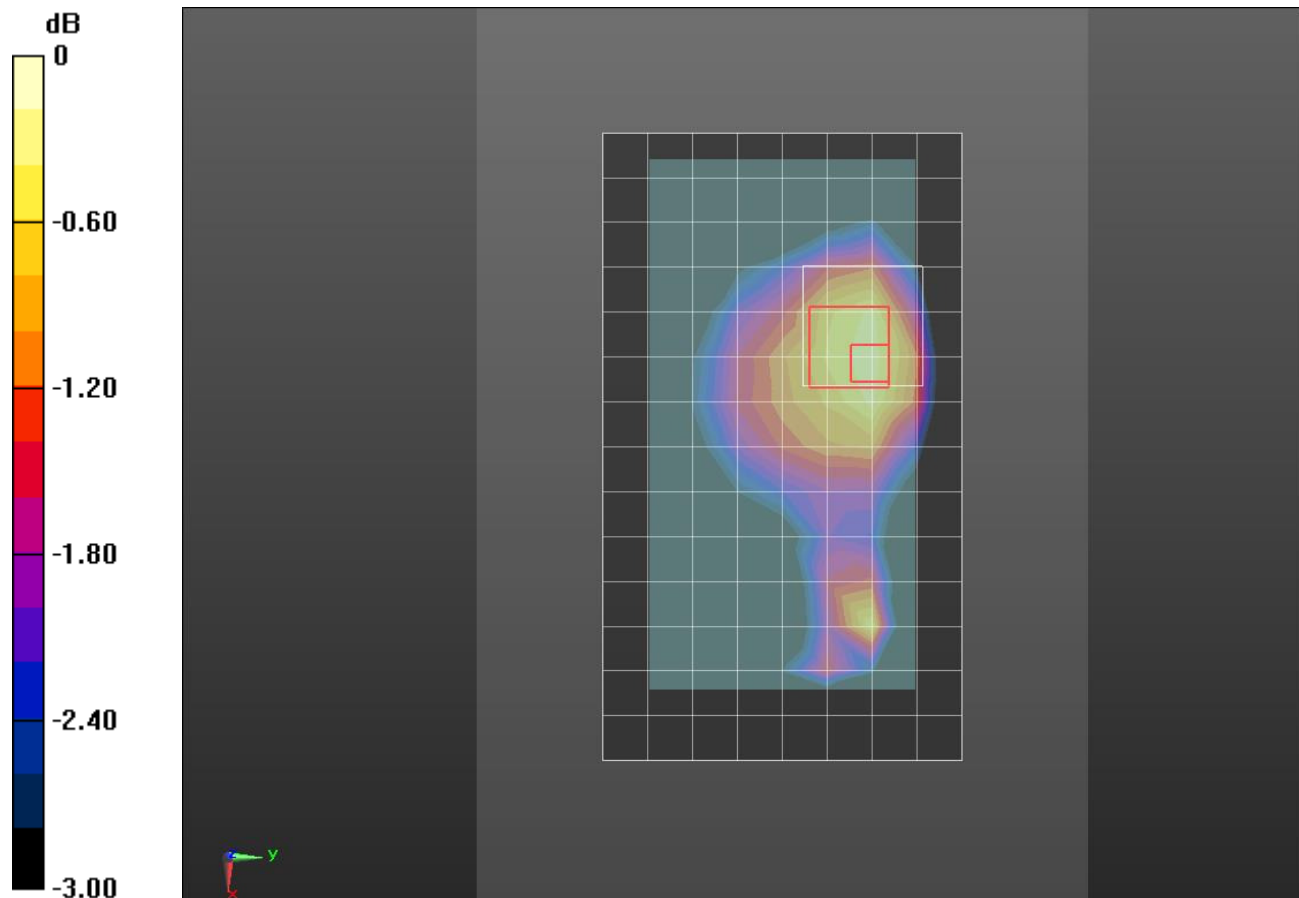
Rear/QPSK RB 1/49 ch20525 2/Zoom Scan 2 2 (5x5x7)/Cube 0: Measurement grid: dx=8mm, dy=8mm, dz=5mm

Reference Value = 20.12 V/m; Power Drift = 0.12 dB

Peak SAR (extrapolated) = 0.458 W/kg

SAR(1 g) = 0.333 W/kg; SAR(10 g) = 0.245 W/kg

Maximum value of SAR (measured) = 0.394 W/kg



0 dB = 0.394 W/kg = -4.05 dBW/kg

Wi-Fi 2.4GHz

Frequency: 2412 MHz; Duty Cycle: 1:1; Room Ambient Temperature: 24.0°C; Liquid Temperature: 23.0°C
 Medium parameters used (interpolated): $f = 2412 \text{ MHz}$; $\sigma = 1.788 \text{ S/m}$; $\epsilon_r = 38.283$; $\rho = 1000 \text{ kg/m}^3$

DASY5 Configuration:

- Area Scan Setting: Find Secondary Maximum Within: 2.0 dB and with a peak SAR value greater than 0.0012W/kg
- Electronics: DAE4 Sn1447; Calibrated: 2015-09-23
- Probe: EX3DV4 - SN7314; ConvF(7.18, 7.18, 7.18); Calibrated: 2015-09-25;
- Sensor-Surface: 2mm (Mechanical Surface Detection)
- Phantom: SAM (20deg probe tilt) with CRP v5.0(Right); Type: QD000P40CD; Serial: TP:xxxx

LHS/Touch_802.11b_ch 1/Area Scan (9x14x1): Measurement grid: dx=12mm, dy=12mm

Maximum value of SAR (measured) = 0.502 W/kg

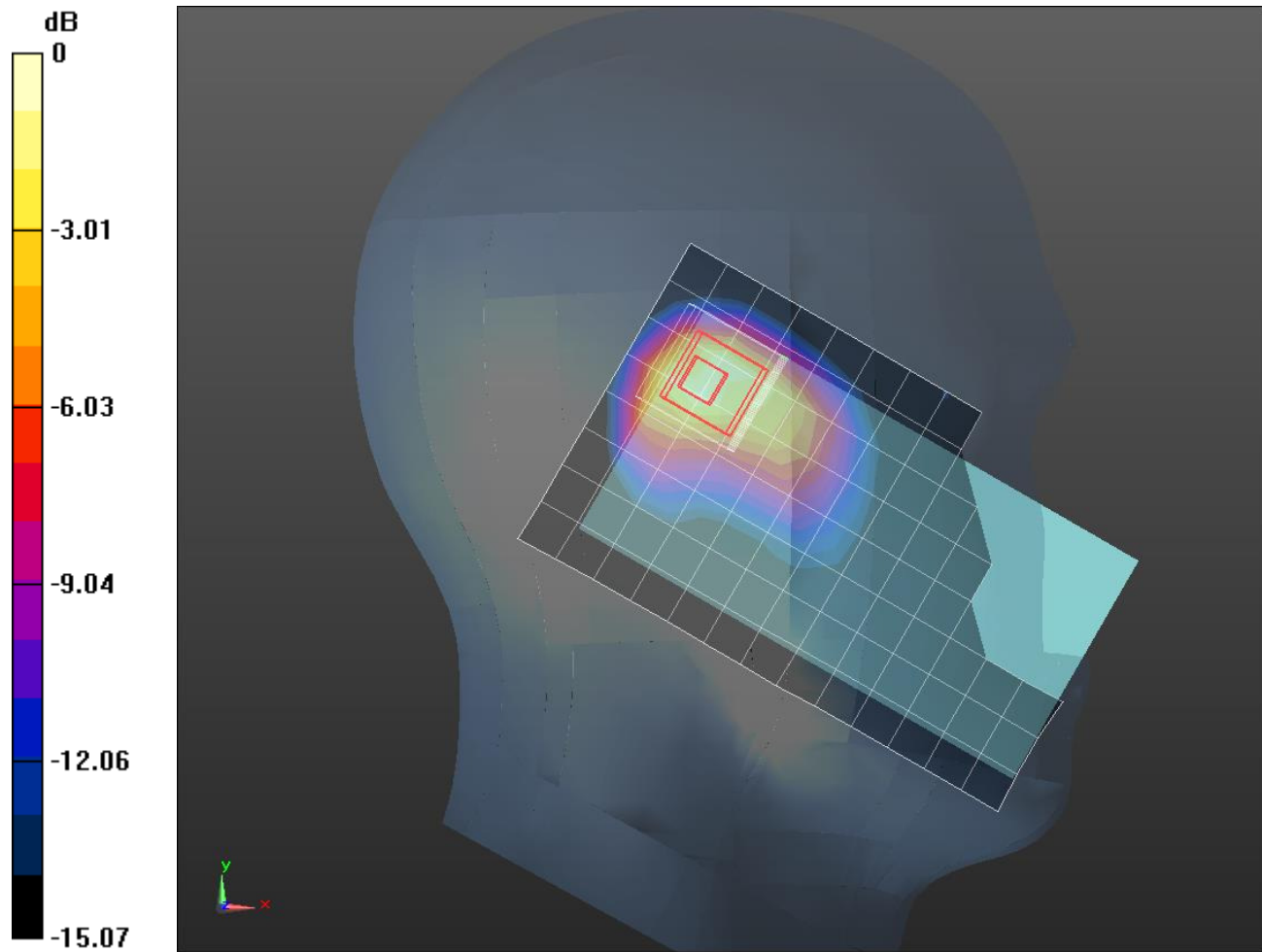
LHS/Touch_802.11b_ch 1/Zoom Scan (7x7x7)/Cube 0: Measurement grid: dx=5mm, dy=5mm, dz=5mm

Reference Value = 17.47 V/m; Power Drift = 0.01 dB

Peak SAR (extrapolated) = 0.894 W/kg

SAR(1 g) = 0.387 W/kg; SAR(10 g) = 0.178 W/kg

Maximum value of SAR (measured) = 0.597 W/kg



0 dB = 0.597 W/kg = -2.24 dBW/kg

Wi-Fi 2.4GHz

Frequency: 2412 MHz; Duty Cycle: 1:1; Room Ambient Temperature: 24.0°C; Liquid Temperature: 23.0°C
 Medium parameters used (interpolated): $f = 2412$ MHz; $\sigma = 1.872$ S/m; $\epsilon_r = 51.086$; $\rho = 1000$ kg/m³

DASY5 Configuration:

- Area Scan Setting: Find Secondary Maximum Within: 2.0 dB and with a peak SAR value greater than 0.0012W/kg
- Electronics: DAE4 Sn1447; Calibrated: 2015-09-23
- Probe: EX3DV4 - SN7314; ConvF(7.28, 7.28, 7.28); Calibrated: 2015-09-25;
- Sensor-Surface: 2mm (Mechanical Surface Detection)
- Phantom: ELI v6.0; Type: QDOVA003AA; Serial: TP:xxxx

Front/802.11b_ch 1/Area Scan (8x14x1): Measurement grid: dx=12mm, dy=12mm

Maximum value of SAR (measured) = 0.233 W/kg

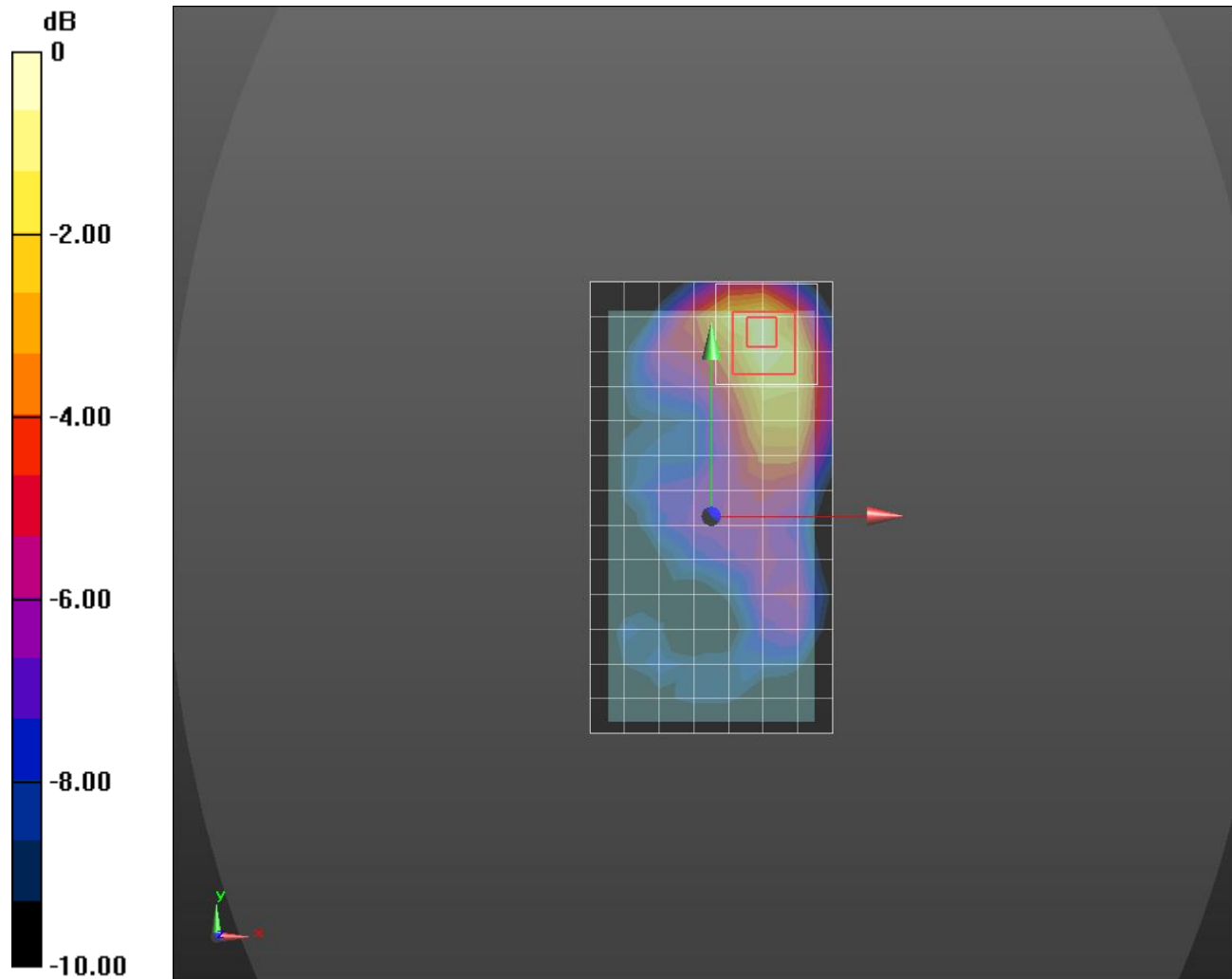
Front/802.11b_ch 1/Zoom Scan (8x8x7)/Cube 0: Measurement grid: dx=5mm, dy=5mm, dz=5mm

Reference Value = 5.934 V/m; Power Drift = -0.08 dB

Peak SAR (extrapolated) = 0.347 W/kg

SAR(1 g) = 0.177 W/kg; SAR(10 g) = 0.092 W/kg

Maximum value of SAR (measured) = 0.260 W/kg



0 dB = 0.260 W/kg = -5.85 dBW/kg