

20151214_SystemPerformanceCheck-D2450V2 SN 960

Frequency: 2450 MHz; Duty Cycle: 1:1; Room Ambient Temperature: 24.0°C; Liquid Temperature: 23.0°C

Medium parameters used: $f = 2450$ MHz; $\sigma = 1.863$ S/m; $\epsilon_r = 40.846$; $\rho = 1000$ kg/m³

DASY5 Configuration:

- Area Scan Setting: Find Secondary Maximum Within: 2.0 dB and with a peak SAR value greater than 0.0012W/kg
- Averaged Fast SAR: Polynomial fit
- Electronics: DAE4 Sn1447; Calibrated: 2015-09-23
- Probe: EX3DV4 - SN7314; ConvF(7.18, 7.18, 7.18); Calibrated: 2015-09-25;
- Sensor-Surface: 4mm (Mechanical Surface Detection)
- Phantom: SAM (20deg probe tilt) with CRP v5.0(Right); Type: QD000P40CD; Serial: TP:xxxx

Head/Pin=100 mW/Area Scan (81x71x1): Interpolated grid: dx=1.200 mm, dy=1.200 mm

Reference Value = 66.91 V/m; Power Drift = -0.04 dB

Fast SAR: SAR(1 g) = 5.31 W/kg; SAR(10 g) = 2.41 W/kg

Maximum value of SAR (interpolated) = 6.09 W/kg

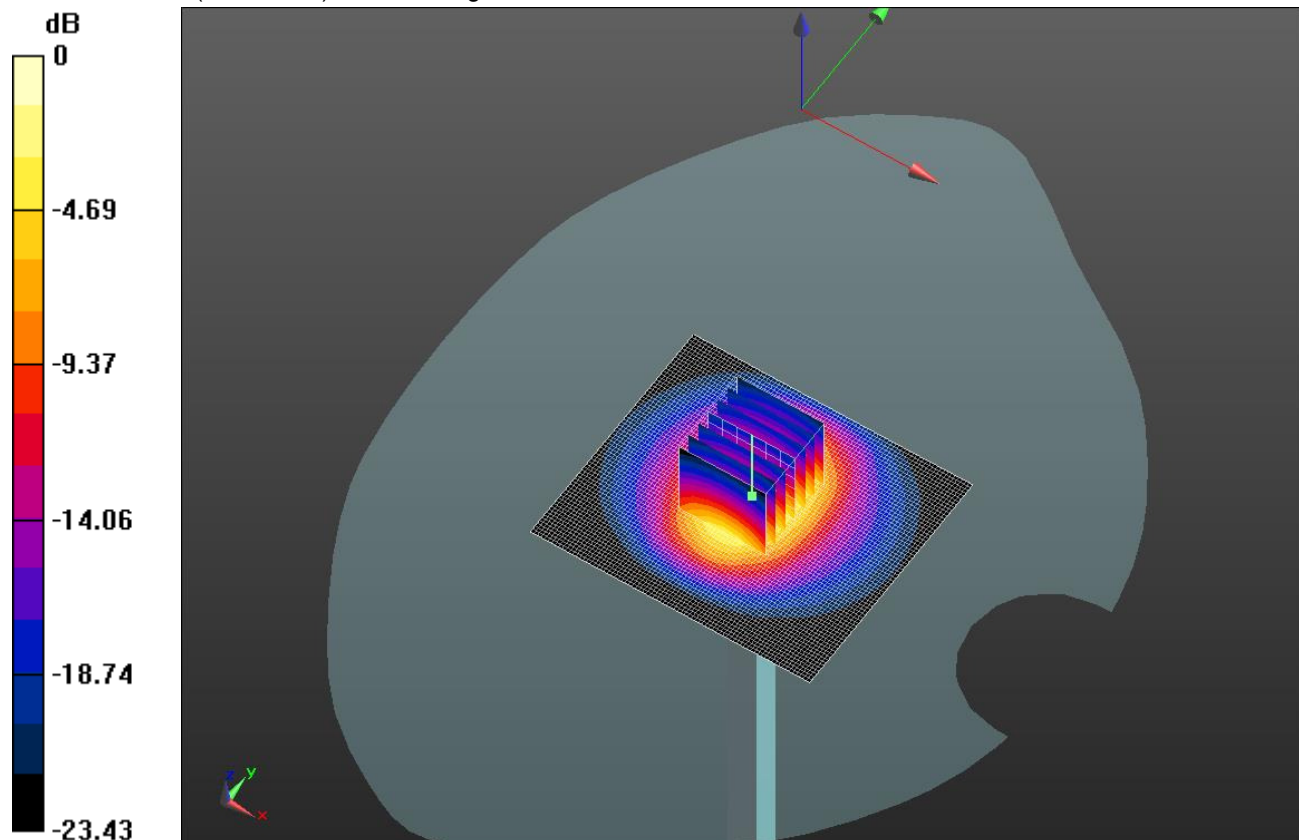
Head/Pin=100 mW/Zoom Scan (7x7x7) (7x7x7)/Cube 0: Measurement grid: dx=5mm, dy=5mm, dz=5mm

Reference Value = 66.91 V/m; Power Drift = -0.04 dB

Peak SAR (extrapolated) = 11.5 W/kg

SAR(1 g) = 5.31 W/kg; SAR(10 g) = 2.43 W/kg

Maximum value of SAR (measured) = 5.94 W/kg

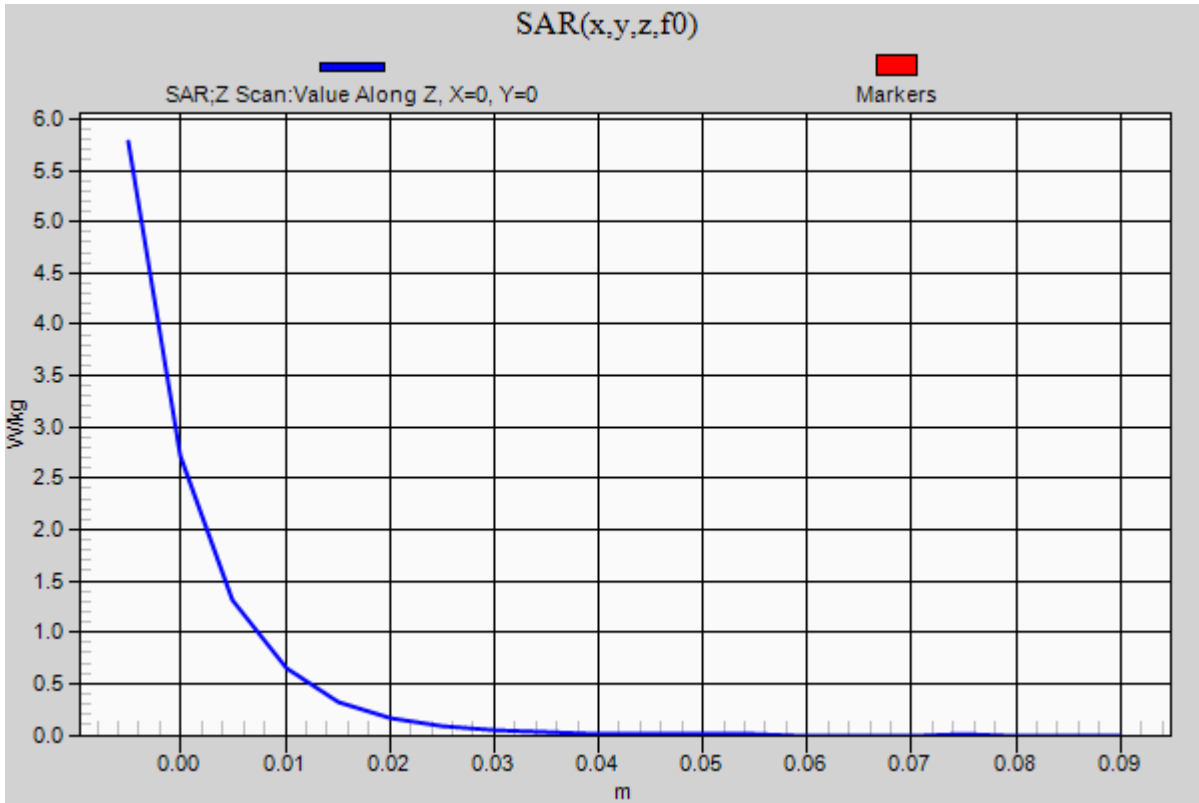


0 dB = 5.94 W/kg = 7.74 dBW/kg

20151214_SystemPerformanceCheck-D2450V2 SN 960

Frequency: 2450 MHz; Duty Cycle: 1:1

Head/Pin=100 mW/Z Scan (1x1x21): Measurement grid: dx=20mm, dy=20mm, dz=5mm
Maximum value of SAR (measured) = 5.78 W/kg



20151211_SystemPerformanceCheck-D835V2 SN 4d194

Frequency: 835 MHz; Duty Cycle: 1:1; Room Ambient Temperature: 24.0°C; Liquid Temperature: 23.0°C

Medium parameters used: $f = 835 \text{ MHz}$; $\sigma = 0.994 \text{ S/m}$; $\epsilon_r = 53.447$; $\rho = 1000 \text{ kg/m}^3$

DASY5 Configuration:

- Area Scan Setting: Find Secondary Maximum Within: 2.0 dB and with a peak SAR value greater than 0.0012W/kg
- Averaged Fast SAR: Polynomial fit
- Electronics: DAE4 Sn1468; Calibrated: 2015-09-15
- Probe: EX3DV4 - SN7376; ConvF(10.07, 10.07, 10.07); Calibrated: 2015-09-02;
- Sensor-Surface: 2mm (Mechanical Surface Detection)
- Phantom: Triple Flat Phantom 5.1C; Type: QD 000 P51 CA; Serial: 1166

Body/Pin=100 mW/Area Scan (61x121x1): Interpolated grid: dx=1.500 mm, dy=1.500 mm

Reference Value = 36.54 V/m; Power Drift = -0.00 dB

Fast SAR: SAR(1 g) = 1.03 W/kg; SAR(10 g) = 0.691 W/kg

Maximum value of SAR (interpolated) = 1.27 W/kg

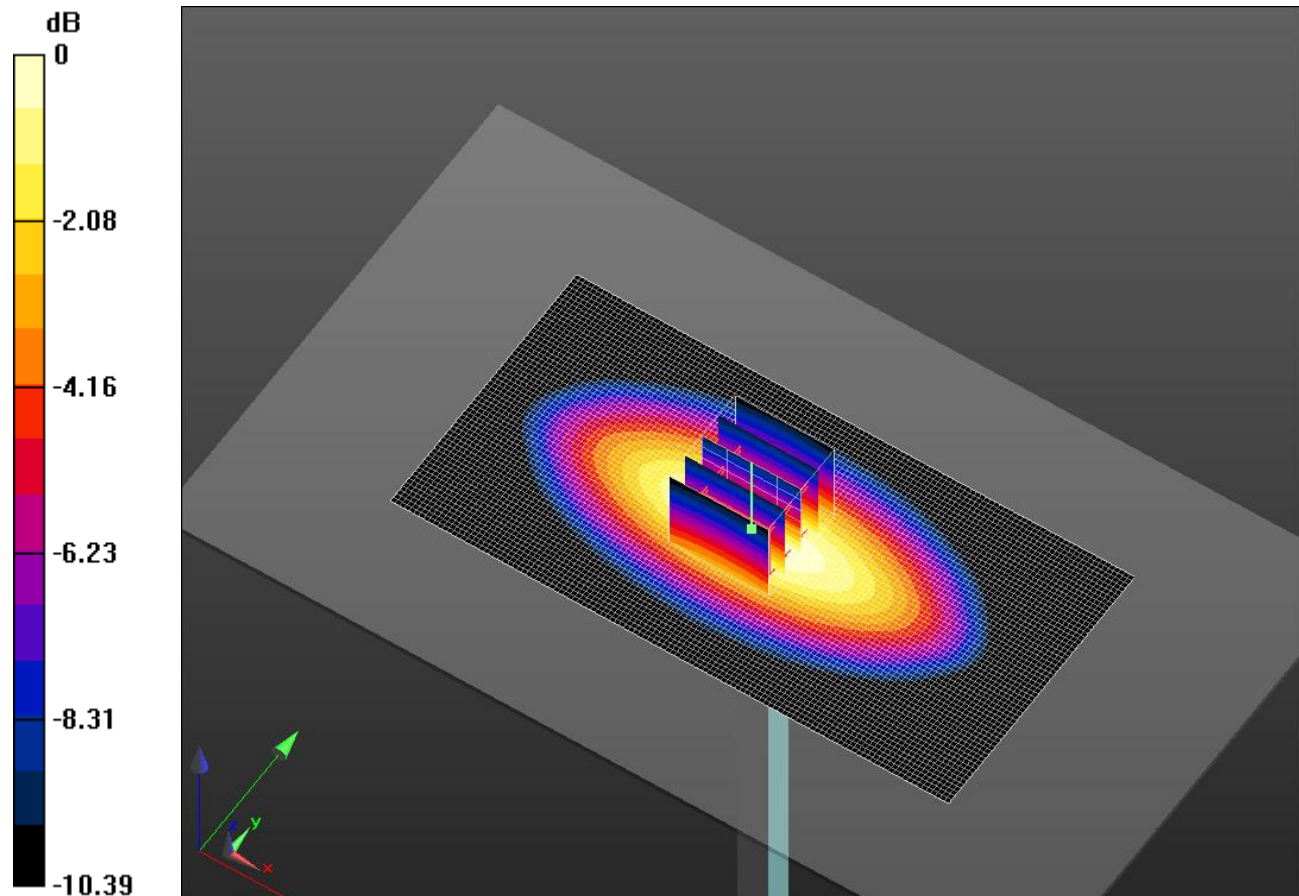
Body/Pin=100 mW/Zoom Scan (5x5x7)/Cube 0: Measurement grid: dx=8mm, dy=8mm, dz=5mm

Reference Value = 36.54 V/m; Power Drift = -0.00 dB

Peak SAR (extrapolated) = 1.47 W/kg

SAR(1 g) = 1.01 W/kg; SAR(10 g) = 0.664 W/kg

Maximum value of SAR (measured) = 1.27 W/kg

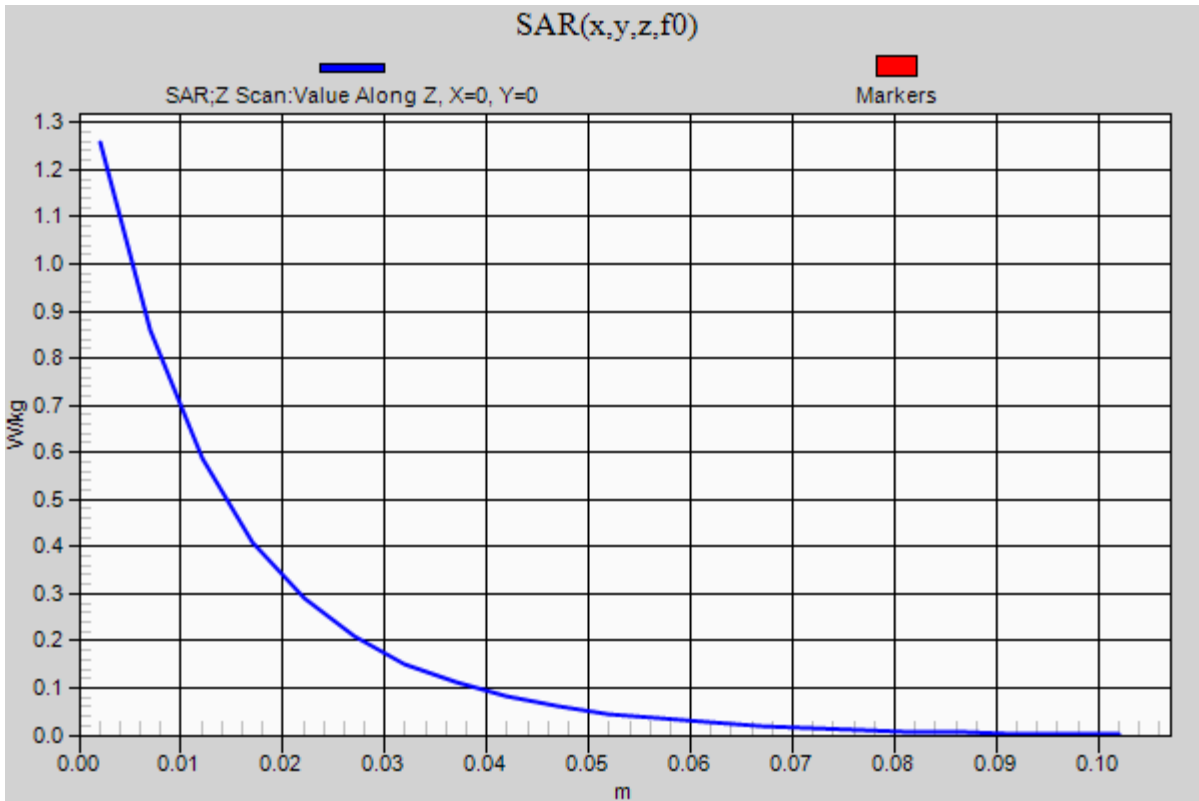


0 dB = 1.27 W/kg = 1.04 dBW/kg

20151211_SystemPerformanceCheck-D835V2 SN 4d194

Frequency: 835 MHz; Duty Cycle: 1:1

Body/Pin=100 mW/Z Scan (1x1x21): Measurement grid: dx=20mm, dy=20mm, dz=5mm
Maximum value of SAR (measured) = 1.26 W/kg



20151212_SystemPerformanceCheck-D1900V2 SN 5d199

Frequency: 1900 MHz; Duty Cycle: 1:1; Room Ambient Temperature: 24.0°C; Liquid Temperature: 23.0°C

Medium parameters used: $f = 1900 \text{ MHz}$; $\sigma = 1.452 \text{ S/m}$; $\epsilon_r = 39.552$; $\rho = 1000 \text{ kg/m}^3$

DASY5 Configuration:

- Area Scan Setting: Find Secondary Maximum Within: 2.0 dB and with a peak SAR value greater than 0.0012W/kg
- Averaged Fast SAR: Polynomial fit
- Electronics: DAE4 Sn1494; Calibrated: 2015-11-11
- Probe: EX3DV4 - SN7330; ConvF(8.07, 8.07, 8.07); Calibrated: 2015-02-12;
- Sensor-Surface: 2mm (Mechanical Surface Detection)
- Phantom: SAM Phantom CRP v5.0(Right); Type: QD000P40CD; Serial: TP:1855

Head/Pin=100 mW/Area Scan (61x61x1): Interpolated grid: dx=1.500 mm, dy=1.500 mm

Reference Value = 64.33 V/m; Power Drift = -0.03 dB

Fast SAR: SAR(1 g) = 4.2 W/kg; SAR(10 g) = 2.16 W/kg

Maximum value of SAR (interpolated) = 5.83 W/kg

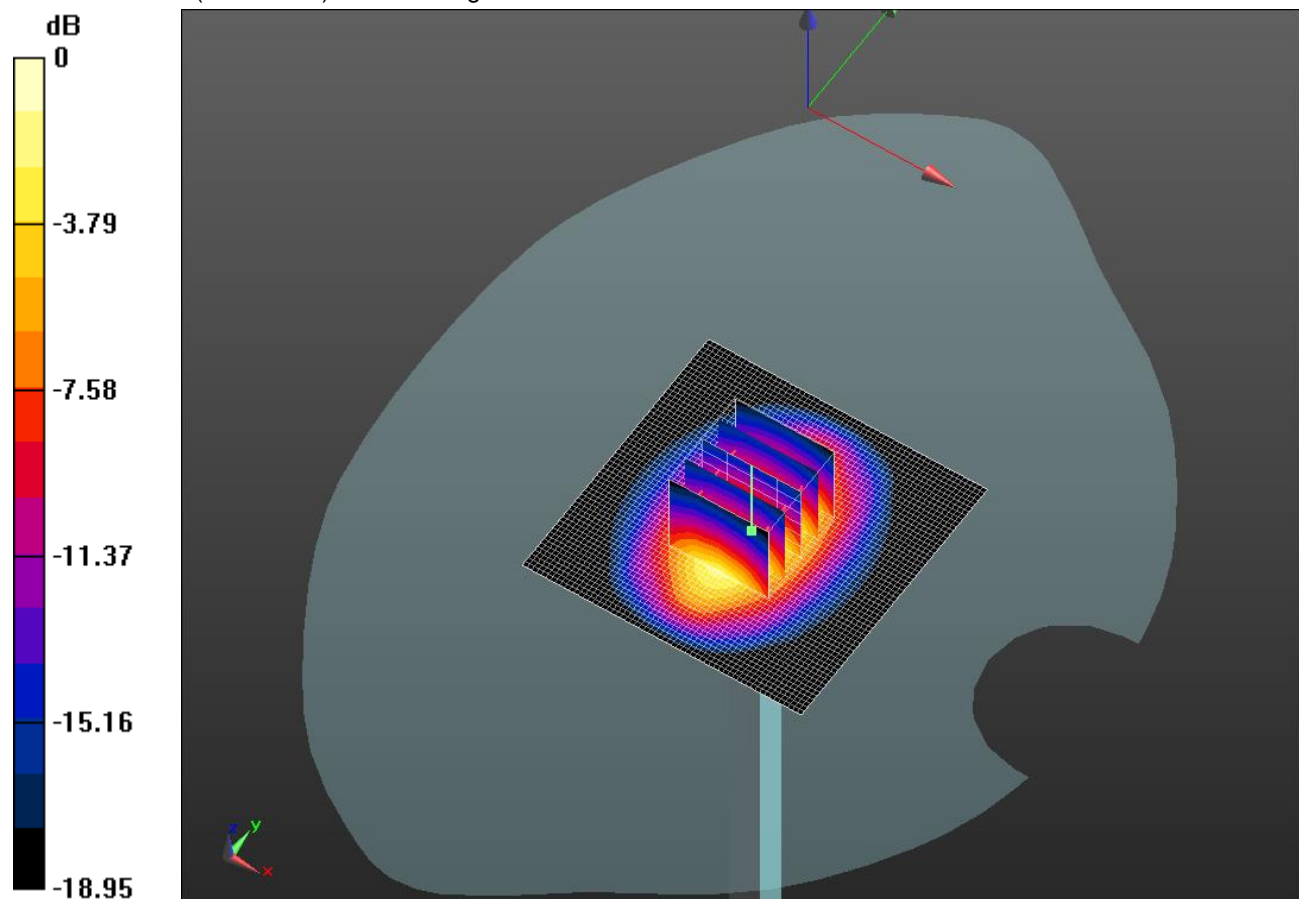
Head/Pin=100 mW/Zoom Scan (5x5x7)/Cube 0: Measurement grid: dx=8mm, dy=8mm, dz=5mm

Reference Value = 64.33 V/m; Power Drift = -0.03 dB

Peak SAR (extrapolated) = 7.51 W/kg

SAR(1 g) = 3.96 W/kg; SAR(10 g) = 2.02 W/kg

Maximum value of SAR (measured) = 5.81 W/kg



0 dB = 5.81 W/kg = 7.64 dBW/kg

20151212_SystemPerformanceCheck-D1900V2 SN 5d199

Frequency: 1900 MHz; Duty Cycle: 1:1

Head/Pin=100 mW/Z Scan (1x1x21): Measurement grid: dx=20mm, dy=20mm, dz=5mm
Maximum value of SAR (measured) = 5.80 W/kg

