

## 20151214\_SystemPerformanceCheck-D2450V2 SN 960

Frequency: 2450 MHz; Duty Cycle: 1:1; Room Ambient Temperature: 24.0°C; Liquid Temperature: 23.0°C  
 Medium parameters used:  $f = 2450$  MHz;  $\sigma = 1.863$  S/m;  $\epsilon_r = 40.846$ ;  $\rho = 1000$  kg/m<sup>3</sup>

DASY5 Configuration:

- Area Scan Setting: Find Secondary Maximum Within: 2.0 dB and with a peak SAR value greater than 0.0012W/kg
- Averaged Fast SAR: Polynomial fit
- Electronics: DAE4 Sn1447; Calibrated: 2015-09-23
- Probe: EX3DV4 - SN7314; ConvF(7.18, 7.18, 7.18); Calibrated: 2015-09-25;
- Sensor-Surface: 4mm (Mechanical Surface Detection)
- Phantom: SAM (20deg probe tilt) with CRP v5.0(Right); Type: QD000P40CD; Serial: TP:xxxx

**Head/Pin=100 mW/Area Scan (81x71x1):** Interpolated grid: dx=1.200 mm, dy=1.200 mm

Reference Value = 66.91 V/m; Power Drift = -0.04 dB

**Fast SAR: SAR(1 g) = 5.31 W/kg; SAR(10 g) = 2.41 W/kg**

Maximum value of SAR (interpolated) = 6.09 W/kg

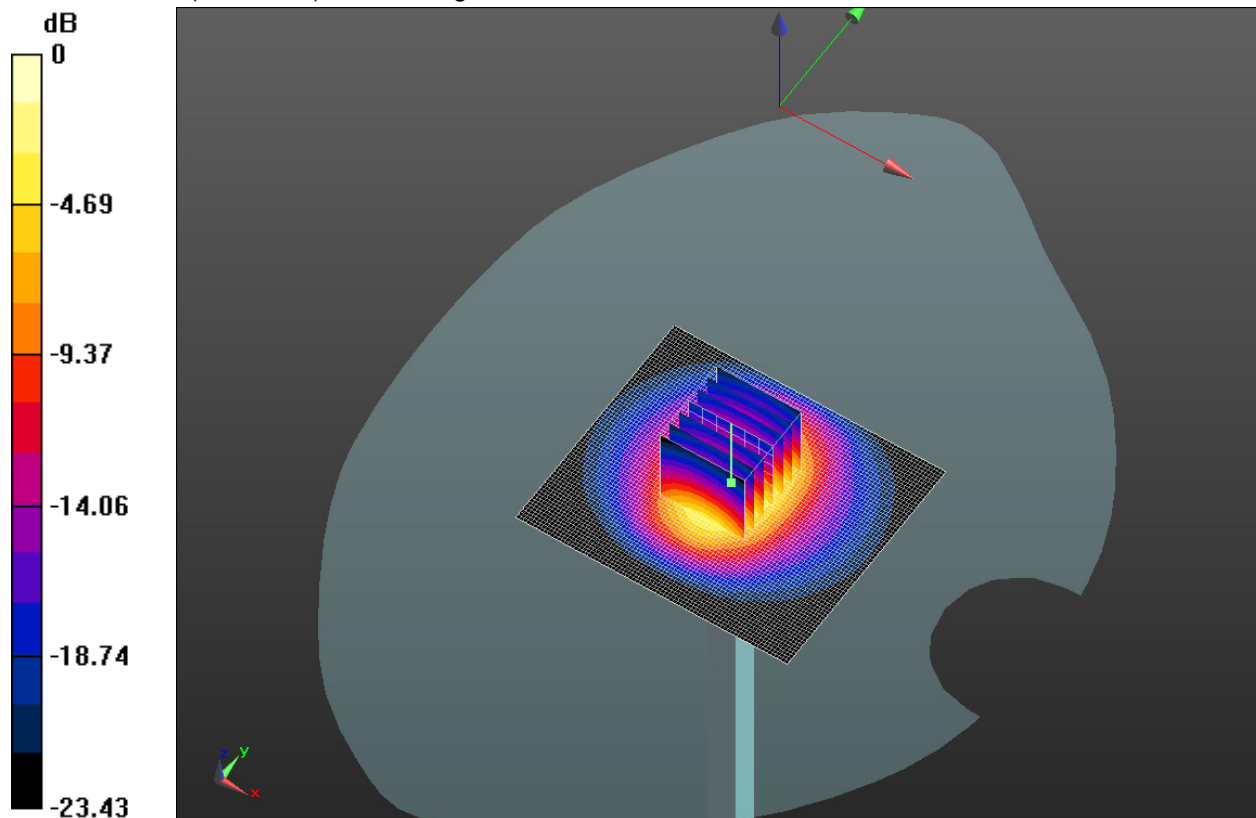
**Head/Pin=100 mW/Zoom Scan (7x7x7) (7x7x7)/Cube 0:** Measurement grid: dx=5mm, dy=5mm, dz=5mm

Reference Value = 66.91 V/m; Power Drift = -0.04 dB

Peak SAR (extrapolated) = 11.5 W/kg

**SAR(1 g) = 5.31 W/kg; SAR(10 g) = 2.43 W/kg**

Maximum value of SAR (measured) = 5.94 W/kg

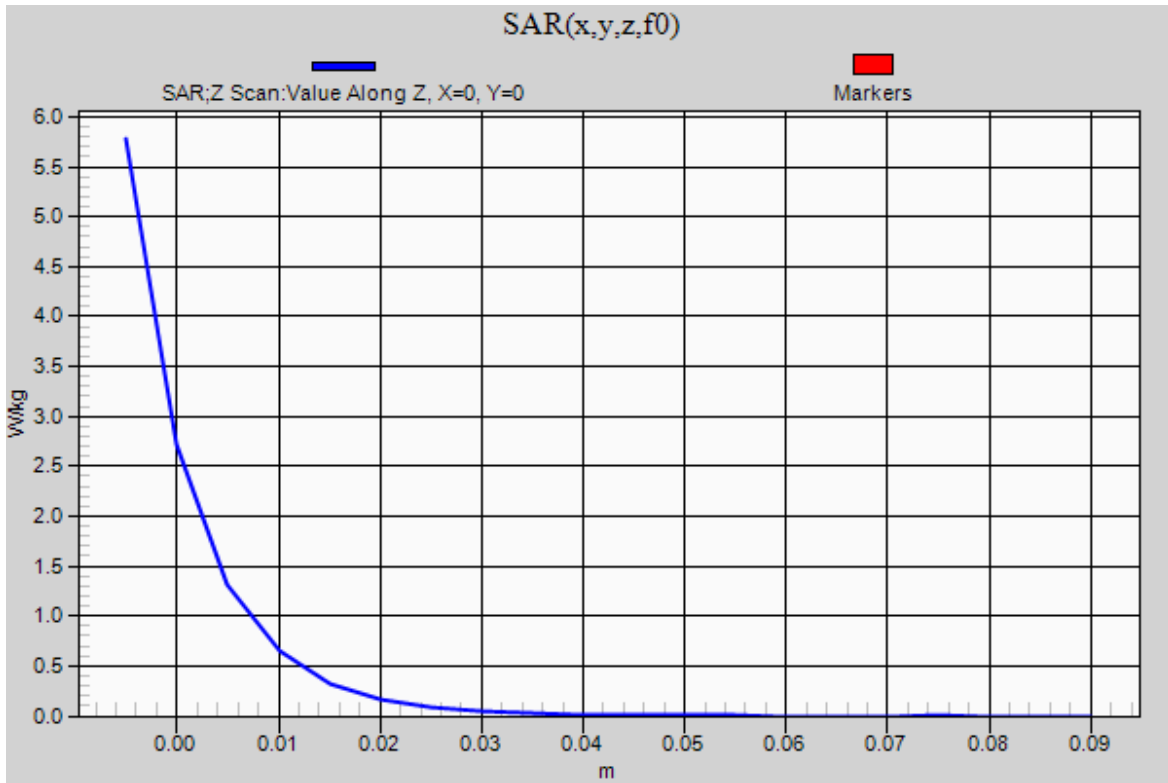


0 dB = 5.94 W/kg = 7.74 dBW/kg

### 20151214\_SystemPerformanceCheck-D2450V2 SN 960

Frequency: 2450 MHz; Duty Cycle: 1:1

**Head/Pin=100 mW/Z Scan (1x1x21):** Measurement grid: dx=20mm, dy=20mm, dz=5mm  
Maximum value of SAR (measured) = 5.78 W/kg



## 20151215\_SystemPerformanceCheck-D835V2 SN 4d194

Frequency: 835 MHz; Duty Cycle: 1:1; Room Ambient Temperature: 24.0°C; Liquid Temperature: 23.0°C  
 Medium parameters used:  $f = 835 \text{ MHz}$ ;  $\sigma = 1.007 \text{ S/m}$ ;  $\epsilon_r = 54.227$ ;  $\rho = 1000 \text{ kg/m}^3$

DASY5 Configuration:

- Area Scan Setting: Find Secondary Maximum Within: 2.0 dB and with a peak SAR value greater than 0.0012W/kg
- Averaged Fast SAR: Polynomial fit
- Electronics: DAE4 Sn1468; Calibrated: 2015-09-15
- Probe: EX3DV4 - SN7376; ConvF(10.07, 10.07, 10.07); Calibrated: 2015-09-02;
- Sensor-Surface: 2mm (Mechanical Surface Detection)
- Phantom: Triple Flat Phantom 5.1C; Type: QD 000 P51 CA; Serial: 1166

**Body/Pin=100 mW/Area Scan (61x121x1):** Interpolated grid:  $dx=1.500 \text{ mm}$ ,  $dy=1.500 \text{ mm}$

Reference Value = 36.64 V/m; Power Drift = -0.05 dB

**Fast SAR: SAR(1 g) = 1.04 W/kg; SAR(10 g) = 0.698 W/kg**

Maximum value of SAR (interpolated) = 1.28 W/kg

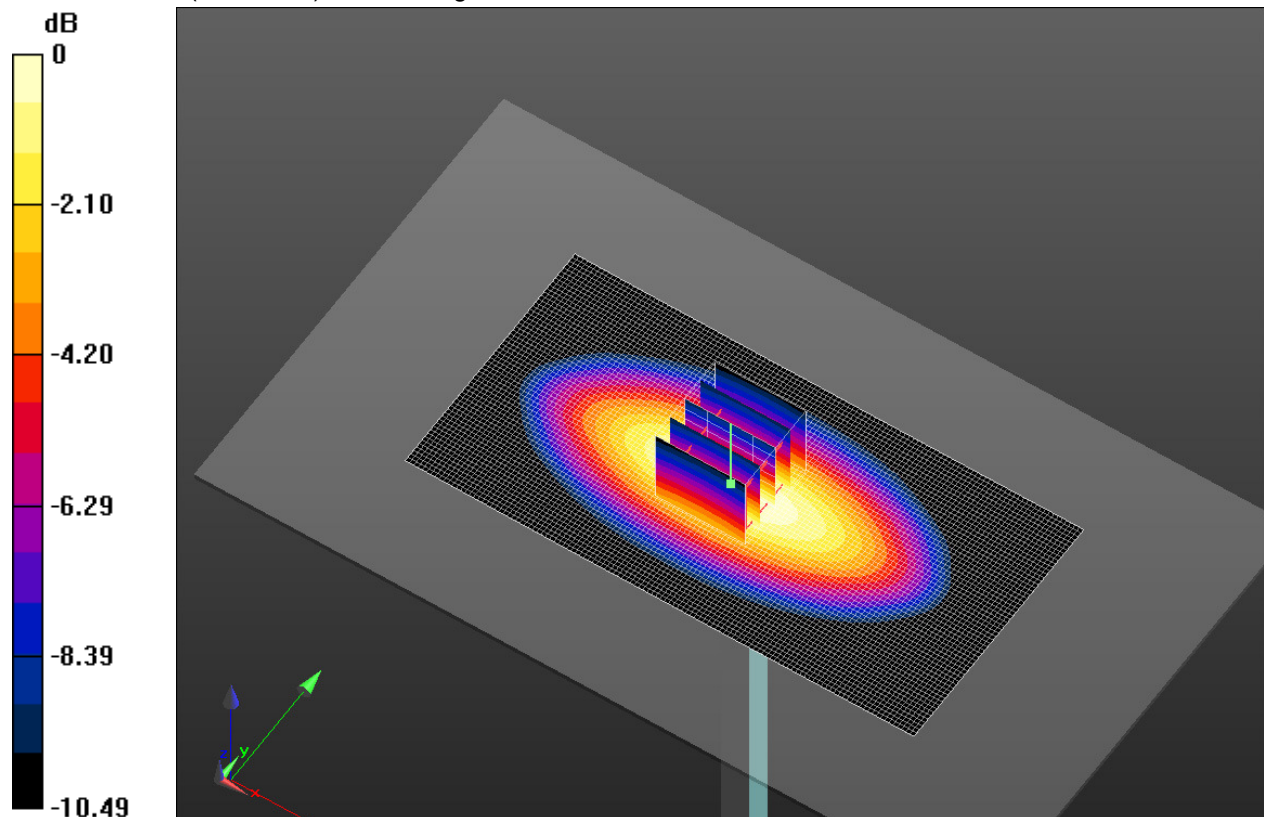
**Body/Pin=100 mW/Zoom Scan (5x5x7)/Cube 0:** Measurement grid:  $dx=8\text{mm}$ ,  $dy=8\text{mm}$ ,  $dz=5\text{mm}$

Reference Value = 36.64 V/m; Power Drift = -0.05 dB

Peak SAR (extrapolated) = 1.48 W/kg

**SAR(1 g) = 1.02 W/kg; SAR(10 g) = 0.670 W/kg**

Maximum value of SAR (measured) = 1.28 W/kg

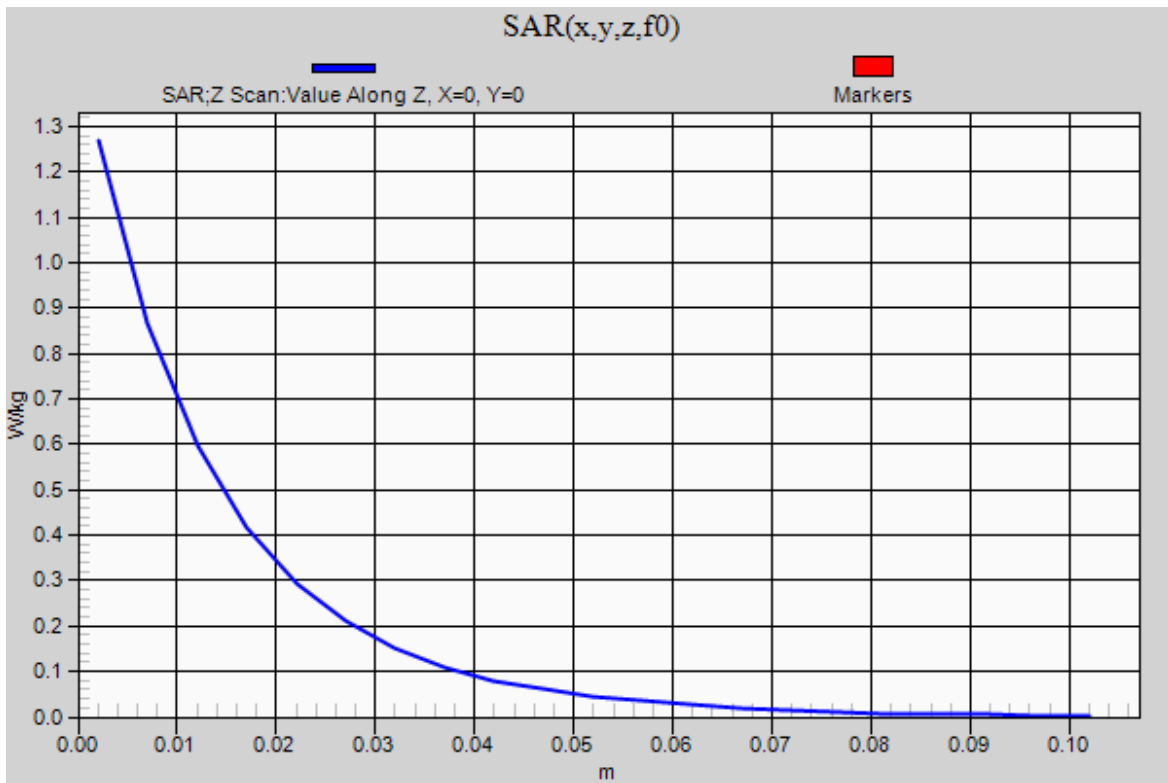


0 dB = 1.28 W/kg = 1.07 dBW/kg

### 20151215\_SystemPerformanceCheck-D835V2 SN 4d194

Frequency: 835 MHz; Duty Cycle: 1:1

**Body/Pin=100 mW/Z Scan (1x1x21):** Measurement grid: dx=20mm, dy=20mm, dz=5mm  
Maximum value of SAR (measured) = 1.27 W/kg



## 20151217\_SystemPerformanceCheck-D1900V2 SN 5d199

Frequency: 1900 MHz; Duty Cycle: 1:1; Room Ambient Temperature: 24.0°C; Liquid Temperature: 23.0°C  
 Medium parameters used:  $f = 1900$  MHz;  $\sigma = 1.454$  S/m;  $\epsilon_r = 39.069$ ;  $\rho = 1000$  kg/m<sup>3</sup>

DASY5 Configuration:

- Area Scan Setting: Find Secondary Maximum Within: 2.0 dB and with a peak SAR value greater than 0.0012W/kg
- Averaged Fast SAR: Polynomial fit
- Electronics: DAE4 Sn1494; Calibrated: 2015-11-11
- Probe: EX3DV4 - SN7330; ConvF(8.07, 8.07, 8.07); Calibrated: 2015-02-12;
- Sensor-Surface: 2mm (Mechanical Surface Detection)
- Phantom: SAM Phantom CRP v5.0(Right); Type: QD000P40CD; Serial: TP:1855

**Head/Pin=100 mW/Area Scan (61x61x1):** Interpolated grid: dx=1.500 mm, dy=1.500 mm

Reference Value = 64.06 V/m; Power Drift = -0.01 dB

**Fast SAR: SAR(1 g) = 4.26 W/kg; SAR(10 g) = 2.2 W/kg**

Maximum value of SAR (interpolated) = 5.95 W/kg

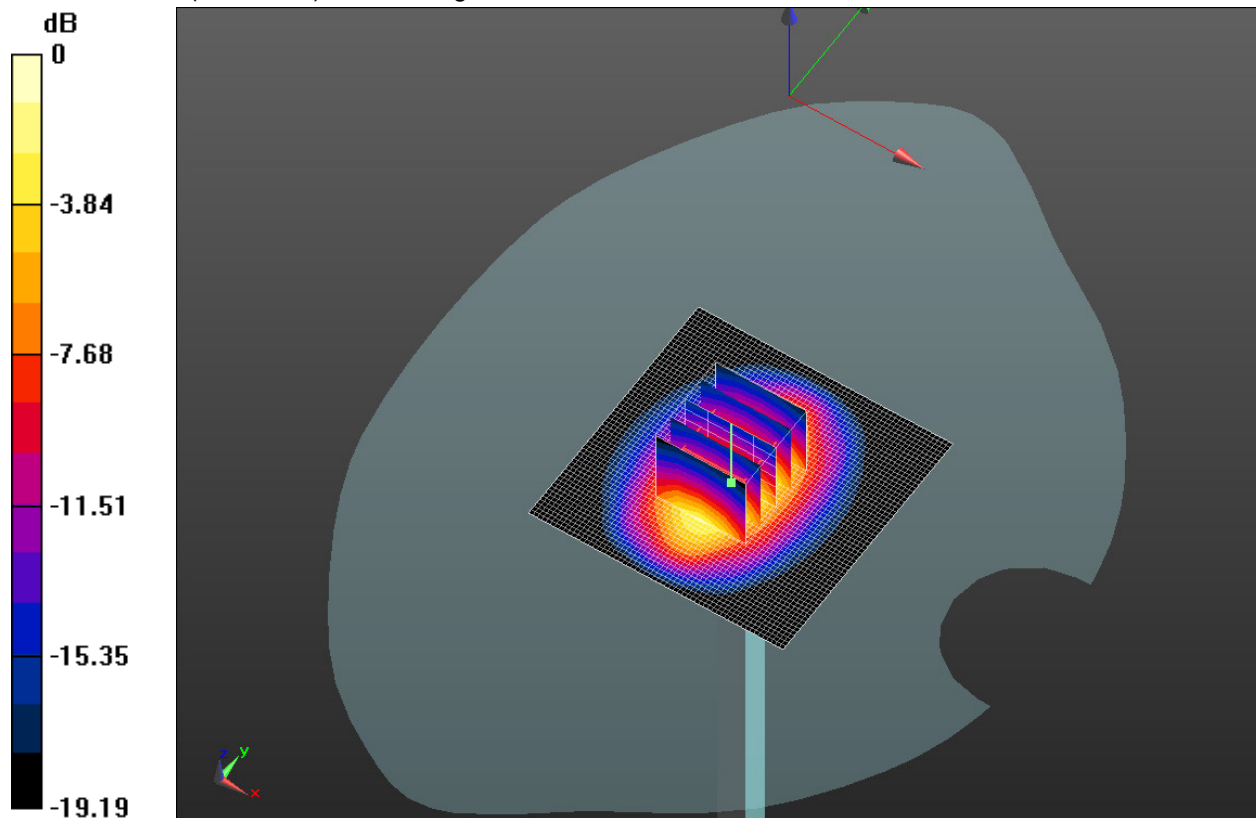
**Head/Pin=100 mW/Zoom Scan (5x5x7)/Cube 0:** Measurement grid: dx=8mm, dy=8mm, dz=5mm

Reference Value = 64.06 V/m; Power Drift = -0.01 dB

Peak SAR (extrapolated) = 7.68 W/kg

**SAR(1 g) = 4.03 W/kg; SAR(10 g) = 2.05 W/kg**

Maximum value of SAR (measured) = 5.90 W/kg



0 dB = 5.90 W/kg = 7.71 dBW/kg

### 20151217\_SystemPerformanceCheck-D1900V2 SN 5d199

Frequency: 1900 MHz; Duty Cycle: 1:1

**Head/Pin=100 mW/Z Scan (1x1x21):** Measurement grid: dx=20mm, dy=20mm, dz=5mm  
Maximum value of SAR (measured) = 5.41 W/kg

