

FCC ID: A3LSMJ260T1





A02 N8

microSD
SIM

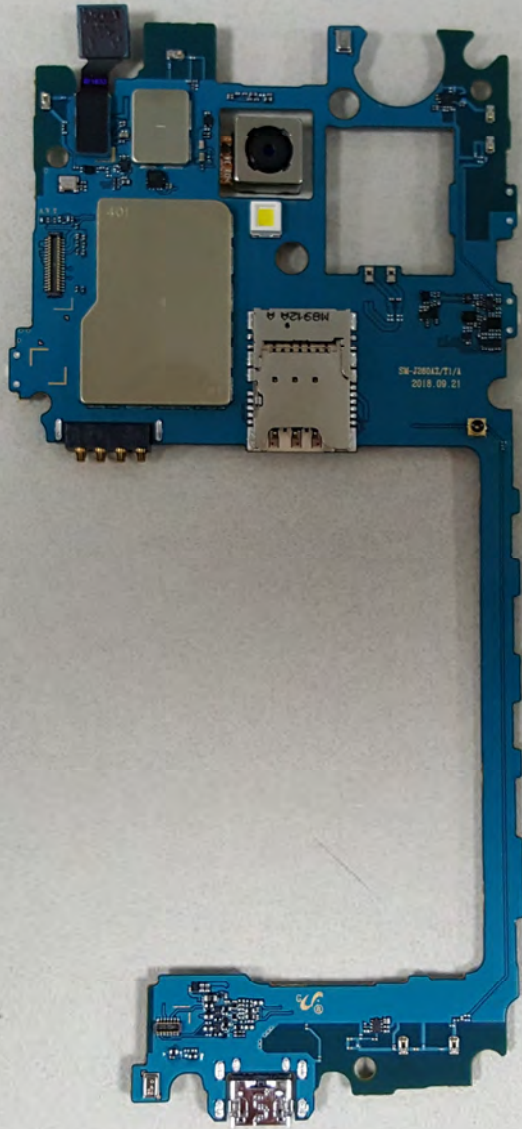
SAMSUNG
MODEL: SM-J260T1
FCC ID: A3LSMJ260T1
RATED: 3.8V 1500mAh
SIM: T80
HW: REV0.1
FOR INFORMATION CALL: 1 800 SANSUNG
1808
IMEI: 352475101000627/7 16GB
MADE IN KOREA

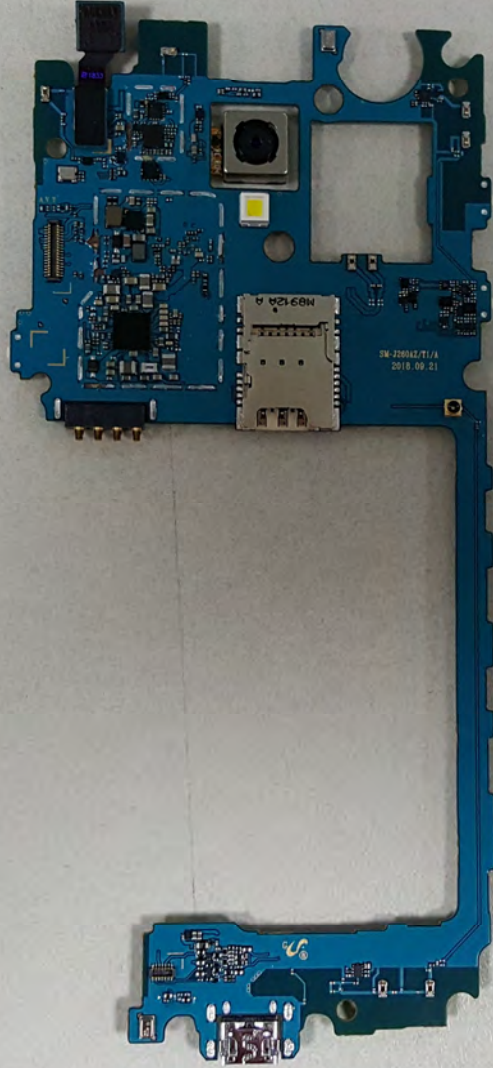
C1-G02
V10-13
N8

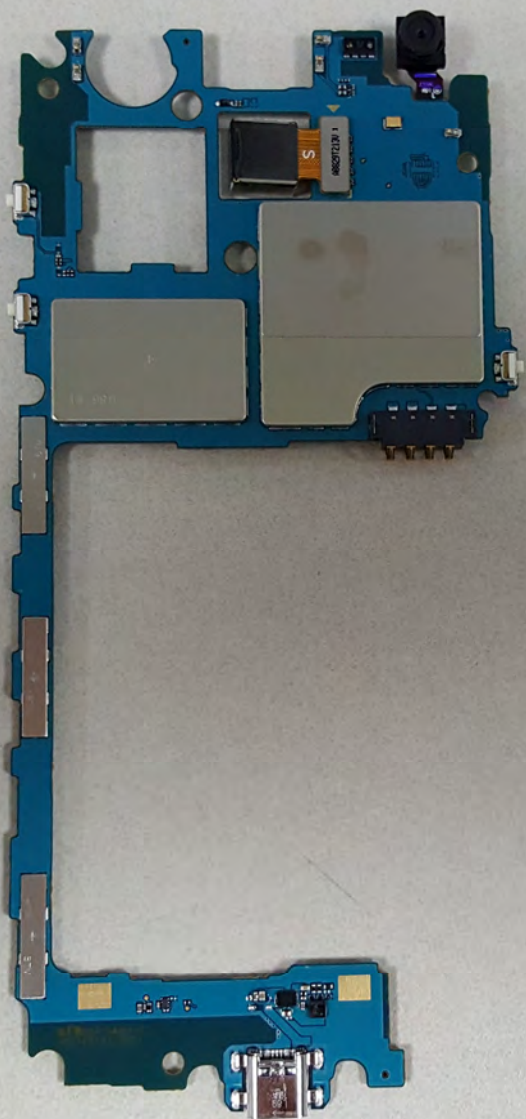


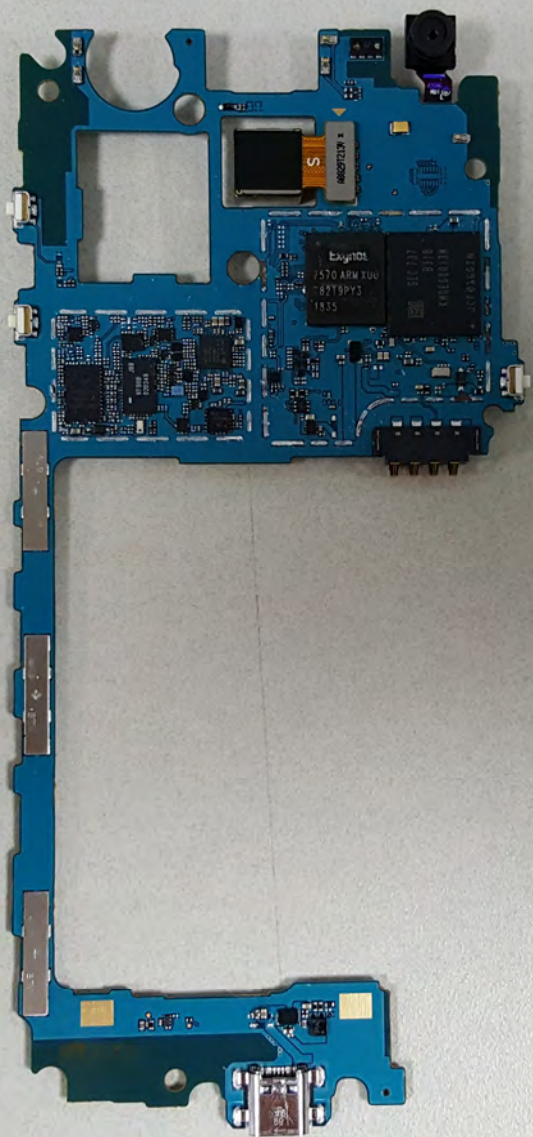
SAMSUNG
MODEL: SM-J260T1
FCC ID: A3LSMJ260T1
RATED: 3.8V  : 1500 mA
SW: TBD
HW: REV.1
FOR INFORMATION CALL: 1 800 SAMSUNG
1808
IMEI: 352475101000627/7 16GB
MADE IN KOREA







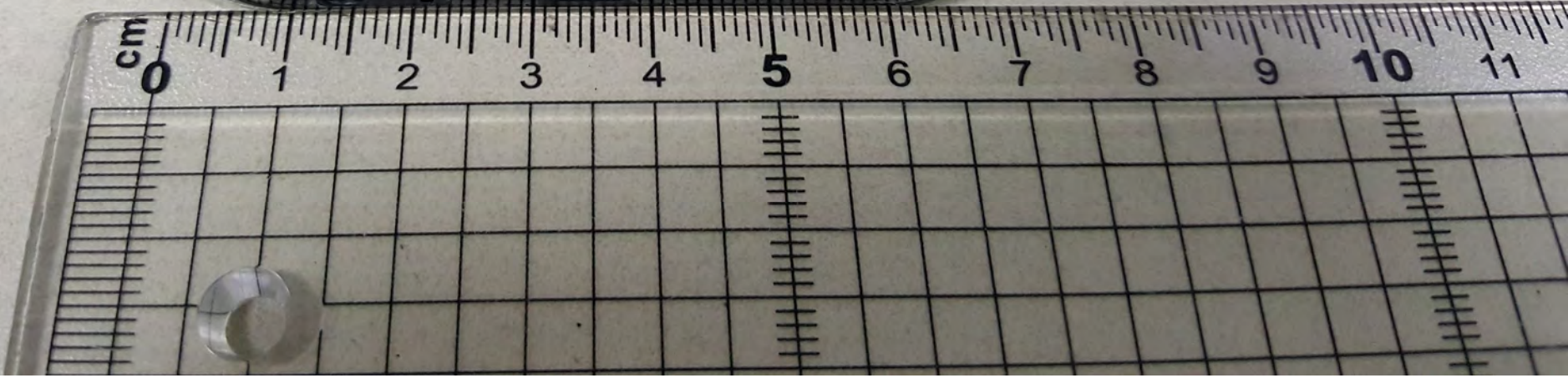




SAMSUNG
MODEL : SM-J260T1
FCC ID : K3LSMJ260T1
RATED : 3.8V : 1500 mA
SW : TBD
HW : REV0.1
FOR INFORMATION CALL : 1 800 SAMSUNG
1808
IMEI : 352475/10/000627/7 16GB
MADE IN KOREA



C1-G02
V10-13
N8

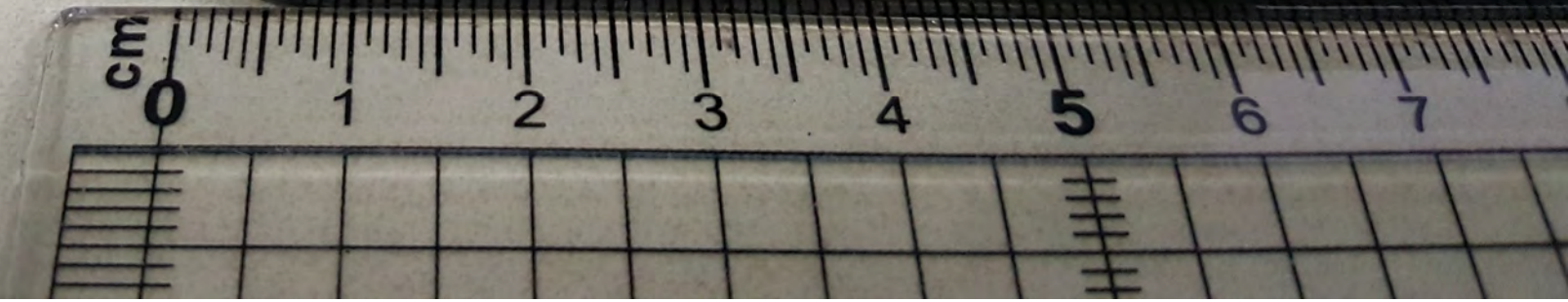




CH-G02
M0-18
N8

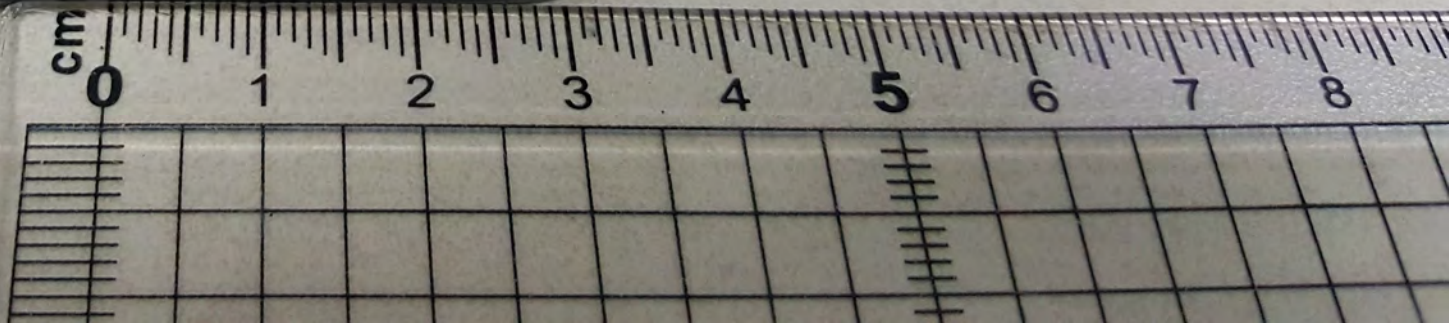
BC

MODEL: SM-J2007
VOLT: 3.7V
CAP: 1500mAh
SERIAL NO.
DATE: 1.8V
PART NO.
FOR INFORMATION CALL: 1-800-SAMSUNG
1608
MFR: 302075-000000077
MADE IN KOREA





SAMSUNG
MODEL : SM-J607S
FCC ID : A43812RA01
PART NO : J607S
REV : 1B0
FOR SERVICE
FOR INFORMATION CALL : 1 800 SAMSUNG
1GB
MADE IN KOREA
BC





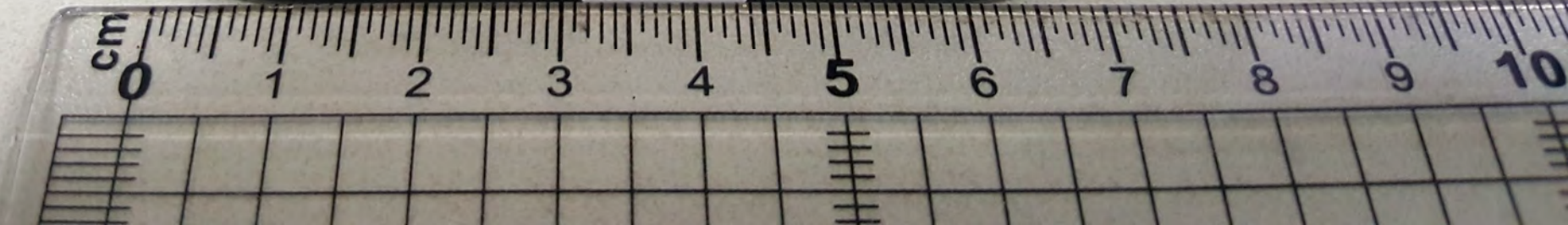
Barcode label with illegible text and a circular logo.

M8912A A

N8

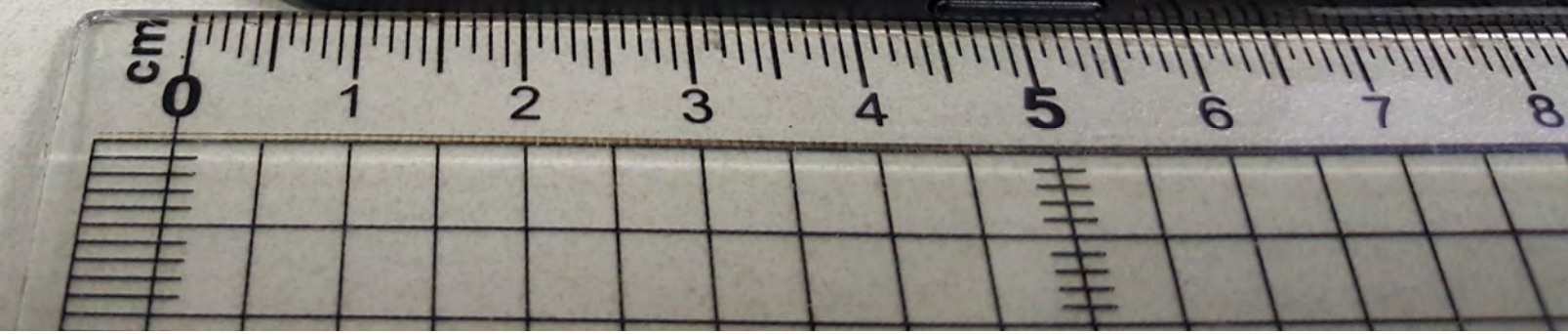
N8 A02

RJG0855M





BC
SAMSUNG SM-J160T1
MODEL : SM-J160T1 : 1500 mAh
FCC ID : A15J160T1
RATED : 3.8V
SW : REV0.1
HW : CORNELL
REVISION CALL : 1-800-SAMSUNG
1605





SAMSUNG
MODEL : SM-J260T1
FCC ID : A3LSMJ260T1
RATED : 3.8V : 1500 mA
SW : TBD
HW : REV0.1
FOR INFORMATION CALL : 1 800 SAMSUNG
1808
IMEI : 35247510/000627/7 16GB
MADE IN KOREA

C1-G02
V10-13
N8





DK181012B18
(D)