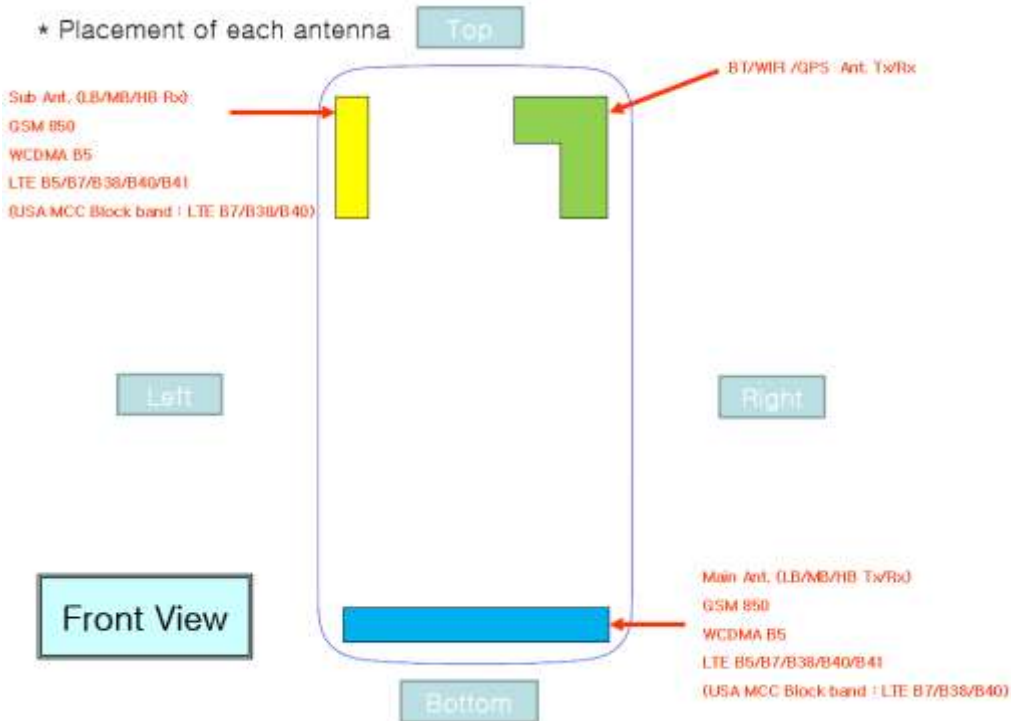


## **Attachment 8.**

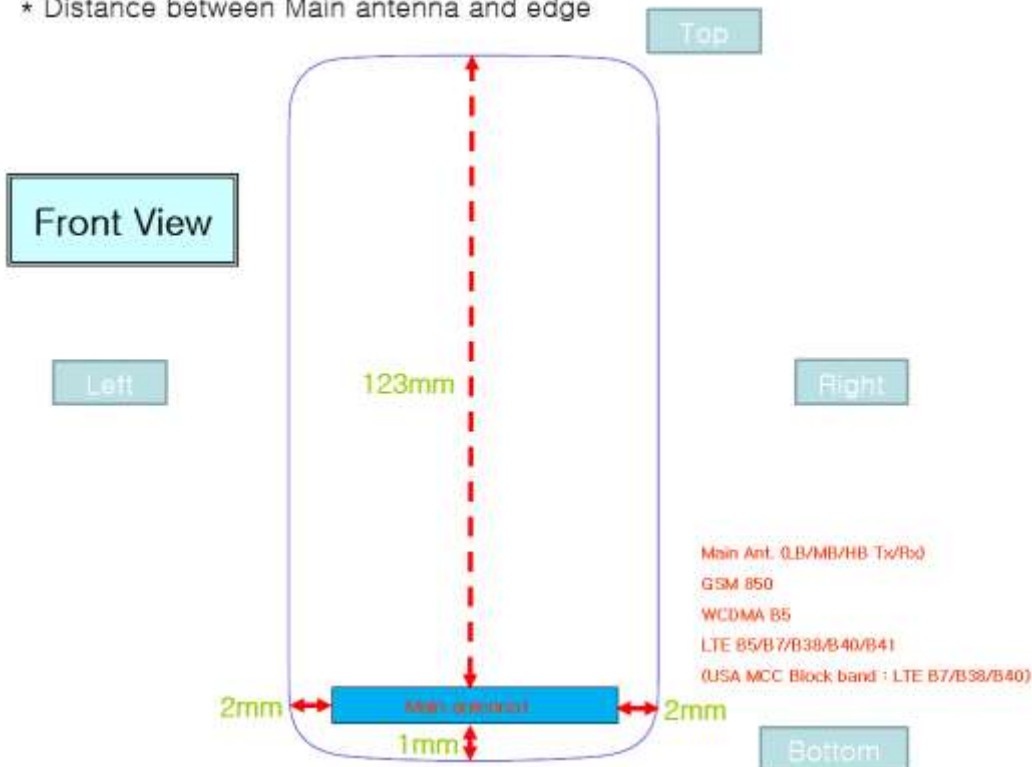
### **- DUT Antenna Information and SAR Test SETUP PHOTOGRAPHS**

## DUT Antenna Information

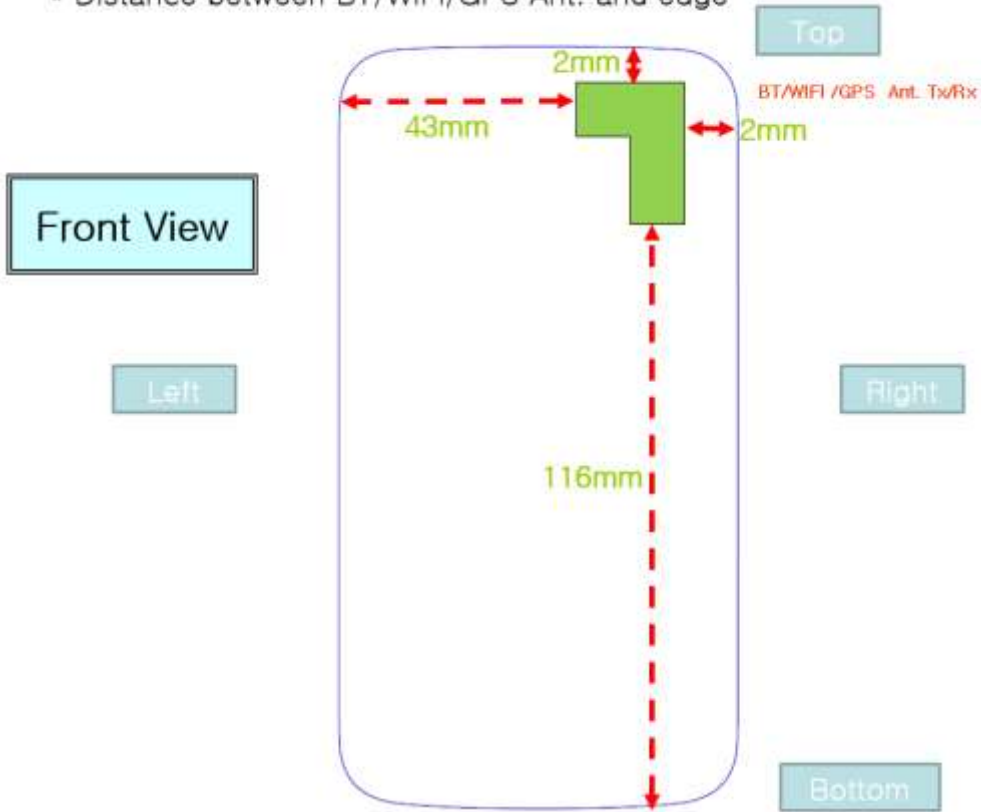
\* Placement of each antenna



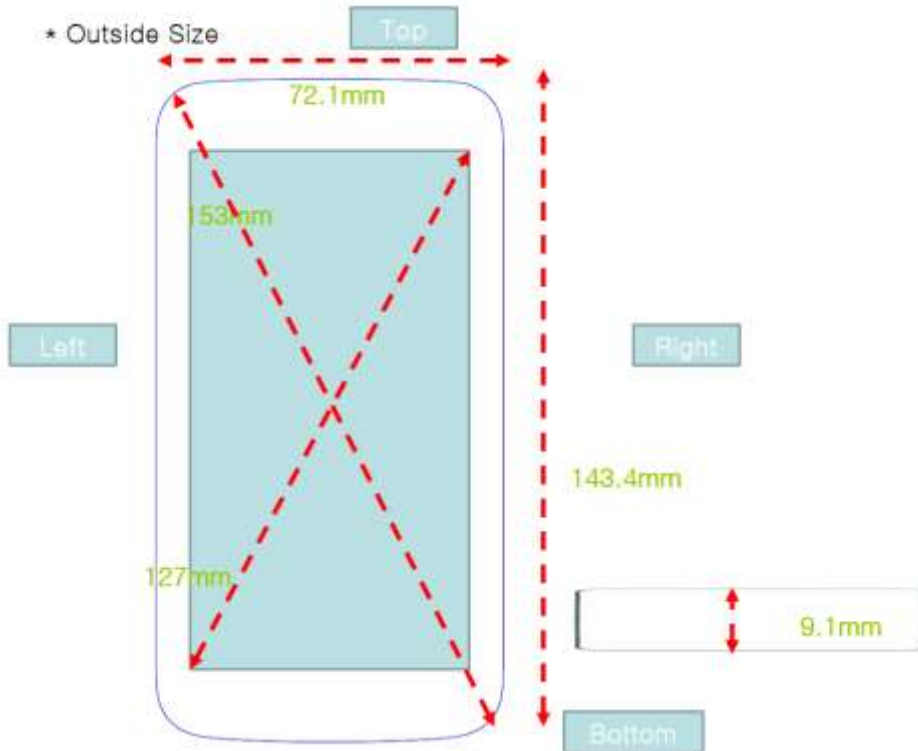
\* Distance between Main antenna and edge



\* Distance between BT/WiFi/GPS Ant. and edge



\* Outside Size



## SAR Test Setup Photographs

■ Test Setup Photo(Left All)



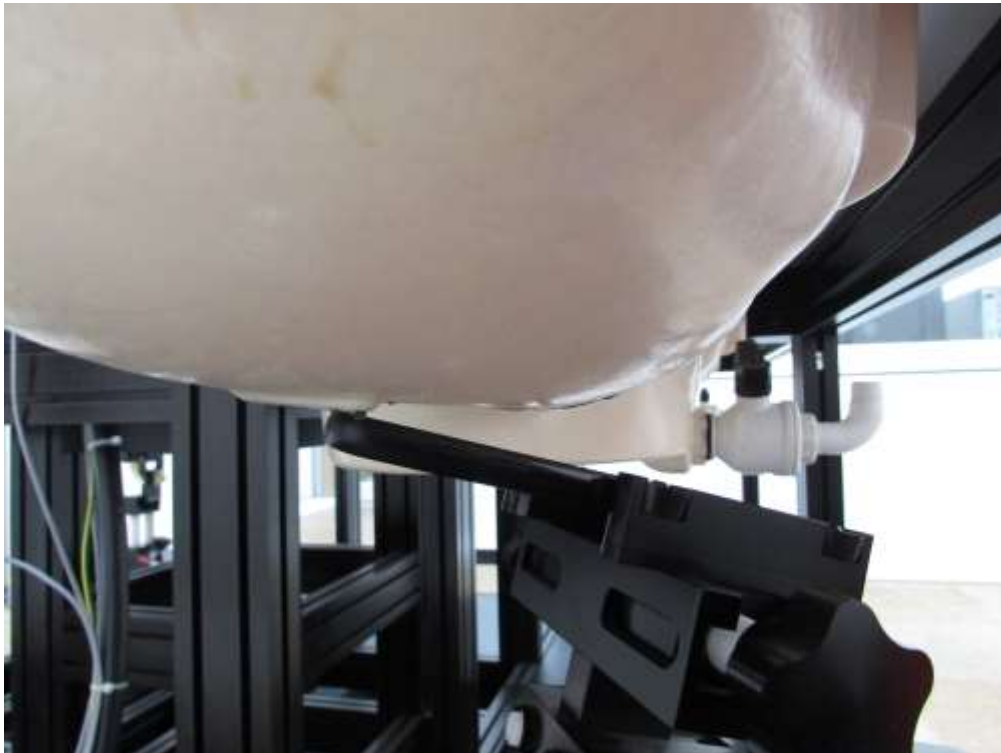
■ Test Setup Photo(Left Touch/Tilt)



■ **Test Setup Photo (Right All)**



■ Test Setup Photo (Right Touch/Tilt)





■ Test Setup Photo (Body All)



■ **Test Setup Photo (Rear)**



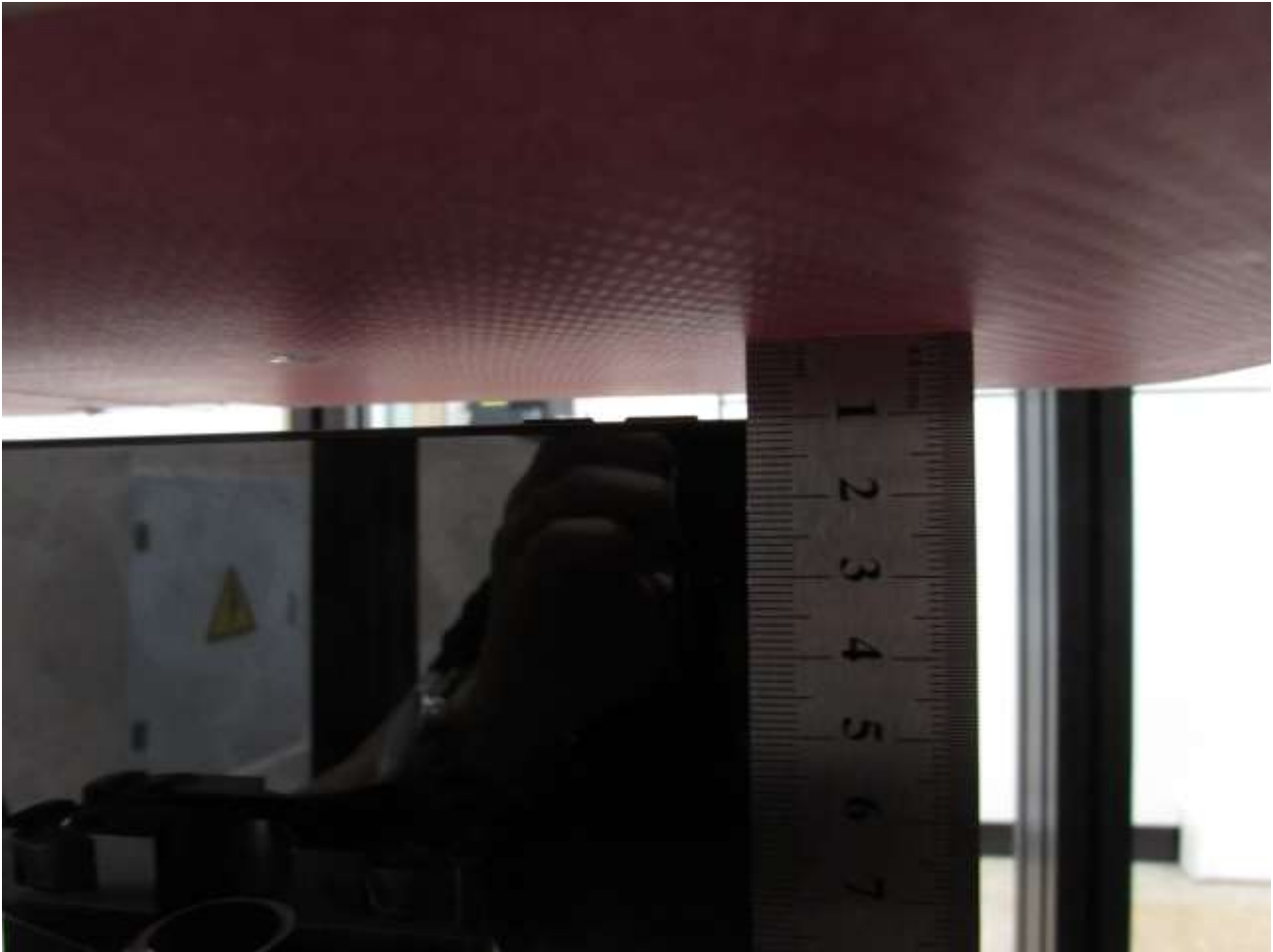
**[Distance of 1.0 cm from the EUT]**

■ **Test Setup Photo (Front)**



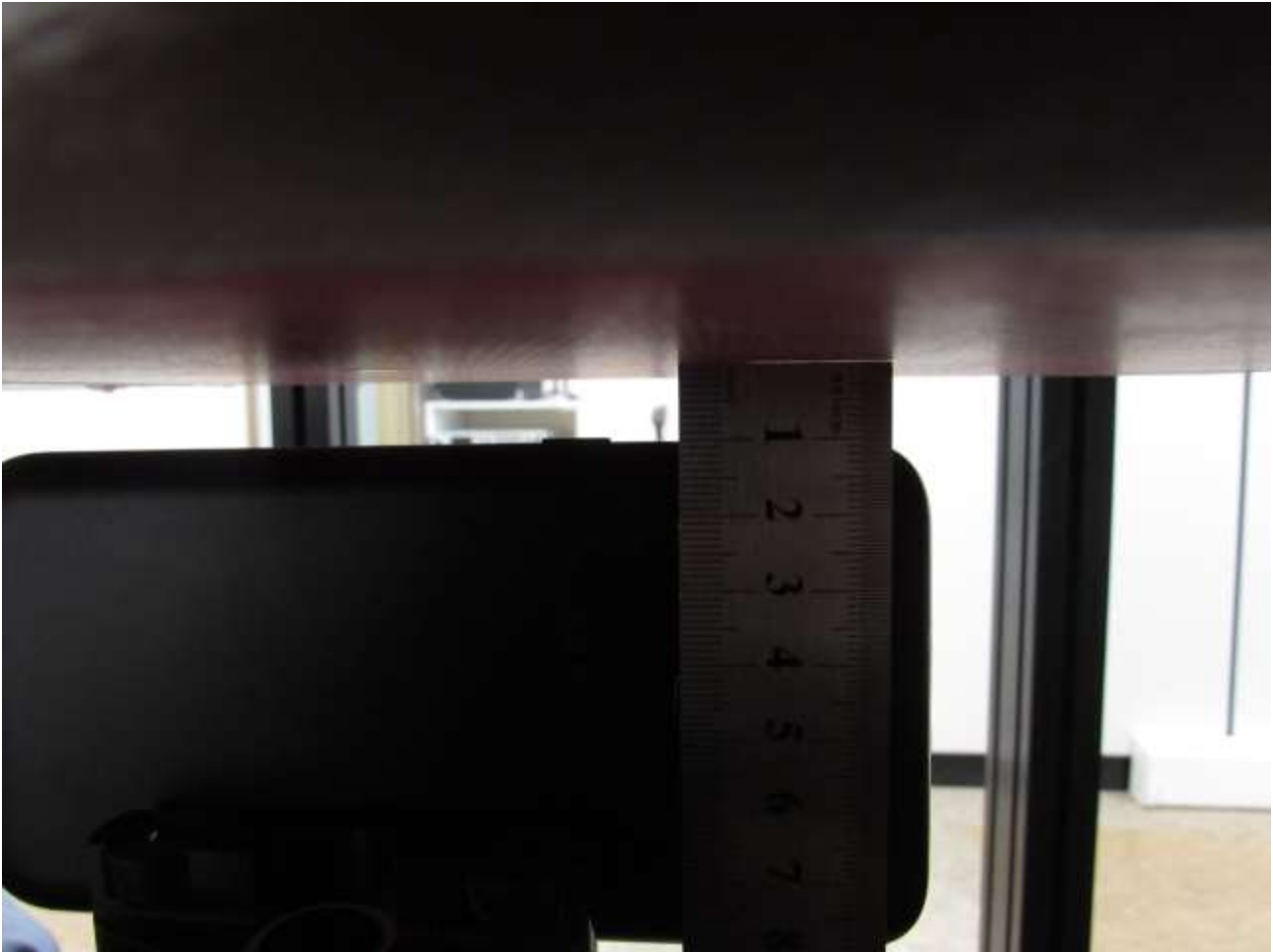
**[Distance of 1.0 cm from the EUT]**

■ **Test Setup Photo (Left)**



**[Distance of 1.0 cm from the EUT]**

■ **Test Setup Photo (Right)**



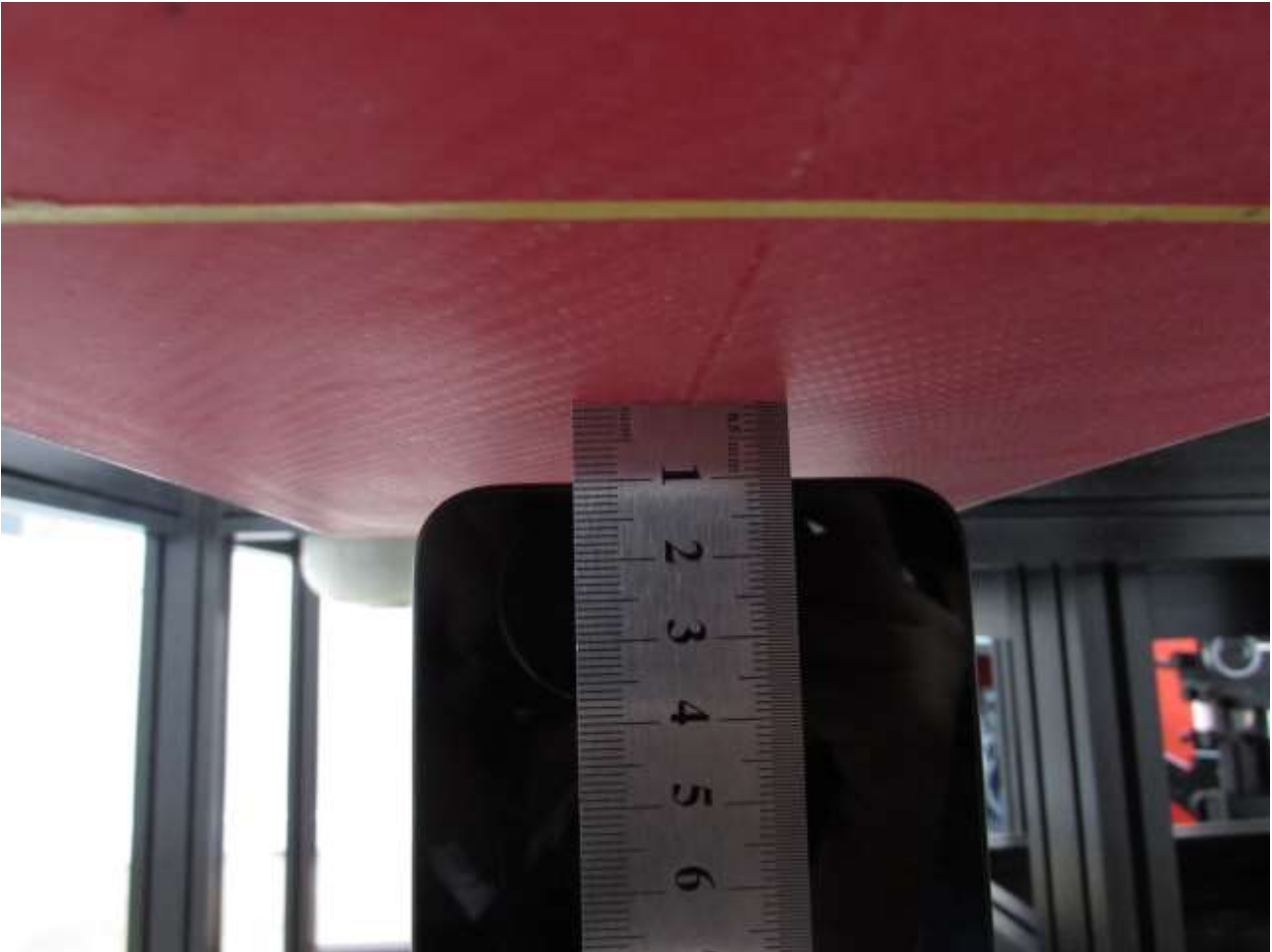
**[Distance of 1.0 cm from the EUT]**

■ **Test Setup Photo (Top)**



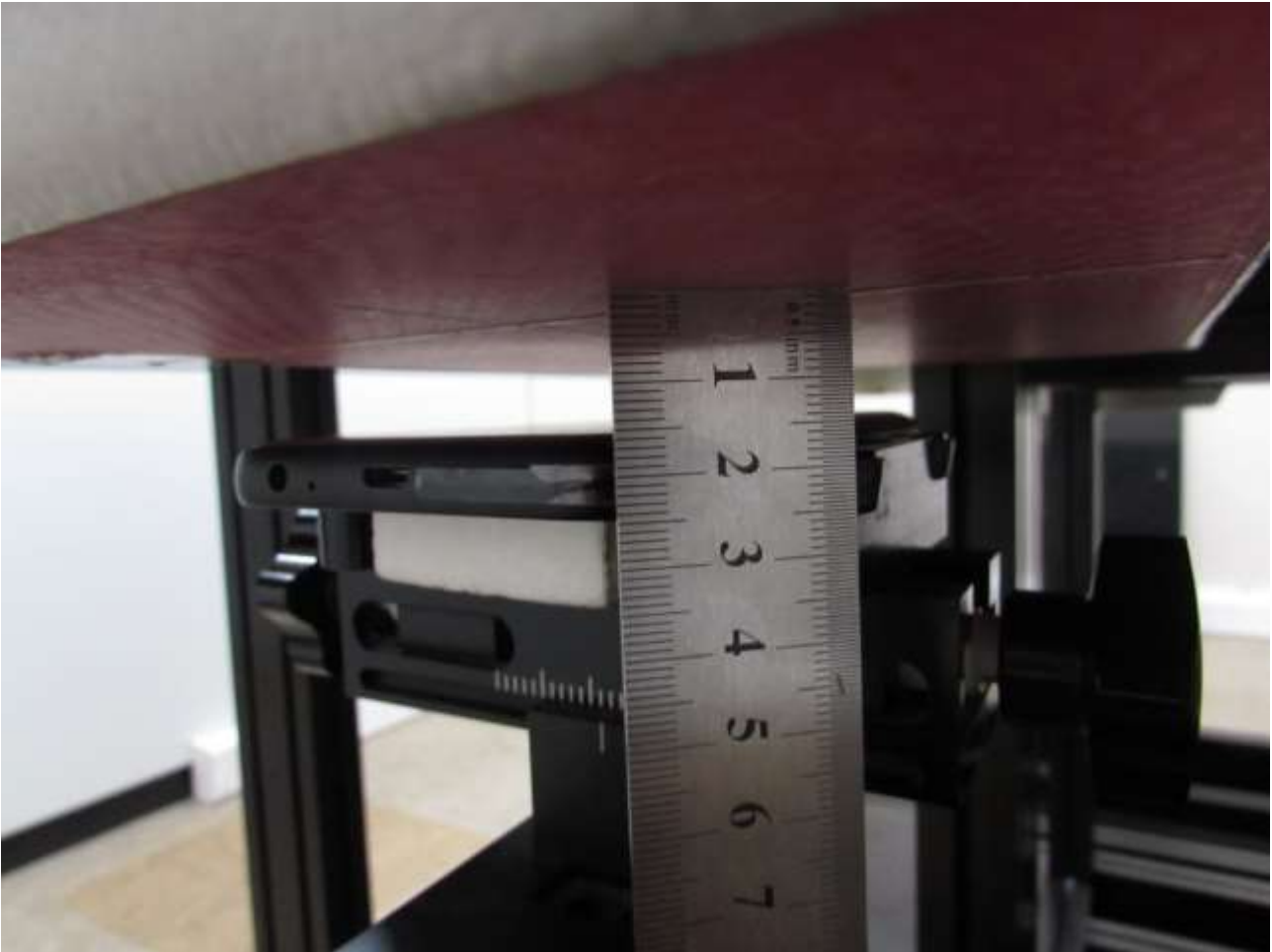
**[Distance of 1.0 cm from the EUT]**

■ **Test Setup Photo (Bottom)**



**[Distance of 1.0 cm from the EUT]**

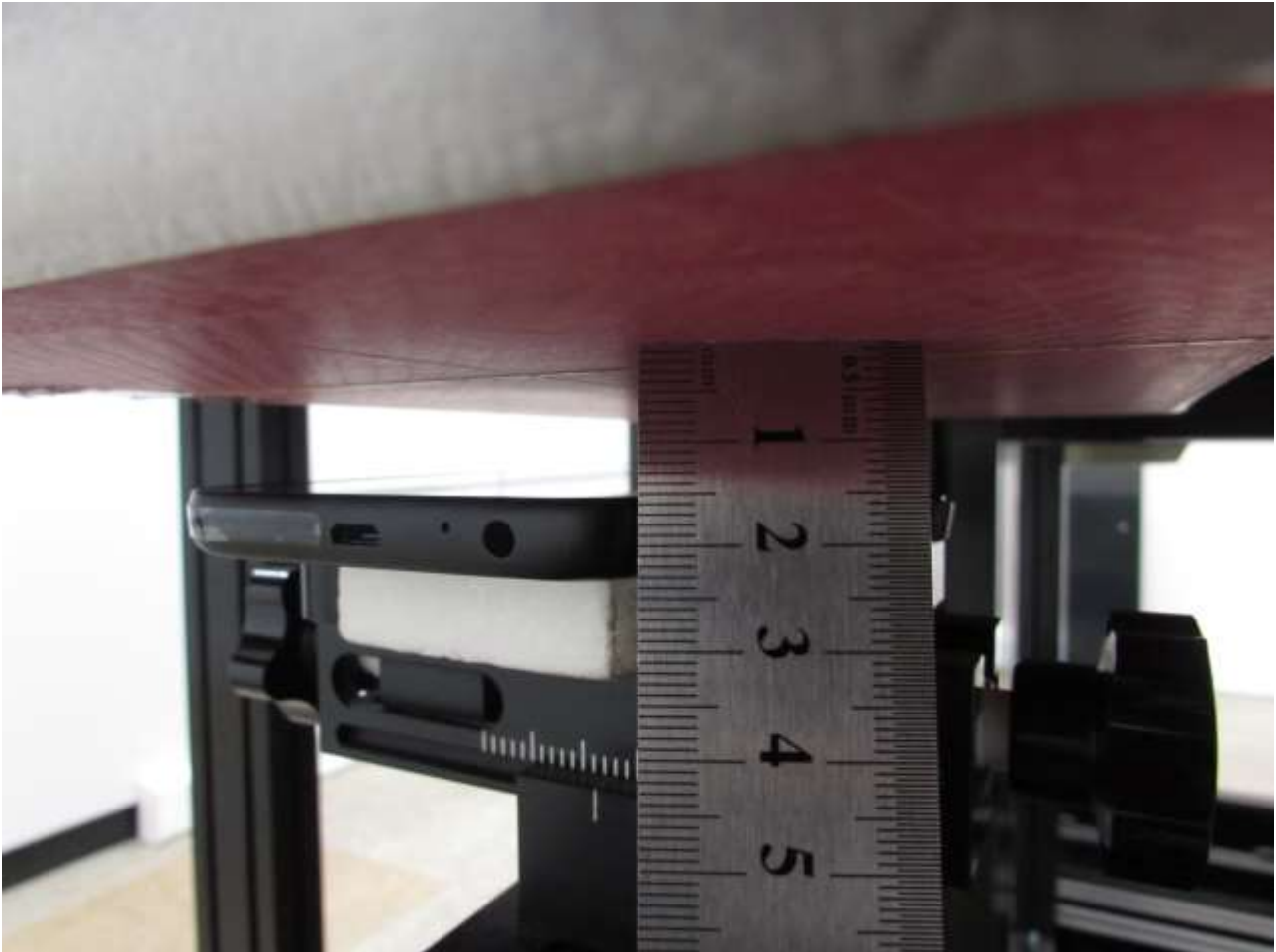
■ **Test Setup Photo (Rear)**



**[Distance of 1.5 cm from the EUT]**



■ **Test Setup Photo (Front)**



**[Distance of 1.5 cm from the EUT]**