

FCC ID: A3LSMJ260AZ





SAMSUNG
MODEL : SM-J260AZ
FCC ID : A3LSM260AZ
RATED : 3.8V 1600 mAh
FOR INFORMATION CALL : 1 800 SAMSUNG
IMEI : 352453100040042
S/N : R38KA068GYB ZK
181004 REV0.1
SKU : XXXXX000
MADE IN KOREA 16GB

A02 N8

N8

microSD
SIM

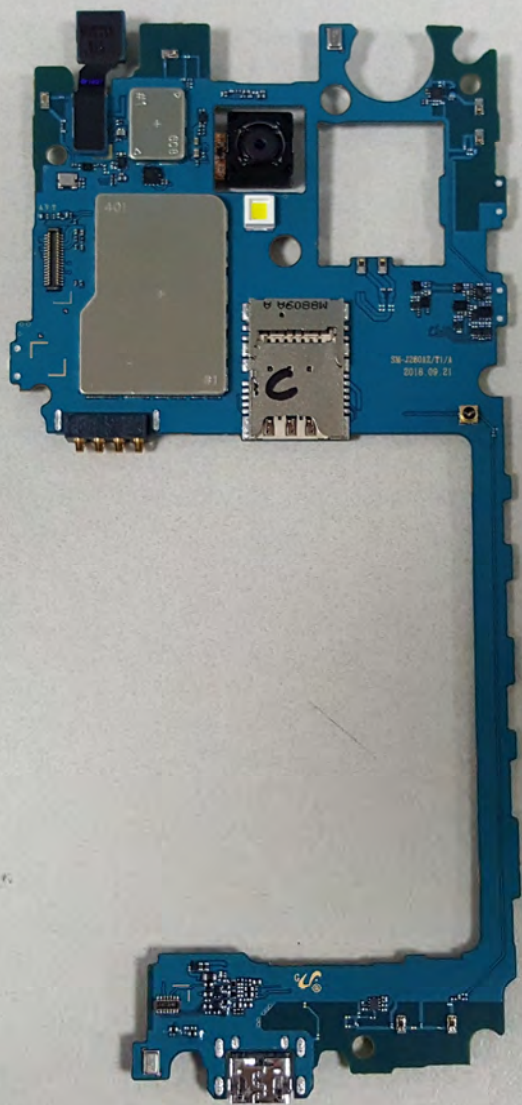
J2 CORE-KJ42 >ALK #2

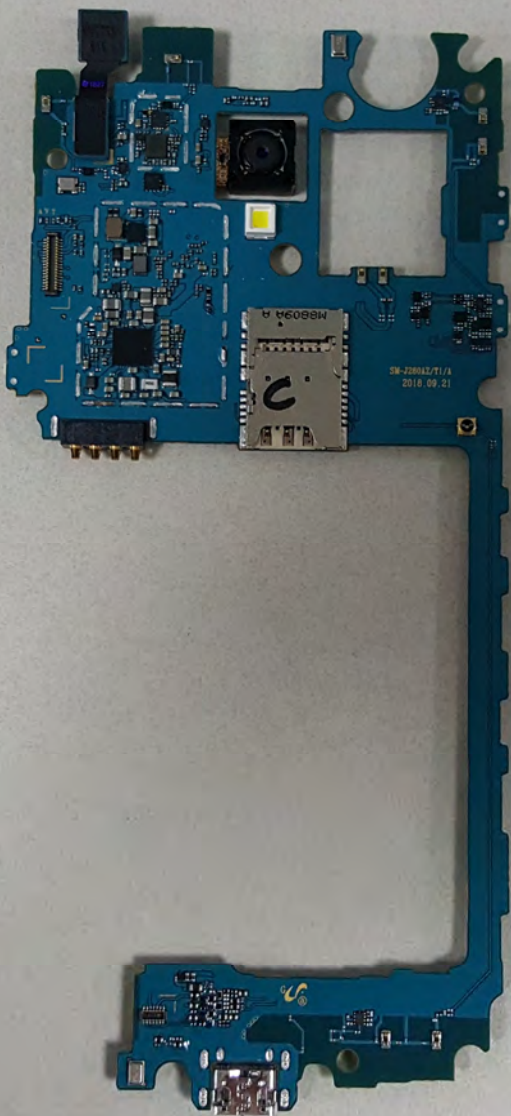
C1-G02
V10-13
N8

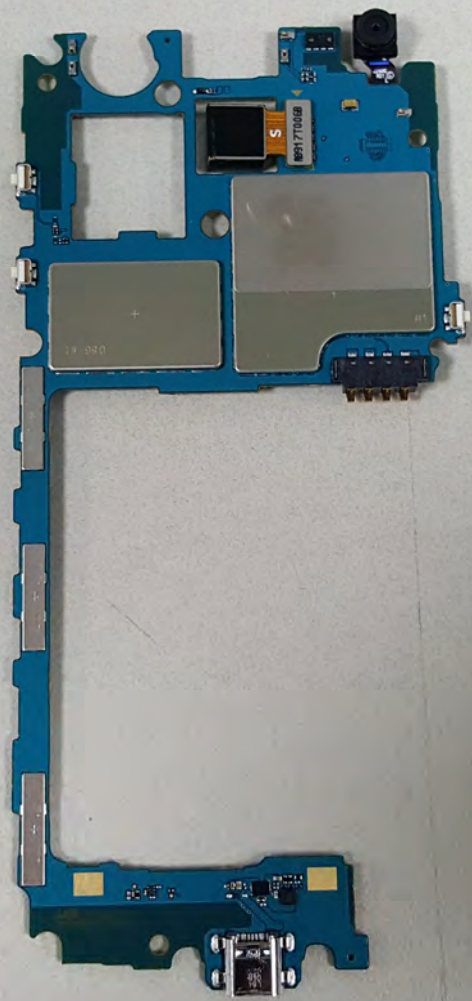


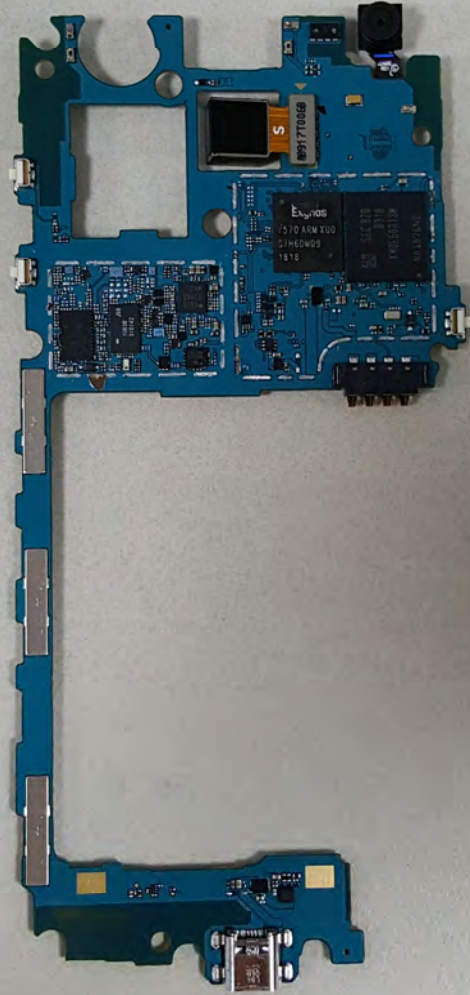
SAMSUNG
MODEL : SM-J260AZ
FCC ID : A3LSM260AZ
RATED : 3.8V : 1600 mAh
FOR INFORMATION CALL : 1 800 SAMSUNG

IMEI : 352463100040042
S/N : R38KA068GYB ZK
181004 REV0.1
SKU : XXXX0000
MADE IN KOREA 16GB











SAMSUNG
MODEL : SM-J260AZ
FCC ID : A3LSM-J260AZ
RATED : 3.8V 1600 mAh
FOR INFORMATION CALL : 1 800 SAMSUNG
IMEI : 352453100040042
S/N : R38KA0580Y8 ZK
181004 REV0.1
SKU : XXXX0000
MADE IN KOREA 160B



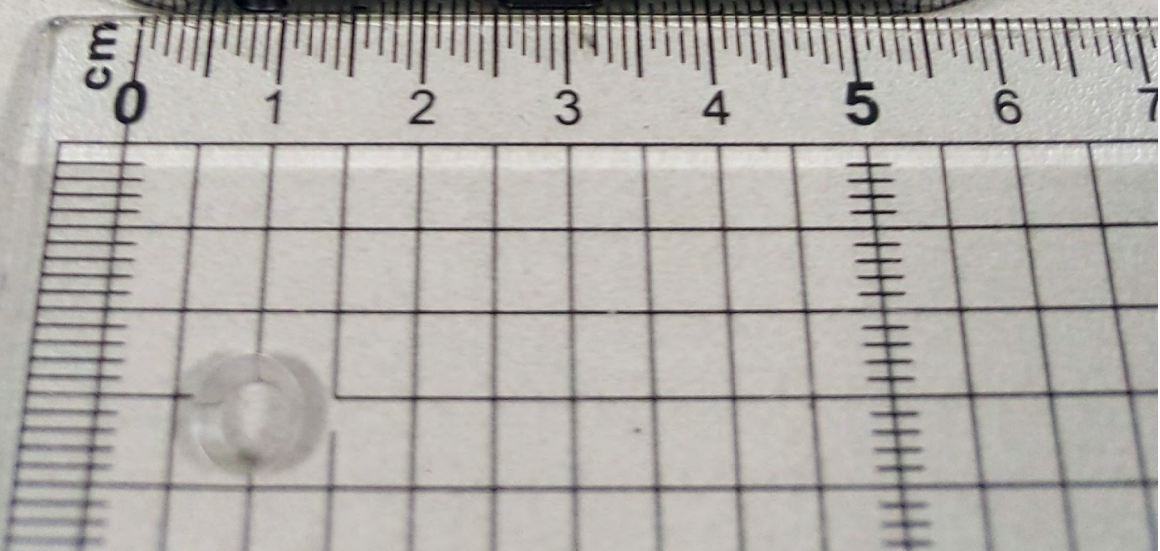


SAMSUNG
MODEL : SM-J260AZ
FCC ID : A3LSMJ260AZ
RATED : 3.8V : 1500 mAh
FOR INFORMATION CALL : 1 800 SAMSUNG

IMEI : 352453100040042
S/N : R38KA068GYB ZK
181004 REV0.1
SKU : XXXX0000
MADE IN KOREA 16GB

J2 CORE KJ42 >ALK #2

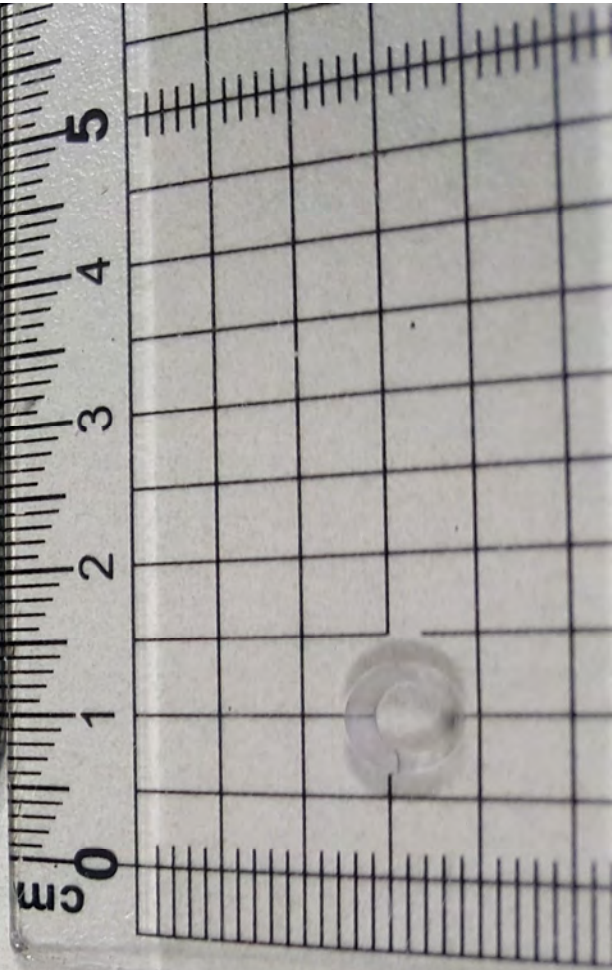
C1-G02
V10-13
NB

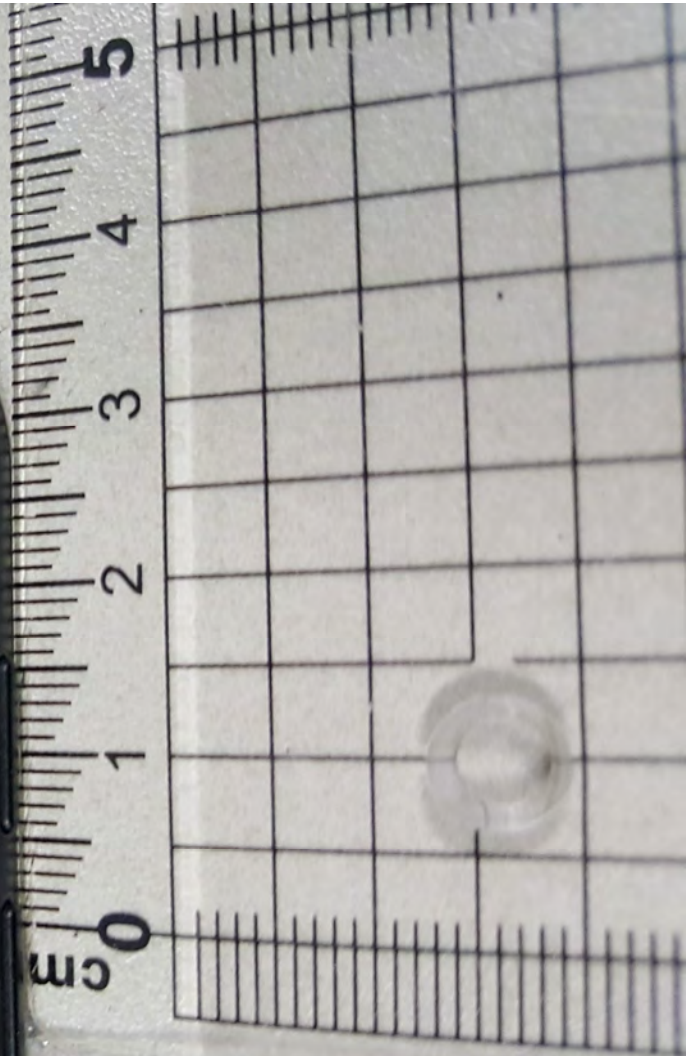


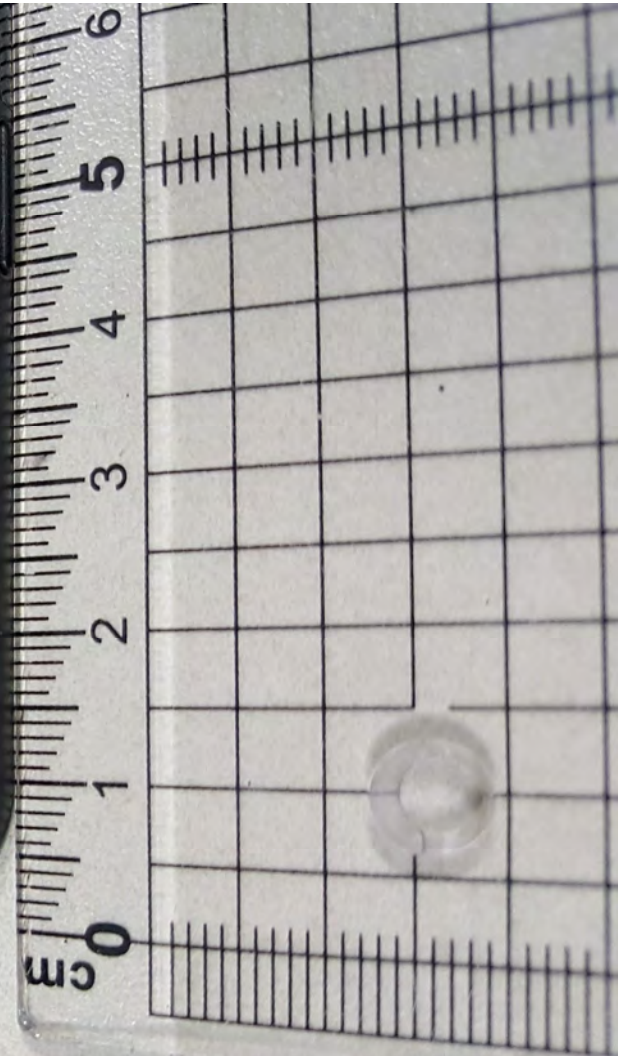
SAMSUNG
MODEL : SM-J260AZ
FCC ID : A3LSMJ260AZ
RATED : 3.8V : 1600 mA
FOR INFORMATION CALL : 1 800 SAMSUNG
IMEI : 362463100040042
S/N : R38KA068GYB ZK
181004 REV0.1
SKU : XXXXX0000
MADE IN KOREA 16GB



C1-G02
V10-13
N8









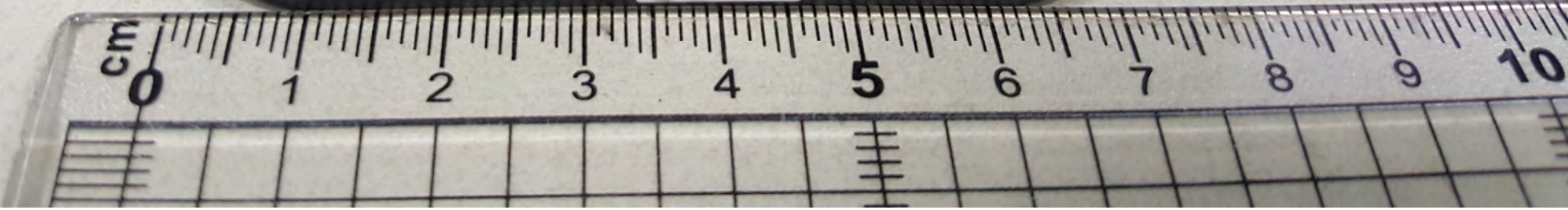
Technical specifications and regulatory information sticker at the top of the back cover.

M8809A A

8N

A02
8N

RJF0631H







DK181012B18
(D)