

20201221_SystemPerformanceCheck-D5GHzV2 SN 1209

Frequency: 5250 MHz; Duty Cycle: 1:1; Room Ambient Temperature: 23.0°C; Liquid Temperature: 22.0°C
 Medium parameters used (interpolated): $f = 5250$ MHz; $\sigma = 4.733$ S/m; $\epsilon_r = 36.944$; $\rho = 1000$ kg/m³

DASY5 Configuration:

- Area Scan Setting: Find Secondary Maximum Within: 2.0 dB and with a peak SAR value greater than 0.012W/kg
- Averaged Fast SAR: Polynomial fit
- Electronics: DAE4 Sn1468; Calibrated: 2020-08-25
- Probe: EX3DV4 - SN7376; ConvF(5.15, 5.15, 5.15) @ 5250 MHz; Calibrated: 2020-07-31
- Sensor-Surface: 1.4mm (Mechanical Surface Detection)
- Phantom: SAM (20deg probe tilt) with CRP v5.0_Back; Type: QD000P40CD; Serial: TP:1882

Head/5.25 GHz, Pin=100mW/Area Scan (7x7x1): Measurement grid: dx=10mm, dy=10mm
 Maximum value of SAR (measured) = 19.4 W/kg

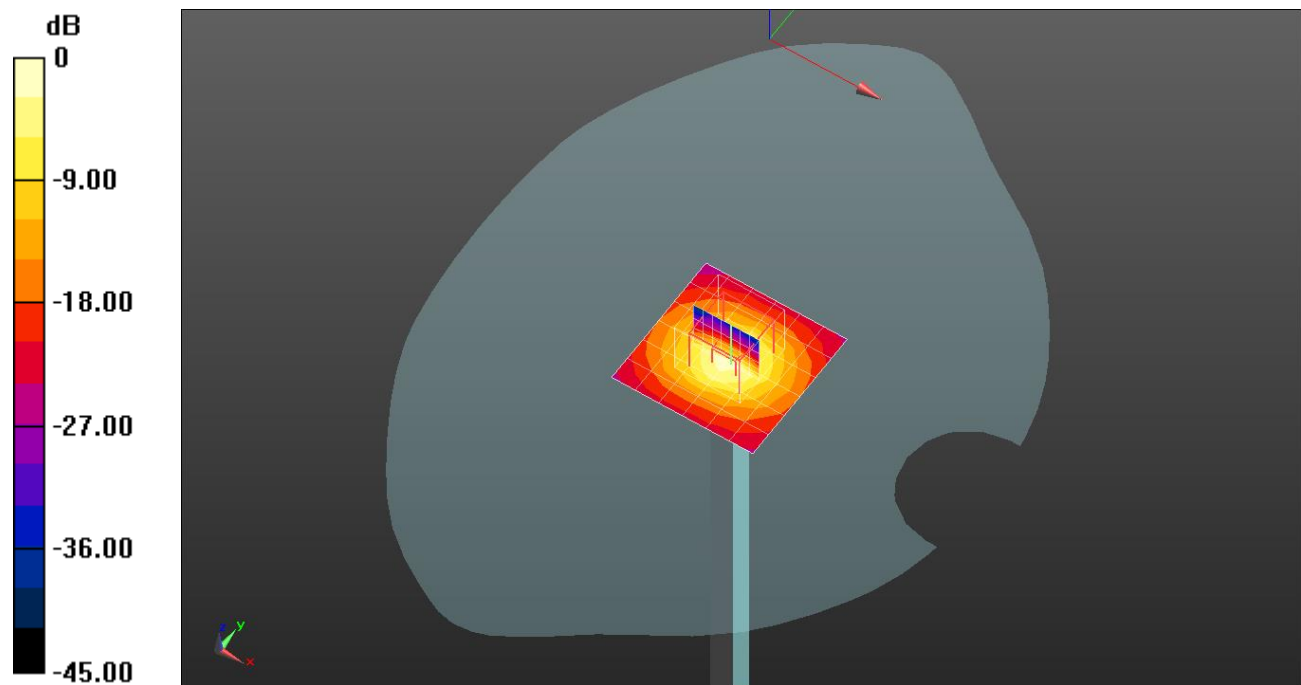
Head/5.25 GHz, Pin=100mW/Zoom Scan (8x8x7)/Cube 0: Measurement grid: dx=4mm, dy=4mm, dz=1.4mm

Reference Value = 70.90 V/m; Power Drift = -0.05 dB

Peak SAR (extrapolated) = 33.2 W/kg

SAR(1 g) = 7.41 W/kg; SAR(10 g) = 2.1 W/kg

Maximum value of SAR (measured) = 18.2 W/kg

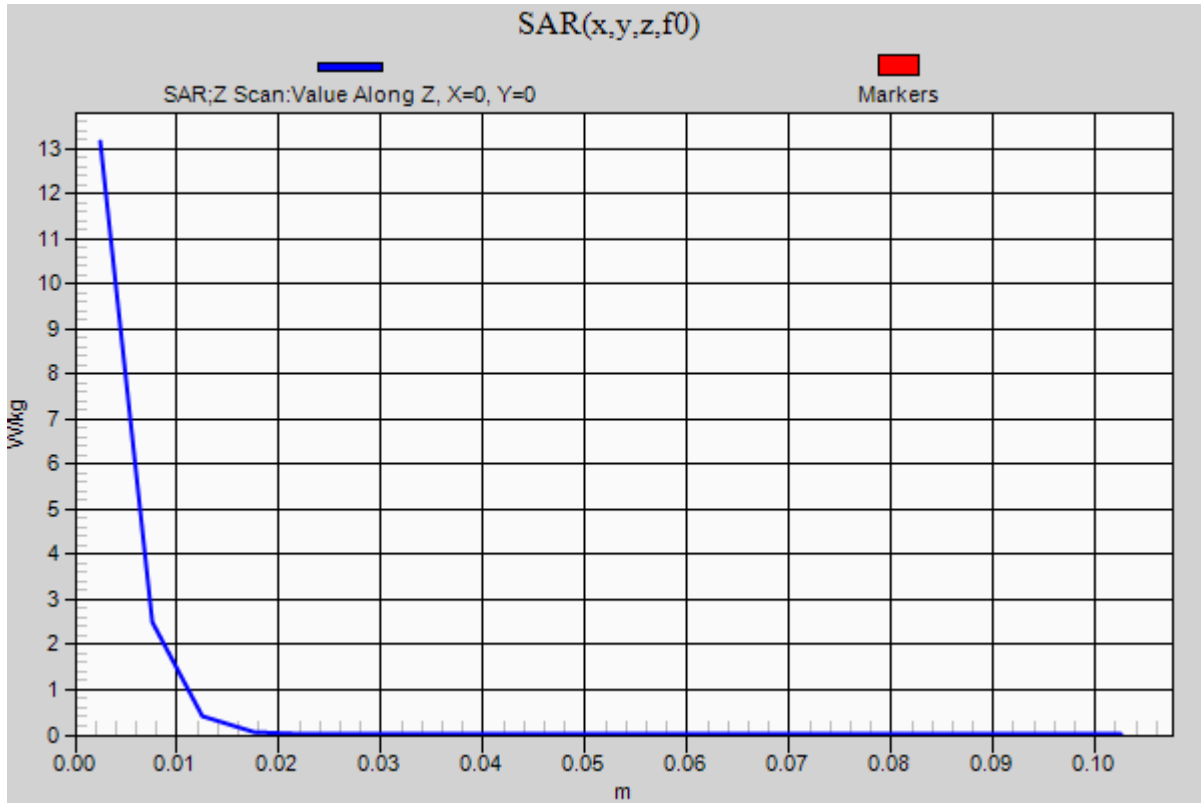


0 dB = 18.2 W/kg = 12.60 dBW/kg

20201221_SystemPerformanceCheck-D5GHzV2 SN 1209

Frequency: 5250 MHz; Duty Cycle: 1:1

Head/5.25 GHz, Pin=100mW/Z Scan (1x1x21): Measurement grid: dx=20mm, dy=20mm, dz=5mm
Maximum value of SAR (measured) = 13.2 W/kg



20210106_SystemPerformanceCheck-D2450V2 SN 939

Frequency: 2450 MHz; Duty Cycle: 1:1; Room Ambient Temperature: 23.0°C; Liquid Temperature: 22.0°C
Medium parameters used (interpolated): $f = 2450$ MHz; $\sigma = 1.776$ S/m; $\epsilon_r = 38.994$; $\rho = 1000$ kg/m³

DASY5 Configuration:

- Area Scan Setting: Find Secondary Maximum Within: 2.0 dB and with a peak SAR value greater than 0.012W/kg
- Averaged Fast SAR: Polynomial fit
- Electronics: DAE4 Sn1494; Calibrated: 2020-07-23
- Probe: EX3DV4 - SN7313; ConvF(7.76, 7.76, 7.76) @ 2450 MHz; Calibrated: 2020-02-25
- Sensor-Surface: 2.5mm (Mechanical Surface Detection), Sensor-Surface: 1.4mm (Mechanical Surface Detection)
- Phantom: Twin-SAM V5.0 (Right); Type: QD 000 P40 CD; Serial: 1855

Head/Pin=100 mW/Area Scan (8x8x1): Measurement grid: dx=12mm, dy=12mm

Maximum value of SAR (measured) = 6.93 W/kg

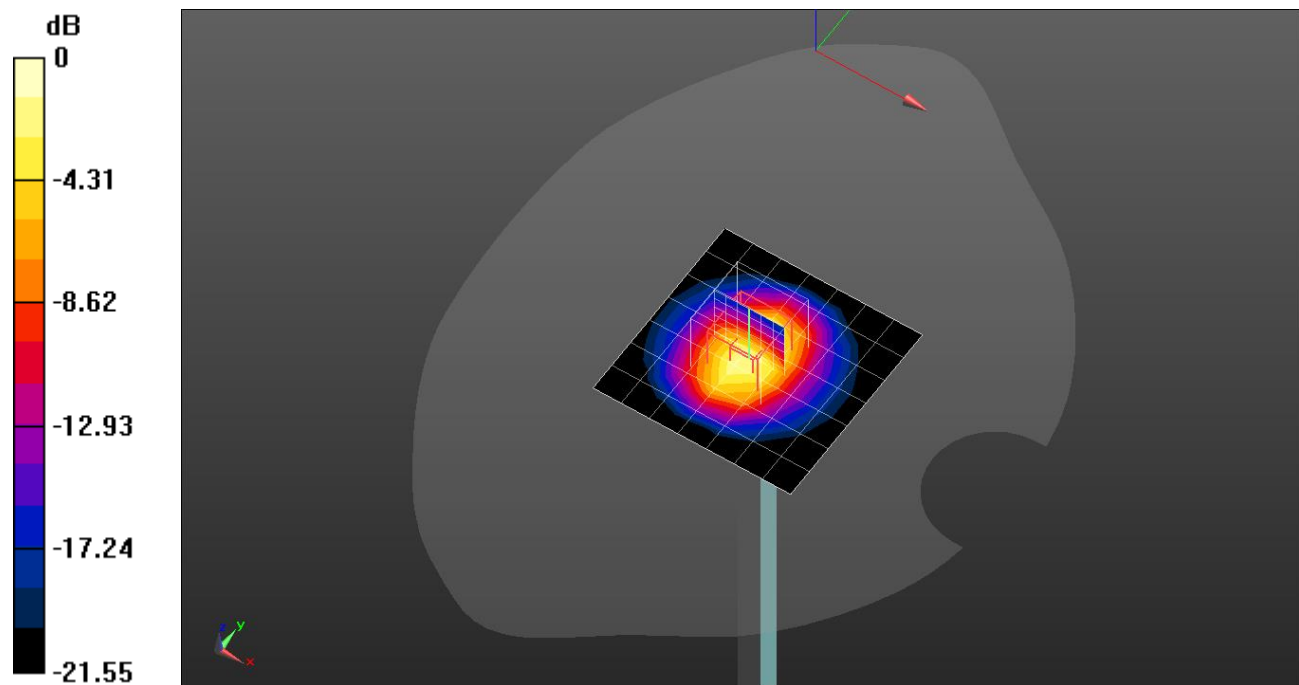
Head/Pin=100 mW/Zoom Scan (7x7x7) (7x7x7)/Cube 0: Measurement grid: dx=5mm, dy=5mm, dz=5mm

Reference Value = 66.58 V/m; Power Drift = 0.10 dB

Peak SAR (extrapolated) = 11.5 W/kg

SAR(1 g) = 5.66 W/kg; SAR(10 g) = 2.66 W/kg

Maximum value of SAR (measured) = 9.41 W/kg

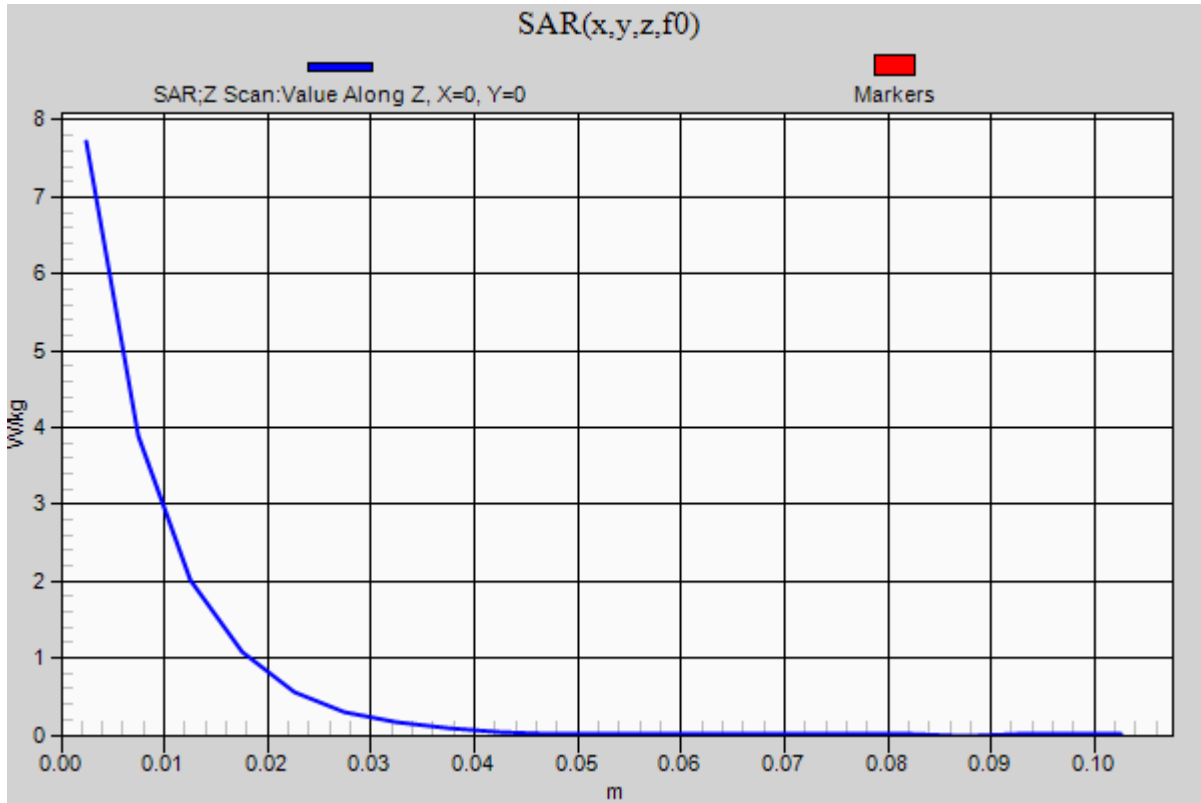


0 dB = 9.41 W/kg = 9.74 dBW/kg

20210106_SystemPerformanceCheck-D2450V2 SN 939

Frequency: 2450 MHz; Duty Cycle: 1:1

Head/Pin=100 mW/Z Scan (1x1x21): Measurement grid: dx=20mm, dy=20mm, dz=5mm
Maximum value of SAR (measured) = 7.72 W/kg



20210113_SystemPerformanceCheck-D1750V2 SN 1125

Frequency: 1750 MHz; Duty Cycle: 1:1; Room Ambient Temperature: 23.0°C; Liquid Temperature: 22.0°C
 Medium parameters used: $f = 1750 \text{ MHz}$; $\sigma = 1.337 \text{ S/m}$; $\epsilon_r = 40.801$; $\rho = 1000 \text{ kg/m}^3$

DASY5 Configuration:

- Area Scan Setting: Find Secondary Maximum Within: 2.0 dB and with a peak SAR value greater than 0.012W/kg
- Averaged Fast SAR: Polynomial fit
- Electronics: DAE4 Sn1494; Calibrated: 2020-07-23
- Probe: EX3DV4 - SN7313; ConvF(8.64, 8.64, 8.64) @ 1750 MHz; Calibrated: 2020-02-25
- Sensor-Surface: 2.5mm (Mechanical Surface Detection)
- Phantom: Twin-SAM V5.0 (Right); Type: QD 000 P40 CD; Serial: 1855

Head/Pin=100 mW/Area Scan (7x7x1): Measurement grid: dx=15mm, dy=15mm

Maximum value of SAR (measured) = 4.37 W/kg

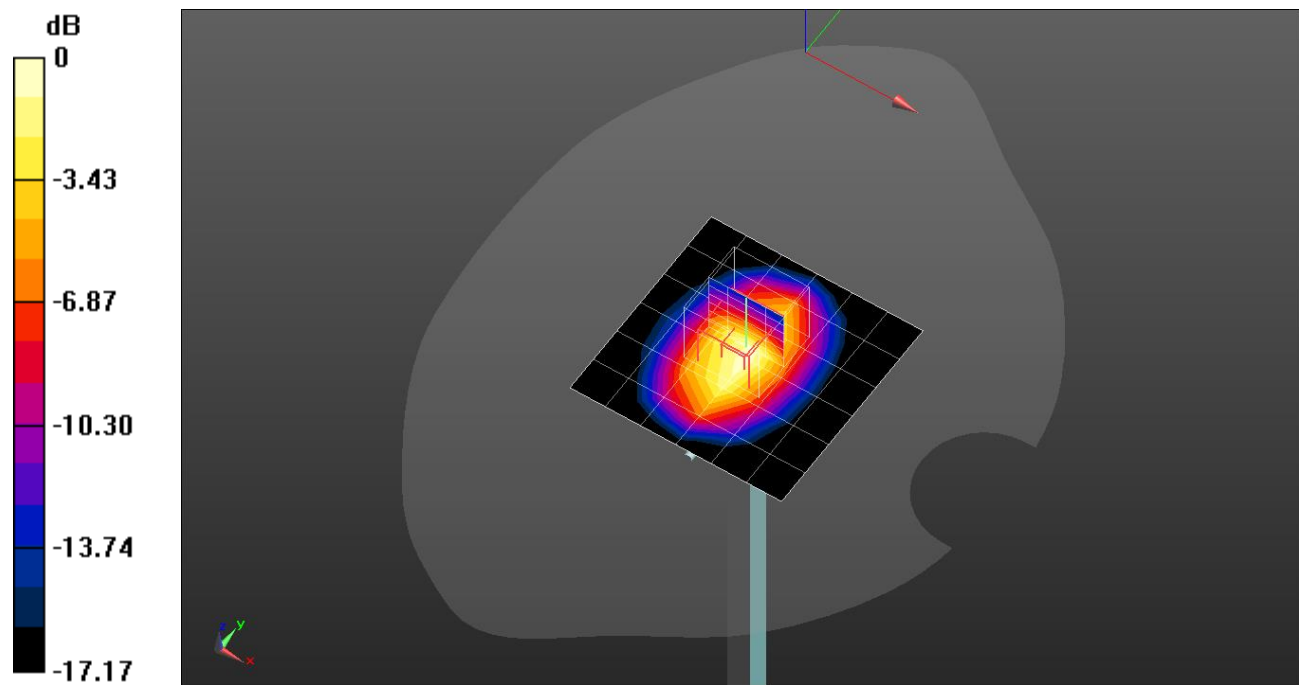
Head/Pin=100 mW/Zoom Scan (5x5x7)/Cube 0: Measurement grid: dx=8mm, dy=8mm, dz=5mm

Reference Value = 57.76 V/m; Power Drift = 0.10 dB

Peak SAR (extrapolated) = 6.05 W/kg

SAR(1 g) = 3.42 W/kg; SAR(10 g) = 1.84 W/kg

Maximum value of SAR (measured) = 4.49 W/kg

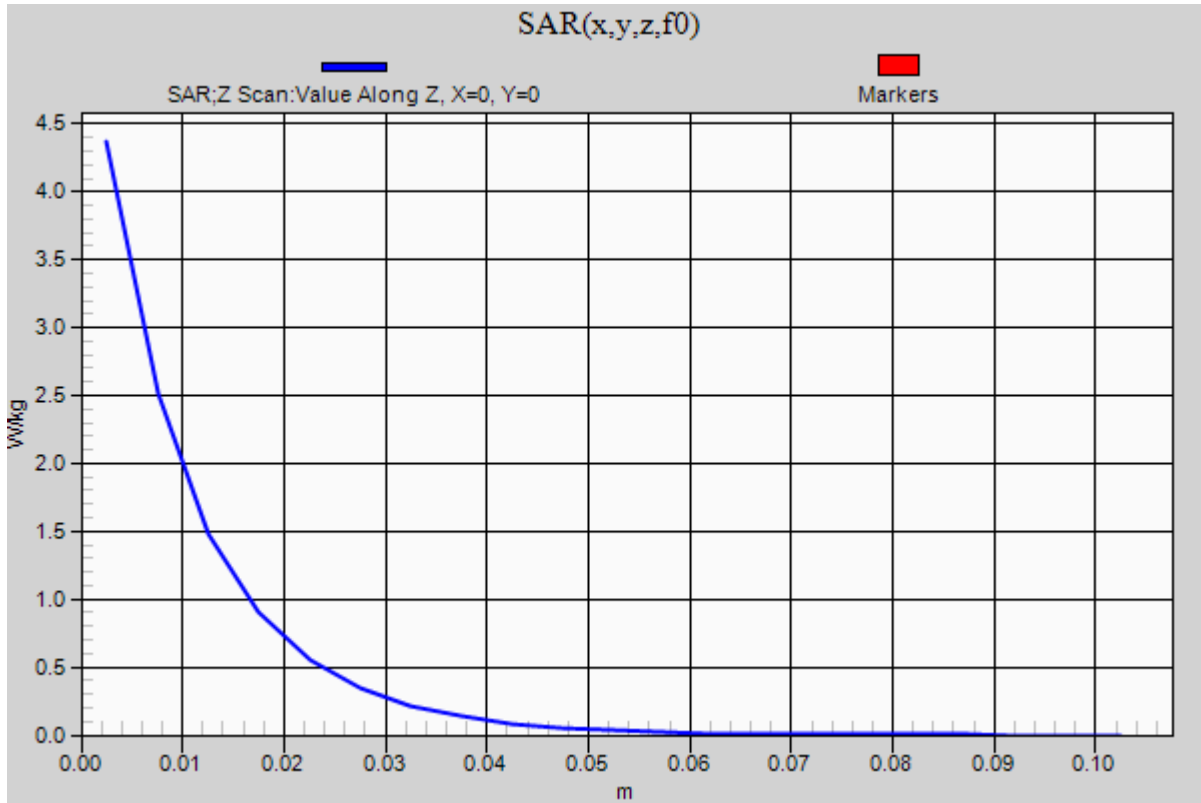


0 dB = 4.49 W/kg = 6.52 dBW/kg

20210113_SystemPerformanceCheck-D1750V2 SN 1125

Frequency: 1750 MHz; Duty Cycle: 1:1

Head/Pin=100 mW/Z Scan (1x1x21): Measurement grid: dx=20mm, dy=20mm, dz=5mm
Maximum value of SAR (measured) = 4.37 W/kg



20210215_SystemPerformanceCheck-D2600V2 SN 1097

Frequency: 2600 MHz; Duty Cycle: 1:1; Room Ambient Temperature: 23.0°C; Liquid Temperature: 22.0°C
Medium parameters used: $f = 2600$ MHz; $\sigma = 1.967$ S/m; $\epsilon_r = 37.854$; $\rho = 1000$ kg/m³

DASY5 Configuration:

- Area Scan Setting: Find Secondary Maximum Within: 2.0 dB and with a peak SAR value greater than 0.012W/kg
- Averaged Fast SAR: Polynomial fit
- Electronics: DAE4 Sn1591; Calibrated: 2020-08-25
- Probe: EX3DV4 - SN7314; ConvF(7.14, 7.14, 7.14) @ 2600 MHz; Calibrated: 2020-05-29
- Sensor-Surface: 2.5mm (Mechanical Surface Detection)
- Phantom: SAM Phantom CRP v5.0(Left); Type: QD000P40CD; Serial: TP:1991

Head/Pin=100 mW/Area Scan (5x7x1): Measurement grid: dx=12mm, dy=12mm

Maximum value of SAR (measured) = 8.15 W/kg

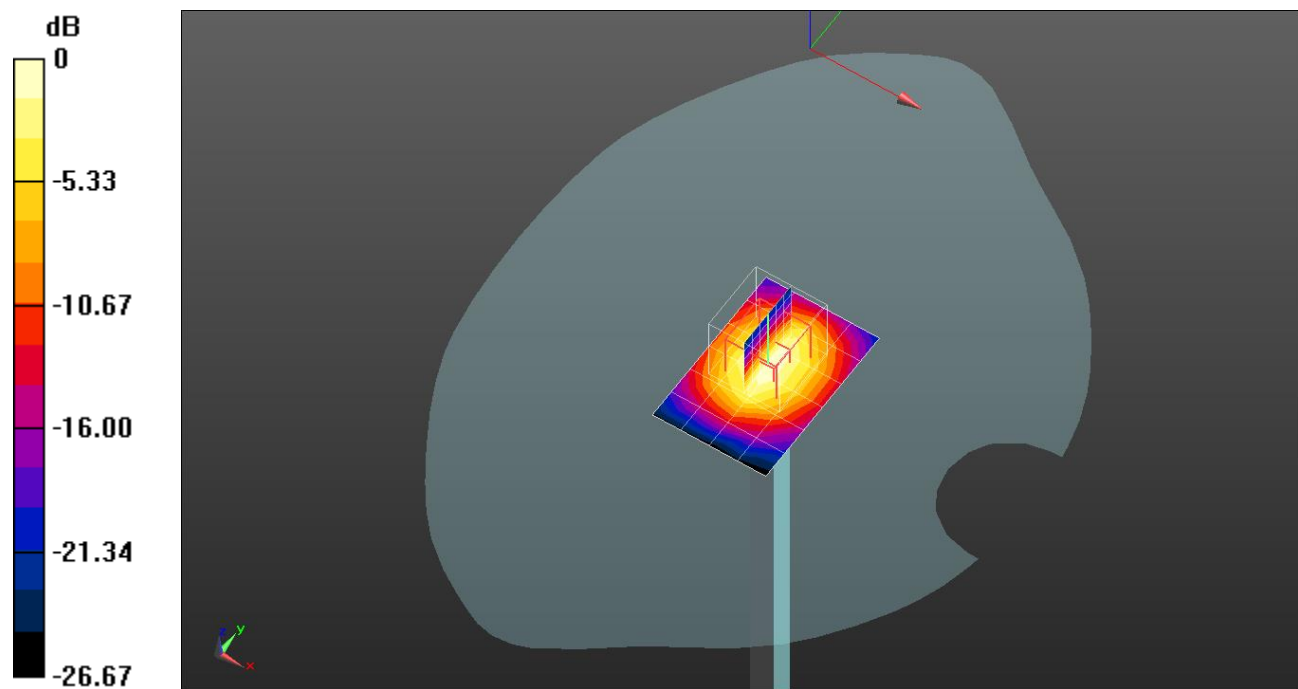
Head/Pin=100 mW/Zoom Scan (7x7x7)/Cube 0: Measurement grid: dx=5mm, dy=5mm, dz=5mm

Reference Value = 68.40 V/m; Power Drift = 0.01 dB

Peak SAR (extrapolated) = 14.4 W/kg

SAR(1 g) = 6.10 W/kg; SAR(10 g) = 2.62 W/kg

Maximum value of SAR (measured) = 9.04 W/kg

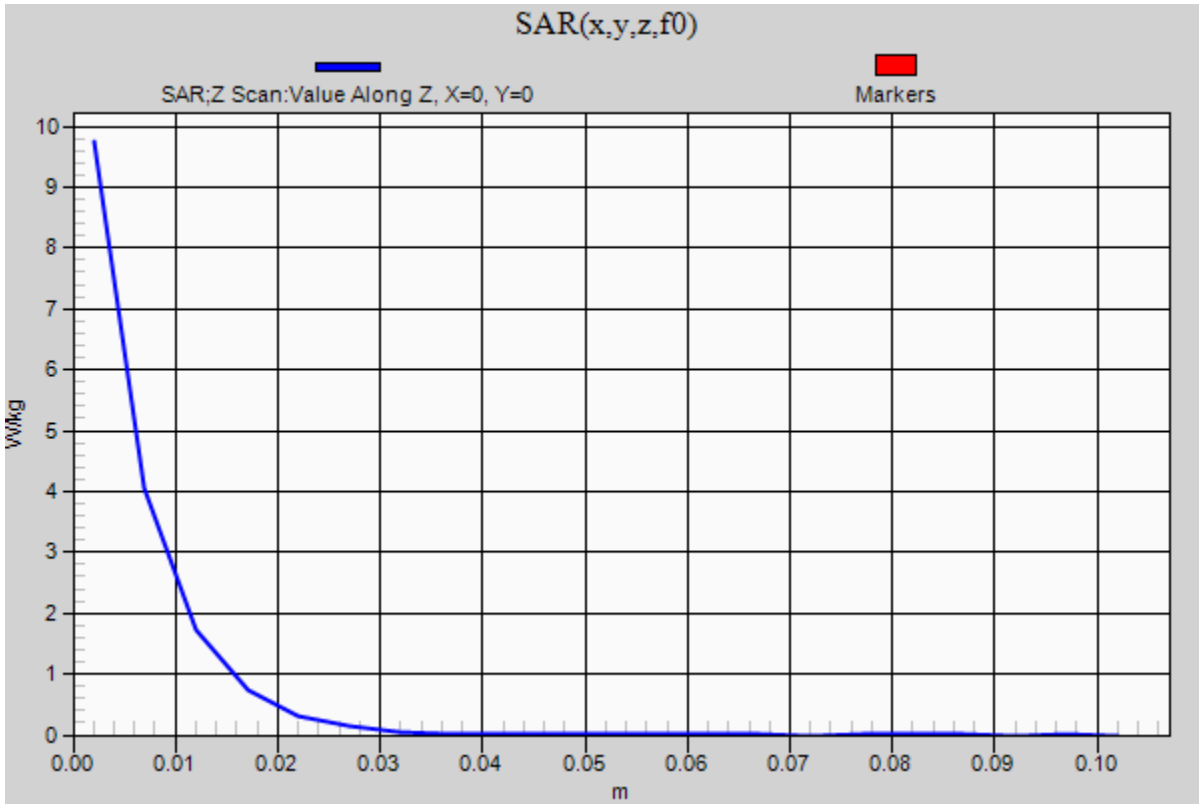


0 dB = 9.04 W/kg = 9.56 dBW/kg

20210215_SystemPerformanceCheck-D2600V2 SN 1097

Frequency: 2600 MHz; Duty Cycle: 1:1

Head/Pin=100 mW/Z Scan (1x1x21): Measurement grid: dx=20mm, dy=20mm, dz=5mm
Maximum value of SAR (measured) = 9.74 W/kg



20201221_SystemPerformanceCheck-D750V3 SN 1122

Frequency: 750 MHz; Duty Cycle: 1:1; Room Ambient Temperature: 23.0°C; Liquid Temperature: 22.0°C
Medium parameters used: $f = 750$ MHz; $\sigma = 0.905$ S/m; $\epsilon_r = 41.819$; $\rho = 1000$ kg/m³

DASY5 Configuration:

- Area Scan Setting: Find Secondary Maximum Within: 2.0 dB and with a peak SAR value greater than 0.012W/kg
- Averaged Fast SAR: Polynomial fit
- Electronics: DAE4 Sn1343; Calibrated: 2020-08-25
- Probe: EX3DV4 - SN3871; ConvF(10.39, 10.39, 10.39) @ 750 MHz; Calibrated: 2020-08-28
- Sensor-Surface: 2.5mm (Mechanical Surface Detection)
- Phantom: SAM (20deg probe tilt) with CRP v5.0; Type: QD000P40CD; Serial: 1751

Head/Pin=100 mW/Area Scan (7x14x1): Measurement grid: dx=15mm, dy=15mm

Maximum value of SAR (measured) = 1.03 W/kg

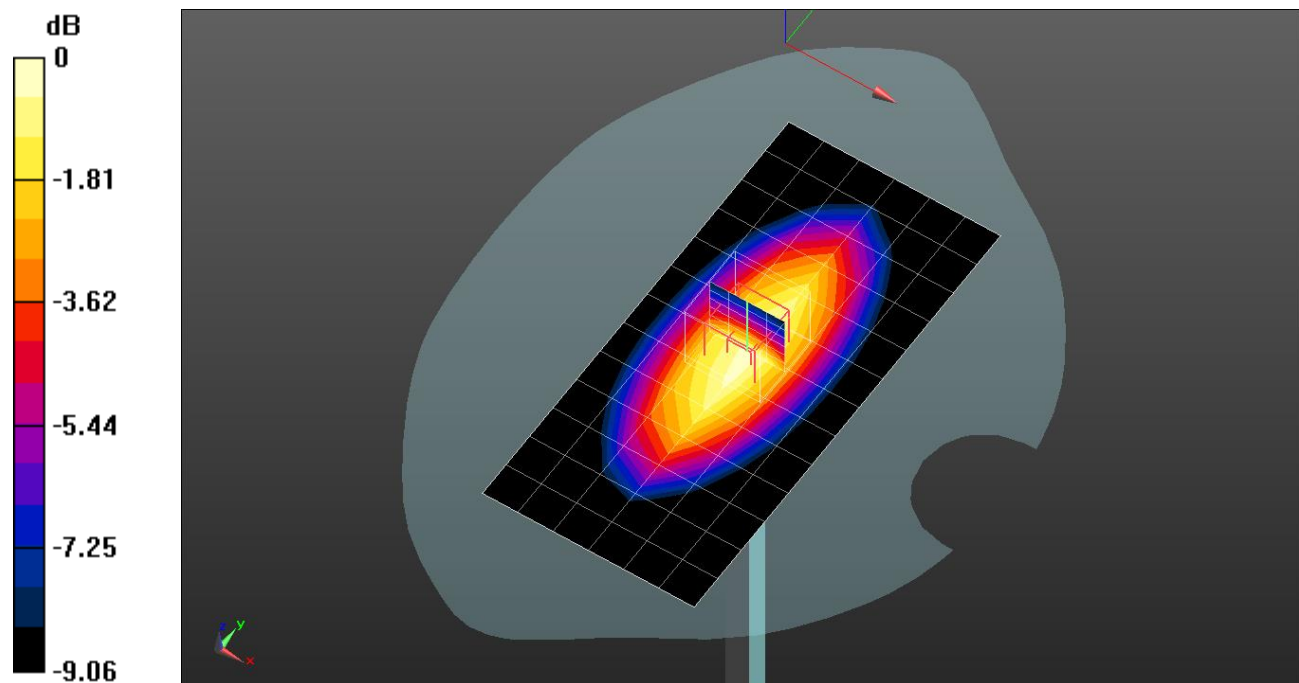
Head/Pin=100 mW/Zoom Scan (5x5x7)/Cube 0: Measurement grid: dx=8mm, dy=8mm, dz=5mm

Reference Value = 34.33 V/m; Power Drift = -0.08 dB

Peak SAR (extrapolated) = 1.26 W/kg

SAR(1 g) = 0.885 W/kg; SAR(10 g) = 0.608 W/kg

Maximum value of SAR (measured) = 1.05 W/kg

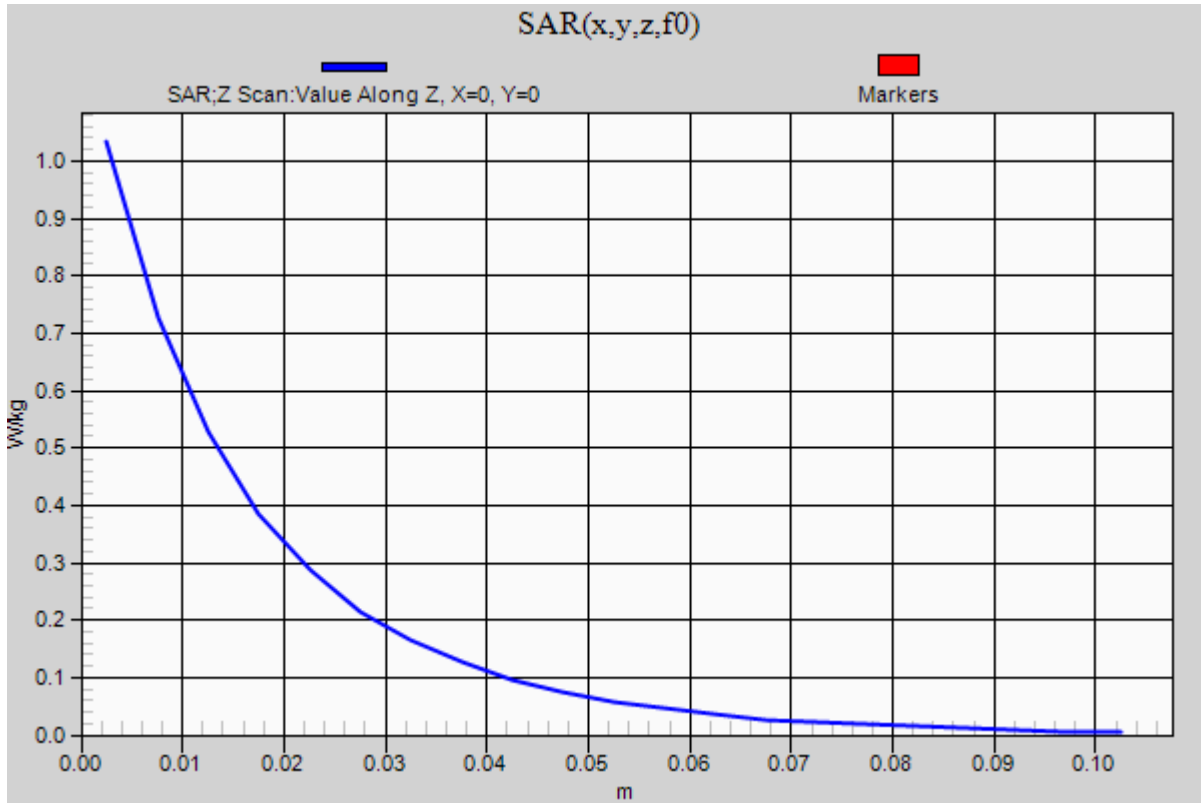


0 dB = 1.05 W/kg = 0.21 dBW/kg

20201221_SystemPerformanceCheck-D750V3 SN 1122

Frequency: 750 MHz; Duty Cycle: 1:1

Head/Pin=100 mW/Z Scan (1x1x21): Measurement grid: dx=20mm, dy=20mm, dz=5mm
Maximum value of SAR (measured) = 1.03 W/kg



20201221_SystemPerformanceCheck-D835V2 SN 4d174

Frequency: 835 MHz; Duty Cycle: 1:1; Room Ambient Temperature: 23.0°C; Liquid Temperature: 22.0°C
Medium parameters used: $f = 835$ MHz; $\sigma = 0.932$ S/m; $\epsilon_r = 41.584$; $\rho = 1000$ kg/m³

DASY5 Configuration:

- Area Scan Setting: Find Secondary Maximum Within: 2.0 dB and with a peak SAR value greater than 0.012W/kg
- Averaged Fast SAR: Polynomial fit
- Electronics: DAE4 Sn1343; Calibrated: 2020-08-25
- Probe: EX3DV4 - SN3871; ConvF(9.83, 9.83, 9.83) @ 835 MHz; Calibrated: 2020-08-28
- Sensor-Surface: 2.5mm (Mechanical Surface Detection)
- Phantom: SAM (20deg probe tilt) with CRP v5.0; Type: QD000P40CD; Serial: 1751

Head/Pin=100 mW/Area Scan (7x13x1): Measurement grid: dx=15mm, dy=15mm

Maximum value of SAR (measured) = 1.06 W/kg

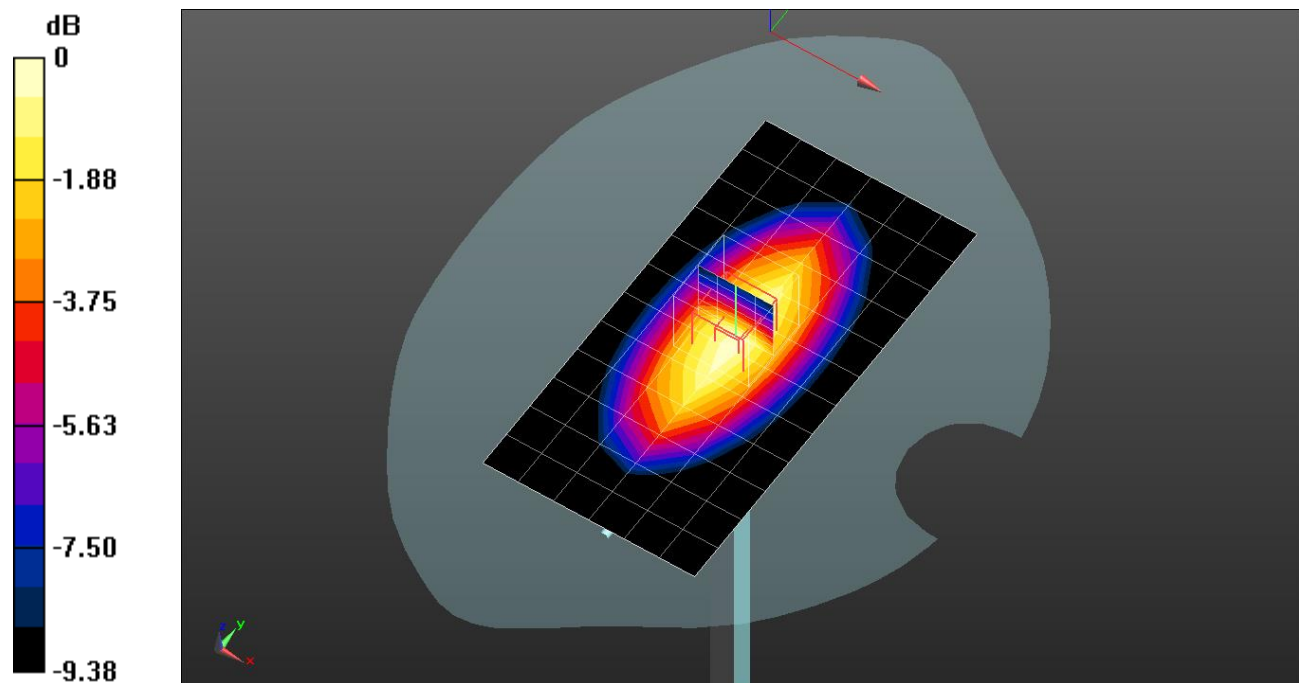
Head/Pin=100 mW/Zoom Scan (5x5x7)/Cube 0: Measurement grid: dx=8mm, dy=8mm, dz=5mm

Reference Value = 34.14 V/m; Power Drift = -0.05 dB

Peak SAR (extrapolated) = 1.28 W/kg

SAR(1 g) = 0.895 W/kg; SAR(10 g) = 0.608 W/kg

Maximum value of SAR (measured) = 1.07 W/kg

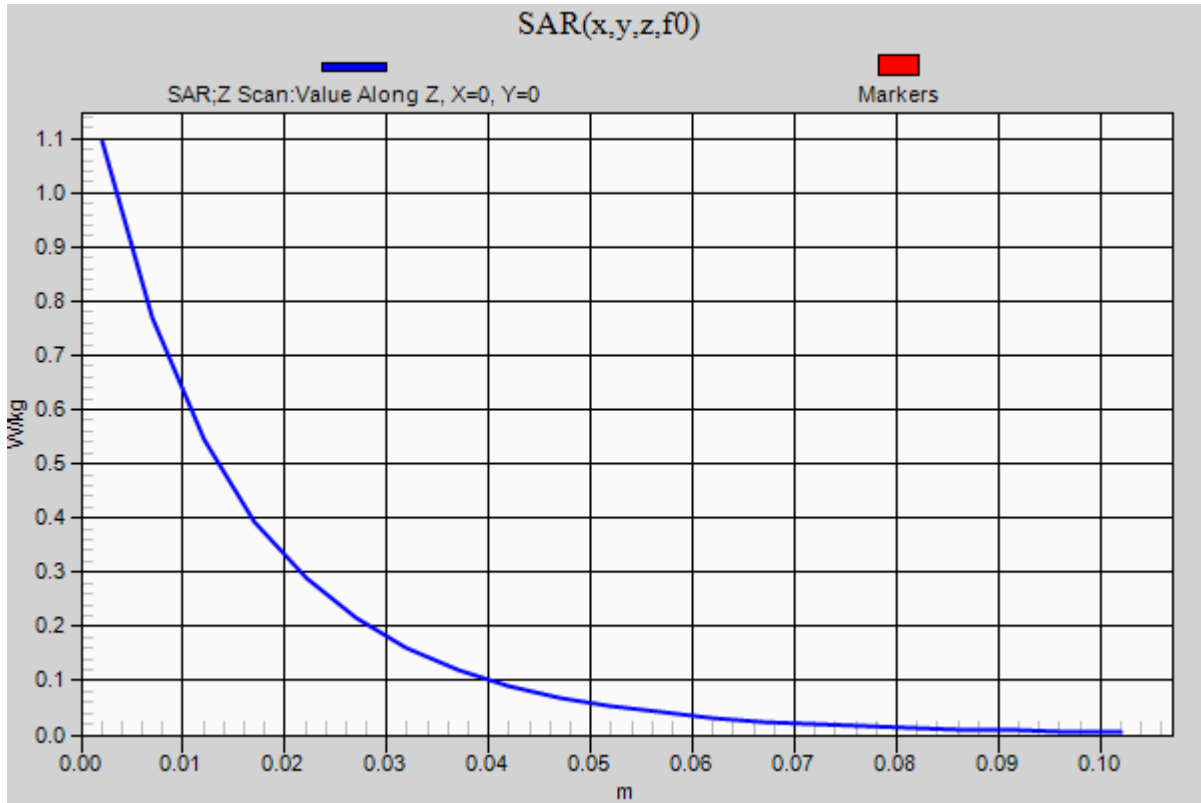


0 dB = 1.07 W/kg = 0.29 dBW/kg

20201221_SystemPerformanceCheck-D835V2 SN 4d174

Frequency: 835 MHz; Duty Cycle: 1:1

Head/Pin=100 mW/Z Scan (1x1x21): Measurement grid: dx=20mm, dy=20mm, dz=5mm
Maximum value of SAR (measured) = 1.09 W/kg



20210203_SystemPerformanceCheck-D1900V2 SN 5d199

Frequency: 1900 MHz; Duty Cycle: 1:1; Room Ambient Temperature: 23.0°C; Liquid Temperature: 22.0°C
 Medium parameters used: $f = 1900 \text{ MHz}$; $\sigma = 1.433 \text{ S/m}$; $\epsilon_r = 38.411$; $\rho = 1000 \text{ kg/m}^3$

DASY5 Configuration:

- Area Scan Setting: Find Secondary Maximum Within: 2.0 dB and with a peak SAR value greater than 0.012W/kg
- Averaged Fast SAR: Polynomial fit
- Electronics: DAE4 Sn1343; Calibrated: 8/25/2020
- Probe: EX3DV4 - SN3871; ConvF(8.33, 8.33, 8.33) @ 1900 MHz; Calibrated: 8/28/2020
- Sensor-Surface: 2.5mm (Mechanical Surface Detection)
- Phantom: SAM (20deg probe tilt) with CRP v5.0; Type: QD000P40CD; Serial: 1751

Head/Pin=100 mW/Area Scan (7x7x1): Measurement grid: dx=15mm, dy=15mm

Maximum value of SAR (measured) = 5.57 W/kg

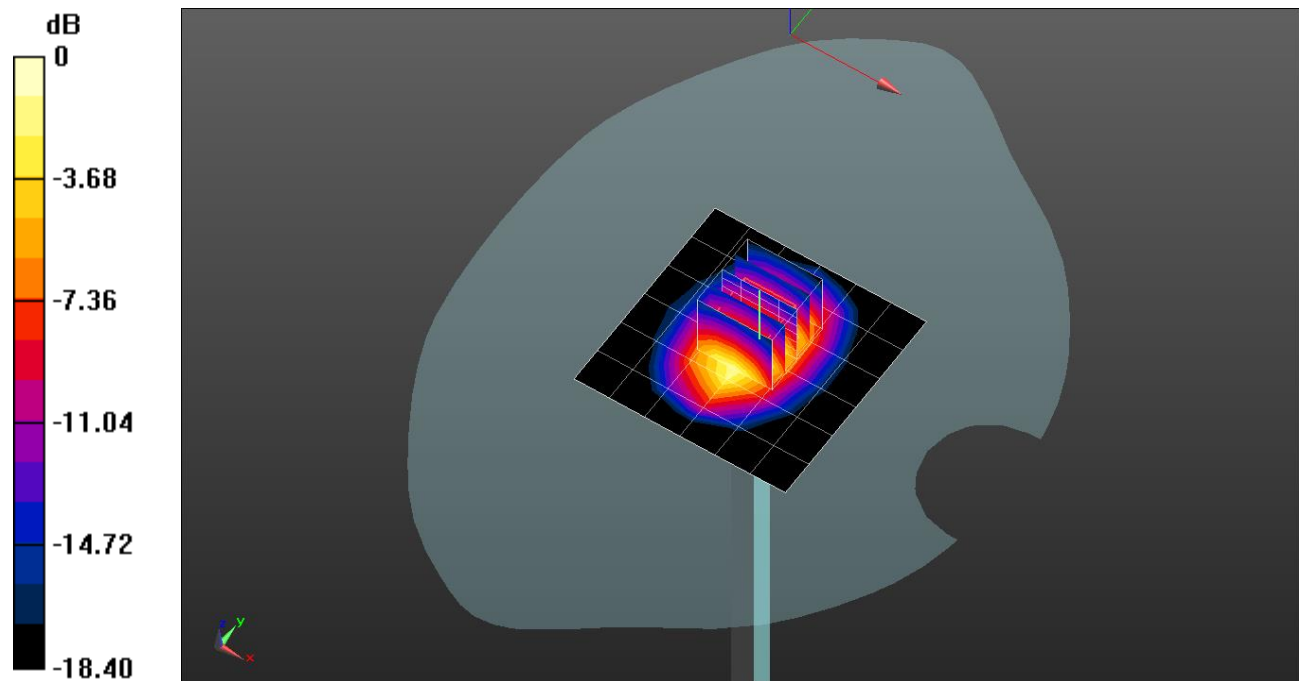
Head/Pin=100 mW/Zoom Scan (5x5x7)/Cube 0: Measurement grid: dx=8mm, dy=8mm, dz=5mm

Reference Value = 63.24 V/m; Power Drift = -0.03 dB

Peak SAR (extrapolated) = 7.66 W/kg

SAR(1 g) = 4.19 W/kg; SAR(10 g) = 2.18 W/kg

Maximum value of SAR (measured) = 5.57 W/kg



0 dB = 5.57 W/kg = 7.46 dBW/kg

20210203_SystemPerformanceCheck-D1900V2 SN 5d199

Frequency: 1900 MHz; Duty Cycle: 1:1

Head/Pin=100 mW/Z Scan (1x1x21): Measurement grid: dx=20mm, dy=20mm, dz=5mm
Maximum value of SAR (measured) = 5.52 W/kg

