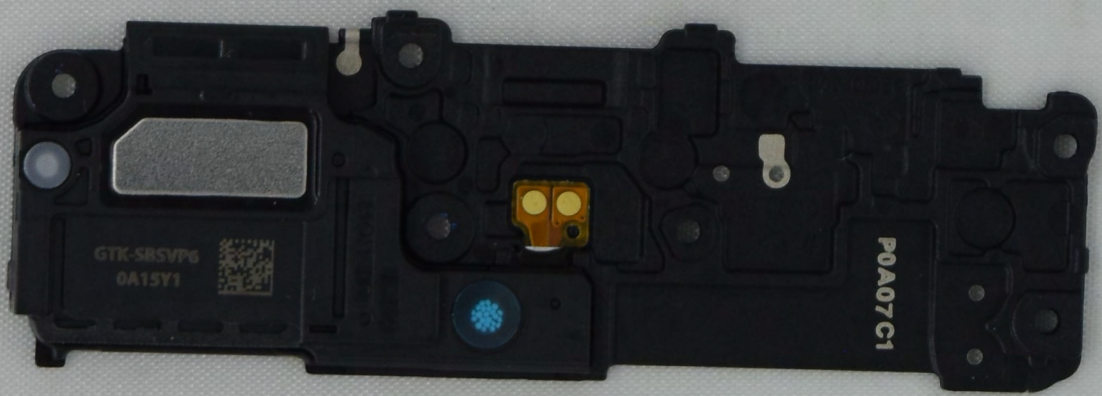
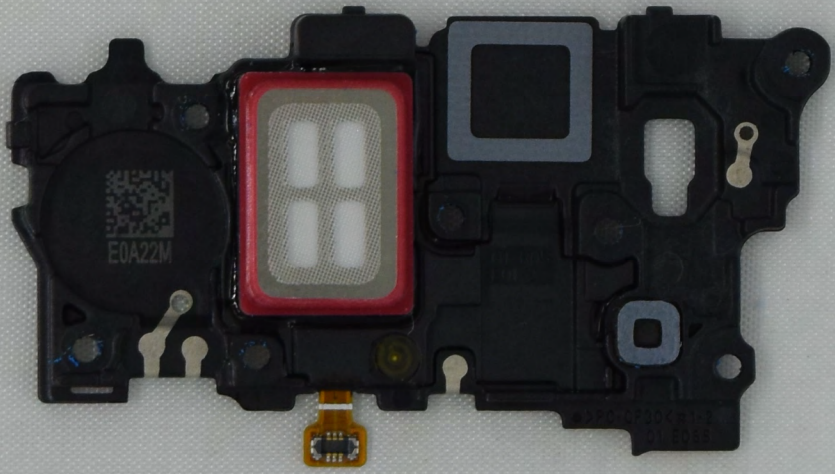


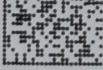
G991B



G991B



2020.09.21
Not for sale
DLAN921AD/--B



SAMSUNG CELL MADE IN CHINA, ASSEMBLED IN CHINA
中國製造/中国制造 制造商: 宁德新能源科技有限公司
Model/型号/型號: EB-XXXXXABY, 製造者/Manufacturer: Ningde AmpereX Technology Limited
Secondary Li-ion Battery / 锂离子電池組/二次鋰電池組, A/S 연락처: 1588-3366
Nominal Voltage / 标称电压 / 標稱電壓 / 電壓: TBD V =, 执行标准: GB 31241-2014
Rated Capacity / 額定容量 / 額定電容量: TBD mAh, TBD Wh, 1ICP6/61/70
Typical Capacity: TBD mAh, TBD Wh, 充電限制电压: TBD V =

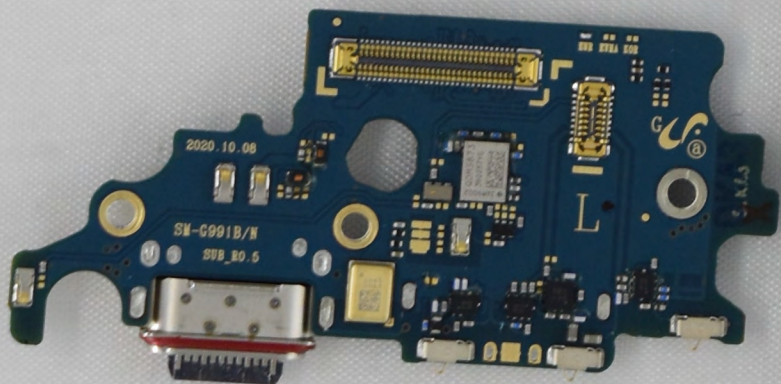
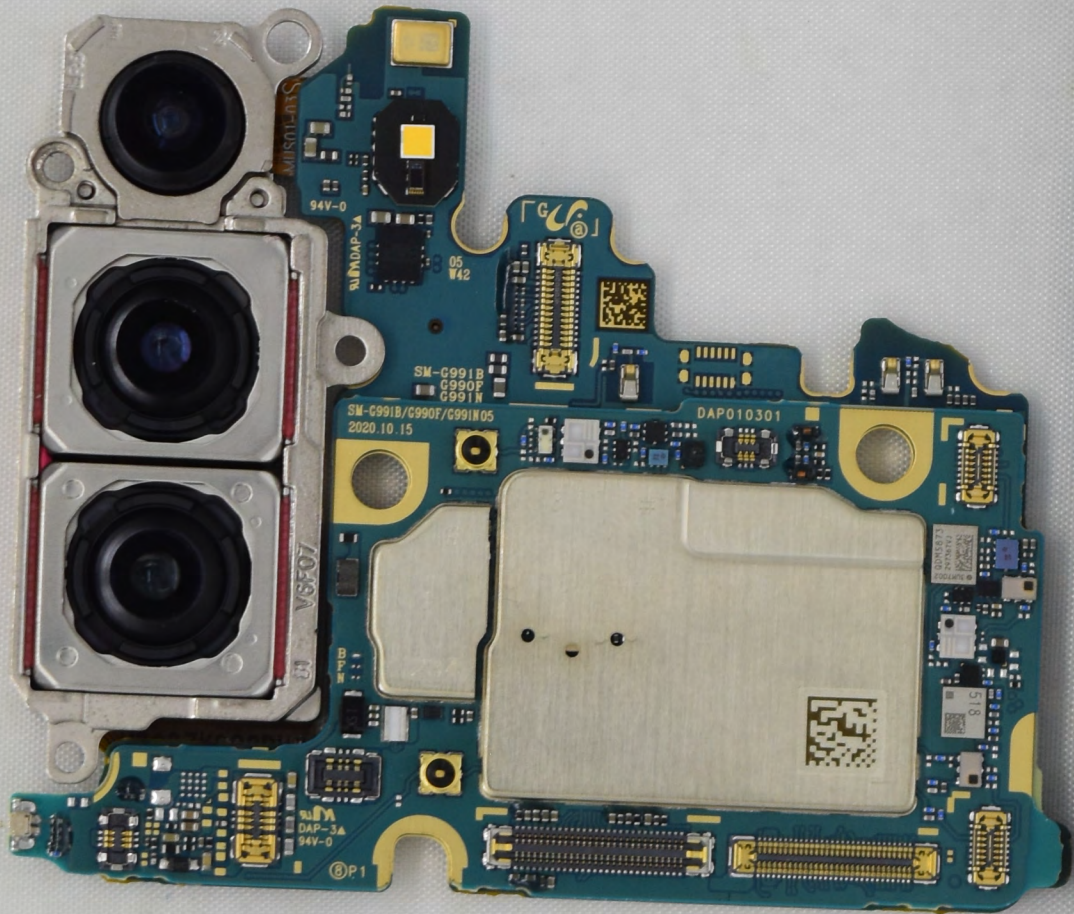
Warning: Do not disassemble, crush, puncture, heat, burn or reuse. Authorized Service Provider Only.
警告: 禁止拆卸、穿刺、燃燒或重複使用。

PS E サムスン電子 ジャパン株式会社
C **RU** US MH29195
ZXXXXXX -XXXXX
www.bis.gov.in

Li-ion 00
IS 16046(Part 2)
/IEC 62133-2

Recycling symbols: No open flame, Recycle, Recycle with arrow, Recycle with number 5, Recycle with infinity symbol.

Other symbols: CQC, R33475, CE, PS E.



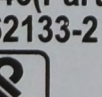
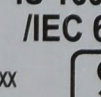
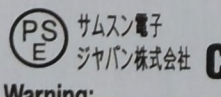
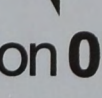
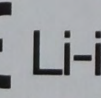
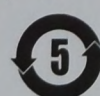
2020.09.21
Not for sale
DLAN921AD/--B



SAMSUNG

CELL MADE IN CHINA, ASSEMBLED IN CHINA
中國製造/中國製造 制造商: 寧德新能源科技有限公司

Model/型号/型號: EB-XXXXXABY, 零件號/Manufacturer: Ningde Amperex Technology Limited
Secondary Li-ion Battery / 鋰離子電池組 / 二次鋰電池組, A/S 연락처: 1588-3366
Nominal Voltage / 標稱電壓 / 標稱電壓 / 정격: TBD V ≡, 執行標準: GB 31241-2014
Rated Capacity / 額定容量 / 額定電容量: TBD mAh, TBD Wh, 1ICP6/61/70
Typical Capacity: TBD mAh, TBD Wh, 充電限制電壓: TBD V ≡



Warning:
Do not disassemble, crush, puncture,
heat, burn or reuse. Authorized Service Provider Only.
警告: 禁止拆卸、穿刺、燃燒或重複使用。

R-XXXXXXX
www.bis.gov.in

