

HAC RF-Emission

Communication System: UID 0, CW (0); Frequency: 835 MHz; Duty Cycle: 1:1

Phantom section: RF Section

DASY5 Configuration:

- Probe: EF3DV3 - SN4066; ConvF(1, 1, 1) @ 835 MHz; Calibrated: 2020-07-24
- Sensor-Surface: (Fix Surface)
- Electronics: DAE4 Sn1447; Calibrated: 2020-03-20
- Phantom: HAC Test Arch with AMCC; Type: SD HAC P01 BB
- Measurement SW: DASY52, Version 52.10 (4);SEMCAD X Version 14.6.14 (7483)

Dipole E-Field measurement 835MHz/835 MHz/Hearing Aid Compatibility Test at 15mm distance (41x361x1): Interpolated grid: dx=0.5000 mm, dy=0.5000 mm

Device Reference Point: 0, 0, -6.3 mm

Reference Value = 120.7 V/m; Power Drift = 0.03 dB

PMR not calibrated. PMF = 1.000 is applied.

E-field emissions = 114.6 V/m

Near-field category: **M4 (AWF 0 dB)**

PMF scaled E-field

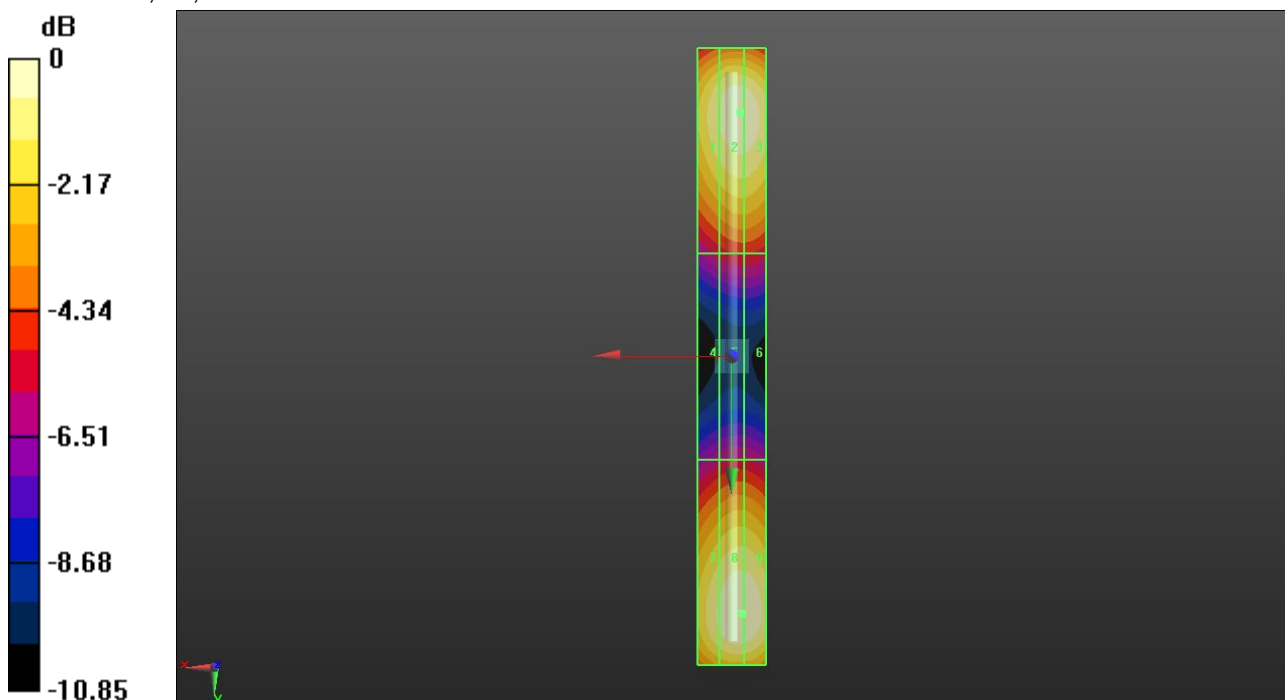
Grid 1 M4 106.3 V/m	Grid 2 M4 113.3 V/m	Grid 3 M4 113.0 V/m
Grid 4 M4 60.84 V/m	Grid 5 M4 64.73 V/m	Grid 6 M4 64.73 V/m
Grid 7 M4 107.4 V/m	Grid 8 M4 114.6 V/m	Grid 9 M4 114.5 V/m

Cursor:

Total = 114.6 V/m

E Category: M4

Location: -3, 75, 8.7 mm



0 dB = 114.6 V/m = 41.18 dBV/m

HAC RF-Emission

Communication System: UID 0, CW (0); Frequency: 1880 MHz; Duty Cycle: 1:1

Phantom section: RF Section

DASY5 Configuration:

- Probe: EF3DV3 - SN4066; ConvF(1, 1, 1) @ 1880 MHz; Calibrated: 2020-07-24
- Sensor-Surface: (Fix Surface)
- Electronics: DAE4 Sn1447; Calibrated: 2020-03-20
- Phantom: HAC Test Arch with AMCC; Type: SD HAC P01 BB
- Measurement SW: DASY52, Version 52.10 (4);SEMCAD X Version 14.6.14 (7483)

Dipole E-Field measurement 1880MHz/1880 MHz/Hearing Aid Compatibility Test at 15mm distance (41x181x1): Interpolated grid: dx=0.5000 mm, dy=0.5000 mm

Device Reference Point: 0, 0, -6.3 mm

Reference Value = 164.7 V/m; Power Drift = 0.01 dB

PMR not calibrated. PMF = 1.000 is applied.

E-field emissions = 92.90 V/m

Near-field category: **M3 (AWF 0 dB)**

PMF scaled E-field

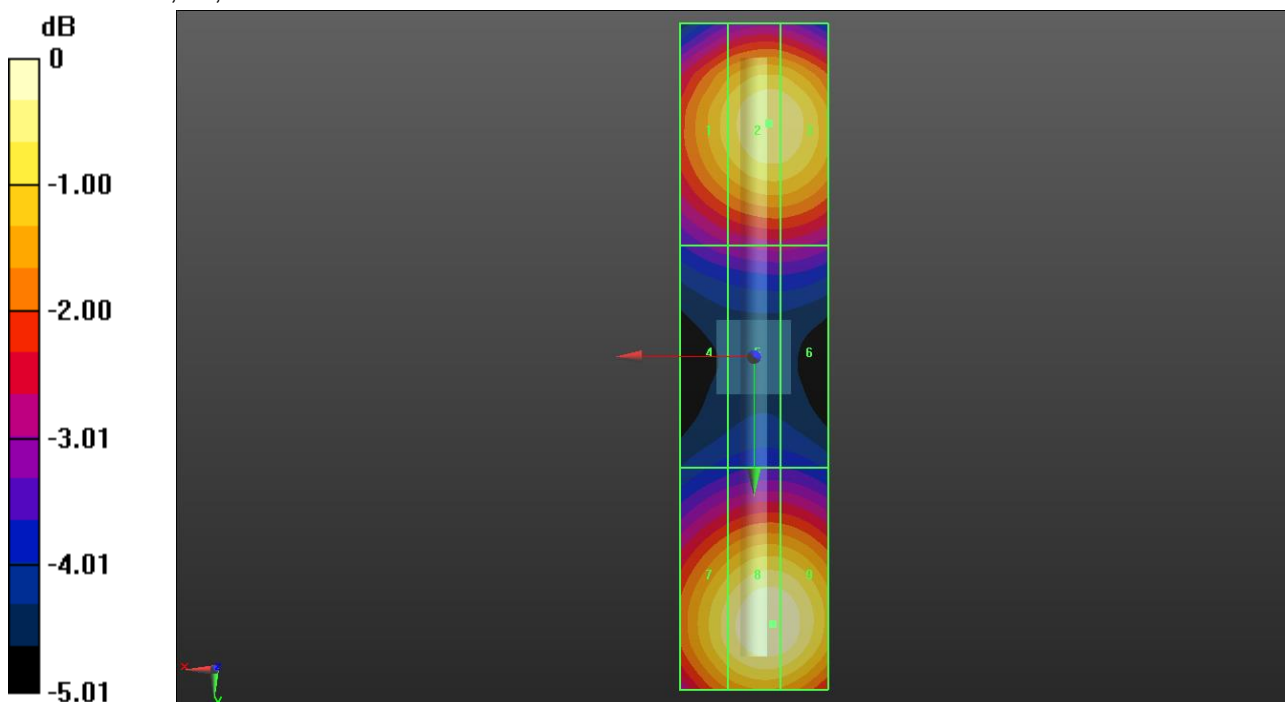
Grid 1 M3 84.48 V/m	Grid 2 M3 89.27 V/m	Grid 3 M3 89.06 V/m
Grid 4 M3 65.20 V/m	Grid 5 M3 66.97 V/m	Grid 6 M3 66.97 V/m
Grid 7 M3 87.84 V/m	Grid 8 M3 92.90 V/m	Grid 9 M3 92.52 V/m

Cursor:

Total = 92.90 V/m

E Category: M3

Location: -2.5, 36, 8.7 mm



0 dB = 92.90 V/m = 39.36 dBV/m

HAC RF-Emission

Communication System: UID 0, CW (0); Frequency: 2450 MHz; Duty Cycle: 1:1

Phantom section: RF Section

DASY5 Configuration:

- Probe: EF3DV3 - SN4066; ConvF(1, 1, 1) @ 2450 MHz; Calibrated: 2020-07-24
- Sensor-Surface: (Fix Surface)
- Electronics: DAE4 Sn1447; Calibrated: 2020-03-20
- Phantom: HAC Test Arch with AMCC; Type: SD HAC P01 BB
- Measurement SW: DASY52, Version 52.10 (4); SEMCAD X Version 14.6.14 (7483)

Dipole E-Field measurement 2450MHz/2450 MHz/Hearing Aid Compatibility Test at 15mm distance (41x181x1): Interpolated grid: dx=0.5000 mm, dy=0.5000 mm

Device Reference Point: 0, 0, -6.3 mm

Reference Value = 78.07 V/m; Power Drift = 0.03 dB

PMR not calibrated. PMF = 1.000 is applied.

E-field emissions = 92.47 V/m

Near-field category: **M3 (AWF 0 dB)**

PMF scaled E-field

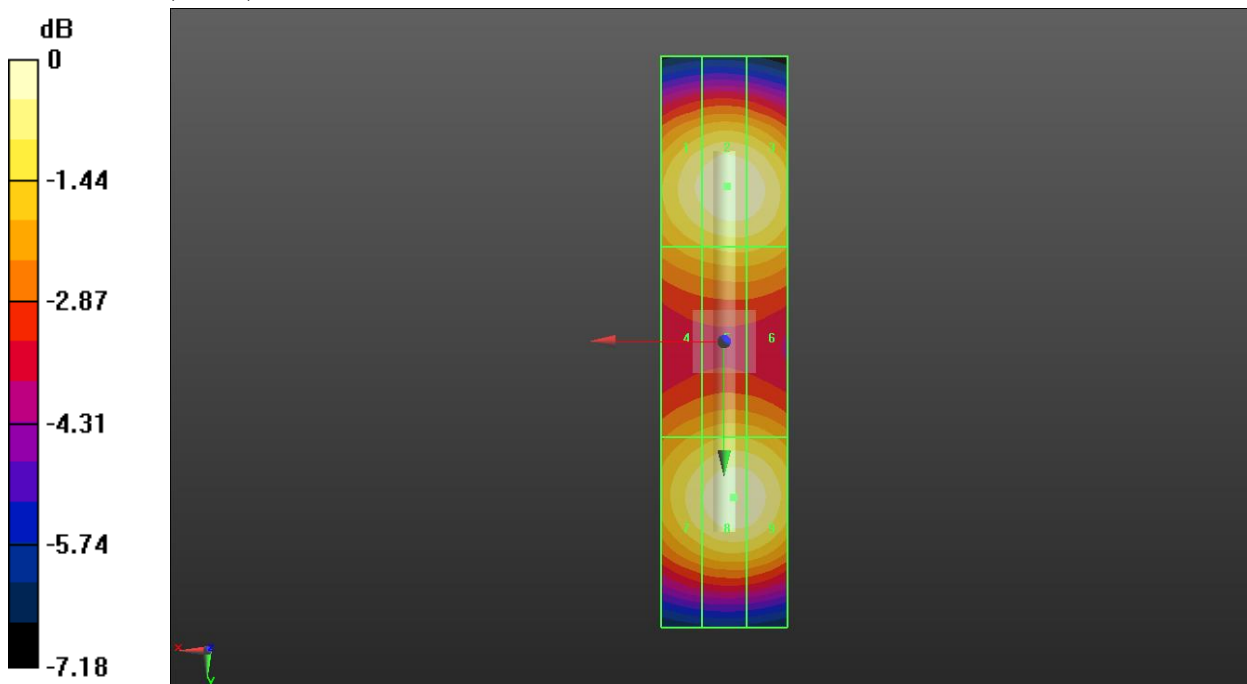
Grid 1 M3 89.00 V/m	Grid 2 M3 92.47 V/m	Grid 3 M3 91.45 V/m
Grid 4 M3 78.10 V/m	Grid 5 M3 80.19 V/m	Grid 6 M3 80.06 V/m
Grid 7 M3 87.30 V/m	Grid 8 M3 91.85 V/m	Grid 9 M3 91.37 V/m

Cursor:

Total = 92.47 V/m

E Category: M3

Location: -0.5, -24.5, 8.7 mm



0 dB = 92.47 V/m = 39.32 dBV/m

HAC RF-Emission

Communication System: UID 0, CW (0); Frequency: 2600 MHz; Duty Cycle: 1:1

Phantom section: RF Section

DASY5 Configuration:

- Probe: EF3DV3 - SN4066; ConvF(1, 1, 1) @ 2600 MHz; Calibrated: 2020-07-24
- Sensor-Surface: (Fix Surface)
- Electronics: DAE4 Sn1447; Calibrated: 2020-03-20
- Phantom: HAC Test Arch with AMCC; Type: SD HAC P01 BB
- Measurement SW: DASY52, Version 52.10 (4);SEMCAD X Version 14.6.14 (7483)

Dipole E-Field measurement 2600MHz/2600 MHz/Hearing Aid Compatibility Test at 15mm distance (41x181x1): Interpolated grid: dx=0.5000 mm, dy=0.5000 mm

Device Reference Point: 0, 0, -6.3 mm

Reference Value = 73.62 V/m; Power Drift = 0.01 dB

PMR not calibrated. PMF = 1.000 is applied.

E-field emissions = 88.06 V/m

Near-field category: **M3 (AWF 0 dB)**

PMF scaled E-field

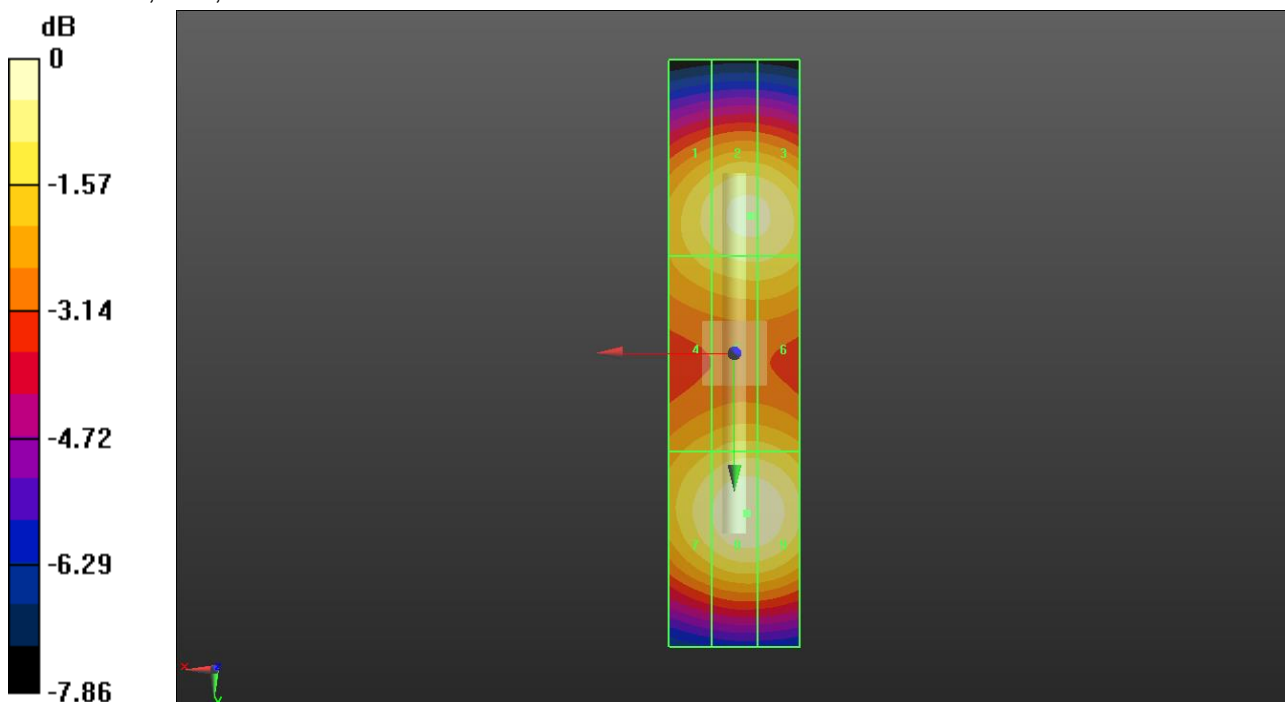
Grid 1 M3 80.37 V/m	Grid 2 M3 84.56 V/m	Grid 3 M3 84.33 V/m
Grid 4 M3 76.53 V/m	Grid 5 M3 79.56 V/m	Grid 6 M3 79.52 V/m
Grid 7 M3 82.98 V/m	Grid 8 M3 88.06 V/m	Grid 9 M3 87.67 V/m

Cursor:

Total = 88.06 V/m

E Category: M3

Location: -2, 24.5, 8.7 mm



0 dB = 88.06 V/m = 38.90 dBV/m