

20201102_SystemPerformanceCheck-D5GHzV2 SN 1209

Frequency: 5750 MHz; Duty Cycle: 1:1; Room Ambient Temperature: 23.0°C; Liquid Temperature: 22.0°C
 Medium parameters used: $f = 5750 \text{ MHz}$; $\sigma = 5.212 \text{ S/m}$; $\epsilon_r = 35.556$; $\rho = 1000 \text{ kg/m}^3$

DASY5 Configuration:

- Area Scan Setting: Find Secondary Maximum Within: 2.0 dB and with a peak SAR value greater than 0.012W/kg
- Averaged Fast SAR: Polynomial fit
- Electronics: DAE4 Sn1468; Calibrated: 2020-08-25
- Probe: EX3DV4 - SN7376; ConvF(4.56, 4.56, 4.56) @ 5750 MHz; Calibrated: 2020-07-31
- Sensor-Surface: 1.4mm (Mechanical Surface Detection)
- Phantom: SAM (20deg probe tilt) with CRP v5.0_Back; Type: QD000P40CD; Serial: TP:1882

Head/5.75 GHz, Pin=100mW/Area Scan (7x7x1): Measurement grid: dx=10mm, dy=10mm
 Maximum value of SAR (measured) = 22.4 W/kg

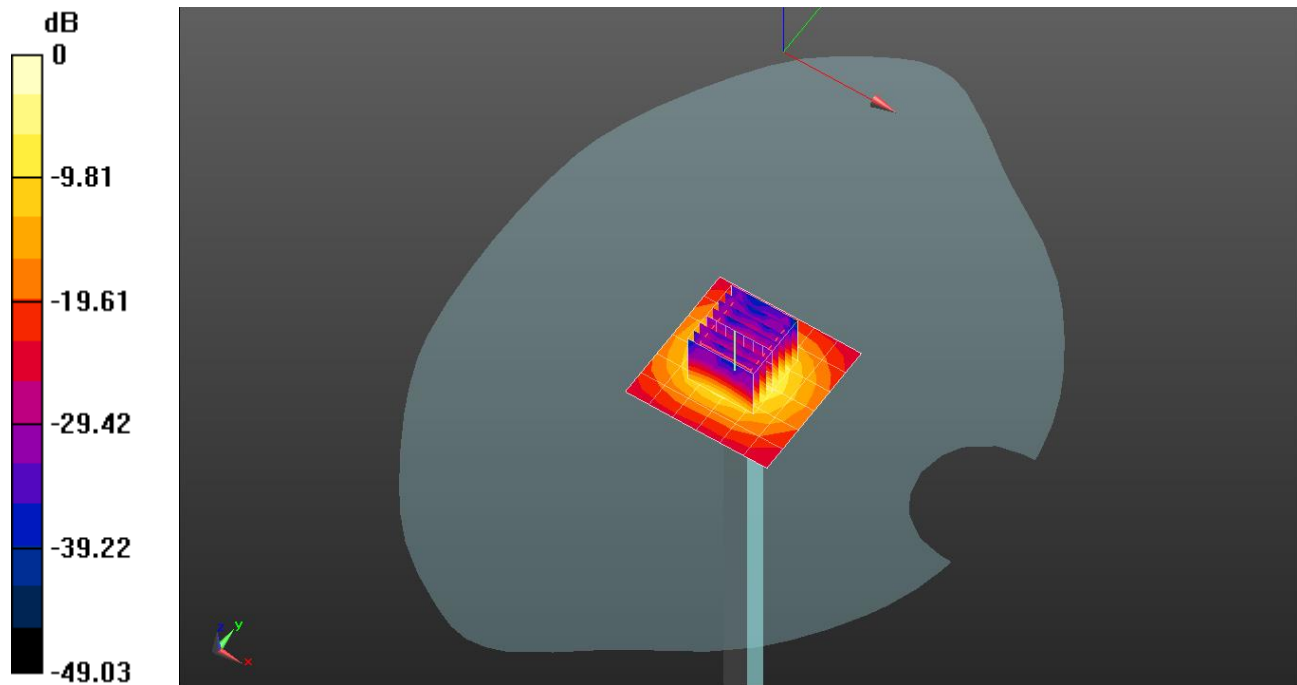
Head/5.75 GHz, Pin=100mW/Zoom Scan (8x8x7)/Cube 0: Measurement grid: dx=4mm, dy=4mm, dz=1.4mm

Reference Value = 72.79 V/m; Power Drift = -0.04 dB

Peak SAR (extrapolated) = 41.0 W/kg

SAR(1 g) = 8.66 W/kg; SAR(10 g) = 2.44 W/kg

Maximum value of SAR (measured) = 20.9 W/kg

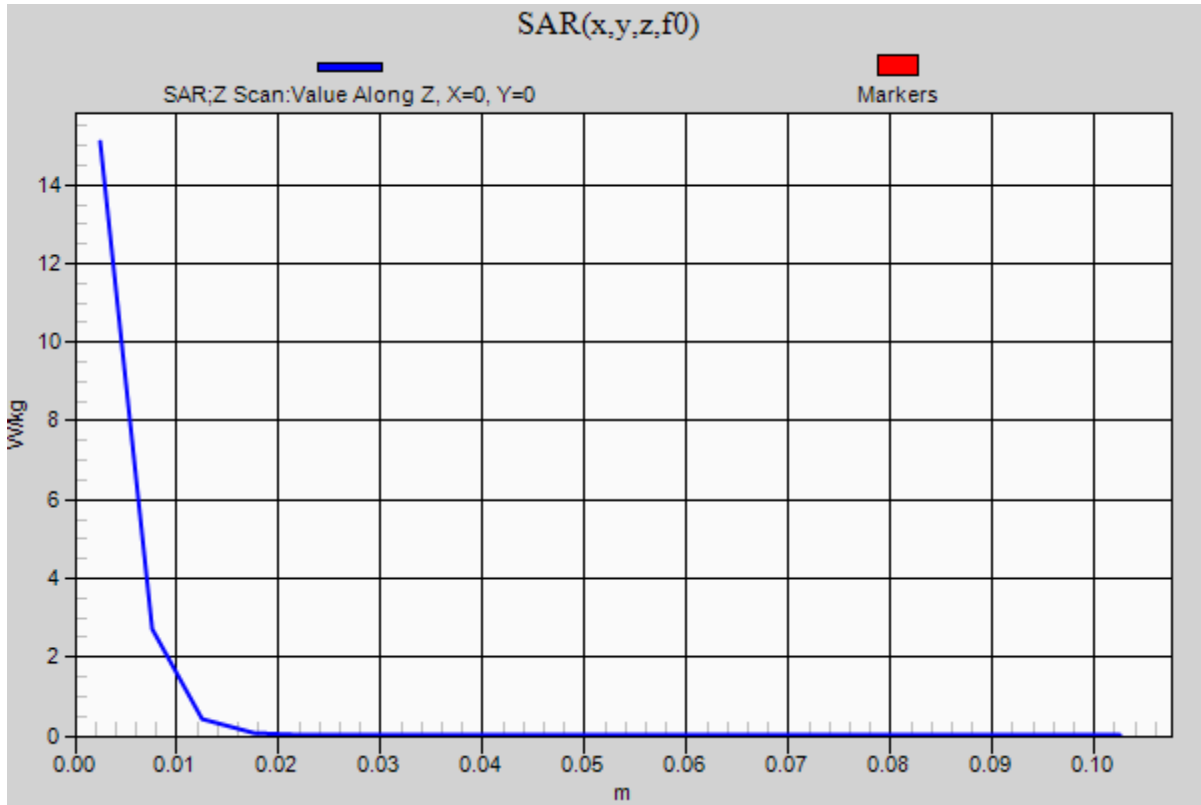


0 dB = 20.9 W/kg = 13.20 dBW/kg

20201102_SystemPerformanceCheck-D5GHzV2 SN 1209

Frequency: 5750 MHz; Duty Cycle: 1:1

Head/5.75 GHz, Pin=100mW/Z Scan (1x1x21): Measurement grid: dx=20mm, dy=20mm, dz=5mm
Maximum value of SAR (measured) = 15.1 W/kg



20201007_SystemPerformanceCheck-D1750V2 SN 1125

Frequency: 1750 MHz; Duty Cycle: 1:1; Room Ambient Temperature: 23.0°C; Liquid Temperature: 22.0°C
 Medium parameters used: $f = 1750$ MHz; $\sigma = 1.362$ S/m; $\epsilon_r = 39.991$; $\rho = 1000$ kg/m³

DASY5 Configuration:

- Area Scan Setting: Find Secondary Maximum Within: 2.0 dB and with a peak SAR value greater than 0.012W/kg
- Averaged Fast SAR: Polynomial fit
- Electronics: DAE4 Sn1494; Calibrated: 2020-07-23
- Probe: EX3DV4 - SN7313; ConvF(8.64, 8.64, 8.64) @ 1750 MHz; Calibrated: 2020-02-25
- Sensor-Surface: 2.5mm (Mechanical Surface Detection)
- Phantom: Twin-SAM V5.0 (Right); Type: QD 000 P40 CD; Serial: 1855

Head/Pin=100 mW/Area Scan (7x7x1): Measurement grid: dx=15mm, dy=15mm

Maximum value of SAR (measured) = 4.50 W/kg

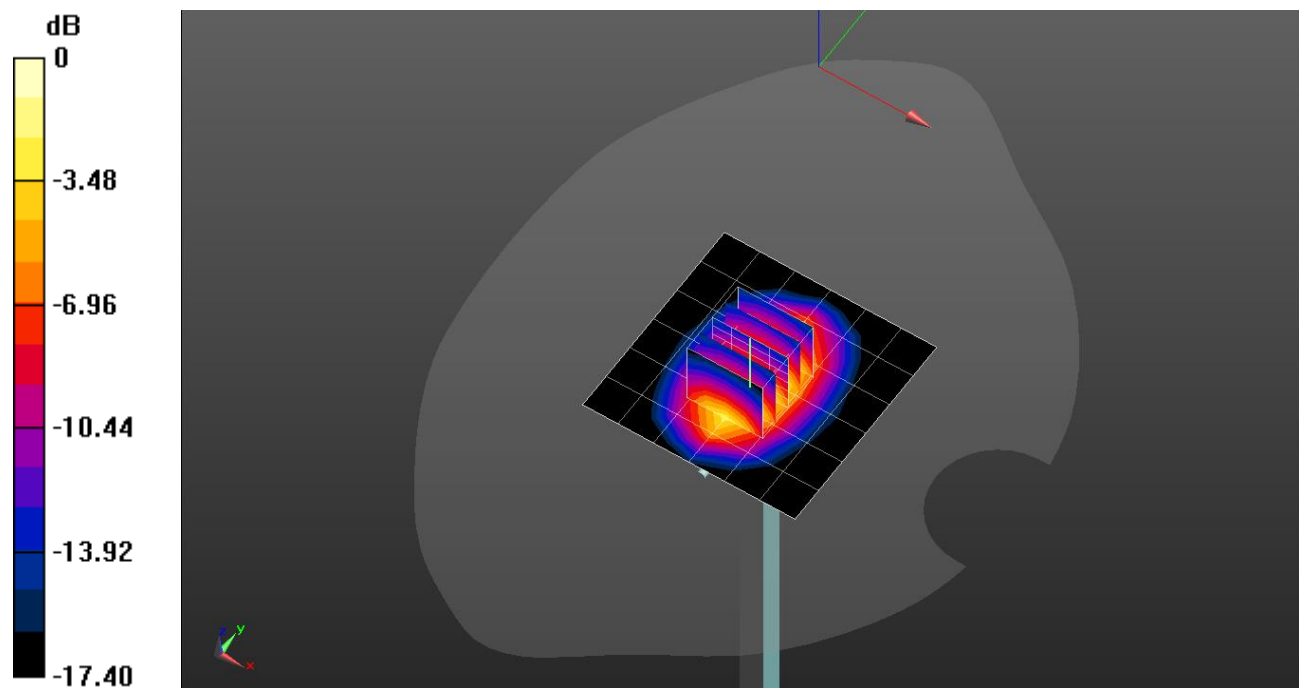
Head/Pin=100 mW/Zoom Scan (5x5x7)/Cube 0: Measurement grid: dx=8mm, dy=8mm, dz=5mm

Reference Value = 58.65 V/m; Power Drift = -0.08 dB

Peak SAR (extrapolated) = 6.02 W/kg

SAR(1 g) = 3.4 W/kg; SAR(10 g) = 1.82 W/kg

Maximum value of SAR (measured) = 4.44 W/kg

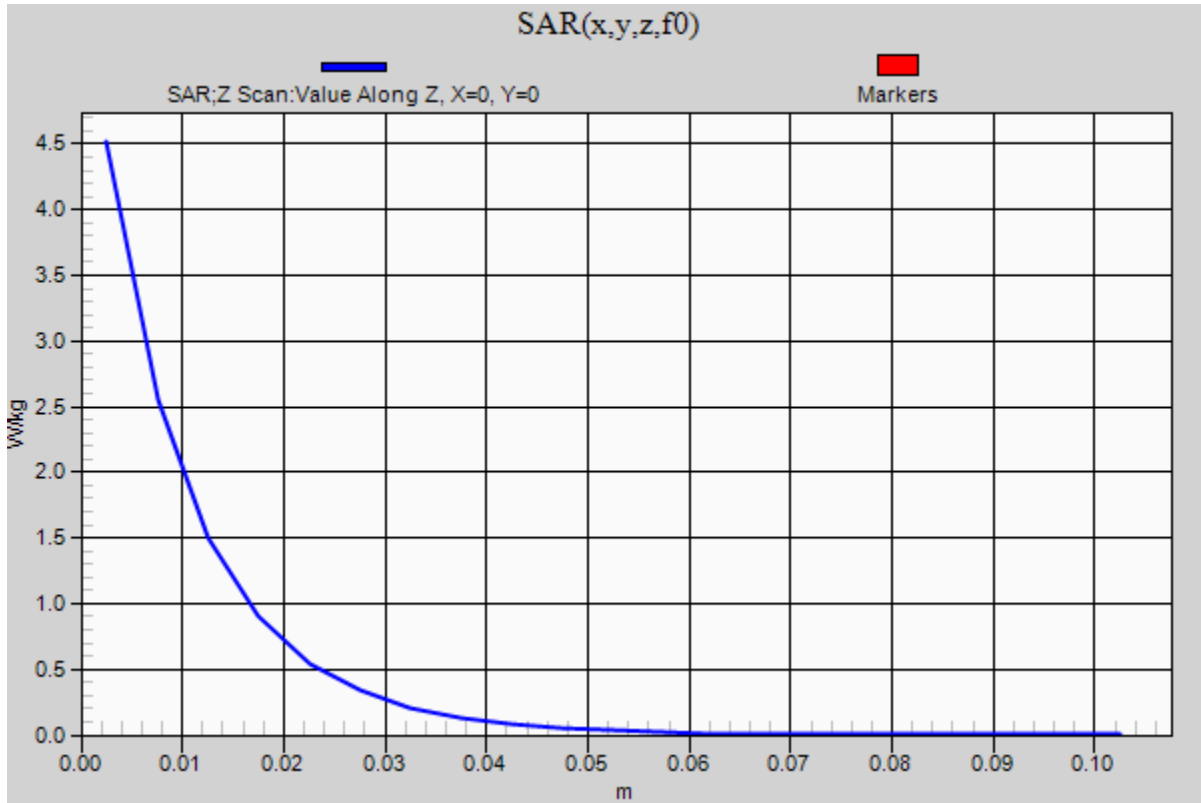


0 dB = 4.44 W/kg = 6.47 dBW/kg

20201007_SystemPerformanceCheck-D1750V2 SN 1125

Frequency: 1750 MHz; Duty Cycle: 1:1

Head/Pin=100 mW/Z Scan (1x1x21): Measurement grid: dx=20mm, dy=20mm, dz=5mm
Maximum value of SAR (measured) = 4.52 W/kg



20201007_SystemPerformanceCheck-D1900V2 SN 5d199

Frequency: 1900 MHz; Duty Cycle: 1:1; Room Ambient Temperature: 23.0°C; Liquid Temperature: 22.0°C

Medium parameters used: $f = 1900$ MHz; $\sigma = 1.437$ S/m; $\epsilon_r = 39.333$; $\rho = 1000$ kg/m³

DASY5 Configuration:

- Area Scan Setting: Find Secondary Maximum Within: 2.0 dB and with a peak SAR value greater than 0.012W/kg
- Averaged Fast SAR: Polynomial fit
- Electronics: DAE4 Sn1494; Calibrated: 2020-07-23
- Probe: EX3DV4 - SN7313; ConvF(8.36, 8.36, 8.36) @ 1900 MHz; Calibrated: 2020-02-25
- Sensor-Surface: 2.5mm (Mechanical Surface Detection)
- Phantom: Twin-SAM V5.0 (Right); Type: QD 000 P40 CD; Serial: 1855

Head/Pin=100 mW/Area Scan (7x7x1): Measurement grid: dx=15mm, dy=15mm

Maximum value of SAR (measured) = 5.07 W/kg

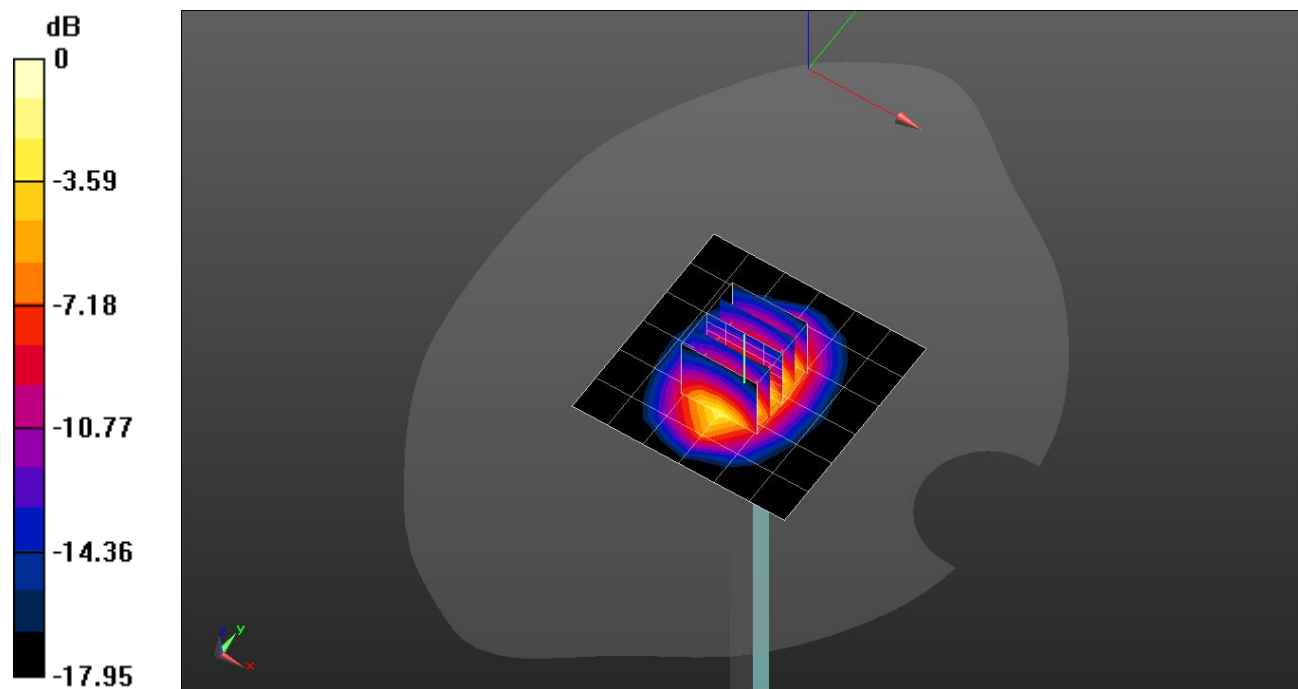
Head/Pin=100 mW/Zoom Scan (5x5x7)/Cube 0: Measurement grid: dx=8mm, dy=8mm, dz=5mm

Reference Value = 60.47 V/m; Power Drift = -0.09 dB

Peak SAR (extrapolated) = 6.81 W/kg

SAR(1 g) = 3.75 W/kg; SAR(10 g) = 1.95 W/kg

Maximum value of SAR (measured) = 5.05 W/kg

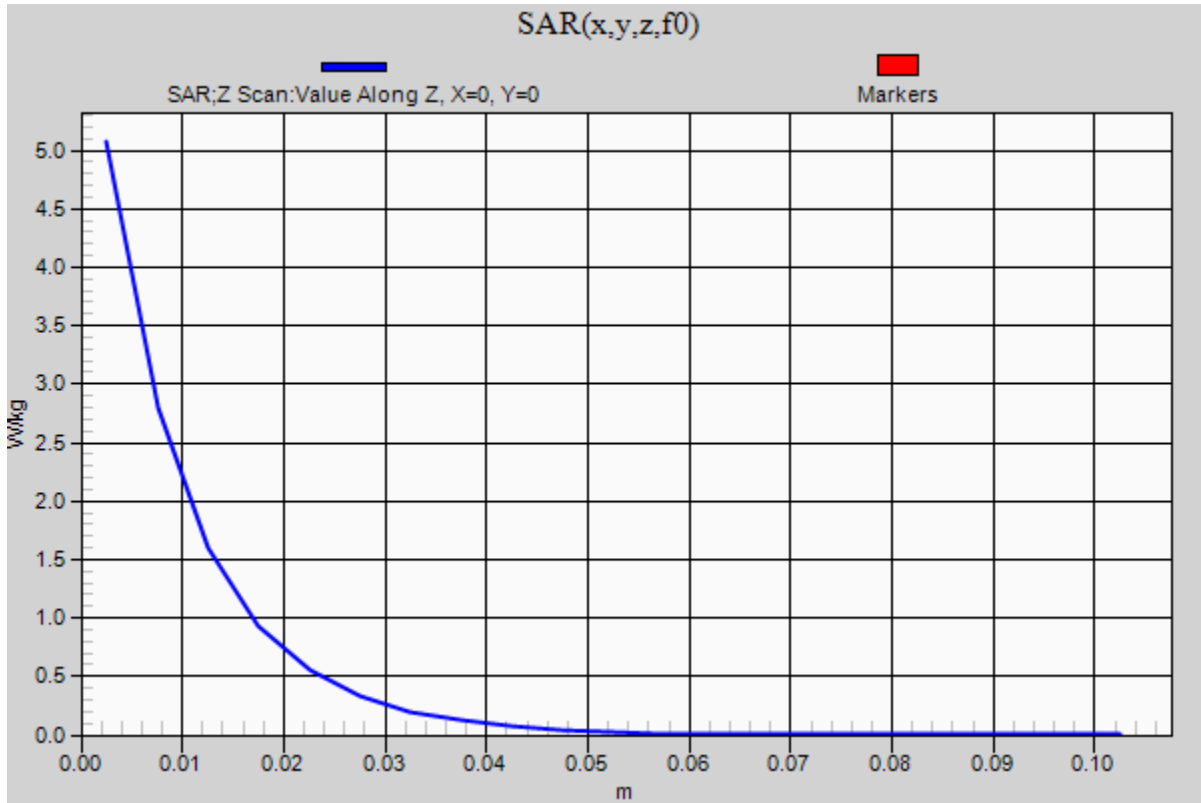


0 dB = 5.05 W/kg = 7.03 dBW/kg

20201007_SystemPerformanceCheck-D1900V2 SN 5d199

Frequency: 1900 MHz; Duty Cycle: 1:1

Head/Pin=100 mW/Z Scan (1x1x21): Measurement grid: dx=20mm, dy=20mm, dz=5mm
Maximum value of SAR (measured) = 5.07 W/kg



20201012_SystemPerformanceCheck-D2600V2 SN 1097

Frequency: 2600 MHz; Duty Cycle: 1:1; Room Ambient Temperature: 23.0°C; Liquid Temperature: 22.0°C

Medium parameters used: $f = 2600$ MHz; $\sigma = 1.982$ S/m; $\epsilon_r = 38.356$; $\rho = 1000$ kg/m³

DASY5 Configuration:

- Area Scan Setting: Find Secondary Maximum Within: 2.0 dB and with a peak SAR value greater than 0.012W/kg
- Averaged Fast SAR: Polynomial fit
- Electronics: DAE4 Sn1494; Calibrated: 2020-07-23
- Probe: EX3DV4 - SN7313; ConvF(7.52, 7.52, 7.52) @ 2600 MHz; Calibrated: 2020-02-25
- Sensor-Surface: 2.5mm (Mechanical Surface Detection)
- Phantom: Twin-SAM V5.0 (Right); Type: QD 000 P40 CD; Serial: 1855

Head/Pin=100 mW/Area Scan (8x8x1): Measurement grid: dx=12mm, dy=12mm

Maximum value of SAR (measured) = 5.79 W/kg

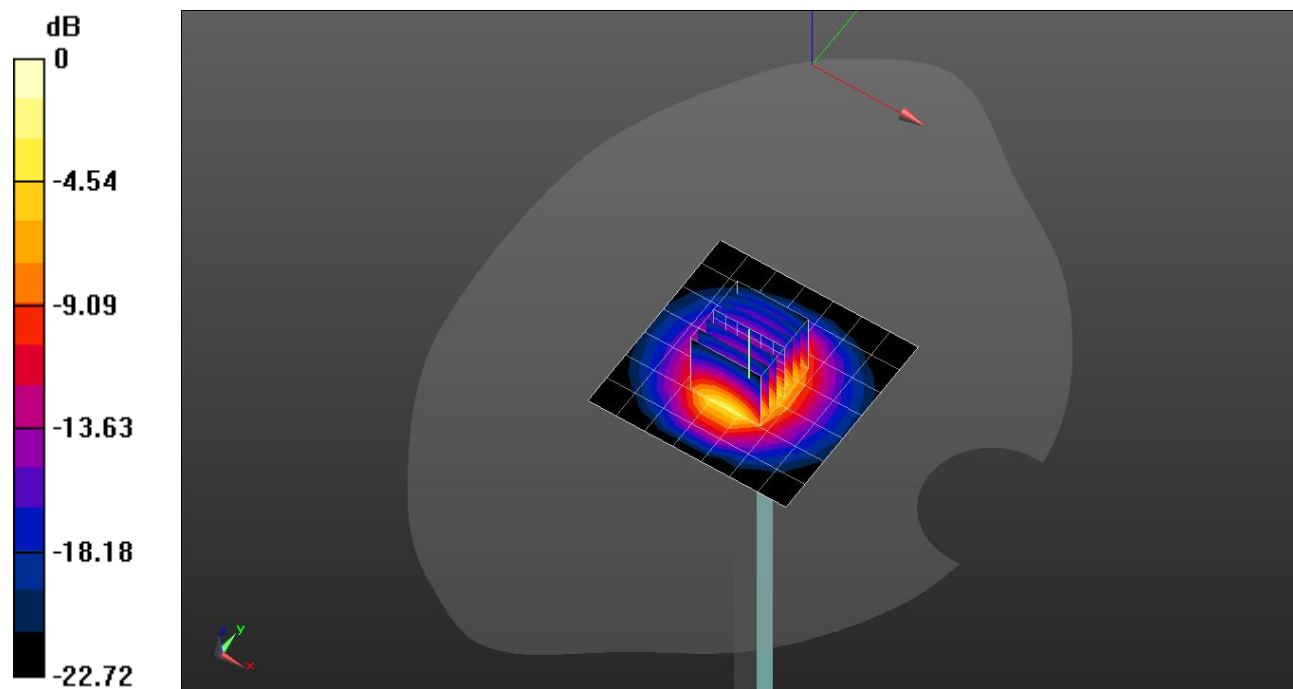
Head/Pin=100 mW/Zoom Scan (7x7x7)/Cube 0: Measurement grid: dx=5mm, dy=5mm, dz=5mm

Reference Value = 62.45 V/m; Power Drift = -0.07 dB

Peak SAR (extrapolated) = 11.3 W/kg

SAR(1 g) = 5.36 W/kg; SAR(10 g) = 2.44 W/kg

Maximum value of SAR (measured) = 7.69 W/kg

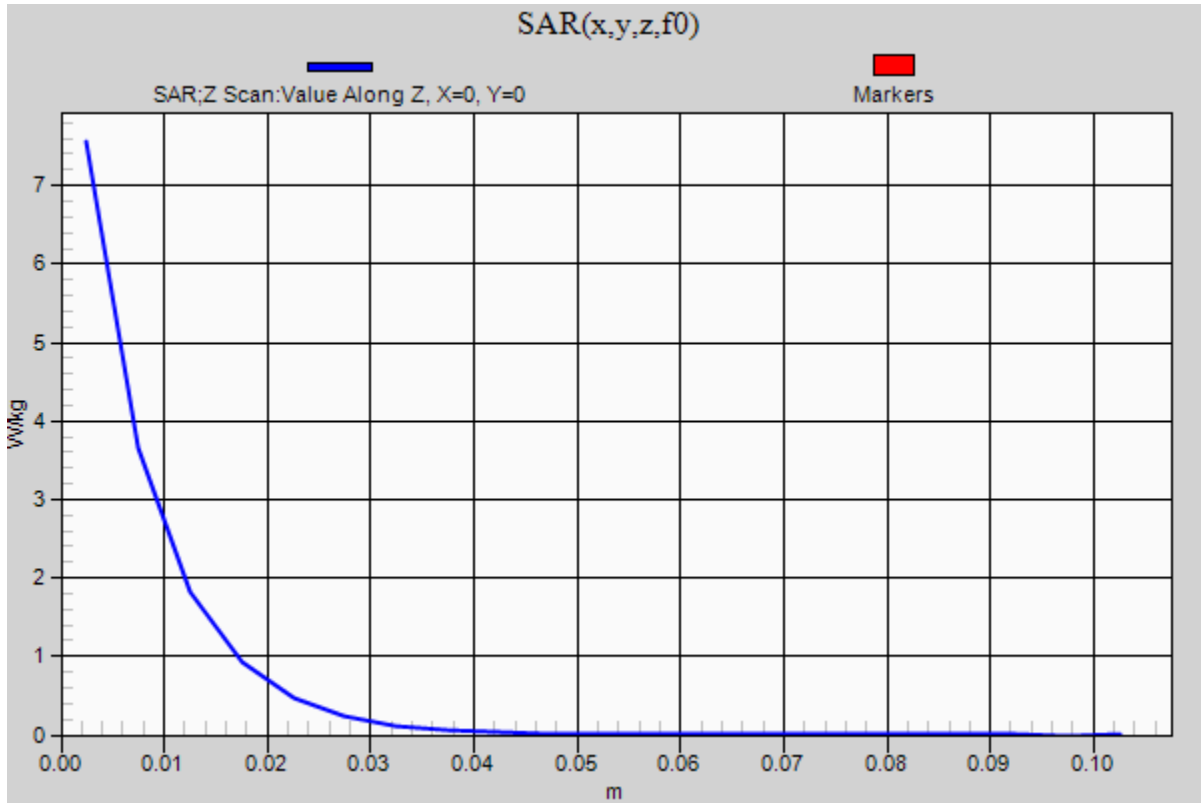


0 dB = 7.69 W/kg = 8.86 dBW/kg

20201012_SystemPerformanceCheck-D2600V2 SN 1097

Frequency: 2600 MHz; Duty Cycle: 1:1

Head/Pin=100 mW/Z Scan (1x1x21): Measurement grid: dx=20mm, dy=20mm, dz=5mm
Maximum value of SAR (measured) = 7.56 W/kg



20201026_SystemPerformanceCheck-D2450V2 SN 939

Frequency: 2450 MHz; Duty Cycle: 1:1; Room Ambient Temperature: 23.0°C; Liquid Temperature: 22.0°C
 Medium parameters used (interpolated): $f = 2450$ MHz; $\sigma = 1.788$ S/m; $\epsilon_r = 38.142$; $\rho = 1000$ kg/m³

DASY5 Configuration:

- Area Scan Setting: Find Secondary Maximum Within: 2.0 dB and with a peak SAR value greater than 0.012W/kg
- Averaged Fast SAR: Polynomial fit
- Electronics: DAE4 Sn1494; Calibrated: 2020-07-23
- Probe: EX3DV4 - SN7313; ConvF(7.76, 7.76, 7.76) @ 2450 MHz; Calibrated: 2020-02-25
- Sensor-Surface: 2.5mm (Mechanical Surface Detection), Sensor-Surface: 1.4mm (Mechanical Surface Detection)
- Phantom: Twin-SAM V5.0 (Right); Type: QD 000 P40 CD; Serial: 1855

Head/Pin=100 mW/Area Scan (8x8x1): Measurement grid: dx=12mm, dy=12mm

Maximum value of SAR (measured) = 5.60 W/kg

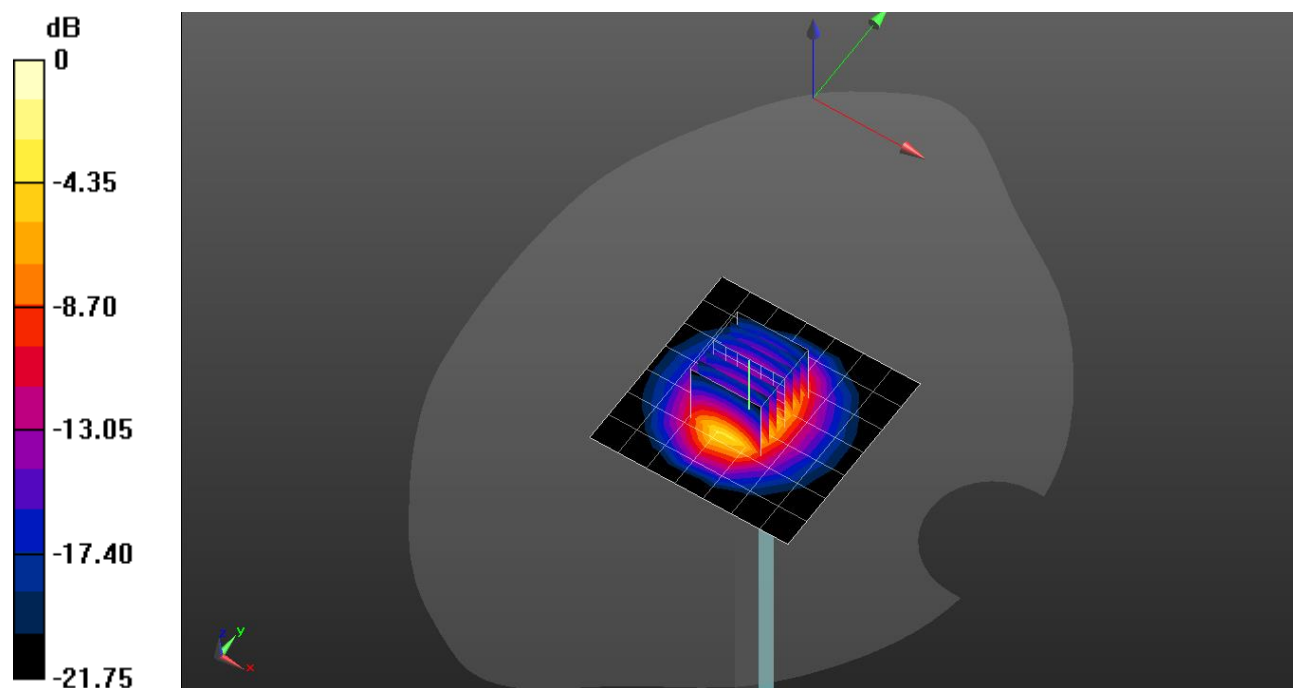
Head/Pin=100 mW/Zoom Scan (7x7x7) (7x7x7)/Cube 0: Measurement grid: dx=5mm, dy=5mm, dz=5mm

Reference Value = 62.59 V/m; Power Drift = 0.00 dB

Peak SAR (extrapolated) = 10.1 W/kg

SAR(1 g) = 4.9 W/kg; SAR(10 g) = 2.29 W/kg

Maximum value of SAR (measured) = 8.21 W/kg

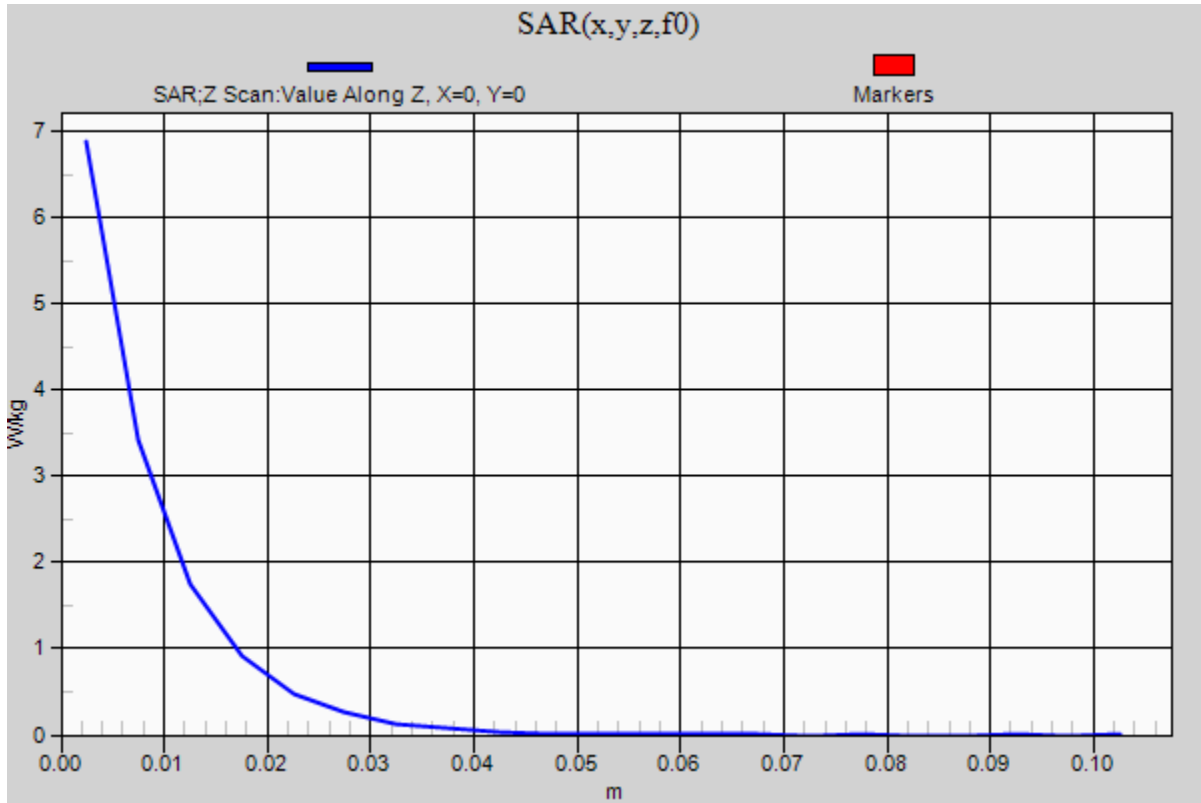


0 dB = 8.21 W/kg = 9.14 dBW/kg

20201026_SystemPerformanceCheck-D2450V2 SN 939

Frequency: 2450 MHz; Duty Cycle: 1:1

Head/Pin=100 mW/Z Scan (1x1x21): Measurement grid: dx=20mm, dy=20mm, dz=5mm
Maximum value of SAR (measured) = 6.89 W/kg



20201108_SystemPerformanceCheck-D1750V2 SN 1125

Frequency: 1750 MHz; Duty Cycle: 1:1; Room Ambient Temperature: 23.0°C; Liquid Temperature: 22.0°C

Medium parameters used: $f = 1750$ MHz; $\sigma = 1.332$ S/m; $\epsilon_r = 40.982$; $\rho = 1000$ kg/m³

DASY5 Configuration:

- Area Scan Setting: Find Secondary Maximum Within: 2.0 dB and with a peak SAR value greater than 0.012W/kg
- Averaged Fast SAR: Polynomial fit
- Electronics: DAE4 Sn1591; Calibrated: 2020-08-25
- Probe: EX3DV4 - SN7330; ConvF(8.9, 8.9, 8.9) @ 1750 MHz; Calibrated: 2020-02-21
- Sensor-Surface: 2.5mm (Mechanical Surface Detection)
- Phantom: SAM Phantom CRP v5.0(Left); Type: QD000P40CD; Serial: TP:1991

Head/Pin=100 mW/Area Scan (7x7x1): Measurement grid: dx=15mm, dy=15mm

Maximum value of SAR (measured) = 4.72 W/kg

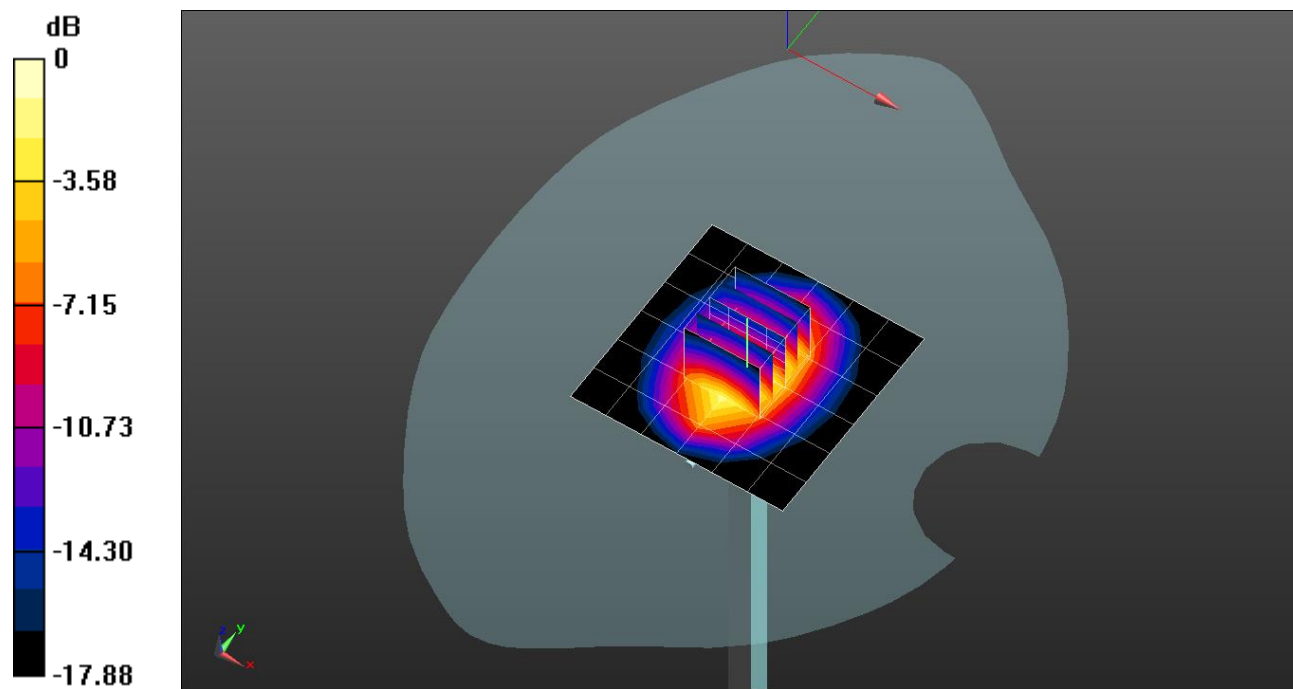
Head/Pin=100 mW/Zoom Scan (5x5x7)/Cube 0: Measurement grid: dx=8mm, dy=8mm, dz=5mm

Reference Value = 60.11 V/m; Power Drift = -0.03 dB

Peak SAR (extrapolated) = 6.51 W/kg

SAR(1 g) = 3.46 W/kg; SAR(10 g) = 1.81 W/kg

Maximum value of SAR (measured) = 4.71 W/kg

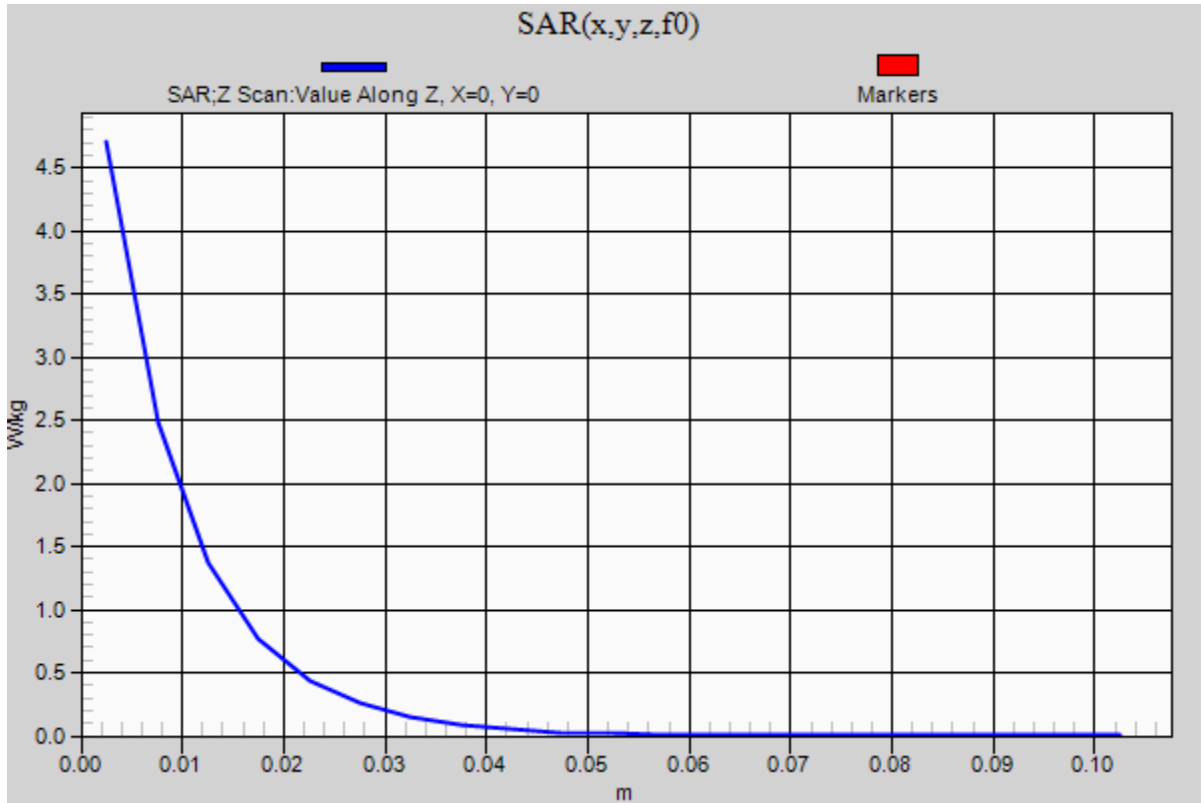


0 dB = 4.71 W/kg = 6.73 dBW/kg

20201108_SystemPerformanceCheck-D1750V2 SN 1125

Frequency: 1750 MHz; Duty Cycle: 1:1

Head/Pin=100 mW/Z Scan (1x1x21): Measurement grid: dx=20mm, dy=20mm, dz=5mm
Maximum value of SAR (measured) = 4.71 W/kg



20201005_SystemPerformanceCheck-D750V3 SN 1122

Frequency: 750 MHz; Duty Cycle: 1:1; Room Ambient Temperature: 23.0°C; Liquid Temperature: 22.0°C
Medium parameters used: $f = 750$ MHz; $\sigma = 0.88$ S/m; $\epsilon_r = 41.658$; $\rho = 1000$ kg/m³

DASY5 Configuration:

- Area Scan Setting: Find Secondary Maximum Within: 2.0 dB and with a peak SAR value greater than 0.012W/kg
- Averaged Fast SAR: Polynomial fit
- Electronics: DAE4 Sn1343; Calibrated: 2020-08-25
- Probe: EX3DV4 - SN3871; ConvF(10.39, 10.39, 10.39) @ 750 MHz; Calibrated: 2020-08-28
- Sensor-Surface: 2.5mm (Mechanical Surface Detection)
- Phantom: SAM (20deg probe tilt) with CRP v5.0; Type: QD000P40CD; Serial: 1751

Head/Pin=100 mW/Area Scan (7x14x1): Measurement grid: dx=15mm, dy=15mm

Maximum value of SAR (measured) = 0.991 W/kg

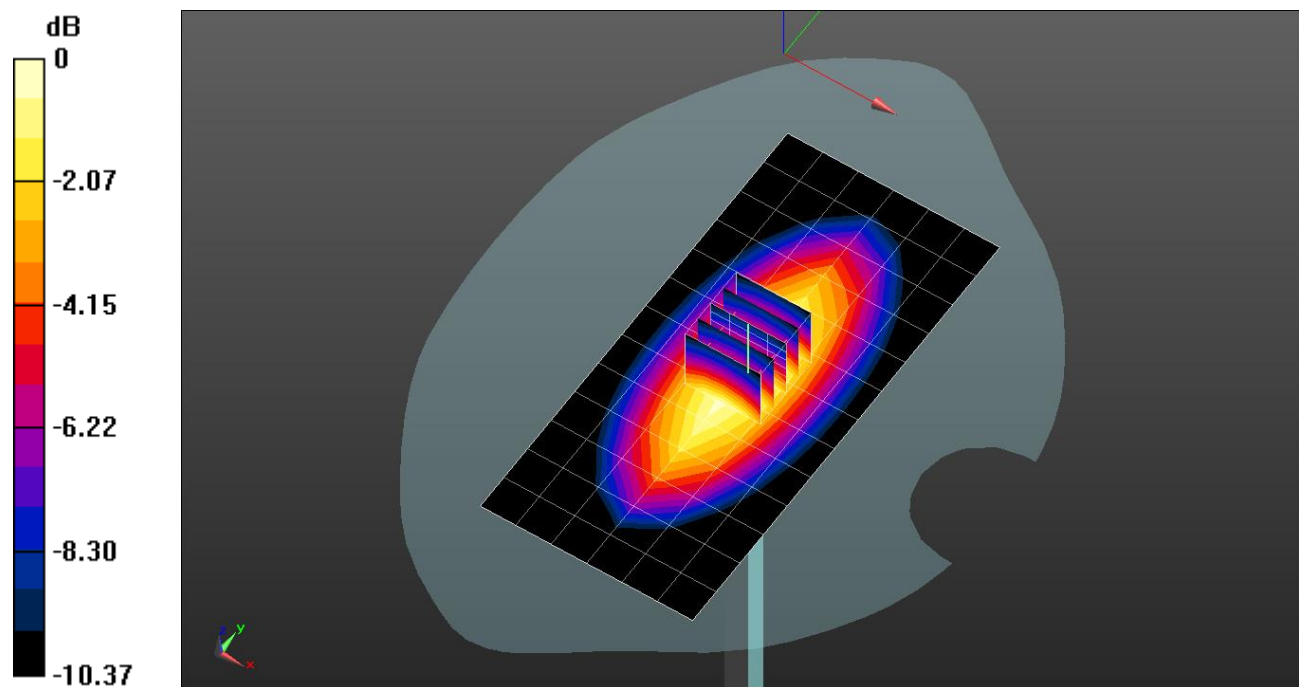
Head/Pin=100 mW/Zoom Scan (5x5x7)/Cube 0: Measurement grid: dx=8mm, dy=8mm, dz=5mm

Reference Value = 33.97 V/m; Power Drift = -0.01 dB

Peak SAR (extrapolated) = 1.23 W/kg

SAR(1 g) = 0.82 W/kg; SAR(10 g) = 0.54 W/kg

Maximum value of SAR (measured) = 0.998 W/kg

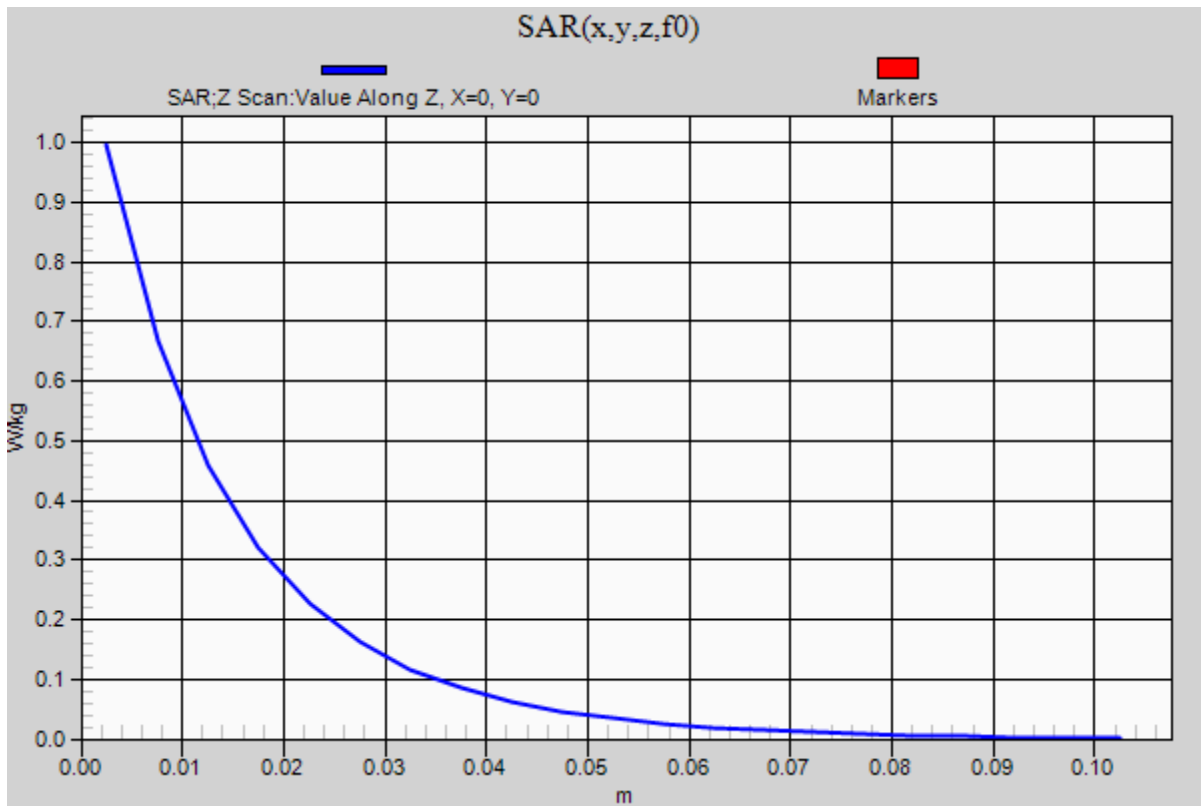


0 dB = 0.998 W/kg = -0.01 dBW/kg

20201005_SystemPerformanceCheck-D750V3 SN 1122

Frequency: 750 MHz; Duty Cycle: 1:1

Head/Pin=100 mW/Z Scan (1x1x21): Measurement grid: dx=20mm, dy=20mm, dz=5mm
Maximum value of SAR (measured) = 0.996 W/kg



20201103_SystemPerformanceCheck-D835V2 SN 4d174

Frequency: 835 MHz; Duty Cycle: 1:1; Room Ambient Temperature: 23.0°C; Liquid Temperature: 22.0°C
Medium parameters used: $f = 835$ MHz; $\sigma = 0.908$ S/m; $\epsilon_r = 41.519$; $\rho = 1000$ kg/m³

DASY5 Configuration:

- Area Scan Setting: Find Secondary Maximum Within: 2.0 dB and with a peak SAR value greater than 0.012W/kg
- Averaged Fast SAR: Polynomial fit
- Electronics: DAE4 Sn1343; Calibrated: 2020-08-25
- Probe: EX3DV4 - SN3871; ConvF(9.83, 9.83, 9.83) @ 835 MHz; Calibrated: 2020-08-28
- Sensor-Surface: 2.5mm (Mechanical Surface Detection)
- Phantom: SAM (20deg probe tilt) with CRP v5.0; Type: QD000P40CD; Serial: 1751

Head/Pin=100 mW/Area Scan (7x13x1): Measurement grid: dx=15mm, dy=15mm

Maximum value of SAR (measured) = 1.12 W/kg

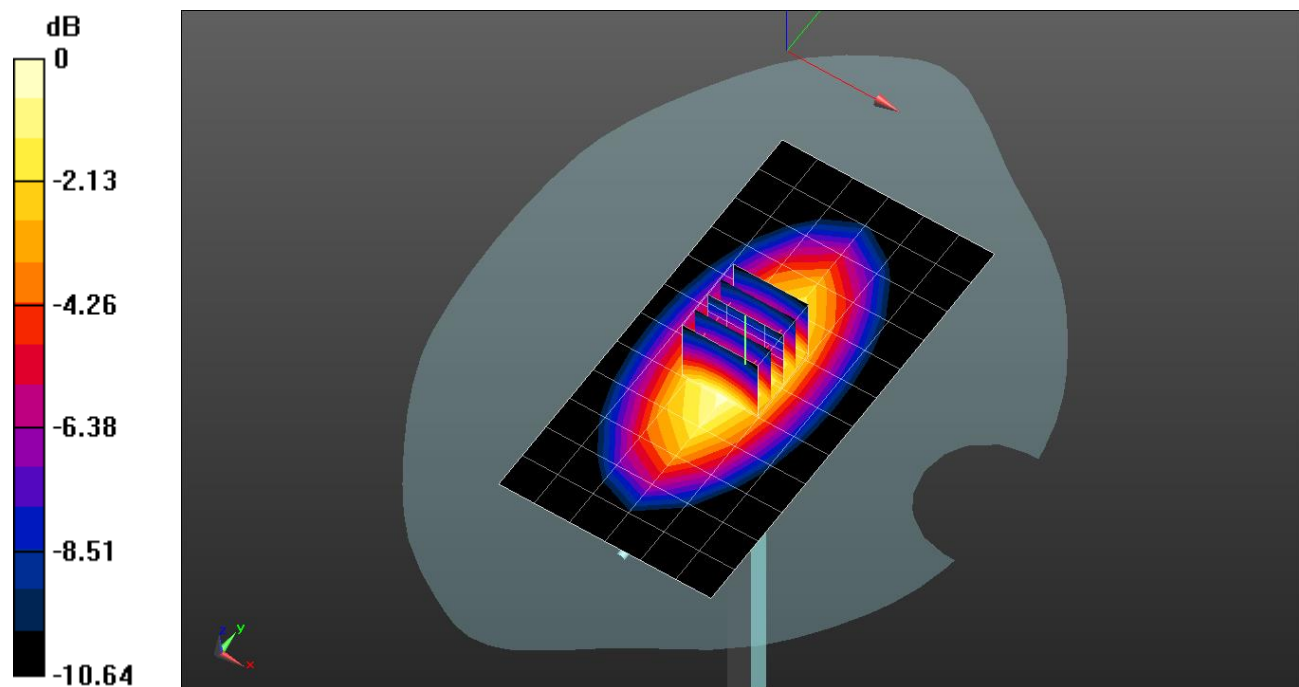
Head/Pin=100 mW/Zoom Scan (5x5x7)/Cube 0: Measurement grid: dx=8mm, dy=8mm, dz=5mm

Reference Value = 35.12 V/m; Power Drift = 0.01 dB

Peak SAR (extrapolated) = 1.39 W/kg

SAR(1 g) = 0.90 W/kg; SAR(10 g) = 0.59 W/kg

Maximum value of SAR (measured) = 1.11 W/kg



0 dB = 1.11 W/kg = 0.45 dBW/kg

20201103_SystemPerformanceCheck-D835V2 SN 4d174

Frequency: 835 MHz; Duty Cycle: 1:1

Head/Pin=100 mW/Z Scan (1x1x21): Measurement grid: dx=20mm, dy=20mm, dz=5mm
Maximum value of SAR (measured) = 1.14 W/kg

