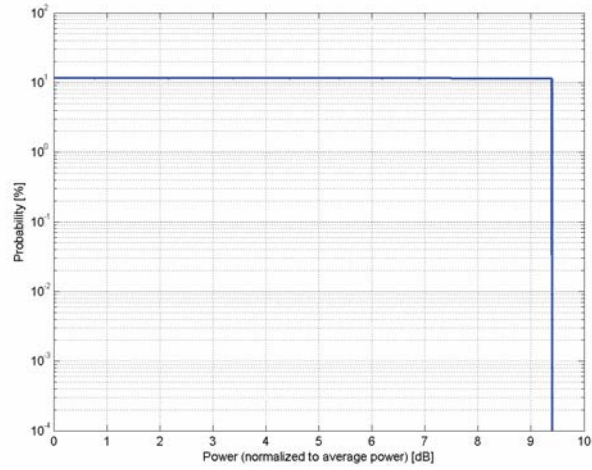


**Calibration Laboratory of
Schmid & Partner
Engineering AG**
Zeughausstrasse 43, 8004 Zurich, Switzerland

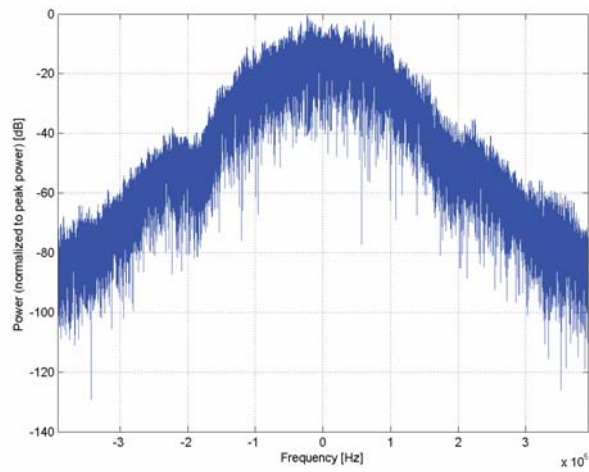
| | |
|-------------------------|--|
| Name: | GSM-FDD (TDMA, GMSK) |
| Group: | GSM |
| UID: | 10021-DAC |
| PAR: ¹ | 9.39 dB |
| MIF: ² | 3.63 dB |
| Standard Reference: | ETSI TS 100 909 V8.9.0 (2005-01) FCC OET KDB 941225, D03 and D04 |
| Category: | Periodic pulsed modulation |
| Modulation: | GMSK |
| Frequency Band: | GSM 450 (450.4 - 457.6 MHz) GSM 480 (478.8 - 486.0 MHz) GSM 710 (698.0 - 716.0 MHz) GSM 750 (747.0 - 763.0 MHz) GSM 850 (824.0 - 849.0 MHz) P-GSM 900 (890.0 - 915.0 MHz) E-GSM 900 (880.0 - 915.0 MHz) R-GSM 900 (876.0 - 915.0 MHz) DCS 1800 (1710.0 - 1785.0 MHz) PCS 1900 (1850.0 - 1910.0 MHz) ER-GSM 900 (873.0 - 915.0 MHz) Validation band (0.0 - 6000.0 MHz) |
| Detailed Specification: | Active Slot: TN0 Data: PN9 continuous Frame: composed out of 8 Slots Multiframe: 26th (IDLE) Frame set blank Slottype & -timing: Normal burst for GMSK |
| Bandwidth: | 0.2 MHz |
| Integration Time: | 120.0 ms |

¹ PAR (0.1%) in accordance with FCC KDB 971168, Section 6.0 "Measurement of the Peak-to-Average Power Ratio (PAPR)"

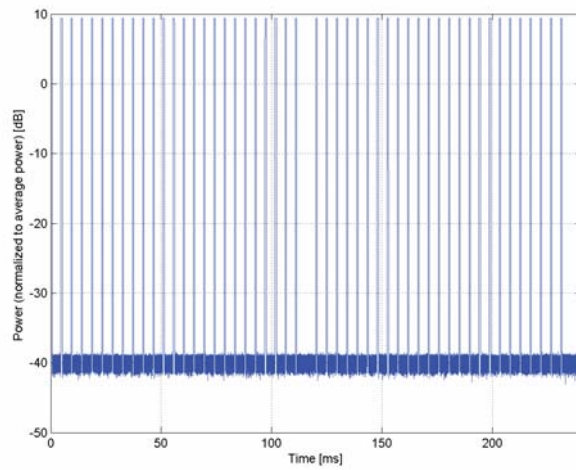
² Modulation Interference Factor (MIF) value valid only in conjunction with advanced probe response linearization calibration for the same communication system (same UID and version).



Complementary Cumulative Distribution Function (CCDF)



Frequency Domain



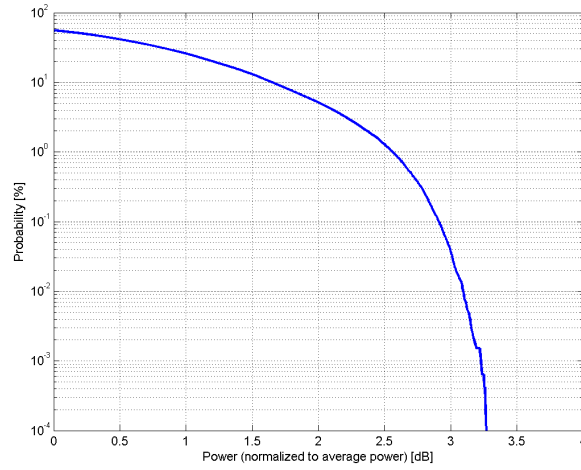
Time Domain

**Calibration Laboratory of
Schmid & Partner
Engineering AG**
Zeughausstrasse 43, 8004 Zurich, Switzerland

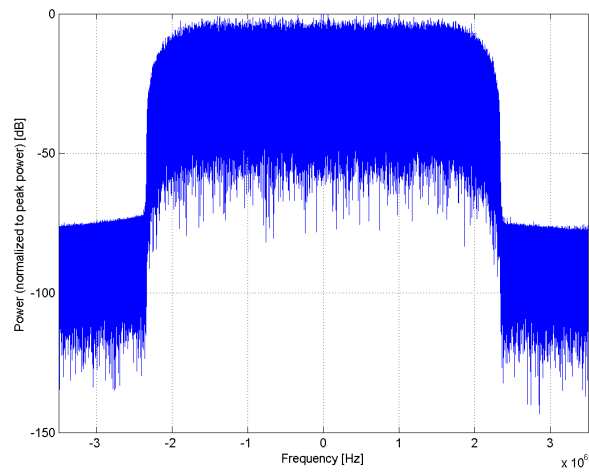
| | |
|-------------------------|---|
| Name: | UMTS-FDD (WCDMA) |
| Group: | WCDMA |
| UID: | 10011-CAB |
| PAR: ¹ | 2.91 dB |
| MIF: ² | -27.23 dB |
| Standard Reference: | 3GPP TS 25.141 Annex A FCC OET KDB 941225 D01 SAR test for 3G devices v02 |
| Category: | Random amplitude modulation |
| Modulation: | QPSK |
| Frequency Band: | Band 1, UTRA/FDD (1920.0-1980.0 MHz, 20000) Band 2, UTRA/FDD (1850.0-1910.0 MHz, 20001) Band 3, UTRA/FDD (1710.0-1785.0 MHz, 20002) Band 4, UTRA/FDD (1710.0-1755.0 MHz, 20003) Band 5, UTRA/FDD (824.0-849.0 MHz, 20004) Band 6, UTRA/FDD (830.0-840.0 MHz, 20005) Band 7, UTRA/FDD (2500.0-2570.0 MHz, 20006) Band 8, UTRA/FDD (880.0-915.0 MHz, 20007) Band 9, UTRA/FDD (1749.9-1784.9 MHz, 20008) Band 10, UTRA/FDD (1710.0-1770.0 MHz, 20009) Band 11, UTRA/FDD (1427.9-1452.9 MHz, 20010) Band 12, UTRA/FDD (698.0-716.0 MHz, 20011) Band 13, UTRA/FDD (777.0-787.0 MHz, 20012) Band 14, UTRA/FDD (788.0-798.0 MHz, 20013) Band 19, UTRA/FDD (830.0-845.0 MHz, 20130) Band 20, UTRA/FDD (832.0-862.0 MHz, 20131) Band 21, UTRA/FDD (1447.9-1462.9 MHz, 20132) Band 22, UTRA/FDD (3410.0-3490.0 MHz, 20217) Band 25, UTRA/FDD (1850.0-1915.0 MHz, 20218) Band 26, UTRA/FDD (814.0-849.0 MHz, 20219) |
| Detailed Specification: | Dedicated Channel Type: RMC Bitrate: 12.2 kbps DPDCH: 60 kbps DPCCH: 15 kbps DPCCH/DPDCH power ratio: -5.46 dB |
| Bandwidth: | 5.0 MHz |
| Integration Time: | 100.0 ms |

¹ PAR (0.1%) in accordance with FCC KDB 971168, Section 6.0 "Measurement of the Peak-to-Average Power Ratio (PAPR)"

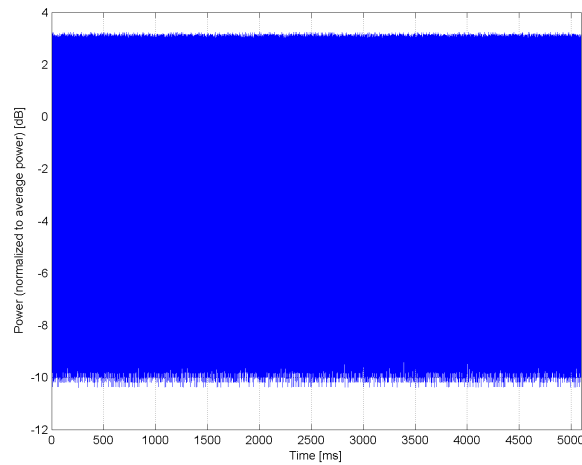
² Modulation Interference Factor (MIF) value valid only in conjunction with advanced probe response linearization calibration for the same communication system (same UID and version).



Complementary Cumulative Distribution Function (CCDF)



Frequency Domain



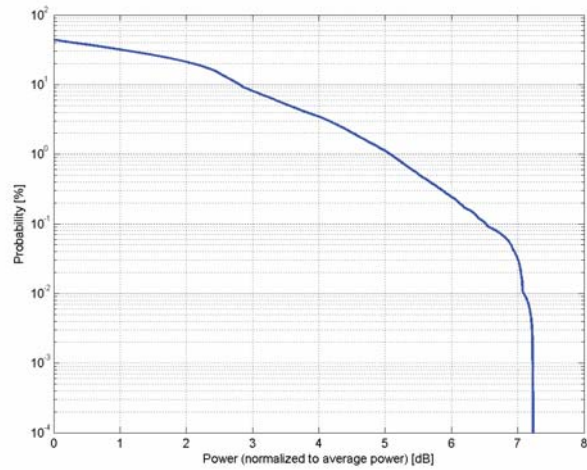
Time Domain

**Calibration Laboratory of
Schmid & Partner
Engineering AG**
Zeughausstrasse 43, 8004 Zurich, Switzerland

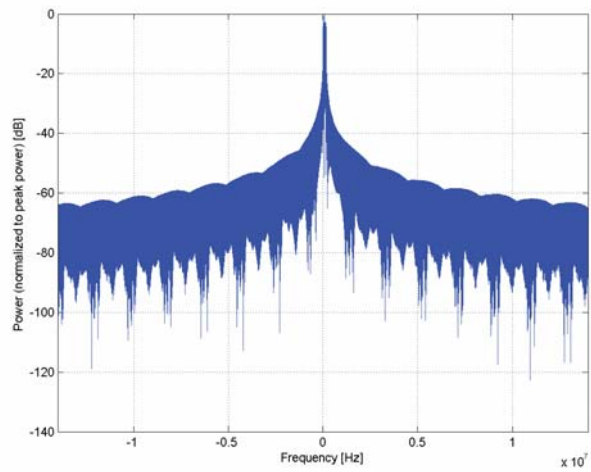
| | |
|-------------------------|--|
| Name: | LTE-FDD (SC-FDMA, 1 RB, 20 MHz, 16-QAM) |
| Group: | LTE-FDD |
| UID: | 10170-CAE |
| PAR: ¹ | 6.52 dB |
| MIF: ² | -9.76 dB |
| Standard Reference: | 3GPP / ETSI TS 136.101 V8.4.0 3GPP / ETSI TS 136.213 V8.4.0 FCC OET KDB 941225 D05 SAR for LTE Devices v01 Random amplitude modulation |
| Category: | 16-QAM |
| Modulation: | 16-QAM |
| Frequency Band: | Band 1, E-UTRA/FDD (1920.0 - 1980.0 MHz) Band 2, E-UTRA/FDD (1850.0 - 1910.0 MHz) Band 3, E-UTRA/FDD (1710.0 - 1785.0 MHz) Band 4, E-UTRA/FDD (1710.0 - 1755.0 MHz) Band 7, E-UTRA/FDD (2500.0 - 2570.0 MHz) Band 9, E-UTRA/FDD (1749.9 - 1784.9 MHz) Band 10, E-UTRA/FDD (1710.0 - 1770.0 MHz) Band 20, E-UTRA/FDD (832.0 - 862.0 MHz) Band 22, E-UTRA/FDD (3410.0 - 3490.0 MHz) Band 23, E-UTRA/FDD (2000.0 - 2020.0 MHz) Band 25, E-UTRA/FDD (1850.0 - 1915.0 MHz) Band 28 E-UTRA/FDD (703.0 - 748.0 MHz) Band 65, E-UTRA/FDD (1920.0 - 2010.0 MHz) Band 66, E-UTRA/FDD (1710.0 - 1780.0 MHz) Band 70, E-UTRA/FDD (1695.0 - 1710.0 MHz) Band 71, E-UTRA/FDD (663.0 - 698.0 MHz) Band 74, E-UTRA/FDD (1427.0 - 1470.0 MHz) Validation band (0.0 - 6000.0 MHz) |
| Detailed Specification: | Modulation Scheme: SC-FDMA Number of PUSCHs: 1 Settings for Subframe #0 to #9: Modulation Scheme: 16QAM Data Type: UL-SCH Number RB: 1 Transport Block Size: 256 TBS Index: 14 MCS Index: 15 Data Type: PN9 |
| Bandwidth: | 20.0 MHz |
| Integration Time: | 10.0 ms |

¹ PAR (0.1%) in accordance with FCC KDB 971168, Section 6.0 "Measurement of the Peak-to-Average Power Ratio (PAPR)"

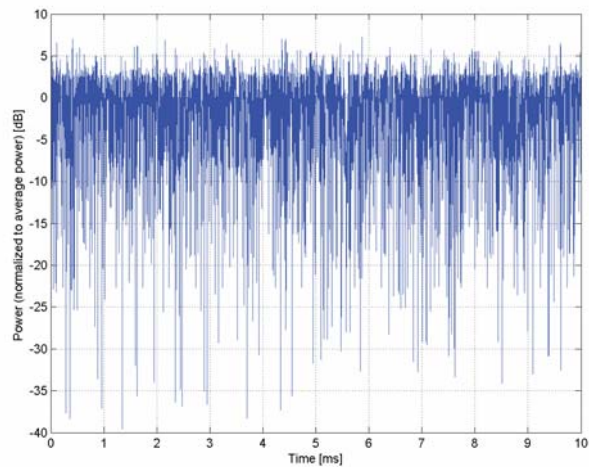
² Modulation Interference Factor (MIF) value valid only in conjunction with advanced probe response linearization calibration for the same communication system (same UID and version).



Complementary Cumulative Distribution Function (CCDF)



Frequency Domain



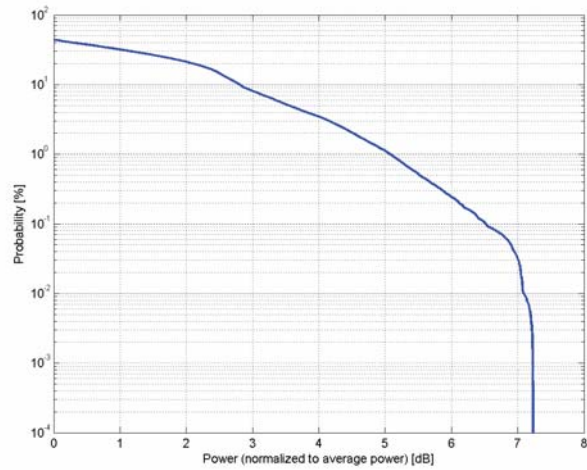
Time Domain

**Calibration Laboratory of
Schmid & Partner
Engineering AG**
Zeughausstrasse 43, 8004 Zurich, Switzerland

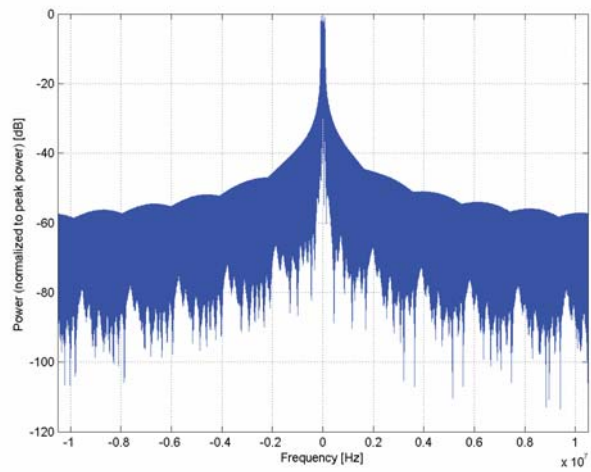
| | |
|-------------------------|--|
| Name: | LTE-FDD (SC-FDMA, 1 RB, 15 MHz, 16-QAM) |
| Group: | LTE-FDD |
| UID: | 10182-CAE |
| PAR: ¹ | 6.52 dB |
| MIF: ² | -9.76 dB |
| Standard Reference: | 3GPP / ETSI TS 136.101 V8.4.0 3GPP / ETSI TS 136.213 V8.4.0 FCC OET KDB 941225 D05 SAR for LTE Devices v01 Random amplitude modulation |
| Category: | 16-QAM |
| Modulation: | 16-QAM |
| Frequency Band: | Band 1, E-UTRA/FDD (1920.0 - 1980.0 MHz) Band 2, E-UTRA/FDD (1850.0 - 1910.0 MHz) Band 3, E-UTRA/FDD (1710.0 - 1785.0 MHz) Band 4, E-UTRA/FDD (1710.0 - 1755.0 MHz) Band 7, E-UTRA/FDD (2500.0 - 2570.0 MHz) Band 9, E-UTRA/FDD (1749.9 - 1784.9 MHz) Band 10, E-UTRA/FDD (1710.0 - 1770.0 MHz) Band 18, E-UTRA/FDD (815.0 - 830.0 MHz) Band 19, E-UTRA/FDD (830.0 - 845.0 MHz) Band 20, E-UTRA/FDD (832.0 - 862.0 MHz) Band 21, E-UTRA/FDD (1447.9 - 1462.9 MHz) Band 22, E-UTRA/FDD (3410.0 - 3490.0 MHz) Band 23, E-UTRA/FDD (2000.0 - 2020.0 MHz) Band 25, E-UTRA/FDD (1850.0 - 1915.0 MHz) Band 26 E-UTRA/FDD (814.0 - 849.0 MHz) Band 28 E-UTRA/FDD (703.0 - 748.0 MHz) Band 65, E-UTRA/FDD (1920.0 - 2010.0 MHz) Band 66, E-UTRA/FDD (1710.0 - 1780.0 MHz) Band 68, E-UTRA/FDD (698.0 - 728.0 MHz) Band 70, E-UTRA/FDD (1695.0 - 1710.0 MHz) Band 71, E-UTRA/FDD (663.0 - 698.0 MHz) Band 74, E-UTRA/FDD (1427.0 - 1470.0 MHz) Validation band (0.0 - 6000.0 MHz) |
| Detailed Specification: | Modulation Scheme: SC-FDMA Number of PUSCHs: 1 Settings for Subframe #0 to #9: Modulation Scheme: 16QAM Data Type: UL-SCH Number RB: 1 Transport Block Size: 256 TBS Index: 14 MCS Index: 15 Data Type: PN9 |
| Bandwidth: | 15.0 MHz |
| Integration Time: | 10.0 ms |

¹ PAR (0.1%) in accordance with FCC KDB 971168, Section 6.0 "Measurement of the Peak-to-Average Power Ratio (PAPR)"

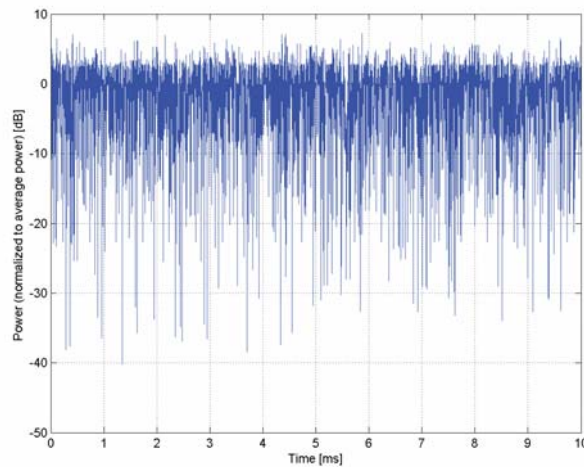
² Modulation Interference Factor (MIF) value valid only in conjunction with advanced probe response linearization calibration for the same communication system (same UID and version).



Complementary Cumulative Distribution Function (CCDF)



Frequency Domain



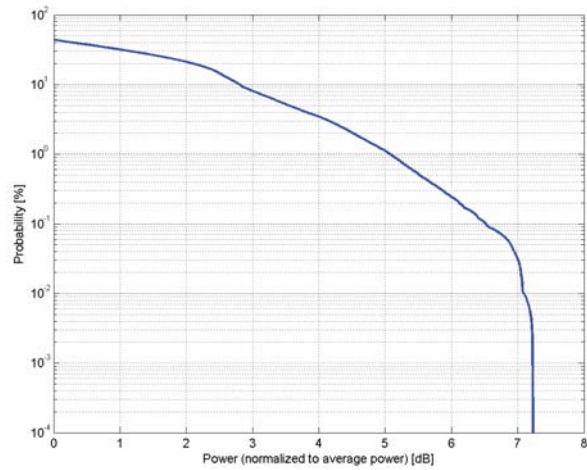
Time Domain

**Calibration Laboratory of
Schmid & Partner
Engineering AG**
Zeughausstrasse 43, 8004 Zurich, Switzerland

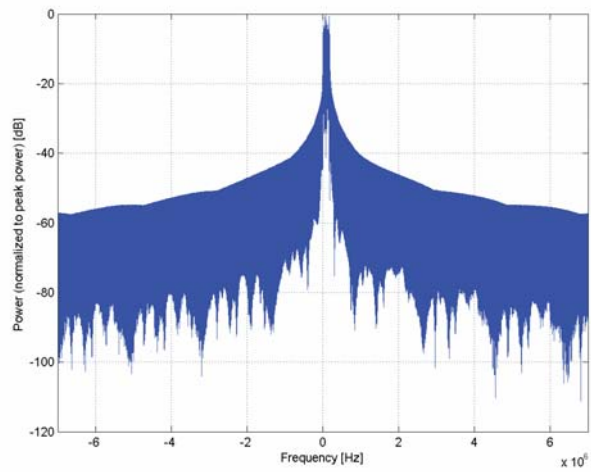
| | |
|-------------------------|---|
| Name: | LTE-FDD (SC-FDMA, 1 RB, 10 MHz, 16-QAM) |
| Group: | LTE-FDD |
| UID: | 10176-CAF |
| PAR: ¹ | 6.52 dB |
| MIF: ² | -9.76 dB |
| Standard Reference: | 3GPP / ETSI TS 136.101 V8.4.0 3GPP / ETSI TS 136.213 V8.4.0 FCC OET KDB 941225 D05 SAR for LTE Devices v01 |
| Category: | Random amplitude modulation |
| Modulation: | 16-QAM |
| Frequency Band: | Band 1, E-UTRA/FDD (1920.0 - 1980.0 MHz) Band 2, E-UTRA/FDD (1850.0 - 1910.0 MHz) Band 3, E-UTRA/FDD (1710.0 - 1785.0 MHz) Band 4, E-UTRA/FDD (1710.0 - 1755.0 MHz) Band 5, E-UTRA/FDD (824.0 - 849.0 MHz) Band 6, E-UTRA/FDD (830.0 - 840.0 MHz) Band 7, E-UTRA/FDD (2500.0 - 2570.0 MHz) Band 8, E-UTRA/FDD (880.0 - 915.0 MHz) Band 9, E-UTRA/FDD (1749.9 - 1784.9 MHz) Band 10, E-UTRA/FDD (1710.0 - 1770.0 MHz) Band 11, E-UTRA/FDD (1427.9 - 1447.9 MHz) Band 12, E-UTRA/FDD (699.0 - 716.0 MHz) Band 13, E-UTRA/FDD (777.0 - 787.0 MHz) Band 14, E-UTRA/FDD (788.0 - 798.0 MHz) Band 17, E-UTRA/FDD (704.0 - 716.0 MHz) Band 18, E-UTRA/FDD (815.0 - 830.0 MHz) Band 19, E-UTRA/FDD (830.0 - 845.0 MHz) Band 20, E-UTRA/FDD (832.0 - 862.0 MHz) Band 21, E-UTRA/FDD (1447.9 - 1462.9 MHz) Band 22, E-UTRA/FDD (3410.0 - 3490.0 MHz) Band 23, E-UTRA/FDD (2000.0 - 2020.0 MHz) Band 24, E-UTRA/FDD (1626.5 - 1660.5 MHz) Band 25, E-UTRA/FDD (1850.0 - 1915.0 MHz) Band 26 E-UTRA/FDD (814.0 - 849.0 MHz) Band 27 E-UTRA/FDD (807.0 - 824.0 MHz) Band 28 E-UTRA/FDD (703.0 - 748.0 MHz) Band 30, E-UTRA/FDD (2305.0 - 2315.0 MHz) Band 65, E-UTRA/FDD (1920.0 - 2010.0 MHz) Band 66, E-UTRA/FDD (1710.0 - 1780.0 MHz) Band 68, E-UTRA/FDD (698.0 - 728.0 MHz) Band 70, E-UTRA/FDD (1695.0 - 1710.0 MHz) Band 71, E-UTRA/FDD (663.0 - 698.0 MHz) Band 74, E-UTRA/FDD (1427.0 - 1470.0 MHz) Validation band (0.0 - 6000.0 MHz) |
| Detailed Specification: | Modulation Scheme: SC-FDMA Number of PUSCHs: 1 Settings for Subframe #0 to #9: Modulation Scheme: QPSK Data Type: UL-SCH Number RB: 1 Transport Block Size: 256 TBS Index: 14 MCS Index: 15 Data Type: PN9 |
| Bandwidth: | 10.0 MHz |
| Integration Time: | 10.0 ms |

¹ PAR (0.1%) in accordance with FCC KDB 971168, Section 6.0 "Measurement of the Peak-to-Average Power Ratio (PAPR)"

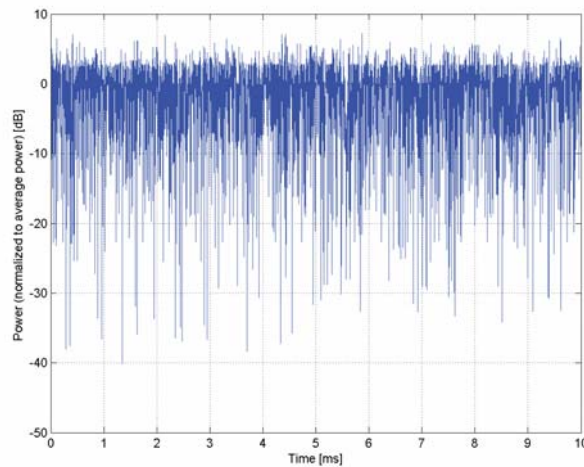
² Modulation Interference Factor (MIF) value valid only in conjunction with advanced probe response linearization calibration for the same communication system (same UID and version).



Complementary Cumulative Distribution Function (CCDF)



Frequency Domain



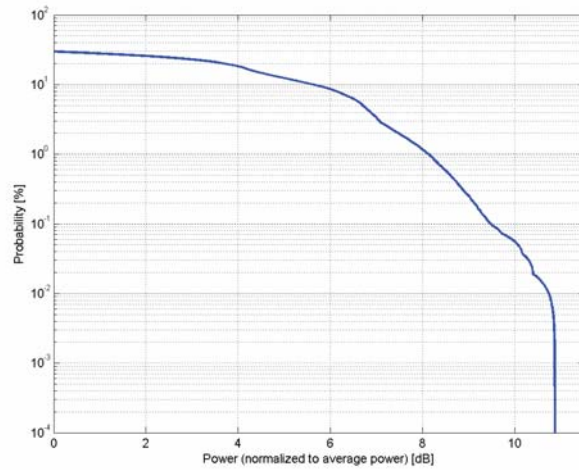
Time Domain

**Calibration Laboratory of
Schmid & Partner
Engineering AG**
Zeughausstrasse 43, 8004 Zurich, Switzerland

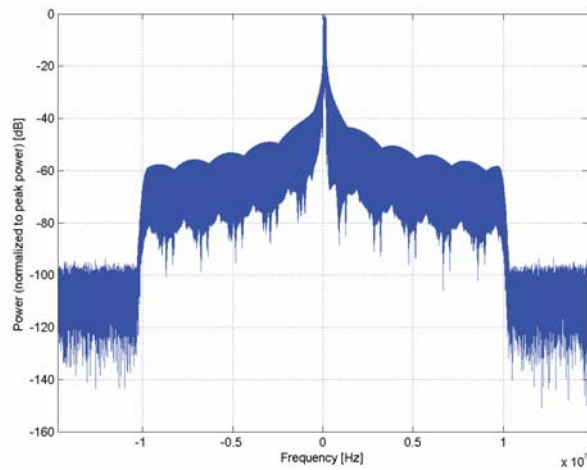
| | |
|-------------------------|---|
| Name: | LTE-TDD (SC-FDMA, 1 RB, 20 MHz, 16-QAM) |
| Group: | LTE-TDD |
| UID: | 10173-CAF |
| PAR: ¹ | 9.48 dB |
| MIF: ² | -1.44 dB |
| Standard Reference: | 3GPP / ETSI TS 136.101 V8.4.0 3GPP / ETSI TS 136.213 V8.4.0 FCC OET KDB 941225 D05 SAR for LTE Devices v02 |
| Category: | Random amplitude modulation |
| Modulation: | 16-QAM |
| Frequency Band: | Band 33, E-UTRA/TDD (1900.0 - 1920.0 MHz) Band 35, E-UTRA/TDD (1850.0 - 1910.0 MHz) Band 36, E-UTRA/TDD (1930.0 - 1990.0 MHz) Band 37, E-UTRA/TDD (1910.0 - 1930.0 MHz) Band 38, E-UTRA/TDD (2570.0 - 2620.0 MHz) Band 39, E-UTRA/TDD (1880.0 - 1920.0 MHz) Band 40, E-UTRA/TDD (2300.0 - 2400.0 MHz) Band 41, E-UTRA/TDD (2496.0 - 2690.0 MHz) Band 42, E-UTRA/TDD (3400.0 - 3600.0 MHz) Band 43, E-UTRA/TDD (3600.0 - 3800.0 MHz) Band 44, E-UTRA/TDD (703.0 - 803.0 MHz) Band 45, E-UTRA/FDD (1447.0 - 1467.0 MHz) Band 46, E-UTRA/FDD (5150.0 - 5925.0 MHz) Band 47, E-UTRA/TDD (5855.0 - 5925.0 MHz) Band 48, E-UTRA/TDD (3550.0 - 3700.0 MHz) Band 49, E-UTRA/TDD (3550.0 - 3700.0 MHz) Band 50, E-UTRA/TDD (1432.0 - 1517.0 MHz) Validation band (0.0 - 6000.0 MHz) |
| Detailed Specification: | Modulation Scheme: SC-FDMA Uplink-downlink configuration: 1 Special Subframe configuration: 4 Number of Frames: 1 Settings for UL Subframe 2,3,7,8: Number of PUSCHs: 1 Modulation Scheme: 16QAM Allocated RB: 1 Start Number of RB: 50 Data Type: PN9fix |
| Bandwidth: | 20.0 MHz |
| Integration Time: | 6.0 ms |

¹ PAR (0.1%) in accordance with FCC KDB 971168, Section 6.0 "Measurement of the Peak-to-Average Power Ratio (PAPR)"

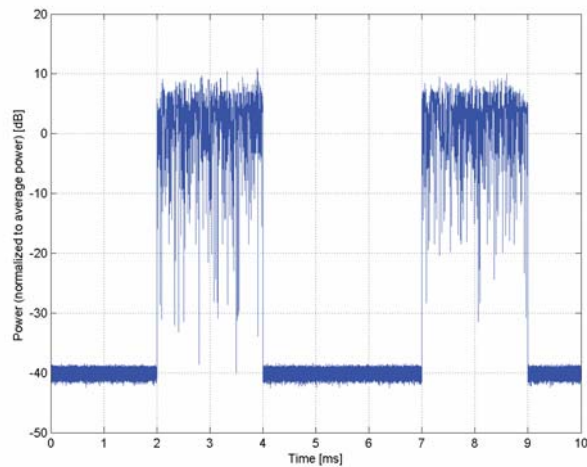
² Modulation Interference Factor (MIF) value valid only in conjunction with advanced probe response linearization calibration for the same communication system (same UID and version).



Complementary Cumulative Distribution Function (CCDF)



Frequency Domain



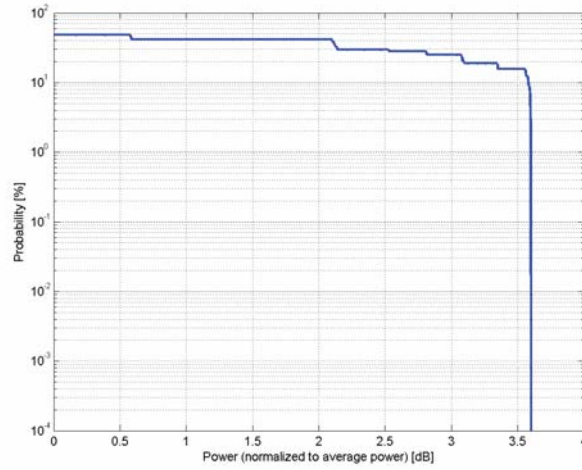
Time Domain

**Calibration Laboratory of
Schmid & Partner
Engineering AG**
Zeughausstrasse 43, 8004 Zurich, Switzerland

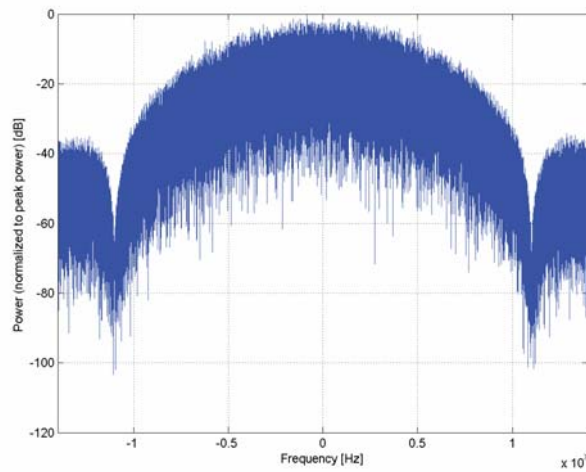
| | |
|-------------------------|---|
| Name: | IEEE 802.11b WiFi 2.4 GHz (DSSS, 11 Mbps) |
| Group: | WLAN |
| UID: | 10061-CAB |
| PAR: ¹ | 3.60 dB |
| MIF: ² | -2.02 dB |
| Standard Reference: | IEEE 802.11b-1999 , Part 11, FCC SAR meas for 802 11 a b g v01r02 (248227 D01) |
| Category: | Random amplitude modulation |
| Modulation: | DQPSK |
| Frequency Band: | WLAN 2.4GHz (2412.0-2484.0 MHz, 20230) |
| Detailed Specification: | Data Rate: 11 Mbps Spreading, Coding: CCK PPDU format: Long Preamble & Heading PSDU Length: 1024 PSDU Data: PN9 |
| Bandwidth: | 20.0 MHz |
| Integration Time: | 1.5 ms |

¹ PAR (0.1%) in accordance with FCC KDB 971168, Section 6.0 "Measurement of the Peak-to-Average Power Ratio (PAPR)"

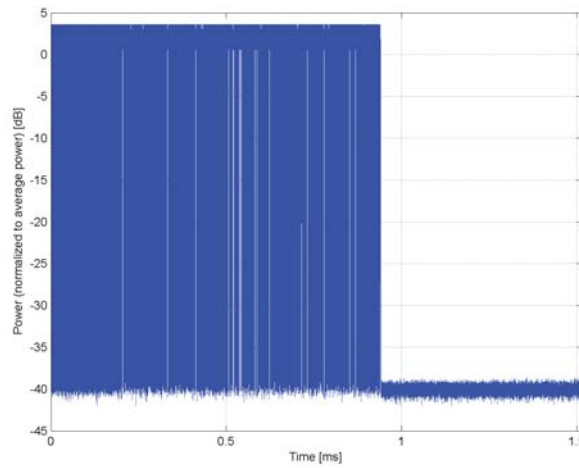
² Modulation Interference Factor (MIF) value valid only in conjunction with advanced probe response linearization calibration for the same communication system (same UID and version).



Complementary Cumulative Distribution Function (CCDF)



Frequency Domain



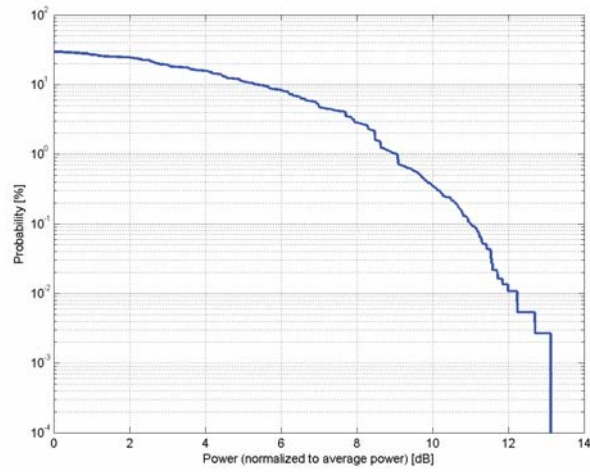
Time Domain

**Calibration Laboratory of
Schmid & Partner
Engineering AG**
Zeughausstrasse 43, 8004 Zurich, Switzerland

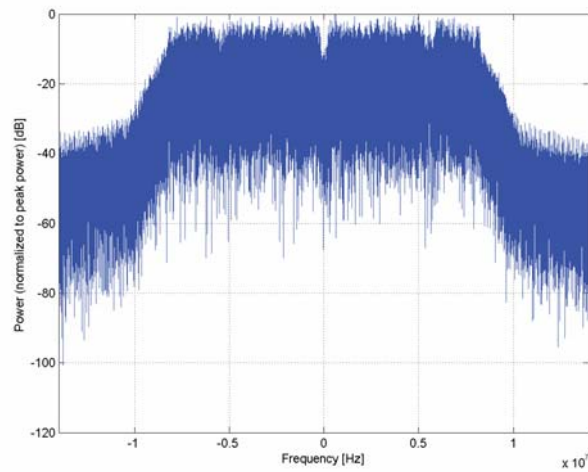
| | |
|-------------------------|--|
| Name: | IEEE 802.11g WiFi 2.4 GHz (DSSS/OFDM, 54 Mbps) |
| Group: | WLAN |
| UID: | 10077-CAB |
| PAR: ¹ | 11.00 dB |
| MIF: ² | 0.12 dB |
| Standard Reference: | IEEE 802.11g-2003 , Part 11 FCC SAR meas for 802 11 a b g v01r02 (248227 D01) |
| Category: | Random amplitude modulation |
| Modulation: | 64-QAM |
| Frequency Band: | WLAN 2.4GHz (2412.0-2484.0 MHz, 20230) |
| Detailed Specification: | Data Rate: 54 Mbps Coding Rate: 3/4 Coded bits per subcarrier: 6 Coded bits per OFDM symbol: 288 Data bits per OFDM symbol: 216 PSDU Length: 1000 Bytes PSDU Data: PN9 |
| Bandwidth: | 20.0 MHz |
| Integration Time: | 0.9 ms |

¹ PAR (0.1%) in accordance with FCC KDB 971168, Section 6.0 "Measurement of the Peak-to-Average Power Ratio (PAPR)"

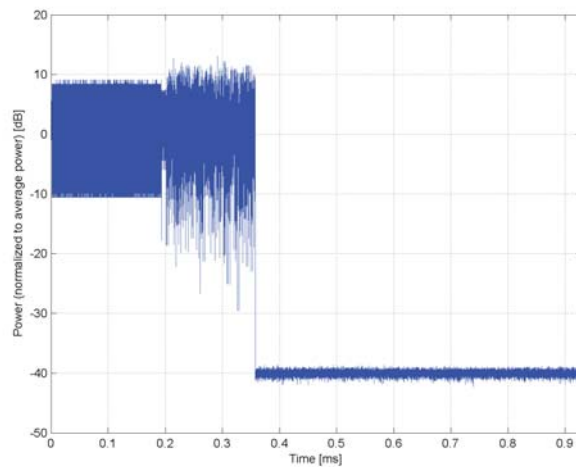
² Modulation Interference Factor (MIF) value valid only in conjunction with advanced probe response linearization calibration for the same communication system (same UID and version).



Complementary Cumulative Distribution Function (CCDF)



Frequency Domain



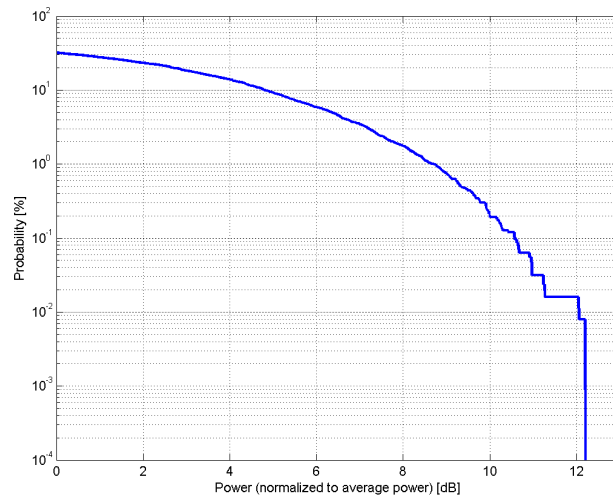
Time Domain

**Calibration Laboratory of
Schmid & Partner
Engineering AG**
Zeughausstrasse 43, 8004 Zurich, Switzerland

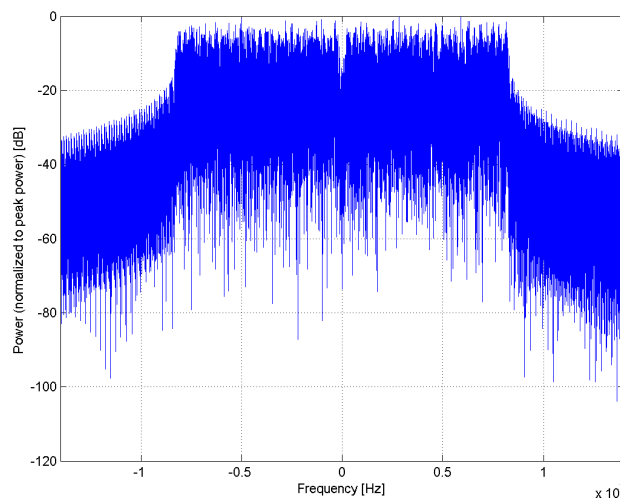
| | |
|-------------------------|--|
| Name: | IEEE 802.11a/h WiFi 5 GHz (OFDM, 54 Mbps) |
| Group: | WLAN |
| UID: | 10069-CAC |
| PAR: ¹ | 10.56 dB |
| MIF: ² | -3.15 dB |
| Standard Reference: | IEEE 802.11a-1999 (R2003) , Part 11 IEEE 802.11h-2003 , Part 11 FCC SAR meas for 802 11 a b g v01r02 (248227 D01) |
| Category: | Random amplitude modulation |
| Modulation: | 64-QAM |
| Frequency Band: | WLAN 5GHz (4915.0 - 5825.0 MHz) U-NII-1, U-NII-2A (5170 - 5330 MHz) U-NII-2C Standalone (5490 - 5710 MHz) U-NII-2C <5.65 GHz (5490 - 5650 MHz) U-NII-3 Standalone (5735 - 5835 MHz) U-NII-2C, U-NII-3 (5650 - 5835 MHz) Validation band (0.0 - 6000.0 MHz) |
| Detailed Specification: | Data Rate: 54 Mbps Coding Rate: 3/4 Coded bits per subcarrier: 6 Coded bits per OFDM symbol: 288 Data bits per OFDM symbol: 216 PSDU Length: 1000 Bytes PSDU Data: PN9 |
| Bandwidth: | 20.0 MHz |
| Integration Time: | 0.3 ms |

¹ PAR (0.1%) in accordance with FCC KDB 971168, Section 6.0 "Measurement of the Peak-to-Average Power Ratio (PAPR)"

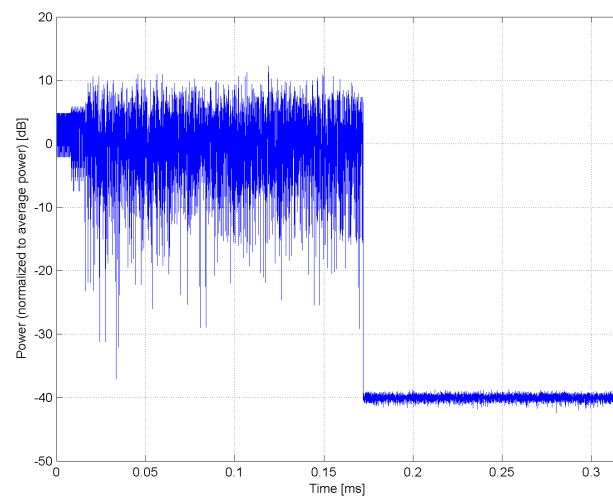
² Modulation Interference Factor (MIF) value valid only in conjunction with advanced probe response linearization calibration for the same communication system (same UID and version).



Complementary Cumulative Distribution Function (CCDF)



Frequency Domain



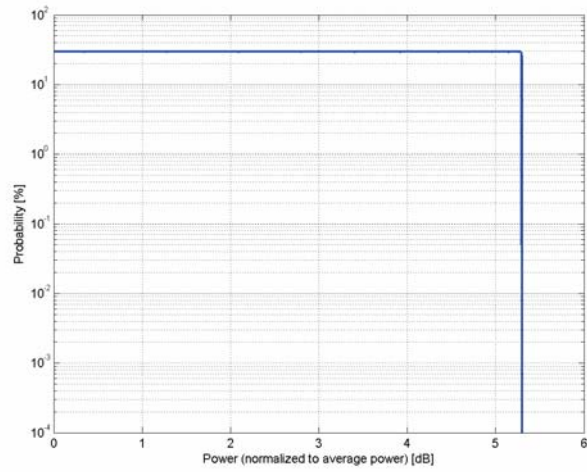
Time Domain

**Calibration Laboratory of
Schmid & Partner
Engineering AG**
Zeughausstrasse 43, 8004 Zurich, Switzerland

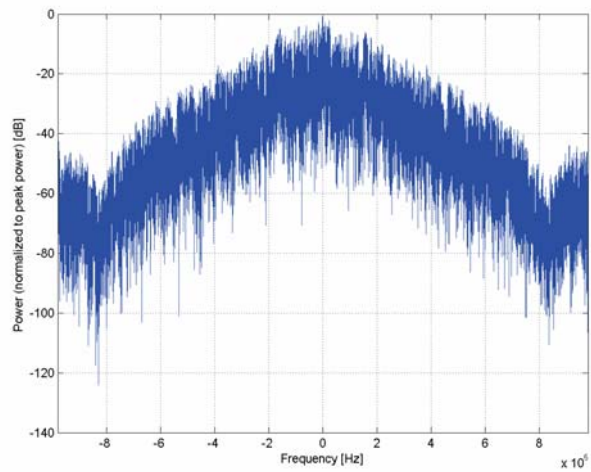
| | |
|-------------------------|--|
| Name: | IEEE 802.15.1 Bluetooth (GFSK, DH1) |
| Group: | Bluetooth |
| UID: | 10030-CAA |
| PAR: ¹ | 5.30 dB |
| MIF: ² | 1.02 dB |
| Standard Reference: | Bluetooth 1.2 (IEEE Standard 802.15.1-2005) |
| Category: | Periodic pulsed modulation |
| Modulation: | GFSK |
| Frequency Band: | ISM 2.4 GHz Band (2400.0-2483.5 MHz, 20052) |
| Detailed Specification: | Basic Rate, 1 Slot active Data Rate: 1 Mbps Packet Type: DH1 Payload Body: 27 Bytes PN9 data is inserted into the payload body Modulation for Payload: GFSK Modulation Index: 0.32 |
| Bandwidth: | 1.4 MHz |
| Integration Time: | 2.5 ms |

¹ PAR (0.1%) in accordance with FCC KDB 971168, Section 6.0 "Measurement of the Peak-to-Average Power Ratio (PAPR)"

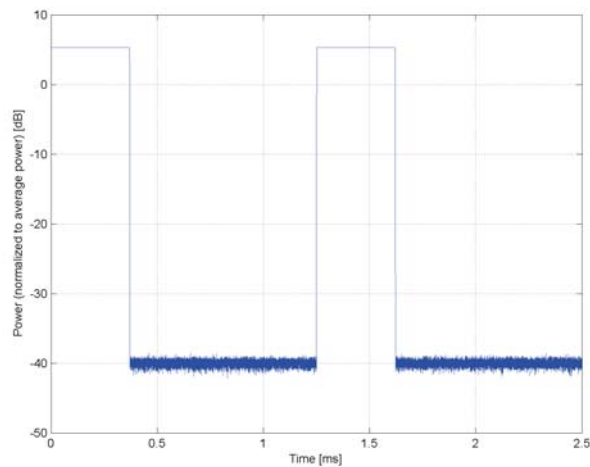
² Modulation Interference Factor (MIF) value valid only in conjunction with advanced probe response linearization calibration for the same communication system (same UID and version).



Complementary Cumulative Distribution Function (CCDF)



Frequency Domain



Time Domain

802.11ax MIF Test data

| 802.11ax SU | MCS0 | MCS1 | MCS2 | MCS3 | MCS4 | MCS5 | MCS6 | MCS7 | MCS8 | MCS9 | MCS10 | MCS11 |
|-------------|-------|-------|-------|-------|-------|-------|-------|-------|-------|-------|-------|-------|
| 2.4GHz HE20 | -8.94 | -8.00 | -7.30 | -6.76 | -6.07 | -5.66 | -5.44 | -5.28 | -5.03 | -4.93 | - | - |
| 5GHz HE20 | -9.07 | -8.06 | -7.37 | -6.84 | -6.16 | -5.72 | -5.52 | -5.30 | -5.11 | -5.01 | -4.91 | -4.84 |
| 5GHz HE40 | -9.18 | -8.11 | -7.47 | -6.92 | -6.19 | -5.72 | -5.53 | -5.37 | -5.09 | -4.99 | -4.85 | -4.78 |
| 5GHz HE80 | -9.00 | -8.09 | -7.35 | -6.91 | -6.19 | -5.68 | -5.47 | -5.37 | -5.11 | -4.92 | -4.88 | -4.78 |

802.11ax MU 2.4GHz HE20

| Tones | RU | MCS0 | MCS1 | MCS2 | MCS3 | MCS4 | MCS5 | MCS6 | MCS7 | MCS8 | MCS9 |
|-------|----|--------|-------|-------|-------|-------|-------|-------|-------|-------|-------|
| 26T | 0 | -11.92 | -9.54 | -9.07 | -8.72 | -8.17 | -7.63 | -7.43 | -7.20 | -6.88 | -6.75 |
| 52T | 37 | -9.46 | -8.66 | -8.14 | -7.66 | -6.95 | -6.44 | -6.24 | -6.15 | -5.79 | -5.63 |
| 106T | 53 | -8.65 | -7.48 | -6.72 | -6.30 | -5.65 | -5.30 | -5.16 | -5.11 | -4.98 | -5.01 |
| 242T | 61 | -7.14 | -5.97 | -5.36 | -5.06 | -4.93 | -5.03 | -5.08 | -5.11 | -5.24 | -5.37 |

802.11ax MU 5GHz HE20

| Tones | RU | MCS0 | MCS1 | MCS2 | MCS3 | MCS4 | MCS5 | MCS6 | MCS7 | MCS8 | MCS9 | MCS10 | MCS11 |
|-------|----|--------|-------|-------|-------|-------|-------|-------|-------|-------|-------|-------|-------|
| 26T | 0 | -12.62 | -9.61 | -9.33 | -8.72 | -8.30 | -7.77 | -7.62 | -7.39 | -7.01 | -6.89 | - | - |
| 52T | 37 | -9.84 | -8.91 | -8.20 | -7.82 | -7.11 | -6.64 | -6.43 | -6.32 | -5.99 | -5.84 | - | - |
| 106T | 53 | -8.77 | -7.65 | -6.96 | -6.52 | -5.90 | -5.54 | -5.43 | -5.36 | -5.27 | -5.29 | - | - |

802.11ax MU 5GHz HE40

| Tones | RU | MCS0 | MCS1 | MCS2 | MCS3 | MCS4 | MCS5 | MCS6 | MCS7 | MCS8 | MCS9 | MCS10 | MCS11 |
|-------|----|--------|-------|-------|-------|-------|-------|-------|-------|-------|-------|-------|-------|
| 26T | 0 | -12.04 | -9.97 | -9.47 | -8.88 | -8.50 | -7.99 | -7.76 | -7.57 | -7.23 | -7.09 | - | - |
| 52T | 37 | -9.97 | -9.08 | -8.37 | -7.93 | -7.25 | -6.76 | -6.58 | -6.50 | -6.12 | -5.99 | - | - |
| 106T | 53 | -8.90 | -7.70 | -7.00 | -6.60 | -5.97 | -5.61 | -5.49 | -5.44 | -5.34 | -5.35 | - | - |
| 242T | 61 | -7.31 | -6.18 | -5.59 | -5.33 | -5.19 | -5.30 | -5.43 | -5.53 | -5.66 | -5.79 | -5.90 | -6.07 |

802.11ax MU 5GHz HE80

| Tones | RU | MCS0 | MCS1 | MCS2 | MCS3 | MCS4 | MCS5 | MCS6 | MCS7 | MCS8 | MCS9 | MCS10 | MCS11 |
|-------|----|--------|-------|-------|-------|-------|-------|-------|-------|-------|-------|-------|-------|
| 26T | 0 | -12.14 | -9.97 | -9.50 | -8.97 | -8.45 | -7.94 | -7.76 | -7.48 | -7.21 | -7.01 | - | - |
| 52T | 37 | -9.70 | -8.95 | -8.35 | -7.93 | -7.24 | -6.73 | -6.54 | -6.46 | -6.10 | -5.89 | - | - |
| 106T | 53 | -8.81 | -7.75 | -7.01 | -6.59 | -5.97 | -5.61 | -5.47 | -5.43 | -5.28 | -5.35 | - | - |
| 242T | 61 | -7.31 | -6.18 | -5.59 | -5.31 | -5.19 | -5.30 | -5.44 | -5.52 | -5.67 | -5.81 | -5.92 | -6.08 |
| 484T | 65 | -6.03 | -5.15 | -5.06 | -5.19 | -5.56 | -5.91 | -6.00 | -6.18 | -6.26 | -6.46 | -6.56 | -6.79 |