

PASSO BOM

SM-G800F
REV0.4(KH1)
R271 SE G

K4722K

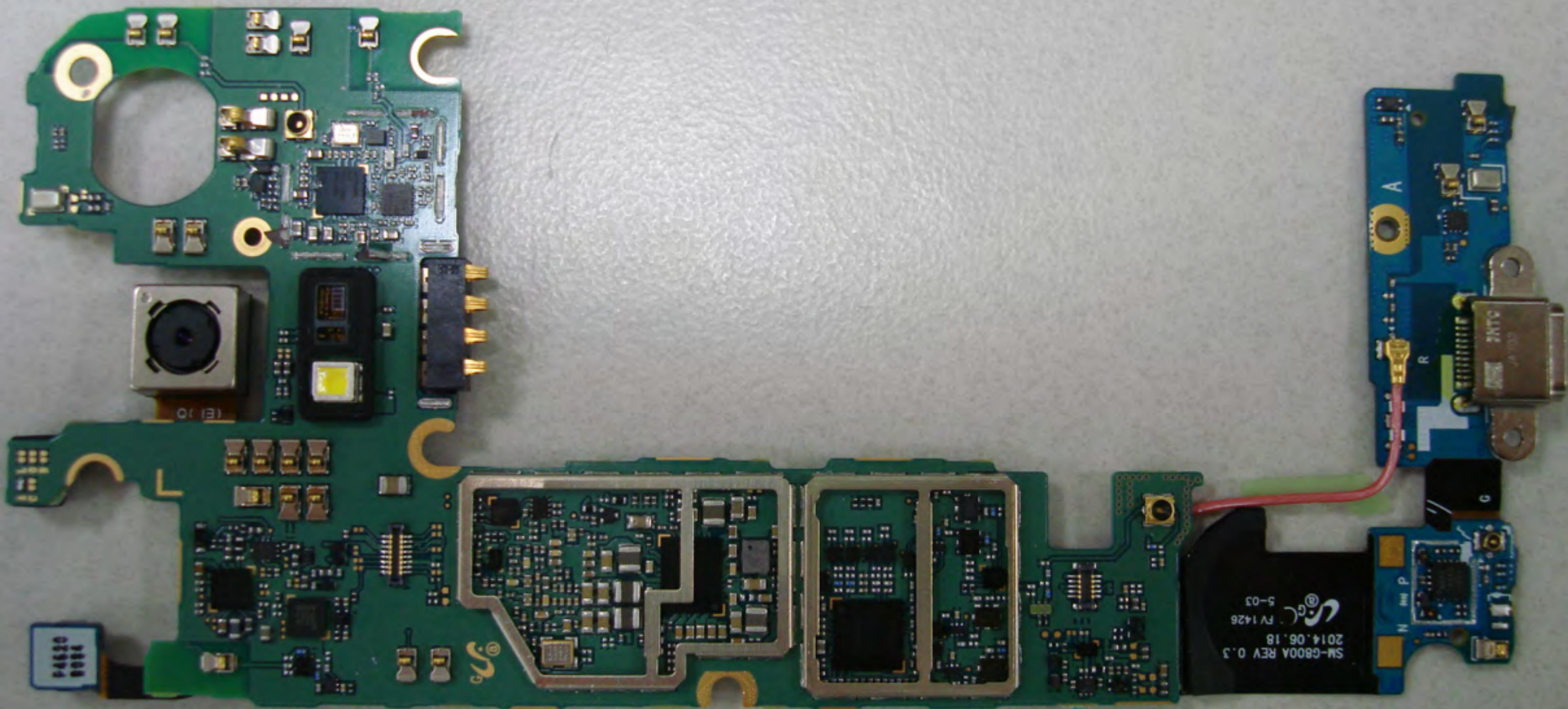
SM-G800A REV 0.3
2014.06.18
9-03

N P
G

A

R





P4620
8084

SM-G800A REV 0.3
2014.06.18 FV1426
5-03

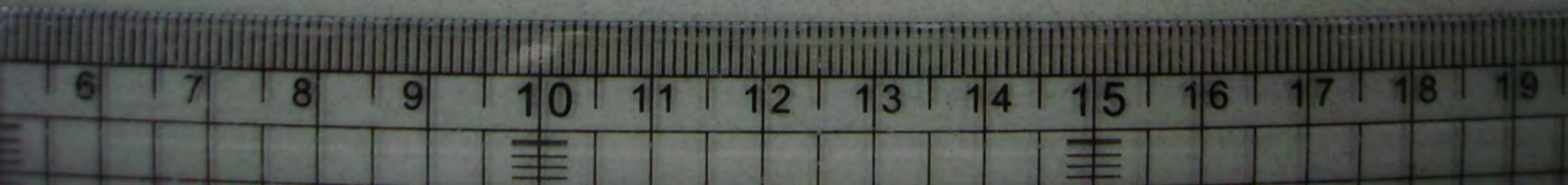
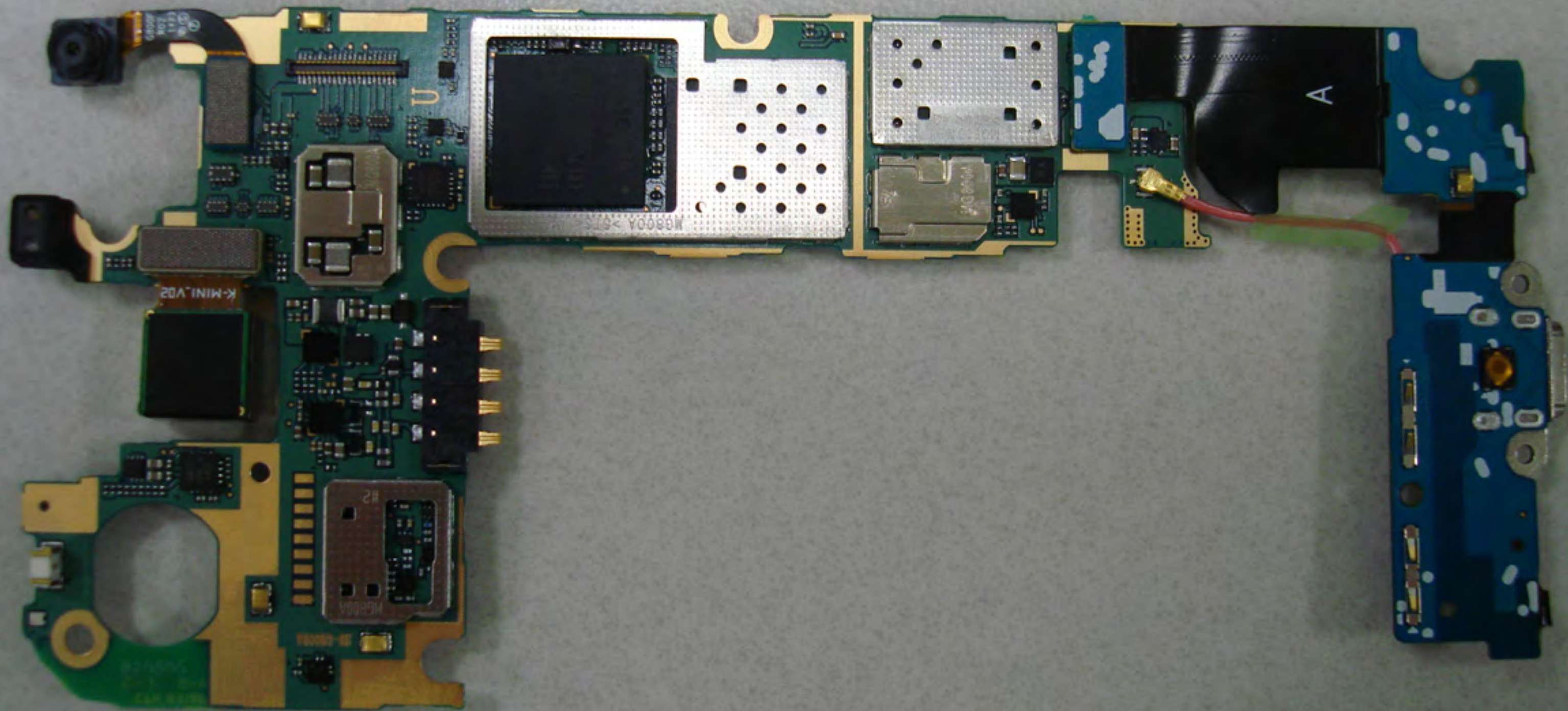
A

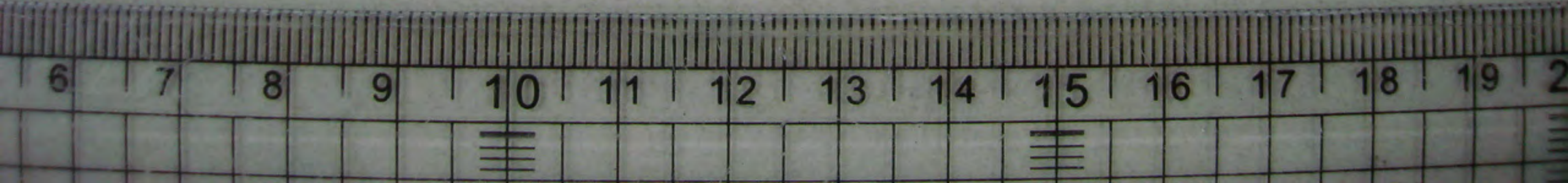
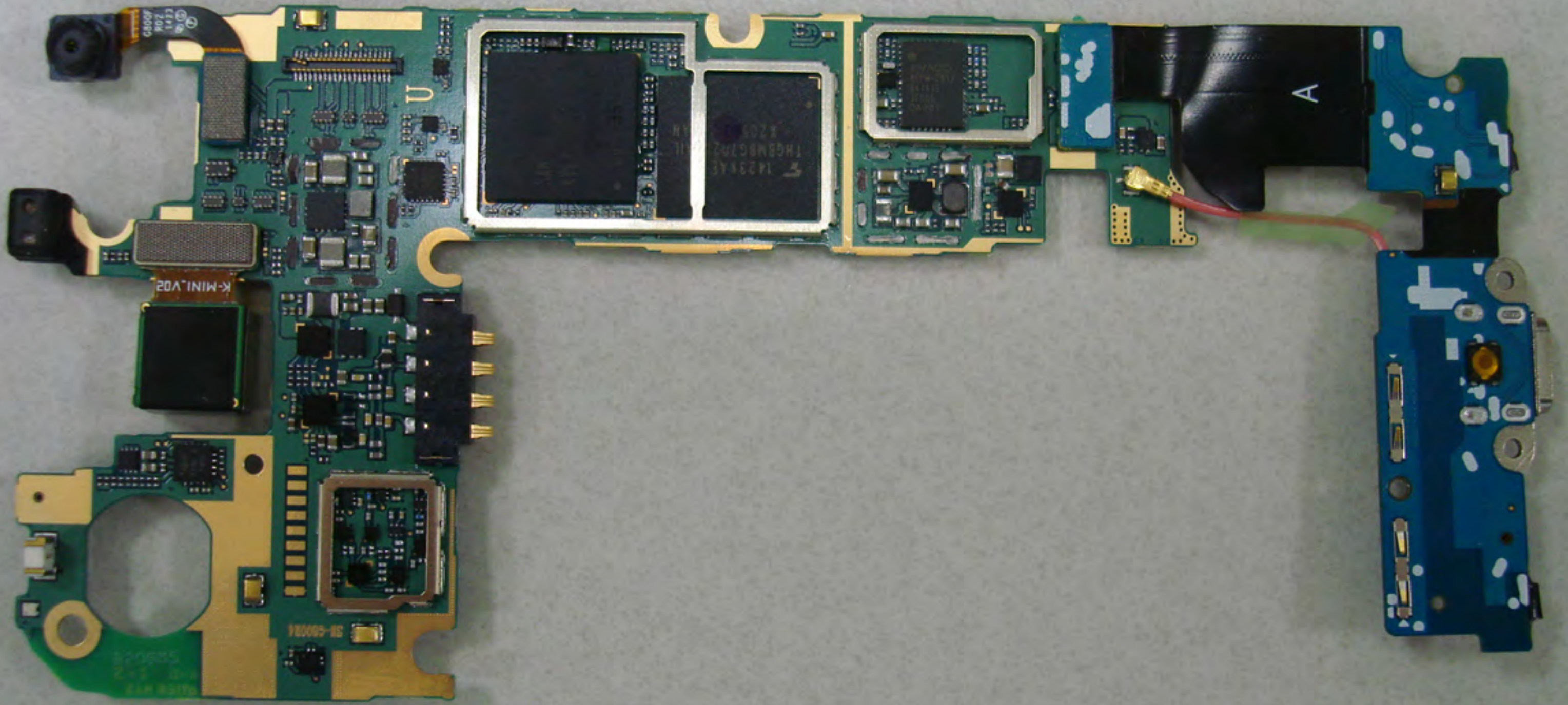
R

N

P

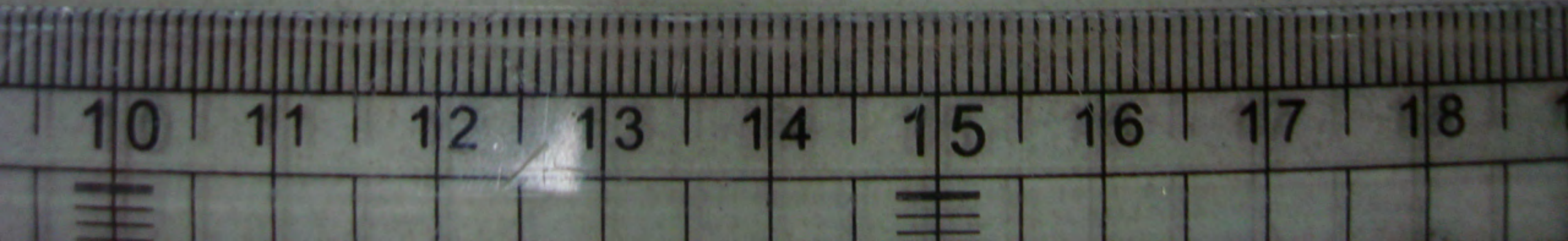
G







A-N4





>PC<
P4721A

