

## Appendix H. – Power reduction verification

Per the May 2017 TCBC Workshop notes, demonstration of proper functioning of the power reduction mechanism is required to support the corresponding SAR Configurations.

The verification process was divided into two parts:

- 1). Evaluation of output power levels for individual triggering mechanism
- 2) Evaluation of the triggering distances for proximity-based sensors.

### 1. Power Reduction Verification for Main Ant

The Power verification was performed according to the following procedure:

1. A base station simulator was used to establish a conducted RF connection and output power was monitored. The Power measurements were conformed to be within expected tolerances for all states before and after a power reduction mechanism was triggered.
2. Step 1 was repeated for all relevant modes and frequency bands for the mechanism being investigated.
3. Step 1 and 2 were repeated for all individual power reduction mechanism and combinations thereof. For the combination cases, one mechanism was switched to a “triggered” state at a time; powers were conformed to be within tolerance after each additional mechanism was activated.

**Main Antenna Verification Summary**

Mechanism(s)	Mode/Band	Device State Index		
		Un-triggered (Max Power)	Triggered (Reduced Power)	Triggered (Reduced Power)
Grip	GSM/GPRS/EDGE 850	0	1	
Grip	GSM/GPRS/EDGE 1900	0	1	
Grip	PCS/EVDO BC1	0	1	
Grip	WCDMA B2	0	1	
Grip	WCDMA B4	0	1	
Grip	LTE Band 2	0	1	
Grip	LTE Band 4	0	1	
Grip	LTE Band 7	0	1	
Grip	LTE Band 25	0	1	
Grip	LTE Band 30	0	1	
Grip	LTE Band 38	0	1	
Grip	LTE Band 41(Class 3)	0	1	
Grip	LTE Band 41(Class 2)	0	1	
Grip	LTE Band 66	0	1	
Grip	Sub 6 Band n2	0	1	
Grip	Sub 6 Band n25	0	1	
Grip	Sub 6 Band n41	0	1	
Grip	Sub 6 Band n66	0	1	
Hotspot On	GSM/GPRS/EDGE 850	0	3	
Hotspot On	GSM/GPRS/EDGE 1900	0	3	
Hotspot On	PCS/EVDO BC1	0	3	
Hotspot On	WCDMA B2	0	3	
Hotspot On	WCDMA B4	0	3	
Hotspot On	LTE Band 2	0	3	
Hotspot On	LTE Band 4	0	3	
Hotspot On	LTE Band 7	0	3	
Hotspot On	LTE Band 25	0	3	
Hotspot On	LTE Band 30	0	3	
Hotspot On	LTE Band 38	0	3	
Hotspot On	LTE Band 41(Class 3)	0	3	
Hotspot On	LTE Band 41(Class 2)	0	3	
Hotspot On	LTE Band 66	0	3	
Hotspot On	Sub 6 Band n2	0	3	
Hotspot On	Sub 6 Band n25	0	3	
Hotspot On	Sub 6 Band n41	0	3	
Hotspot On	Sub 6 Band n66	0	3	
Hotspot On, Then Grip	GSM/GPRS/EDGE 850	0	3	1
Hotspot On, Then Grip	GSM/GPRS/EDGE 1900	0	3	1
Hotspot On, Then Grip	PCS/EVDO BC1	0	3	1
Hotspot On, Then Grip	WCDMA B2	0	3	1
Hotspot On, Then Grip	WCDMA B4	0	3	1
Hotspot On, Then Grip	LTE Band 2	0	3	1
Hotspot On, Then Grip	LTE Band 4	0	3	1
Hotspot On, Then Grip	LTE Band 7	0	3	1
Hotspot On, Then Grip	LTE Band 25	0	3	1

Hotspot On, Then Grip	LTE Band 30	0	3	1
Hotspot On, Then Grip	LTE Band 38	0	3	1
Hotspot On, Then Grip	LTE Band 41(Class 3)	0	3	1
Hotspot On, Then Grip	LTE Band 41(Class 2)	0	3	1
Hotspot On, Then Grip	LTE Band 66	0	3	1
Hotspot On, Then Grip	Sub 6 Band n2	0	3	1
Hotspot On, Then Grip	Sub 6 Band n25	0	3	1
Hotspot On, Then Grip	Sub 6 Band n41	0	3	1
Hotspot On, Then Grip	Sub 6 Band n66	0	3	1
Grip, then Hotspot On	GSM/GPRS/EDGE 850	0	1	1
Grip, then Hotspot On	GSM/GPRS/EDGE 1900	0	1	1
Grip, then Hotspot On	PCS/EVDO BC1	0	1	1
Grip, then Hotspot On	WCDMA B2	0	1	1
Grip, then Hotspot On	WCDMA B4	0	1	1
Grip, then Hotspot On	LTE Band 2	0	1	1
Grip, then Hotspot On	LTE Band 4	0	1	1
Grip, then Hotspot On	LTE Band 7	0	1	1
Grip, then Hotspot On	LTE Band 25	0	1	1
Grip, then Hotspot On	LTE Band 30	0	1	1
Grip, then Hotspot On	LTE Band 38	0	1	1
Grip, then Hotspot On	LTE Band 41(Class 3)	0	1	1
Grip, then Hotspot On	LTE Band 41(Class 2)	0	1	1
Grip, then Hotspot On	LTE Band 66	0	1	1
Grip, then Hotspot On	Sub 6 Band n2	0	1	1
Grip, then Hotspot On	Sub 6 Band n25	0	1	1
Grip, then Hotspot On	Sub 6 Band n41	0	1	1
Grip, then Hotspot On	Sub 6 Band n66	0	1	1

\* LTE Band 40 supports MCC back off as a top priority

\*Note: This device uses different Device State Indices (DSI) to configure different time averaged power levels based on certain exposure scenarios. For this device, DSI = 1 represents the case when the grip sensor is active, DSI = 2 represents the case where the device is held to ear, and DSI = 3 represents the case when hotspot mode is active, DSI = 4 represents the case when ear-jack is inserted and DSI = 0 is configured at max power when the device cannot detect the use condition .

when Hotspot Mode (DSI=3) Grip sensor (DSI=1) and Ear-jack mode(DSI=4) are triggered at the same time, DSI=1 takes more higher priority. the Priority for power reduction was given in the order of grip (DSI=1), hotspot(DSI=3) and earjack.(DSI=4).

### 1.1. Distance Verification Procedure

Procedures for determining proximity sensor triggering distances

(KDB 616217 D04v01r02 §6.2)

The distance verification procedure was performed according to the following procedure:

1. A base station simulator was used to establish an RF connection and to monitor the power levels. The device being tested was placed below the relevant section of the phantom with the relevant side or edge of the device facing toward the phantom.
2. The device was moved toward and away from the phantom to determine the distance at which the mechanism triggers and the output power is reduced, per KDB Publication 616217 D04v01r02 .Each applicable test position was evaluated. The distance were conformed to be the same or larger (more conservative) than the minimum distances provided by the manufacturer.
3. Step 1 and 2 were repeated for the relevant modes, as appropriate
4. Steps1 through 3 were repeated for all distance-based power reduction mechanisms.

For detailed measurement conducted power results, please refer to the Section .11



Proximity Sensor Trigger Distance Assessment KDB 616217 D04 §6.2 (Rear / Front / Bottom side)

#### LEGEND

- Direction of DUT travel for determination of power reduction triggering point
- Direction of DUT travel for determination of full power resumption triggering point

Tissue simulating liquid	Trigger distance - Rear		Trigger distance - Front		Trigger distance - Bottom	
	Moving toward phantom [mm]	Moving away from phantom [mm]	Moving toward phantom [mm]	Moving away from phantom [mm]	Moving toward phantom [mm]	Moving away from phantom [mm]
850 MHz Tissue	9	10	8	9	14	15
1750 MHz Tissue	9	10	8	9	14	15
1900 MHz Tissue	9	10	8	9	14	15
2300 MHz Tissue	9	10	8	9	14	15
2600 MHz Tissue	9	10	8	9	14	15

Distance Measurement verification for Proximity sensor

Rear side – EUT Moving toward (trigger) to the Phantom

Mode	Distance to DUT Output power (dBm)									
	14[mm]	13[mm]	12[mm]	11[mm]	10[mm]	9[mm]	8[mm]	7[mm]	6[mm]	5[mm]
GSM850 /Voice	31.49	31.51	31.57	31.48	31.54	29.85	29.79	29.79	29.79	29.80
GSM850 /GPRS 1Tx	31.59	31.53	31.49	31.48	31.53	29.81	29.83	29.87	29.78	29.74
GSM850 /GPRS 2Tx	31.56	31.53	31.48	31.43	31.39	28.73	28.62	28.65	28.60	28.79
GSM850 /GPRS 3Tx	29.29	29.33	29.20	29.37	29.22	26.61	26.59	26.58	26.46	26.62
GSM850 /GPRS 4Tx	27.22	27.36	27.20	27.29	27.38	24.35	24.44	24.40	24.43	24.46
GSM1900 /Voice	28.87	28.98	28.86	28.86	28.81	26.43	26.47	26.48	26.49	26.41
GSM1900 /GPRS 1Tx	28.98	28.87	28.81	28.89	28.94	26.47	26.43	26.55	26.51	26.49
GSM1900 /GPRS 2Tx	28.04	28.04	28.07	27.92	28.03	25.48	25.44	25.56	25.43	25.47
GSM1900 /GPRS 3Tx	26.31	26.49	26.32	26.37	26.36	23.64	23.70	23.77	23.66	23.67
GSM1900 /GPRS 4Tx	24.29	24.29	24.22	24.38	24.22	21.30	21.33	21.37	21.35	21.49
PCS RC3/3	23.12	23.13	23.11	23.29	23.15	18.46	18.32	18.38	18.42	18.50
PCS EVDO Rev.0	23.46	23.32	23.47	23.30	23.35	18.36	18.41	18.47	18.5	18.43
PCS EVDO Rev.A	23.41	23.42	23.40	23.48	23.33	18.58	18.44	18.40	18.43	18.57
WCDMA B2	23.29	23.29	23.20	23.28	23.21	18.27	18.34	18.31	18.37	18.20
WCDMA B4	23.11	23.09	23.10	23.16	23.12	18.06	18.20	18.13	18.00	18.16
LTE Band 2	23.55	23.69	23.62	23.52	23.54	17.76	17.61	17.68	17.77	17.73
LTE Band 4	23.30	23.44	23.43	23.45	23.41	17.86	17.85	17.90	17.83	17.71
LTE Band 7	22.46	22.45	22.54	22.54	22.53	19.36	19.33	19.39	19.32	19.30
LTE Band 25	23.64	23.81	23.68	23.73	23.71	17.90	17.88	17.82	17.76	17.86
LTE Band 30	21.84	21.82	21.89	21.91	21.97	19.48	19.51	19.46	19.35	19.47
LTE Band 38	22.77	22.75	22.75	22.72	22.89	22.10	22.23	22.19	22.17	22.26
LTE Band 41(Class 3)	23.50	23.37	23.45	23.35	23.50	22.36	22.31	22.30	22.39	22.34
LTE Band 41(Class 2)	25.35	25.34	25.39	25.50	25.38	22.37	22.31	22.36	22.39	22.24
LTE Band 66	24.02	24.06	24.16	24.09	24.11	18.00	18.07	18.07	18.08	18.05
Sub 6 Band n2	23.7	23.89	23.81	23.72	23.87	18.42	18.43	18.41	18.44	18.41
Sub 6 Band n25	24.05	23.98	24.02	24.10	24.04	18.80	18.71	18.71	18.79	18.90
Sub 6 Band n41	23.72	23.74	23.76	23.73	23.82	21.28	21.15	21.30	21.26	21.28
Sub 6 Band n66	24.35	24.24	24.22	24.37	24.20	18.69	18.68	18.79	18.79	18.77

Rear side – EUT Moving away (Release) from the Phantom

Mode	Distance to DUT Output power (dBm)									
	6[mm]	7[mm]	8[mm]	9[mm]	10[mm]	11[mm]	12[mm]	13[mm]	14[mm]	15[mm]
GSM850 /Voice	29.93	29.80	29.91	29.89	29.87	31.43	31.54	31.48	31.60	31.57
GSM850 /GPRS 1Tx	29.86	29.88	29.84	29.75	29.81	31.47	31.56	31.47	31.54	31.58
GSM850 /GPRS 2Tx	28.72	28.71	28.73	28.69	28.77	31.48	31.49	31.46	31.47	31.36
GSM850 /GPRS 3Tx	26.46	26.47	26.66	26.47	26.49	29.35	29.20	29.37	29.40	29.22
GSM850 /GPRS 4Tx	24.39	24.46	24.45	24.47	24.49	27.33	27.29	27.28	27.28	27.23
GSM1900 /Voice	26.6	26.46	26.52	26.6	26.46	28.82	28.89	28.87	28.94	28.99
GSM1900 /GPRS 1Tx	26.56	26.58	26.57	26.56	26.57	28.89	28.83	28.96	29.00	28.87
GSM1900 /GPRS 2Tx	25.49	25.44	25.47	25.46	25.45	28.08	27.98	28.04	28.09	27.95
GSM1900 /GPRS 3Tx	23.74	23.79	23.74	23.62	23.74	26.5	26.47	26.32	26.30	26.44
GSM1900 /GPRS 4Tx	21.34	21.30	21.39	21.46	21.30	24.28	24.37	24.20	24.21	24.31
PCS RC3/3	18.45	18.45	18.50	18.43	18.36	23.29	23.16	23.24	23.27	23.15
PCS EVDO Rev.0	18.30	18.43	18.41	18.30	18.38	23.36	23.40	23.36	23.50	23.50
PCS EVDO Rev.A	18.55	18.40	18.54	18.52	18.53	23.43	23.37	23.34	23.41	23.39
WCDMA B2	18.34	18.28	18.36	18.37	18.21	23.20	23.20	23.22	23.16	23.29
WCDMA B4	18.00	18.01	18.18	18.20	18.16	23.07	23.19	23.07	23.11	23.19
LTE Band 2	17.62	17.67	17.77	17.72	17.68	23.69	23.59	23.52	23.54	23.68
LTE Band 4	17.73	17.82	17.84	17.82	17.81	23.44	23.5	23.40	23.44	23.40
LTE Band 7	19.45	19.44	19.45	19.32	19.30	22.45	22.49	22.45	22.58	22.52
LTE Band 25	17.77	17.82	17.86	17.74	17.75	23.70	23.65	23.67	23.69	23.70
LTE Band 30	19.37	19.38	19.44	19.54	19.35	21.97	21.88	21.82	21.86	21.89
LTE Band 38	22.20	22.14	22.15	22.15	22.27	22.78	22.73	22.81	22.86	22.74
LTE Band 41(Class 3)	22.40	22.35	22.39	22.27	22.24	23.47	23.36	23.30	23.45	23.42
LTE Band 41(Class 2)	22.26	22.30	22.40	22.31	22.25	25.35	25.45	25.50	25.39	25.37
LTE Band 66	18.08	18.15	18.07	18.01	18.08	24.12	24.14	24.07	24.11	24.18
Sub 6 Band n2	18.48	18.49	18.52	18.48	18.50	23.88	23.85	23.88	23.77	23.90
Sub 6 Band n25	18.75	18.82	18.74	18.76	18.76	24.02	24.04	24.03	24.07	24.06
Sub 6 Band n41	21.17	21.21	21.24	21.27	21.28	23.73	23.84	23.79	23.72	23.89
Sub 6 Band n66	18.65	18.70	18.76	18.06	18.75	24.23	24.38	24.39	24.27	24.28

Based on the most conservative measured triggering distance of 9mm, additional Phablet SAR measurements were required at 8mm from rear side for the above modes

Front side – EUT Moving toward (trigger) to the Phantom

Mode	Distance to DUT Output power (dBm)									
	13[mm]	12[mm]	11[mm]	10[mm]	9[mm]	8[mm]	7[mm]	6[mm]	5[mm]	4[mm]
GSM850 /Voice	31.40	31.59	31.55	31.58	31.41	29.81	29.76	29.80	29.94	29.83
GSM850 /GPRS 1Tx	31.47	31.44	31.49	31.41	31.41	29.90	29.88	29.84	29.73	29.74
GSM850 /GPRS 2Tx	31.54	31.51	31.38	31.38	31.44	28.60	28.75	28.68	28.75	28.69
GSM850 /GPRS 3Tx	29.33	29.24	29.40	29.34	29.37	26.58	26.61	26.66	26.56	26.51
GSM850 /GPRS 4Tx	27.24	27.29	27.22	27.20	27.38	24.44	24.47	24.38	24.50	24.43
GSM1900 /Voice	28.92	28.88	28.88	28.96	28.97	26.58	26.5	26.57	26.57	26.60
GSM1900 /GPRS 1Tx	28.92	28.81	28.86	28.87	28.88	26.41	26.42	26.44	26.51	26.49
GSM1900 /GPRS 2Tx	28.09	27.92	27.98	28.10	28.10	25.53	25.58	25.46	25.49	25.56
GSM1900 /GPRS 3Tx	26.49	26.48	26.5	26.49	26.42	23.80	23.79	23.78	23.68	23.70
GSM1900 /GPRS 4Tx	24.26	24.23	24.38	24.37	24.29	21.46	21.41	21.32	21.40	21.38
PCS RC3/3	23.23	23.13	23.14	23.12	23.27	18.46	18.34	18.36	18.45	18.41
PCS EVDO Rev.0	23.45	23.40	23.35	23.41	23.39	18.34	18.33	18.44	18.45	18.50
PCS EVDO Rev.A	23.34	23.48	23.44	23.32	23.37	18.58	18.43	18.52	18.54	18.47
WCDMA B2	23.10	23.21	23.21	23.18	23.15	18.31	18.22	18.34	18.22	18.37
WCDMA B4	23.06	23.09	23.05	23.18	23.18	18.20	18.07	18.06	18.04	18.09
LTE Band 2	23.58	23.61	23.51	23.54	23.65	17.62	17.61	17.76	17.76	17.74
LTE Band 4	23.47	23.39	23.41	23.44	23.36	17.86	17.77	17.87	17.88	17.89
LTE Band 7	22.40	22.55	22.44	22.48	22.52	19.35	19.4	19.41	19.36	19.45
LTE Band 25	23.80	23.78	23.68	23.81	23.83	17.81	17.83	17.84	17.83	17.75
LTE Band 30	21.99	22.00	21.97	21.88	21.86	19.54	19.45	19.39	19.48	19.49
LTE Band 38	22.88	22.73	22.83	22.89	22.86	22.18	22.15	22.22	22.14	22.27
LTE Band 41(Class 3)	23.40	23.45	23.38	23.46	23.30	22.30	22.36	22.25	22.25	22.26
LTE Band 41(Class 2)	25.48	25.35	25.46	25.43	25.32	22.36	22.35	22.32	22.28	22.35
LTE Band 66	24.20	24.08	24.07	24.05	24.01	18.06	18.19	18.12	18.02	18.18
Sub 6 Band n2	23.86	23.82	23.80	23.84	23.88	18.55	18.49	18.59	18.59	18.47
Sub 6 Band n25	23.97	24.07	24.10	23.95	24.08	18.75	18.78	18.70	18.86	18.90
Sub 6 Band n41	23.70	23.74	23.74	23.72	23.81	21.22	21.27	21.30	21.11	21.26
Sub 6 Band n66	24.27	24.37	24.37	24.22	24.22	18.8	18.74	18.62	18.67	18.65

Front side – EUT Moving away (Release) from the Phantom

Mode	Distance to DUT Output power (dBm)									
	5[mm]	6[mm]	7[mm]	8[mm]	9[mm]	10[mm]	11[mm]	12[mm]	13[mm]	14[mm]
GSM850 /Voice	29.94	29.91	29.92	29.79	29.93	31.41	31.47	31.60	31.41	31.46
GSM850 /GPRS 1Tx	29.77	29.84	29.78	29.89	29.70	31.41	31.54	31.48	31.54	31.56
GSM850 /GPRS 2Tx	28.62	28.79	28.60	28.73	28.67	31.53	31.52	31.46	31.52	31.51
GSM850 /GPRS 3Tx	26.64	26.65	26.54	26.47	26.50	29.37	29.22	29.32	29.40	29.21
GSM850 /GPRS 4Tx	24.39	24.30	24.30	24.34	24.42	27.37	27.32	27.21	27.26	27.24
GSM1900 /Voice	26.58	26.41	26.53	26.52	26.59	28.89	28.91	28.84	28.83	28.99
GSM1900 /GPRS 1Tx	26.40	26.53	26.41	26.42	26.48	28.88	28.80	28.83	28.98	28.82
GSM1900 /GPRS 2Tx	25.43	25.59	25.59	25.54	25.54	28.01	27.96	28.04	28.09	27.90
GSM1900 /GPRS 3Tx	23.73	23.66	23.64	23.69	23.73	26.33	26.39	26.5	26.46	26.46
GSM1900 /GPRS 4Tx	21.32	21.48	21.34	21.39	21.49	24.28	24.25	24.27	24.26	24.38
PCS RC3/3	18.35	18.48	18.37	18.42	18.43	23.15	23.25	23.13	23.16	23.21
PCS EVDO Rev.0	18.48	18.33	18.46	18.37	18.49	23.48	23.40	23.47	23.38	23.37
PCS EVDO Rev.A	18.46	18.51	18.51	18.6	18.4	23.49	23.35	23.42	23.46	23.39
WCDMA B2	18.35	18.30	18.26	18.3	18.37	23.23	23.14	23.15	23.27	23.26
WCDMA B4	18.20	18.10	18.00	18.01	18.00	23.00	23.15	23.00	23.04	23.12
LTE Band 2	17.64	17.71	17.76	17.73	17.75	23.56	23.64	23.68	23.57	23.51
LTE Band 4	17.84	17.73	17.86	17.81	17.83	23.33	23.41	23.39	23.49	23.49
LTE Band 7	19.37	19.34	19.34	19.45	19.42	22.55	22.46	22.40	22.56	22.43
LTE Band 25	17.90	17.89	17.71	17.75	17.89	23.70	23.68	23.73	23.83	23.65
LTE Band 30	19.46	19.5	19.43	19.48	19.40	21.81	21.83	21.80	21.95	21.81
LTE Band 38	22.16	22.14	22.19	22.15	22.28	22.82	22.72	22.81	22.82	22.83
LTE Band 41(Class 3)	22.33	22.31	22.27	22.39	22.23	23.46	23.38	23.49	23.37	23.37
LTE Band 41(Class 2)	22.33	22.38	22.22	22.22	22.31	25.39	25.41	25.32	25.35	25.37
LTE Band 66	18.16	18.11	18.1	18.05	18.07	24.11	24.01	24.06	24.03	24.11
Sub 6 Band n2	18.44	18.42	18.49	18.47	18.41	23.82	23.79	23.82	23.83	23.89
Sub 6 Band n25	18.86	18.81	18.87	18.84	18.74	24.08	23.94	23.92	24.05	23.91
Sub 6 Band n41	21.17	21.24	21.16	21.12	21.18	23.86	23.90	23.71	23.70	23.90
Sub 6 Band n66	18.63	18.78	18.63	18.76	18.69	24.29	24.36	24.23	24.24	24.27

Based on the most conservative measured triggering distance of 8mm, additional Phablet SAR measurements were required at 7mm from rear side for the above modes



Bottom side – EUT Moving toward (trigger) to the Phantom

Mode	Distance to DUT Output power (dBm)									
	19[mm]	18[mm]	17[mm]	65[mm]	15[mm]	14[mm]	13[mm]	12[mm]	11[mm]	10[mm]
GSM850 /Voice	31.43	31.40	31.46	31.48	31.44	29.89	29.77	29.91	29.85	29.77
GSM850 /GPRS 1Tx	31.51	31.60	31.58	31.58	31.57	29.87	29.85	29.76	29.90	29.83
GSM850 /GPRS 2Tx	31.43	31.37	31.54	31.46	31.49	28.76	28.62	28.74	28.67	28.72
GSM850 /GPRS 3Tx	29.40	29.28	29.33	29.23	29.34	26.62	26.65	26.66	26.49	26.54
GSM850 /GPRS 4Tx	27.27	27.25	27.24	27.38	27.34	24.34	24.37	24.48	24.38	24.47
GSM1900 /Voice	28.90	28.85	28.87	28.99	28.85	26.53	26.58	26.60	26.42	26.60
GSM1900 /GPRS 1Tx	28.81	28.87	28.94	28.80	28.91	26.6	26.49	26.42	26.5	26.41
GSM1900 /GPRS 2Tx	27.95	27.91	27.98	28.09	28.05	25.50	25.50	25.54	25.58	25.46
GSM1900 /GPRS 3Tx	26.41	26.30	26.47	26.33	26.32	23.7	23.61	23.78	23.61	23.78
GSM1900 /GPRS 4Tx	24.33	24.29	24.35	24.35	24.29	21.33	21.43	21.35	21.34	21.49
PCS RC3/3	23.27	23.12	23.22	23.19	23.23	18.37	18.40	18.47	18.39	18.41
PCS EVDO Rev.0	23.50	23.42	23.31	23.42	23.46	18.35	18.47	18.36	18.37	18.33
PCS EVDO Rev.A	23.34	23.48	23.32	23.5	23.39	18.49	18.59	18.50	18.46	18.48
WCDMA B2	23.10	23.11	23.12	23.28	23.30	18.32	18.31	18.39	18.35	18.24
WCDMA B4	23.12	23.06	23.06	23.14	23.16	18.02	18.18	18.01	18.17	18.04
LTE Band 2	23.55	23.64	23.62	23.5	23.65	17.76	17.65	17.62	17.78	17.72
LTE Band 4	23.40	23.31	23.43	23.4	23.41	17.74	17.78	17.77	17.79	17.89
LTE Band 7	22.40	22.58	22.58	22.47	22.54	19.39	19.33	19.39	19.44	19.28
LTE Band 25	23.84	23.82	23.72	23.66	23.80	17.73	17.70	17.78	17.87	17.77
LTE Band 30	21.88	21.91	21.89	21.82	21.92	19.35	19.55	19.46	19.54	19.39
LTE Band 38	22.79	22.71	22.74	22.85	22.88	22.15	22.27	22.14	22.20	22.18
LTE Band 41(Class 3)	23.34	23.32	23.46	23.47	23.47	22.25	22.32	22.26	22.31	22.33
LTE Band 41(Class 2)	25.47	25.31	25.35	25.34	25.44	22.36	22.36	22.38	22.21	22.29
LTE Band 66	24.17	24.01	24.14	24.03	24.13	18.05	18.2	18.02	18.11	18.07
Sub 6 Band n2	23.79	23.74	23.75	23.78	23.84	18.50	18.43	18.57	18.52	18.58
Sub 6 Band n25	23.97	23.95	24.03	23.96	23.96	18.79	18.85	18.87	18.88	18.89
Sub 6 Band n41	23.90	23.90	23.83	23.79	23.85	21.10	21.24	21.20	21.14	21.26
Sub 6 Band n66	24.28	24.26	24.35	24.34	24.23	18.64	18.74	18.72	18.67	18.80

Bottom side – EUT Moving away (Release) from the Phantom

Mode	Distance to DUT Output power (dBm)									
	11[mm]	12[mm]	13[mm]	14[mm]	15[mm]	16[mm]	17[mm]	18[mm]	19[mm]	20[mm]
GSM850 /Voice	29.83	29.95	29.87	29.87	29.95	31.50	31.59	31.44	31.43	31.47
GSM850 /GPRS 1Tx	29.85	29.72	29.73	29.79	29.78	31.51	31.51	31.47	31.56	31.56
GSM850 /GPRS 2Tx	28.80	28.70	28.77	28.80	28.61	31.40	31.54	31.47	31.36	31.43
GSM850 /GPRS 3Tx	26.52	26.58	26.65	26.49	26.64	29.20	29.30	29.20	29.26	29.28
GSM850 /GPRS 4Tx	24.30	24.37	24.46	24.31	24.37	27.24	27.31	27.40	27.33	27.23
GSM1900 /Voice	26.58	26.54	26.47	26.59	26.51	28.82	28.8	28.83	28.83	28.85
GSM1900 /GPRS 1Tx	26.45	26.57	26.42	26.51	26.53	28.95	28.93	28.92	28.94	28.86
GSM1900 /GPRS 2Tx	25.41	25.46	25.47	25.51	25.50	28.06	28.03	27.93	28.03	27.90
GSM1900 /GPRS 3Tx	23.70	23.71	23.65	23.79	23.70	26.42	26.46	26.33	26.39	26.35
GSM1900 /GPRS 4Tx	21.33	21.31	21.35	21.37	21.44	24.22	24.27	24.23	24.22	24.23
PCS RC3/3	18.50	18.47	18.50	18.39	18.48	23.17	23.30	23.28	23.18	23.24
PCS EVDO Rev.0	18.49	18.43	18.34	18.40	18.41	23.30	23.34	23.31	23.48	23.34
PCS EVDO Rev.A	18.51	18.59	18.59	18.59	18.60	23.39	23.37	23.39	23.32	23.37
WCDMA B2	18.28	18.38	18.30	18.25	18.21	23.13	23.12	23.24	23.27	23.18
WCDMA B4	18.14	18.14	18.17	18.09	18.14	23.12	23.18	23.04	23.11	23.12
LTE Band 2	17.63	17.79	17.67	17.79	17.63	23.67	23.59	23.64	23.67	23.55
LTE Band 4	17.72	17.89	17.74	17.74	17.73	23.49	23.47	23.46	23.42	23.46
LTE Band 7	19.36	19.36	19.31	19.30	19.38	22.44	22.47	22.54	22.57	22.47
LTE Band 25	17.86	17.75	17.76	17.86	17.82	23.80	23.77	23.84	23.65	23.79
LTE Band 30	19.51	19.53	19.39	19.37	19.50	21.85	21.96	21.98	21.94	21.83
LTE Band 38	22.24	22.12	22.15	22.18	22.21	22.79	22.84	22.73	22.9	22.74
LTE Band 41(Class 3)	22.33	22.28	22.36	22.34	22.23	23.41	23.36	23.34	23.34	23.37
LTE Band 41(Class 2)	22.26	22.36	22.29	22.26	22.28	25.36	25.5	25.49	25.38	25.32
LTE Band 66	18.17	18.14	18.15	18.01	18.20	24.18	24.15	24.17	24.16	24.10
Sub 6 Band n2	18.43	18.53	18.55	18.51	18.56	23.77	23.73	23.72	23.8	23.79
Sub 6 Band n25	18.83	18.74	18.77	18.73	18.83	23.97	24.04	24.03	24.01	24.07
Sub 6 Band n41	21.15	21.18	21.19	21.29	21.23	23.84	23.80	23.85	23.85	23.70
Sub 6 Band n66	18.80	18.63	18.64	18.8	18.68	24.30	24.36	24.34	24.38	24.21

Based on the most conservative measured triggering distance of 14mm, additional Phablet SAR measurements were required at 13mm from rear side for the above modes

## 1.2 Proximity Sensor Coverage for SAR measurements

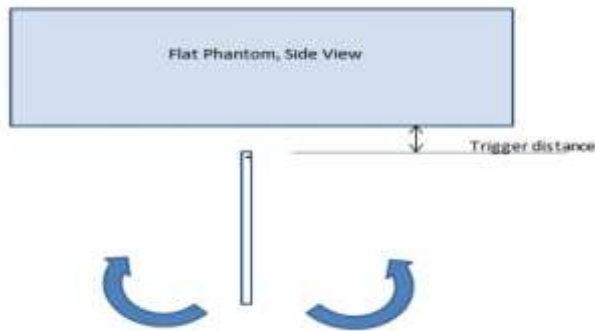
(KDB 616217 D04v01r02 §6.3)

As there is no spatial offset between the antenna and the proximity sensor element, proximity sensor coverage did not need to be assessed.

## 1.3 Proximity Sensor Tilt Angle Assessment

(KDB 616217 D04v01r02 §6.4)

The DUT was positioned directly below the flat phantom at the minimum measured trigger distance with Bottom side parallel to the base of the flat phantom for each band. The EUT was rotated about Bottom side for angles up to  $\pm 45^\circ$ . If the output power increased during the rotation the DUT was moved 1mm toward the phantom and the rotation repeated. This procedure was repeated until the power remained reduced for all angles up to  $\pm 45^\circ$ .



Proximity sensor tilt angle assessment (Bottom side) KDB 616217 §6.4

### Summary of Tablet Tilt Angle influence to Proximity Sensor Triggering (Bottom side)

Tissue	Minimum distance at which power reduction was maintained over-45°	Power reduction status											
		-45°	-40°	-30°	-20°	-10°	0°	10°	20°	30°	40°	45°	
850 MHz Tissue	14 mm	On	On	On	On	On	On	On	On	On	On	On	On
1750 MHz Tissue	14 mm	On	On	On	On	On	On	On	On	On	On	On	On
1900 MHz Tissue	14 mm	On	On	On	On	On	On	On	On	On	On	On	On
2300 MHz Tissue	14 mm	On	On	On	On	On	On	On	On	On	On	On	On
2600 MHz Tissue	14 mm	On	On	On	On	On	On	On	On	On	On	On	On

**1.5 Resulting test positions for Phablet SAR measurements**

Wireless technologies	Position	§6.2 Triggering Distance [mm]	§6.3 Coverage	§6.4 Tilt Angle	Worst case distance for Phablet SAR [mm]
WWAN (GSM850/GSM1900 /CDMA BC1 /WCDMA B2/B4 /LTE B2/B4/B7/B25 /B30/B38/B41(Class3) /B41(Class2)/B66 /SUB6 n2/n25/n41/n66 )	Rear	9	N/A	N/A	8
	Front	8	N/A	N/A	7
	Bottom	14	N/A	N/A	13

Note: FCC KDB Publication 616217 D04v01r02 Section 6 was used as a guideline for selecting SAR test distances for this device when being used in phablet use conditions

## 2. Power reduction Verification for WLAN/Bluetooth Ant

This device uses a power reduction mechanism for SAR compliance for WLAN operations during voice or VoIP held to ear scenarios.

When a user makes or receives a WLAN voice or WLAN VOIP call for WLAN Ant the audio of the call is sent through the Receiver at the top of the device will trigger the Power reduction for WLAN Ant (i.e. reducing output power for Head SAR compliance)

Detailed descriptions of the power reduction mechanism are included in the Main operational description document

### Power Measurement Verification for WLAN/Bluetooth

Condition For Power reduction	Wireless Technologies	Conducted Power[dBm]			
		Un-Triggered (Max Power)		Triggered (Reduced Power)	
		Ant1	Ant2	Ant1	Ant2
RCV-on	2.4GHz 802.11b (Exclude 12/13ch)	18.10	17.95	12.86	11.76
RCV-on	2.4GHz 802.11g (Exclude 12/13ch))	17.23	17.09	11.62	11.39
RCV-on	2.4GHz 802.11n (Exclude 12/13ch)	16.89	16.85	11.21	10.99
RCV-on	2.4GHz 802.11ax (Exclude 12/13ch)	6	6	12.39	12.05
RCV-on	5GHz 802.11a (Exclude 100~144ch)	15.76	16.47	10.03	9.78
RCV-on	5GHz 802.11n 20MHz	15.49	16.1	9.59	9.42
RCV-on	5GHz 802.11n 40MHz	15.06	15.44	10.65	10.44
RCV-on	5GHz 802.11ac 20MHz	15.6	16.09	9.35	9.10
RCV-on	5GHz 802.11ac 40MHz	15.07	15.44	10.65	10.11
RCV-on	5GHz 802.11ac 80MHz	14.09	14.48	10.35	10.50
RCV-on	5GHz 802.11ax 20MHz	15.09	13.08	9.25	9.94
RCV-on	5GHz 802.11ax 40MHz	14.52	12.53	9.30	9.81

RCV-on	5GHz 802.11ax 80MHz	13.12	11.27	9.64	8.65
RCV-on	2.4GHz Bluetooth(1Mbps) (Exclude 0~38,40~78ch)	16.96	16.29	9.47	8.69
RCV-on	2.4GHz Bluetooth(EDR) (Exclude 0~38,40~78ch)	14.74	14.03	8.88	8.11

## Appendix I. – DLCA Power Measurement

## 1. LTE Down-link Carrier Aggregation Conducted Powers

SAR test exclusion for LTE downlink Carrier Aggregation is determined by power measurements according to the number component carriers(CCs) supported by test product implementation. For those configurations required by April 2018 TCBC Workshop notes, conducted power measurements with LTE Carrier Aggregation(CA) (downlink only) active are made in accordance to KDB Publication 941225 D05Av01r02. The RRC connection is only handled by one cell, the primary component carrier (PCC) for downlink and uplink communications. After making a data connection to the PCC, the UE device adds secondary component carrier(s)(SCC) on the downlink only.

### Downlink Carrier aggregation:

1. This device only supports downlink carrier aggregation. For every supported combination of downlink carrier aggregation, power measurements were performed with the downlink carrier aggregation active for the configuration with highest measured maximum conducted power with downlink carrier aggregation inactive measured among the channel bandwidth, modulation, and RB combinations in each frequency band.
2. All control and acknowledge data is sent on uplink channels that operate identical to specifications when downlink carrier aggregation is inactive.
3. Per FCC KDB publication 941225 D05A v01r02, Section C)3)b)ii), PCC uplink channel was selected at downlink carrier aggregation combinations. The downlink PCC channel was paired with the selected PCC uplink channel according to normal configurations without carrier aggregation.
4. For continuous intra-band carrier aggregation, the downlink channel spacing between the component carriers was set to multiple of 300kHz less than the nominal channel spacing defined in section 5.4.1A of 3GPP TS 36.521.
5. For non-continuous intra-band carrier aggregation, the downlink channel spacing between the component carriers was set to be larger than the nominal channel spacing and provided maximum separation between the component carriers.
6. All selected downlink channels remained fully within the downlink transmission band of the respective component carrier.

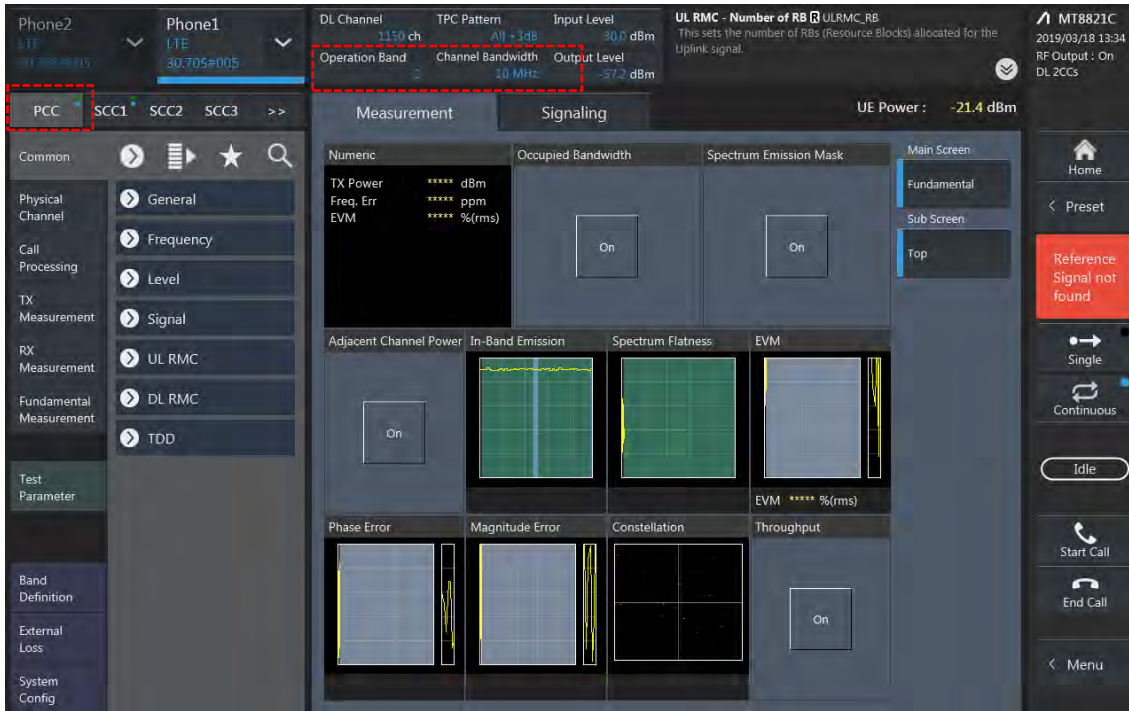


Power Measurement setup

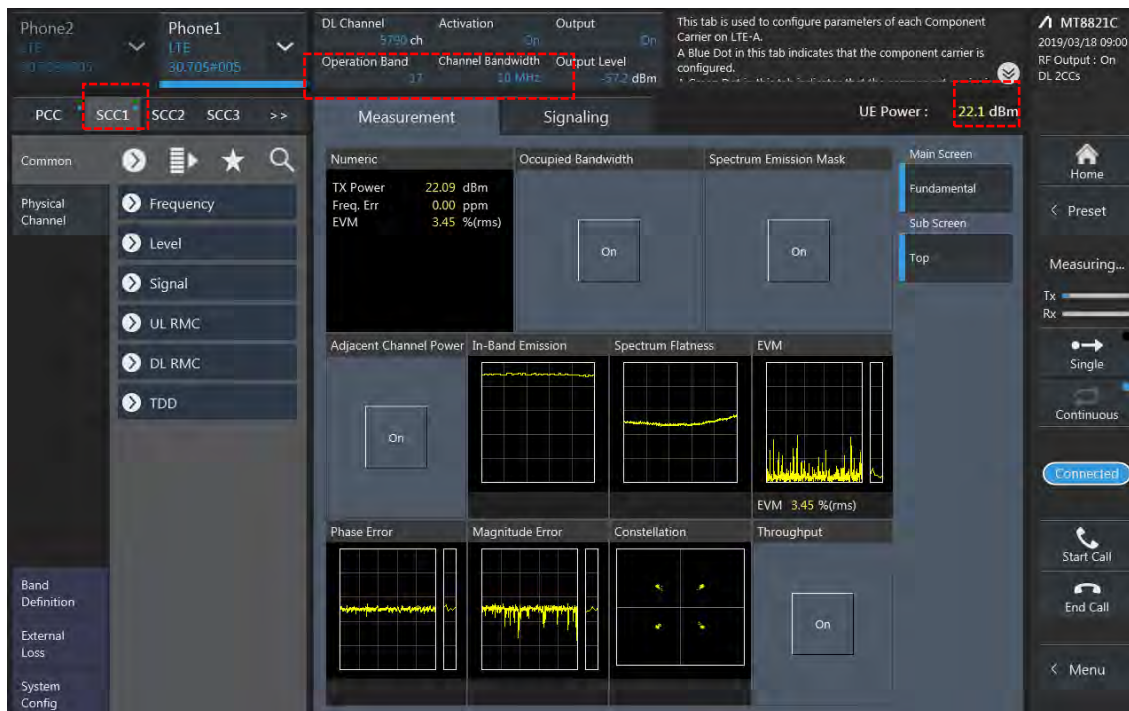


### LTE Down Link 2CA Call Setup

#### PCC Setting : Channel/ RB/ BW/ Modulation



#### SCC Setting : Channel/ RB/ BW/ Modulation and call Connection



**2CA Downlink Carrier aggregation conducted Powers**

LTE Downlink 2CA Maximum Conducted Power

Combination (MAX)	PCC									SCC				Tx Power		Deviation
	Band	BW	PCC UL Channel	PCC UL Frequency	PCC DL Channel	PCC DL Frequency	Modulation	RB	offset	Band	BW	SCC DL Channel	SCC DL Frequency	LTE Single Carrier Tx Power (dBm)	LTE Tx Power with DL CA Enabled (dBm)	
2C	2	5	19175	1907.5	1175	1987.5	QPSK	1	12	2	20	1058	1975.8	23.89	23.84	-0.05
2A-2A	2	5	19175	1907.5	1175	1987.5	QPSK	1	12	2	20	700	1940	23.89	23.92	0.03
2A-4A(0)	2	3	19185	1908.5	1185	1988.5	QPSK	1	0	4	20	2175	2132.5	23.88	23.99	0.11
2A-4A(1)	2	5	19175	1907.5	1175	1987.5	QPSK	1	12	4	10	2175	2132.5	23.89	23.94	0.05
2A-4A(2)	2	5	19175	1907.5	1175	1987.5	QPSK	1	12	4	20	2175	2132.5	23.89	23.9	0.01
2A-4A(0,2)	4	5	20375	1752.5	2375	2152.5	QPSK	1	12	2	20	900	1960	23.91	23.9	-0.01
2A-4A(1)	4	5	20375	1752.5	2375	2152.5	QPSK	1	12	2	10	900	1960	23.91	23.88	-0.03
2A-5A(0,1)	2	5	19175	1907.5	1175	1987.5	QPSK	1	12	5	10	2525	881.5	23.89	23.97	0.08
2A-5A(0)	5	5	20425	826.5	2425	871.5	QPSK	1	12	2	20	900	1960	24.52	24.55	0.03
2A-5A(1)	5	5	20425	826.5	2425	871.5	QPSK	1	12	2	10	900	1960	24.52	24.55	0.03
2A-7A	2	5	19175	1907.5	1175	1987.5	QPSK	1	12	7	20	3100	2655	23.89	23.99	0.10
2A-7A	7	5	20775	2502.5	2775	2622.5	QPSK	1	12	2	20	900	1960	22.8	22.61	-0.19
2A-12A(0,1,2)	2	5	19175	1907.5	1175	1987.5	QPSK	1	12	12	10	5095	737.5	23.89	23.98	0.09
2A-12A(0)	12	5	23095	707.5	5095	737.5	QPSK	1	12	2	20	900	1960	24.69	24.75	0.06
2A-12A(1)	12	3	23025	700.5	5025	730.5	QPSK	1	7	2	20	900	1960	24.75	24.72	-0.03
2A-12A(2)	12	5	23095	707.5	5095	737.5	QPSK	1	12	2	10	900	1960	24.69	24.77	0.08
2A-13A(0,1)	2	5	19175	1907.5	1175	1987.5	QPSK	1	12	13	10	5230	751	23.89	23.98	0.09
2A-13A(0)	13	10	23230	782	5230	751	QPSK	1	0	2	20	900	1960	24.49	24.65	0.16
2A-13A(1)	13	10	23230	782	5230	751	QPSK	1	0	2	10	900	1960	24.49	24.64	0.15
2A-14A	2	5	19175	1907.5	1175	1987.5	QPSK	1	12	14	10	5330	763	23.89	23.99	0.10
2A-14A	14	10	23330	793	5330	763	QPSK	1	0	2	20	900	1960	24.35	24.32	-0.03
2A-29A	2	5	19175	1907.5	1175	1987.5	QPSK	1	12	29	10	9715	722.5	23.89	23.99	0.10
2A-30A	2	5	19175	1907.5	1175	1987.5	QPSK	1	12	30	10	9820	2355	23.89	23.89	0.00
2A-30A	30	5	27710	2310	9820	2355	QPSK	1	12	2	20	900	1960	23.56	23.71	0.15
2A-66A(0)	2	3	19185	1908.5	1185	1988.5	QPSK	1	0	66	20	66786	2145	23.88	23.99	0.11
2A-66A(1)	2	5	19175	1907.5	1175	1987.5	QPSK	1	12	66	10	66786	2145	23.89	23.96	0.07
2A-66A(2)	2	5	19175	1907.5	1175	1987.5	QPSK	1	12	66	20	66786	2145	23.89	23.95	0.06
2A-66A(0,2)	66	15	132597	1772.5	67061	2172.5	QPSK	1	0	2	20	900	1960	24.38	24.47	0.09
2A-66A(1)	66	5	132322	1745	66786	2145	QPSK	1	12	2	10	900	1960	24.28	24.2	-0.08
2A-71A(0)	2	5	19175	1907.5	1175	1987.5	QPSK	1	12	71	20	68786	637	23.89	23.94	0.05
2A-71A(1)	2	5	19175	1907.5	1175	1987.5	QPSK	1	12	71	10	68786	637	23.89	24.01	0.12
2A-71A(0)	71	5	133147	665.5	68611	619.5	QPSK	1	24	2	20	900	1960	25.02	24.91	-0.11
2A-71A(1)	71	5	133147	665.5	68611	619.5	QPSK	1	24	2	10	900	1960	25.02	24.93	-0.09
4A-4A(0)	4	5	20375	1752.5	2375	2152.5	QPSK	1	12	4	20	2050	2120	23.91	23.83	-0.08
4A-4A(1)	4	5	20375	1752.5	2375	2152.5	QPSK	1	12	4	10	2000	2115	23.91	23.82	-0.09
4A-5A(0,1)	4	5	20375	1752.5	2375	2152.5	QPSK	1	12	5	10	2525	881.5	23.91	23.85	-0.06
4A-5A(0)	5	5	20425	826.5	2425	871.5	QPSK	1	12	4	10	2175	2132.5	24.52	24.59	0.07
4A-5A(1)	5	5	20425	826.5	2425	871.5	QPSK	1	12	4	20	2175	2132.5	24.52	24.58	0.06

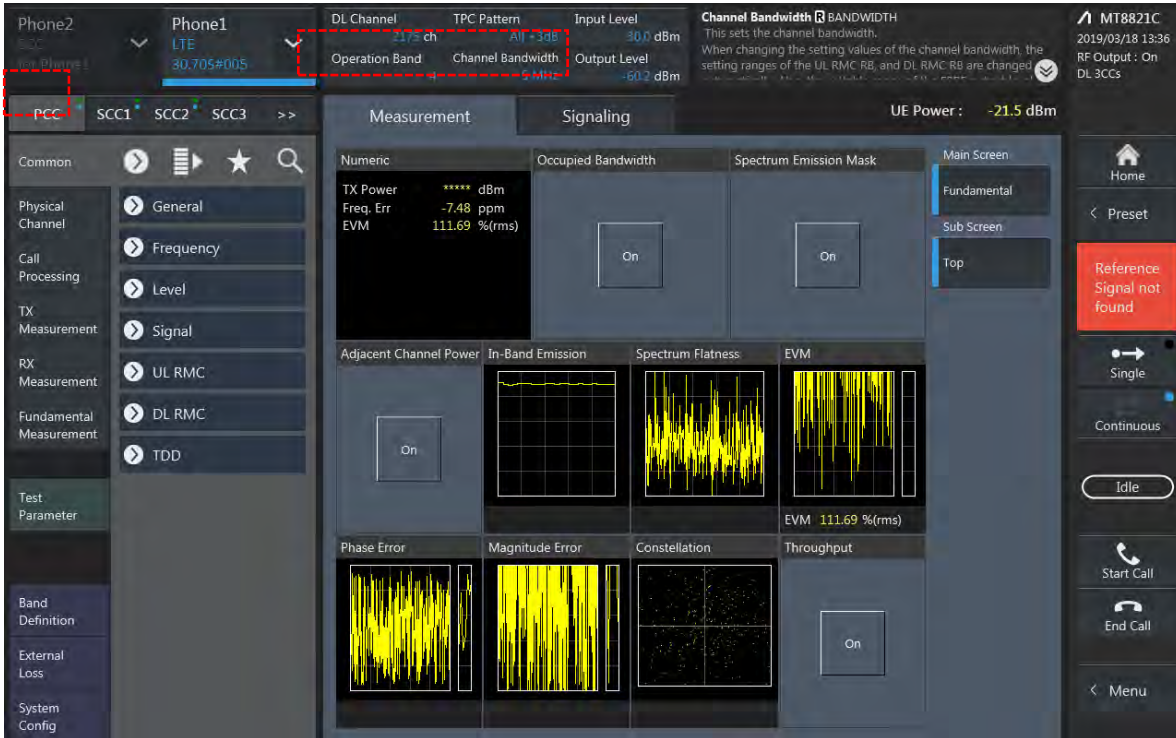
Combination (MAX)	PCC									SCC				Tx Power		Deviation
	Band	BW	PCC UL Channel	PCC UL Frequency	PCC DL Channel	PCC DL Frequency	Modulation	RB	offset	Band	BW	SCC DL Channel	SCC DL Frequency	LTE Single Carrier Tx Power (dBm)	LTE Tx Power with DL CA Enabled(dBm)	
4A-7A(0,1)	4	5	20375	1753	2375	2153	QPSK	1	12	7	20	3100	2655	23.91	23.82	-0.09
4A-7A(0)	7	5	20775	2503	2775	2623	QPSK	1	12	4	10	2175	2133	22.8	22.71	-0.09
4A-7A(1)	7	5	20775	2503	2775	2623	QPSK	1	12	4	20	2175	2133	22.8	22.74	-0.06
4A-12A(0,1,2,3,4)	4	5	20375	1753	2375	2153	QPSK	1	12	12	10	5095	737.5	23.91	23.87	-0.04
4A-12A(5)	4	5	20375	1753	2375	2153	QPSK	1	12	12	5	5095	737.5	23.91	23.84	-0.07
4A-12A(0,3)	12	5	23095	707.5	5095	737.5	QPSK	1	12	4	10	2175	2133	24.69	24.74	0.05
4A-12A(1,4)	12	5	23095	707.5	5095	737.5	QPSK	1	12	4	20	2175	2133	24.69	24.78	0.09
4A-12A(2)	12	3	23025	700.5	5025	730.5	QPSK	1	7	4	20	2175	2133	24.75	24.78	0.03
4A-12A(5)	12	5	23095	707.5	5095	737.5	QPSK	1	12	4	15	2175	2133	24.69	24.75	0.06
4A-13A(0,1)	4	5	20375	1753	2375	2153	QPSK	1	12	13	10	5230	751	23.91	23.78	-0.13
4A-13A(0)	13	10	23230	782	5230	751	QPSK	1	0	4	20	2175	2133	24.49	24.53	0.04
4A-13A(1)	13	10	23230	782	5230	751	QPSK	1	0	4	10	2175	2133	24.49	24.58	0.09
4A-29A	4	5	20375	1753	2375	2153	QPSK	1	12	29	10	9715	722.5	23.91	23.84	-0.07
4A-71A	4	5	20375	1753	2375	2153	QPSK	1	12	71	20	68786	637	23.91	23.88	-0.03
4A-71A	71	5	133147	665.5	68611	619.5	QPSK	1	24	4	20	2175	2133	25.02	24.94	-0.08
5B	5	5	20425	826.5	2425	871.5	QPSK	1	12	5	10	2497	878.7	24.52	24.6	0.08
5A-5A(0)	5	5	20425	826.5	2425	871.5	QPSK	1	12	5	10	2600	889	24.52	24.57	0.05
5A-5A(1)	5	3	20415	825.5	2415	870.5	QPSK	1	7	5	5	2625	891.5	24.53	24.61	0.08
5A-7A(0)	5	3	20415	825.5	2415	870.5	QPSK	1	7	7	20	3100	2655	24.53	24.58	0.05
5A-7A(1)	5	5	20425	826.5	2425	871.5	QPSK	1	12	7	20	3100	2655	24.52	24.61	0.09
5A-7A(0,1)	7	10	20800	2505	2800	2625	QPSK	1	0	5	10	2525	881.5	22.74	22.66	-0.08
5A-30A	5	5	20425	826.5	2425	871.5	QPSK	1	12	30	10	9820	2355	24.52	24.6	0.08
5A-30A	30	5	27710	2310	9820	2355	QPSK	1	12	5	10	2525	881.5	23.56	23.71	0.15
5A-38A	5	5	20425	826.5	2425	871.5	QPSK	1	12	38	20	38000	2595	24.52	24.65	0.13
5A-66A	5	5	20425	826.5	2425	871.5	QPSK	1	12	66	20	66786	2145	24.52	24.58	0.06
5A-66A	66	15	132597	1773	67061	2173	QPSK	1	0	5	10	2525	881.5	24.38	24.38	0.00
7C(0,2)	7	20	20850	2510	2850	2630	QPSK	1	99	7	20	3048	2650	22.63	22.58	-0.05
7C(1)	7	10	20800	2505	2800	2625	QPSK	1	0	7	20	2944	2639	22.74	22.64	-0.10
7A-7A(0)	7	5	20775	2503	2775	2623	QPSK	1	12	7	15	3375	2683	22.8	22.65	-0.15
7A-7A(1)	7	5	20775	2503	2775	2623	QPSK	1	12	7	20	3350	2680	22.8	22.68	-0.12
7A-7A(2)	7	5	20775	2503	2775	2623	QPSK	1	12	7	10	3400	2685	22.8	22.66	-0.14
7A-7A(3)	7	10	20800	2505	2800	2625	QPSK	1	0	7	20	3350	2680	22.74	22.59	-0.15
7A-12A	7	5	20775	2503	2775	2623	QPSK	1	12	12	10	5095	737.5	22.8	22.7	-0.10
7A-12A	12	5	23095	707.5	5095	737.5	QPSK	1	12	7	20	3100	2655	24.69	24.79	0.10
7A-13A	7	5	20775	2503	2775	2623	QPSK	1	12	13	10	5230	751	22.8	22.71	-0.09
7A-13A	13	10	23230	782	5230	751	QPSK	1	0	7	20	3100	2655	24.49	24.59	0.10
7A-66A	7	5	20775	2503	2775	2623	QPSK	1	12	66	20	66786	2145	22.8	22.75	-0.05
7A-66A	66	15	132597	1773	67061	2173	QPSK	1	0	7	20	3100	2655	24.38	24.46	0.08
12B	12	5	23095	707.5	5095	737.5	QPSK	1	12	12	5	5047	732.7	24.69	24.74	0.05
12A-30A	12	5	23095	707.5	5095	737.5	QPSK	1	12	30	10	9820	2355	24.69	24.81	0.12
12A-30A	30	5	27710	2310	9820	2355	QPSK	1	12	12	10	5095	737.5	23.56	23.58	0.02



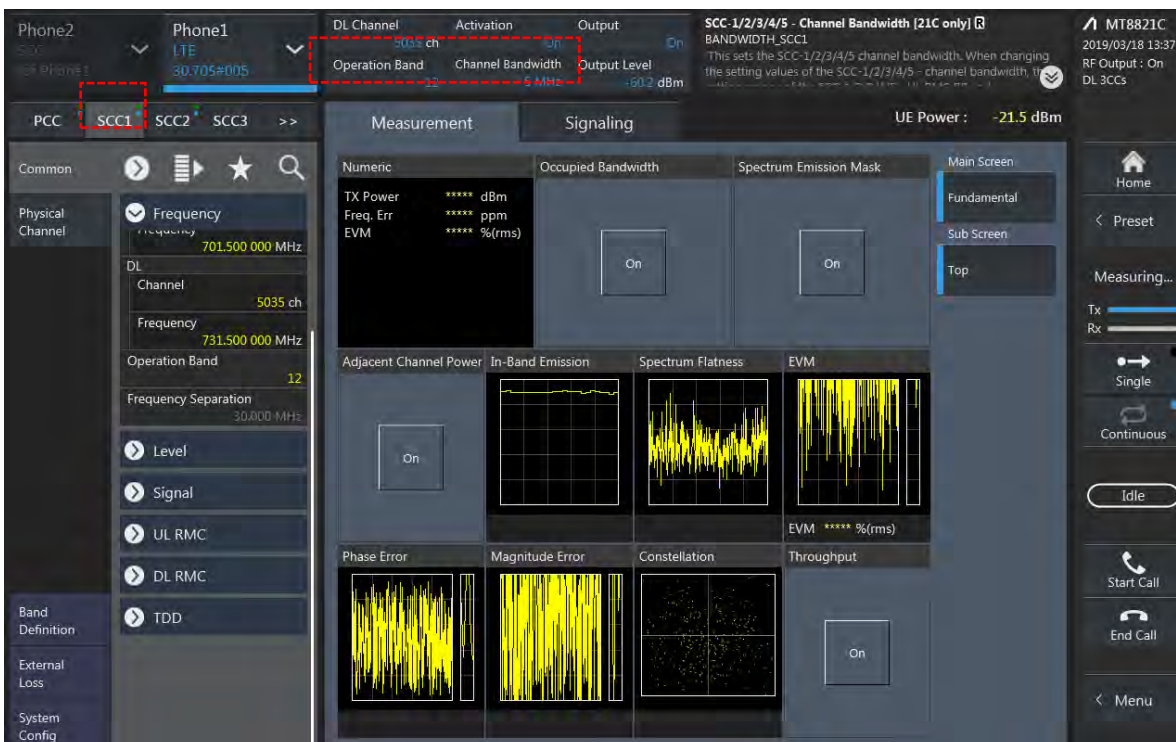
Combination (MAX)	PCC									SCC				Tx Power		Deviation
	Band	BW	PCC UL Channel	PCC UL Frequency	PCC DL Channel	PCC DL Frequency	Modulation	RB	offset	Band	BW	SCC DL Channel	SCC DL Frequency	LTE Single Carrier Tx Power (dBm)	LTE Tx Power with DL CA Enabled(dBm)	
12A-66A(0,3)	12	5	23095	707.5	5095	737.5	QPSK	1	12	66	10	66786	2145	24.69	24.73	0.04
12A-66A(1,4)	12	5	23095	707.5	5095	737.5	QPSK	1	12	66	20	66786	2145	24.69	24.79	0.10
12A-66A(2)	12	3	23025	700.5	5025	730.5	QPSK	1	7	66	20	66786	2145	24.75	24.81	0.06
12A-66A(5)	12	5	23095	707.5	5095	737.5	QPSK	1	12	66	15	66786	2145	24.69	24.74	0.05
12A-66A(1,2,4)	66	15	132597	1773	67061	2173	QPSK	1	0	12	10	5095	737.5	24.38	24.56	0.18
12A-66A(0,3)	66	5	132322	1745	66786	2145	QPSK	1	12	12	10	5095	737.5	24.28	24.23	-0.05
12A-66A(5)	66	15	132597	1773	67061	2173	QPSK	1	0	12	5	5095	737.5	24.38	24.49	0.11
13A-66A	13	10	23230	782	5230	751	QPSK	1	0	66	20	66786	2145	24.49	24.66	0.17
13A-66A	66	15	132597	1773	67061	2173	QPSK	1	0	13	10	5230	751	24.38	24.53	0.15
14A-30A	14	10	23330	793	5330	763	QPSK	1	0	30	10	9820	2355	24.35	24.53	0.18
14A-30A	30	5	27710	2310	9820	2355	QPSK	1	12	14	10	5330	763	23.56	23.69	0.13
14A-66A	14	10	23330	793	5330	763	QPSK	1	0	66	20	66786	2145	24.35	24.38	0.03
14A-66A	66	15	132597	1773	67061	2173	QPSK	1	0	14	10	5330	763	24.38	24.52	0.14
25A-25A(0)	25	10	26640	1910	8640	1990	QPSK	1	0	25	10	8090	1935	23.98	23.99	0.01
25A-25A(1)	25	10	26640	1910	8640	1990	QPSK	1	0	25	20	8140	1940	23.98	23.96	-0.02
25A-26A(0)	25	10	26640	1910	8640	1990	QPSK	1	0	26	15	8865	876.5	23.98	23.99	0.01
25A-26A(1,2)	25	10	26640	1910	8640	1990	QPSK	1	0	26	10	8865	876.5	23.98	24.03	0.05
25A-26A(0)	26	3	26705	815.5	8705	860.5	QPSK	1	14	25	20	8365	1963	24.54	24.71	0.17
25A-26A(1)	26	3	26705	815.5	8705	860.5	QPSK	1	14	25	10	8365	1963	24.54	24.51	-0.03
25A-26A(2)	26	5	26715	816.5	8715	861.5	QPSK	1	12	25	10	8365	1963	24.53	24.66	0.13
25A-41A	25	10	26640	1910	8640	1990	QPSK	1	0	41	20	40620	2593	23.98	24.04	0.06
26A-41A	26	5	26715	816.5	8715	861.5	QPSK	1	12	41	20	40620	2593	24.53	24.63	0.10
29A-30A	30	5	27710	2310	9820	2355	QPSK	1	12	29	10	9715	722.5	23.56	23.63	0.07
30A-66A	30	5	27710	2310	9820	2355	QPSK	1	12	66	20	66786	2145	23.56	23.65	0.09
30A-66A	66	15	132597	1773	67061	2173	QPSK	1	0	30	10	9820	2355	24.38	24.46	0.08
38C	38	15	37825	2578	37825	2578	QPSK	1	0	38	15	37975	2593	22.97	23.01	0.04
41C(0,2) PC3	41	15	39725	2504	39725	2504	QPSK	1	0	41	20	39896	2521	23.65	23.63	-0.02
41C(1) PC3	41	5	40148	2546	40148	2546	QPSK	1	0	41	20	40031	2534	23.66	23.61	-0.05
41C(3) PC3	41	10	39700	2501	39700	2501	QPSK	1	0	41	20	39844	2515	23.63	23.66	0.03
41C(0,2,3) PC2	41	20	40185	2550	40185	2550	QPSK	1	49	41	20	40383	2569	25.93	25.91	-0.02
41C(1) PC2	41	5	40148	2546	40148	2546	QPSK	1	12	41	20	40265	2558	25.95	25.93	-0.02
41A-41A(0) PC3	41	15	39725	2504	39725	2504	QPSK	1	0	41	20	41490	2680	23.65	23.61	-0.04
41A-41A(1) PC3	41	5	40148	2546	40148	2546	QPSK	1	0	41	20	41490	2680	23.66	23.59	-0.07
41A-41A(0) PC2	41	20	40185	2550	40185	2550	QPSK	1	49	41	20	41490	2680	25.93	25.91	-0.02
41A-41A(1) PC2	41	5	40148	2546	40148	2546	QPSK	1	12	41	20	41490	2680	25.95	25.94	-0.01
66A-66A	66	15	132597	1773	67061	2173	QPSK	1	0	66	20	67236	2190	24.38	24.51	0.13
66B	66	15	132597	1773	67061	2173	QPSK	1	0	66	5	66968	2163	24.38	24.49	0.11
66C	66	15	132597	1773	67061	2173	QPSK	1	0	66	20	66890	2155	24.38	24.35	-0.03
66A-71A	66	15	132597	1773	67061	2173	QPSK	1	0	71	20	68786	637	24.38	24.53	0.15
66A-71A	71	5	133147	665.5	68611	619.5	QPSK	1	24	66	20	66786	2145	25.02	24.88	-0.14

## LTE Down Link 3CA Call Setup

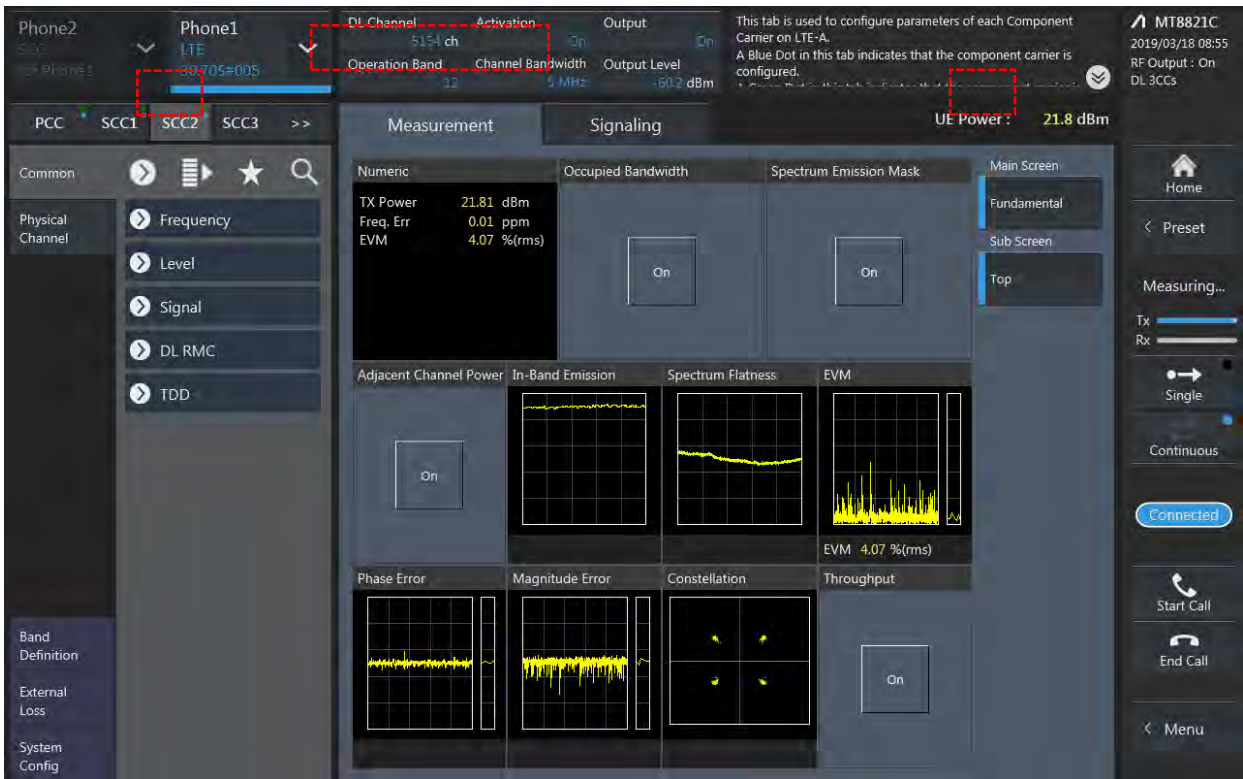
### 1) PCC Setting: Channel /RB/BW/Modulation



### 2) SCC1 Setting : Channel /RB/BW/Modulation



3) SCC2 Setting (Channel /RB/BW/Modulation )and call Connection





### 3CA Downlink Carrier aggregation conducted Powers

#### LTE Downlink 3CA Maximum Conducted Power

Combination	PCC									SCC				SCC				Tx Power		Deviation
	Band	BW	PCC UL Channel	PCC UL Frequency	PCC DL Channel	PCC DL Frequency	Modulation	RB	offset	Band	BW	SCC DL Channel	SCC DL Frequency	Band	BW	SCC DL Channel	SCC DL Frequency	LTE Single Carrier Tx Power (dBm)	LTE Tx Power with DL CA Enabled(dBm)	
2A-2A-4A	2	5	19175	1907.5	1175	1987.5	QPSK	1	12	2	20	700	1940	4	20	2175	2132.5	23.89	23.99	0.10
2A-2A-4A	4	5	20375	1752.5	2375	2152.5	QPSK	1	12	2	20	900	1960	2	20	1100	1980	23.91	23.84	-0.07
2A-2A-5A	2	5	19175	1907.5	1175	1987.5	QPSK	1	12	2	20	700	1940	5	10	2525	881.5	23.89	24.05	0.16
2A-2A-5A	5	5	20425	826.5	2425	871.5	QPSK	1	12	2	20	900	1960	2	20	1100	1980	24.52	24.61	0.09
2A-2A-7A	2	5	19175	1907.5	1175	1987.5	QPSK	1	12	2	20	700	1940	7	20	3100	2655	23.89	23.97	0.08
2A-2A-7A	7	5	20775	2502.5	2775	2622.5	QPSK	1	12	2	20	900	1960	2	20	1100	1980	22.8	22.61	-0.19
2A-2A-12A	2	5	19175	1907.5	1175	1987.5	QPSK	1	12	2	20	700	1940	12	10	5095	737.5	23.89	24.02	0.13
2A-2A-12A	12	5	23095	707.5	5095	737.5	QPSK	1	12	2	20	900	1960	2	20	1100	1980	24.69	24.71	0.02
2A-2A-13A	2	5	19175	1907.5	1175	1987.5	QPSK	1	12	2	20	700	1940	13	10	5230	751	23.89	24.02	0.13
2A-2A-13A	13	10	23230	782	5230	751	QPSK	1	0	2	20	900	1960	2	20	1100	1980	24.49	24.56	0.07
2A-2A-14A	2	5	19175	1907.5	1175	1987.5	QPSK	1	12	2	20	700	1940	14	10	5330	763	23.89	24.04	0.15
2A-2A-14A	14	10	23330	793	5330	763	QPSK	1	0	2	20	900	1960	2	20	1100	1980	24.35	24.33	-0.02
2A-2A-29A	2	5	19175	1907.5	1175	1987.5	QPSK	1	12	2	20	700	1940	29	10	9715	722.5	23.89	23.96	0.07
2A-2A-30A	2	5	19175	1907.5	1175	1987.5	QPSK	1	12	2	20	700	1940	30	10	9820	2355	23.89	24.02	0.13
2A-2A-30A	30	5	27710	2310	9820	2355	QPSK	1	12	2	20	900	1960	2	20	1100	1980	23.56	23.72	0.16
2A-2A-66A	2	5	19175	1907.5	1175	1987.5	QPSK	1	12	2	20	700	1940	66	20	66786	2145	23.89	24.01	0.12
2A-2A-66A	66	15	132597	1772.5	67061	2172.5	QPSK	1	0	2	20	900	1960	2	20	1100	1980	24.38	24.52	0.14
2C-66A	2	5	19175	1907.5	1175	1987.5	QPSK	1	12	2	20	1058	1975.8	66	20	66786	2145	23.89	24.02	0.13
2C-66A	66	15	132597	1772.5	67061	2172.5	QPSK	1	0	2	20	900	1960	2	20	1098	1979.8	24.38	24.56	0.18
2A-2A-71A	2	5	19175	1907.5	1175	1987.5	QPSK	1	12	2	20	700	1940	71	20	68786	637	23.89	24.01	0.12
2A-2A-71A	71	5	133147	665.5	68611	619.5	QPSK	1	24	2	20	900	1960	2	20	1100	1980	25.02	24.91	-0.11
2A-4A-4A	2	5	19175	1907.5	1175	1987.5	QPSK	1	12	4	20	2175	2132.5	4	10	2350	2150	23.89	23.98	0.09
2A-4A-4A	4	5	20375	1752.5	2375	2152.5	QPSK	1	12	4	20	2050	2120	2	20	900	1960	23.91	23.81	-0.10
2A-4A-5A	2	5	19175	1907.5	1175	1987.5	QPSK	1	12	4	20	2175	2132.5	5	10	2525	881.5	23.89	23.97	0.08
2A-4A-5A	4	5	20375	1752.5	2375	2152.5	QPSK	1	12	2	20	900	1960	5	10	2525	881.5	23.91	23.82	-0.09
2A-4A-5A	5	5	20425	826.5	2425	871.5	QPSK	1	12	2	20	900	1960	4	20	2175	2132.5	24.52	24.66	0.14
2A-4A-7A	2	5	19175	1907.5	1175	1987.5	QPSK	1	12	4	20	2175	2132.5	7	20	3100	2655	23.89	23.95	0.06
2A-4A-7A	4	5	20375	1752.5	2375	2152.5	QPSK	1	12	2	20	900	1960	7	20	3100	2655	23.91	23.98	0.07
2A-4A-7A	7	5	20775	2502.5	2775	2622.5	QPSK	1	12	2	20	900	1960	4	20	2175	2132.5	22.8	22.66	-0.14
2A-4A-12A	2	5	19175	1907.5	1175	1987.5	QPSK	1	12	4	20	2175	2132.5	12	10	5095	737.5	23.89	23.92	0.03
2A-4A-12A	4	5	20375	1752.5	2375	2152.5	QPSK	1	12	2	20	900	1960	12	10	5095	737.5	23.91	23.84	-0.07
2A-4A-12A	12	5	23095	707.5	5095	737.5	QPSK	1	12	2	20	900	1960	4	20	2175	2132.5	24.69	24.72	0.03
2A-4A-13A	2	5	19175	1907.5	1175	1987.5	QPSK	1	12	4	20	2175	2132.5	13	10	5230	751	23.89	24.00	0.11
2A-4A-13A	4	5	20375	1752.5	2375	2152.5	QPSK	1	12	2	20	900	1960	13	10	5230	751	23.91	23.81	-0.10
2A-4A-13A	13	10	23230	782	5230	751	QPSK	1	0	2	20	900	1960	4	20	2175	2132.5	24.49	24.65	0.16
2A-4A-29A	2	5	19175	1907.5	1175	1987.5	QPSK	1	12	4	20	2175	2132.5	29	10	9715	722.5	23.89	23.95	0.06
2A-4A-29A	4	5	20375	1752.5	2375	2152.5	QPSK	1	12	2	20	900	1960	29	10	9715	722.5	23.91	23.85	-0.06
2A-4A-30A	2	5	19175	1907.5	1175	1987.5	QPSK	1	12	4	20	2175	2132.5	30	10	9820	2355	23.89	24.04	0.15
2A-4A-30A	4	5	20375	1752.5	2375	2152.5	QPSK	1	12	2	20	900	1960	30	10	9820	2355	23.91	24.02	0.11
2A-4A-30A	30	5	27710	2310	9820	2355	QPSK	1	12	2	20	900	1960	4	20	2175	2132.5	23.56	23.72	0.16
2A-4A-71A	2	5	19175	1907.5	1175	1987.5	QPSK	1	12	4	20	2175	2132.5	71	20	68786	637	23.89	23.98	0.09
2A-4A-71A	4	5	20375	1752.5	2375	2152.5	QPSK	1	12	2	20	900	1960	71	20	68786	637	23.91	23.74	-0.17
2A-4A-71A	71	5	133147	665.5	68611	619.5	QPSK	1	24	2	20	900	1960	4	20	2175	2132.5	25.02	24.83	-0.19
2A-5B	2	5	19175	1907.5	1175	1987.5	QPSK	1	12	5	10	2525	881.5	5	5	2453	874.3	23.89	23.97	0.08
2A-5B	5	5	20425	826.5	2425	871.5	QPSK	1	12	5	10	2497	878.7	2	20	900	1960	24.52	24.62	0.10
2A-5A-7A	2	5	19175	1907.5	1175	1987.5	QPSK	1	12	5	10	2525	881.5	7	20	3100	2655	23.89	23.99	0.10
2A-5A-7A	5	5	20425	826.5	2425	871.5	QPSK	1	12	2	20	900	1960	7	20	3100	2655	24.52	24.58	0.06
2A-5A-30A	2	5	19175	1907.5	1175	1987.5	QPSK	1	12	5	10	2525	881.5	30	10	9820	2355	23.89	24.06	0.17
2A-5A-30A	5	5	20425	826.5	2425	871.5	QPSK	1	12	2	20	900	1960	30	10	9820	2355	24.52	24.62	0.10
2A-5A-30A	30	5	27710	2310	9820	2355	QPSK	1	12	2	20	900	1960	5	10	2525	881.5	23.56	23.71	0.15
2A-5A-66A	2	5	19175	1907.5	1175	1987.5	QPSK	1	12	5	10	2525	881.5	66	20	66786	2145	23.89	24.01	0.12
2A-5A-66A	5	5	20425	826.5	2425	871.5	QPSK	1	12	2	20	900	1960	66	20	66786	2145	24.52	24.60	0.08
2A-5A-66A	66	15	132597	1772.5	67061	2172.5	QPSK	1	0	2	20	900	1960	5	10	2525	881.5	24.38	24.56	0.18
2A-7A-7A	2	5	19175	1907.5	1175	1987.5	QPSK	1	12	7	20	3100	2655	7	20	3350	2680	23.89	24.01	0.12
2A-7A-7A	7	5	20775	2502.5	2775	2622.5	QPSK	1	12	7	20	3350	2680	2	20	900	1960	22.8	22.71	-0.09
2A-7C	2	5	19175	1907.5	1175	1987.5	QPSK	1	12	7	20	3100	2655	7	20	3298	2674.8	23.89	24.06	0.17
2A-7C	7	20	20850	2510	2850	2630	QPSK	1	99	7	20	3048	2649.8	2	20	900	1960	22.63	22.75	0.12

2A-7A-12A	2	5	19175	1907.5	1175	1987.5	QPSK	1	12	7	20	3100	2655	12	10	5095	737.5	23.89	24.07	0.18
2A-7A-12A	7	5	20775	2502.5	2775	2622.5	QPSK	1	12	2	20	900	1960	12	10	5095	737.5	22.8	22.67	-0.13
2A-7A-12A	12	5	23095	707.5	5095	737.5	QPSK	1	12	2	20	900	1960	7	20	3100	2655	24.69	24.85	0.16
2A-7A-13A	2	5	19175	1907.5	1175	1987.5	QPSK	1	12	7	20	3100	2655	13	10	5230	751	23.89	23.99	0.10
2A-7A-13A	7	5	20775	2502.5	2775	2622.5	QPSK	1	12	2	20	900	1960	13	10	5230	751	22.8	22.80	0.00
2A-7A-13A	13	10	23230	782	5230	751	QPSK	1	0	2	20	900	1960	7	20	3100	2655	24.49	24.45	-0.04
2A-7A-66A	2	5	19175	1907.5	1175	1987.5	QPSK	1	12	7	20	3100	2655	66	20	66786	2145	23.89	24.03	0.14
2A-7A-66A	7	5	20775	2502.5	2775	2622.5	QPSK	1	12	2	20	900	1960	66	20	66786	2145	22.8	22.82	0.02
2A-7A-66A	66	15	132597	1772.5	67061	2172.5	QPSK	1	0	2	20	900	1960	7	20	3100	2655	24.38	24.48	0.10
2A-12B	2	5	19175	1907.5	1175	1987.5	QPSK	1	12	12	5	5095	737.5	12	5	5047	732.7	23.89	24.02	0.13
2A-12B	12	5	23095	707.5	5095	737.5	QPSK	1	12	12	5	5047	732.7	2	20	900	1960	24.69	24.82	0.13
2A-12A-30A	2	5	19175	1907.5	1175	1987.5	QPSK	1	12	12	10	5095	737.5	30	10	9820	2355	23.89	24.97	1.08
2A-12A-30A	12	5	23095	707.5	5095	737.5	QPSK	1	12	2	20	900	1960	30	10	9820	2355	24.69	24.86	0.17
2A-12A-30A	30	5	27710	2310	9820	2355	QPSK	1	12	2	20	900	1960	12	10	5095	737.5	23.56	23.46	-0.10
2A-12A-66A	2	5	19175	1907.5	1175	1987.5	QPSK	1	12	12	10	5095	737.5	66	20	66786	2145	23.89	23.99	0.10
2A-12A-66A	12	5	23095	707.5	5095	737.5	QPSK	1	12	2	20	900	1960	66	20	66786	2145	24.69	24.77	0.08
2A-12A-66A	66	15	132597	1772.5	67061	2172.5	QPSK	1	0	2	20	900	1960	12	10	5095	737.5	24.38	24.41	0.03
2A-13A-66A	2	5	19175	1907.5	1175	1987.5	QPSK	1	12	13	10	5230	751	66	20	66786	2145	23.89	24.01	0.12
2A-13A-66A	13	10	23230	782	5230	751	QPSK	1	0	2	20	900	1960	66	20	66786	2145	24.49	24.69	0.20
2A-13A-66A	66	15	132597	1772.5	67061	2172.5	QPSK	1	0	2	20	900	1960	13	10	5230	751	24.38	24.53	0.15
2A-14A-30A	2	5	19175	1907.5	1175	1987.5	QPSK	1	12	14	10	5330	763	30	10	9820	2355	23.89	23.96	0.07
2A-14A-30A	14	10	23330	793	5330	763	QPSK	1	0	2	20	900	1960	30	10	9820	2355	24.35	24.42	0.07
2A-14A-30A	30	5	27710	2310	9820	2355	QPSK	1	12	2	20	900	1960	14	10	5330	763	23.56	23.67	0.11
2A-14A-66A	2	5	19175	1907.5	1175	1987.5	QPSK	1	12	14	10	5330	763	66	20	66786	2145	23.89	23.96	0.07
2A-14A-66A	14	10	23330	793	5330	763	QPSK	1	0	2	20	900	1960	66	20	66786	2145	24.35	24.31	-0.04
2A-14A-66A	66	15	132597	1772.5	67061	2172.5	QPSK	1	0	2	20	900	1960	14	10	5330	763	24.38	24.47	0.09
2A-29A-30A	2	5	19175	1907.5	1175	1987.5	QPSK	1	12	29	10	9715	722.5	30	10	9820	2355	23.89	24.02	0.13
2A-29A-30A	30	5	27710	2310	9820	2355	QPSK	1	12	2	20	900	1960	29	10	9715	722.5	23.56	23.66	0.10
2A-29A-66A	2	5	19175	1907.5	1175	1987.5	QPSK	1	12	29	10	9715	722.5	66	20	66786	2145	23.89	23.93	0.04
2A-29A-66A	66	15	132597	1772.5	67061	2172.5	QPSK	1	0	2	20	900	1960	29	10	9715	722.5	24.38	24.52	0.14
2A-30A-66A	2	5	19175	1907.5	1175	1987.5	QPSK	1	12	30	10	9820	2355	66	20	66786	2145	23.89	23.99	0.10
2A-30A-66A	30	5	27710	2310	9820	2355	QPSK	1	12	2	20	900	1960	66	20	66786	2145	23.56	23.66	0.10
2A-30A-66A	66	15	132597	1772.5	67061	2172.5	QPSK	1	0	2	20	900	1960	30	10	9820	2355	24.38	24.41	0.03
2A-66A-66A	2	5	19175	1907.5	1175	1987.5	QPSK	1	12	66	20	66786	2145	66	20	67236	2190	23.89	24.00	0.11
2A-66A-66A	66	15	132597	1772.5	67061	2172.5	QPSK	1	0	66	20	67236	2190	2	20	900	1960	24.38	24.26	-0.12
2A-66B	2	5	19175	1907.5	1175	1987.5	QPSK	1	12	66	15	66786	2145	66	5	66879	2154.3	23.89	23.94	0.05
2A-66B	66	15	132597	1772.5	67061	2172.5	QPSK	1	0	66	5	66968	2163.2	2	20	900	1960	24.38	24.47	0.09
2A-66C	2	5	19175	1907.5	1175	1987.5	QPSK	1	12	66	20	66786	2145	66	20	66984	2164.8	23.89	23.97	0.08
2A-66C	66	15	132597	1772.5	67061	2172.5	QPSK	1	0	66	20	66890	2155.4	2	20	900	1960	24.38	24.22	-0.16
2A-66A-71A	2	5	19175	1907.5	1175	1987.5	QPSK	1	12	66	20	66786	2145	71	20	68786	637	23.89	23.99	0.10
2A-66A-71A	66	15	132597	1772.5	67061	2172.5	QPSK	1	0	2	20	900	1960	71	20	68786	637	24.38	24.48	0.10
2A-66A-71A	71	5	133147	665.5	68611	619.5	QPSK	1	24	2	20	900	1960	66	20	66786	2145	25.02	24.85	-0.17
4A-4A-5A	4	5	20375	1752.5	2375	2152.5	QPSK	1	12	4	20	2050	2120	5	10	2525	881.5	23.91	23.83	-0.08
4A-4A-5A	5	5	20425	826.5	2425	871.5	QPSK	1	12	4	20	2175	2132.5	4	10	2350	2150	24.52	24.66	0.14
4A-4A-7A	4	5	20375	1752.5	2375	2152.5	QPSK	1	12	4	20	2050	2120	7	20	3100	2655	23.91	24.07	0.16
4A-4A-7A	7	5	20775	2502.5	2775	2622.5	QPSK	1	12	4	20	2175	2132.5	4	10	2350	2150	22.8	22.79	-0.01
4A-4A-12A	4	5	20375	1752.5	2375	2152.5	QPSK	1	12	4	20	2050	2120	12	10	5095	737.5	23.91	23.84	-0.07
4A-4A-12A	12	5	23095	707.5	5095	737.5	QPSK	1	12	4	20	2175	2132.5	4	10	2350	2150	24.69	24.71	0.02
4A-4A-13A	4	5	20375	1752.5	2375	2152.5	QPSK	1	12	4	20	2050	2120	13	10	5230	751	23.91	23.89	-0.02
4A-4A-13A	13	10	23230	782	5230	751	QPSK	1	0	4	20	2175	2132.5	4	10	2350	2150	24.49	24.58	0.09
4A-4A-29A	4	5	20375	1752.5	2375	2152.5	QPSK	1	12	4	20	2050	2120	29	10	9715	722.5	23.91	23.84	-0.07
4A-4A-71A	4	5	20375	1752.5	2375	2152.5	QPSK	1	12	4	20	2050	2120	71	20	68786	637	23.91	23.81	-0.10
4A-4A-71A	71	5	133147	665.5	68611	619.5	QPSK	1	24	4	20	2175	2132.5	4	10	2350	2150	25.02	24.84	-0.18
4A-5B	4	5	20375	1752.5	2375	2152.5	QPSK	1	12	5	10	2525	881.5	5	5	2453	874.3	23.91	23.83	-0.08
4A-5B	5	5	20425	826.5	2425	871.5	QPSK	1	12	5	10	2497	878.7	4	20	2175	2132.5	24.52	24.61	0.09

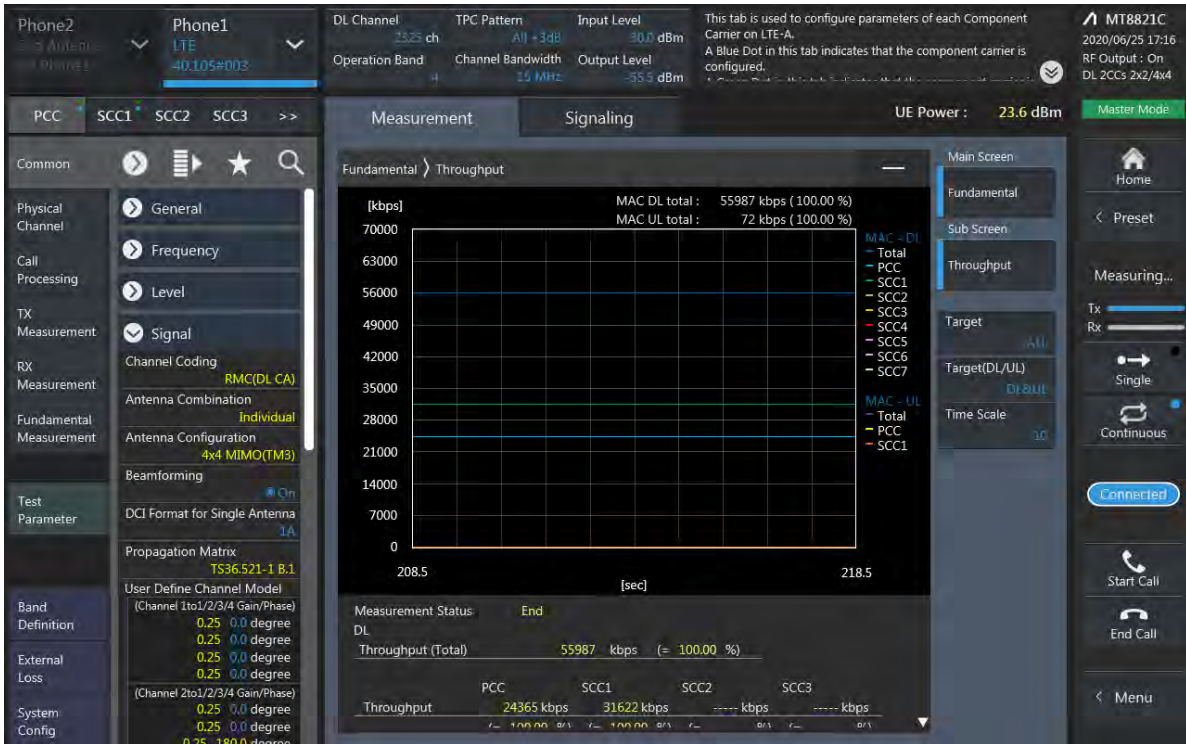


4A-5A-30A	4	5	20375	1752.5	2375	2152.5	QPSK	1	12	5	10	2525	881.5	30	10	9820	2355	23.91	24.03	0.12
4A-5A-30A	5	5	20425	826.5	2425	871.5	QPSK	1	12	4	20	2175	2132.5	30	10	9820	2355	24.52	24.53	0.01
4A-5A-30A	30	5	27710	2310	9820	2355	QPSK	1	12	4	20	2175	2132.5	5	10	2525	881.5	23.56	23.70	0.14
4A-7A-7A	4	5	20375	1752.5	2375	2152.5	QPSK	1	12	7	20	3100	2655	7	20	3350	2680	23.91	24.01	0.10
4A-7A-7A	7	5	20775	2502.5	2775	2622.5	QPSK	1	12	7	20	3350	2680	4	20	2175	2132.5	22.8	22.79	-0.01
4A-7C	4	5	20375	1752.5	2375	2152.5	QPSK	1	12	7	20	3100	2655	7	20	3298	2674.8	23.91	23.99	0.08
4A-7C	7	20	20850	2510	2850	2630	QPSK	1	99	7	20	3048	2649.8	4	20	2175	2132.5	22.63	22.77	0.14
4A-7A-12A	4	5	20375	1752.5	2375	2152.5	QPSK	1	12	7	20	3100	2655	12	10	5095	737.5	23.91	24.10	0.19
4A-7A-12A	7	5	20775	2502.5	2775	2622.5	QPSK	1	12	4	20	2175	2132.5	12	10	5095	737.5	22.8	22.81	0.01
4A-12B	4	5	20375	1752.5	2375	2152.5	QPSK	1	12	12	5	5095	737.5	12	5	5047	732.7	23.91	23.82	-0.09
4A-12B	12	5	23095	707.5	5095	737.5	QPSK	1	12	12	5	5047	732.7	4	20	2175	2132.5	24.69	24.81	0.12
4A-12A-30A	4	5	20375	1752.5	2375	2152.5	QPSK	1	12	12	10	5095	737.5	30	10	9820	2355	23.91	24.01	0.10
4A-12A-30A	30	5	27710	2310	9820	2355	QPSK	1	12	4	20	2175	2132.5	12	10	5095	737.5	23.56	23.61	0.05
4A-29A-30A	4	5	20375	1752.5	2375	2152.5	QPSK	1	12	29	10	9715	722.5	30	10	9820	2355	23.91	23.97	0.06
4A-29A-30A	30	5	27710	2310	9820	2355	QPSK	1	12	4	20	2175	2132.5	29	10	9715	722.5	23.56	23.68	0.12
5B-30A	5	5	20425	826.5	2425	871.5	QPSK	1	12	5	10	2497	878.7	30	10	9820	2355	24.52	24.62	0.10
5B-30A	30	5	27710	2310	9820	2355	QPSK	1	12	5	10	2525	881.5	5	5	2453	874.3	23.56	23.61	0.05
5A-5A-66A	5	5	20425	826.5	2425	871.5	QPSK	1	12	5	10	2600	889	66	20	66786	2145	24.52	24.61	0.09
5A-5A-66A	66	15	132597	1772.5	67061	2172.5	QPSK	1	0	5	5	2525	881.5	5	5	2425	871.5	24.38	24.53	0.15
5B-66A	5	5	20425	826.5	2425	871.5	QPSK	1	12	5	10	2497	878.7	66	20	66786	2145	24.52	24.62	0.10
5B-66A	66	15	132597	1772.5	67061	2172.5	QPSK	1	0	5	10	2525	881.5	5	5	2453	874.3	24.38	24.48	0.10
5A-7A-7A	5	5	20425	826.5	2425	871.5	QPSK	1	12	7	20	3100	2655	7	20	3350	2680	24.52	24.61	0.09
5A-7A-7A	7	5	20775	2502.5	2775	2622.5	QPSK	1	12	7	20	3350	2680	2	20	900	1960	22.8	22.73	-0.07
5A-30A-66A	5	5	20425	826.5	2425	871.5	QPSK	1	12	30	10	9820	2355	66	20	66786	2145	24.52	24.64	0.12
5A-30A-66A	30	5	27710	2310	9820	2355	QPSK	1	12	5	10	2525	881.5	66	20	66786	2145	23.56	23.61	0.05
5A-30A-66A	66	15	132597	1772.5	67061	2172.5	QPSK	1	0	5	10	2525	881.5	30	10	9820	2355	24.38	24.52	0.14
5A-66A-66A	5	5	20425	826.5	2425	871.5	QPSK	1	12	66	20	66786	2145	66	20	67236	2190	24.52	24.67	0.15
5A-66A-66A	66	15	132597	1772.5	67061	2172.5	QPSK	1	0	66	20	67236	2190	5	10	2525	881.5	24.38	24.56	0.18
5A-66B	5	5	20425	826.5	2425	871.5	QPSK	1	12	66	15	66786	2145	66	5	66879	2154.3	24.52	24.66	0.14
5A-66B	66	15	132597	1772.5	67061	2172.5	QPSK	1	0	66	5	66968	2163.2	5	10	2525	881.5	24.38	24.43	0.05
5A-66C	5	5	20425	826.5	2425	871.5	QPSK	1	12	66	20	66786	2145	66	20	66984	2164.8	24.52	24.65	0.13
5A-66C	66	15	132597	1772.5	67061	2172.5	QPSK	1	0	66	20	66890	2155.4	5	10	2525	881.5	24.38	24.45	0.07
7A-12B	7	5	20775	2502.5	2775	2622.5	QPSK	1	12	12	5	5095	737.5	12	5	5047	732.7	22.8	22.80	0.00
7A-12B	12	5	23095	707.5	5095	737.5	QPSK	1	12	12	5	5047	732.7	7	20	3100	2655	24.69	24.68	-0.01
7A-12A-66A	7	5	20775	2502.5	2775	2622.5	QPSK	1	12	12	10	5095	737.5	66	20	66786	2145	22.8	22.75	-0.05
7A-12A-66A	66	15	132597	1772.5	67061	2172.5	QPSK	1	0	7	20	3100	2655	12	10	5095	737.5	24.38	24.44	0.06
7A-66A-66A	7	5	20775	2502.5	2775	2622.5	QPSK	1	12	66	20	66786	2145	66	20	67236	2190	22.8	22.82	0.02
7A-66A-66A	66	15	132597	1772.5	67061	2172.5	QPSK	1	0	66	20	67236	2190	7	20	3100	2655	24.38	24.25	-0.13

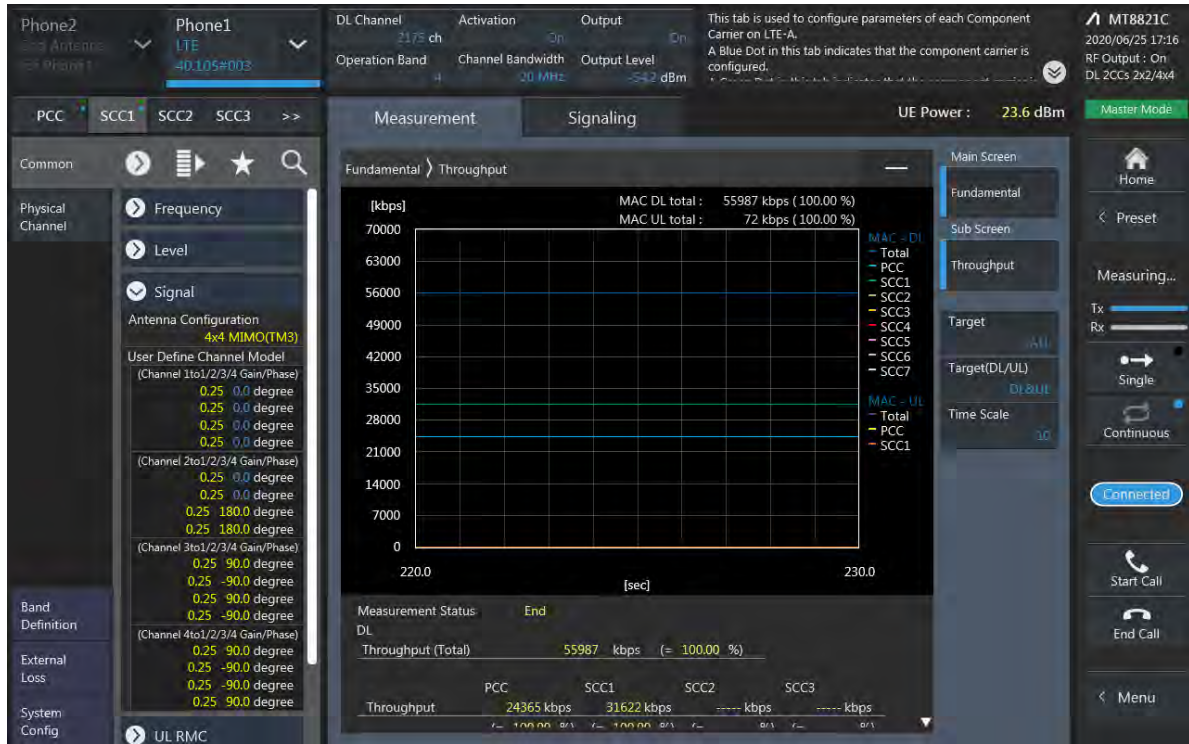
12B-66A	12	5	23095	707.5	5095	737.5	QPSK	1	12	12	5	5047	732.7	66	20	66786	2145	24.69	24.80	0.11
12B-66A	66	15	132597	1772.5	67061	2172.5	QPSK	1	0	12	5	5095	737.5	12	5	5047	732.7	24.38	24.54	0.16
12A-30A-66A	12	5	23095	707.5	5095	737.5	QPSK	1	12	30	10	9820	2355	66	20	66786	2145	24.69	24.73	0.04
12A-30A-66A	30	5	27710	2310	9820	2355	QPSK	1	12	12	10	5095	737.5	66	20	66786	2145	23.56	23.65	0.09
12A-30A-66A	66	15	132597	1772.5	67061	2172.5	QPSK	1	0	12	10	5095	737.5	30	10	9820	2355	24.38	24.19	-0.19
12A-66A-66A	12	5	23095	707.5	5095	737.5	QPSK	1	12	66	20	66786	2145	66	20	67236	2190	24.69	24.70	0.01
12A-66A-66A	66	15	132597	1772.5	67061	2172.5	QPSK	1	0	66	20	67236	2190	12	10	5095	737.5	24.38	24.50	0.12
12A-66C	12	5	23095	707.5	5095	737.5	QPSK	1	12	66	20	66786	2145	66	20	66984	2164.8	24.69	24.72	0.03
12A-66C	66	15	132597	1772.5	67061	2172.5	QPSK	1	0	66	20	66890	2155.4	12	10	5095	737.5	24.38	24.51	0.13
13A-66A-66A	13	10	23230	782	5230	751	QPSK	1	0	66	20	66786	2145	66	20	67236	2190	24.49	24.64	0.15
13A-66A-66A	66	15	132597	1772.5	67061	2172.5	QPSK	1	0	66	20	67236	2190	13	10	5230	751	24.38	24.49	0.11
13A-66B	13	10	23230	782	5230	751	QPSK	1	0	66	15	66786	2145	66	5	66879	2154.3	24.49	24.64	0.15
13A-66B	66	15	132597	1772.5	67061	2172.5	QPSK	1	0	66	5	66968	2163.2	5	10	2525	881.5	24.38	24.52	0.14
13A-66C	13	10	23230	782	5230	751	QPSK	1	0	66	20	66786	2145	66	20	66984	2164.8	24.49	24.61	0.12
13A-66C	66	15	132597	1772.5	67061	2172.5	QPSK	1	0	66	20	66890	2155.4	13	10	5230	751	24.38	24.42	0.04
14A-30A-66A	14	10	23330	793	5330	763	QPSK	1	0	30	10	9820	2355	66	20	66786	2145	24.35	24.46	0.11
14A-30A-66A	30	5	27710	2310	9820	2355	QPSK	1	12	14	10	5330	763	66	20	66786	2145	23.56	23.62	0.06
14A-30A-66A	66	15	132597	1772.5	67061	2172.5	QPSK	1	0	14	10	5330	763	30	10	9820	2355	24.38	24.15	-0.23
14A-66A-66A	14	10	23330	793	5330	763	QPSK	1	0	66	20	66786	2145	66	20	67236	2190	24.35	24.50	0.15
14A-66A-66A	66	15	132597	1772.5	67061	2172.5	QPSK	1	0	66	20	67236	2190	14	10	5330	763	24.38	24.47	0.09
25A-25A-26A	25	10	26640	1910	8640	1990	QPSK	1	0	25	20	8140	1940	26	5	8865	876.5	23.98	23.96	-0.02
25A-25A-26A	26	5	26715	816.5	8715	861.5	QPSK	1	12	25	20	8365	1962.5	25	20	8590	1985	24.53	24.61	0.08
25A-25A-41A	25	10	26640	1910	8640	1990	QPSK	1	0	25	20	8140	1940	41	20	40620	2593	23.98	24.01	0.03
25A-41C	25	10	26640	1910	8640	1990	QPSK	1	0	41	20	40620	2593	41	20	40422	2573.2	23.98	24.07	0.09
26A-41C	26	5	26715	816.5	8715	861.5	QPSK	1	12	41	20	40620	2593	41	20	40422	2573.2	24.53	24.56	0.03
29A-30A-66A	30	5	27710	2310	9820	2355	QPSK	1	12	29	10	9715	722.5	66	20	66786	2145	23.56	23.64	0.08
29A-30A-66A	66	15	132597	1772.5	67061	2172.5	QPSK	1	0	29	10	9715	722.5	30	10	9820	2355	24.38	24.15	-0.23
30A-66A-66A	30	5	27710	2310	9820	2355	QPSK	1	12	66	20	66786	2145	66	20	67236	2190	23.56	23.68	0.12
30A-66A-66A	66	15	132597	1772.5	67061	2172.5	QPSK	1	0	30	10	9820	2355	66	20	67236	2190	24.38	24.44	0.06
41A-41C PC3	41	15	39725	2503.5	39725	2503.5	QPSK	1	0	41	20	41292	2660.2	41	20	41490	2680	23.65	23.61	-0.04
41A-41C PC2	41	20	40185	2549.5	40185	2549.5	QPSK	1	49	41	20	41292	2660.2	41	20	41490	2680	25.93	25.93	0.00
41D PC3	41	15	39725	2503.5	39725	2503.5	QPSK	1	0	41	20	39896	2520.6	41	20	40094	2540.4	23.65	23.66	0.01
41D PC2	41	20	40185	2549.5	40185	2549.5	QPSK	1	49	41	20	40383	2569.3	41	20	40581	2589.1	25.93	25.94	0.01
66A-66C	66	15	132597	1772.5	67061	2172.5	QPSK	1	0	66	20	66734	2139.8	66	20	66536	2120	24.38	24.43	0.05
66A-66C	66	15	132597	1772.5	67061	2172.5	QPSK	1	0	66	20	66890	2155.4	66	20	67236	2190	24.38	24.48	0.10
66A-66A-71A	66	15	132597	1772.5	67061	2172.5	QPSK	1	0	66	20	67236	2190	71	20	68786	637	24.38	24.48	0.10
66A-66A-71A	71	5	133147	665.5	68611	619.5	QPSK	1	24	66	20	66786	2145	66	20	67236	2190	25.02	24.80	-0.22
66C-71A	66	15	132597	1772.5	67061	2172.5	QPSK	1	0	66	20	66890	2155.4	71	20	68786	637	24.38	24.47	0.09
66C-71A	71	5	133147	665.5	68611	619.5	QPSK	1	24	66	20	66786	2145	66	20	66984	2164.8	25.02	24.89	-0.13

## LTE Down Link 2CA 4x4 MIMO Call Setup

### PCC Setting : Channel/ RB/ BW/ Modulation



### SCC Setting : Channel/ RB/ BW/ Modulation and call Connection





LTE Downlink 2CA 4X4 MIMO Maximum Conducted Power

Combination (MAX)	PCC									SCC				Tx Power		Deviation
	Band	BW	PCC UL Channel	PCC UL Frequency	PCC DL Channel	PCC DL Frequency	Modulation	RB	offset	Band	BW	SCC DL Channel	SCC DL Frequency	LTE Single Carrier Tx Power (dBm)	LTE Tx Power with DL CA Enabled (dBm)	
[2C]	2	5	19175	1907.5	1175	1987.5	QPSK	1	12	2	20	1058	1975.8	23.89	23.84	-0.05
[2A]-2A	2	5	19175	1907.5	1175	1987.5	QPSK	1	12	2	20	700	1940	23.89	23.88	-0.01
2A-[2A]	2	5	19175	1907.5	1175	1987.5	QPSK	1	12	2	20	700	1940	23.89	23.84	-0.05
[2A]-[2A]	2	5	19175	1907.5	1175	1987.5	QPSK	1	12	2	20	700	1940	23.89	23.81	-0.08
[2A]-4A(0)	2	3	19185	1908.5	1185	1988.5	QPSK	1	0	4	20	2175	2132.5	23.88	23.87	-0.01
2A-[4A](0)	2	3	19185	1908.5	1185	1988.5	QPSK	1	0	4	20	2175	2132.5	23.88	23.8	-0.08
[2A]-[4A](0)	2	3	19185	1908.5	1185	1988.5	QPSK	1	0	4	20	2175	2132.5	23.88	23.84	-0.04
[2A]-4A(1)	2	5	19175	1907.5	1175	1987.5	QPSK	1	12	4	10	2175	2132.5	23.89	23.9	0.01
2A-[4A](1)	2	5	19175	1907.5	1175	1987.5	QPSK	1	12	4	10	2175	2132.5	23.89	23.93	0.04
[2A]-[4A](1)	2	5	19175	1907.5	1175	1987.5	QPSK	1	12	4	10	2175	2132.5	23.89	23.95	0.06
[2A]-4A(2)	2	5	19175	1907.5	1175	1987.5	QPSK	1	12	4	20	2175	2132.5	23.89	23.88	-0.01
2A-[4A](2)	2	5	19175	1907.5	1175	1987.5	QPSK	1	12	4	20	2175	2132.5	23.89	23.94	0.05
[2A]-[4A](2)	2	5	19175	1907.5	1175	1987.5	QPSK	1	12	4	20	2175	2132.5	23.89	23.97	0.08
[2A]-4A(0,2)	4	5	20375	1752.5	2375	2152.5	QPSK	1	12	2	20	900	1960	23.91	23.88	-0.03
2A-[4A](0,2)	4	5	20375	1752.5	2375	2152.5	QPSK	1	12	2	20	900	1960	23.91	23.97	0.06
[2A]-[4A](0,2)	4	5	20375	1752.5	2375	2152.5	QPSK	1	12	2	20	900	1960	23.91	23.93	0.02
[2A]-4A(1)	4	5	20375	1752.5	2375	2152.5	QPSK	1	12	2	10	900	1960	23.91	23.94	0.03
2A-[4A](1)	4	5	20375	1752.5	2375	2152.5	QPSK	1	12	2	10	900	1960	23.91	23.91	0.00
[2A]-[4A](1)	4	5	20375	1752.5	2375	2152.5	QPSK	1	12	2	10	900	1960	23.91	24	0.09
[2A]-5A(0,1)	2	5	19175	1907.5	1175	1987.5	QPSK	1	12	5	10	2525	881.5	23.89	23.9	0.01
[2A]-5A(0)	5	5	20425	826.5	2425	871.5	QPSK	1	12	2	20	900	1960	24.52	24.57	0.05
[2A]-5A(1)	5	5	20425	826.5	2425	871.5	QPSK	1	12	2	10	900	1960	24.52	24.62	0.10
[2A]-7A	2	5	19175	1907.5	1175	1987.5	QPSK	1	12	7	20	3100	2655	23.89	23.84	-0.05
[2A]-7A	7	5	20775	2502.5	2775	2622.5	QPSK	1	12	2	20	900	1960	22.8	22.91	0.11
[2A]-12A(0,1,2)	2	5	19175	1907.5	1175	1987.5	QPSK	1	12	12	10	5095	737.5	23.89	23.9	0.01
[2A]-12A(0)	12	5	23095	707.5	5095	737.5	QPSK	1	12	2	20	900	1960	24.69	24.65	-0.04
[2A]-12A(1)	12	3	23025	700.5	5025	730.5	QPSK	1	7	2	20	900	1960	24.75	24.74	-0.01
[2A]-12A(2)	12	5	23095	707.5	5095	737.5	QPSK	1	12	2	10	900	1960	24.69	24.66	-0.03
[2A]-13A(0,1)	2	5	19175	1907.5	1175	1987.5	QPSK	1	12	13	10	5230	751	23.89	23.81	-0.08
[2A]-13A(0)	13	10	23230	782	5230	751	QPSK	1	0	2	20	900	1960	24.49	24.54	0.05
[2A]-13A(1)	13	10	23230	782	5230	751	QPSK	1	0	2	10	900	1960	24.49	24.54	0.05
[2A]-14A	2	5	19175	1907.5	1175	1987.5	QPSK	1	12	14	10	5330	763	23.89	23.79	-0.10
[2A]-14A	14	10	23330	793	5330	763	QPSK	1	0	2	20	900	1960	24.35	24.33	-0.02
[2A]-29A	2	5	19175	1907.5	1175	1987.5	QPSK	1	12	29	10	9715	722.5	23.89	23.88	-0.01
[2A]-30A	2	5	19175	1907.5	1175	1987.5	QPSK	1	12	30	10	9820	2355	23.89	23.85	-0.04
[2A]-30A	30	5	27710	2310	9820	2355	QPSK	1	12	2	20	900	1960	23.56	23.64	0.08

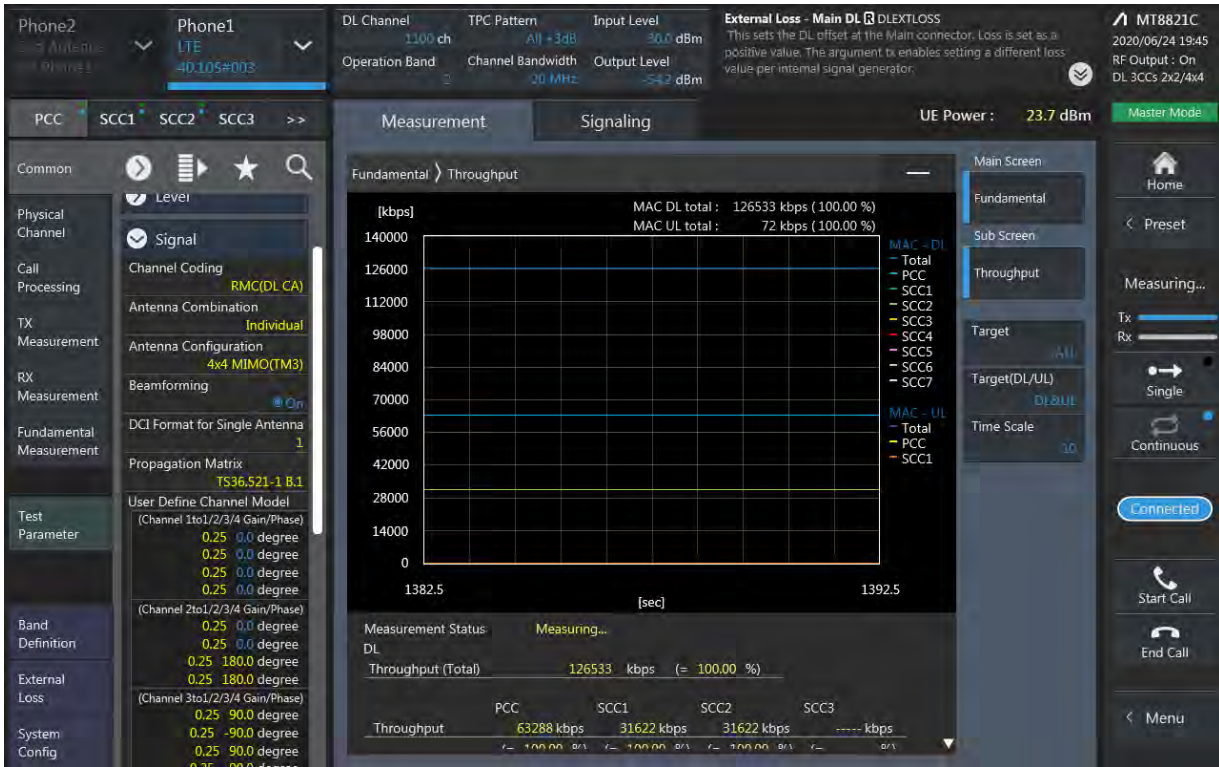
Combination (MAX)	PCC									SCC				Tx Power		Deviation
	Band	BW	PCC UL Channel	PCC UL Frequency	PCC DL Channel	PCC DL Frequency	Modulation	RB	offset	Band	BW	SCC DL Channel	SCC DL Frequency	LTE Single Carrier Tx Power (dBm)	LTE Tx Power with DL CA Enabled(dBm)	
[2A]-66A(0)	2	3	19185	1908.5	1185	1988.5	QPSK	1	0	66	20	66786	2145	23.88	23.85	-0.03
2A-[66A](0)	2	3	19185	1908.5	1185	1988.5	QPSK	1	0	66	20	66786	2145	23.88	23.94	0.06
[2A]-[66A](0)	2	3	19185	1908.5	1185	1988.5	QPSK	1	0	66	20	66786	2145	23.88	23.81	-0.07
[2A]-66A(1)	2	5	19175	1907.5	1175	1987.5	QPSK	1	12	66	10	66786	2145	23.89	23.88	-0.01
2A-[66A](1)	2	5	19175	1907.5	1175	1987.5	QPSK	1	12	66	10	66786	2145	23.89	23.87	-0.02
[2A]-[66A](1)	2	5	19175	1907.5	1175	1987.5	QPSK	1	12	66	10	66786	2145	23.89	23.94	0.05
[2A]-66A(2)	2	5	19175	1907.5	1175	1987.5	QPSK	1	12	66	20	66786	2145	23.89	23.92	0.03
2A-[66A](2)	2	5	19175	1907.5	1175	1987.5	QPSK	1	12	66	20	66786	2145	23.89	23.95	0.06
[2A]-[66A](2)	2	5	19175	1907.5	1175	1987.5	QPSK	1	12	66	20	66786	2145	23.89	23.97	0.08
[2A]-66A(0,2)	66	15	132597	1772.5	67061	2172.5	QPSK	1	0	2	20	900	1960	24.38	24.4	0.02
2A-[66A](0,2)	66	15	132597	1772.5	67061	2172.5	QPSK	1	0	2	20	900	1960	24.38	24.41	0.03
[2A]-[66A](0,2)	66	15	132597	1772.5	67061	2172.5	QPSK	1	0	2	20	900	1960	24.38	24.35	-0.03
[2A]-66A(1)	66	5	132647	1777.5	67111	2177.5	QPSK	1	12	2	10	900	1960	24.28	24.31	0.03
2A-[66A](1)	66	5	132647	1777.5	67111	2177.5	QPSK	1	12	2	10	900	1960	24.28	24.27	-0.01
[2A]-[66A](1)	66	5	132647	1777.5	67111	2177.5	QPSK	1	12	2	10	900	1960	24.28	24.3	0.02
[2A]-71A(0)	2	5	19175	1907.5	1175	1987.5	QPSK	1	12	71	20	68786	637	23.89	23.95	0.06
[2A]-71A(1)	2	5	19175	1907.5	1175	1987.5	QPSK	1	12	71	10	68786	637	23.89	23.95	0.06
[2A]-71A(0)	71	5	133147	665.5	68611	619.5	QPSK	1	24	2	20	900	1960	25.02	25.05	0.03
[2A]-71A(1)	71	5	133147	665.5	68611	619.5	QPSK	1	24	2	10	900	1960	25.02	24.99	-0.03
[4A]-4A(0)	4	5	20375	1752.5	2375	2152.5	QPSK	1	12	4	20	2050	2120	23.91	23.88	-0.03
4A-[4A](0)	4	5	20375	1752.5	2375	2152.5	QPSK	1	12	4	20	2050	2120	23.91	24.01	0.10
[4A]-[4A](0)	4	5	20375	1752.5	2375	2152.5	QPSK	1	12	4	20	2050	2120	23.91	23.99	0.08
[4A]-4A(1)	4	5	20375	1752.5	2375	2152.5	QPSK	1	12	4	10	2000	2115	23.91	23.95	0.04
4A-[4A](1)	4	5	20375	1752.5	2375	2152.5	QPSK	1	12	4	10	2000	2115	23.91	23.97	0.06
[4A]-[4A](1)	4	5	20375	1752.5	2375	2152.5	QPSK	1	12	4	10	2000	2115	23.91	23.94	0.03
[4A]-5A(0,1)	4	5	20375	1752.5	2375	2152.5	QPSK	1	12	5	10	2525	881.5	23.91	23.92	0.01
[4A]-5A(0)	5	5	20425	826.5	2425	871.5	QPSK	1	12	4	10	2175	2132.5	24.52	24.55	0.03
[4A]-5A(1)	5	5	20425	826.5	2425	871.5	QPSK	1	12	4	20	2175	2132.5	24.52	24.5	-0.02
[4A]-7A(0,1)	4	5	20375	1752.5	2375	2152.5	QPSK	1	12	7	20	3100	2655	23.91	23.79	-0.12
[4A]-7A(0)	7	5	20775	2502.5	2775	2622.5	QPSK	1	12	4	10	2175	2132.5	22.8	22.97	0.17
[4A]-7A(1)	7	5	20775	2502.5	2775	2622.5	QPSK	1	12	4	20	2175	2132.5	22.8	22.95	0.15
[4A]-12A(0,1,2,3,4)	4	5	20375	1752.5	2375	2152.5	QPSK	1	12	12	10	5095	737.5	23.91	23.85	-0.06
[4A]-12A(5)	4	5	20375	1752.5	2375	2152.5	QPSK	1	12	12	5	5095	737.5	23.91	23.96	0.05
[4A]-12A(0,3)	12	5	23095	707.5	5095	737.5	QPSK	1	12	4	10	2175	2132.5	24.69	24.71	0.02
[4A]-12A(1,4)	12	5	23095	707.5	5095	737.5	QPSK	1	12	4	20	2175	2132.5	24.69	24.66	-0.03
[4A]-12A(2)	12	3	23025	700.5	5025	730.5	QPSK	1	7	4	20	2175	2132.5	24.75	24.71	-0.04

Combination (MAX)	PCC									SCC				Tx Power		Deviation
	Band	BW	PCC UL Channel	PCC UL Frequency	PCC DL Channel	PCC DL Frequency	Modulation	RB	offset	Band	BW	SCC DL Channel	SCC DL Frequency	Carrier Tx Power (dBm)	LTE Tx Power with DL CA Enabled (dBm)	
[4A]-12A(5)	12	5	23095	707.5	5095	737.5	QPSK	1	12	4	15	2175	2133	24.69	24.73	0.04
[4A]-13A(0,1)	4	5	20375	1753	2375	2153	QPSK	1	12	13	10	5230	751	23.91	23.84	-0.07
[4A]-13A(0)	13	10	23230	782	5230	751	QPSK	1	0	4	20	2175	2133	24.49	24.54	0.05
[4A]-13A(1)	13	10	23230	782	5230	751	QPSK	1	0	4	10	2175	2133	24.49	24.35	-0.14
[4A]-29A	4	5	20375	1753	2375	2153	QPSK	1	12	29	10	9715	722.5	23.91	23.85	-0.06
[4A]-71A	4	5	20375	1753	2375	2153	QPSK	1	12	71	20	68786	637	23.91	23.88	-0.03
[4A]-71A	71	5	133147	665.5	68611	619.5	QPSK	1	24	4	20	2175	2133	25.02	24.95	-0.07
5A-[66A]	5	5	20425	826.5	2425	871.5	QPSK	1	12	66	20	66786	2145	24.52	24.53	0.01
5A-[66A]	66	15	132597	1773	67061	2173	QPSK	1	0	5	10	2525	881.5	24.38	24.44	0.06
7A-[66A]	7	5	20775	2503	2775	2623	QPSK	1	12	66	20	66786	2145	22.8	22.89	0.09
7A-[66A]	66	15	132597	1773	67061	2173	QPSK	1	0	7	20	3100	2655	24.38	24.41	0.03
12A-[66A](0,3)	12	5	23095	707.5	5095	737.5	QPSK	1	12	66	10	66786	2145	24.69	24.72	0.03
12A-[66A](1,4)	12	5	23095	707.5	5095	737.5	QPSK	1	12	66	20	66786	2145	24.69	24.84	0.15
12A-[66A](2)	12	3	23025	700.5	5025	730.5	QPSK	1	7	66	20	66786	2145	24.75	24.81	0.06
12A-[66A](5)	12	5	23095	707.5	5095	737.5	QPSK	1	12	66	15	66786	2145	24.69	24.76	0.07
12A-[66A](1,2,4)	66	15	132597	1773	67061	2173	QPSK	1	0	12	10	5095	737.5	24.38	24.47	0.09
12A-[66A](0,3)	66	5	132647	1778	67111	2178	QPSK	1	12	12	10	5095	737.5	24.28	24.33	0.05
12A-[66A](5)	66	15	132597	1773	67061	2173	QPSK	1	0	12	5	5095	737.5	24.38	24.36	-0.02
13A-[66A]	13	10	23230	782	5230	751	QPSK	1	0	66	20	66786	2145	24.49	24.33	-0.16
13A-[66A]	66	15	132597	1773	67061	2173	QPSK	1	0	13	10	5230	751	24.38	24.38	0.00
14A-[66A]	14	10	23330	793	5330	763	QPSK	1	0	66	20	66786	2145	24.35	24.37	0.02
14A-[66A]	66	15	132597	1773	67061	2173	QPSK	1	0	14	10	5330	763	24.38	24.5	0.12
[25A]-25A(0)	25	10	26640	1910	8640	1990	QPSK	1	0	25	10	8090	1935	23.98	24.01	0.03
25A-[25A]0)	25	10	26640	1910	8640	1990	QPSK	1	0	25	10	8090	1935	23.98	24.04	0.06
[25A]-[25A](0)	25	10	26640	1910	8640	1990	QPSK	1	0	25	10	8090	1935	23.98	23.98	0.00
[25A]-25A(1)	25	10	26640	1910	8640	1990	QPSK	1	0	25	20	8140	1940	23.98	23.94	-0.04
25A-[25A](1)	25	10	26640	1910	8640	1990	QPSK	1	0	25	20	8140	1940	23.98	24.01	0.03
[25A]-[25A](1)	25	10	26640	1910	8640	1990	QPSK	1	0	25	20	8140	1940	23.98	24.03	0.05
[25A]-26A(0)	25	10	26640	1910	8640	1990	QPSK	1	0	26	15	8865	876.5	23.98	24.11	0.13
[25A]-26A(1,2)	25	10	26640	1910	8640	1990	QPSK	1	0	26	10	8865	876.5	23.98	23.92	-0.06
[25A]-26A(0)	26	3	26705	815.5	8705	860.5	QPSK	1	14	25	20	8365	1963	24.54	24.52	-0.02
[25A]-26A(1)	26	3	26705	815.5	8705	860.5	QPSK	1	14	25	10	8365	1963	24.54	24.56	0.02
[25A]-26A(2)	26	5	26715	816.5	8715	861.5	QPSK	1	12	25	10	8365	1963	24.53	24.59	0.06
[25A]-41A	25	10	26640	1910	8640	1990	QPSK	1	0	41	20	40620	2593	23.98	23.95	-0.03
29A-[66A]	66	15	132597	1773	67061	2173	QPSK	1	0	29	10	9715	722.5	24.38	24.47	0.09
30A-[66A]	66	15	132597	1773	67061	2173	QPSK	1	0	30	10	9820	2355	24.38	24.4	0.02
[66A]-66A	66	15	132597	1773	67061	2173	QPSK	1	0	66	20	67236	2190	24.38	24.45	0.07
66A-[66A]	66	15	132597	1773	67061	2173	QPSK	1	0	66	20	67236	2190	24.38	24.41	0.03
[66A]-[66A]	66	15	132597	1773	67061	2173	QPSK	1	0	66	20	67236	2190	24.38	24.43	0.05
[66B]	66	15	132597	1773	67061	2173	QPSK	1	0	66	5	66968	2163	24.38	24.39	0.01
[66C]	66	15	132597	1773	67061	2173	QPSK	1	0	66	20	66890	2155	24.38	24.51	0.13
[66A]-71A	66	15	132597	1773	67061	2173	QPSK	1	0	71	20	68786	637	24.38	24.48	0.10
[66A]-71A	71	5	133147	665.5	68611	619.5	QPSK	1	24	66	20	66786	2145	25.02	25.12	0.10



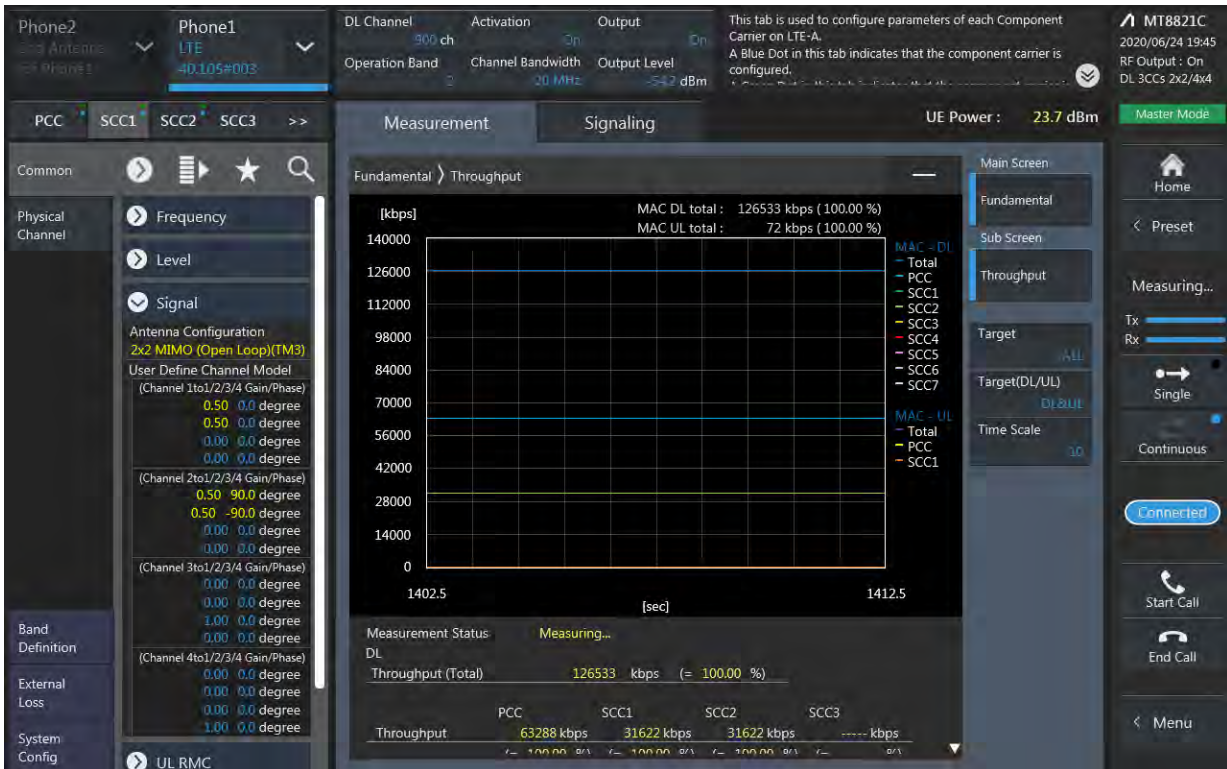
**LTE Down Link 3CA 4x4 MIMO Call Setup**

PCC Setting: Channel /RB/BW/Modulation

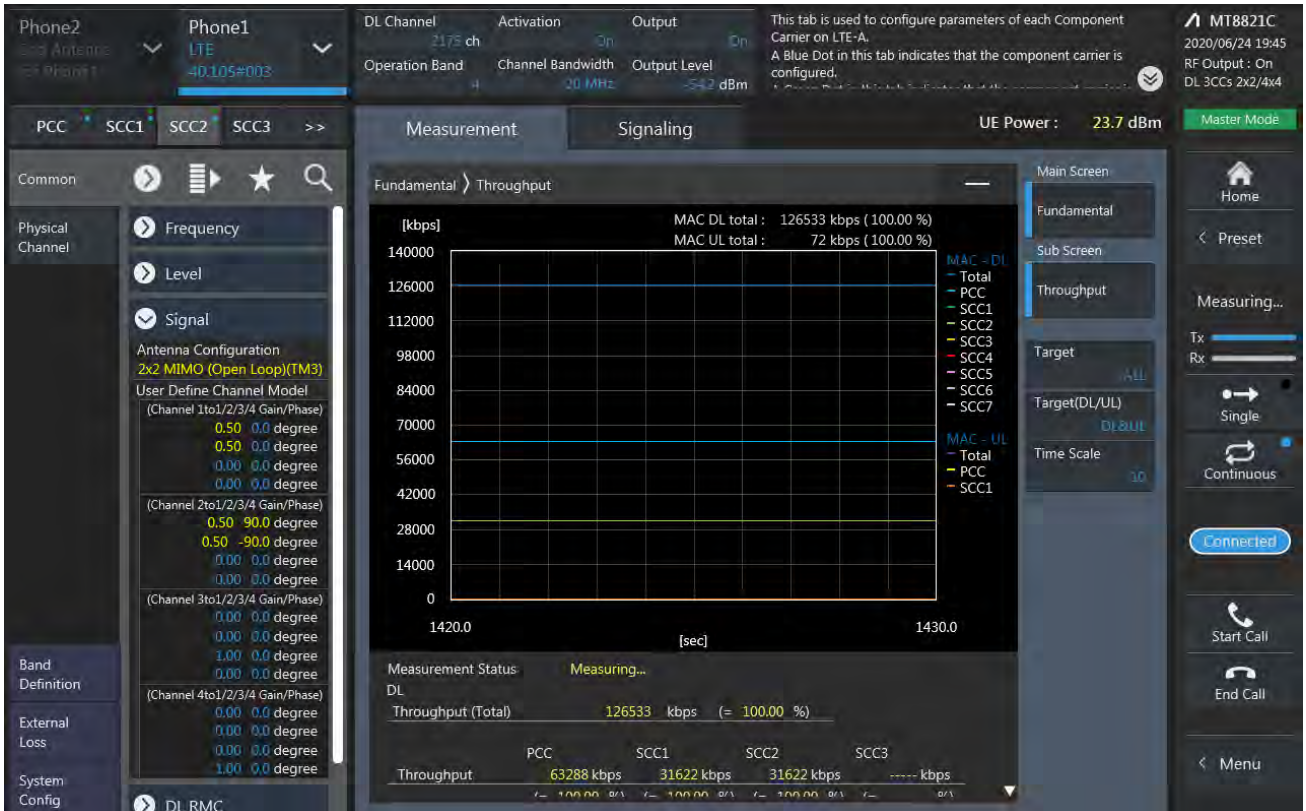


CC1 Setting : Channel /RB/BW/Modulation





SCC2 Setting (Channel /RB/BW/Modulation )and call Connection



LTE Downlink 3CA 4X4 MIMO Maximum Conducted Power

Combination	PCC									SCC				SCC				Tx Power		Deviation
	Band	BW	PCC UL Channel	PCC UL Frequency	PCC DL Channel	PCC DL Frequency	Modulation	RB	offset	Band	BW	SCC DL Channel	SCC DL Frequency	Band	BW	SCC DL Channel	SCC DL Frequency	LTE Single Carrier Tx Power (dBm)	LTE Tx Power with DL CA Enabled (dBm)	
[2A]-2A-4A	2	5	19175	1907.5	1175	1987.5	QPSK	1	12	2	20	700	1940	4	20	2175	2132.5	23.89	23.84	-0.05
2A-[2A]-4A	2	5	19175	1907.5	1175	1987.5	QPSK	1	12	2	20	700	1940	4	20	2175	2132.5	23.89	23.82	-0.07
2A-2A-[4A]	2	5	19175	1907.5	1175	1987.5	QPSK	1	12	2	20	700	1940	4	20	2175	2132.5	23.89	23.85	-0.04
[2A]-[2A]-4A	2	5	19175	1907.5	1175	1987.5	QPSK	1	12	2	20	700	1940	4	20	2175	2132.5	23.89	23.88	-0.01
[2A]-2A-[4A]	2	5	19175	1907.5	1175	1987.5	QPSK	1	12	2	20	700	1940	4	20	2175	2132.5	23.89	23.82	-0.07
2A-[2A]-[4A]	2	5	19175	1907.5	1175	1987.5	QPSK	1	12	2	20	700	1940	4	20	2175	2132.5	23.89	23.86	-0.03
[2A]-[2A]-[4A]	2	5	19175	1907.5	1175	1987.5	QPSK	1	12	2	20	700	1940	4	20	2175	2132.5	23.89	23.85	-0.04
[2A]-2A-4A	4	5	20375	1752.5	2375	2152.5	QPSK	1	12	2	20	900	1960	2	20	1100	1980	23.91	23.92	0.01
2A-[2A]-4A	4	5	20375	1752.5	2375	2152.5	QPSK	1	12	2	20	900	1960	2	20	1100	1980	23.91	23.87	-0.04
2A-2A-[4A]	4	5	20375	1752.5	2375	2152.5	QPSK	1	12	2	20	900	1960	2	20	1100	1980	23.91	23.85	-0.06
[2A]-[2A]-4A	4	5	20375	1752.5	2375	2152.5	QPSK	1	12	2	20	900	1960	2	20	1100	1980	23.91	23.84	-0.07
[2A]-2A-[4A]	4	5	20375	1752.5	2375	2152.5	QPSK	1	12	2	20	900	1960	2	20	1100	1980	23.91	23.84	-0.07
2A-[2A]-[4A]	4	5	20375	1752.5	2375	2152.5	QPSK	1	12	2	20	900	1960	2	20	1100	1980	23.91	23.93	0.02
[2A]-[2A]-[4A]	4	5	20375	1752.5	2375	2152.5	QPSK	1	12	2	20	900	1960	2	20	1100	1980	23.91	23.97	0.06
[2A]-2A-5A	2	5	19175	1907.5	1175	1987.5	QPSK	1	12	2	20	700	1940	5	10	2525	881.5	23.89	23.86	-0.03
2A-[2A]-5A	2	5	19175	1907.5	1175	1987.5	QPSK	1	12	2	20	700	1940	5	10	2525	881.5	23.89	23.84	-0.05
[2A]-[2A]-5A	2	5	19175	1907.5	1175	1987.5	QPSK	1	12	2	20	700	1940	5	10	2525	881.5	23.89	23.88	-0.01
[2A]-2A-5A	5	5	20425	826.5	2425	871.5	QPSK	1	12	2	20	900	1960	2	20	1100	1980	24.52	24.50	-0.02
2A-[2A]-5A	5	5	20425	826.5	2425	871.5	QPSK	1	12	2	20	900	1960	2	20	1100	1980	24.52	24.49	-0.03
[2A]-[2A]-5A	5	5	20425	826.5	2425	871.5	QPSK	1	12	2	20	900	1960	2	20	1100	1980	24.52	24.55	0.03
[2A]-2A-12A	2	5	19175	1907.5	1175	1987.5	QPSK	1	12	2	20	700	1940	12	10	5095	737.5	23.89	23.85	-0.04
2A-[2A]-12A	2	5	19175	1907.5	1175	1987.5	QPSK	1	12	2	20	700	1940	12	10	5095	737.5	23.89	23.84	-0.05
[2A]-[2A]-12A	2	5	19175	1907.5	1175	1987.5	QPSK	1	12	2	20	700	1940	12	10	5095	737.5	23.89	23.85	-0.04
[2A]-2A-12A	12	5	23095	707.5	5095	737.5	QPSK	1	12	2	20	900	1960	2	20	1100	1980	24.69	24.59	-0.10
2A-[2A]-12A	12	5	23095	707.5	5095	737.5	QPSK	1	12	2	20	900	1960	2	20	1100	1980	24.69	24.67	-0.02
[2A]-[2A]-12A	12	5	23095	707.5	5095	737.5	QPSK	1	12	2	20	900	1960	2	20	1100	1980	24.69	24.71	0.02
[2A]-2A-13A	2	5	19175	1907.5	1175	1987.5	QPSK	1	12	2	20	700	1940	13	10	5230	751	23.89	23.85	-0.04
2A-[2A]-13A	2	5	19175	1907.5	1175	1987.5	QPSK	1	12	2	20	700	1940	13	10	5230	751	23.89	23.84	-0.05
[2A]-[2A]-13A	2	5	19175	1907.5	1175	1987.5	QPSK	1	12	2	20	700	1940	13	10	5230	751	23.89	23.86	-0.03
[2A]-2A-13A	13	10	23230	782	5230	751	QPSK	1	0	2	20	900	1960	2	20	1100	1980	24.49	24.45	-0.04
2A-[2A]-13A	13	10	23230	782	5230	751	QPSK	1	0	2	20	900	1960	2	20	1100	1980	24.49	24.51	0.02
[2A]-[2A]-13A	13	10	23230	782	5230	751	QPSK	1	0	2	20	900	1960	2	20	1100	1980	24.49	24.50	0.01
[2A]-2A-14A	2	5	19175	1907.5	1175	1987.5	QPSK	1	12	2	20	700	1940	14	10	5330	763	23.89	23.88	-0.01
2A-[2A]-14A	2	5	19175	1907.5	1175	1987.5	QPSK	1	12	2	20	700	1940	14	10	5330	763	23.89	23.85	-0.04

Combination	PCC									SCC				SCC				Tx Power		Deviation
	Band	BW	PCC UL Channel	PCC UL Frequency	PCC DL Channel	PCC DL Frequency	Modulation	RB	offset	Band	BW	SCC DL Channel	SCC DL Frequency	Band	BW	SCC DL Channel	SCC DL Frequency	LTE Single Carrier Tx Power (dBm)	LTE Tx Power with DL CA Enabled(dBm)	
[2A]-[2A]-14A	2	5	19175	1907.5	1175	1987.5	QPSK	1	12	2	20	700	1940	14	10	5330	763	23.89	23.88	-0.01
[2A]-2A-14A	14	10	23330	793	5330	763	QPSK	1	0	2	20	900	1960	2	20	1100	1980	24.35	24.31	-0.04
2A-[2A]-14A	14	10	23330	793	5330	763	QPSK	1	0	2	20	900	1960	2	20	1100	1980	24.35	24.36	0.01
[2A]-[2A]-14A	14	10	23330	793	5330	763	QPSK	1	0	2	20	900	1960	2	20	1100	1980	24.35	24.40	0.05
[2A]-2A-29A	2	5	19175	1907.5	1175	1987.5	QPSK	1	12	2	20	700	1940	29	10	9715	722.5	23.89	23.85	-0.04
2A-[2A]-29A	2	5	19175	1907.5	1175	1987.5	QPSK	1	12	2	20	700	1940	29	10	9715	722.5	23.89	23.84	-0.05
[2A]-[2A]-29A	2	5	19175	1907.5	1175	1987.5	QPSK	1	12	2	20	700	1940	29	10	9715	722.5	23.89	23.86	-0.03
[2A]-2A-66A	2	5	19175	1907.5	1175	1987.5	QPSK	1	12	2	20	700	1940	66	20	66786	2145	23.89	23.87	-0.02
2A-[2A]-66A	2	5	19175	1907.5	1175	1987.5	QPSK	1	12	2	20	700	1940	66	20	66786	2145	23.89	23.89	0.00
2A-2A-[66A]	2	5	19175	1907.5	1175	1987.5	QPSK	1	12	2	20	700	1940	66	20	66786	2145	23.89	23.85	-0.04
[2A]-[2A]-66A	2	5	19175	1907.5	1175	1987.5	QPSK	1	12	2	20	700	1940	66	20	66786	2145	23.89	23.82	-0.07
[2A]-2A-[66A]	2	5	19175	1907.5	1175	1987.5	QPSK	1	12	2	20	700	1940	66	20	66786	2145	23.89	23.84	-0.05
2A-[2A]-[66A]	2	5	19175	1907.5	1175	1987.5	QPSK	1	12	2	20	700	1940	66	20	66786	2145	23.89	23.88	-0.01
[2A]-[2A]-[66A]	2	5	19175	1907.5	1175	1987.5	QPSK	1	12	2	20	700	1940	66	20	66786	2145	23.89	23.81	-0.08
[2A]-2A-66A	66	15	132597	1772.5	67061	2172.5	QPSK	1	0	2	20	900	1960	2	20	1100	1980	24.38	24.42	0.04
2A-[2A]-66A	66	15	132597	1772.5	67061	2172.5	QPSK	1	0	2	20	900	1960	2	20	1100	1980	24.38	24.38	0.00
2A-2A-[66A]	66	15	132597	1772.5	67061	2172.5	QPSK	1	0	2	20	900	1960	2	20	1100	1980	24.38	24.35	-0.03
[2A]-[2A]-66A	66	15	132597	1772.5	67061	2172.5	QPSK	1	0	2	20	900	1960	2	20	1100	1980	24.38	24.30	-0.08
[2A]-2A-[66A]	66	15	132597	1772.5	67061	2172.5	QPSK	1	0	2	20	900	1960	2	20	1100	1980	24.38	24.42	0.04
2A-[2A]-[66A]	66	15	132597	1772.5	67061	2172.5	QPSK	1	0	2	20	900	1960	2	20	1100	1980	24.38	24.46	0.08
[2A]-[2A]-[66A]	66	15	132597	1772.5	67061	2172.5	QPSK	1	0	2	20	900	1960	2	20	1100	1980	24.38	24.45	0.07
[2C]-66A	2	5	19175	1907.5	1175	1987.5	QPSK	1	12	2	20	1058	1975.8	66	20	66786	2145	23.89	23.88	-0.01
2C-[66A]	2	5	19175	1907.5	1175	1987.5	QPSK	1	12	2	20	1058	1975.8	66	20	66786	2145	23.89	23.85	-0.04
[2C]-[66A]	2	5	19175	1907.5	1175	1987.5	QPSK	1	12	2	20	1058	1975.8	66	20	66786	2145	23.89	23.89	0.00
[2C]-66A	66	15	132597	1772.5	67061	2172.5	QPSK	1	0	2	20	900	1960	2	20	1098	1979.8	24.38	24.40	0.02
2C-[66A]	66	15	132597	1772.5	67061	2172.5	QPSK	1	0	2	20	900	1960	2	20	1098	1979.8	24.38	24.35	-0.03
[2C]-[66A]	66	15	132597	1772.5	67061	2172.5	QPSK	1	0	2	20	900	1960	2	20	1098	1979.8	24.38	24.36	-0.02
[2C]-[66A]	66	15	132597	1772.5	67061	2172.5	QPSK	1	0	2	20	900	1960	2	20	1098	1979.8	24.38	24.42	0.04
[2A]-2A-71A	2	5	19175	1907.5	1175	1987.5	QPSK	1	12	2	20	700	1940	71	20	68786	637	23.89	23.85	-0.04
2A-[2A]-71A	2	5	19175	1907.5	1175	1987.5	QPSK	1	12	2	20	700	1940	71	20	68786	637	23.89	23.86	-0.03
[2A]-[2A]-71A	2	5	19175	1907.5	1175	1987.5	QPSK	1	12	2	20	700	1940	71	20	68786	637	23.89	23.87	-0.02
[2A]-2A-71A	71	5	133147	665.5	68611	619.5	QPSK	1	24	2	20	900	1960	2	20	1100	1980	25.02	24.97	-0.05
2A-[2A]-71A	71	5	133147	665.5	68611	619.5	QPSK	1	24	2	20	900	1960	2	20	1100	1980	25.02	25.05	0.03
[2A]-[2A]-71A	71	5	133147	665.5	68611	619.5	QPSK	1	24	2	20	900	1960	2	20	1100	1980	25.02	25.07	0.05
[2A]-4A-4A	2	5	19175	1907.5	1175	1987.5	QPSK	1	12	4	20	2175	2132.5	4	10	2350	2150	23.89	23.84	-0.05



Combination	PCC									SCC				SCC				Tx Power		Deviation
	Band	BW	PCC UL Channel	PCC UL Frequency	PCC DL Channel	PCC DL Frequency	Modulation	RB	offset	Band	BW	SCC DL Channel	SCC DL Frequency	Band	BW	SCC DL Channel	SCC DL Frequency	LTE Single Carrier Tx Power (dBm)	LTE Tx Power with DL CA Enabled(dBm)	
2A-[4A]-4A	2	5	19175	1907.5	1175	1987.5	QPSK	1	12	4	20	2175	2132.5	4	10	2350	2150	23.89	23.85	-0.04
2A-4A-[4A]	2	5	19175	1907.5	1175	1987.5	QPSK	1	12	4	20	2175	2132.5	4	10	2350	2150	23.89	23.81	-0.08
[2A]-[4A]-4A	2	5	19175	1907.5	1175	1987.5	QPSK	1	12	4	20	2175	2132.5	4	10	2350	2150	23.89	23.86	-0.03
[2A]-4A-[4A]	2	5	19175	1907.5	1175	1987.5	QPSK	1	12	4	20	2175	2132.5	4	10	2350	2150	23.89	23.87	-0.02
2A-[4A]-[4A]	2	5	19175	1907.5	1175	1987.5	QPSK	1	12	4	20	2175	2132.5	4	10	2350	2150	23.89	23.89	0.00
[2A]-[4A]-[4A]	2	5	19175	1907.5	1175	1987.5	QPSK	1	12	4	20	2175	2132.5	4	10	2350	2150	23.89	23.91	0.02
[2A]-4A-4A	4	5	20375	1752.5	2375	2152.5	QPSK	1	12	4	20	2050	2120	2	20	900	1960	23.91	23.99	0.08
2A-[4A]-4A	4	5	20375	1752.5	2375	2152.5	QPSK	1	12	4	20	2050	2120	2	20	900	1960	23.91	23.94	0.03
2A-4A-[4A]	4	5	20375	1752.5	2375	2152.5	QPSK	1	12	4	20	2050	2120	2	20	900	1960	23.91	23.95	0.04
[2A]-[4A]-4A	4	5	20375	1752.5	2375	2152.5	QPSK	1	12	4	20	2050	2120	2	20	900	1960	23.91	23.88	-0.03
[2A]-4A-[4A]	4	5	20375	1752.5	2375	2152.5	QPSK	1	12	4	20	2050	2120	2	20	900	1960	23.91	23.96	0.05
2A-[4A]-[4A]	4	5	20375	1752.5	2375	2152.5	QPSK	1	12	4	20	2050	2120	2	20	900	1960	23.91	23.97	0.06
[2A]-[4A]-[4A]	4	5	20375	1752.5	2375	2152.5	QPSK	1	12	4	20	2050	2120	2	20	900	1960	23.91	23.89	-0.02
[2A]-4A-5A	2	5	19175	1907.5	1175	1987.5	QPSK	1	12	4	20	2175	2132.5	5	10	2525	881.5	23.89	23.92	0.03
2A-[4A]-5A	2	5	19175	1907.5	1175	1987.5	QPSK	1	12	4	20	2175	2132.5	5	10	2525	881.5	23.89	23.88	-0.01
[2A]-[4A]-5A	2	5	19175	1907.5	1175	1987.5	QPSK	1	12	4	20	2175	2132.5	5	10	2525	881.5	23.89	23.86	-0.03
[2A]-4A-5A	4	5	20375	1752.5	2375	2152.5	QPSK	1	12	2	20	900	1960	5	10	2525	881.5	23.91	24.00	0.09
2A-[4A]-5A	4	5	20375	1752.5	2375	2152.5	QPSK	1	12	2	20	900	1960	5	10	2525	881.5	23.91	23.98	0.07
[2A]-[4A]-5A	4	5	20375	1752.5	2375	2152.5	QPSK	1	12	2	20	900	1960	5	10	2525	881.5	23.91	23.94	0.03
[2A]-4A-5A	5	5	20425	826.5	2425	871.5	QPSK	1	12	2	20	900	1960	4	20	2175	2132.5	24.52	24.56	0.04
2A-[4A]-5A	5	5	20425	826.5	2425	871.5	QPSK	1	12	2	20	900	1960	4	20	2175	2132.5	24.52	24.50	-0.02
[2A]-[4A]-5A	5	5	20425	826.5	2425	871.5	QPSK	1	12	2	20	900	1960	4	20	2175	2132.5	24.52	24.51	-0.01
[2A]-4A-12A	2	5	19175	1907.5	1175	1987.5	QPSK	1	12	4	20	2175	2132.5	12	10	5095	737.5	23.89	23.82	-0.07
2A-[4A]-12A	2	5	19175	1907.5	1175	1987.5	QPSK	1	12	4	20	2175	2132.5	12	10	5095	737.5	23.89	23.87	-0.02
[2A]-[4A]-12A	2	5	19175	1907.5	1175	1987.5	QPSK	1	12	4	20	2175	2132.5	12	10	5095	737.5	23.89	23.90	0.01
[2A]-4A-12A	4	5	20375	1752.5	2375	2152.5	QPSK	1	12	2	20	900	1960	12	10	5095	737.5	23.91	23.94	0.03
2A-[4A]-12A	4	5	20375	1752.5	2375	2152.5	QPSK	1	12	2	20	900	1960	12	10	5095	737.5	23.91	23.90	-0.01
[2A]-[4A]-12A	4	5	20375	1752.5	2375	2152.5	QPSK	1	12	2	20	900	1960	12	10	5095	737.5	23.91	23.88	-0.03
[2A]-4A-12A	12	5	23095	707.5	5095	737.5	QPSK	1	12	2	20	900	1960	4	20	2175	2132.5	24.69	24.71	0.02
2A-[4A]-12A	12	5	23095	707.5	5095	737.5	QPSK	1	12	2	20	900	1960	4	20	2175	2132.5	24.69	24.65	-0.04
[2A]-[4A]-12A	12	5	23095	707.5	5095	737.5	QPSK	1	12	2	20	900	1960	4	20	2175	2132.5	24.69	24.78	0.09
[2A]-4A-13A	2	5	19175	1907.5	1175	1987.5	QPSK	1	12	4	20	2175	2132.5	13	10	5230	751	23.89	23.84	-0.05
2A-[4A]-13A	2	5	19175	1907.5	1175	1987.5	QPSK	1	12	4	20	2175	2132.5	13	10	5230	751	23.89	23.89	0.00
[2A]-[4A]-13A	2	5	19175	1907.5	1175	1987.5	QPSK	1	12	4	20	2175	2132.5	13	10	5230	751	23.89	23.95	0.06
[2A]-4A-13A	4	5	20375	1752.5	2375	2152.5	QPSK	1	12	2	20	900	1960	13	10	5230	751	23.91	23.89	-0.02
2A-[4A]-13A	4	5	20375	1752.5	2375	2152.5	QPSK	1	12	2	20	900	1960	13	10	5230	751	23.91	23.85	-0.06

Combination	PCC									SCC				SCC				Tx Power		Deviation
	Band	BW	PCC UL Channel	PCC UL Frequency	PCC DL Channel	PCC DL Frequency	Modulation	RB	offset	Band	BW	SCC DL Channel	SCC DL Frequency	Band	BW	SCC DL Channel	SCC DL Frequency	LTE Single Carrier Tx Power (dBm)	LTE Tx Power with DL CA Enabled (dBm)	
[2A]-[4A]-13A	4	5	20375	1752.5	2375	2152.5	QPSK	1	12	2	20	900	1960	13	10	5230	751	23.91	23.97	0.06
[2A]-4A-13A	13	10	23230	782	5230	751	QPSK	1	0	2	20	900	1960	4	20	2175	2132.5	24.49	24.46	-0.03
2A-[4A]-13A	13	10	23230	782	5230	751	QPSK	1	0	2	20	900	1960	4	20	2175	2132.5	24.49	24.52	0.03
[2A]-[4A]-13A	13	10	23230	782	5230	751	QPSK	1	0	2	20	900	1960	4	20	2175	2132.5	24.49	24.50	0.01
[2A]-4A-29A	2	5	19175	1907.5	1175	1987.5	QPSK	1	12	4	20	2175	2132.5	29	10	9715	722.5	23.89	23.84	-0.05
2A-[4A]-29A	2	5	19175	1907.5	1175	1987.5	QPSK	1	12	4	20	2175	2132.5	29	10	9715	722.5	23.89	23.90	0.01
[2A]-4A-29A	4	5	20375	1752.5	2375	2152.5	QPSK	1	12	2	20	900	1960	29	10	9715	722.5	23.91	23.94	0.03
2A-[4A]-29A	4	5	20375	1752.5	2375	2152.5	QPSK	1	12	2	20	900	1960	29	10	9715	722.5	23.91	24.00	0.09
[2A]-4A-71A	2	5	19175	1907.5	1175	1987.5	QPSK	1	12	4	20	2175	2132.5	71	20	68786	637	23.89	23.81	-0.08
2A-[4A]-71A	2	5	19175	1907.5	1175	1987.5	QPSK	1	12	4	20	2175	2132.5	71	20	68786	637	23.89	23.90	0.01
[2A]-[4A]-71A	2	5	19175	1907.5	1175	1987.5	QPSK	1	12	4	20	2175	2132.5	71	20	68786	637	23.89	23.88	-0.01
[2A]-4A-71A	4	5	20375	1752.5	2375	2152.5	QPSK	1	12	2	20	900	1960	71	20	68786	637	23.91	23.89	-0.02
2A-[4A]-71A	4	5	20375	1752.5	2375	2152.5	QPSK	1	12	2	20	900	1960	71	20	68786	637	23.91	23.93	0.02
[2A]-[4A]-71A	4	5	20375	1752.5	2375	2152.5	QPSK	1	12	2	20	900	1960	71	20	68786	637	23.91	23.97	0.06
[2A]-4A-71A	71	5	133147	665.5	68611	619.5	QPSK	1	24	2	20	900	1960	4	20	2175	2132.5	25.02	25.01	-0.01
2A-[4A]-71A	71	5	133147	665.5	68611	619.5	QPSK	1	24	2	20	900	1960	4	20	2175	2132.5	25.02	24.98	-0.04
[2A]-[4A]-71A	71	5	133147	665.5	68611	619.5	QPSK	1	24	2	20	900	1960	4	20	2175	2132.5	25.02	24.97	-0.05
[2A]-5B	2	5	19175	1907.5	1175	1987.5	QPSK	1	12	5	10	2525	881.5	5	5	2453	874.3	23.89	23.87	-0.02
[2A]-5B	5	5	20425	826.5	2425	871.5	QPSK	1	12	5	10	2497	878.7	2	20	900	1960	24.52	24.54	0.02
[2A]-5A-66A	2	5	19175	1907.5	1175	1987.5	QPSK	1	12	5	10	2525	881.5	66	20	66786	2145	23.89	23.88	-0.01
2A-5A-[66A]	2	5	19175	1907.5	1175	1987.5	QPSK	1	12	5	10	2525	881.5	66	20	66786	2145	23.89	23.92	0.03
[2A]-5A-[66A]	2	5	19175	1907.5	1175	1987.5	QPSK	1	12	5	10	2525	881.5	66	20	66786	2145	23.89	23.84	-0.05
[2A]-5A-66A	5	5	20425	826.5	2425	871.5	QPSK	1	12	2	20	900	1960	66	20	66786	2145	24.52	24.54	0.02
2A-5A-[66A]	5	5	20425	826.5	2425	871.5	QPSK	1	12	2	20	900	1960	66	20	66786	2145	24.52	24.60	0.08
[2A]-5A-[66A]	5	5	20425	826.5	2425	871.5	QPSK	1	12	2	20	900	1960	66	20	66786	2145	24.52	24.51	-0.01
[2A]-5A-66A	66	15	132597	1772.5	67061	2172.5	QPSK	1	0	2	20	900	1960	5	10	2525	881.5	24.38	24.32	-0.06
2A-5A-[66A]	66	15	132597	1772.5	67061	2172.5	QPSK	1	0	2	20	900	1960	5	10	2525	881.5	24.38	24.39	0.01
[2A]-5A-[66A]	66	15	132597	1772.5	67061	2172.5	QPSK	1	0	2	20	900	1960	5	10	2525	881.5	24.38	24.41	0.03
[2A]-12B	2	5	19175	1907.5	1175	1987.5	QPSK	1	12	12	5	5095	737.5	12	5	5047	732.7	23.89	23.84	-0.05
[2A]-12B	12	5	23095	707.5	5095	737.5	QPSK	1	12	12	5	5047	732.7	2	20	900	1960	24.69	24.68	-0.01
[2A]-12A-66A	2	5	19175	1907.5	1175	1987.5	QPSK	1	12	12	10	5095	737.5	66	20	66786	2145	23.89	23.86	-0.03
2A-12A-[66A]	2	5	19175	1907.5	1175	1987.5	QPSK	1	12	12	10	5095	737.5	66	20	66786	2145	23.89	23.91	0.02
[2A]-12A-[66A]	2	5	19175	1907.5	1175	1987.5	QPSK	1	12	12	10	5095	737.5	66	20	66786	2145	23.89	23.84	-0.05
[2A]-12A-66A	12	5	23095	707.5	5095	737.5	QPSK	1	12	2	20	900	1960	66	20	66786	2145	24.69	24.65	-0.04
2A-12A-[66A]	12	5	23095	707.5	5095	737.5	QPSK	1	12	2	20	900	1960	66	20	66786	2145	24.69	24.64	-0.05
[2A]-12A-[66A]	12	5	23095	707.5	5095	737.5	QPSK	1	12	2	20	900	1960	66	20	66786	2145	24.69	24.71	0.02

Combination	PCC									SCC				SCC				Tx Power		Deviation
	Band	BW	PCC UL Channel	PCC UL Frequency	PCC DL Channel	PCC DL Frequency	Modulation	RB	offset	Band	BW	SCC DL Channel	SCC DL Frequency	Band	BW	SCC DL Channel	SCC DL Frequency	LTE Single Carrier Tx Power (dBm)	LTE Tx Power with DL CA Enabled (dBm)	
[2A]-12A-66A	66	15	132597	1772.5	67061	2172.5	QPSK	1	0	2	20	900	1960	12	10	5095	737.5	24.38	24.40	0.02
2A-12A-[66A]	66	15	132597	1772.5	67061	2172.5	QPSK	1	0	2	20	900	1960	12	10	5095	737.5	24.38	24.41	0.03
[2A]-12A-[66A]	66	15	132597	1772.5	67061	2172.5	QPSK	1	0	2	20	900	1960	12	10	5095	737.5	24.38	24.37	-0.01
[2A]-13A-66A	2	5	19175	1907.5	1175	1987.5	QPSK	1	12	13	10	5230	751	66	20	66786	2145	23.89	23.88	-0.01
2A-13A-[66A]	2	5	19175	1907.5	1175	1987.5	QPSK	1	12	13	10	5230	751	66	20	66786	2145	23.89	23.91	0.02
[2A]-13A-[66A]	2	5	19175	1907.5	1175	1987.5	QPSK	1	12	13	10	5230	751	66	20	66786	2145	23.89	23.84	-0.05
[2A]-13A-66A	13	10	23230	782	5230	751	QPSK	1	0	2	20	900	1960	66	20	66786	2145	24.49	24.44	-0.05
2A-13A-[66A]	13	10	23230	782	5230	751	QPSK	1	0	2	20	900	1960	66	20	66786	2145	24.49	24.51	0.02
[2A]-13A-[66A]	13	10	23230	782	5230	751	QPSK	1	0	2	20	900	1960	66	20	66786	2145	24.49	24.55	0.06
[2A]-13A-66A	66	15	132597	1772.5	67061	2172.5	QPSK	1	0	2	20	900	1960	13	10	5230	751	24.38	24.39	0.01
2A-13A-[66A]	66	15	132597	1772.5	67061	2172.5	QPSK	1	0	2	20	900	1960	13	10	5230	751	24.38	24.42	0.04
[2A]-13A-[66A]	66	15	132597	1772.5	67061	2172.5	QPSK	1	0	2	20	900	1960	13	10	5230	751	24.38	24.40	0.02
[2A]-14A-66A	2	5	19175	1907.5	1175	1987.5	QPSK	1	12	14	10	5330	763	66	20	66786	2145	23.89	23.91	0.02
2A-14A-[66A]	2	5	19175	1907.5	1175	1987.5	QPSK	1	12	14	10	5330	763	66	20	66786	2145	23.89	23.90	0.01
[2A]-14A-[66A]	2	5	19175	1907.5	1175	1987.5	QPSK	1	12	14	10	5330	763	66	20	66786	2145	23.89	23.82	-0.07
[2A]-14A-66A	14	10	23330	793	5330	763	QPSK	1	0	2	20	900	1960	66	20	66786	2145	24.35	24.25	-0.10
2A-14A-[66A]	14	10	23330	793	5330	763	QPSK	1	0	2	20	900	1960	66	20	66786	2145	24.35	24.33	-0.02
[2A]-14A-[66A]	14	10	23330	793	5330	763	QPSK	1	0	2	20	900	1960	66	20	66786	2145	24.35	24.41	0.06
[2A]-14A-66A	66	15	132597	1772.5	67061	2172.5	QPSK	1	0	2	20	900	1960	14	10	5330	763	24.38	24.43	0.05
2A-14A-[66A]	66	15	132597	1772.5	67061	2172.5	QPSK	1	0	2	20	900	1960	14	10	5330	763	24.38	24.45	0.07
[2A]-14A-[66A]	66	15	132597	1772.5	67061	2172.5	QPSK	1	0	2	20	900	1960	14	10	5330	763	24.38	24.40	0.02
[2A]-29A-66A	2	5	19175	1907.5	1175	1987.5	QPSK	1	12	29	10	9715	722.5	66	20	66786	2145	23.89	23.90	0.01
2A-29A-[66A]	2	5	19175	1907.5	1175	1987.5	QPSK	1	12	29	10	9715	722.5	66	20	66786	2145	23.89	23.88	-0.01
[2A]-29A-[66A]	2	5	19175	1907.5	1175	1987.5	QPSK	1	12	29	10	9715	722.5	66	20	66786	2145	23.89	23.87	-0.02
[2A]-29A-66A	66	15	132597	1772.5	67061	2172.5	QPSK	1	0	2	20	900	1960	29	10	9715	722.5	24.38	24.41	0.03
2A-29A-[66A]	66	15	132597	1772.5	67061	2172.5	QPSK	1	0	2	20	900	1960	29	10	9715	722.5	24.38	24.35	-0.03
[2A]-29A-[66A]	66	15	132597	1772.5	67061	2172.5	QPSK	1	0	2	20	900	1960	29	10	9715	722.5	24.38	24.35	-0.03
[2A]-66A-66A	2	5	19175	1907.5	1175	1987.5	QPSK	1	12	66	20	66786	2145	66	20	67236	2190	23.89	23.87	-0.02
2A-[66A]-66A	2	5	19175	1907.5	1175	1987.5	QPSK	1	12	66	20	66786	2145	66	20	67236	2190	23.89	23.84	-0.05
2A-66A-[66A]	2	5	19175	1907.5	1175	1987.5	QPSK	1	12	66	20	66786	2145	66	20	67236	2190	23.89	23.90	0.01
[2A]-[66A]-66A	2	5	19175	1907.5	1175	1987.5	QPSK	1	12	66	20	66786	2145	66	20	67236	2190	23.89	23.88	-0.01
[2A]-66A-[66A]	2	5	19175	1907.5	1175	1987.5	QPSK	1	12	66	20	66786	2145	66	20	67236	2190	23.89	23.86	-0.03
2A-[66A]-[66A]	2	5	19175	1907.5	1175	1987.5	QPSK	1	12	66	20	66786	2145	66	20	67236	2190	23.89	23.86	-0.03
[2A]-[66A]-[66A]	2	5	19175	1907.5	1175	1987.5	QPSK	1	12	66	20	66786	2145	66	20	67236	2190	23.89	23.87	-0.02
[2A]-66A-66A	66	15	132597	1772.5	67061	2172.5	QPSK	1	0	66	20	67236	2190	2	20	900	1960	24.38	24.43	0.05
2A-[66A]-66A	66	15	132597	1772.5	67061	2172.5	QPSK	1	0	66	20	67236	2190	2	20	900	1960	24.38	24.47	0.09



Combination	PCC									SCC				SCC				Tx Power		Deviation
	Band	BW	PCC UL Channel	PCC UL Frequency	PCC DL Channel	PCC DL Frequency	Modulation	RB	offset	Band	BW	SCC DL Channel	SCC DL Frequency	Band	BW	SCC DL Channel	SCC DL Frequency	LTE Single Carrier Tx Power (dBm)	LTE Tx Power with DL CA Enabled(dBm)	
2A-66A-[66A]	66	15	132597	1772.5	67061	2172.5	QPSK	1	0	66	20	67236	2190	2	20	900	1960	24.38	24.30	-0.08
[2A]-[66A]-66A	66	15	132597	1772.5	67061	2172.5	QPSK	1	0	66	20	67236	2190	2	20	900	1960	24.38	24.35	-0.03
[2A]-66A-[66A]	66	15	132597	1772.5	67061	2172.5	QPSK	1	0	66	20	67236	2190	2	20	900	1960	24.38	24.38	0.00
2A-[66A]-[66A]	66	15	132597	1772.5	67061	2172.5	QPSK	1	0	66	20	67236	2190	2	20	900	1960	24.38	24.38	0.00
[2A]-[66A]-[66A]	66	15	132597	1772.5	67061	2172.5	QPSK	1	0	66	20	67236	2190	2	20	900	1960	24.38	24.40	0.02
[2A]-66B	2	5	19175	1907.5	1175	1987.5	QPSK	1	12	66	15	66786	2145	66	5	66879	2154.3	23.89	23.87	-0.02
2A-[66B]	2	5	19175	1907.5	1175	1987.5	QPSK	1	12	66	15	66786	2145	66	5	66879	2154.3	23.89	23.86	-0.03
[2A]-[66B]	2	5	19175	1907.5	1175	1987.5	QPSK	1	12	66	15	66786	2145	66	5	66879	2154.3	23.89	23.90	0.01
[2A]-66B	66	15	132597	1772.5	67061	2172.5	QPSK	1	0	66	5	66968	2163.2	2	20	900	1960	24.38	24.40	0.02
2A-[66B]	66	15	132597	1772.5	67061	2172.5	QPSK	1	0	66	5	66968	2163.2	2	20	900	1960	24.38	24.44	0.06
[2A]-[66B]	66	15	132597	1772.5	67061	2172.5	QPSK	1	0	66	5	66968	2163.2	2	20	900	1960	24.38	24.39	0.01
[2A]-66C	2	5	19175	1907.5	1175	1987.5	QPSK	1	12	66	20	66786	2145	66	20	66984	2164.8	23.89	23.88	-0.01
2A-[66C]	2	5	19175	1907.5	1175	1987.5	QPSK	1	12	66	20	66786	2145	66	20	66984	2164.8	23.89	23.80	-0.09
[2A]-[66C]	2	5	19175	1907.5	1175	1987.5	QPSK	1	12	66	20	66786	2145	66	20	66984	2164.8	23.89	23.91	0.02
[2A]-66C	66	15	132597	1772.5	67061	2172.5	QPSK	1	0	66	20	66890	2155.4	2	20	900	1960	24.38	24.41	0.03
2A-[66C]	66	15	132597	1772.5	67061	2172.5	QPSK	1	0	66	20	66890	2155.4	2	20	900	1960	24.38	24.45	0.07
[2A]-[66C]	66	15	132597	1772.5	67061	2172.5	QPSK	1	0	66	20	66890	2155.4	2	20	900	1960	24.38	24.40	0.02
[2A]-66A-71A	2	5	19175	1907.5	1175	1987.5	QPSK	1	12	66	20	66786	2145	71	20	68786	637	23.89	23.88	-0.01
2A-[66A]-71A	2	5	19175	1907.5	1175	1987.5	QPSK	1	12	66	20	66786	2145	71	20	68786	637	23.89	23.85	-0.04
[2A]-[66A]-71A	2	5	19175	1907.5	1175	1987.5	QPSK	1	12	66	20	66786	2145	71	20	68786	637	23.89	23.92	0.03
[2A]-66A-71A	66	15	132597	1772.5	67061	2172.5	QPSK	1	0	2	20	900	1960	71	20	68786	637	24.38	24.37	-0.01
2A-[66A]-71A	66	15	132597	1772.5	67061	2172.5	QPSK	1	0	2	20	900	1960	71	20	68786	637	24.38	24.39	0.01
[2A]-[66A]-71A	66	15	132597	1772.5	67061	2172.5	QPSK	1	0	2	20	900	1960	71	20	68786	637	24.38	24.40	0.02
[2A]-66A-71A	71	5	133147	665.5	68611	619.5	QPSK	1	24	2	20	900	1960	66	20	66786	2145	25.02	25.05	0.03
2A-[66A]-71A	71	5	133147	665.5	68611	619.5	QPSK	1	24	2	20	900	1960	66	20	66786	2145	25.02	25.01	-0.01
[2A]-[66A]-71A	71	5	133147	665.5	68611	619.5	QPSK	1	24	2	20	900	1960	66	20	66786	2145	25.02	25.00	-0.02
[4A]-4A-5A	4	5	20375	1752.5	2375	2152.5	QPSK	1	12	4	20	2050	2120	5	10	2525	881.5	23.91	23.93	0.02
4A-[4A]-5A	4	5	20375	1752.5	2375	2152.5	QPSK	1	12	4	20	2050	2120	5	10	2525	881.5	23.91	23.87	-0.04
[4A]-[4A]-5A	4	5	20375	1752.5	2375	2152.5	QPSK	1	12	4	20	2050	2120	5	10	2525	881.5	23.91	23.88	-0.03
[4A]-4A-5A	5	5	20425	826.5	2425	871.5	QPSK	1	12	4	20	2175	2132.5	4	10	2350	2150	24.52	24.48	-0.04
4A-[4A]-5A	5	5	20425	826.5	2425	871.5	QPSK	1	12	4	20	2175	2132.5	4	10	2350	2150	24.52	24.50	-0.02
[4A]-[4A]-5A	5	5	20425	826.5	2425	871.5	QPSK	1	12	4	20	2175	2132.5	4	10	2350	2150	24.52	24.53	0.01
[4A]-4A-12A	4	5	20375	1752.5	2375	2152.5	QPSK	1	12	4	20	2050	2120	12	10	5095	737.5	23.91	23.99	0.08
4A-[4A]-12A	4	5	20375	1752.5	2375	2152.5	QPSK	1	12	4	20	2050	2120	12	10	5095	737.5	23.91	24.01	0.10
[4A]-[4A]-12A	4	5	20375	1752.5	2375	2152.5	QPSK	1	12	4	20	2050	2120	12	10	5095	737.5	23.91	23.89	-0.02
[4A]-4A-12A	12	5	23095	707.5	5095	737.5	QPSK	1	12	4	20	2175	2132.5	4	10	2350	2150	24.69	24.68	-0.01
4A-[4A]-12A	12	5	23095	707.5	5095	737.5	QPSK	1	12	4	20	2175	2132.5	4	10	2350	2150	24.69	24.65	-0.04
[4A]-[4A]-12A	12	5	23095	707.5	5095	737.5	QPSK	1	12	4	20	2175	2132.5	4	10	2350	2150	24.69	24.72	0.03
[4A]-4A-13A	4	5	20375	1752.5	2375	2152.5	QPSK	1	12	4	20	2050	2120	13	10	5230	751	23.91	23.99	0.08

Combination	PCC									SCC				SCC				Tx Power		Deviation
	Band	BW	PCC UL Channel	PCC UL Frequency	PCC DL Channel	PCC DL Frequency	Modulation	RB	offset	Band	BW	SCC DL Channel	SCC DL Frequency	Band	BW	SCC DL Channel	SCC DL Frequency	LTE Single Carrier Tx Power (dBm)	LTE Tx Power with DL CA Enabled(dBm)	
4A-[4A]-13A	4	5	20375	1752.5	2375	2152.5	QPSK	1	12	4	20	2050	2120	13	10	5230	751	23.91	24.02	0.11
[4A]-[4A]-13A	4	5	20375	1752.5	2375	2152.5	QPSK	1	12	4	20	2050	2120	13	10	5230	751	23.91	23.87	-0.04
[4A]-4A-13A	13	10	23230	782	5230	751	QPSK	1	0	4	20	2175	2132.5	4	10	2350	2150	24.49	24.45	-0.04
4A-[4A]-13A	13	10	23230	782	5230	751	QPSK	1	0	4	20	2175	2132.5	4	10	2350	2150	24.49	24.47	-0.02
[4A]-[4A]-13A	13	10	23230	782	5230	751	QPSK	1	0	4	20	2175	2132.5	4	10	2350	2150	24.49	24.50	0.01
[4A]-4A-71A	4	5	20375	1752.5	2375	2152.5	QPSK	1	12	4	20	2050	2120	71	20	68786	637	23.91	23.95	0.04
4A-[4A]-71A	4	5	20375	1752.5	2375	2152.5	QPSK	1	12	4	20	2050	2120	71	20	68786	637	23.91	23.97	0.06
[4A]-[4A]-71A	4	5	20375	1752.5	2375	2152.5	QPSK	1	12	4	20	2050	2120	71	20	68786	637	23.91	23.88	-0.03
[4A]-4A-71A	71	5	133147	665.5	68611	619.5	QPSK	1	24	4	20	2175	2132.5	4	10	2350	2150	25.02	24.95	-0.07
4A-[4A]-71A	71	5	133147	665.5	68611	619.5	QPSK	1	24	4	20	2175	2132.5	4	10	2350	2150	25.02	25.01	-0.01
[4A]-[4A]-71A	71	5	133147	665.5	68611	619.5	QPSK	1	24	4	20	2175	2132.5	4	10	2350	2150	25.02	24.99	-0.03
[4A]-5B	4	5	20375	1752.5	2375	2152.5	QPSK	1	12	5	10	2525	881.5	5	5	2453	874.3	23.91	23.89	-0.02
[4A]-5B	5	5	20425	826.5	2425	871.5	QPSK	1	12	5	10	2497	878.7	4	20	2175	2132.5	24.52	24.58	0.06
[4A]-12B	4	5	20375	1752.5	2375	2152.5	QPSK	1	12	12	5	5095	737.5	12	5	5047	732.7	23.91	23.90	-0.01
[4A]-12B	12	5	23095	707.5	5095	737.5	QPSK	1	12	12	5	5047	732.7	4	20	2175	2132.5	24.69	24.64	-0.05
5A-5A-[66A]	5	5	20425	826.5	2425	871.5	QPSK	1	12	5	10	2600	889	66	20	66786	2145	24.52	24.49	-0.03
5A-5A-[66A]	66	15	132597	1772.5	67061	2172.5	QPSK	1	0	5	5	2525	881.5	5	5	2425	871.5	24.38	24.35	-0.03
5B-[66A]	5	5	20425	826.5	2425	871.5	QPSK	1	12	5	10	2497	878.7	66	20	66786	2145	24.52	24.53	0.01
5B-[66A]	66	15	132597	1772.5	67061	2172.5	QPSK	1	0	5	10	2525	881.5	5	5	2453	874.3	24.38	24.42	0.04
5A-[66A]-66A	5	5	20425	826.5	2425	871.5	QPSK	1	12	66	20	66786	2145	66	20	67236	2190	24.52	24.55	0.03
5A-66A-[66A]	5	5	20425	826.5	2425	871.5	QPSK	1	12	66	20	66786	2145	66	20	67236	2190	24.52	24.49	-0.03
5A-[66A]-[66A]	5	5	20425	826.5	2425	871.5	QPSK	1	12	66	20	66786	2145	66	20	67236	2190	24.52	24.43	-0.09
5A-[66A]-66A	66	15	132597	1772.5	67061	2172.5	QPSK	1	0	66	20	67236	2190	5	10	2525	881.5	24.38	24.41	0.03
5A-66A-[66A]	66	15	132597	1772.5	67061	2172.5	QPSK	1	0	66	20	67236	2190	5	10	2525	881.5	24.38	24.35	-0.03
5A-[66A]-[66A]	66	15	132597	1772.5	67061	2172.5	QPSK	1	0	66	20	67236	2190	5	10	2525	881.5	24.38	24.45	0.07
5A-[66B]	5	5	20425	826.5	2425	871.5	QPSK	1	12	66	15	66786	2145	66	5	66879	2154.3	24.52	24.49	-0.03
5A-[66B]	66	15	132597	1772.5	67061	2172.5	QPSK	1	0	66	5	66968	2163.2	5	10	2525	881.5	24.38	24.42	0.04
5A-[66C]	5	5	20425	826.5	2425	871.5	QPSK	1	12	66	20	66786	2145	66	20	66984	2164.8	24.52	24.56	0.04
5A-[66C]	66	15	132597	1772.5	67061	2172.5	QPSK	1	0	66	20	66890	2155.4	5	10	2525	881.5	24.38	24.44	0.06
12B-[66A]	12	5	23095	707.5	5095	737.5	QPSK	1	12	12	5	5047	732.7	66	20	66786	2145	24.69	24.73	0.04
12B-[66A]	66	15	132597	1772.5	67061	2172.5	QPSK	1	0	12	5	5095	737.5	12	5	5047	732.7	24.38	24.45	0.07
12A-[66A]-66A	12	5	23095	707.5	5095	737.5	QPSK	1	12	66	20	66786	2145	66	20	67236	2190	24.69	24.66	-0.03
12A-66A-[66A]	12	5	23095	707.5	5095	737.5	QPSK	1	12	66	20	66786	2145	66	20	67236	2190	24.69	24.70	0.01
12A-[66A]-[66A]	12	5	23095	707.5	5095	737.5	QPSK	1	12	66	20	66786	2145	66	20	67236	2190	24.69	24.74	0.05
12A-[66A]-66A	66	15	132597	1772.5	67061	2172.5	QPSK	1	0	66	20	67236	2190	12	10	5095	737.5	24.38	24.35	-0.03
12A-66A-[66A]	66	15	132597	1772.5	67061	2172.5	QPSK	1	0	66	20	67236	2190	12	10	5095	737.5	24.38	24.40	0.02
12A-[66A]-[66A]	66	15	132597	1772.5	67061	2172.5	QPSK	1	0	66	20	67236	2190	12	10	5095	737.5	24.38	24.39	0.01
12A-[66C]	12	5	23095	707.5	5095	737.5	QPSK	1	12	66	20	66786	2145	66	20	66984	2164.8	24.69	24.71	0.02
12A-[66C]	66	15	132597	1772.5	67061	2172.5	QPSK	1	0	66	20	66890	2155.4	12	10	5095	737.5	24.38	24.43	0.05
13A-[66A]-66A	13	10	23230	782	5230	751	QPSK	1	0	66	20	66786	2145	66	20	67236	2190	24.49	24.47	-0.02



Combination	PCC									SCC				SCC				Tx Power		Deviation
	Band	BW	PCC UL Channel	PCC UL Frequency	PCC DL Channel	PCC DL Frequency	Modulation	RB	offset	Band	BW	SCC DL Channel	SCC DL Frequency	Band	BW	SCC DL Channel	SCC DL Frequency	LTE Single Carrier Tx Power (dBm)	LTE Tx Power with DL CA Enabled(dBm)	
13A-66A-[66A]	13	10	23230	782	5230	751	QPSK	1	0	66	20	66786	2145	66	20	67236	2190	24.49	24.45	-0.04
13A-[66A]-[66A]	13	10	23230	782	5230	751	QPSK	1	0	66	20	66786	2145	66	20	67236	2190	24.49	24.52	0.03
13A-[66A]-66A	66	15	132597	1772.5	67061	2172.5	QPSK	1	0	66	20	67236	2190	13	10	5230	751	24.38	24.37	-0.01
13A-66A-[66A]	66	15	132597	1772.5	67061	2172.5	QPSK	1	0	66	20	67236	2190	13	10	5230	751	24.38	24.41	0.03
13A-[66A]-[66A]	66	15	132597	1772.5	67061	2172.5	QPSK	1	0	66	20	67236	2190	13	10	5230	751	24.38	24.46	0.08
13A-[66B]	13	10	23230	782	5230	751	QPSK	1	0	66	15	66786	2145	66	5	66879	2154.3	24.49	24.51	0.02
13A-[66B]	66	15	132597	1772.5	67061	2172.5	QPSK	1	0	66	5	66968	2163.2	13	10	5230	751	24.38	24.42	0.04
13A-[66C]	13	10	23230	782	5230	751	QPSK	1	0	66	20	66786	2145	66	20	66984	2164.8	24.49	24.50	0.01
13A-[66C]	66	15	132597	1772.5	67061	2172.5	QPSK	1	0	66	20	66890	2155.4	13	10	5230	751	24.38	24.40	0.02
14A-[66A]-66A	14	10	23330	793	5330	763	QPSK	1	0	66	20	66786	2145	66	20	67236	2190	24.49	24.45	-0.04
14A-66A-[66A]	14	10	23330	793	5330	763	QPSK	1	0	66	20	66786	2145	66	20	67236	2190	24.49	24.50	0.01
14A-[66A]-[66A]	14	10	23330	793	5330	763	QPSK	1	0	66	20	66786	2145	66	20	67236	2190	24.49	24.51	0.02
14A-[66A]-66A	66	15	132597	1772.5	67061	2172.5	QPSK	1	0	66	20	67236	2190	14	10	5330	763	24.38	24.33	-0.05
14A-66A-[66A]	66	15	132597	1772.5	67061	2172.5	QPSK	1	0	66	20	67236	2190	14	10	5330	763	24.38	24.35	-0.03
14A-[66A]-[66A]	66	15	132597	1772.5	67061	2172.5	QPSK	1	0	66	20	67236	2190	14	10	5330	763	24.38	24.41	0.03
[25A]-25A-26A	25	10	26640	1910	8640	1990	QPSK	1	0	25	20	8140	1940	26	5	8865	876.5	23.98	23.99	0.01
25A-[25A]-26A	25	10	26640	1910	8640	1990	QPSK	1	0	25	20	8140	1940	26	5	8865	876.5	23.98	23.95	-0.03
[25A]-[25A]-26A	25	10	26640	1910	8640	1990	QPSK	1	0	25	20	8140	1940	26	5	8865	876.5	23.98	24.00	0.02
[25A]-25A-26A	26	5	26715	816.5	8715	861.5	QPSK	1	12	25	20	8365	1962.5	25	20	8590	1985	24.53	24.52	-0.01
25A-[25A]-26A	26	5	26715	816.5	8715	861.5	QPSK	1	12	25	20	8365	1962.5	25	20	8590	1985	24.53	24.50	-0.03
[25A]-[25A]-26A	26	5	26715	816.5	8715	861.5	QPSK	1	12	25	20	8365	1962.5	25	20	8590	1985	24.53	24.56	0.03
[66A]-66C	66	15	132597	1772.5	67061	2172.5	QPSK	1	0	66	20	66734	2139.8	66	20	66536	2120	24.38	24.42	0.04
66A-[66C]	66	15	132597	1772.5	67061	2172.5	QPSK	1	0	66	20	66734	2139.8	66	20	66536	2120	24.38	24.38	0.00
[66A]-[66C]	66	15	132597	1772.5	67061	2172.5	QPSK	1	0	66	20	66734	2139.8	66	20	66536	2120	24.38	24.39	0.01
[66A]-66C	66	15	132597	1772.5	67061	2172.5	QPSK	1	0	66	20	66890	2155.4	66	20	67236	2190	24.38	24.47	0.09
66A-[66C]	66	15	132597	1772.5	67061	2172.5	QPSK	1	0	66	20	66890	2155.4	66	20	67236	2190	24.38	24.39	0.01
[66A]-[66C]	66	15	132597	1772.5	67061	2172.5	QPSK	1	0	66	20	66890	2155.4	66	20	67236	2190	24.38	24.44	0.06
[66A]-66A-71A	66	15	132597	1772.5	67061	2172.5	QPSK	1	0	66	20	67236	2190	71	20	68786	637	24.38	24.40	0.02
66A-[66A]-71A	66	15	132597	1772.5	67061	2172.5	QPSK	1	0	66	20	67236	2190	71	20	68786	637	24.38	24.37	-0.01
[66A]-[66A]-71A	66	15	132597	1772.5	67061	2172.5	QPSK	1	0	66	20	67236	2190	71	20	68786	637	24.38	24.42	0.04
[66A]-66A-71A	71	5	133147	665.5	68611	619.5	QPSK	1	24	66	20	66786	2145	66	20	67236	2190	25.02	25.00	-0.02
66A-[66A]-71A	71	5	133147	665.5	68611	619.5	QPSK	1	24	66	20	66786	2145	66	20	67236	2190	25.02	25.05	0.03
[66A]-[66A]-71A	71	5	133147	665.5	68611	619.5	QPSK	1	24	66	20	66786	2145	66	20	67236	2190	25.02	24.95	-0.07
[66C]-71A	66	15	132597	1772.5	67061	2172.5	QPSK	1	0	66	20	66890	2155.4	71	20	68786	637	24.38	24.45	0.07
[66C]-71A	71	5	133147	665.5	68611	619.5	QPSK	1	24	66	20	66786	2145	66	20	66984	2164.8	25.02	25.05	0.03