

GSM 850

Communication System: UID 10021 - DAC, GSM-FDD (TDMA, GMSK); Frequency: 824.2 MHz; Duty Cycle: 1:8.6896

Phantom section: RF Section

DASY5 Configuration:

- Probe: EF3DV3 - SN4064; ConvF(1, 1, 1) @ 824.2 MHz; Calibrated: 2020-11-23
- Sensor-Surface: (Fix Surface)
- Electronics: DAE4 Sn1447; Calibrated: 2021-03-23
- Phantom: HAC Test Arch with AMCC; Type: SD HAC P01 BB
- Measurement SW: DASY52, Version 52.10 (4);SEMCAD X Version 14.6.14 (7483)

GSM850 E-Field measurement/Voice_ch128/Hearing Aid Compatibility Test (101x101x1):

Interpolated grid: dx=0.5000 mm, dy=0.5000 mm

Device Reference Point: 0, 0, -6.3 mm

Reference Value = 40.87 V/m; Power Drift = 0.16 dB

Applied MIF = 3.63 dB

RF audio interference level = 33.71 dBV/m

Emission category: **M4**

MIF scaled E-field

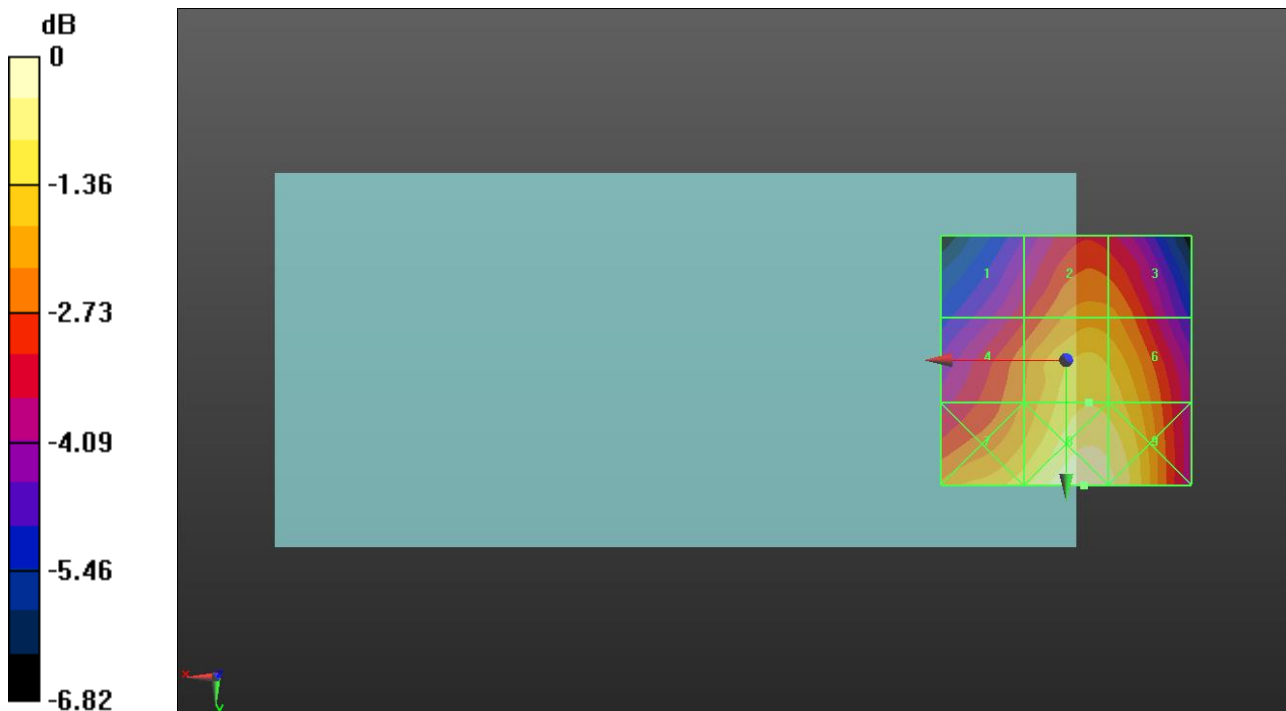
Grid 1 M4 31.36 dBV/m	Grid 2 M4 32.62 dBV/m	Grid 3 M4 32.56 dBV/m
Grid 4 M4 32.43 dBV/m	Grid 5 M4 33.71 dBV/m	Grid 6 M4 33.58 dBV/m
Grid 7 M4 33.62 dBV/m	Grid 8 M4 34.63 dBV/m	Grid 9 M4 34.32 dBV/m

Cursor:

Total = 34.63 dBV/m

E Category: M4

Location: -3.5, 25, 7.7 mm



0 dB = 53.89 V/m = 34.63 dBV/m

GSM 850

Communication System: UID 10021 - DAC, GSM-FDD (TDMA, GMSK); Frequency: 836.6 MHz; Duty Cycle: 1:8.6896

Phantom section: RF Section

DASY5 Configuration:

- Probe: EF3DV3 - SN4064; ConvF(1, 1, 1) @ 836.6 MHz; Calibrated: 2020-11-23
- Sensor-Surface: (Fix Surface)
- Electronics: DAE4 Sn1447; Calibrated: 2021-03-23
- Phantom: HAC Test Arch with AMCC; Type: SD HAC P01 BB
- Measurement SW: DASY52, Version 52.10 (4);SEMCAD X Version 14.6.14 (7483)

GSM850 E-Field measurement/Voice_ch190/Hearing Aid Compatibility Test (101x101x1):

Interpolated grid: dx=0.5000 mm, dy=0.5000 mm

Device Reference Point: 0, 0, -6.3 mm

Reference Value = 39.81 V/m; Power Drift = -0.05 dB

Applied MIF = 3.63 dB

RF audio interference level = 33.25 dBV/m

Emission category: **M4**

MIF scaled E-field

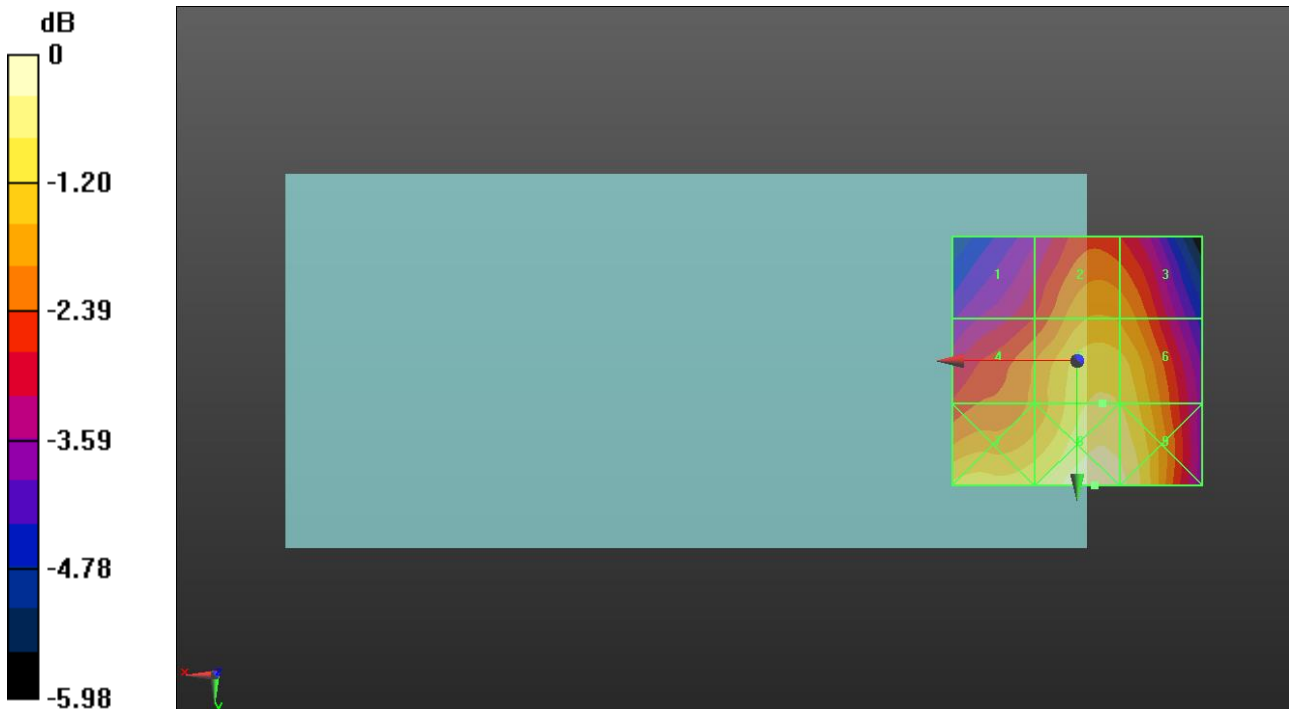
Grid 1 M4 31.25 dBV/m	Grid 2 M4 32.46 dBV/m	Grid 3 M4 32.36 dBV/m
Grid 4 M4 32.14 dBV/m	Grid 5 M4 33.25 dBV/m	Grid 6 M4 33.19 dBV/m
Grid 7 M4 33.22 dBV/m	Grid 8 M4 33.99 dBV/m	Grid 9 M4 33.77 dBV/m

Cursor:

Total = 33.99 dBV/m

E Category: M4

Location: -3.5, 25, 7.7 mm



0 dB = 50.08 V/m = 33.99 dBV/m

GSM 850

Communication System: UID 10021 - DAC, GSM-FDD (TDMA, GMSK); Frequency: 848.6 MHz; Duty Cycle: 1:8.6896
 Phantom section: RF Section

DASY5 Configuration:

- Probe: EF3DV3 - SN4064; ConvF(1, 1, 1) @ 848.6 MHz; Calibrated: 2020-11-23
- Sensor-Surface: (Fix Surface)
- Electronics: DAE4 Sn1447; Calibrated: 2021-03-23
- Phantom: HAC Test Arch with AMCC; Type: SD HAC P01 BB
- Measurement SW: DASY52, Version 52.10 (4);SEMCAD X Version 14.6.14 (7483)

GSM850 E-Field measurement/Voice_ch251/Hearing Aid Compatibility Test (101x101x1):

Interpolated grid: dx=0.5000 mm, dy=0.5000 mm

Device Reference Point: 0, 0, -6.3 mm

Reference Value = 34.85 V/m; Power Drift = -0.10 dB

Applied MIF = 3.63 dB

RF audio interference level = 31.91 dBV/m

Emission category: **M4**

MIF scaled E-field

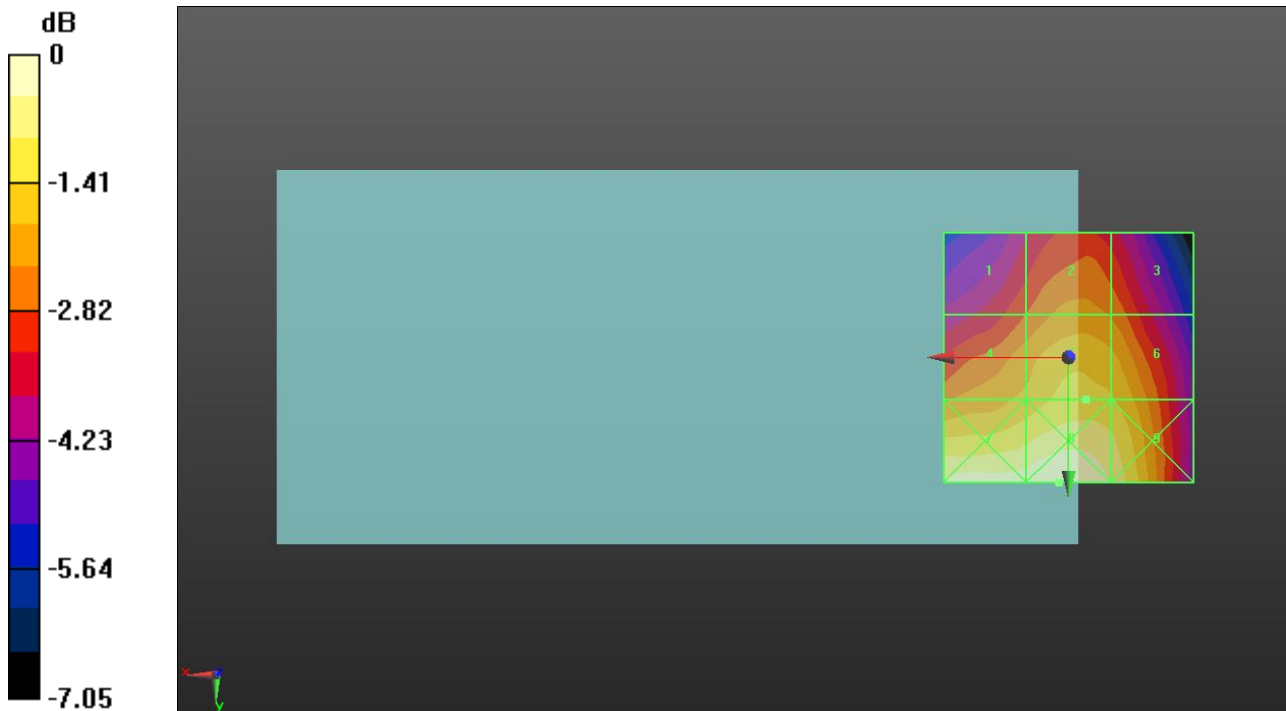
Grid 1 M4 30.3 dBV/m	Grid 2 M4 30.97 dBV/m	Grid 3 M4 30.7 dBV/m
Grid 4 M4 31.39 dBV/m	Grid 5 M4 31.91 dBV/m	Grid 6 M4 31.75 dBV/m
Grid 7 M4 32.98 dBV/m	Grid 8 M4 33.09 dBV/m	Grid 9 M4 32.61 dBV/m

Cursor:

Total = 33.09 dBV/m

E Category: M4

Location: 2, 25, 7.7 mm



0 dB = 45.15 V/m = 33.09 dBV/m

GSM 1900

Communication System: UID 10021 - DAC, GSM-FDD (TDMA, GMSK); Frequency: 1850.2 MHz; Duty Cycle: 1:8.6896

Phantom section: TCoil Section

DASY5 Configuration:

- Probe: EF3DV3 - SN4064; ConvF(1, 1, 1) @ 1850.2 MHz; Calibrated: 2020-11-23
- Sensor-Surface: (Fix Surface)
- Electronics: DAE4 Sn1447; Calibrated: 2021-03-23
- Phantom: HAC Test Arch with AMCC; Type: SD HAC P01 BB
- Measurement SW: DASY52, Version 52.10 (4);SEMCAD X Version 14.6.14 (7483)

GSM1900 E-Field measurement/Voice_ch512/Hearing Aid Compatibility Test (101x101x1):

Interpolated grid: dx=0.5000 mm, dy=0.5000 mm

Device Reference Point: 0, 0, -6.3 mm

Reference Value = 7.986 V/m; Power Drift = -0.19 dB

Applied MIF = 3.63 dB

RF audio interference level = 24.44 dBV/m

Emission category: **M4**

MIF scaled E-field

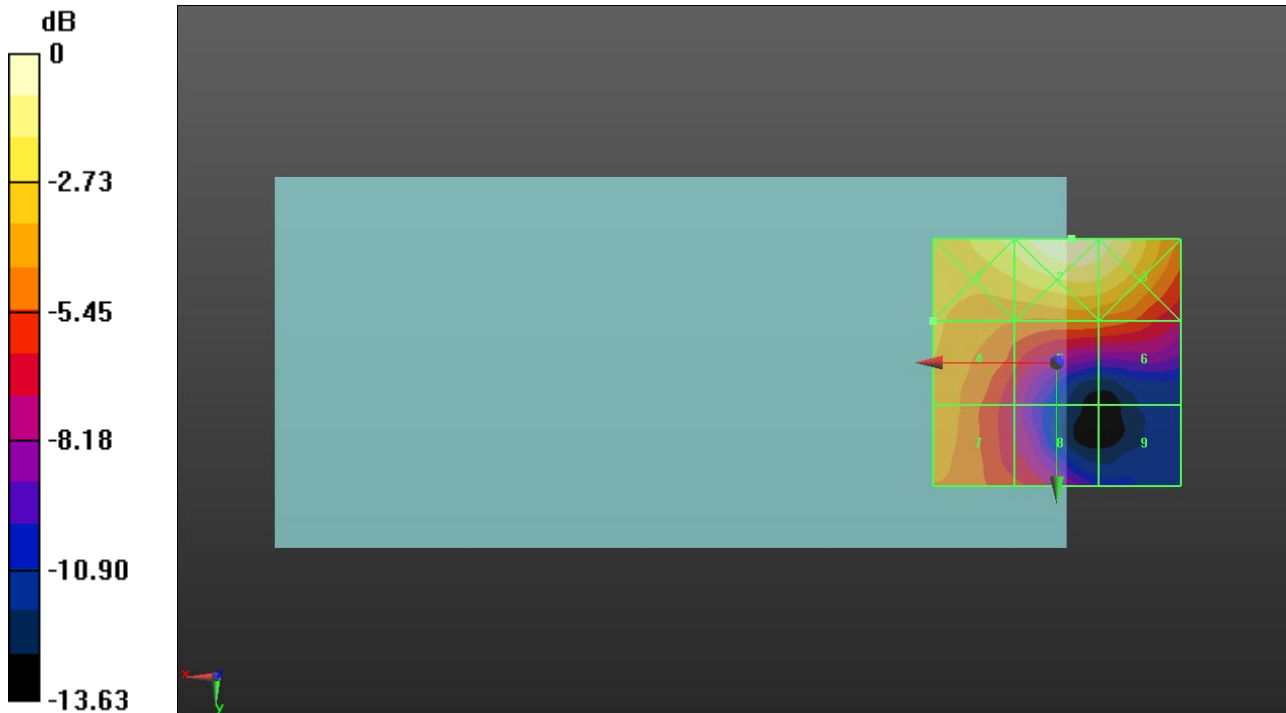
Grid 1 M4 26.47 dBV/m	Grid 2 M4 27.87 dBV/m	Grid 3 M4 27.42 dBV/m
Grid 4 M4 24.44 dBV/m	Grid 5 M4 23.39 dBV/m	Grid 6 M4 23.05 dBV/m
Grid 7 M4 24.08 dBV/m	Grid 8 M4 21.84 dBV/m	Grid 9 M4 17.71 dBV/m

Cursor:

Total = 27.87 dBV/m

E Category: M4

Location: -3, -25, 7.7 mm



0 dB = 24.74 V/m = 27.87 dBV/m

GSM 1900

Communication System: UID 10021 - DAC, GSM-FDD (TDMA, GMSK); Frequency: 1880 MHz; Duty Cycle: 1:8.6896

Phantom section: TCoil Section

DASY5 Configuration:

- Probe: EF3DV3 - SN4064; ConvF(1, 1, 1) @ 1880 MHz; Calibrated: 2020-11-23
- Sensor-Surface: (Fix Surface)
- Electronics: DAE4 Sn1447; Calibrated: 2021-03-23
- Phantom: HAC Test Arch with AMCC; Type: SD HAC P01 BB
- Measurement SW: DASY52, Version 52.10 (4);SEMCAD X Version 14.6.14 (7483)

GSM1900 E-Field measurement/Voice_ch661/Hearing Aid Compatibility Test (101x101x1):

Interpolated grid: dx=0.5000 mm, dy=0.5000 mm

Device Reference Point: 0, 0, -6.3 mm

Reference Value = 13.90 V/m; Power Drift = -0.01 dB

Applied MIF = 3.63 dB

RF audio interference level = 24.38 dBV/m

Emission category: **M4**

MIF scaled E-field

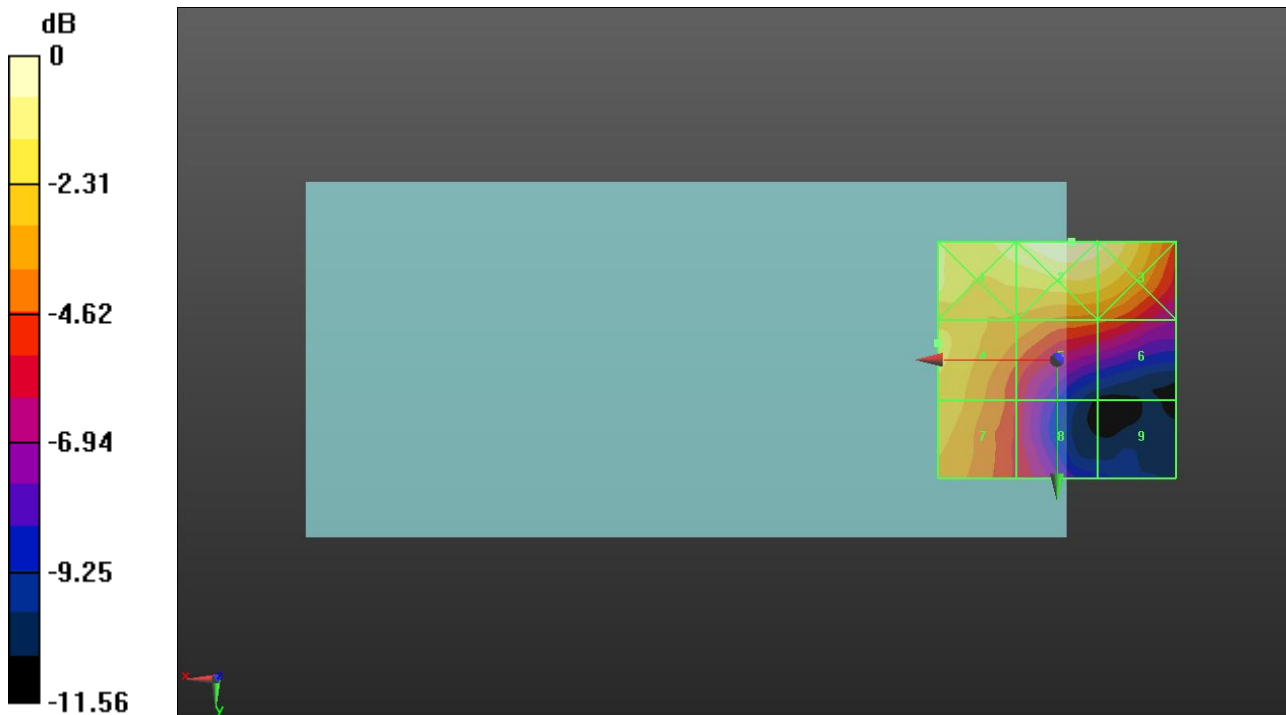
Grid 1 M4 25.6 dBV/m	Grid 2 M4 26.49 dBV/m	Grid 3 M4 26.06 dBV/m
Grid 4 M4 24.38 dBV/m	Grid 5 M4 23.26 dBV/m	Grid 6 M4 22.2 dBV/m
Grid 7 M4 24.01 dBV/m	Grid 8 M4 21.06 dBV/m	Grid 9 M4 17.74 dBV/m

Cursor:

Total = 26.49 dBV/m

E Category: M4

Location: -3, -25, 7.7 mm



0 dB = 21.12 V/m = 26.49 dBV/m

GSM 1900

Communication System: UID 10021 - DAC, GSM-FDD (TDMA, GMSK); Frequency: 1909.8 MHz; Duty Cycle: 1:8.6896

Phantom section: TCoil Section

DASY5 Configuration:

- Probe: EF3DV3 - SN4064; ConvF(1, 1, 1) @ 1909.8 MHz; Calibrated: 2020-11-23
- Sensor-Surface: (Fix Surface)
- Electronics: DAE4 Sn1447; Calibrated: 2021-03-23
- Phantom: HAC Test Arch with AMCC; Type: SD HAC P01 BB
- Measurement SW: DASY52, Version 52.10 (4);SEMCAD X Version 14.6.14 (7483)

GSM1900 E-Field measurement/Voice_ch810/Hearing Aid Compatibility Test (101x101x1): Interpolated grid: dx=0.5000 mm, dy=0.5000 mm

Device Reference Point: 0, 0, -6.3 mm

Reference Value = 10.87 V/m; Power Drift = 0.08 dB

Applied MIF = 3.63 dB

RF audio interference level = 24.46 dBV/m

Emission category: **M4**

MIF scaled E-field

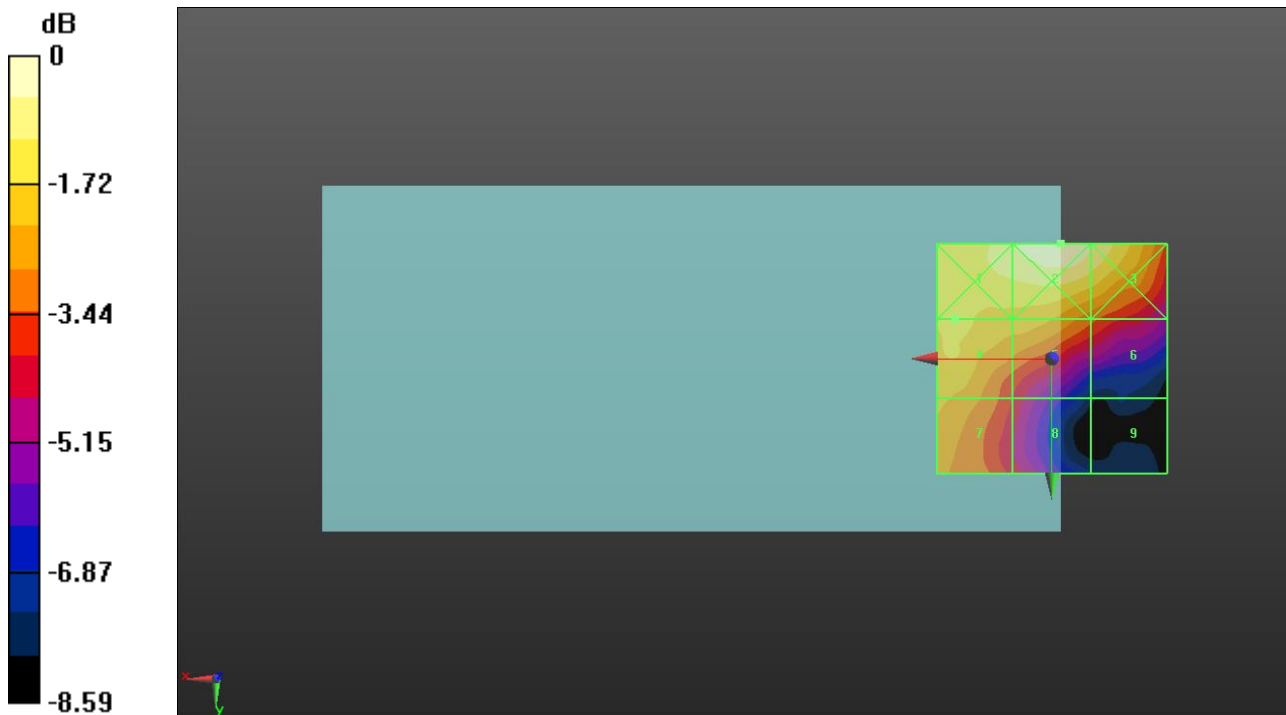
Grid 1 M4 25.35 dBV/m	Grid 2 M4 26.02 dBV/m	Grid 3 M4 25.55 dBV/m
Grid 4 M4 24.46 dBV/m	Grid 5 M4 24.08 dBV/m	Grid 6 M4 22.78 dBV/m
Grid 7 M4 23.91 dBV/m	Grid 8 M4 22.03 dBV/m	Grid 9 M4 18.73 dBV/m

Cursor:

Total = 26.02 dBV/m

E Category: M4

Location: -2, -25, 7.7 mm



0 dB = 20.00 V/m = 26.02 dBV/m

LTE Band 41

Communication System: UID 10173 - CAG, LTE-TDD (SC-FDMA, 1 RB, 20 MHz, 16-QAM); Frequency: 2506 MHz; Duty Cycle: 1:8.87156

Phantom section: RF Section

DASY5 Configuration:

- Probe: EF3DV3 - SN4064; ConvF(1, 1, 1) @ 2506 MHz; Calibrated: 2020-11-23
- Sensor-Surface: (Fix Surface)
- Electronics: DAE4 Sn1447; Calibrated: 2021-03-23
- Phantom: HAC Test Arch with AMCC; Type: SD HAC P01 BB
- Measurement SW: DASY52, Version 52.10 (4);SEMCAD X Version 14.6.14 (7483)

LTE Band 41 E-Field measurement/Voice_ch 39750 RB 1/0/Hearing Aid Compatibility

Test (101x101x1): Interpolated grid: dx=0.5000 mm, dy=0.5000 mm

Device Reference Point: 0, 0, -6.3 mm

Reference Value = 13.40 V/m; Power Drift = -0.00 dB

Applied MIF = -1.44 dB

RF audio interference level = 19.26 dBV/m

Emission category: M4

MIF scaled E-field

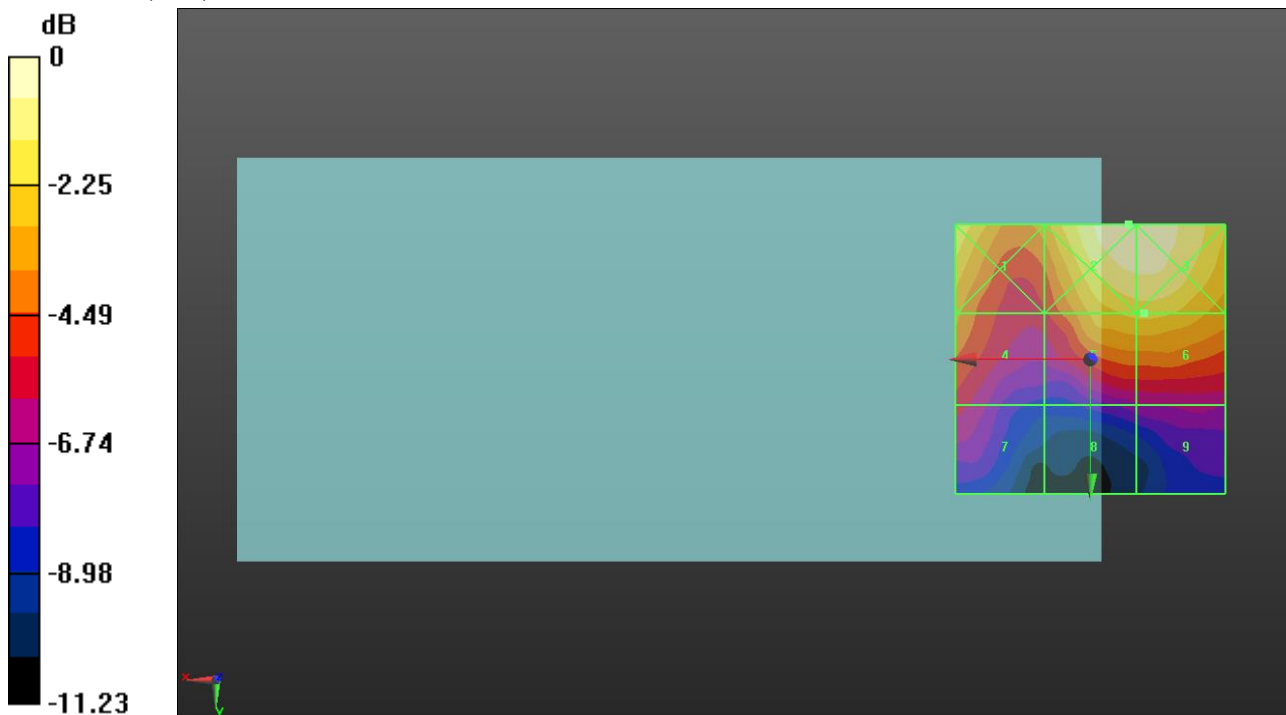
Grid 1 M4 19.9 dBV/m	Grid 2 M4 21.24 dBV/m	Grid 3 M4 21.22 dBV/m
Grid 4 M4 17.81 dBV/m	Grid 5 M4 19.21 dBV/m	Grid 6 M4 19.26 dBV/m
Grid 7 M4 15.64 dBV/m	Grid 8 M4 14.34 dBV/m	Grid 9 M4 14.83 dBV/m

Cursor:

Total = 21.24 dBV/m

E Category: M4

Location: -7, -25, 7.7 mm



0 dB = 11.54 V/m = 21.24 dBV/m

LTE Band 41

Communication System: UID 10173 - CAG, LTE-TDD (SC-FDMA, 1 RB, 20 MHz, 16-QAM); Frequency: 2549.5 MHz; Duty Cycle: 1:8.87156

Phantom section: RF Section

DASY5 Configuration:

- Probe: EF3DV3 - SN4064; ConvF(1, 1, 1) @ 2549.5 MHz; Calibrated: 2020-11-23

- Sensor-Surface: (Fix Surface)

- Electronics: DAE4 Sn1447; Calibrated: 2021-03-23

- Phantom: HAC Test Arch with AMCC; Type: SD HAC P01 BB

- Measurement SW: DASY52, Version 52.10 (4);SEMCAD X Version 14.6.14 (7483)

LTE Band 41 E-Field measurement/Voice_ch 40185 RB 1/0/Hearing Aid Compatibility

Test (101x101x1): Interpolated grid: dx=0.5000 mm, dy=0.5000 mm

Device Reference Point: 0, 0, -6.3 mm

Reference Value = 11.13 V/m; Power Drift = 0.05 dB

Applied MIF = -1.44 dB

RF audio interference level = 20.07 dBV/m

Emission category: M4

MIF scaled E-field

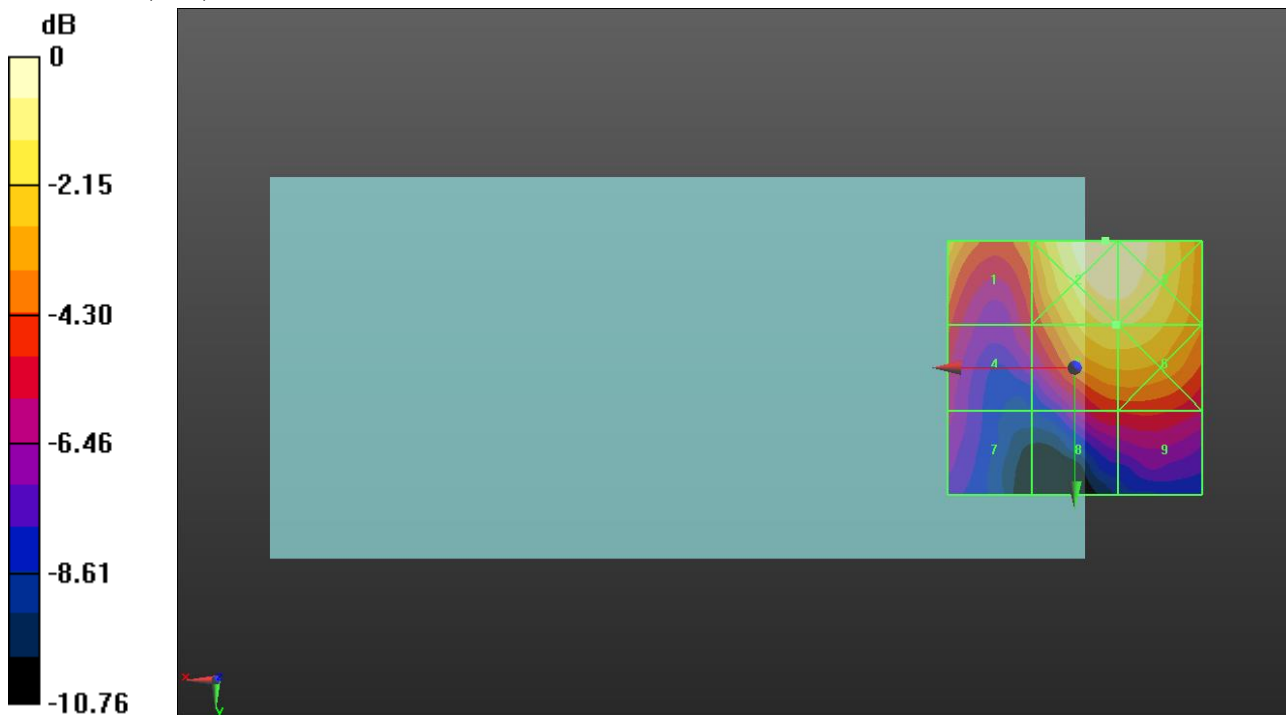
Grid 1 M4 19.36 dBV/m	Grid 2 M4 21.43 dBV/m	Grid 3 M4 21.35 dBV/m
Grid 4 M4 16.76 dBV/m	Grid 5 M4 20.07 dBV/m	Grid 6 M4 20.06 dBV/m
Grid 7 M4 15.37 dBV/m	Grid 8 M4 16.53 dBV/m	Grid 9 M4 16.64 dBV/m

Cursor:

Total = 21.43 dBV/m

E Category: M4

Location: -6, -25, 7.7 mm



0 dB = 11.79 V/m = 21.43 dBV/m

LTE Band 41

Communication System: UID 10173 - CAG, LTE-TDD (SC-FDMA, 1 RB, 20 MHz, 16-QAM); Frequency: 2593 MHz; Duty Cycle: 1:8.87156

Phantom section: RF Section

DASY5 Configuration:

- Probe: EF3DV3 - SN4064; ConvF(1, 1, 1) @ 2593 MHz; Calibrated: 2020-11-23
- Sensor-Surface: (Fix Surface)
- Electronics: DAE4 Sn1447; Calibrated: 2021-03-23
- Phantom: HAC Test Arch with AMCC; Type: SD HAC P01 BB
- Measurement SW: DASY52, Version 52.10 (4);SEMCAD X Version 14.6.14 (7483)

LTE Band 41 E-Field measurement/Voice_ch 40620 RB 1/0/Hearing Aid Compatibility

Test (101x101x1): Interpolated grid: dx=0.5000 mm, dy=0.5000 mm

Device Reference Point: 0, 0, -6.3 mm

Reference Value = 11.01 V/m; Power Drift = -0.06 dB

Applied MIF = -1.44 dB

RF audio interference level = 19.89 dBV/m

Emission category: M4

MIF scaled E-field

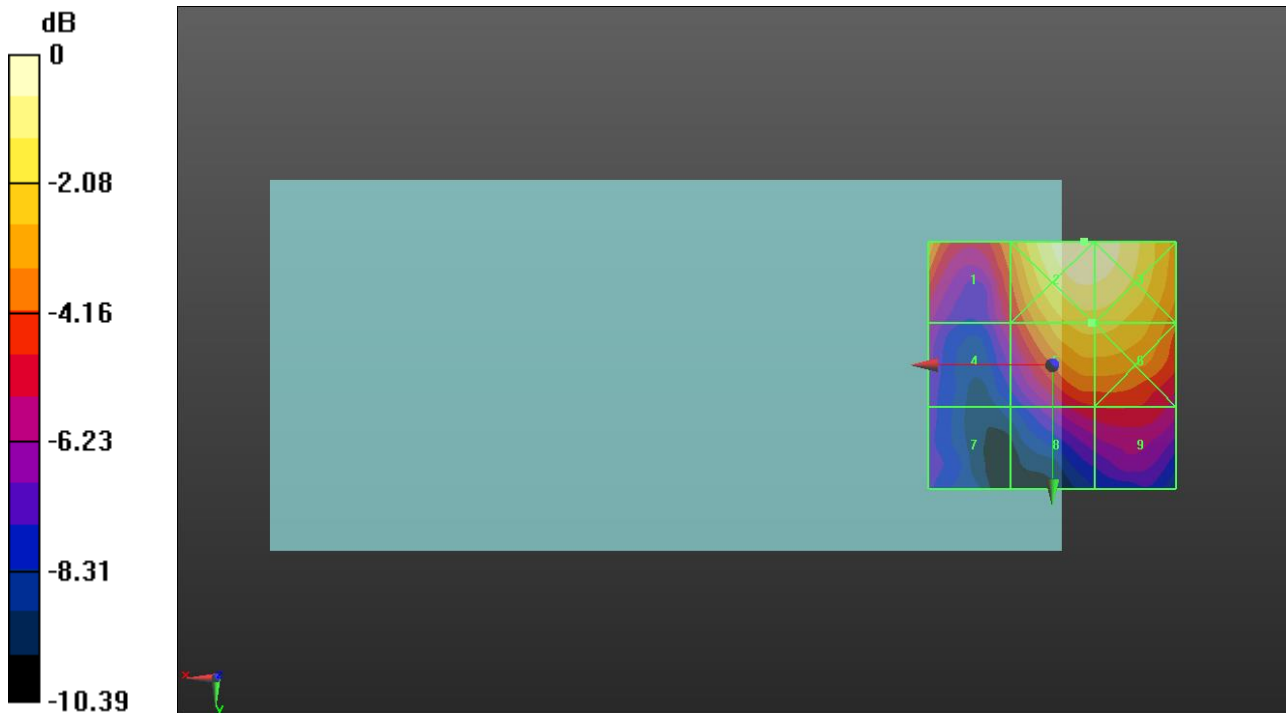
Grid 1 M4 18.99 dBV/m	Grid 2 M4 21.64 dBV/m	Grid 3 M4 21.58 dBV/m
Grid 4 M4 16.33 dBV/m	Grid 5 M4 19.89 dBV/m	Grid 6 M4 19.89 dBV/m
Grid 7 M4 14.43 dBV/m	Grid 8 M4 16.75 dBV/m	Grid 9 M4 16.88 dBV/m

Cursor:

Total = 21.64 dBV/m

E Category: M4

Location: -6.5, -25, 7.7 mm



0 dB = 12.08 V/m = 21.64 dBV/m

LTE Band 41

Communication System: UID 10173 - CAG, LTE-TDD (SC-FDMA, 1 RB, 20 MHz, 16-QAM); Frequency: 2636.5 MHz; Duty Cycle: 1:8.87156

Phantom section: RF Section

DASY5 Configuration:

- Probe: EF3DV3 - SN4064; ConvF(1, 1, 1) @ 2636.5 MHz; Calibrated: 2020-11-23
- Sensor-Surface: (Fix Surface)
- Electronics: DAE4 Sn1447; Calibrated: 2021-03-23
- Phantom: HAC Test Arch with AMCC; Type: SD HAC P01 BB
- Measurement SW: DASY52, Version 52.10 (4);SEMCAD X Version 14.6.14 (7483)

LTE Band 41 E-Field measurement/Voice_ch 41055 RB 1/0/Hearing Aid Compatibility

Test (101x101x1): Interpolated grid: dx=0.5000 mm, dy=0.5000 mm

Device Reference Point: 0, 0, -6.3 mm

Reference Value = 10.65 V/m; Power Drift = -0.10 dB

Applied MIF = -1.44 dB

RF audio interference level = 17.90 dBV/m

Emission category: M4

MIF scaled E-field

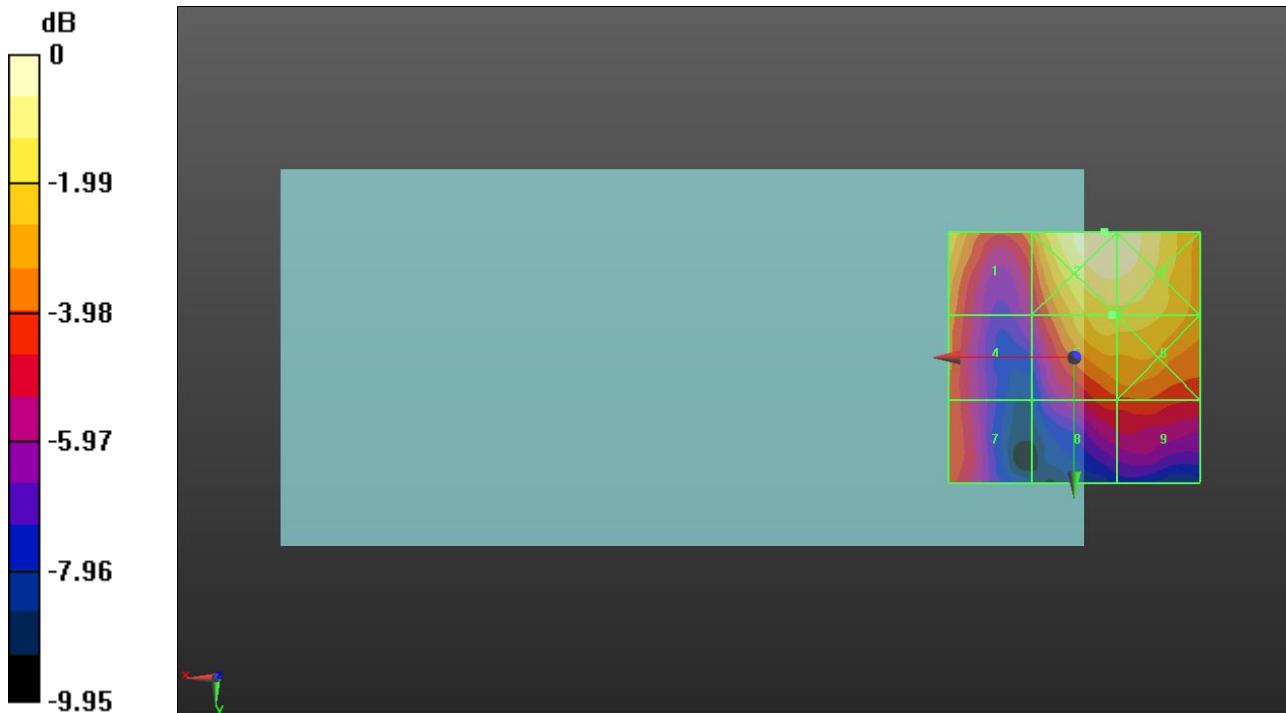
Grid 1 M4 17.67 dBV/m	Grid 2 M4 19.44 dBV/m	Grid 3 M4 19.34 dBV/m
Grid 4 M4 15.99 dBV/m	Grid 5 M4 17.9 dBV/m	Grid 6 M4 17.89 dBV/m
Grid 7 M4 15.4 dBV/m	Grid 8 M4 15.23 dBV/m	Grid 9 M4 15.45 dBV/m

Cursor:

Total = 19.44 dBV/m

E Category: M4

Location: -6, -25, 7.7 mm



0 dB = 9.373 V/m = 19.44 dBV/m

LTE Band 41

Communication System: UID 10173 - CAG, LTE-TDD (SC-FDMA, 1 RB, 20 MHz, 16-QAM); Frequency: 2680 MHz; Duty Cycle: 1:8.87156

Phantom section: RF Section

DASY5 Configuration:

- Probe: EF3DV3 - SN4064; ConvF(1, 1, 1) @ 2680 MHz; Calibrated: 2020-11-23
- Sensor-Surface: (Fix Surface)
- Electronics: DAE4 Sn1447; Calibrated: 2021-03-23
- Phantom: HAC Test Arch with AMCC; Type: SD HAC P01 BB
- Measurement SW: DASY52, Version 52.10 (4);SEMCAD X Version 14.6.14 (7483)

LTE Band 41 E-Field measurement/Voice_ch 41490 RB 1/0/Hearing Aid Compatibility

Test (101x101x1): Interpolated grid: dx=0.5000 mm, dy=0.5000 mm

Device Reference Point: 0, 0, -6.3 mm

Reference Value = 9.166 V/m; Power Drift = -0.16 dB

Applied MIF = -1.44 dB

RF audio interference level = 17.49 dBV/m

Emission category: M4

MIF scaled E-field

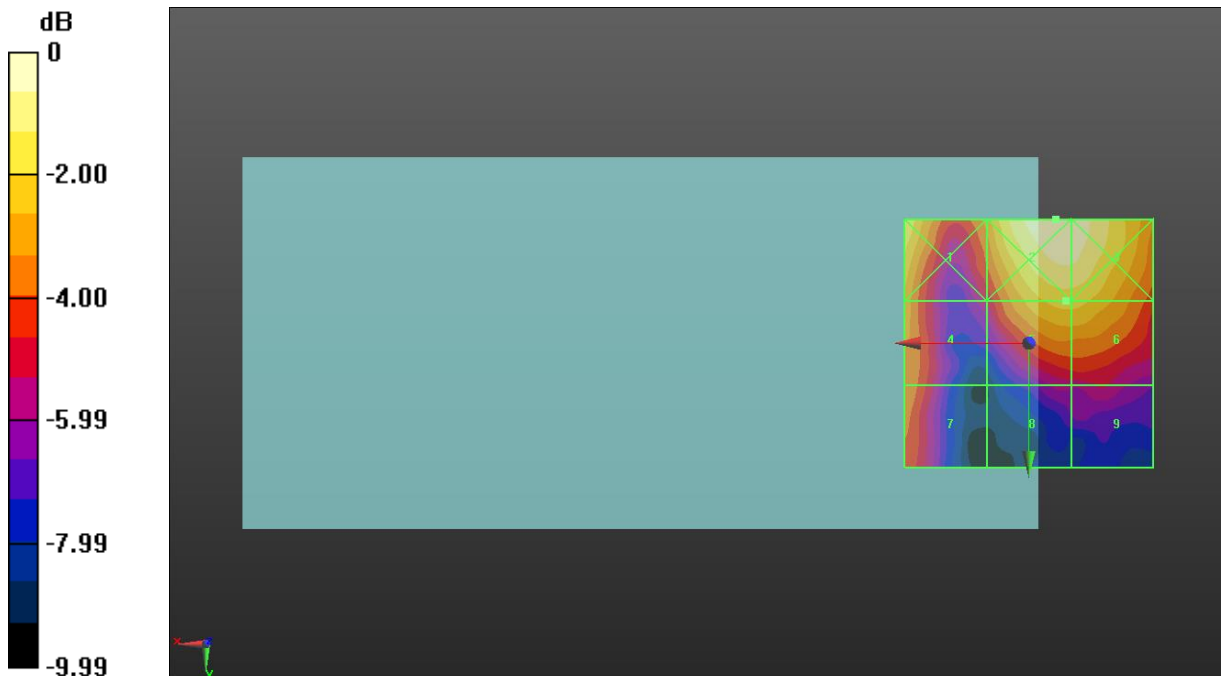
Grid 1 M4 18.2 dBV/m	Grid 2 M4 19.21 dBV/m	Grid 3 M4 19.05 dBV/m
Grid 4 M4 16.44 dBV/m	Grid 5 M4 17.49 dBV/m	Grid 6 M4 17.48 dBV/m
Grid 7 M4 15.77 dBV/m	Grid 8 M4 13.52 dBV/m	Grid 9 M4 13.97 dBV/m

Cursor:

Total = 19.21 dBV/m

E Category: M4

Location: -5.5, -25, 7.7 mm



0 dB = 9.132 V/m = 19.21 dBV/m