

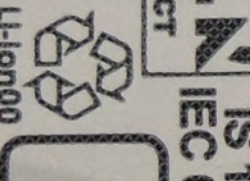
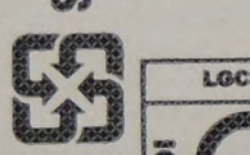
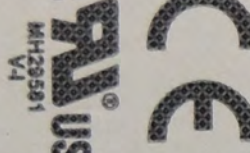
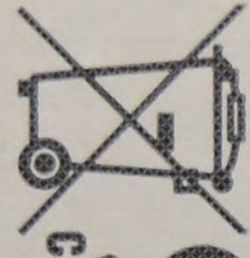
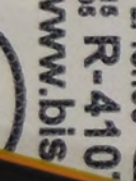
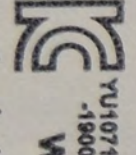
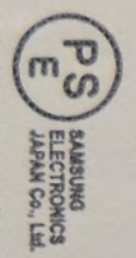
2019.12.12
GG1MC12AS/..B

SAMSUNG

CELL MADE IN CHINA, ASSEMBLED IN VIETNAM
BATTERIE FABRIQUE EN CHINE, ASSEMBLÉ AU VIETNAM
Manufactured by ITM SEMICONDUCTOR VIETNAM CO., LTD
越南製造 / 越南製造 製造商: 株式會社LG化學

Secondary Li-ion Battery / 锂离子電池組 / 二次鋰電池組
Model / 型号 / 型號: EB-BA907ABY/L
Nominal Voltage / 标称电压 / 標稱電壓 / 電壓: 3.85 V_{nom}
Rated Capacity / 额定容量 / 額定電容量: 4370 mAh, 16.82 Wh
Typical Capacity: 4500 mAh, 17.33 Wh, Charge Voltage / 充電限制电压: 4.40 V
COC standard / 执行标准: GB 31241-2014 NS 21944: 1999-11C96/6

Warning: Do not disassemble, crush, puncture, heat, burn or reuse. Authorized Service Provider Only.
警告: 禁止拆卸、穿刺、燃燒或重疊使用。



C0314302710228

P99NH001
P181935
450 R04

D123DR
012116

FT25DM
DZ1QC

VV 1945-25
AMB67UM01
REV 3
SM-G770F

02510
1234567890

